

**MILWAUKEE TELEVISION, LLC**  
**4041 N. 35<sup>TH</sup> Street**  
**Milwaukee, WI 53216**

**File Number 111482**

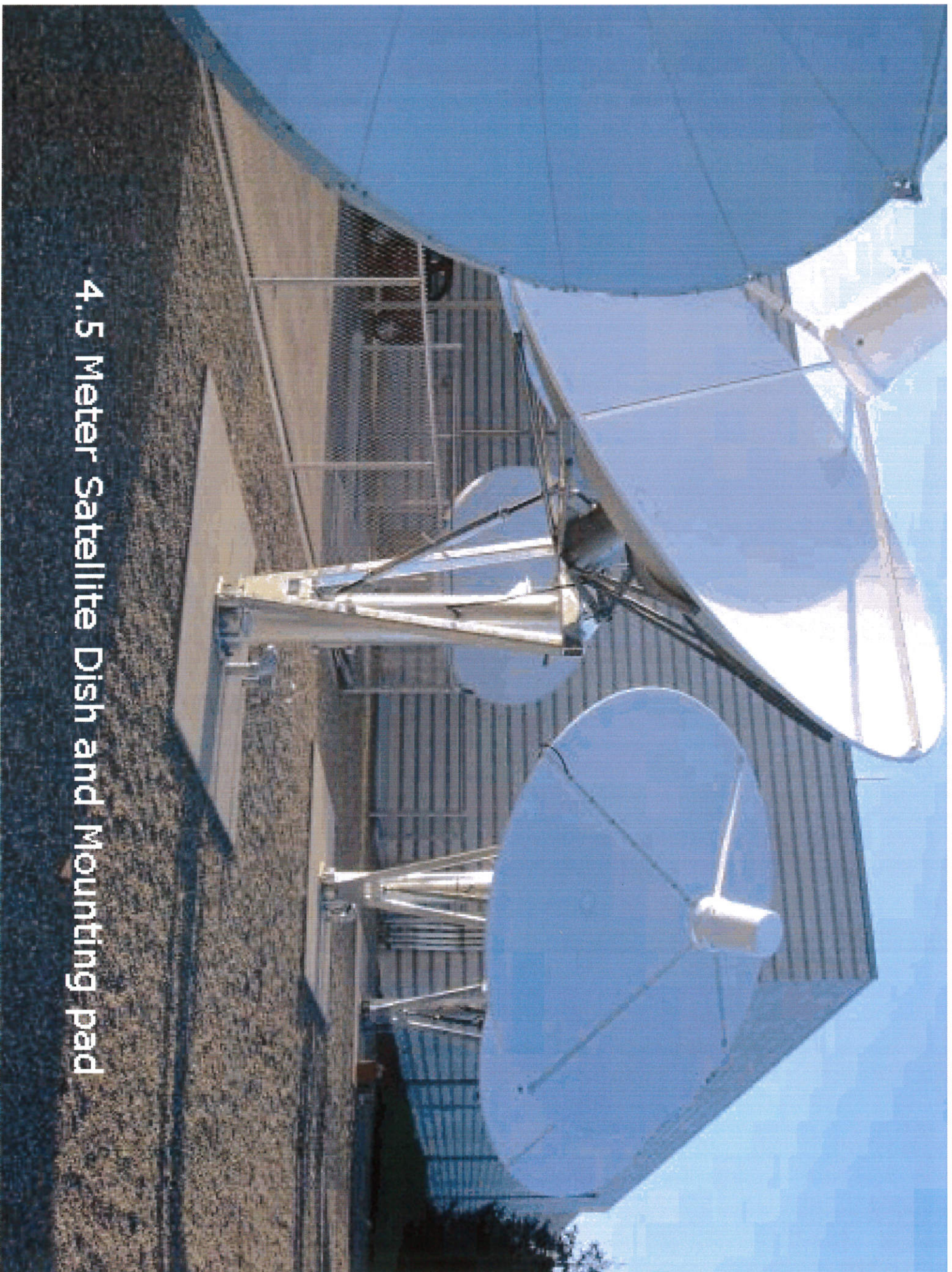
**Zoning Amendment to Stage 14 at Park Place**  
**11520 W. Calumet Road**

**Equipment Illustrations**

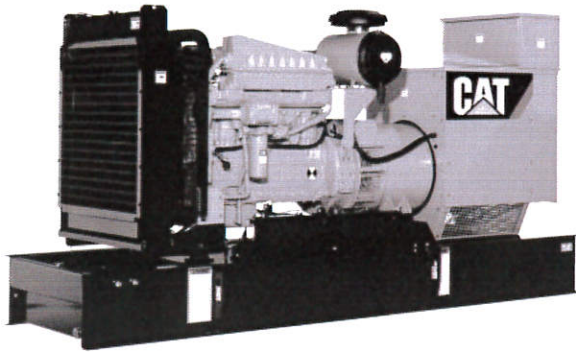
**Sheet 1**  
**Satellite Dish Company Will Purchase**

**Sheet 2**  
**Typical Generator Illustration**  
**Specific Make/Model To Be Determined**





4.5 Meter Satellite Dish and Mounting pad



**STANDBY 230 kW  
PRIME 210 kW**

**60 Hz**

Caterpillar is leading the power generation marketplace with Power Solutions engineered to deliver unmatched flexibility, expandability, reliability, and cost-effectiveness.

## FEATURES

### UL 2200

- UL 2200 Listed configuration available

### FULL RANGE OF ATTACHMENTS

- Wide range of bolt-on system expansion attachments, factory designed and tested

### ENCLOSURES (Optional)

- Weather protective and sound attenuated

### SINGLE-SOURCE SUPPLIER

- Complete systems designed and built at Caterpillar ISO 9001 certified facilities
- **Certified Prototype Tested** with torsional analysis

### WORLDWIDE PRODUCT SUPPORT

- Worldwide parts availability through the Caterpillar dealer network
- With over 1,200 dealer outlets operating in 166 countries, you're never far from the Caterpillar part you need.
- 99.5% of parts orders filled within 48 hours. The best product support record in the industry.
- Caterpillar dealer service technicians are trained to service every aspect of your electric power generation system.
- Preventive maintenance agreements
- The Cat Scheduled Oil Sampling (S•O•S<sup>SM</sup>) program cost effectively detects internal engine component condition, even the presence of unwanted fluids and combustion by-products



### CAT® 3306B DIESEL ENGINE

- Reliable, rugged, durable design
- Field-proven in thousands of applications worldwide
- Four-stroke-cycle diesel engine combines consistent performance and excellent fuel economy with minimum weight



### CAT SR4B GENERATOR

- Designed to match performance and output characteristics of Caterpillar diesel engines
- Optimum winding pitch for minimum total harmonic distortion and maximum efficiency
- UL 1446 Recognized Class F available for UL 2200 packaged generator set



### CAT CONTROL PANELS

- Four levels of controls, designed to meet individual customer needs:
  - Electromechanical panel provides analog monitoring and metering with basic protection
  - EMCP II provides digital monitoring, metering, and protection (UL 508A Listed)
  - EMCP II+ provides EMCP II features along with full-featured power metering and protective relaying (UL 508A Listed)
  - Switchgear conversion provides easy interface for remote switchgear





**STANDBY**  
**PRIME**  
**60 Hz**

**230 ekW**  
**210 ekW**



**TECHNICAL DATA**

Generator Set — 1800 rpm/60 Hz/480 Volt		Standby		Prime	
<b>Package Performance</b>					
Power rating	ekW	230		210	
Power rating @ 0.8 PF	kVA	288		263	
<b>Fuel Consumption</b>					
100% load with fan	L/hr Gal/hr	67.8	17.9	61.3	16.2
75% load with fan	L/hr Gal/hr	50.7	13.4	45.8	12.1
50% load with fan	L/hr Gal/hr	35.2	9.3	32.6	8.6
<b>Cooling System</b>					
Ambient air temperature	Deg C Deg F	52	125	49	121
Air flow restriction (system)	kPa in water	62	0.25	62	0.25
Air flow (maximum @ rated speed for standard radiator arrangement)	m <sup>3</sup> /min cfm	278	9840	278	9840
Engine coolant capacity with radiator	L Gal	39.7	10.5	39.7	10.5
Engine coolant capacity without radiator	L Gal	15.9	4.2	15.9	4.2
<b>Exhaust System</b>					
Combustion air inlet flow rate	m <sup>3</sup> /min cfm	19.7	696	18.3	646
Exhaust stack gas temperature	Deg C Deg F	556	1032	537	998
Exhaust gas flow rate	m <sup>3</sup> /min cfm	58.2	2055	52.6	1858
Exhaust flange size (internal diameter)	mm in	152	6.0	152	6.0
Exhaust system backpressure (maximum allowable)	kPa in water	6723	27	6723	27
<b>Heat Rejection</b>					
Heat rejection to coolant (total)	kW Btu/min	153	8701	139	7905
Heat rejection to exhaust (total)	kW Btu/min	263	14,957	235	13,364
Heat rejection to atmosphere from engine	kW Btu/min	49	2787	43	2445
Heat rejection to atmosphere from generator	kW Btu/min	19	1102	17	972
<b>Alternator</b>					
Motor starting capability @ 30% voltage dip	kVA	571		571	
Frame		4455		4455	
Temperature rise	Deg C	98		80	
<b>Lube System</b>					
Lube oil refill volume with filter change for standard sump	L Qts	29	31	29	31

\*UL 2200 Listed packages may have oversized generators with a different temperature rise and motor starting characteristics.

**RATING DEFINITIONS AND CONDITIONS**

**Meets or Exceeds International Specifications:**

- ABGSM TM3, AS1359, AS2789, BS4999, BS5000, BS5514, DIN6271, DIN6280, EGSA101P, IEC34/1, ISO3046/1, ISO8528, JEM1359, NEMA MG1-22, VDE0530, 89/392/EEC, 89/336/EEC

**Standby** — Output available with varying load for the duration of the interruption of the normal source power. Standby power in accordance with ISO8528. Fuel stop power in accordance with ISO3046/1, AS2789, DIN6271, and BS5514.

**Prime** — Output available with varying load for an unlimited time. Prime power in accordance with ISO8528. 10% overload power in accordance with ISO3046/1, AS2789, DIN6271, and BS5514 available on request.

**Ratings** are based on SAE J1349 standard conditions.

These ratings also apply at ISO3046/1, DIN6271, and BS5514 standard conditions.

**Fuel rates** are based on fuel oil of 35° API [@ 16° C (60° F)] gravity having an LHV of 42 780 kJ/kg (18,390 Btu/lb) when used at 29° C (85° F) and weighing 838.9 g/liter (7.001 lbs/U.S. gal.).

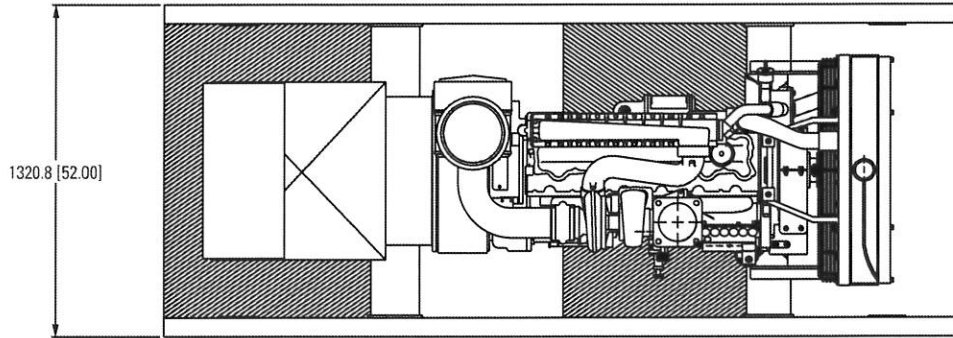
Additional ratings may be available for specific customer requirements. Consult your Caterpillar representative for details.

STANDBY  
PRIME  
60 Hz

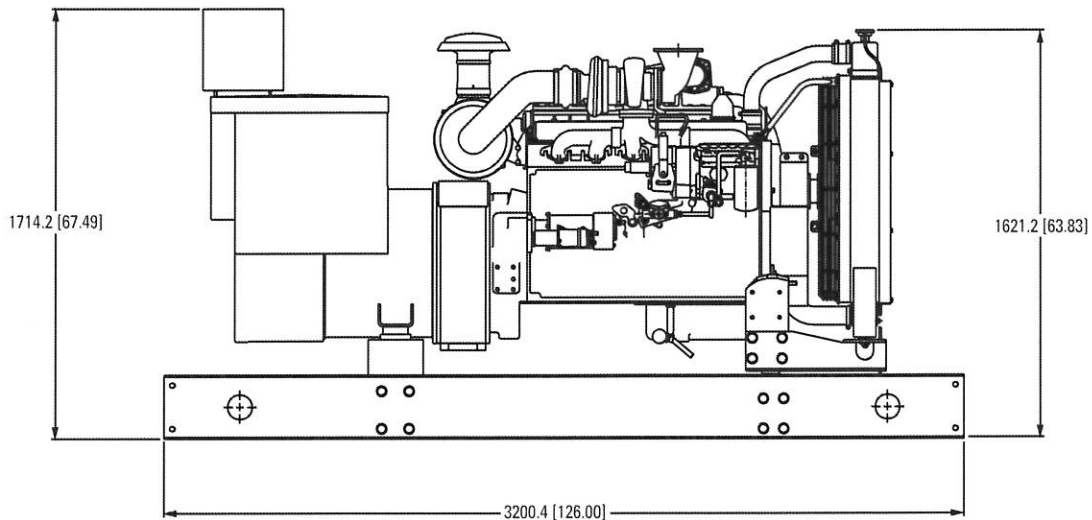
230 kW  
210 kW

**CATERPILLAR®**

**STANDBY/PRIME POWER GENERATOR SET PACKAGE — TOP VIEW**



**STANDBY/PRIME POWER GENERATOR SET PACKAGE — SIDE VIEW**



Package Dimensions		
<b>Length</b>	3200.4 mm	126.00 in
<b>Width</b>	1320.8 mm	52.00 in
<b>Radiator Height</b>	1621.2 mm	63.83 in
<b>Control Panel Height</b>	1714.2 mm	67.49 in
<b>Shipping Weight</b>	2277 kg	5,020 lb

Note: General configuration not to be used for installation. See general dimension drawings for detail.



TMI Reference No.:

U.S. sourced

LEHX0702-01 (05-07)  
Replaces LEHX6369, LEHX6370,  
LEHX0702

Information contained in this publication may be considered confidential.

Discretion is recommended when distributing.  
Materials and specifications are subject to change without notice.  
CAT, CATERPILLAR, their respective logos, "Caterpillar Yellow"  
and the POWER EDGE trade dress, as well as corporate  
and product identity used herein, are trademarks of  
Caterpillar and may not be used without permission.

www.cat-electricpower.com

© 2007 Caterpillar  
All Rights Reserved.  
Printed in U.S.A.