



LIVING WITH HISTORY

Certificate of Appropriateness

Milwaukee Historic Preservation Commission/200 E. Wells Street/Milwaukee, WI 53202/phone 414-286-5712/fax 414-286-3004

Property 2473 S. KINNICKINNIC AV. Avalon Theater, an individually-designated building
Description of work Install two poster cases, each 45" x 66," on the exterior of the theater. Cases will be internally illuminated and will duplicate the appearance of 1920's poster cases using modern materials and lighting methods.
Date issued 11/11/2014 PTS ID 86338 COA, poster cases on exterior

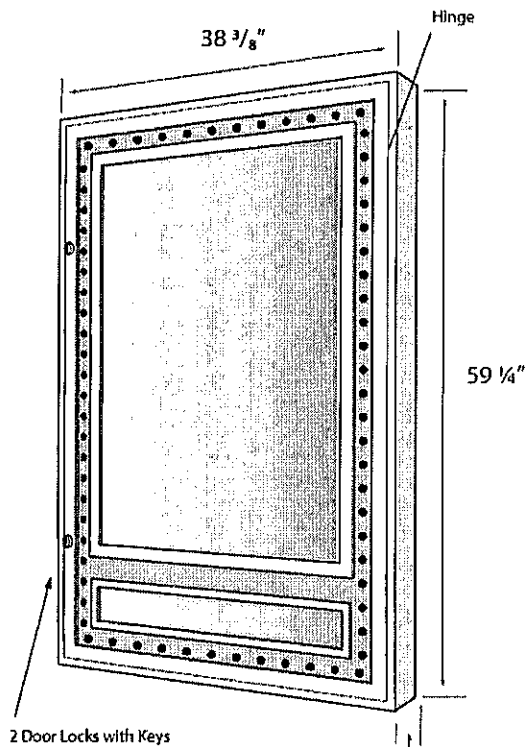
In accordance with the provisions of Section 320-21 (11) and (12) of the Milwaukee Code of Ordinances, the Milwaukee Historic Preservation Commission has issued a certificate of appropriateness for the work listed above. The work was found to be consistent with preservation guidelines. The following conditions apply to this certificate of appropriateness:

All work will be done according to the specifications, photos and drawings contained in this COA.

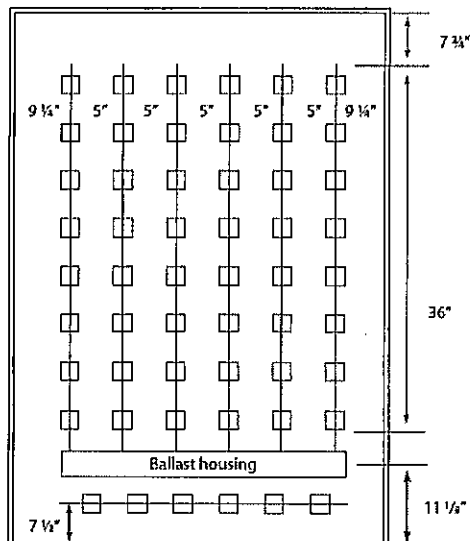
All work must be done in a craftsman-like manner, and must be completed within one year of the date this certificate was issued. Staff must approve any changes or additions to this certificate before work begins. Work that is not completed in accordance with this certificate may be subject to correction orders or citations. If you require technical assistance, please contact Paul Jakubovich of the Historic Preservation staff as follows: Phone: (414) 286-5712 Fax: (414) 286-3004 E-mail: pjakub@milwaukee.gov. If permits are required, you are responsible for obtaining them from the Milwaukee Development Center. If you have questions about permit requirements, please consult the Development Center's web site, www.milwaukee.gov/build, or call (414) 286-8210.

Paul Jakubovich
City of Milwaukee Historic Preservation

Copies to: Development Center, Ald. Tony Zielinski, Contractor Ascend Design, Inspector Chris Buzzell (286-2519), Inspector Heidi Weed



LED Lighting Panel



Product Info

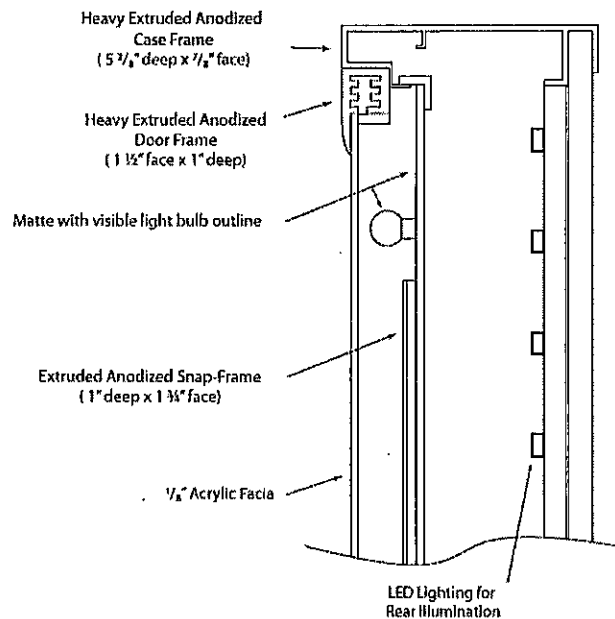
- Front loading snap open / closed frame
- Heavy extruded anodized aluminum case frame
- Recessed door
- Full - Length piano hinge
- Aluminum back
- Indoor or outdoor use
- Fluorescent lighting for rear illumination
- 2 Cylinder locks with keys

Case Finishes

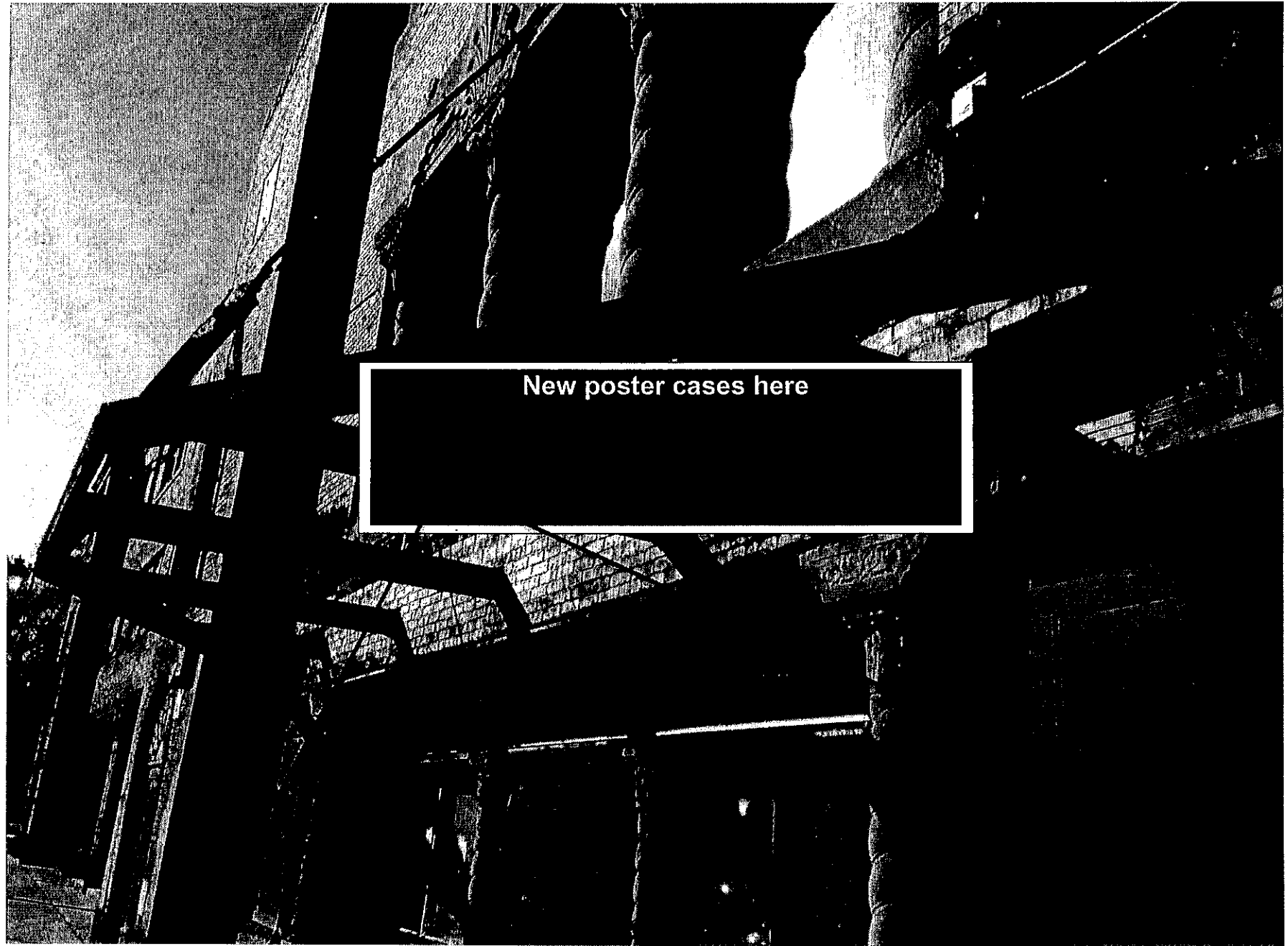
- Satin silver, satin gold, polished silver, polished gold or black

Electrical Specs

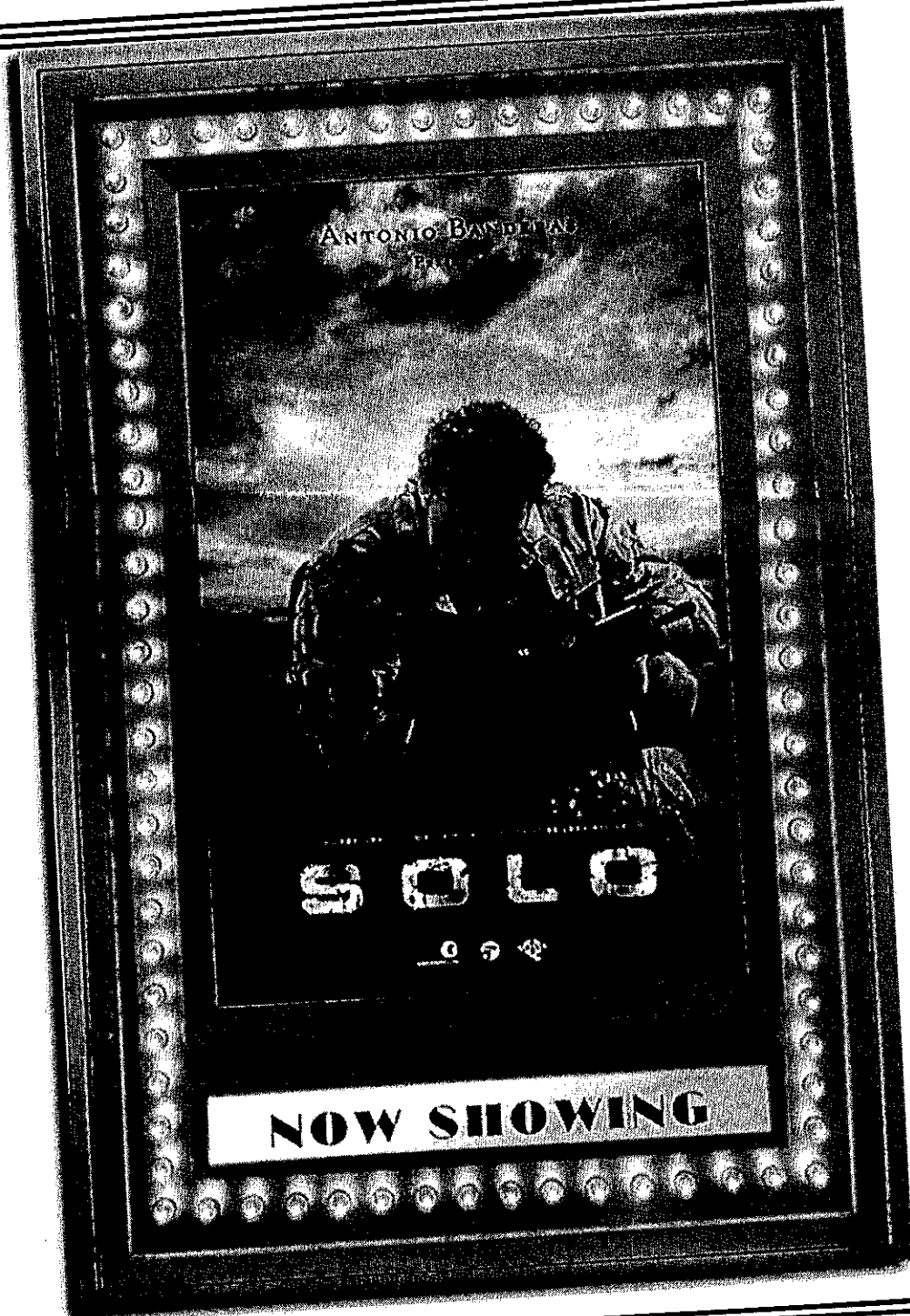
- 120 Volts
- 1.29 Amps
- 50/60 Hertz
- .9 watt Chaser Bulbs



Drawings and specifications for new poster cases to be installed on either side of entry doors of theater



New poster cases here



Rendering showing finished poster case to be installed on either side of entry doors.