



**City of Milwaukee
Department of Public
Works**

**Street Lighting
Program**

February, 2014



Existing Street Lighting Facilities

DPW Street Lighting Program

February, 2014

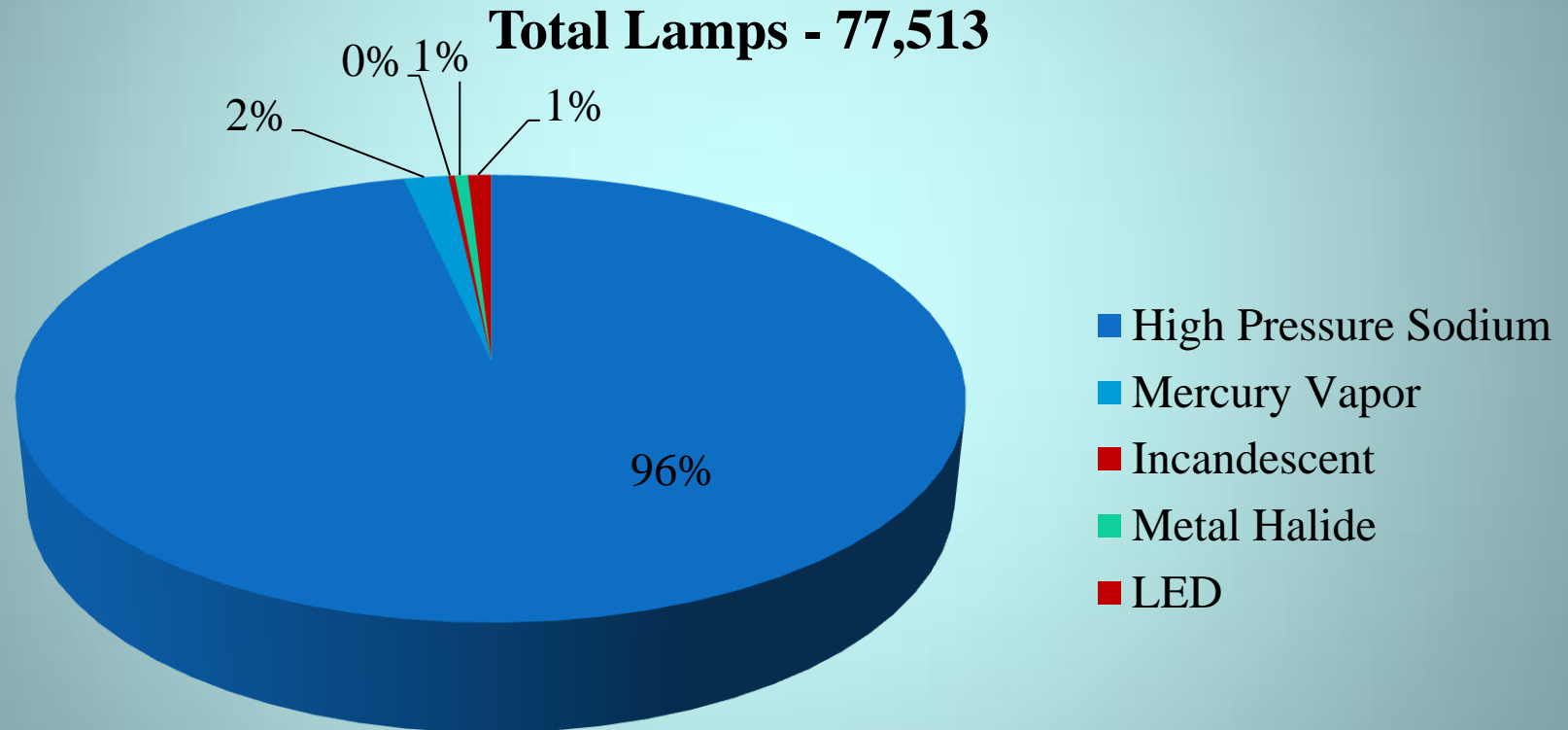
Street Lighting Facilities

(As of January 1, 2014)

- 1,291 Miles of Lighted Streets
- 251 Substations and Enclosures
- 68,540 Street Lights
 - 26,532 “Series” Lights
 - 41,597 “Multiple” Lights
- 8,815 Alley Lights
- 569 Specialty Lights
- 77,513 Total Lights Maintained by DPW

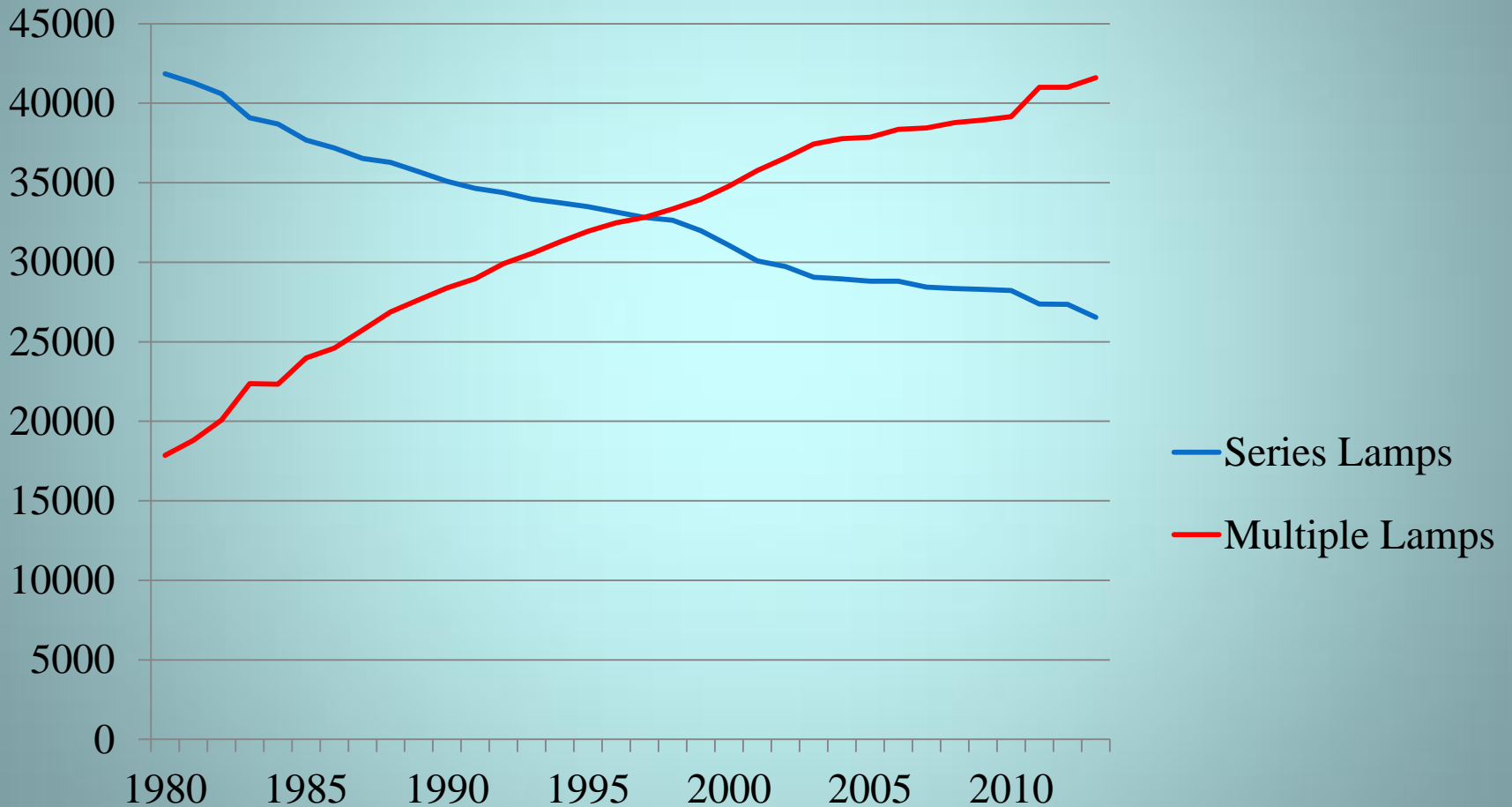
Street and Alley Light Lamp Types

(As of January 1, 2014)



Comparison of Number of Lamps on Series and Multiple Circuits

1980 through 2013



LED Lighting

- Current LED Lighting Units in Service
 - Historic Third Ward Lighting Fixtures Retrofit with LED Lights
 - LED Lights Installed in the Westlawn Area in Conjunction with Area Redevelopment
 - LED Light Fixtures Installed on Test Segments of S. Indiana Avenue and on S. 97th Street
- LED Harp Light Retrofits from Several Manufacturers Currently Being Tested on N. Market Street

Capital Improvement Program Elements

Paving Related Improvements



DPW Street Lighting Program

February, 2014

Paving Related Functions

- Cable and Other Underground Equipment Typically Damaged During Curb Removal on Paving Projects
- Work Performed During Paving
 - Place Cable and Other Facilities Overhead Prior To Paving to Maintain Lighting Operation During Construction
 - Protect and Adjust Facilities as Necessary for Equipment Remaining in Place
 - Restore/Upgrade Facilities During Various Stages of a Paving Project



Neighborhood Lighting Program

DPW Street Lighting Program

February, 2014



Neighborhood Lighting Program



DPW Street Lighting Program

February, 2014

Street and Alley Light Upgrades



DPW Street Lighting Program

February, 2014

Street and Alley Lighting Upgrades

- Provide New or Additional Alley Lights Based on City Lighting Standards Where Inadequate Lighting Exists
- Ongoing Program to Replace Mercury Vapor Lamps with High Pressure Sodium Lights



Series Circuit Replacement

DPW Street Lighting Program

February, 2014

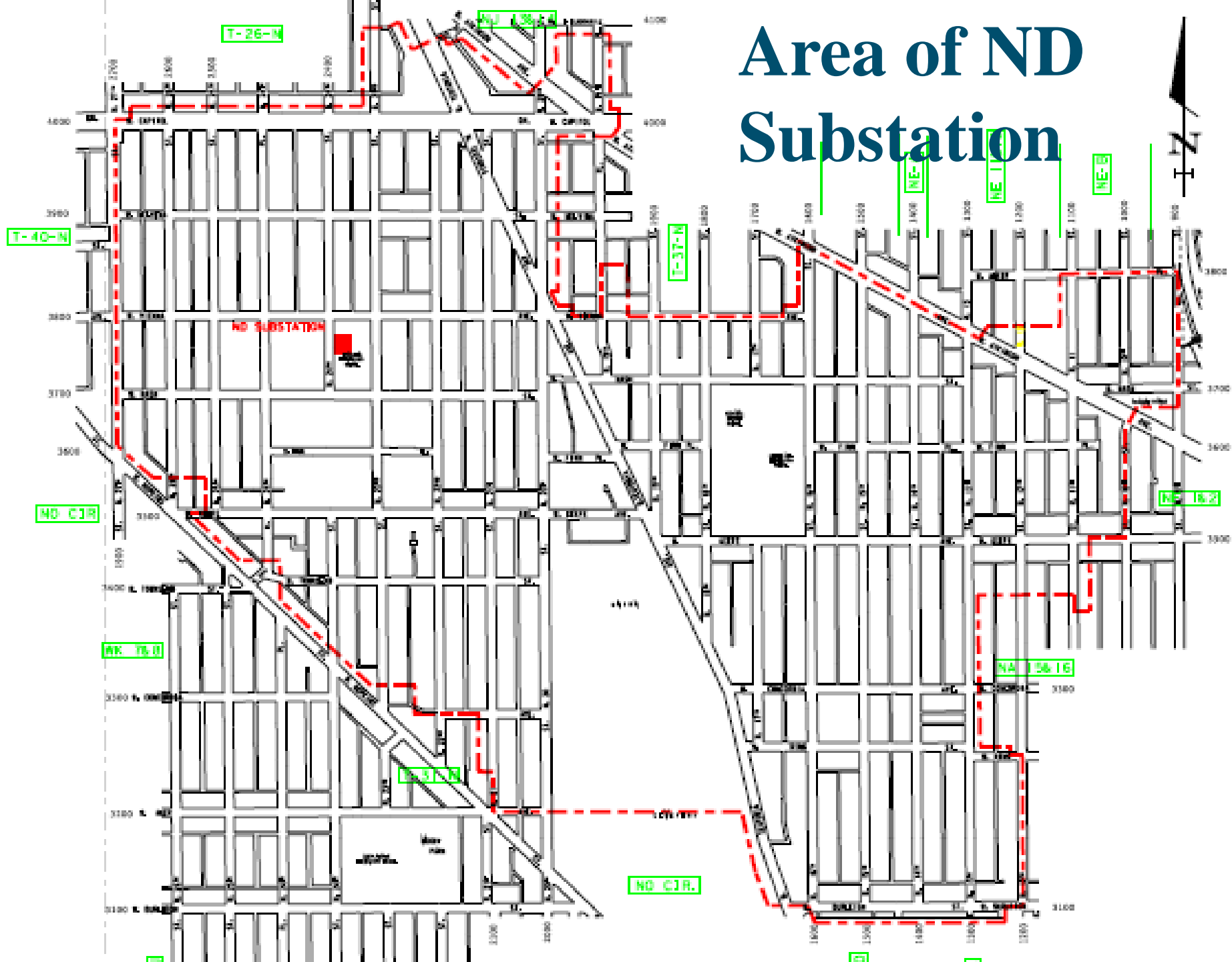
Series Circuit Replacement

- Outdated Technology Used Initially in the late 1910's and Early 1920's
- Designed Primarily for Use with Incandescent Lighting
- High Voltage System
- Aging Cable Plant Prone to Failure
- Transition Began to More Modern Multiple Circuitry in the 1950's
- Approximately 60% of Street Lights Currently Operating on Multiple Circuitry

Series Circuit Replacement

- Replacement of 22 Series Circuits from “ND” Substation Located at Vienna and 24th Was Completed In 2013
- 743 Street Lights converted from Series to Multiple Under this Multi-Year Conversion Project

Area of ND Substation

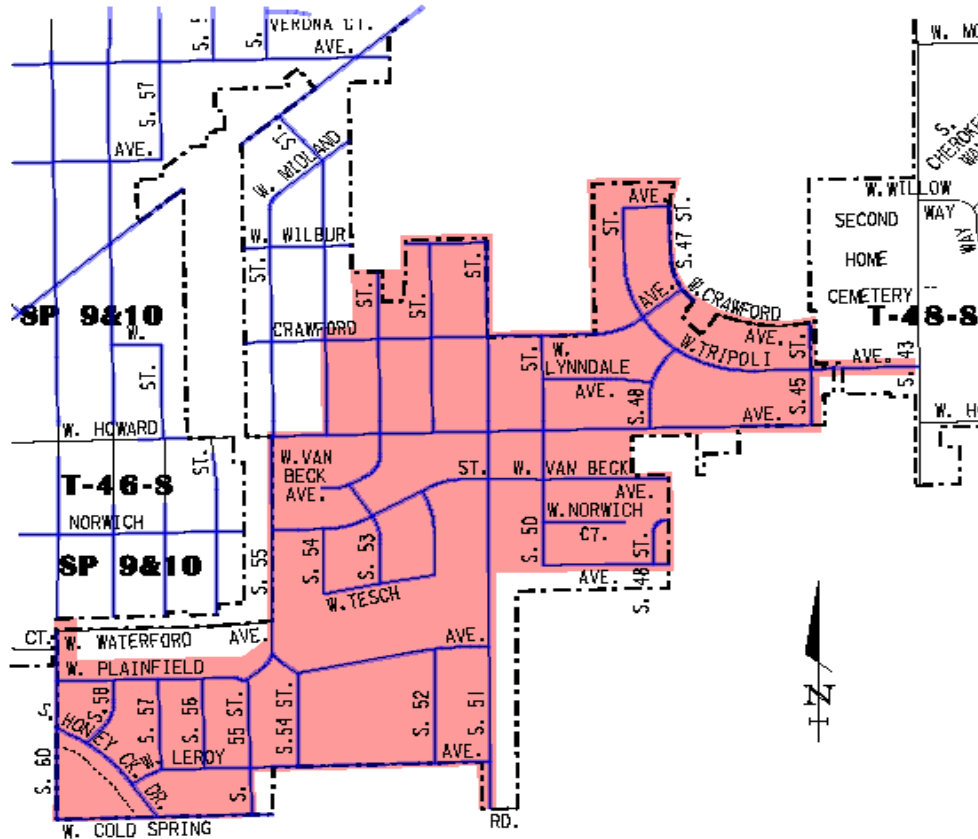


Series Circuit Replacement

(Cont.)

- Replacement of Series Circuits from the “T11S” Enclosure Located at 51st and Plainfield to be Designed and Constructed in 2014
- Provides Electrical Energy to 330 Street Lights
- 239 Outages from January 1, 2009 through December 31, 2013

- CIRCUIT T-11-S AREA**
- SERIES CIRCUITRY**
- CITY OF MILWAUKEE LIMITS LINE**



V:\BESLE\BESCITYMAPS\CIRCUIT_T-11-S.DWG

FEBRUARY 6, 2014

Series Circuit Replacement


(Cont.)

- Prior to 2014, Circuits Selected for Conversion Based on Failures from Substation/Enclosures
- Beginning in 2014, Circuits Chosen for Conversion Based on Performance of Individual Circuits

Summary of Circuit Outage Frequency

January 1, 2013 through December 31, 2013

Circuit Failures Jan 1, 2013 to Dec 31, 2013		
Station	Circuit	Frequency
T13C	E	25
SP	7	23
T1NW	4	17
SP	8	13
SR	15	13
NJ	10	13
T21S	ALL	13
SB	1&2	13
ND	7	13
NSM#20	B	13
SG	9	12
SG	11	12
NJ	8	12
T11S	2	12
SR	7	11
SP	2	11



Street Lighting Substations

DPW Street Lighting Program

February, 2014

Substation Repair and Enclosure Maintenance

- Replace Deteriorated Enclosures
 - Necessary due to deterioration from Weather and Environmental Conditions
- Replace or Upgrade Major Electrical Components

Master Control System Replacement

- Advanced Computer Based Master Control System Currently Being Deployed
 - Utilizes Radio Communications System
 - Controls Street Light On and Off Times
 - Fail Safe System at Each Enclosure to Turn Lights On and Off if Communications System Fails
 - Monitor Operation of Each Street Lighting Circuit
 - Detect Circuit Failures as They Occur
 - Reduce Response Times to Re-light a Circuit
 - Aids in Trouble shooting of Electrical Problems

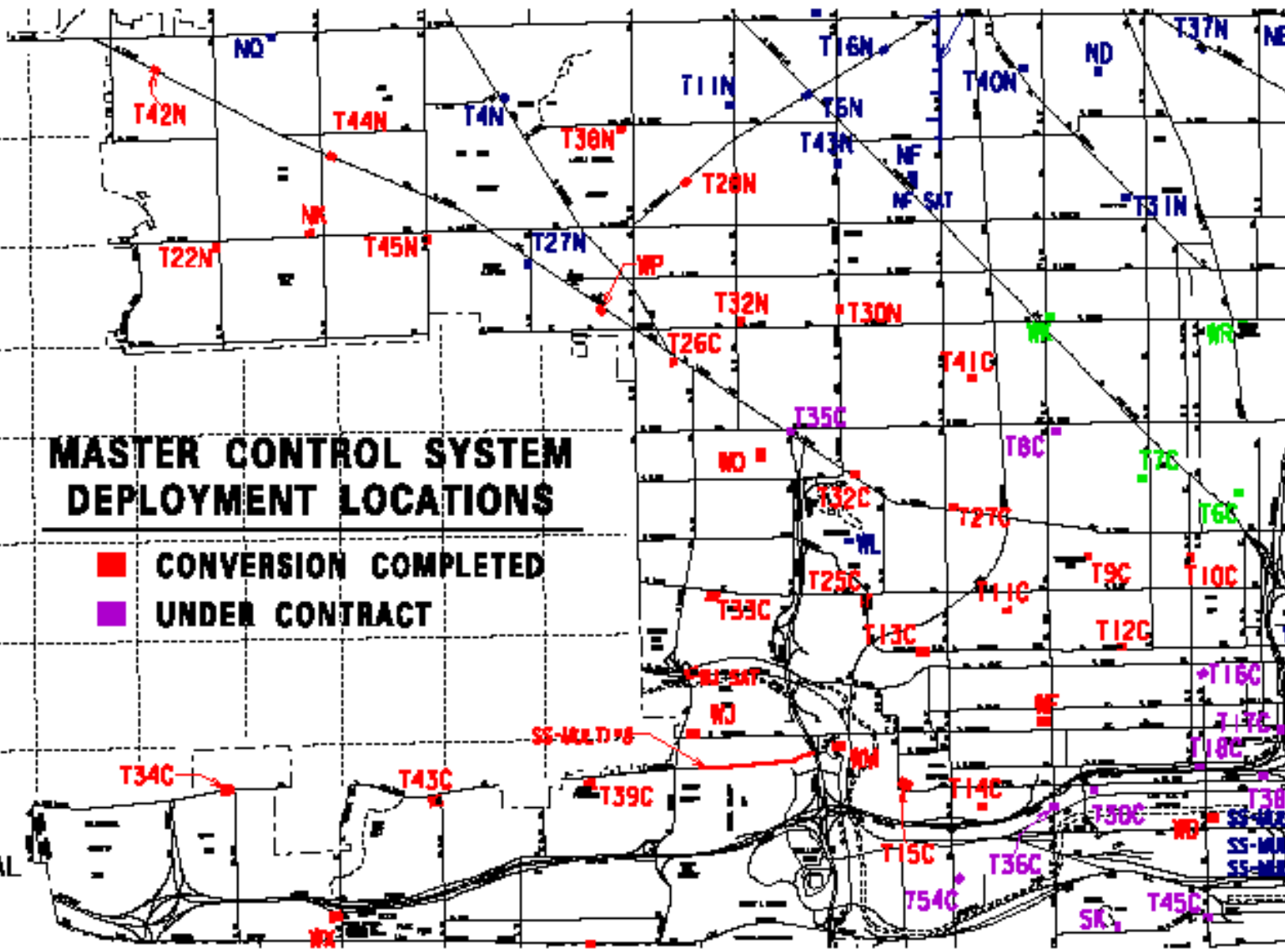
Master Control System Replacement (Cont.)

- Advanced Computer Based Master Control System Currently Being Deployed
 - Operational at 62 Stations
 - Design of an Additional 13 Stations to be completed in 2014, and Let to Contract in Late 2014 or Early 2015
 - System Anticipated to be Fully Operational in 2018 Based on Proposed Six Year Capital Improvement Program

00 CAPITOL
 00 MELVINA
 00 VIENNA ABERT
 00 NASH
 00 FINN
 00 KEEFE
 00 TOWNSEND
 00 CONCORDIA
 00 ALER
 00 BURLEIGH
 00 CHAMBERS
 00 LOCLST
 00 HADLEY
 00 CENTER
 00 CLARKE
 00 WRIGHT
 00 MEINECKE
 00 NORTH
 00 GARFIELD
 00 LLOYD
 00 BROWN
 00 RESERVOIR - VINE
 00 VINE
 00 WALNUT
 00 GALENA
 00 CHERRY
 00 VLIET
 00 MC KINLEY
 00 JUNEAU
 00 HIGHLAND
 00 STATE
 00 KILBOURN
 00 WELLS
 00 WISCONSIN
 00 MICHIGAN
 00 CLYBOURN
 00 ST PALL
 00 MT VERNON
 00 PARK HILL
 AIRVIEW - CANAL
 00 DIXON
 00 ADLER
 00 MAIN

MASTER CONTROL SYSTEM DEPLOYMENT LOCATIONS

- CONVERSION COMPLETED
- UNDER CONTRACT



500 CLYBURN
400 ST PAUL
300 MT VERNON
200 PARK HILL
FAIRVIEW - CANAL
200 DIXON
400 ADLER
600 MAIN

700 SCHLINGER
900 WALKER
1100 WASHINGTON
1300 MADISON
1400 GREENFIELD
1500 ORCHARD
1600 LAPHAM
1700 MITCHELL
1800 MAPLE

1900 BURNHAM
2000 ROGERS
2100 BECHER
2200 GRANT

2300 LINCOLN
2400 HAYES LINUS
2500 ARTHUR CONWAY
2600 HARRISON OTJEN

2700 CLEVELAND
2800 MONTANA
2900 DAKOTA IDAHO
3000 MANTOBA

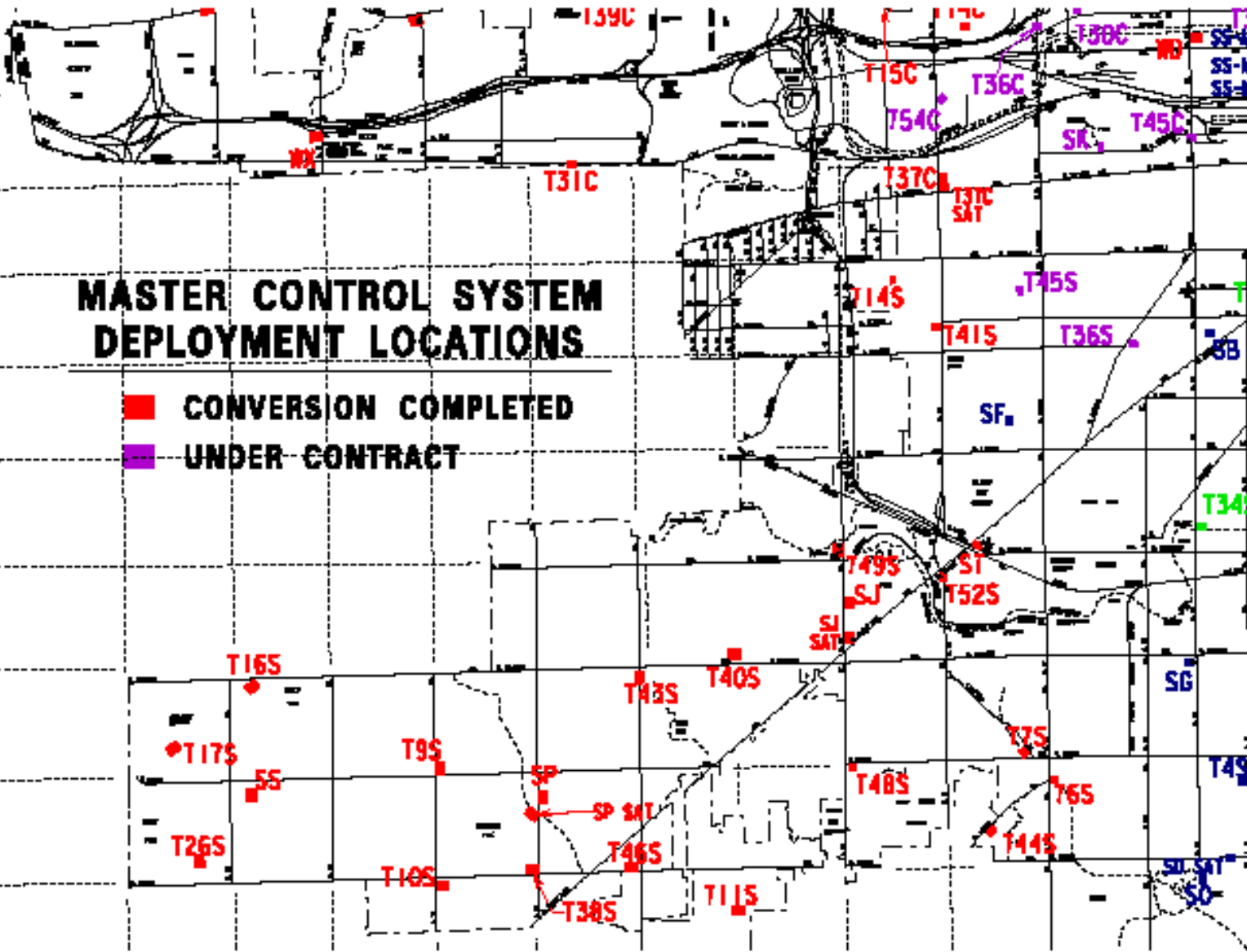
3100 OKLAHOMA
3200 EUCLID
3300 OHIO
3400 HOLT VERONA

3500 MORGAN
3600 WARMOUNT
3700 WILBUR
3800 CRAWFORD TRIPOLI

3900 HOWARD
4000 NORWICH VAN BECK
4100 WATERFORD

MASTER CONTROL SYSTEM DEPLOYMENT LOCATIONS

■ **CONVERSION COMPLETED**
■ **UNDER CONTRACT**



Other Pole, Cable and Equipment Upgrades



DPW Street Lighting Program

February, 2014

Other Pole, Cable and Equipment Upgrades

- Provides Funding to Address Needs Not Funded Under Other Budget Elements
- Replace Deteriorated Poles
- Replace Failing Cable

Other Pole, Cable and Equipment Upgrades

- **Replacement of Deteriorated Decorative Steel Poles**
 - First Failures Occurred in Late 2007
 - Poles Inspected Every Year
 - Group Replacement to begin in 2014 on Shepherds Crook Style Lighting Fixtures if Capital Funds are Available

Corroded Steel Pole Bases



Other Pole, Cable and Equipment Upgrades

- **Replace Failed Double Harp Arms on Wisconsin Avenue**
 - Failure due to Corroded Aluminum Castings Found in Late Fall, 2012
 - Replacement of Corroded Arms Completed in 2013
 - Total Cost of Replacement was \$545,000

Corroded Double Harp Arm



DPW Street Lighting Program

February, 2014

Uncollectable Knockdowns



DPW Street Lighting Program

February, 2014

Uncollectable Pole and Equipment Knockdowns

- Applied to the Cost of Equipment Replacement Resulting From Traffic Accidents, Vandalism or Other Damage when Costs Cannot be Recovered from Parties Responsible For Damage
- First Included in Capital Program in 2004
- Total Expenditures of \$370,000 for this Purpose for 2013 to Date (\$468,000 in 2012)