

NATIONAL HERITAGE ACADEMIES  
MILWAUKEE SCHOLARS CHARTER SCHOOL

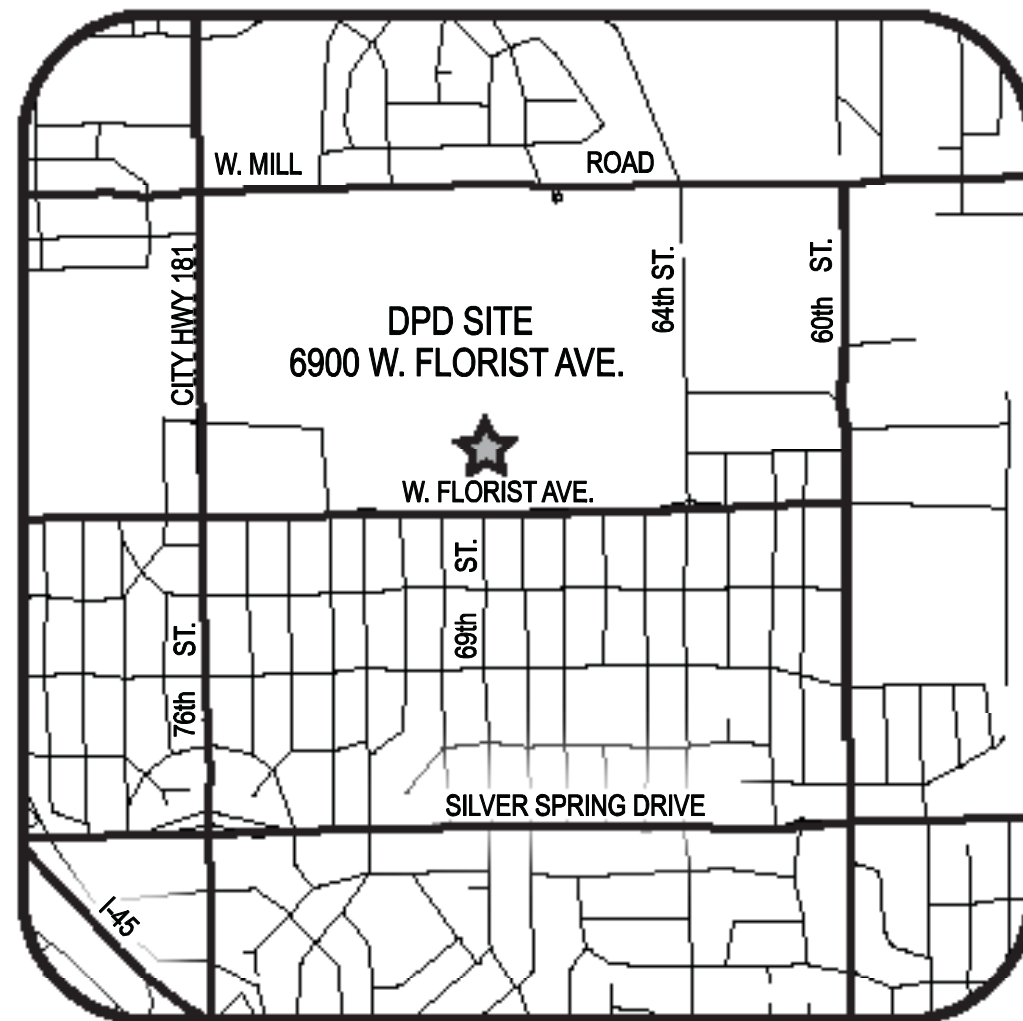
DETAILED PLANNED DEVELOPMENT



One Honey Creek Corporate Center  
125 South 84th Street,  
Suite 401  
Milwaukee, WI 53214-1470  
414 / 259 1500  
414 / 259 0037 fax  
www.graef-usa.com

CONSULTANTS:

Vicinity Map



Sheet Index

- DPD-1 COVER SHEET/VICINITY MAP
- DPD-2 ALTA/ACSM LAND TITLE SURVEY
- DPD-3 PROPOSED PROJECT BOUNDARY DESCRIPTION
- DPD-4 BUILDING AND PARKING SITE PLAN
- DPD-5 PERIMETER FACADE STANDARDS
- DPD-6 PROPOSED UTILITY PLAN
- DPD-7 PROPOSED GRADING PLAN
- DPD-8 PROPOSED LANDSCAPE PLAN
- DPD-9A PROPOSED SIGNAGE PLAN
- DPD-9B PROPOSED SIGNAGE DETAILS
- DPD-10A PROPOSED NORTH AND WEST BUILDING ELEVATIONS
- DPD-10B PROPOSED SOUTH AND EAST BUILDING ELEVATIONS

PROJECT TITLE:

NATIONAL HERITAGE ACADEMIES  
6900 WEST FLORIST AVENUE  
MILWAUKEE, WISCONSIN

ISSUE:

PROJECT INFORMATION:

PROJECT NUMBER: 20100298.00  
DATE: 11/11/10  
DRAWN BY: FKO  
CHECKED BY: MJR  
APPROVED BY: JTM  
SCALE: N.T.S.

SHEET TITLE:

COVER SHEET/  
VICINITY MAP

SHEET NUMBER:

CITY OF MILWAUKEE  
FILE NO. 100874

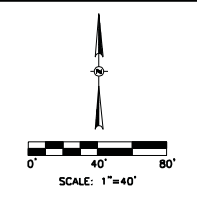
**DPD-1**

One Honey Creek Corporate Center  
125 South 84th Street,  
Suite 401  
Milwaukee, WI 53214-1470  
414 / 259 1500  
414 / 259 0037 fax  
www.graef-usa.com

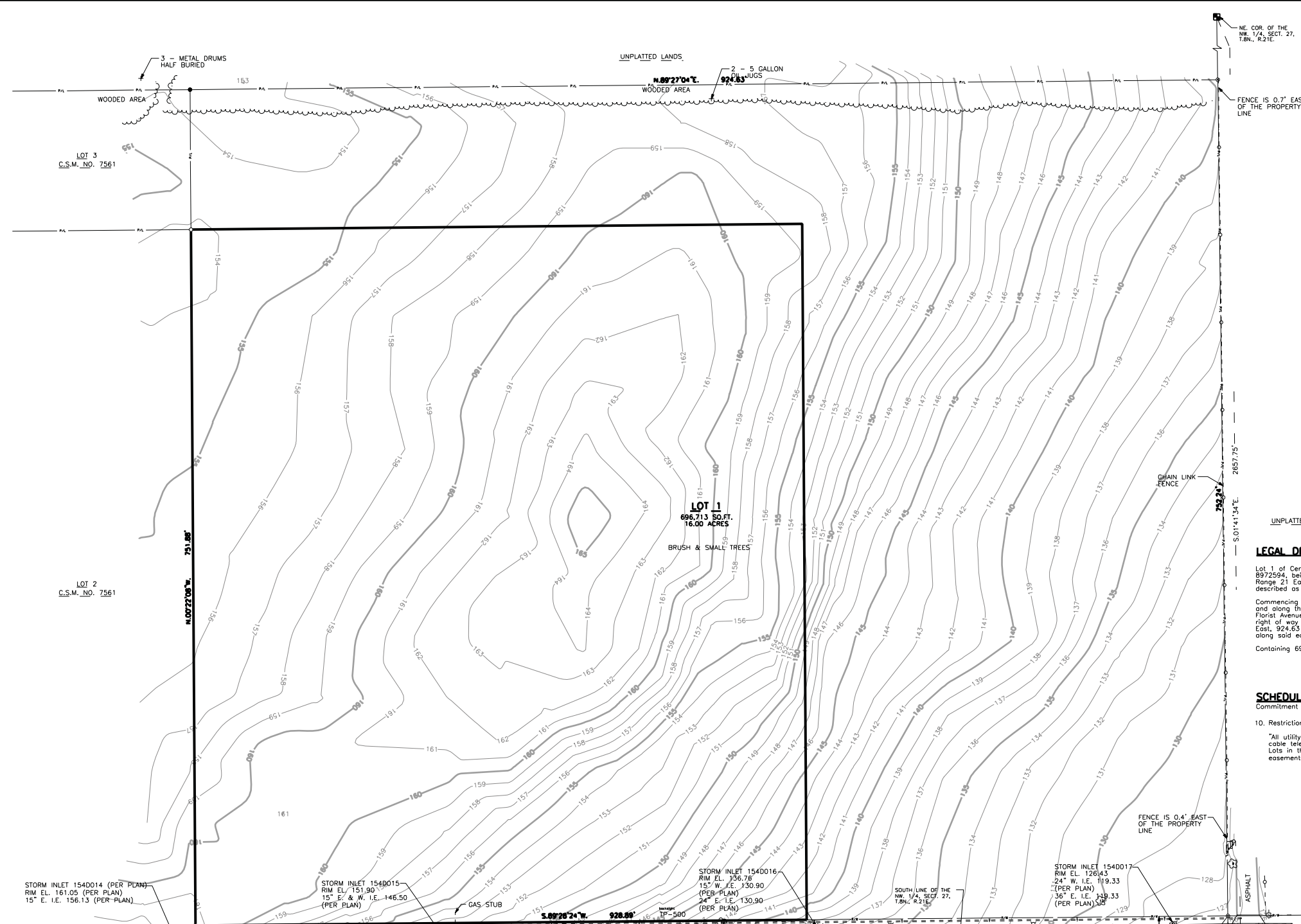
CONSULTANTS:

PROJECT TITLE:  
**NATIONAL HERITAGE ACADEMIES  
6900 WEST FLORIST AVENUE  
MILWAUKEE, WISCONSIN**

ISSUE:



- LEGEND**
- ▲ TRAVERSE POINT
  - 1" IRON PIPE FOUND
  - 1" IRON PIPE SET
  - ⊙ REBAR FOUND
  - CONCRETE MONUMENT W/BRASS CAP
  - ⊕ STREET LIGHTING JUNCTION BOX
  - ⊕ LIGHT POLE
  - ⊕ POWER POLE
  - MANHOLE
  - ⊕ TELEPHONE MANHOLE
  - ⊕ STORM INLET
  - ⊕ WATER VALVE
  - ⊕ WATER SERVICE VALVE
  - ⊕ FIRE HYDRANT
  - ⊕ GAS SERVICE VALVE
  - ⊕ GAS VALVE
  - ⊕ SIGN
  - ⊕ DECIDUOUS TREE
  - TREE LINE
  - BURIED STREET LIGHTING LINE
  - BURIED WATER SERVICE
  - BURIED WATER MAIN
  - BURIED SANITARY LATERAL
  - BURIED SANITARY SEWER
  - BURIED STORM SEWER

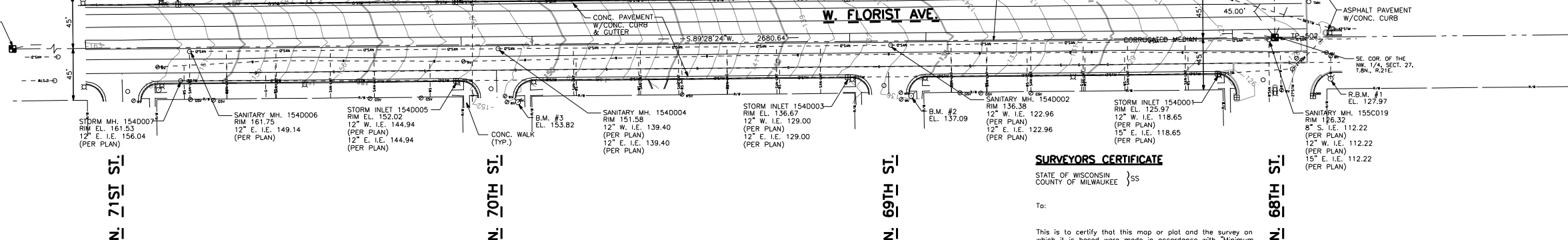


**LEGAL DESCRIPTION**

Lot 1 of Certified Survey Map No. 7561, recorded on March 10, 2005 as Document No. 8972594, being part of the Southeast 1/4 of Northwest 1/4 of Section 27, Township 8 North, Range 21 East, in the City of Milwaukee, County of Milwaukee, Wisconsin, more particularly described as follows:  
Commencing at the southeast corner of said Northwest 1/4; thence North 01°41'34" West, on and along the east line of said Northwest 1/4, 45.00 feet to the north right of way line of West Florist Avenue and the point of beginning; thence South 89°28'24" West, on and along said north right of way line, 928.89 feet; thence North 00°22'08" West, 751.88 feet; thence North 89°27'04" East, 924.53 feet to the east line of said Northwest 1/4; thence South 00°41'34" East, on and along said east line, 752.24 to the point of beginning.  
Containing 696,974 square feet (16.000 acres), more or less.

**SCHEDULE B-11 FROM TITLE COMMITMENT NO. 1245704**  
Commitment dated 10/14/10

10. Restrictions contained on Certified Survey Map No. 7561, reciting as follows:  
"All utility lines to provide electric power and telephone services and cable television or communications systems line or cables to all Lots in the certified survey map shall be installed underground in easements provided therefore, where feasible."



CITY OF MILWAUKEE  
FILE NO. 100874

PROJECT INFORMATION:  
PROJECT NUMBER: 20100298.00  
DATE: 10/27/10  
DRAWN BY: FKO  
CHECKED BY: MJR  
APPROVED BY: JTM  
SCALE: 1" = 40'

SHEET TITLE:

ALTA/ACSM LAND  
TITLE SURVEY

SHEET NUMBER:

**SURVEYORS CERTIFICATE**

STATE OF WISCONSIN  
COUNTY OF MILWAUKEE } SS

To:

This is to certify that this map or plat and the survey on which it is based were made in accordance with "Minimum Standard Detail Requirements for ALTA/ACSM Land Title Surveys," jointly established and adopted by ALTA and NSPS in 2005, and includes items 1, 4, 5, 8 & 11A of Table A thereof. Pursuant to the Accuracy Standards as adopted by ALTA and NSPS and in effect on the date of this certification, undersigned further certifies that in my professional opinion, as a land surveyor registered in the State of Wisconsin, the Relative Positional Accuracy of this survey does not exceed that which is specified therein.

Date: \_\_\_\_\_  
(signed): \_\_\_\_\_ (seal)  
Registration No. \_\_\_\_\_

**REFERENCE BEARING**

All bearings are referenced to the South line of the Northwest 1/4 of Section 27, T.8N., R.21E., which bears S.89°28'24"W. and is referenced to Grid North of the Wisconsin State Plane Coordinate System, South Zone, FEB. 2008 DATUM

**BENCH MARKS**

- B.M. #1 - Found chiseled cross on top of nozzle of fire hydrant at the southeast corner of W. Florist Ave. and N. 68th St. - Elevation = 127.97.
- B.M. #2 - Northwest bolt on top flange of fire hydrant at the southeast corner of W. Florist Ave. and N. 69th St. - Elevation = 137.09.
- B.M. #3 - Northwest bolt on top flange of fire hydrant at the southeast corner of W. Florist Ave. and N. 70th St. - Elevation = 153.82.

**GENERAL NOTES**

1. The underground utilities shown have been located from field survey information and existing drawings. The surveyor makes no guarantee that the underground utilities shown comprise all such utilities in the area, either in service or abandoned. The surveyor further does not warrant that the underground utilities shown are in the exact location indicated although he does certify that they are located as accurately as possible from information available. The surveyor has not physically located the underground utilities.

One Honey Creek Corporate Center  
125 South 84th Street,  
Suite 401  
Milwaukee, WI 53214-1470  
414 / 259 1500  
414 / 259 0037 fax  
www.graef-usa.com

CONSULTANTS:

PROJECT TITLE:

NATIONAL HERITAGE ACADEMIES  
6900 WEST FLORIST AVENUE  
MILWAUKEE, WISCONSIN

ISSUE:

**LEGEND**

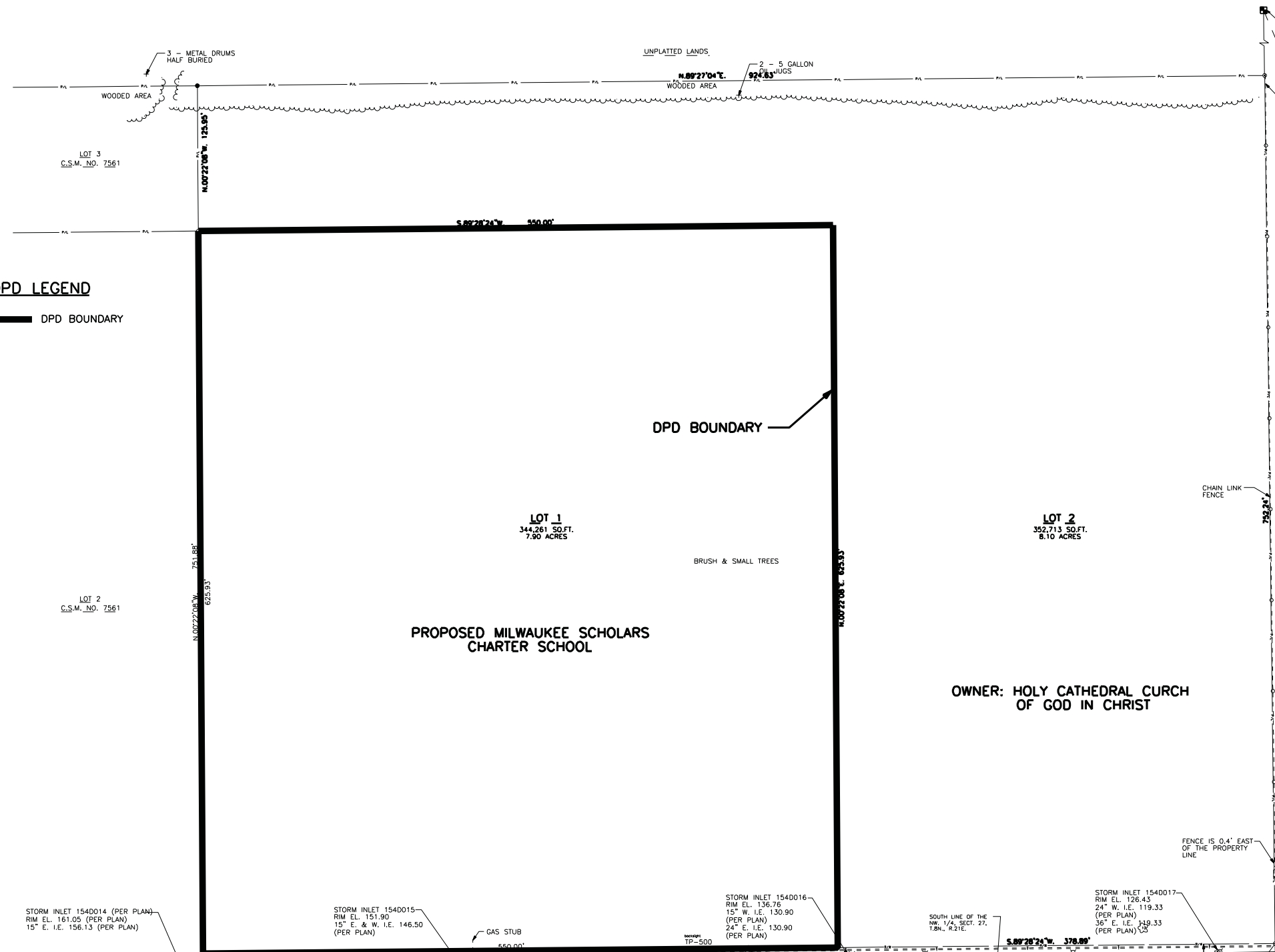
▲	TRAVERSE POINT
○	1" IRON PIPE FOUND
●	1" IRON PIPE SET
⊙	REBAR FOUND
■	CONCRETE MONUMENT W/BRASS CAP
⊕	STREET LIGHTING JUNCTION BOX
⊕	LIGHT POLE
⊕	POWER POLE
○	MANHOLE
○	TELEPHONE MANHOLE
⊕	STORM INLET
⊕	WATER VALVE
⊕	WATER SERVICE VALVE
⊕	FIRE HYDRANT
⊕	GAS SERVICE VALVE
⊕	GAS VALVE
⊕	SIGN
⊕	DECIDUOUS TREE
---	TREE LINE
---	BURIED STREET LIGHTING LINE
---	BURIED WATER SERVICE
---	BURIED WATER MAIN
---	BURIED SANITARY LATERAL
---	BURIED SANITARY SEWER
---	BURIED STORM SEWER

**DPD LEGAL DESCRIPTION**

That part of Lot 1 of Certified Survey Map No. 7561 in the Southeast 1/4 of the Northwest 1/4 of Section 27, Township 8 North, Range 21 East, in the City of Milwaukee, Milwaukee County, Wisconsin, more particularly described as follows:  
Commencing at the southeast corner of said Northwest 1/4; thence North 00°41'34" West, on and along the east line of said Northwest 1/4, 45.00 feet to the north right of way line of West Florist Avenue and the point of beginning; thence South 89°28'24" West, on and along said north right of way, 378.88 feet; thence North 00°22'08" West, 625.93 feet; thence South 89°28'24" West, 550.00 feet to the west line of said Lot 1; thence North 00°22'08" West, on and along said west line, 125.95 to the northwest corner of said Lot 1; thence North 69°27'04" East, on and along the north line of said Lot 1, 824.63 feet to the northeast corner of said Lot 1; thence South 00°41'34" East, on and along the east line of said Lot 1, 752.24 to the point of beginning.  
Containing 352,713 square feet (8.10 acres), more or less.

**DPD LEGEND**

DPD BOUNDARY



**GENERAL NOTES**

1. The underground utilities shown have been located from field survey information and existing drawings. The surveyor makes no guarantee that the underground utilities shown comprise all such utilities in the area, either in service or abandoned. The surveyor further does not warrant that the underground utilities shown are in the exact location indicated although he does certify that they are located as accurately as possible from information available. The surveyor has not physically located the underground utilities.

**BENCH MARKS**

R.B.M. #1 - Found chiseled cross on top of nozzle of fire hydrant at the southeast corner of W. Florist Ave. and N. 68th St. - Elevation = 127.97.  
B.M. #2 - Northwest bolt on top flange of fire hydrant at the southeast corner of W. Florist Ave. and N. 69th St. - Elevation = 137.09.  
B.M. #3 - Northwest bolt on top flange of fire hydrant at the southeast corner of W. Florist Ave. and N. 70th St. - Elevation = 153.82.

**REFERENCE BEARING**

All bearings are referenced to the South line of the Northwest 1/4 of Section 27, T.8N., R.21E., which bears S.89°28'24"W. and is referenced to Grid North of the Wisconsin State Plane Coordinate System, South Zone, FEB. 2008 DATUM

CITY OF MILWAUKEE  
FILE NO. 100874

**PROJECT INFORMATION:**

PROJECT NUMBER: 20100298.00  
DATE: 10/27/10  
DRAWN BY: FKO  
CHECKED BY: MJR  
APPROVED BY: JTM  
SCALE: 1" = 40'

**SHEET TITLE:**

PROPOSED PROJECT  
BOUNDARY DESCRIPTION

SHEET NUMBER:

One Honey Creek Corporate Center  
125 South 84th Street,  
Suite 401  
Milwaukee, WI 53214-1470  
414 / 259 1500  
414 / 259 0037 fax  
www.graef-usa.com

CONSULTANTS:

PROJECT TITLE:

NATIONAL HERITAGE ACADEMIES  
6900 WEST FLORIST AVENUE  
MILWAUKEE, WISCONSIN

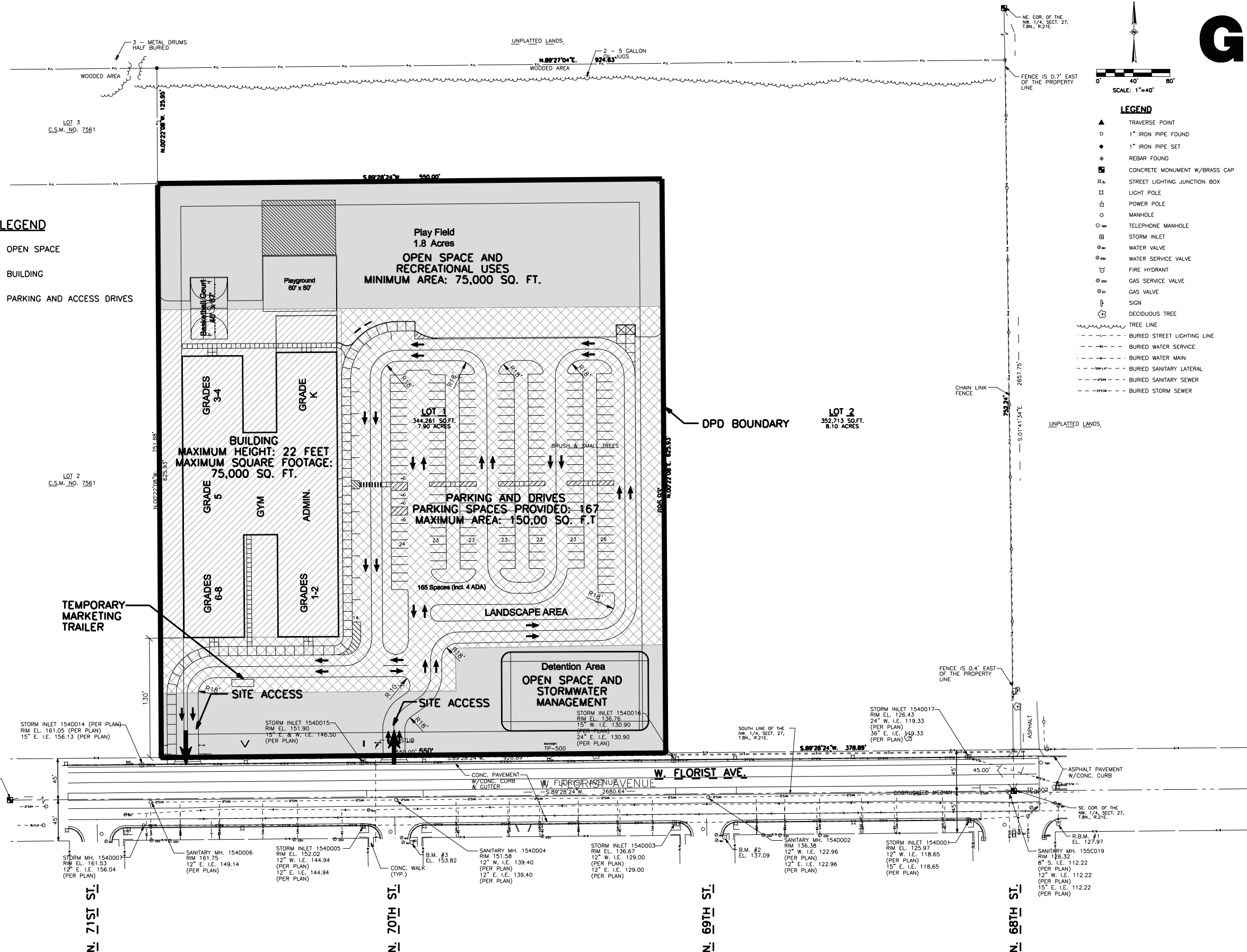
ISSUE:

**LEGEND**

▲	TRAVERSE POINT
○	1" IRON PIPE FOUND
●	1" IRON PIPE SET
⊙	REBAR FOUND
■	CONCRETE MONUMENT W/BRASS CAP
⊕	STREET LIGHTING JUNCTION BOX
⊕	LIGHT POLE
⊕	POWER POLE
○	MANHOLE
⊕	TELEPHONE MANHOLE
⊕	STORM INLET
⊕	WATER VALVE
⊕	WATER SERVICE VALVE
⊕	FIRE HYDRANT
⊕	GAS SERVICE VALVE
⊕	GAS VALVE
⊕	SIGN
⊕	DECIDUOUS TREE
---	TREE LINE
---	BURIED STREET LIGHTING LINE
---	BURIED WATER SERVICE
---	BURIED WATER MAIN
---	BURIED SANITARY LATERAL
---	BURIED SANITARY SEWER
---	BURIED STORM SEWER

**DPD LEGEND**

□	OPEN SPACE
▨	BUILDING
▩	PARKING AND ACCESS DRIVES



**GENERAL NOTES**

- The underground utilities shown have been located from field survey information and existing drawings. The surveyor makes no guarantees that the underground utilities shown comprise all such utilities in the area, either in service or abandoned. The surveyor further does not warrant that the underground utilities shown are in the exact location indicated although he does certify that they are located as accurately as possible from information available. The surveyor has not physically located the underground utilities.

**BENCH MARKS**

R.B.M. #1 - Found chiseled cross on top of nozzle of fire hydrant at the southeast corner of W. Florist Ave. and N. 68th St. - Elevation = 127.97.

B.M. #2 - Northwest bolt on top flange of fire hydrant at the southeast corner of W. Florist Ave. and N. 69th St. - Elevation = 137.09.

B.M. #3 - Northwest bolt on top flange of fire hydrant at the southeast corner of W. Florist Ave. and N. 70th St. - Elevation = 153.82.

**REFERENCE BEARING**

All bearings are referenced to the South line of the Northwest 1/4 of Section 27, T.8N., R.21E., which bears S.89°28'24"W. and is referenced to Grid North of the Wisconsin State Plane Coordinate System, South Zone, FEB. 2008 DATUM

12/22/2010 3:40:44 PM L:\Jobs\2010\20100298\CAD\Site\grn\00\C\_00\_DPD-4\_298.dgn

CITY OF MILWAUKEE  
FILE NO. 100874

**PROJECT INFORMATION:**

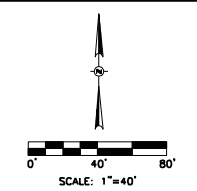
PROJECT NUMBER: 20100298.00  
DATE: 10/27/10  
DRAWN BY: FKO  
CHECKED BY: MJR  
APPROVED BY: JTM  
SCALE: 1" = 40'

**SHEET TITLE:**

PROPOSED BUILDING AND  
PARKING SITE PLAN

**SHEET NUMBER:**

One Honey Creek Corporate Center  
125 South 84th Street,  
Suite 401  
Milwaukee, WI 53214-1470  
414 / 259 1500  
414 / 259 0037 fax  
[www.graef-usa.com](http://www.graef-usa.com)



**LEGEND**

- ▲ TRAVERSE POINT
- 1" IRON PIPE FOUND
- 1" IRON PIPE SET
- ⊙ REBAR FOUND
- ⊞ CONCRETE MONUMENT W/BRASS CAP
- ⊞ STREET LIGHTING JUNCTION BOX
- ⊞ LIGHT POLE
- ⊞ POWER POLE
- MANHOLE
- TELEPHONE MANHOLE
- ⊞ STORM INLET
- ⊞ WATER VALVE
- ⊞ WATER SERVICE VALVE
- ⊞ FIRE HYDRANT
- ⊞ GAS SERVICE VALVE
- ⊞ GAS VALVE
- ⊞ SIGN
- ⊞ DECIDUOUS TREE
- TREE LINE
- BURIED STREET LIGHTING LINE
- BURIED WATER SERVICE
- BURIED WATER MAIN
- BURIED SANITARY LATERAL
- BURIED SANITARY SEWER
- BURIED STORM SEWER

CONSULTANTS:

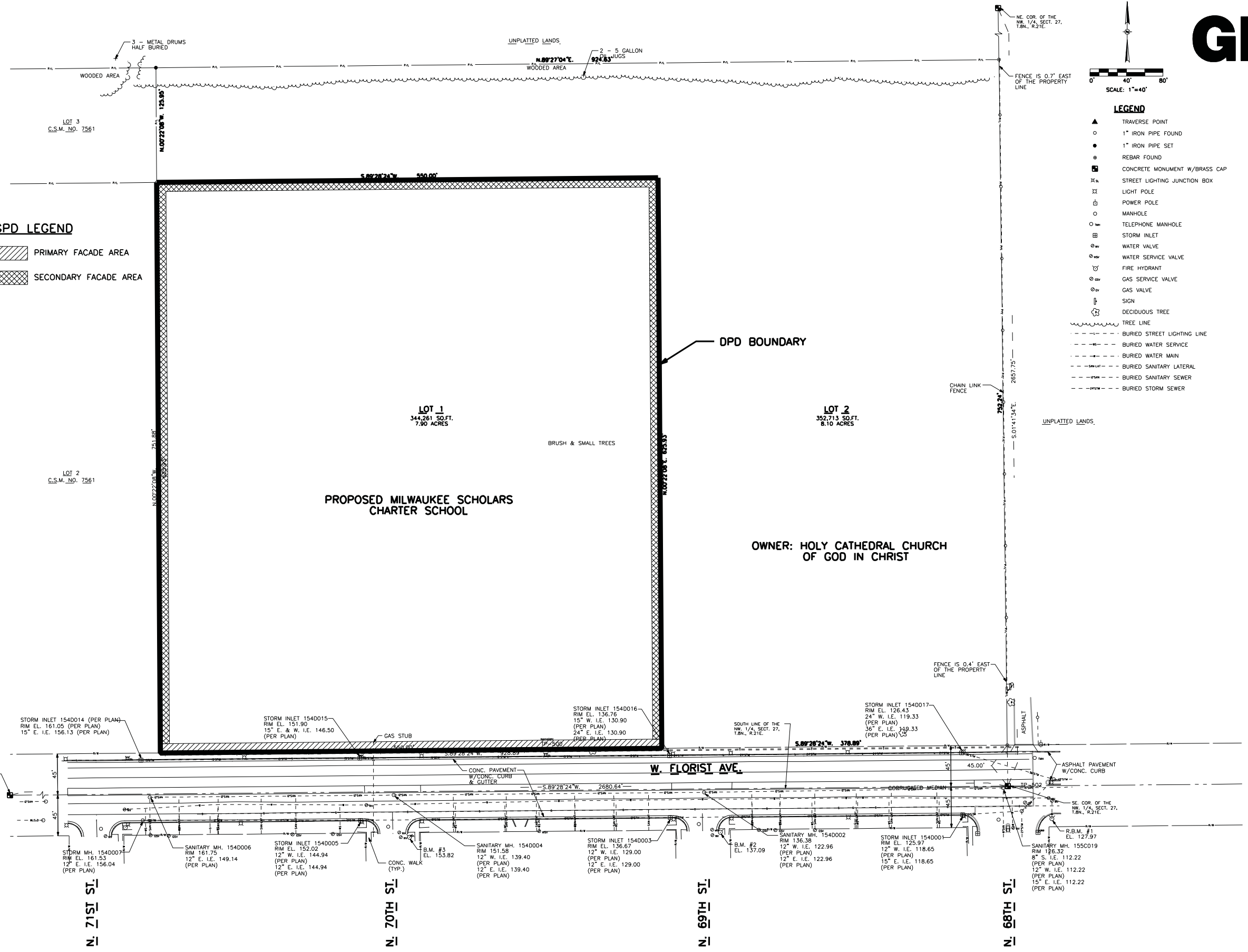
PROJECT TITLE:

NATIONAL HERITAGE ACADEMIES  
6900 WEST FLORIST AVENUE  
MILWAUKEE, WISCONSIN

ISSUE:

**GPD LEGEND**

- PRIMARY FACADE AREA
- SECONDARY FACADE AREA



**GENERAL NOTES**

1. The underground utilities shown have been located from field survey information and existing drawings. The surveyor makes no guarantees that the underground utilities shown comprise all such utilities in the area, either in service or abandoned. The surveyor further does not warrant that the underground utilities shown are in the exact location indicated although he does certify that they are located as accurately as possible from information available. The surveyor has not physically located the underground utilities.

**BENCH MARKS**

- B.M. #1 - Found chiseled cross on top of nozzle of fire hydrant at the southeast corner of W. Florist Ave. and N. 68th St. - Elevation = 127.97.
- B.M. #2 - Northwest bolt on top flange of fire hydrant at the southeast corner of W. Florist Ave. and N. 69th St. - Elevation = 137.09.
- B.M. #3 - Northwest bolt on top flange of fire hydrant at the southeast corner of W. Florist Ave. and N. 70th St. - Elevation = 153.82.

**REFERENCE BEARING**

All bearings are referenced to the South line of the Northwest 1/4 of Section 27, T.8N., R.21E., which bears S.89°28'24"W. and is referenced to Grid North of the Wisconsin State Plane Coordinate System, South Zone, FEB. 2008 DATUM

12/22/2010 3:41:05 PM L:\Jobs\2010\20100298\CAD\Site\gpn\00\C\_00\_DPD-5\_298.dgn

CITY OF MILWAUKEE  
FILE NO. 100874

**PROJECT INFORMATION:**

PROJECT NUMBER: 20100298.00  
DATE: 11/11/10  
DRAWN BY: FKO  
CHECKED BY: JTM  
APPROVED BY: JTM  
SCALE: 1" = 40'

SHEET TITLE:

PERIMETER FACADE STANDARDS

SHEET NUMBER:

One Honey Creek Corporate Center  
125 South 84th Street,  
Suite 401  
Milwaukee, WI 53214-1470  
414 / 259 1500  
414 / 259 0037 fax  
www.graef-usa.com

- LEGEND**
- ▲ TRAVERSE POINT
  - 1" IRON PIPE FOUND
  - 1" IRON PIPE SET
  - ⊙ REBAR FOUND
  - ⊠ CONCRETE MONUMENT W/BRASS CAP
  - ⊠ STREET LIGHTING JUNCTION BOX
  - ⊠ LIGHT POLE
  - ⊠ POWER POLE
  - MANHOLE
  - TELEPHONE MANHOLE
  - ⊠ STORM INLET
  - ⊠ WATER VALVE
  - ⊠ WATER SERVICE VALVE
  - ⊠ FIRE HYDRANT
  - ⊠ GAS HYDRANT VALVE
  - ⊠ GAS VALVE
  - ⊠ SIGN
  - ⊠ DECIDUOUS TREE
  - TREE LINE
  - BURIED STREET LIGHTING LINE
  - BURIED WATER SERVICE
  - BURIED WATER MAIN
  - BURIED SANITARY LATERAL
  - BURIED SANITARY SEWER
  - BURIED STORM SEWER

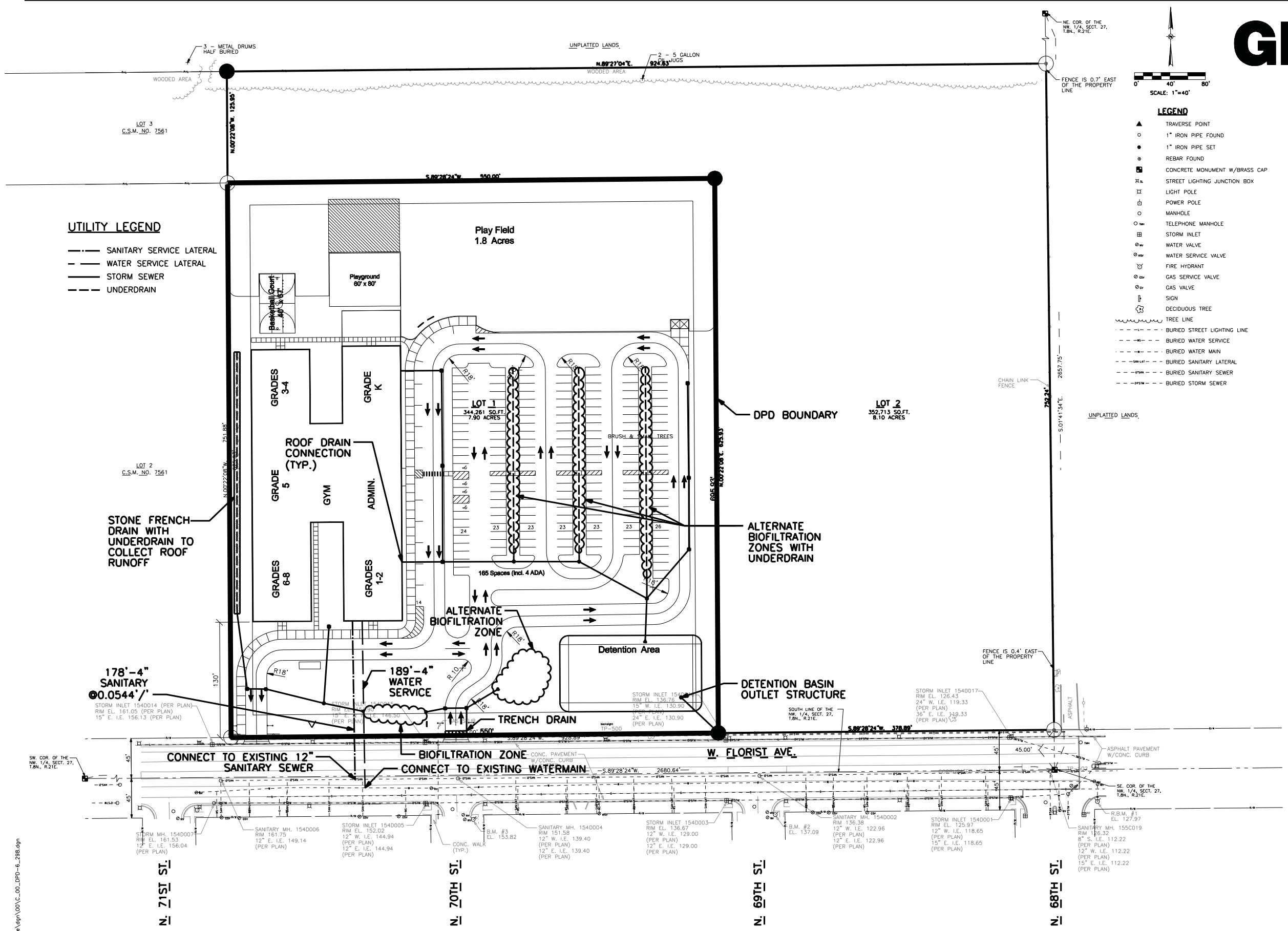
CONSULTANTS:

PROJECT TITLE:

NATIONAL HERITAGE ACADEMIES  
6900 WEST FLORIST AVENUE  
MILWAUKEE, WISCONSIN

ISSUE:

- UTILITY LEGEND**
- SANITARY SERVICE LATERAL
  - WATER SERVICE LATERAL
  - STORM SEWER
  - UNDERDRAIN



**GENERAL NOTES**

1. The underground utilities shown have been located from field survey information and existing drawings. The surveyor makes no guarantees that the underground utilities shown comprise all such utilities in the area, either in service or abandoned. The surveyor further does not warrant that the underground utilities shown are in the exact location indicated although he does certify that they are located as accurately as possible from information available. The surveyor has not physically located the underground utilities.

**BENCH MARKS**

R.B.M. #1 - Found chiseled cross on top of nozzle of fire hydrant at the southeast corner of W. Florist Ave. and N. 68th St. - Elevation = 127.97.  
B.M. #2 - Northwest bolt on top flange of fire hydrant at the southeast corner of W. Florist Ave. and N. 69th St. - Elevation = 137.09.  
B.M. #3 - Northwest bolt on top flange of fire hydrant at the southeast corner of W. Florist Ave. and N. 70th St. - Elevation = 153.82.

**REFERENCE BEARING**

All bearings are referenced to the South line of the Northwest 1/4 of Section 27, T.8N., R.21E., which bears S.89°28'24"W. and is referenced to Grid North of the Wisconsin State Plane Coordinate System, South Zone, FEB. 2008 DATUM

12/22/2010 3:41:49 PM L:\Jobs\2010\20100298\CAD\Sheets\00\00\_C\_00\_DPD-6\_298.dgn

CITY OF MILWAUKEE  
FILE NO. 100874

**PROJECT INFORMATION:**

PROJECT NUMBER: 20100298.00  
DATE: 10/27/10  
DRAWN BY: FKO  
CHECKED BY: MJR  
APPROVED BY: JTM  
SCALE: 1" = 40'

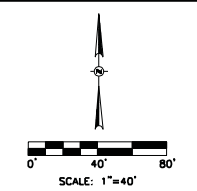
**SHEET TITLE:**

PROPOSED UTILITY PLAN

**SHEET NUMBER:**

**DPD-6**

One Honey Creek Corporate Center  
125 South 84th Street,  
Suite 401  
Milwaukee, WI 53214-1470  
414 / 259 1500  
414 / 259 0037 fax  
[www.graef-usa.com](http://www.graef-usa.com)



**LEGEND**

▲	TRAVERSE POINT
○	1" IRON PIPE FOUND
●	1" IRON PIPE SET
⊙	REBAR FOUND
⊠	CONCRETE MONUMENT W/BRASS CAP
⊞	STREET LIGHTING JUNCTION BOX
⊞	LIGHT POLE
⊞	POWER POLE
○	MANHOLE
○	TELEPHONE MANHOLE
⊞	STORM INLET
⊞	WATER VALVE
⊞	WATER SERVICE VALVE
⊞	FIRE HYDRANT
⊞	GAS SERVICE VALVE
⊞	GAS VALVE
⊞	SIGN
⊞	DECIDUOUS TREE
⊞	TREE LINE
---	BURIED STREET LIGHTING LINE
---	BURIED WATER SERVICE
---	BURIED WATER MAIN
---	BURIED SANITARY LATERAL
---	BURIED SANITARY SEWER
---	BURIED STORM SEWER

CONSULTANTS:

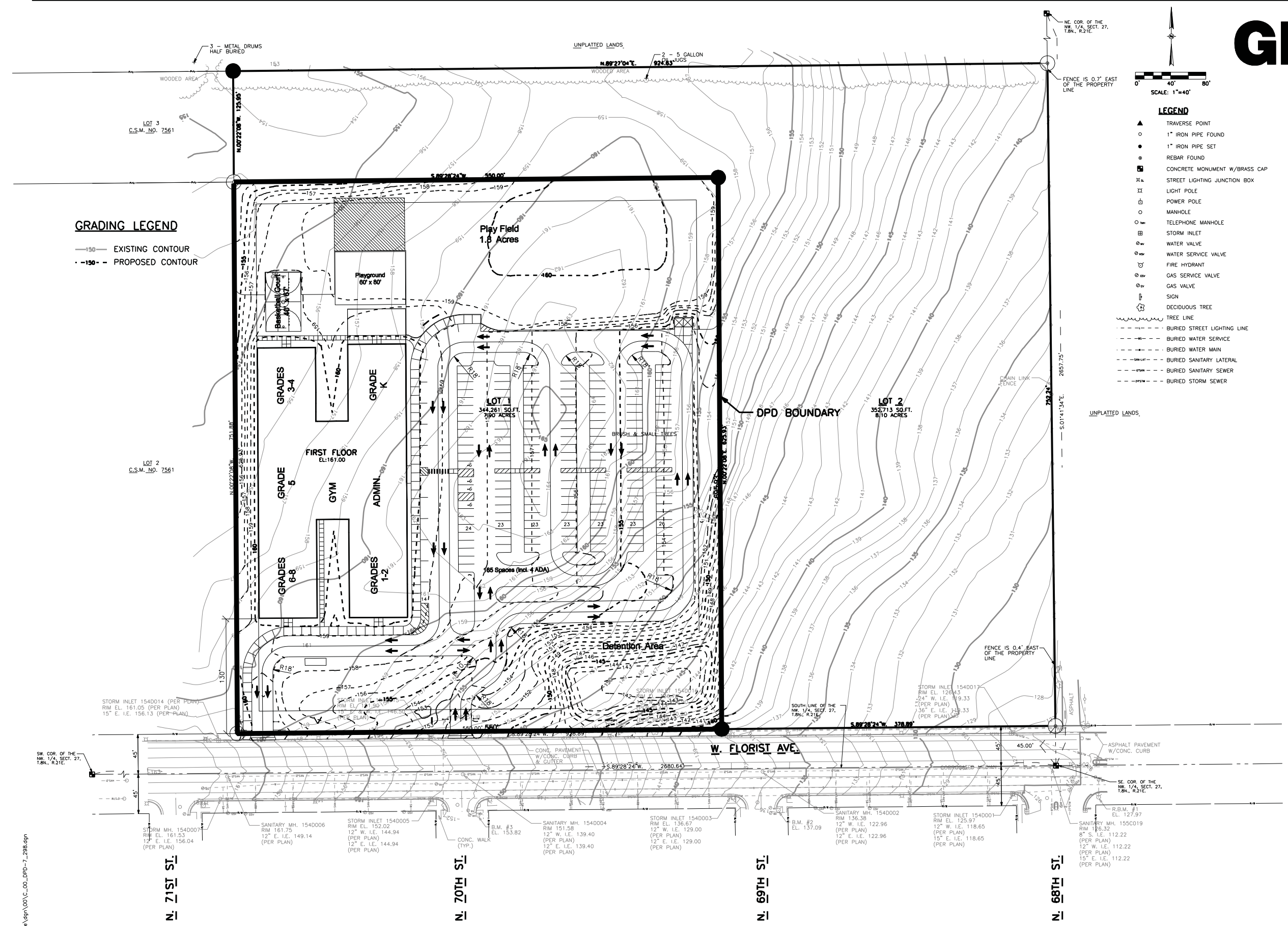
PROJECT TITLE:

NATIONAL HERITAGE ACADEMIES  
6900 WEST FLORIST AVENUE  
MILWAUKEE, WISCONSIN

ISSUE:

**GRADING LEGEND**

- 150— EXISTING CONTOUR
- -150- - PROPOSED CONTOUR



**GENERAL NOTES**

1. The underground utilities shown have been located from field survey information and existing drawings. The surveyor makes no guarantee that the underground utilities shown comprise all such utilities in the area, either in service or abandoned. The surveyor further does not warrant that the underground utilities shown are in the exact location indicated although he does certify that they are located as accurately as possible from information available. The surveyor has not physically located the underground utilities.

**BENCH MARKS**

- R.B.M. #1 - Found chiseled cross on top of nozzle of fire hydrant at the southeast corner of W. Florist Ave. and N. 68th St. - Elevation = 127.97.
- B.M. #2 - Northwest bolt on top flange of fire hydrant at the southeast corner of W. Florist Ave. and N. 69th St. - Elevation = 137.09.
- B.M. #3 - Northwest bolt on top flange of fire hydrant at the southeast corner of W. Florist Ave. and N. 70th St. - Elevation = 153.82.

**REFERENCE BEARING**

All bearings are referenced to the South line of the Northwest 1/4 of Section 27, T.8N., R.21E, which bears S.89°28'24"W. and is referenced to Grid North of the Wisconsin State Plane Coordinate System, South Zone, FEB. 2008 DATUM

12/22/2010 3:42:12 PM L:\Jobs\2010\20100298\CAD\Site\grn\001\C\_00\_DPD-7\_298.dgn

CITY OF MILWAUKEE  
FILE NO. 100874

**PROJECT INFORMATION:**

PROJECT NUMBER: 20100298.00  
DATE: 10/27/10  
DRAWN BY: FKO  
CHECKED BY: MJR  
APPROVED BY: JTM  
SCALE: 1" = 40'

**SHEET TITLE:**

PROPOSED GRADING  
PLAN

SHEET NUMBER:

One Honey Creek Corporate Center  
 125 South 84th Street,  
 Suite 401  
 Milwaukee, WI 53214-1470  
 414 / 259 1500  
 414 / 259 0037 fax  
 www.graef-usa.com

CONSULTANTS:

PROJECT TITLE:

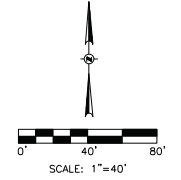
NATIONAL HERITAGE ACADEMIES  
 6900 WEST FLORIST AVENUE  
 MILWAUKEE, WISCONSIN

ISSUE:

▲ JANUARY 4, 2011  
 RENDERED LANDSCAPE PLAN



SYMBOL	BOTANICAL NAME	COMMON NAME	SIZE	SPACING	MATURE SIZE	QUANTITY
<b>SHADE TREES</b>						
AMM	Acer myriophyllum 'Morton'	State Street Myriophyllum Maple	2' 5" DB	as shown	40h x 30w	4
ASG	Acer saccharum 'Green Mountain'	Green Mountain Sugar Maple	2' 5" DB	as shown	45h x 35w	4
AFS	Acer x freemanii 'Spartan'	Spartan Glen Maple	2' 5" DB	as shown	60h x 40w	10
COP	Celtis occidentalis 'Prairie Pride'	Prairie Pride Hackberry	2' 5" DB	as shown	60h x 50w	7
GTK	Gleditsia triacanthos inermis 'Skyline'	Skyline Honeylocust	2' 5" DB	as shown	45h x 35w	11
QBC	Quercus bicolor	Swamp White Oak	2' 5" DB	as shown	50h x 50w	3
QMC	Quercus macrocarpa	Bur Oak	2' 5" DB	as shown	60h x 60w	1
TTS	Tilia tomentosa 'Sterling'	Sterling Silver Linden	2' 5" DB	as shown	40-50h x 20-30w	2
ULT	Ulmus x 'Triumph'	Triumph Elm	2' 5" DB	as shown	55h x 45w	5
<b>DECIDUOUS SHRUBS</b>						
CSA	Cornus stolonifera 'Arctic Fire'	Arctic Fire Dogwood	24" cont.	4'	3'-4h x 3'-4w	38
DVL	Dianella ionacra	Deerf Bush honeysuckle	18" cont.	4'	4h x 4w	108
RRB	Rosa rugosa Belle Polesine'	Belle Polesine Rugosa Rose	24" cont.	5'	4'-6h x 4'-0w	14
SCA	Sambucus canadensis	American Elderberry	36" cont.	5'	10h x 10w	3
VLM	Viburnum lantana 'Mohican'	Mohican Viburnum	36" cont.	7'	8'-10h x 10'-12w	10
<b>EVERGREEN SHRUBS</b>						
JCK	Juniperus chinensis 'Killey's Compact'	Killey's Compact Pfitzer Juniper	24" cont.	4'	2'-3h x 5' w	76



CITY OF MILWAUKEE  
 FILE NO. 100874

PROJECT INFORMATION:

PROJECT NUMBER: 20100298.00  
 DATE: 10/27/10  
 DRAWN BY: ERS  
 CHECKED BY: MJR  
 APPROVED BY: JTM  
 SCALE: 1" = 40'

SHEET TITLE:

PROPOSED LANDSCAPE PLAN

SHEET NUMBER:

## DPD-8



One Honey Creek Corporate Center  
125 South 84th Street,  
Suite 401  
Milwaukee, WI 53214-1470  
414 / 259 1500  
414 / 259 0037 fax  
www.graef-usa.com

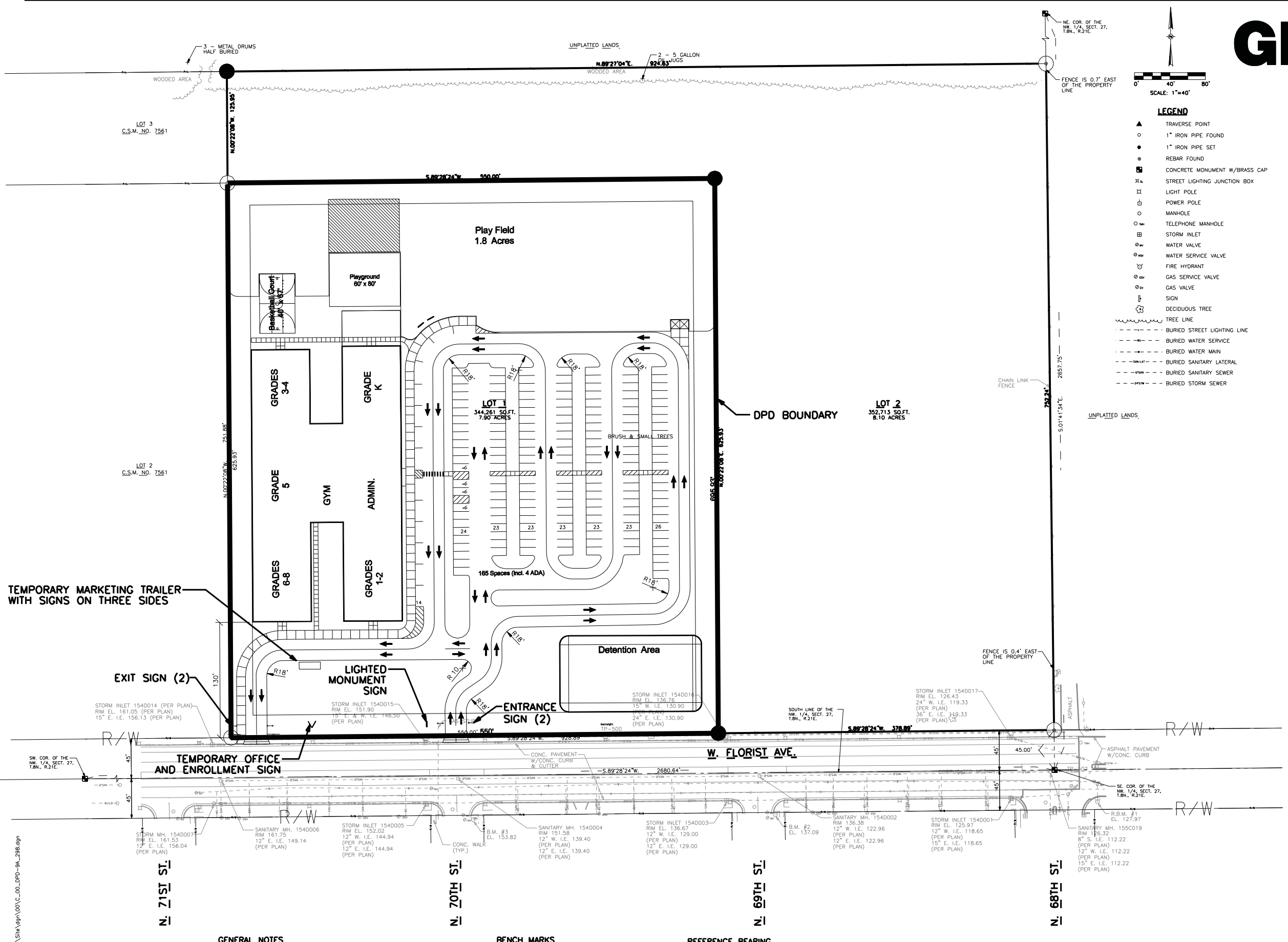
CONSULTANTS:

PROJECT TITLE:

NATIONAL HERITAGE ACADEMIES  
6900 WEST FLORIST AVENUE  
MILWAUKEE, WISCONSIN

ISSUE:

- SCALE: 1"=40'
- LEGEND**
- ▲ TRAVERSE POINT
  - 1" IRON PIPE FOUND
  - 1" IRON PIPE SET
  - ⊙ REBAR FOUND
  - ⊞ CONCRETE MONUMENT W/BRASS CAP
  - ⊞ STREET LIGHTING JUNCTION BOX
  - ⊞ LIGHT POLE
  - ⊞ POWER POLE
  - MANHOLE
  - TELEPHONE MANHOLE
  - ⊞ STORM INLET
  - ⊞ WATER VALVE
  - ⊞ WATER SERVICE VALVE
  - ⊞ FIRE HYDRANT
  - ⊞ GAS SERVICE VALVE
  - ⊞ GAS VALVE
  - ⊞ SIGN
  - ⊞ DECIDUOUS TREE
  - TREE LINE
  - BURIED STREET LIGHTING LINE
  - BURIED WATER SERVICE
  - BURIED WATER MAIN
  - BURIED SANITARY LATERAL
  - BURIED SANITARY SEWER
  - BURIED STORM SEWER



**GENERAL NOTES**

1. The underground utilities shown have been located from field survey information and existing drawings. The surveyor makes no guarantees that the underground utilities shown comprise all such utilities in the area, either in service or abandoned. The surveyor further does not warrant that the underground utilities shown are in the exact location indicated although he does certify that they are located as accurately as possible from information available. The surveyor has not physically located the underground utilities.

**BENCH MARKS**

R.B.M. #1 - Found chiseled cross on top of nozzle of fire hydrant at the southeast corner of W. Florist Ave. and N. 68th St. - Elevation = 127.97.  
B.M. #2 - Northwest bolt on top flange of fire hydrant at the southeast corner of W. Florist Ave. and N. 69th St. - Elevation = 137.09.  
B.M. #3 - Northwest bolt on top flange of fire hydrant at the southeast corner of W. Florist Ave. and N. 70th St. - Elevation = 153.82.

**REFERENCE BEARING**

All bearings are referenced to the South line of the Northwest 1/4 of Section 27, T.8N., R.21E., which bears S.89°28'24"W. and is referenced to Grid North of the Wisconsin State Plane Coordinate System, South Zone, FEB. 2008 DATUM

TEMPORARY MARKETING TRAILER WITH SIGNS ON THREE SIDES

EXIT SIGN (2)

TEMPORARY OFFICE AND ENROLLMENT SIGN

LIGHTED MONUMENT SIGN

ENTRANCE SIGN (2)

Detention Area

One Honey Creek Corporate Center  
125 South 84th Street,  
Suite 401  
Milwaukee, WI 53214-1470  
414 / 259 1500  
414 / 259 0037 fax  
[www.graef-usa.com](http://www.graef-usa.com)

CONSULTANTS:

PROJECT TITLE:

NATIONAL HERITAGE ACADEMIES  
6900 WEST FLORIST AVENUE  
MILWAUKEE, WISCONSIN

ISSUE:

### National Heritage Academies

**Construction:**

- Constructed using 2 part UV-Resin with 2 part expanded urethane and a 2 part frame on frame.
- Sign is visible construction.
- Shade Panel has backing mounted over.
- Planted with Matthews Acrylic Polyurethane.

**Graphics:**

- Top face is to have digital print applied.
- Media face is to have white vinyl applied as an aluminum panel.
- Bottom face is to have linen of 1" copy with knickerbocker backing mounted cover.

**Electrical:**

- Sign is to be internally illuminated using 11.1 fluorescent bulbs - 120 VAC.
- UL Listed.
- Installation.
- Sign installed using 1" x 3" steel.

**Detail Section Modulus**

Mat	Area	Depth	Modulus
1.0	1.00	0.125	1.00
2.0	2.00	0.125	2.00
3.0	3.00	0.125	3.00
4.0	4.00	0.125	4.00
5.0	5.00	0.125	5.00
6.0	6.00	0.125	6.00
7.0	7.00	0.125	7.00
8.0	8.00	0.125	8.00
9.0	9.00	0.125	9.00
10.0	10.00	0.125	10.00

**Detail Extrusion**

30 sqft.

Signature: \_\_\_\_\_ Date: \_\_\_\_\_

**Midwest Sign COMPANY**

1220 Lincoln Park Ave. Ste. 200  
Milwaukee, WI 53233  
Phone: 414-259-1500  
Fax: 414-259-0037

11/11/09

Signature: \_\_\_\_\_ Date: \_\_\_\_\_

### National Heritage Academies

installed on the corner

45°

45°

Side A

Side B

installed on Job Site Trailer

86"

45°

45°

Signature: \_\_\_\_\_ Date: \_\_\_\_\_

### National Heritage Academies

① Fabricated 2" deep aluminum post and panel

② Painted using Matthews Acrylic Polyurethane

③ Direct Burse in 2" of concrete

22"

22"

Signature: \_\_\_\_\_ Date: \_\_\_\_\_

**Midwest Sign COMPANY**

1220 Lincoln Park Ave. Ste. 200  
Milwaukee, WI 53233  
Phone: 414-259-1500  
Fax: 414-259-0037

11/11/09

Signature: \_\_\_\_\_ Date: \_\_\_\_\_

### National Heritage Door Tags

Door tags to be 6040 aluminum extrusion on end of door patterns 6040 work must have acrylic polycarbonate. Door tags to have UV/VIB tape applied to the back side. Installation on hinge side of every door.

2.5"

1.25"

114

Signature: \_\_\_\_\_ Date: \_\_\_\_\_

**Midwest Sign COMPANY**

1220 Lincoln Park Ave. Ste. 200  
Milwaukee, WI 53233  
Phone: 414-259-1500  
Fax: 414-259-0037

11/11/09

Signature: \_\_\_\_\_ Date: \_\_\_\_\_

### National Heritage Academies

Qty 2 Signs

Side A

Side B

Plan View of Installation Configuration

Side B

Side A

Signature: \_\_\_\_\_ Date: \_\_\_\_\_

### National Heritage Academies

21.5"

15.75"

Signature: \_\_\_\_\_ Date: \_\_\_\_\_

### National Heritage Academies

22.5"

22"

Signature: \_\_\_\_\_ Date: \_\_\_\_\_

CITY OF MILWAUKEE  
FILE NO. 100874

PROJECT INFORMATION:

PROJECT NUMBER: 20100298.00  
DATE: 10/27/10  
DRAWN BY: FKO  
CHECKED BY: MJR  
APPROVED BY: JTM  
SCALE: NTS

SHEET TITLE:

PROPOSED SIGNAGE  
DETAILS

SHEET NUMBER:

One Honey Creek Corporate Center  
 125 South 84th Street,  
 Suite 401  
 Milwaukee, WI 53214-1470  
 414 / 259 1500  
 414 / 259 0037 fax  
 www.graef-usa.com



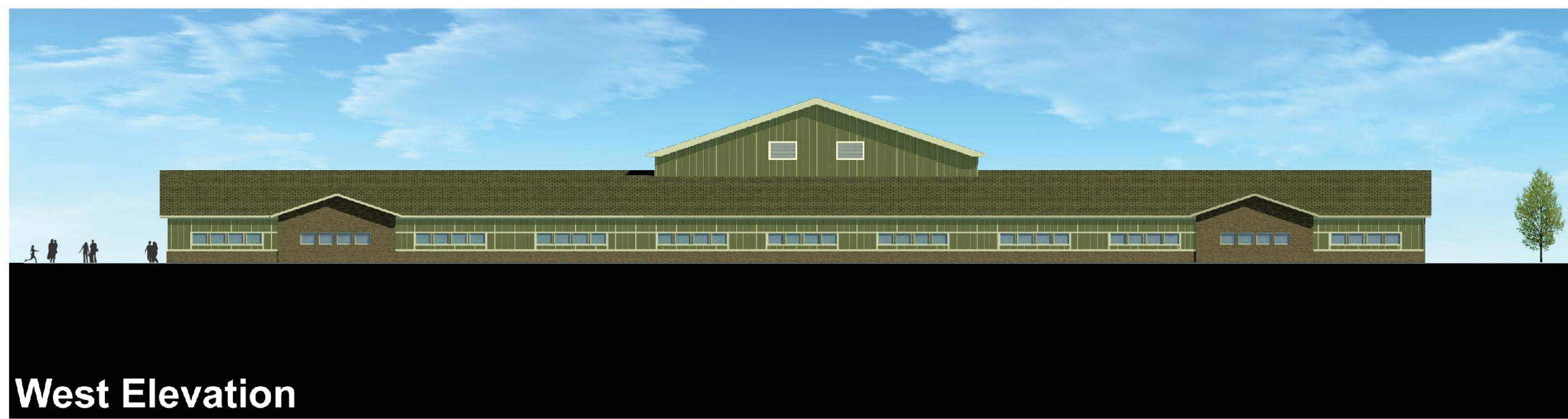
## North Elevation

CONSULTANTS:

PROJECT TITLE:

NATIONAL HERITAGE ACADEMIES  
 6900 WEST FLORIST AVENUE  
 MILWAUKEE, WISCONSIN

ISSUE:



## West Elevation

CITY OF MILWAUKEE  
 FILE NO. 100874

PROJECT INFORMATION:

PROJECT NUMBER: 20100298.00  
 DATE: 12/21/10  
 DRAWN BY: FKO  
 CHECKED BY: MJR  
 APPROVED BY: JTM  
 SCALE: NTS



December 21 2010 G100653

SHEET TITLE:

PROPOSED NORTH  
 AND WEST  
 BUILDING ELEVATIONS

SHEET NUMBER:



Milwaukee Scholars Charter School

One Honey Creek Corporate Center  
 125 South 84th Street,  
 Suite 401  
 Milwaukee, WI 53214-1470  
 414 / 259 1500  
 414 / 259 0037 fax  
 www.graef-usa.com



## East Elevation

CONSULTANTS:

PROJECT TITLE:

NATIONAL HERITAGE ACADEMIES  
 6900 WEST FLORIST AVENUE  
 MILWAUKEE, WISCONSIN

ISSUE:



## South Elevation West Florist Avenue

CITY OF MILWAUKEE  
 FILE NO. 100874

PROJECT INFORMATION:

PROJECT NUMBER: 20100298.00  
 DATE: 12/21/10  
 DRAWN BY: FKO  
 CHECKED BY: MJR  
 APPROVED BY: JTM  
 SCALE: NTS



December 21 2010 G100653

SHEET TITLE:

PROPOSED SOUTH  
 AND EAST  
 BUILDING ELEVATIONS

SHEET NUMBER:



Milwaukee Scholars Charter School

12/22/2010 3:44:27 PM L:\webs2010\20100298\CAD\Site\ dgn\001\C\_00\_DPD-10B\_298.dgn