

W. Clarke St. 89

VACATED

60 33 120 15 33 1 120 60 St.

30 30 39 30 38 37 36 35 34 33

= 37 TAX KEY NO. 326-9998-113

= 36

= 35

= 34

= 33 (CITY OF MILW.)

= 32 TAX KEY NO. 326-0356-100

= 31

= 30

= 29

= 28

= 27

= 26 TAX KEY NO. 326-0349-100

= 25 TAX KEY NO. 326-0348-000

= 24 TAX KEY NO. 326-0347-000

= 23

= 22 TAX KEY NO. 326-0346-100

30 21 120 15 30 20 30

30 120 60

60 N. 32nd

W. Wright St. (60' R.O.W.)

St.

(60' R.O.W.)

TAX KEY NO. 326-0354-100

TAX KEY NO. 326-0352-000

TAX KEY NO. 326-0351-000

N. 33rd

(MAP 1 OF 2)



PUBLIC ALLEY PROPOSED TO BE VACATED

EXHIBIT "A" FILE NO. 140733

INFRASTRUCTURE SERVICES DIVISION

MILWAUKEE, WISCONSIN

ASSIGNED TO: W.E. FUCHS

DRAWN BY: W.E.F.

PROJECT/GRANT NO.: WK52337359

APPROVED BY:

CH'K'D. BY: W.E. FUCHS

DATE: DEC. 9, 2014

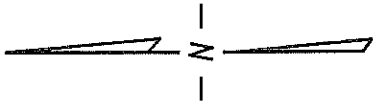
SCALE: 1" = 80'

Handwritten signature of W. Wright

Handwritten signature of W. Wright

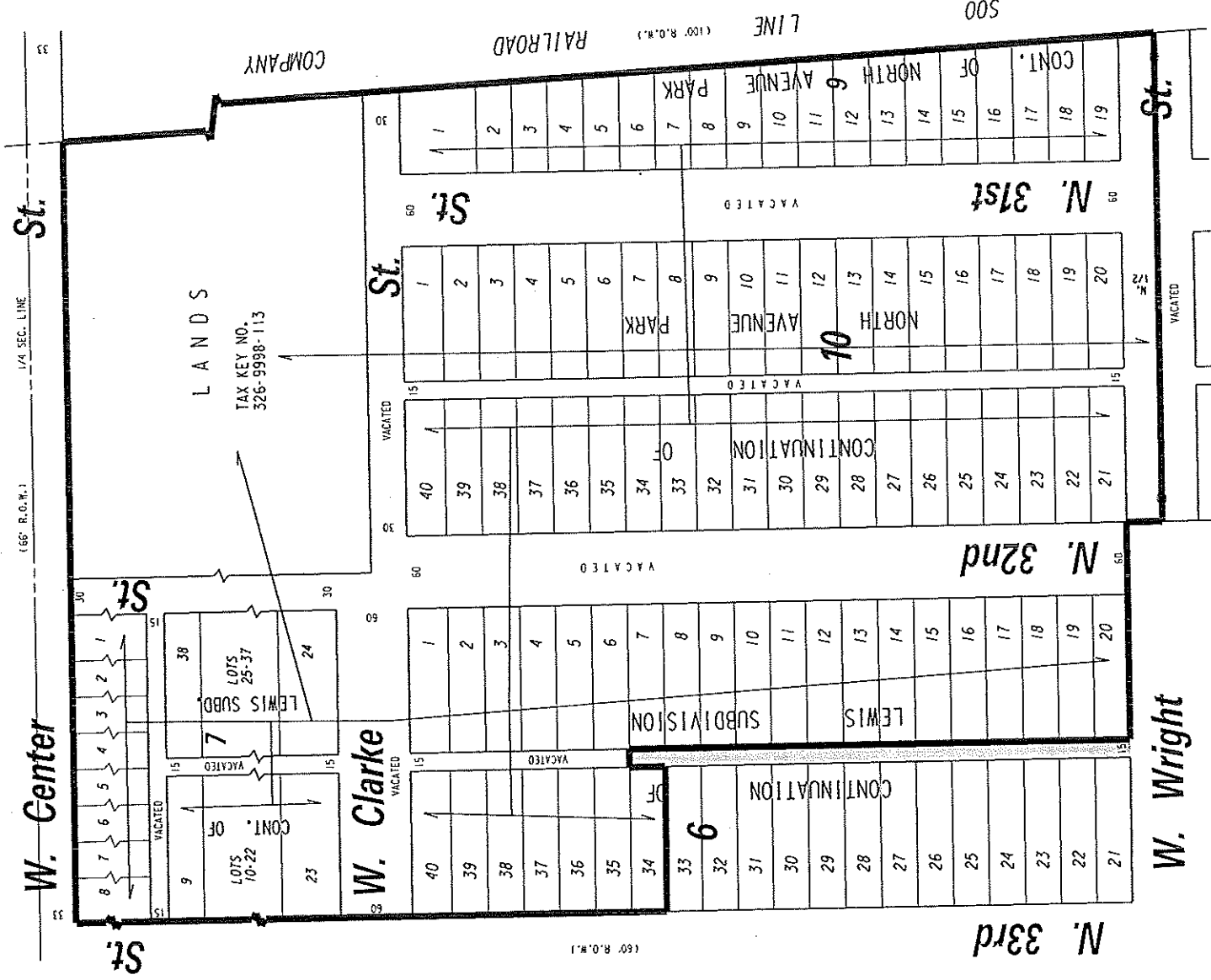
CENTRAL DRAFTING & RECORDS MANAGER

CITY ENGINEER



326

S.E. 1/4 SEC. 13, T.7N., R.21E.



(MAP 2 OF 2)

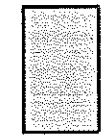


EXHIBIT "A"
 FILE NO. 140733
 INFRASTRUCTURE SERVICES DIVISION

MILWAUKEE, WISCONSIN
 CH'K'D. BY: W.E. FUCHS
 DATE: DEC. 9, 2014
 PROJECT/GRANT NO.: WK52337359
 SCALE: 1" = 100'
 ASSIGNED TO: W.E. FUCHS
 DRAWN BY: W.E.F.
 APPROVED BY: