

W. Walnut

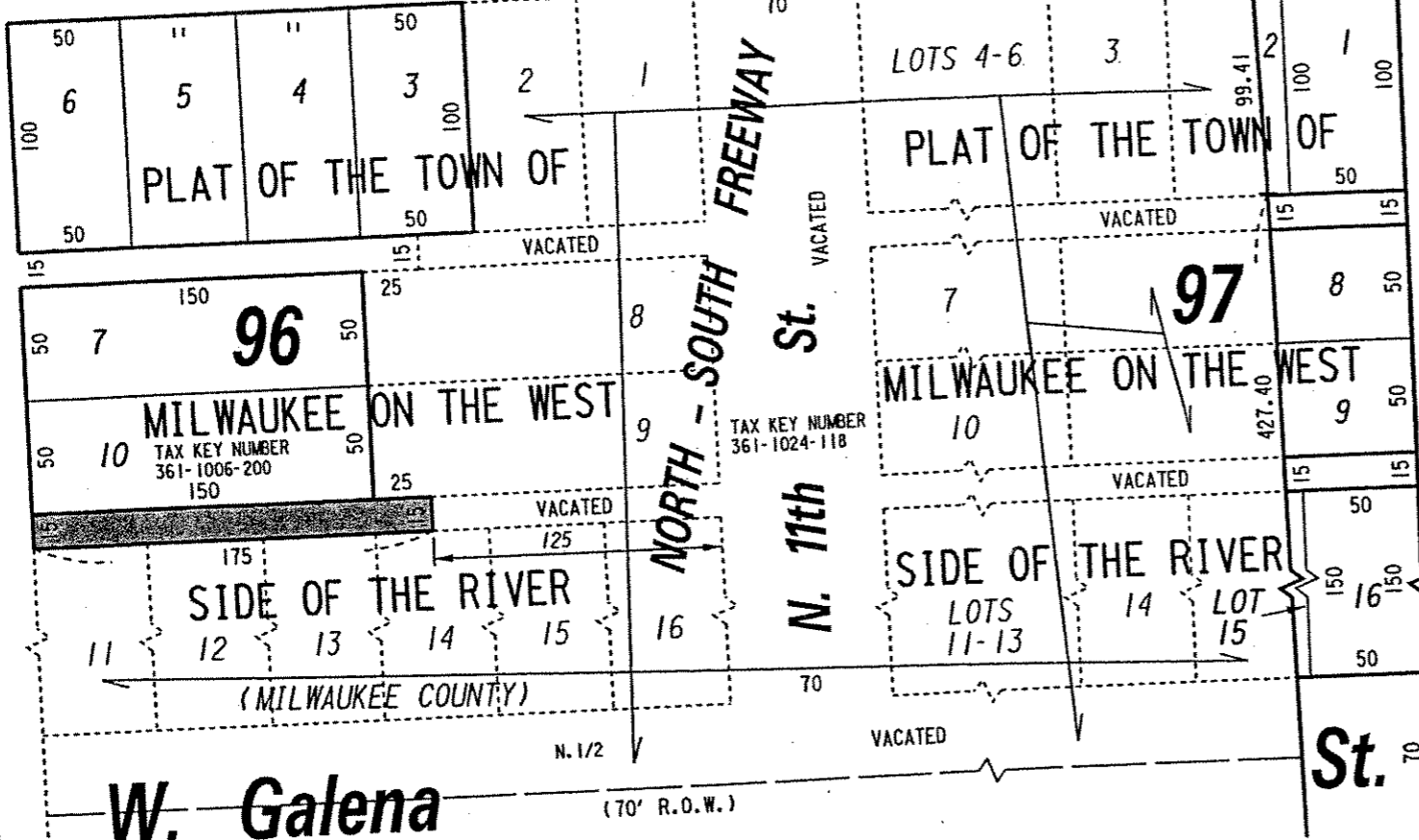
(120' R.O.W.)

St.

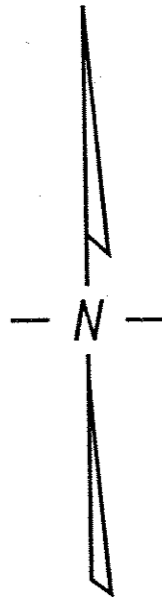
S.W. 1/4 SEC. 20, T.7N., R.22E.

362

St.



St.



(70' R.O.W.)

N. 10th

St.

EXHIBIT "A"

FILE NO. 050346

INFRASTRUCTURE SERVICES DIVISION

MILWAUKEE, WISCONSIN

ASSIGNED TO: P.A. VELLA

CH'K'D. BY: W.E. FUCHS

DRAWN BY: P.A.V.

DATE: OCT. 17, 2005

PROJECT/GRANT NO.: WK52337213

SCALE: 1" = 80'


APPROVED BY:

Marcia Lindholm

[Signature]

CENTRAL DRAFTING & RECORDS MANAGER

CITY ENGINEER

 PORTION OF PUBLIC
ALLEY PROPOSED
TO BE VACATED