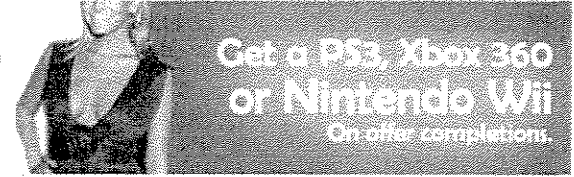


061521

LookSmart
FIND ARTICLES | 10,000,000 Articles
Where To Look For What You Need.™

Who is the Celebrity Pictured here?

a. Britney Spears b. Jessica Simpson c. Angelina Jolie



[FindArticles](#) > [Publications](#) > [Free](#) > [News & Society](#) > [Milwaukee Journal Sentinel, The](#) > [Feb 14, 2007](#) > [Article](#)

Ads by Google

FIND IN [Advanced Search](#)

Find Magazines by Topic

Financial trouble could ravage bus service; Dwindling funds endanger

[Milwaukee Journal Sentinel, The](#), [Feb 14, 2007](#) by [LARRY SANDLER](#)

Within three years, a looming financial crisis could force the Milwaukee County Transit System to slash more than one-third of its service, including all of its Freeway Flyers, a new report warns.

In addition to the nine Flyer routes, the bus system likely would need to drop all three UBUS routes serving the University of Wisconsin-Milwaukee and seven to 10 of its 31 local routes, along with service cuts on another 14 to 17 routes, says the report from the Southeastern Wisconsin Regional Planning Commission.

Depending on how many local routes are dropped or cut back, the bus system also might need to eliminate all late-night and Saturday service and cut Sunday service to daytime hours only, which could trigger similar cutbacks in van service for disabled riders, the report says.

Those grim predictions are helping to fuel the push by three county supervisors to establish a 0.25% sales tax and a 3% hotel tax to replace property tax support for the bus system. That proposal is to be discussed today by the County Board's Transportation, Public Works and Transit Committee, although no immediate vote is expected.

ADVERTISEMENT

Urgent Sto Alert

Aggressive Inve
Enjoy Huge Pro
From Our Hott
Picks!

HotStockJournal.com