

100751

MILWAUKEE POLICE DEPARTMENT SAFETY PLAN UPDATE ON OCCUPATIONAL INJURIES



Public Safety Committee – November 11, 2010

REPORT CONTENT

- 2009 Injury Data
- 2009 – 2010 Primary Injury Data Comparisons
- 2010 – 2011 Safety Goals

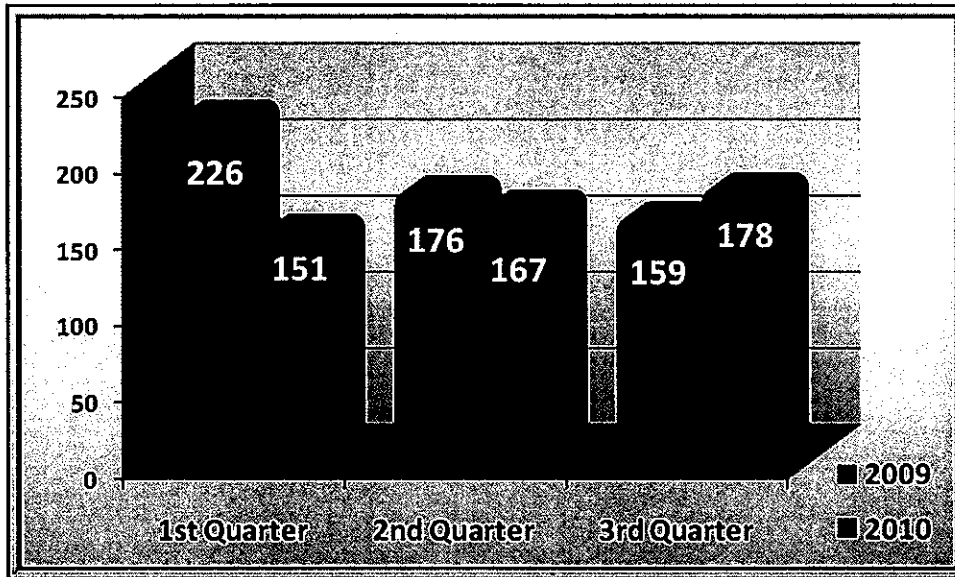
2009 – 775 Claims

2009 – 244 OSHA Recordable Claims

- 10% reduction in claims
- 3% reduction in recordable cases
- 8% reduction in injury hours
- 7% reduction in injury pay
- 68% reduction in injuries to recruit officers from 2008

- 74% of all claims were patrol
- 45% of claims involved foot pursuits and controlling/arresting subjects accounted
Compared to the number of arrests per year, foot pursuit and controlling/arresting subject injuries occur in fewer than 1% of arrests.
- 10% of claims involved investigation activities
- 4% of claims involved booking prisoners
- 7% of claims involved vehicle accidents

2009 – 2010 PRIMARY INJURY DATA COMPARISONS

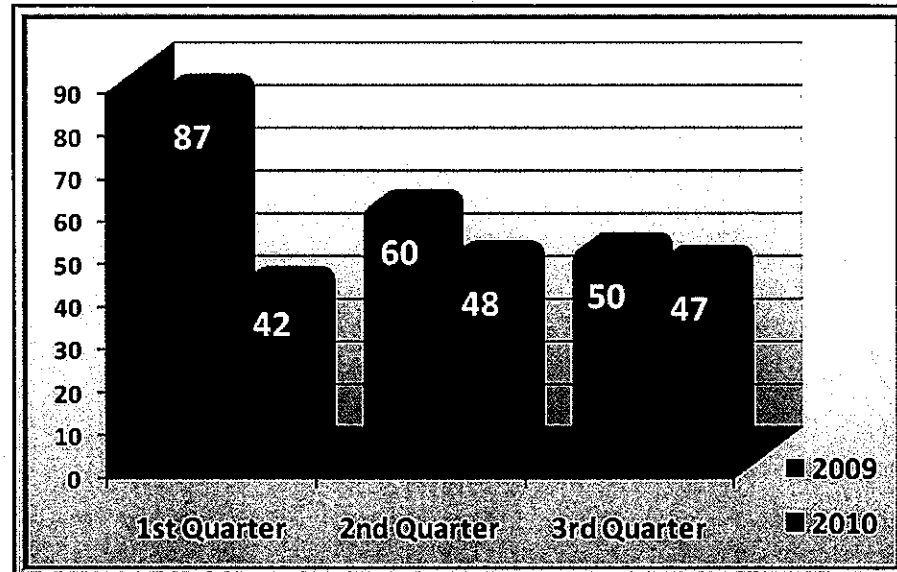


INJURY CLAIMS

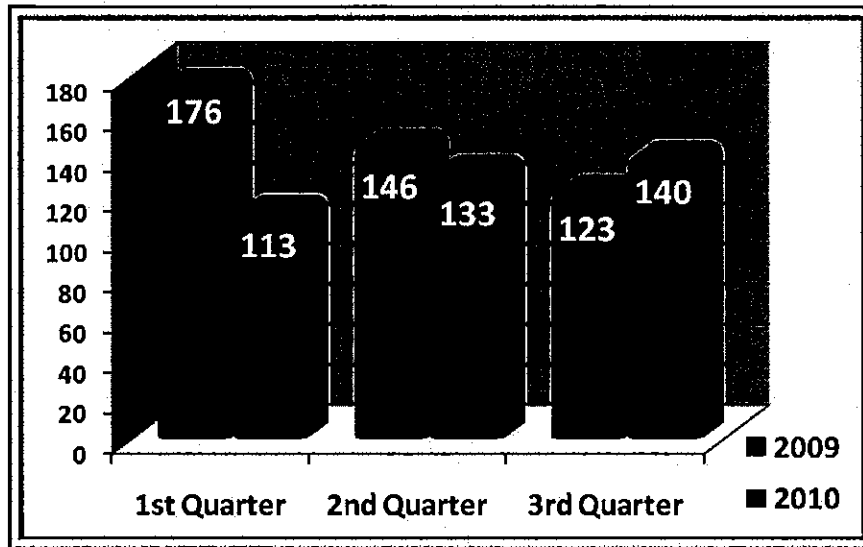
2009 YTD – 561 Claims
2010 YTD – 496 Claims
12% Reduction

OSHA RECORDABLE CLAIMS

2009 YTD – 197 Recordable Claims
2010 YTD – 137 Recordable Claims
30% Reduction



2009 – 2010 PRIMARY INJURY DATA COMPARISONS



TITLE/RANK – Police Officer

2009 YTD – 445 Claims

2010 YTD – 386 Claims

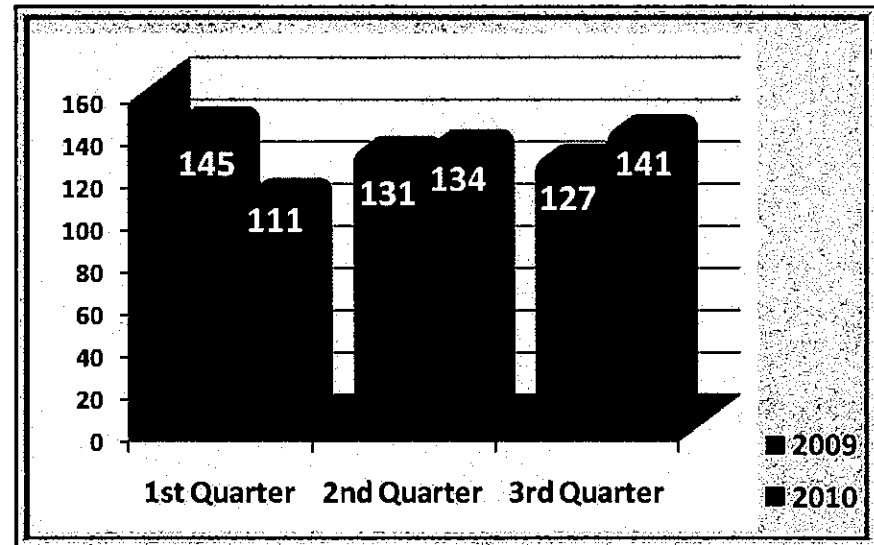
13% Reduction

TYPE OF DUTY – Field Duty - Patrol

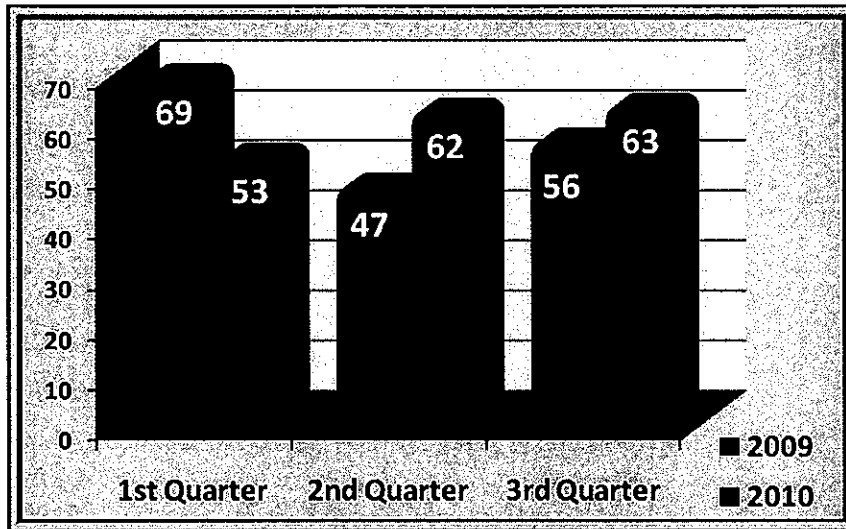
2009 YTD – 403 Claims

2010 YTD – 369 Claims

8% Reduction



2009 – 2010 PRIMARY INJURY DATA COMPARISONS



ACTIVITY WHEN INJURED – Controlling / Arresting Subject

2009 YTD – 172 Claims

2010 YTD – 178 Claims

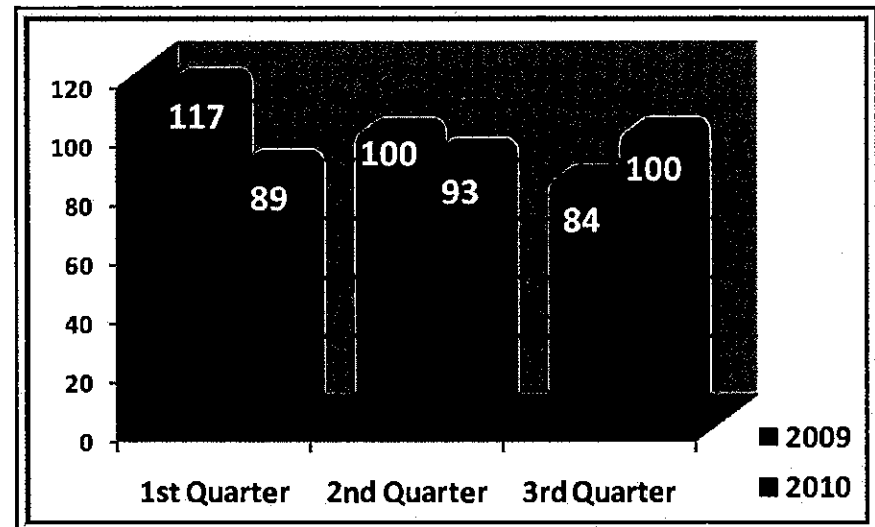
3% Increase

PRIMARY INJURY – Pains / Strains / Sprains

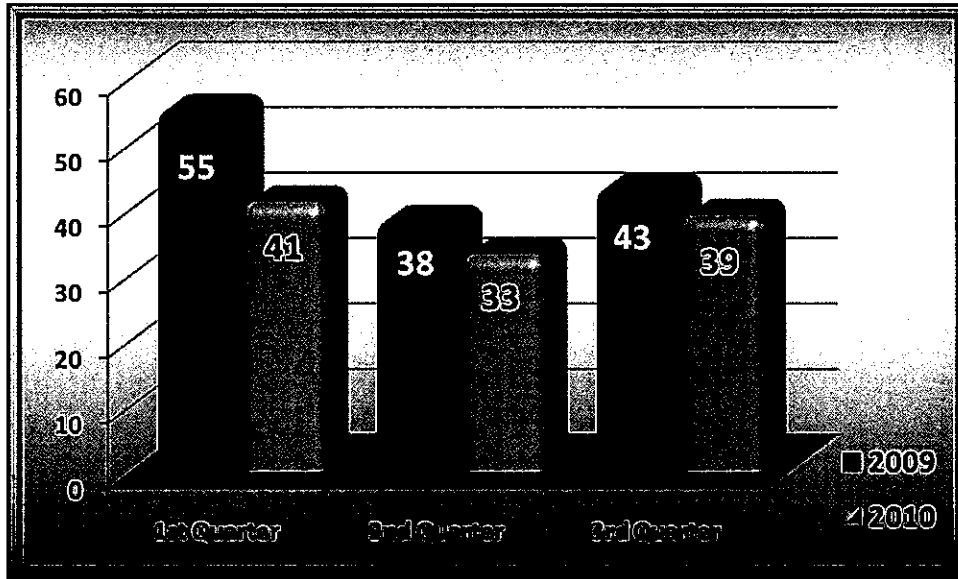
2009 YTD – 301 Claims

2010 YTD – 282 Claims

6% Reduction



2009 – 2010 PRIMARY INJURY DATA COMPARISONS

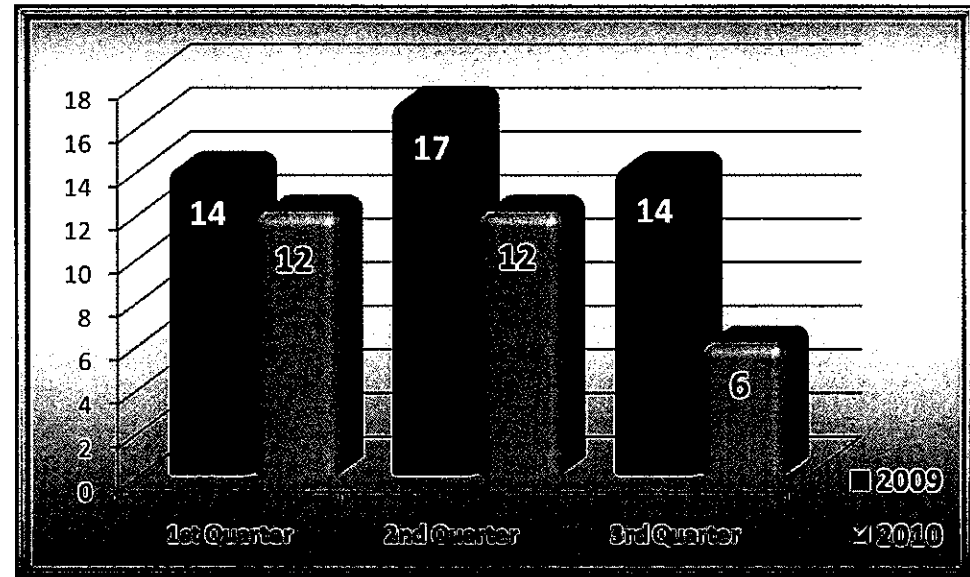


SQUAD ACCIDENTS

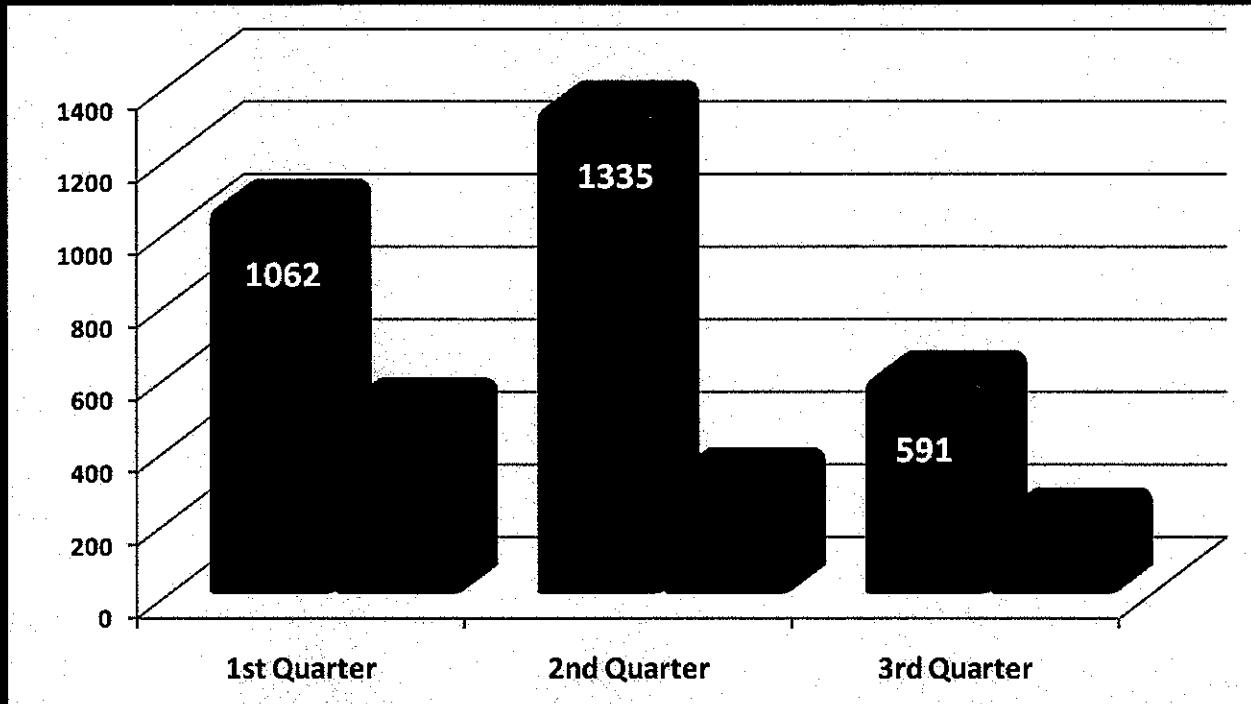
2009 YTD – 136 Incidents
2010 YTD – 113 Incidents
17% Reduction in squad accidents

SQUAD ACCIDENTS RESULTING IN INJURY

2009 YTD – 45 Injuries
2010 YTD – 30 Injuries
33% Reduction in accidents
involving injury



LOST WORKDAYS



2009 YTD – 2,988 Lost Workdays

2010 YTD – 1,051 Lost Workdays

64% Reduction

2009 YTD – 18 Incidents of 60 or More Lost Workdays

2010 YTD – 1 Incident of 60 or More Lost Workdays

94% Reduction

MPD INJURY WAGES

2009 YTD - \$593,054

2010 YTD - \$517,815

13% Reduction

2010 – 2011 MPD SAFETY GOALS

- Provide specialized training for Command Staff and Bureau Supervisors on the use of the MPD Safety Plan, the *PE-27A Performance Evaluation Report – Management/Executive Level*, *PM-12E Injury Classification Form*, *PDD-63E Report of Hazardous Workplace Conditions Form*, and related SOP's to ensure compliance of mandatory requirements by members.
- Provide specialized training for all members on vehicle operations, ergonomics and communicable diseases to address 2009 injury claims data.
- Monitor the collection of vehicle accidents and injuries.
- Schedule Quarterly Injury Review Committee Meetings to review all data collected and determine which areas require continuing education and training.
- Provide specialized accident investigation training to supervisors responsible for the completion of injury claims.