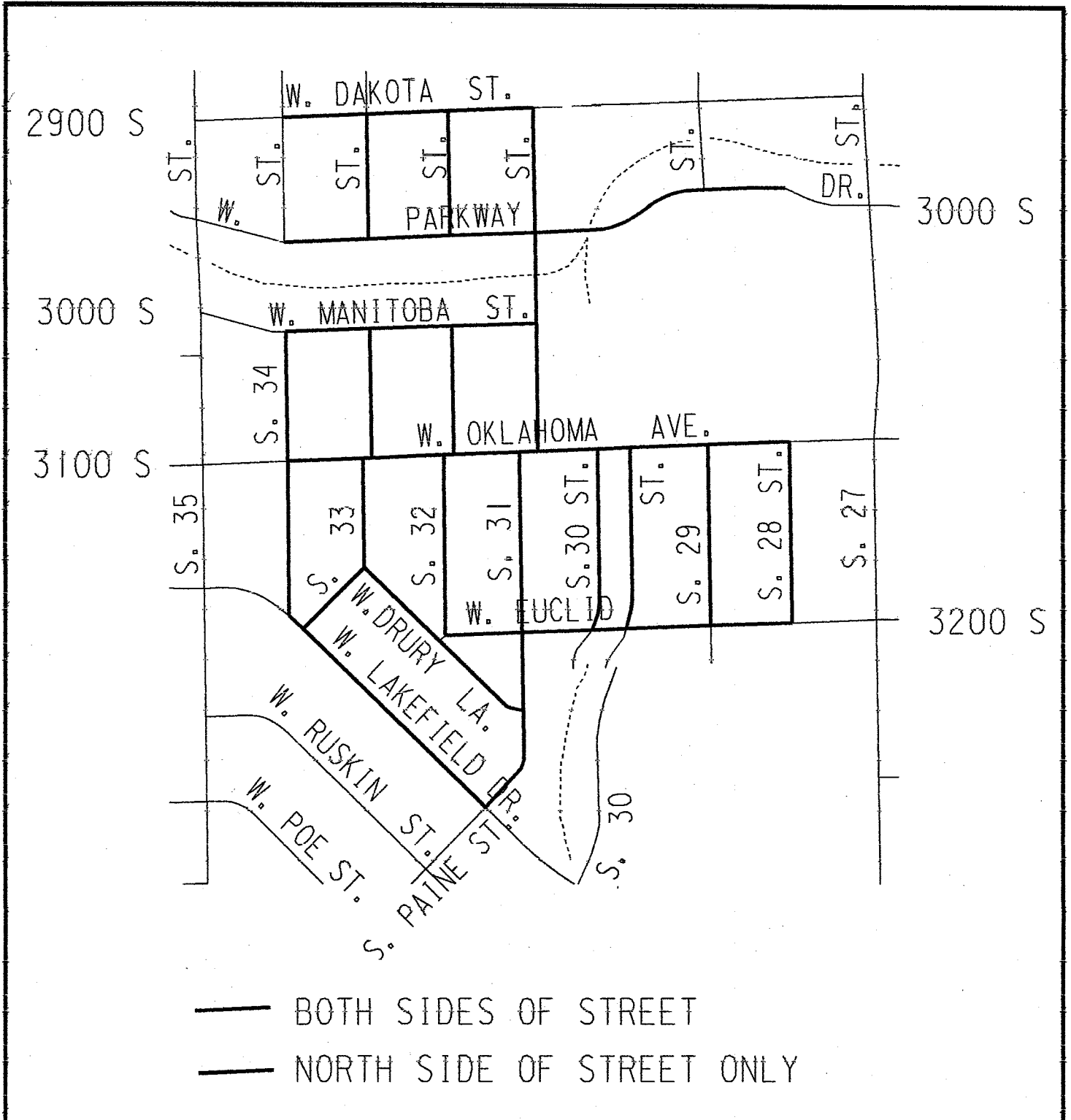
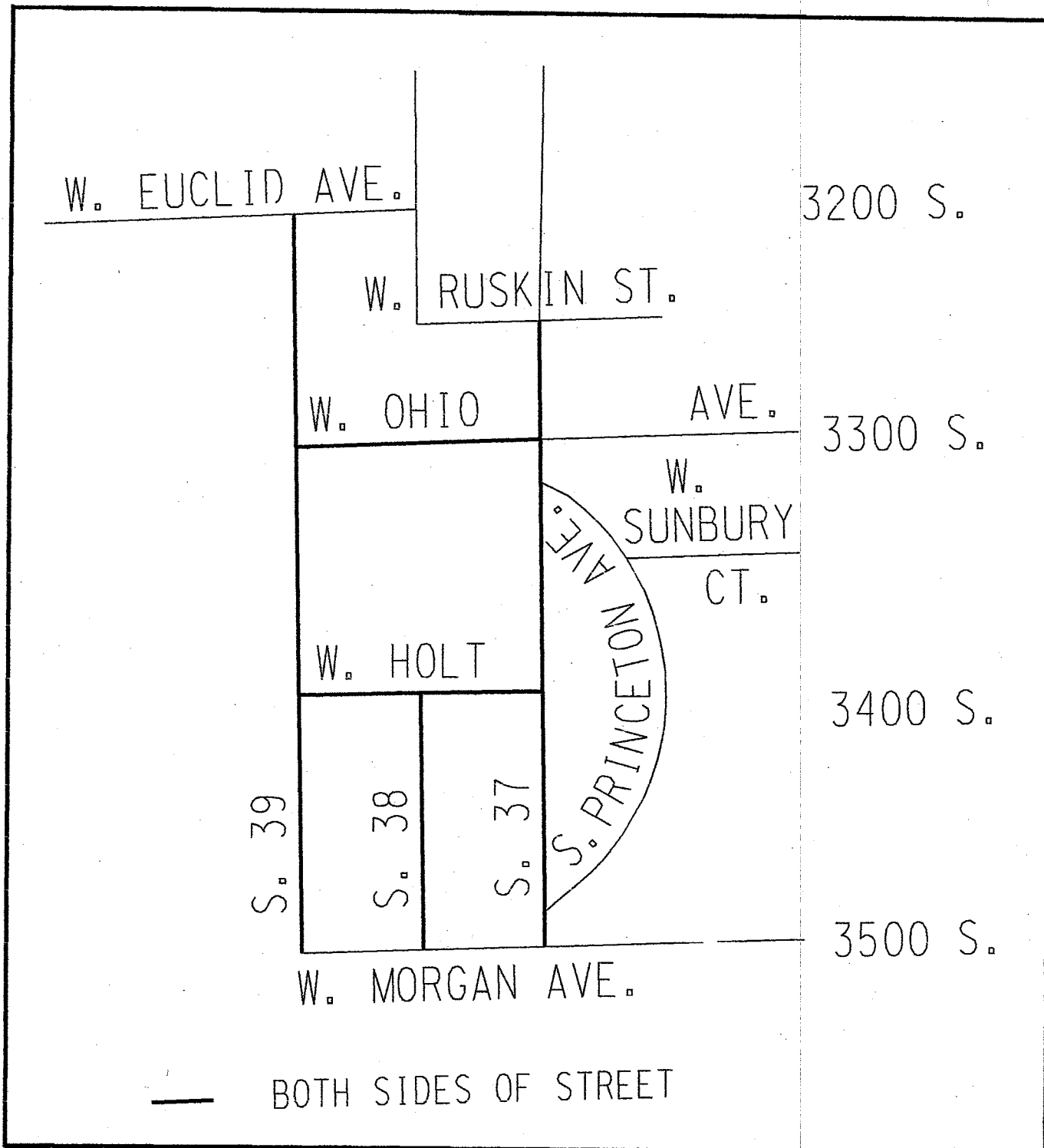


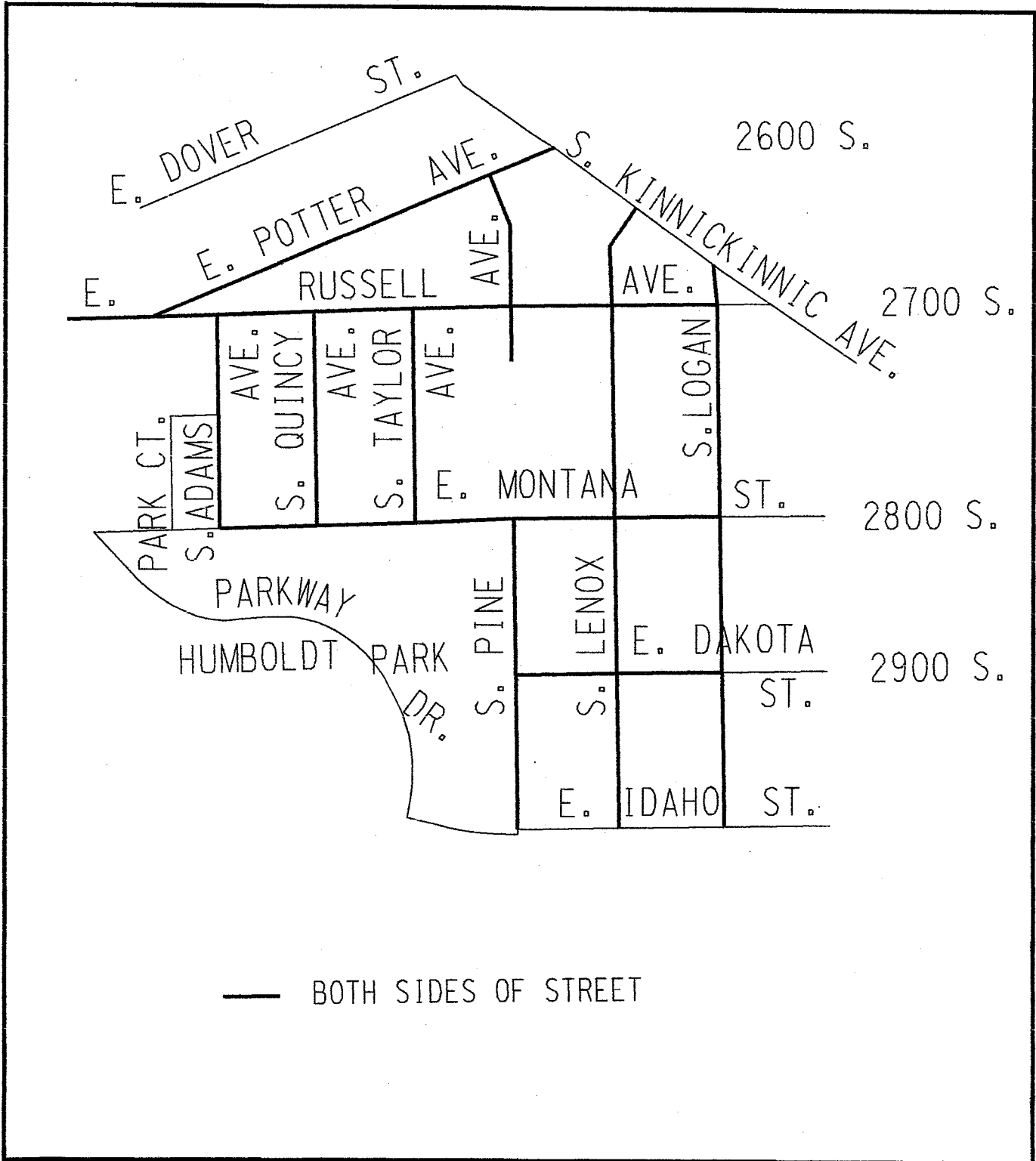
# ST. LUKE'S HOSPITAL COMMUTER PARKING IMPACTED AREA



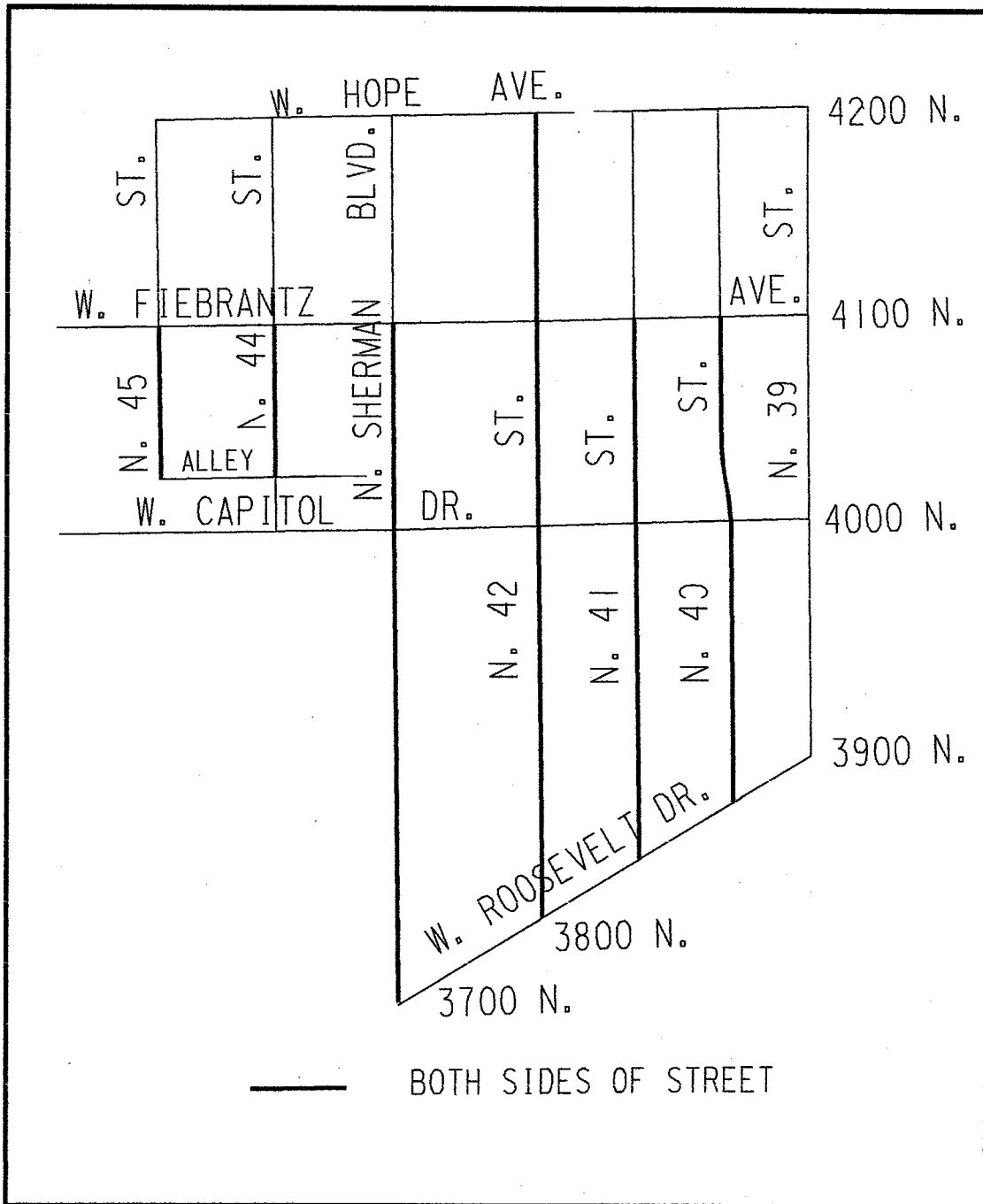
# ALVERNO COLLEGE COMMUTER PARKING IMPACTED AREA



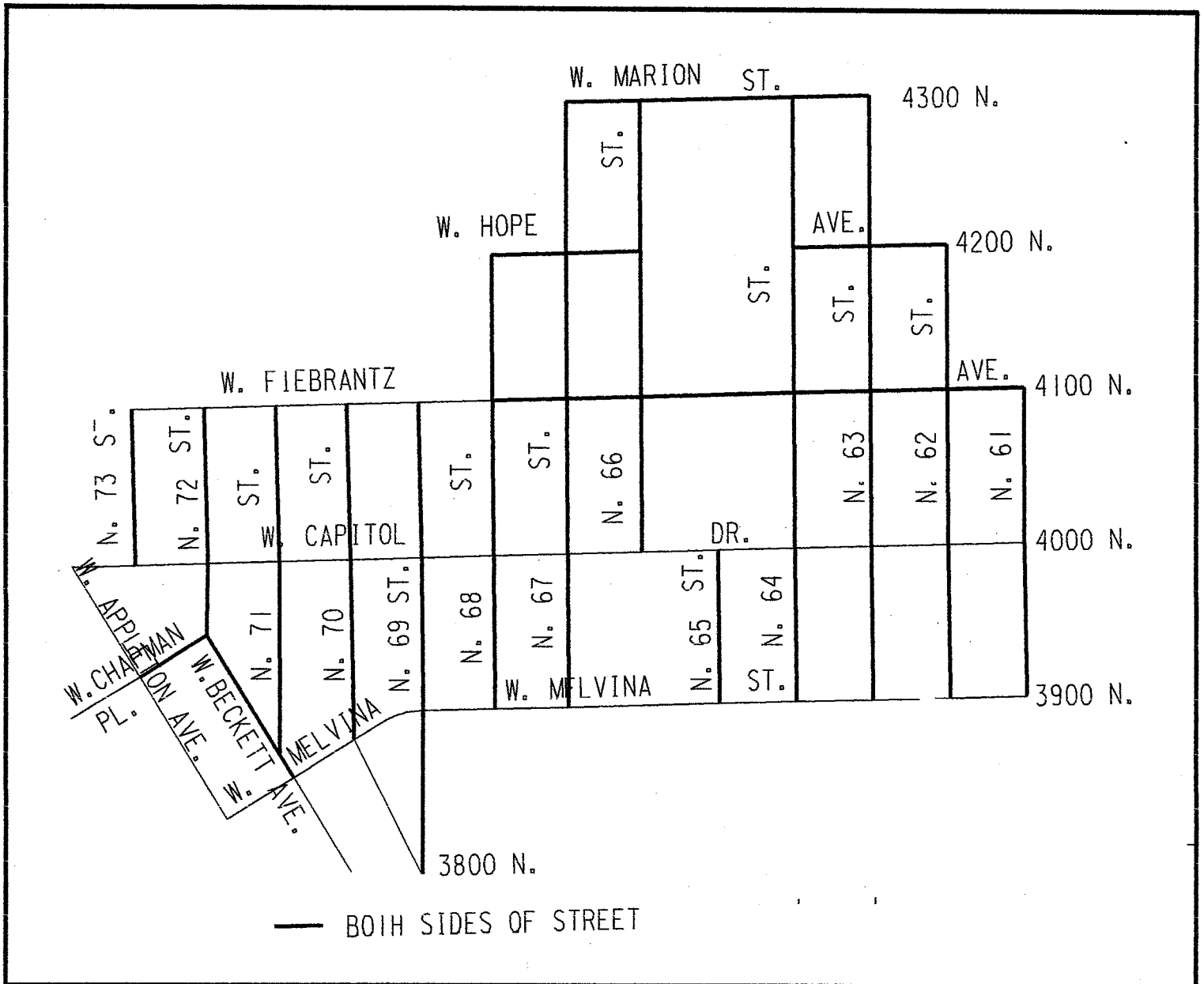
# BAY VIEW HIGH SCHOOL COMMUTER PARKING IMPACTED AEA



# W. CAPITOL DR. AND N. SHERMAN BLVD. BUSINESS AREA COMMUTER PARKING IMPACTED AREA



# JOHN MARSHALL HIGH SCHOOL - W. CAPITOL DR. BUSINESS AREA COMMUTER PARKING IMPACTED AREA

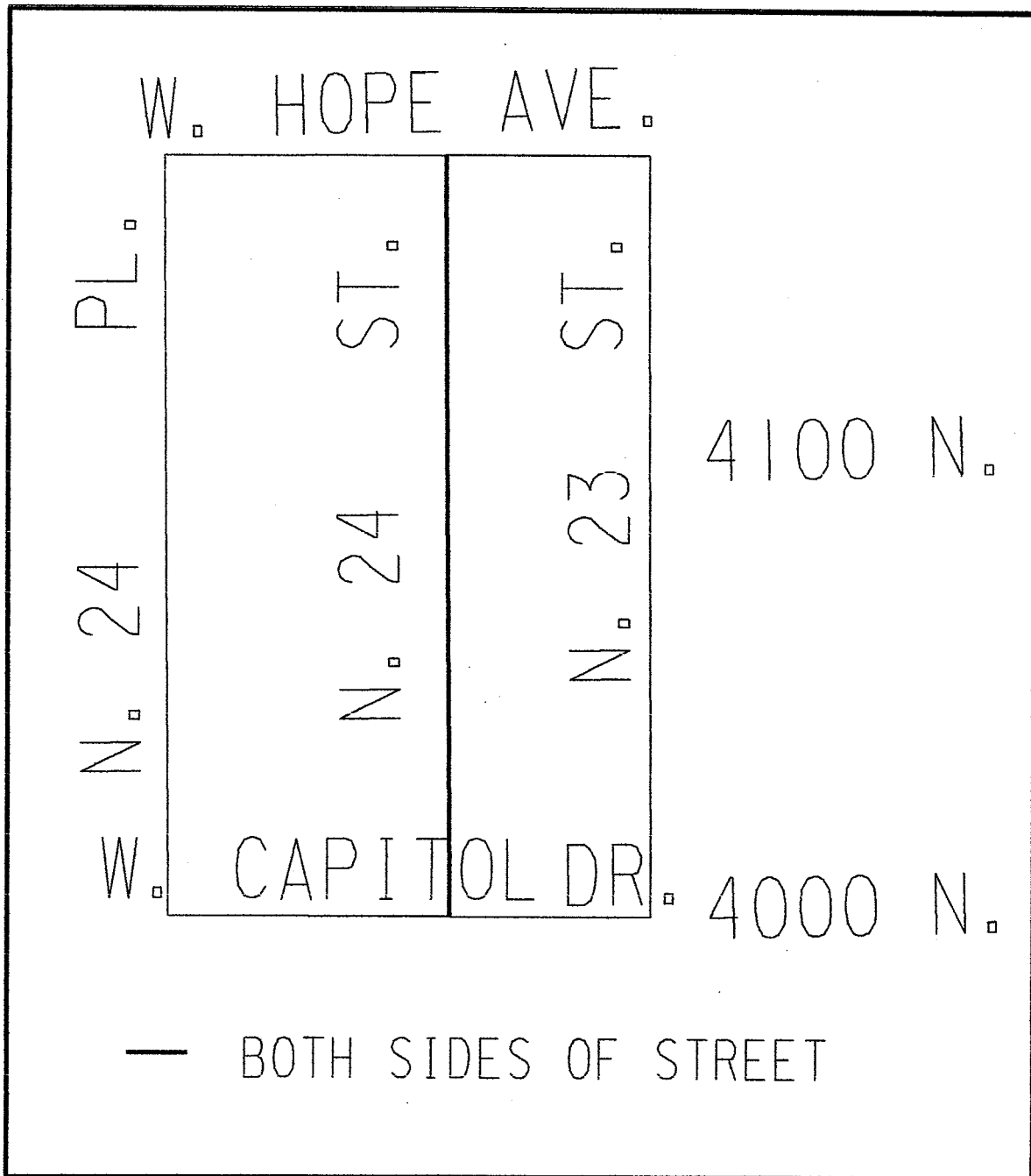


# CUTLER HAMMER

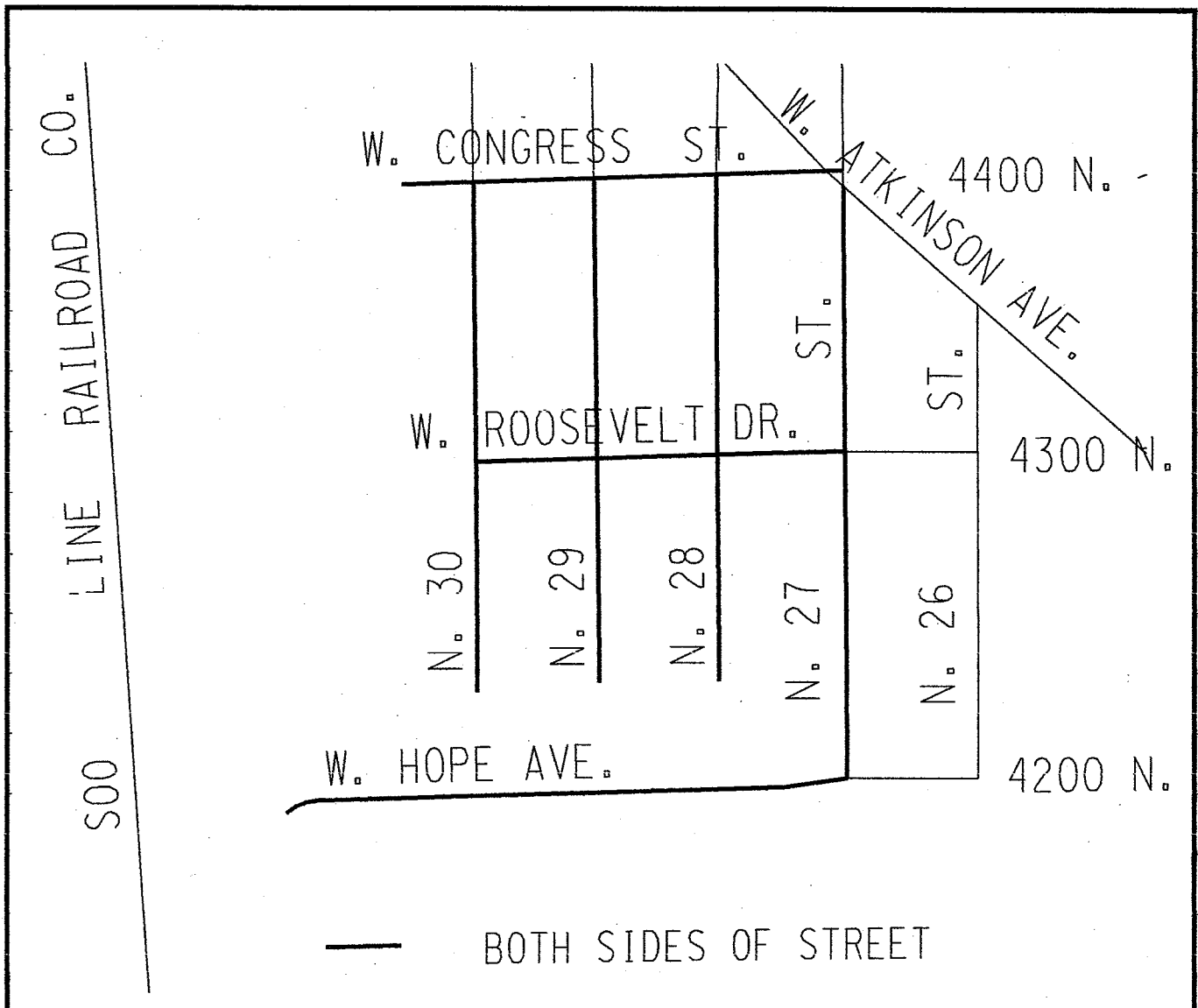
N. 24TH ST.

COMMUTER PARKING

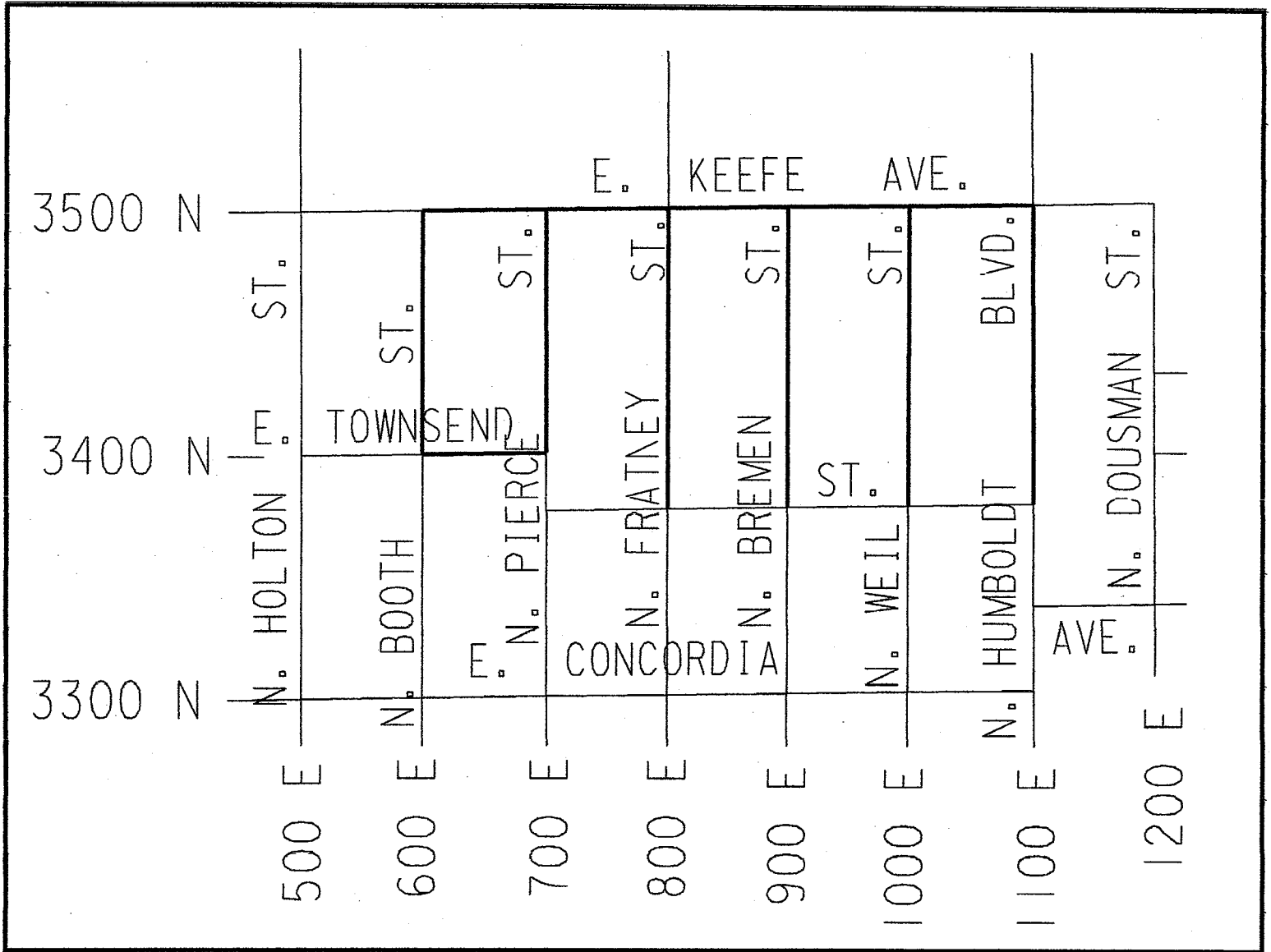
IMPACTED AREA



# CUTLER HAMMER N. 27TH ST. AND W. CONGRESS ST. COMMUTER PARKING IMPACTED AREA



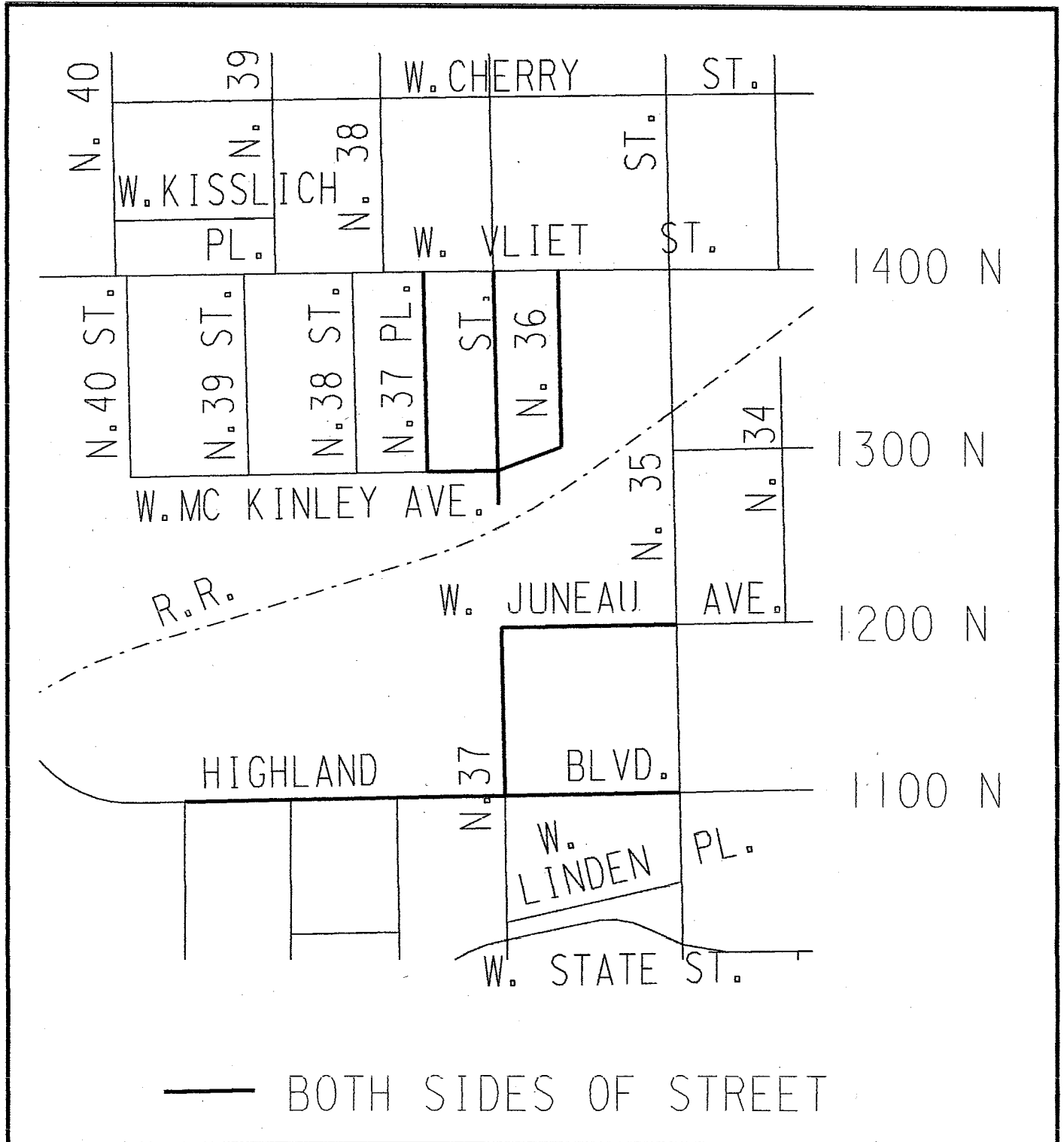
# GLOBE UNION COMMUTER PARKING IMPACTED AREA



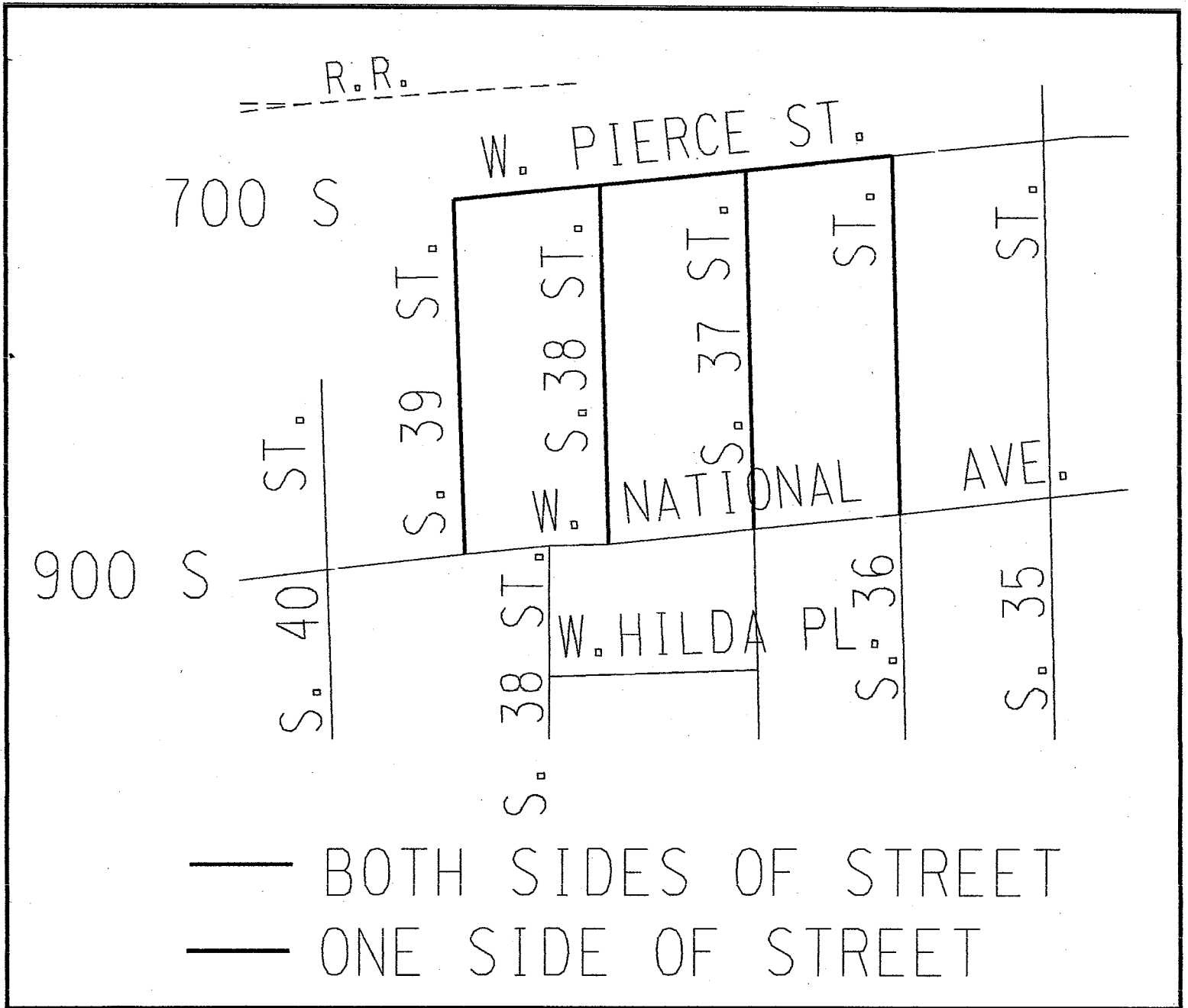
 BOTH SIDES OF STREET  
 ONE SIDE OF STREET



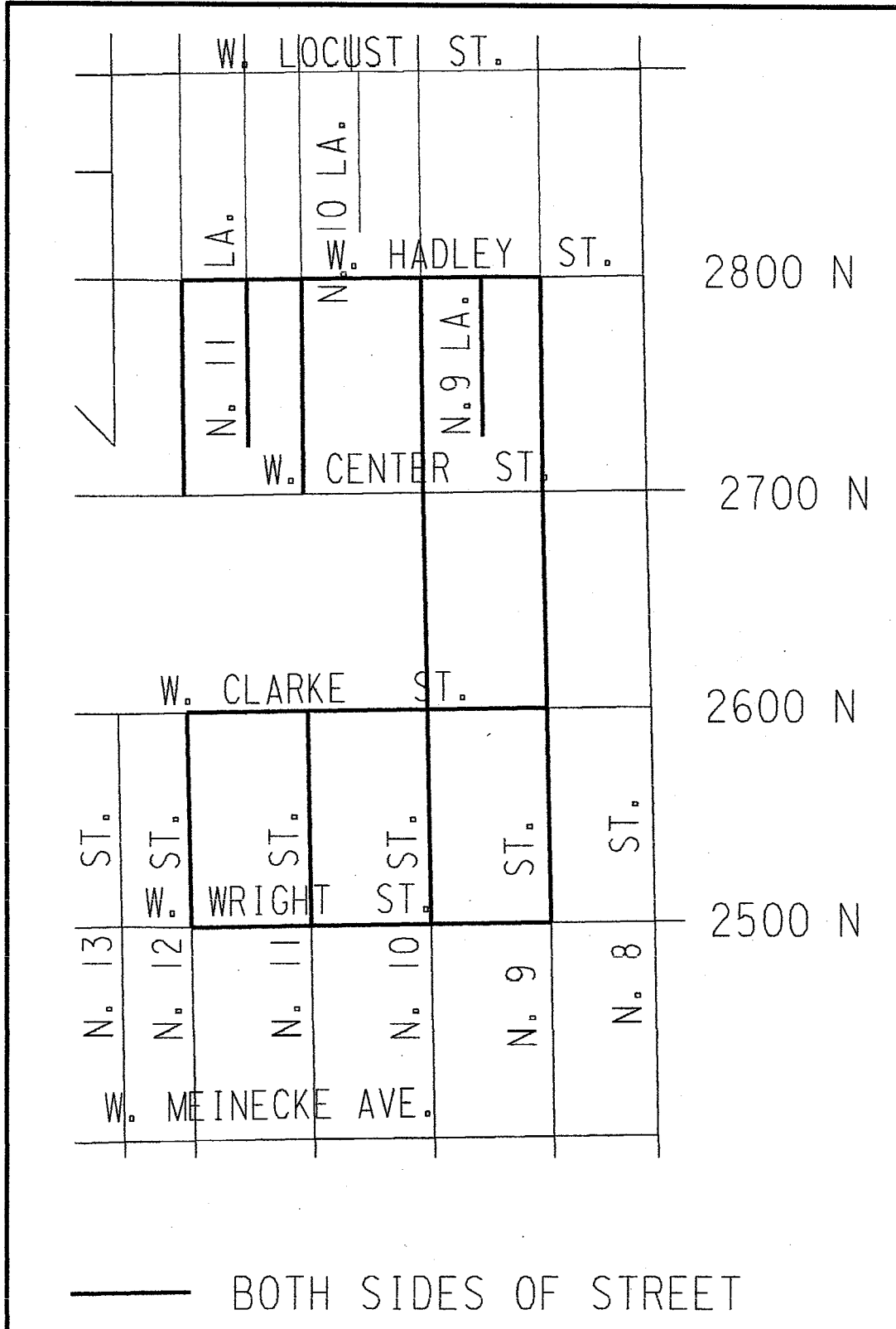
# HARLEY-DAVIDSON COMMUTER PARKING IMPACTED AREA



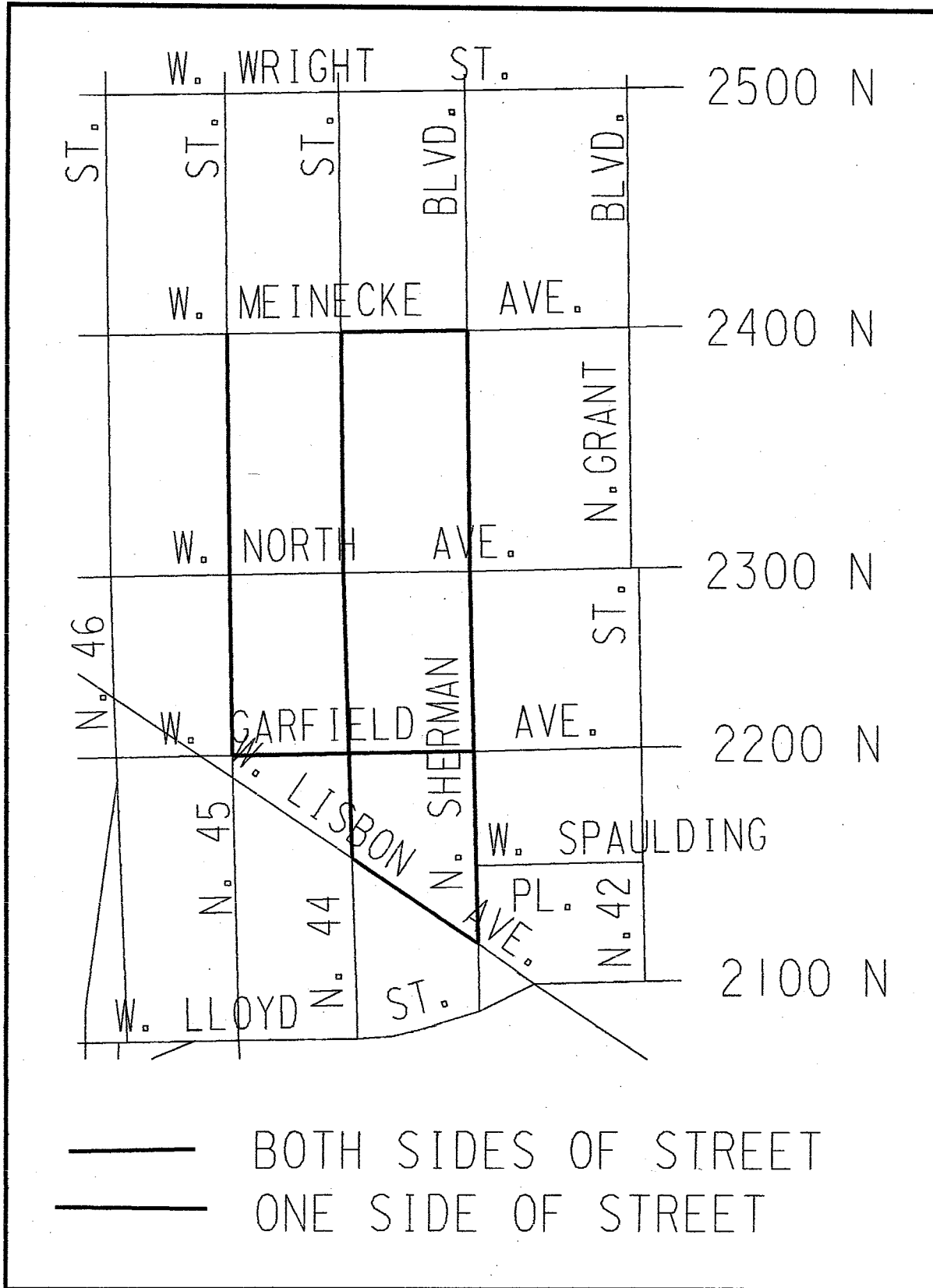
# HARNISCHFEGER PLANT COMMUTER PARKING IMPACTED AREA



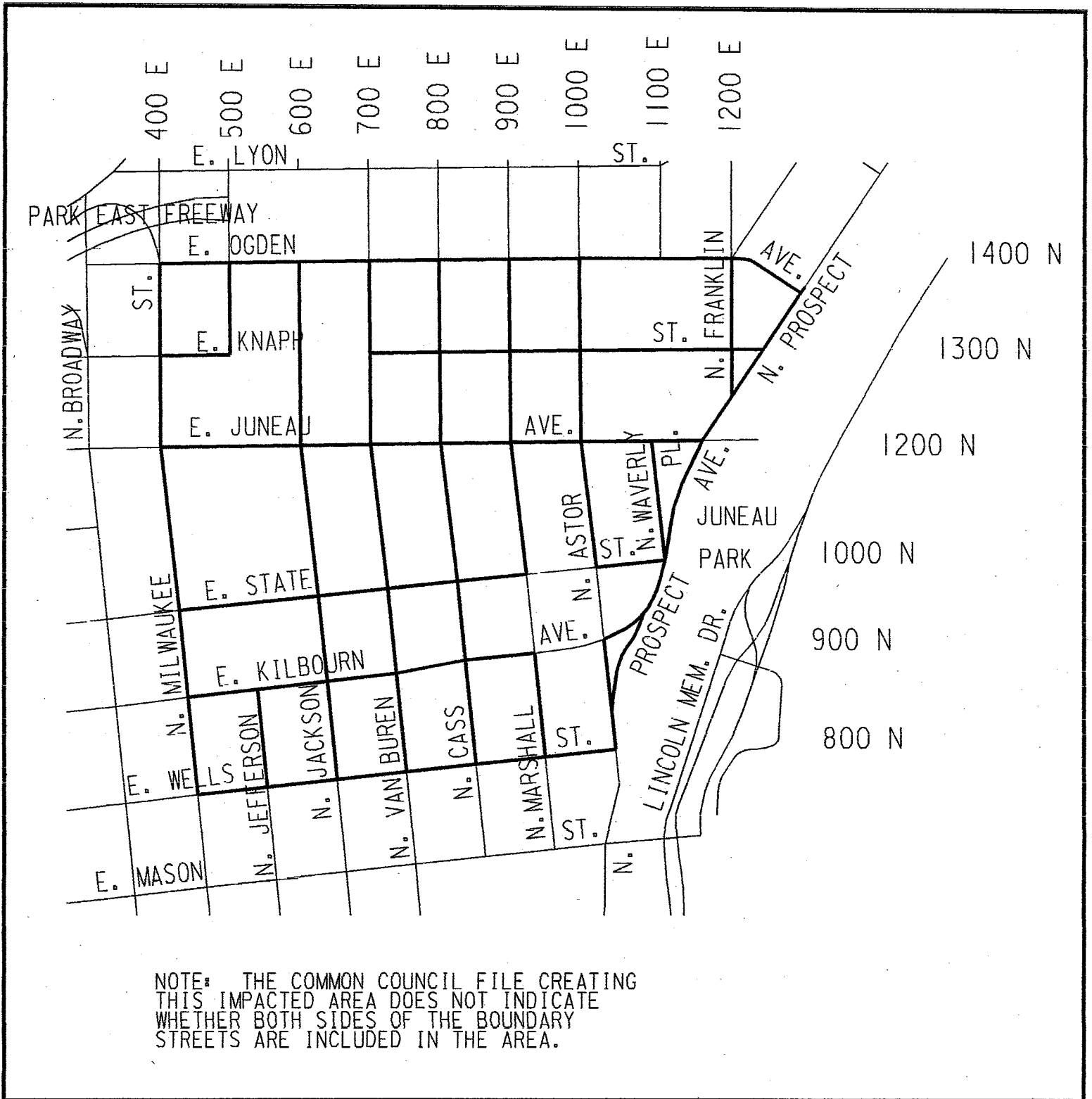
# NORTH DIVISION HS. COMMUTER PARKING IMPACTED AREA



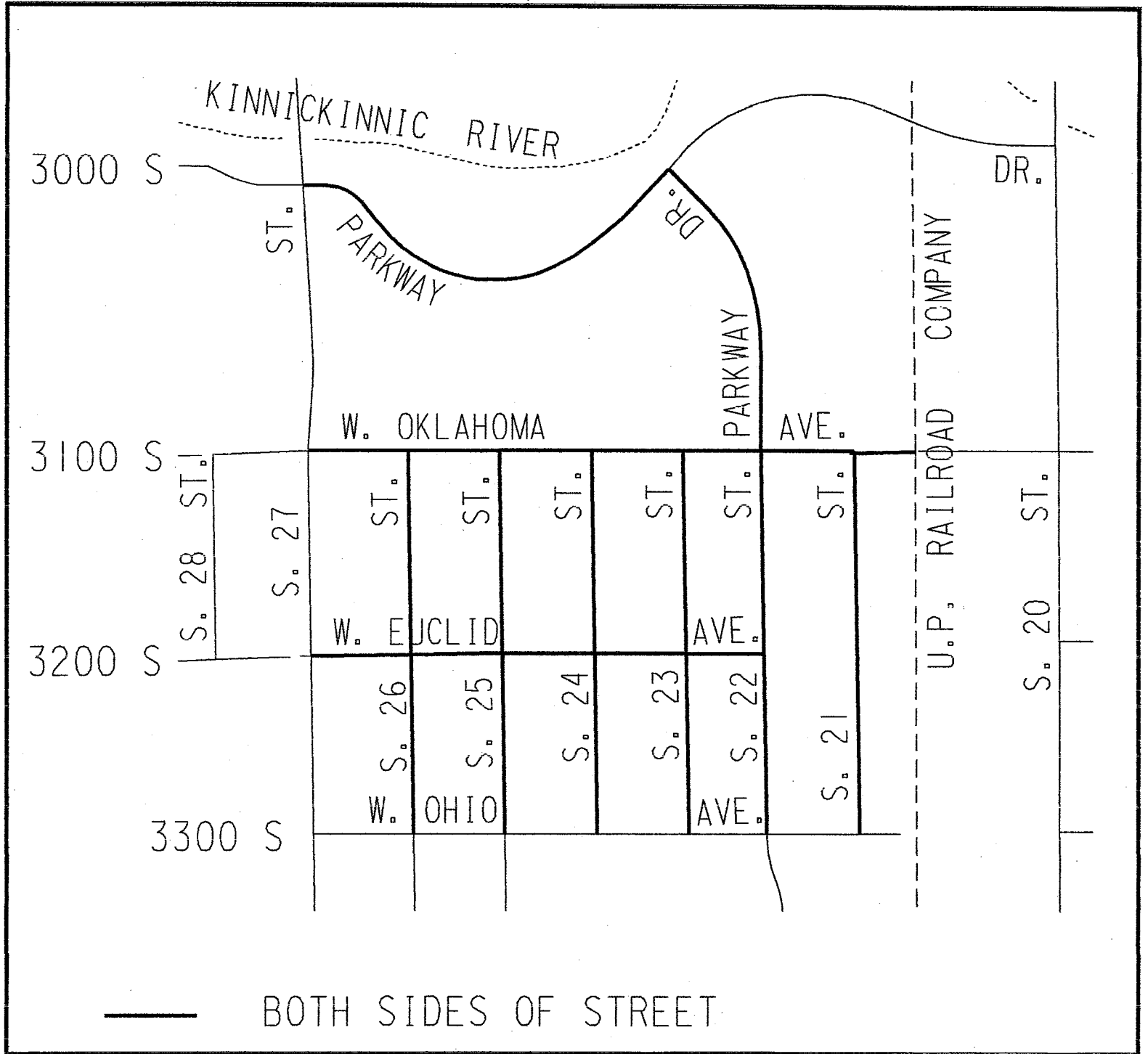
# 4TH & NORTH AVENUE BUSINESS AREA COMMUTER PARKING IMPACTED AREA



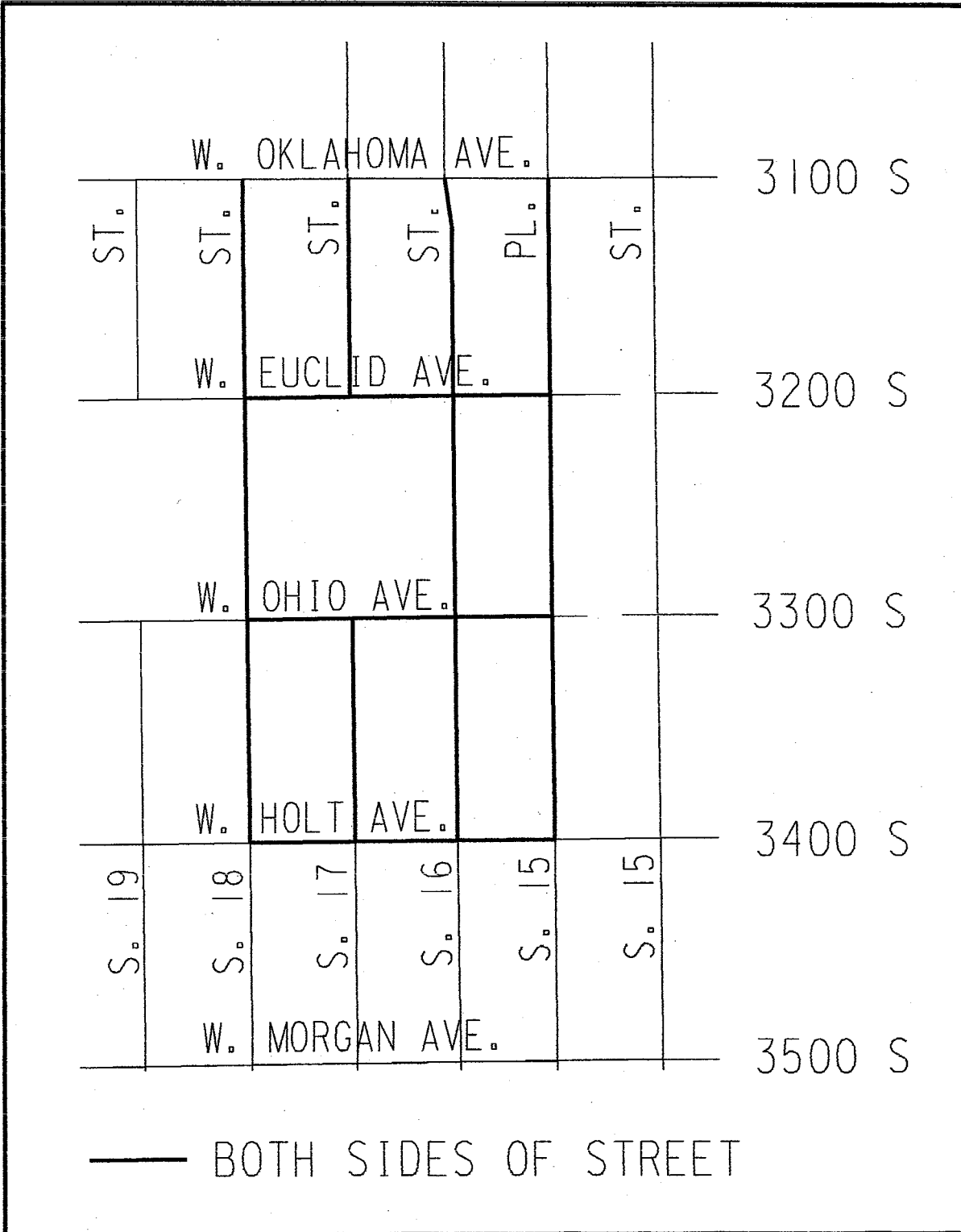
# N. PROSPECT AVE. - E. OGDEN AVE. COMMUTER PARKING IMPACTED AREA



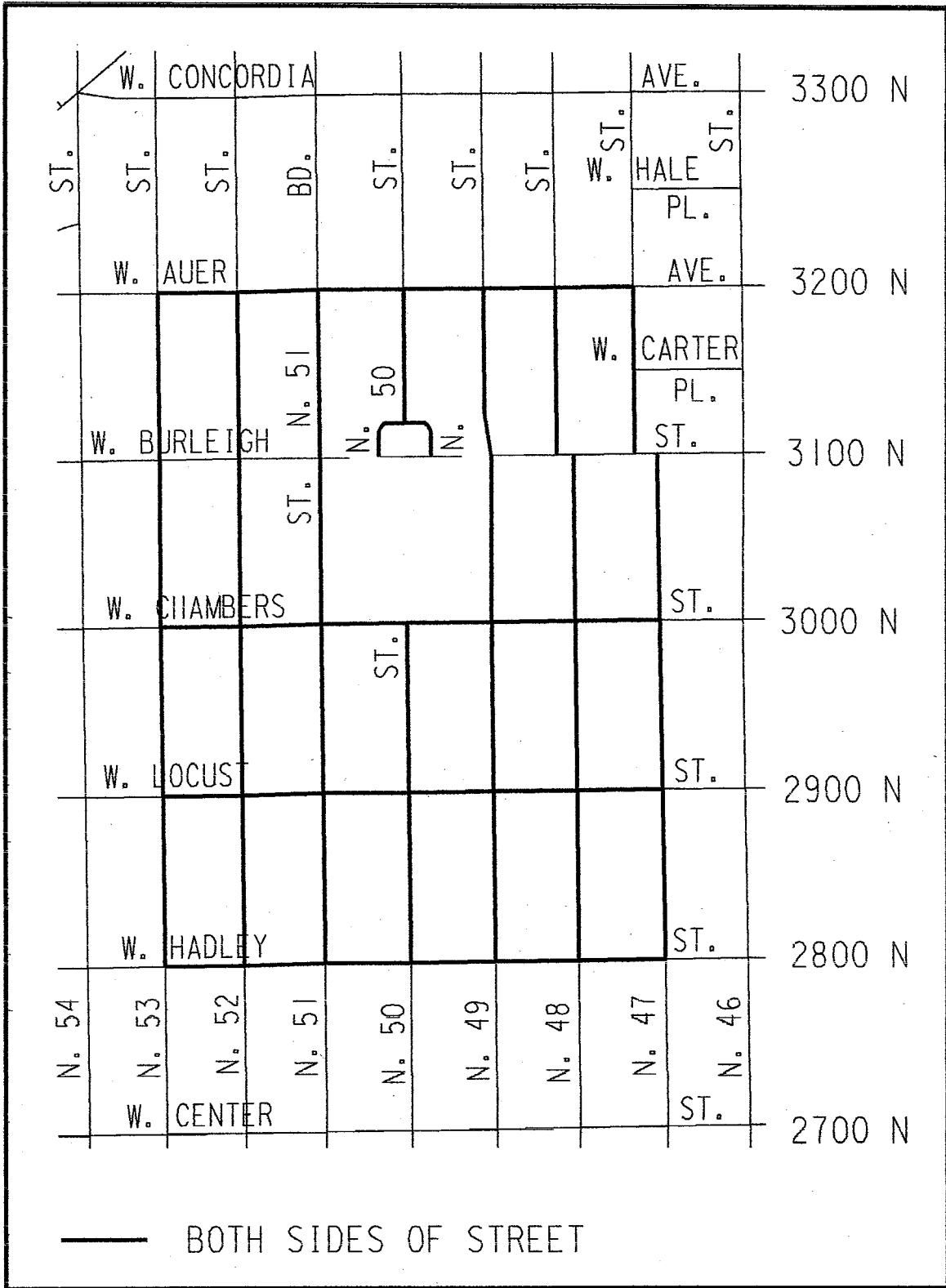
# PULASKI HIGH SCHOOL COMMUTER PARKING IMPACTED AREA



# ST. FRANCIS HOSPITAL COMMUTER PARKING IMPACTED AREA

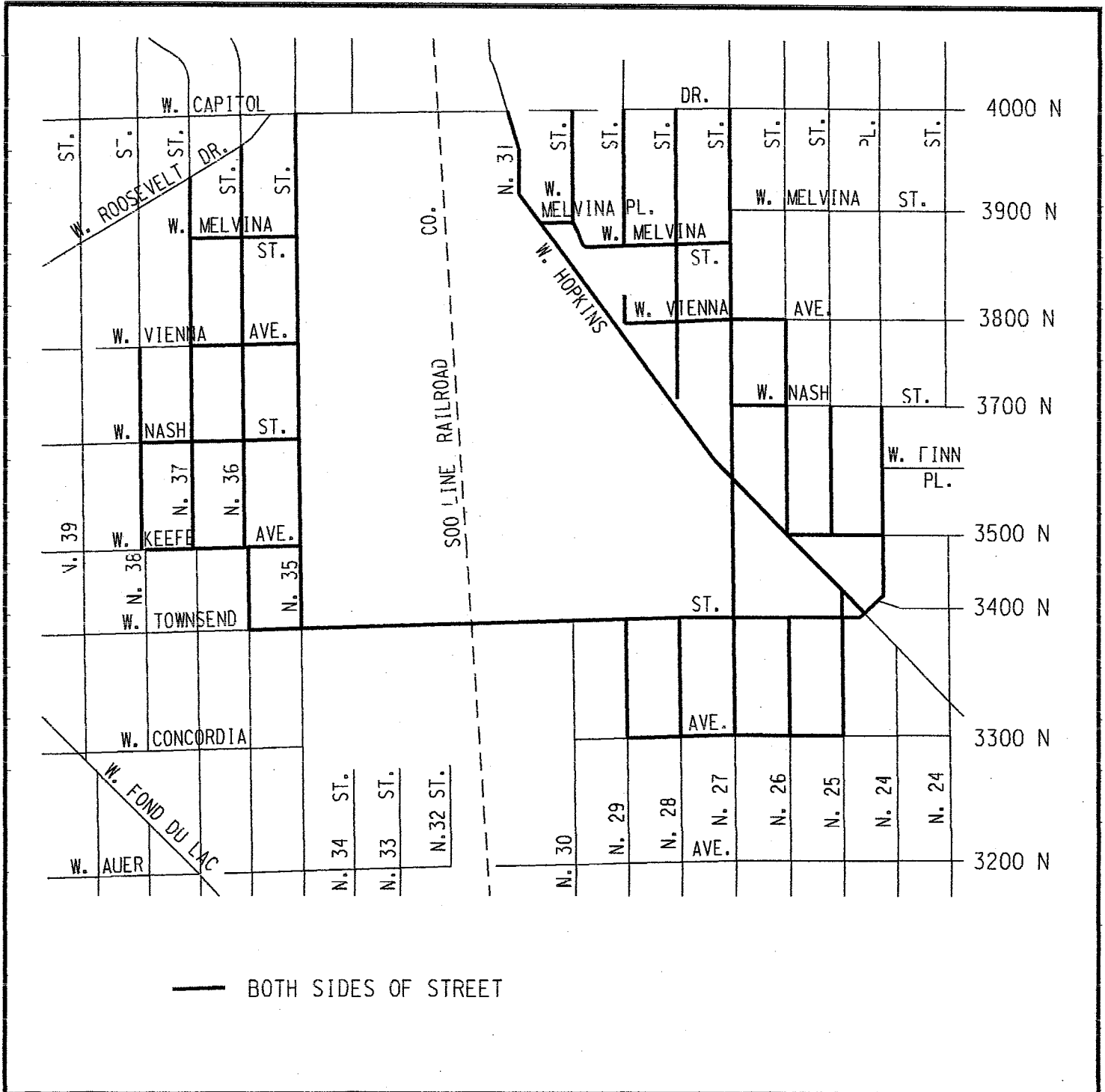


# ST. JOSEPH'S HOSPITAL COMMUTER PARKING IMPACTED AREA



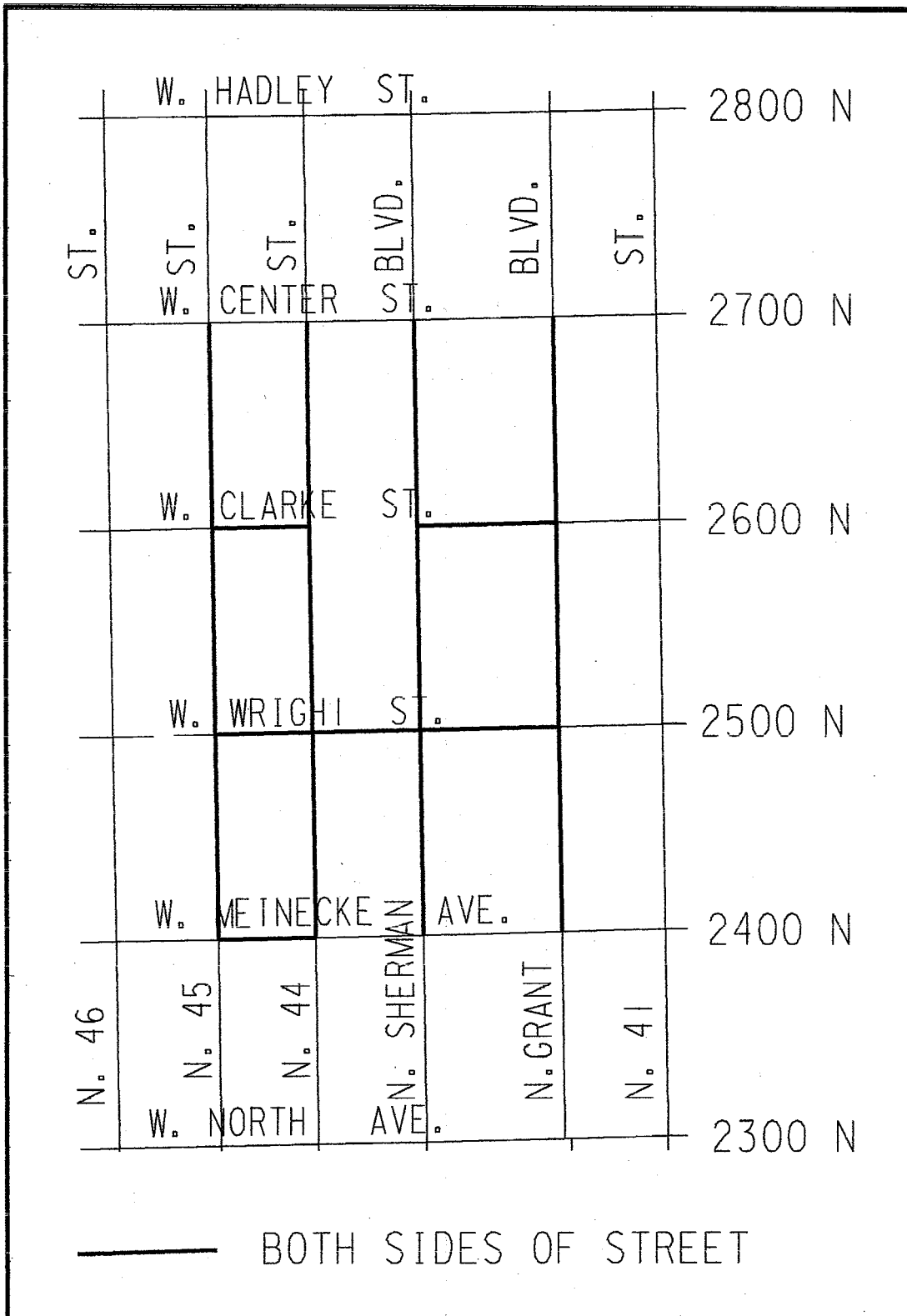


# A.O. SMITH CORP. COMMUTER PARKING IMPACTED AREA



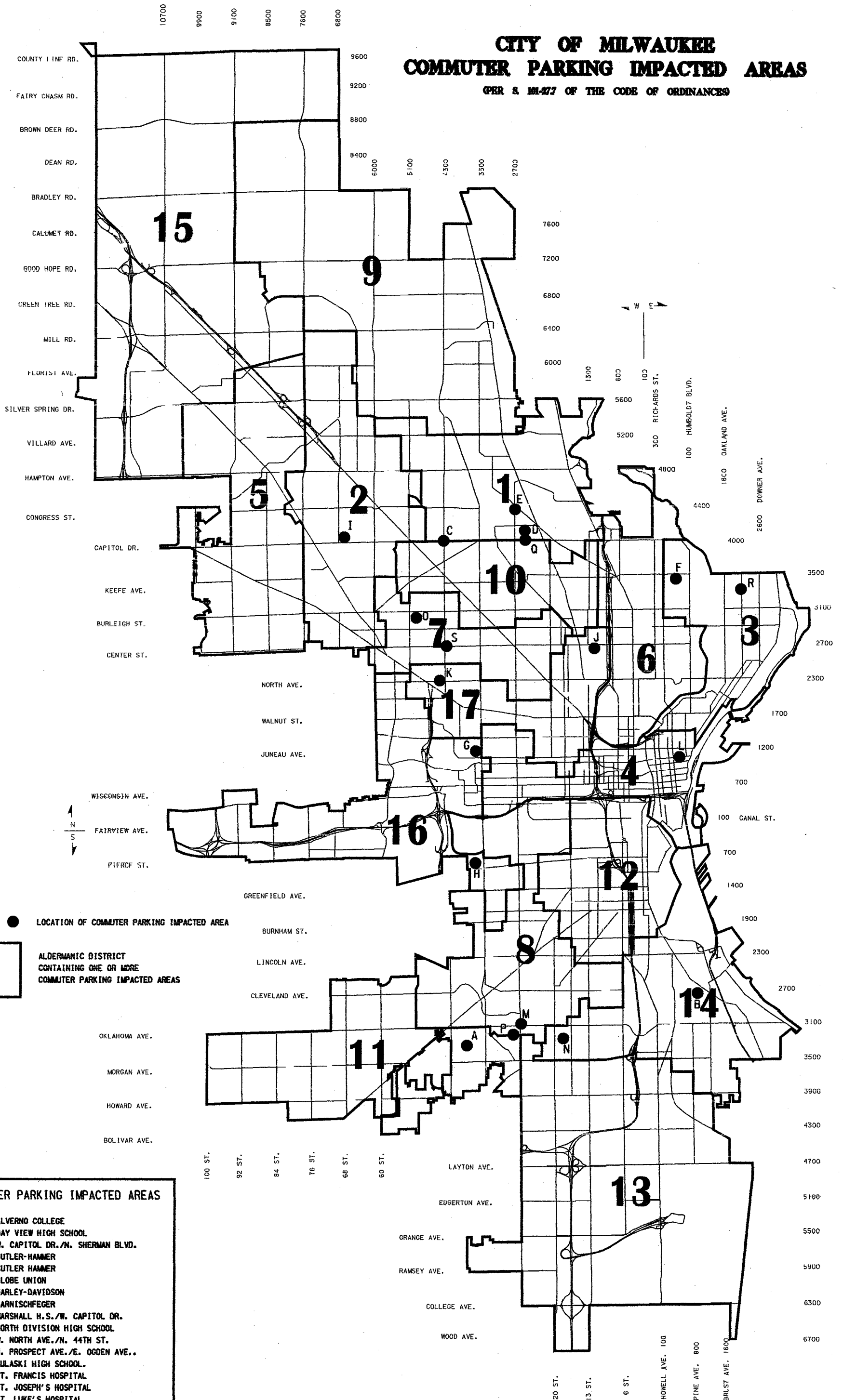


# WASHINGTON HIGH SCHOOL COMMUTER PARKING IMPACTED AREA



# CITY OF MILWAUKEE COMMUTER PARKING IMPACTED AREAS

(PER § 191-277 OF THE CODE OF ORDINANCES)



**11**

● LOCATION OF COMMUTER PARKING IMPACTED AREA

**11** ALDERMANIC DISTRICT CONTAINING ONE OR MORE COMMUTER PARKING IMPACTED AREAS

**COMMUTER PARKING IMPACTED AREAS**

- A ALVERNO COLLEGE
- B BAY VIEW HIGH SCHOOL
- C W. CAPITOL DR./N. SHERMAN BLVD.
- D CUTLER-HAMMER
- E CUTLER HAMMER
- F GLOBE UNION
- G HARLEY-DAVIDSON
- H HARNISCHFEGER
- I MARSHALL H.S./W. CAPITOL DR.
- J NORTH DIVISION HIGH SCHOOL
- K W. NORTH AVE./N. 44TH ST.
- L N. PROSPECT AVE./E. OGDEN AVE.
- M PULASKI HIGH SCHOOL
- N ST. FRANCIS HOSPITAL
- O ST. JOSEPH'S HOSPITAL
- P ST. LUKE'S HOSPITAL
- Q A.O. SMITH CORP.
- R UNIVERSITY OF WISCONSIN
- S WASHINGTON HIGH SCHOOL

