

A1 Site Plan - Architectural
 1" = 40'-0"

3/10" = 1'-0"

PROPERTY OF POTAWATOMI CASINO
 Drawn by S.J. FOERTSCH 9/21/07
 Approved _____ Date _____

TEMPORARY TRAINING TRAILERS



SITEPLAN
 APPROVED BY _____
 Date Approved 9/21/07

File No. _____
 Drawing No. AS-1100
 Sheet SH of TS

Potawatomi Bingo Casino
 Forest County Potawatomi
 Community of Wisconsin
 1721 West Canal Street
 Milwaukee, WI 53233

Casino Expansion

ANALYSIS: 9/21/06
 P&C/DCB P&C/DCB 300

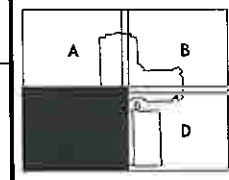
Submitted by: _____
 Site Plan - Architectural

AS-1100 R2

HNEK BOBO GROUP
 Architects Interiors
 104 South Forest St., Milwaukee, WI 53205-2804
 phone 414.224.2277 fax 414.224.2277 www.hnkb.com

In association with:
 Engberg Anderson Design Partnership, Inc.
 611 North Broadway
 Milwaukee, Wisconsin 53202
 www.eadp.com
 PH 414.944.9000 FX 414.944.9100

- Specialty:
 Civil, Architect, Structural & Associates, Inc.
 211 West State Street, Suite 1000, Milwaukee, WI 53203
 PH 414.224.2277 FX 414.224.2277
- Specialty:
 John A. Martin & Associates, Inc.
 211 West State Street, Suite 1000, Milwaukee, WI 53203
 PH 414.224.2277 FX 414.224.2277
- Specialty:
 Finagan Robinson & Associates
 201 East Center Street, Suite 200, Milwaukee, WI 53202
 PH 414.224.2277 FX 414.224.2277
- Specialty:
 RFR Consulting Engineers, Inc.
 271 Bruce Street, Suite 200, Milwaukee, WI 53203
 PH 414.224.2277 FX 414.224.2277
- Specialty:
 Creative Lighting Design & Engineering
 200 West State Street, Suite 1000, Milwaukee, WI 53203
 PH 414.224.2277 FX 414.224.2277
- Specialty:
 Civil/Structural
 200 West State Street, Suite 1000, Milwaukee, WI 53203
 PH 414.224.2277 FX 414.224.2277
- Specialty:
 F&I Design
 200 West State Street, Suite 1000, Milwaukee, WI 53203
 PH 414.224.2277 FX 414.224.2277
- Specialty:
 License-Free Design
 200 West State Street, Suite 1000, Milwaukee, WI 53203
 PH 414.224.2277 FX 414.224.2277
- Specialty:
 Walker Parking Consultants
 200 West State Street, Suite 1000, Milwaukee, WI 53203
 PH 414.224.2277 FX 414.224.2277
- Specialty:
 Leach Bates & Associates
 200 West State Street, Suite 1000, Milwaukee, WI 53203
 PH 414.224.2277 FX 414.224.2277
- Specialty:
 Independence
 200 West State Street, Suite 1000, Milwaukee, WI 53203
 PH 414.224.2277 FX 414.224.2277
- Specialty:
 Wightman, Johnson, Hudson & Williams, Inc.
 200 West State Street, Suite 1000, Milwaukee, WI 53203
 PH 414.224.2277 FX 414.224.2277
- Specialty:
 Energy-Systems Engineering, Inc.
 200 West State Street, Suite 1000, Milwaukee, WI 53203
 PH 414.224.2277 FX 414.224.2277
- Specialty:
 Atmospheric Fine and Water Effects, Inc.
 200 West State Street, Suite 1000, Milwaukee, WI 53203
 PH 414.224.2277 FX 414.224.2277

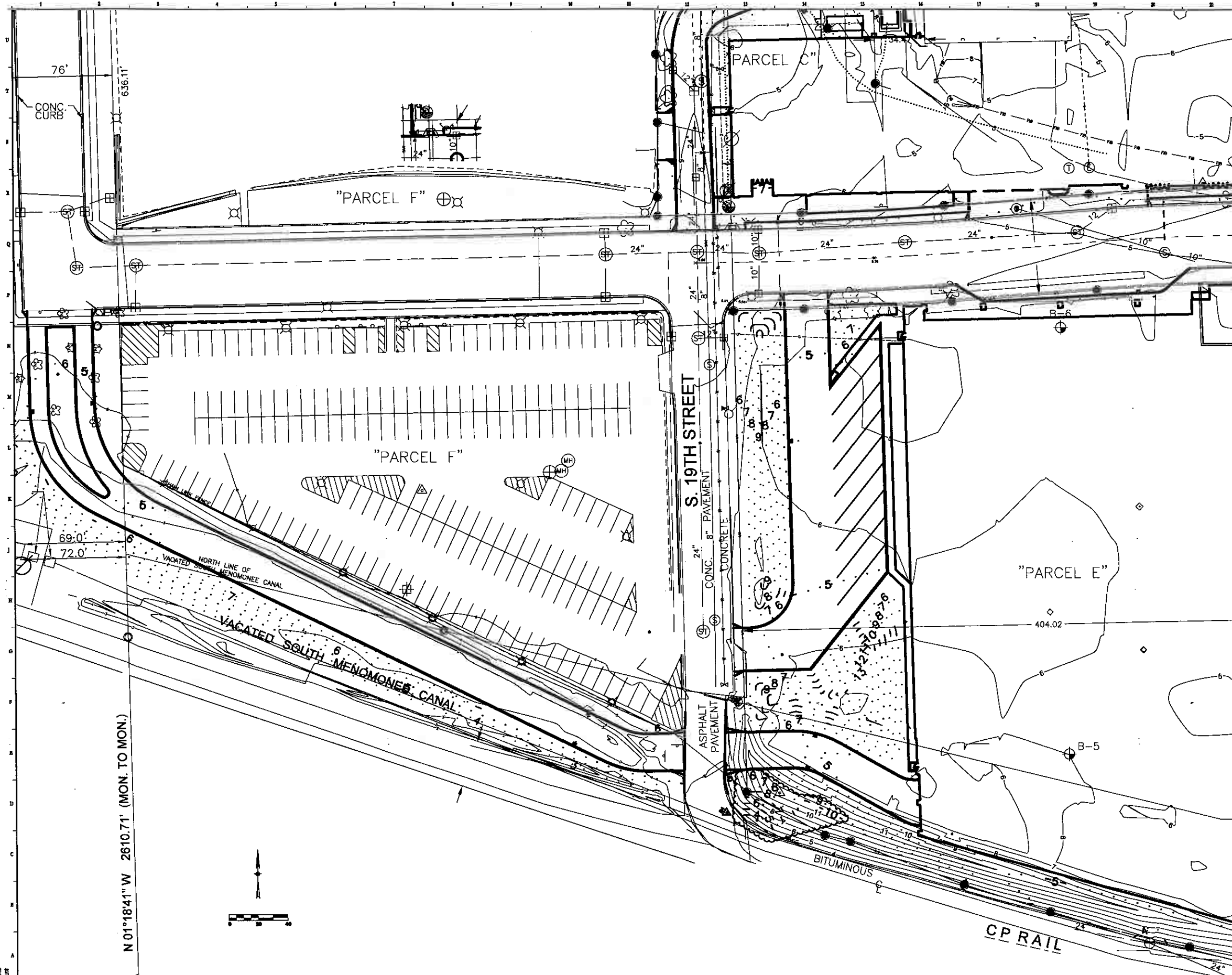


▲	ASPHALT DRIVE ASSESS
▲	ASPHALT DRIVE ASSESS
▲	ASPHALT DRIVE ASSESS
▲	ASPHALT DRIVE ASSESS

Project:
Potawatomi Bingo Casino
 Forest County Potawatomi
 Community Of Wisconsin
 123 West Center Street
 Milwaukee, WI 53203

Project:
CASINO EXPANSION
 Project No.: 09.01.06
 Date: APRIL 24, 2006
 Designer: JAC
 Checker: JPB
 Title: Civil Engineering - Civil
 Grading Plan - Area C

Sheet:
C-CG-1103 R4



DATE
 SHEET
 INDEX

