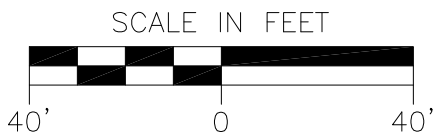
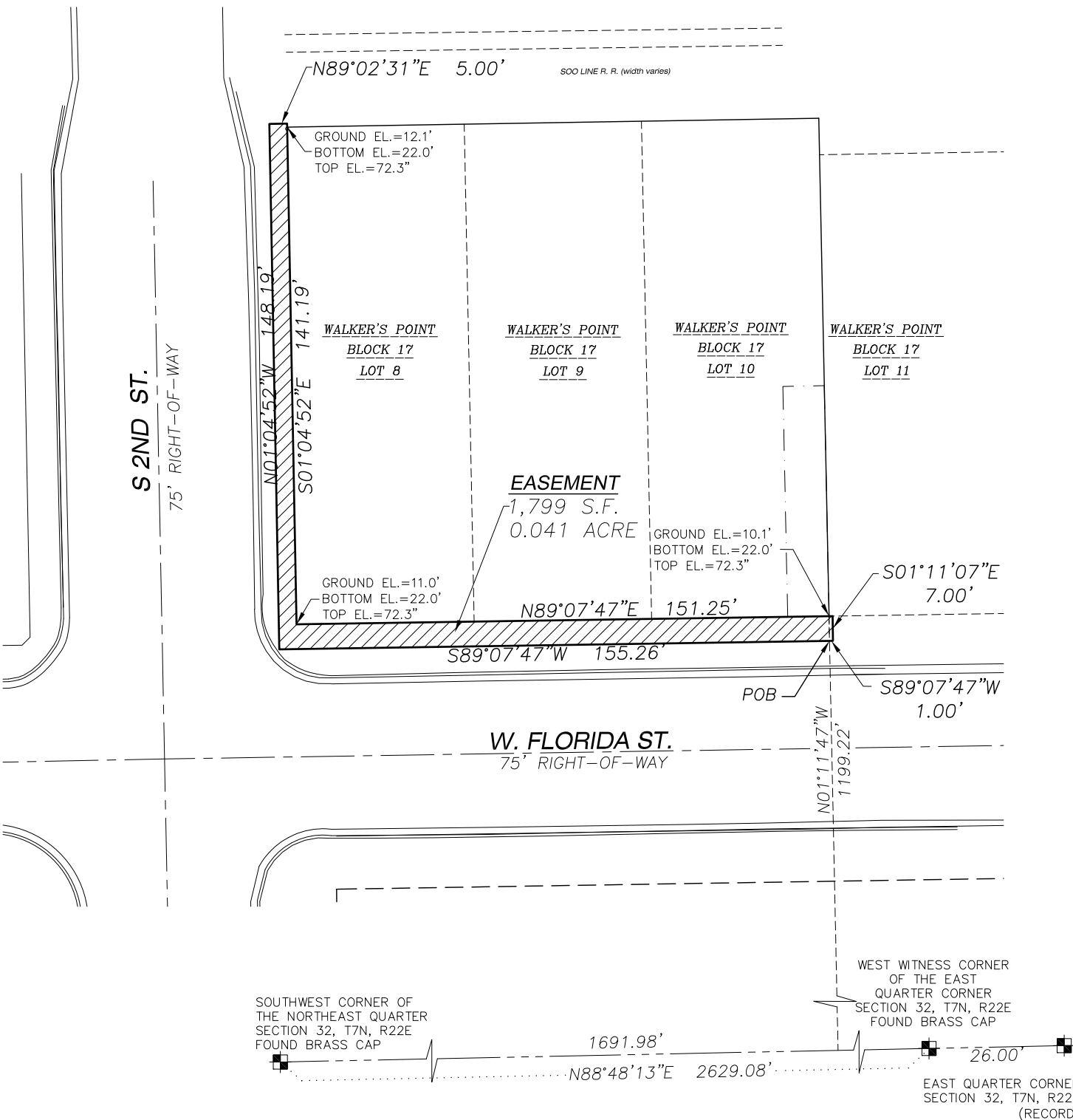


AERIAL EASEMENT



File: R: \2016\16C7498 324 S. Second St. Apartments\dwg\Easements\16-7498 exhibit.dwg Layout: SHEET 1 User: awilkowski Plotted: Feb 08, 2017 - 2:15pm

<p>JSD Professional Services, Inc. Engineers • Surveyors • Planners</p> <p>MILWAUKEE REGIONAL OFFICE N22 W22931 NANCY'S COURT SUITE 3 WALKESHA, WISCONSIN 53186 262.513.0666 PHONE 262.513.1232 FAX</p> <p>www.jsdinc.com</p>	PROJECT: 2ND AND FLA APARTMENTS MILWAUKEE, WI	SHEET TITLE: AERIAL EASEMENT	JSD PROJECT NUMBER: 16-7498	SHEET NUMBER: 1 of 2
			DRAWN BY: AWW CHECKED BY: AWW	
			DATE: 02/08/2017	

AERIAL EASEMENT

LEGAL DESCRIPTION

A PORTION OF BLOCK 17, WALKER'S POINT LOCATED IN THE NORTHEAST QUARTER OF SECTION 32, TOWNSHIP 7 NORTH, RANGE 22 EAST, CITY OF MILWAUKEE, MILWAUKEE COUNTY, WISCONSIN, BOUNDED AND DESCRIBED AS FOLLOWS:

COMMENCING AT THE SOUTHWEST CORNER OF THE NORTHEAST QUARTER OF SAID SECTION 32;

THENCE NORTH 88°48'13" EAST, ALONG THE SOUTH LINE OF THE NORTHEAST QUARTER OF SAID SECTION 32, 1691.98 FEET;

THENCE NORTH 01°11'47" WEST, 1199.22 FEET TO A POINT 7.00 FEET SOUTHERLY OF THE SOUTH LINE OF SAID BLOCK 17 AND TO A POINT (GROUND ELEVATION 10.1', BOTTOM ELEVATION 22.0', TOP ELEVATION 72.3'), SAID POINT ALSO BEING THE POINT OF BEGINNING;

THENCE SOUTH 89°07'47" WEST PARALLEL WITH AND MEASURED AT RIGHT ANGLES TO THE SOUTH LINE OF SAID BLOCK 17, 155.26 FEET TO A POINT (GROUND ELEVATION 11.0', BOTTOM ELEVATION 22.0', TOP ELEVATION 72.3');

THENCE NORTH 01°04'52" WEST PARALLEL WITH AND MEASURE AT RIGHT ANGLES TO THE WEST LINE OF SAID BLOCK 17, 148.19 FEET TO A POINT (GROUND ELEVATION 12.1', BOTTOM ELEVATION 22.0', TOP ELEVATION 72.3');

THENCE NORTH 89°02'31" EAST, 5.00 FEET TO A POINT (GROUND ELEVATION 12.1', BOTTOM ELEVATION 22.0', TOP ELEVATION 72.3');

THENCE SOUTH 01°04'52" EAST ALONG THE WEST LINE OF SAID BLOCK 17, 141.19 FEET TO THE SOUTHWEST CORNER OF SAID BLOCK 17 AND TO A POINT (GROUND ELEVATION 11.0', BOTTOM ELEVATION 22.0', TOP ELEVATION 72.3');


THENCE NORTH 89°07'47" EAST ALONG THE SOUTH LINE OF SAID BLOCK 17, 151.25 FEET TO A POINT (GROUND ELEVATION 10.1', BOTTOM ELEVATION 22.0', TOP ELEVATION 72.3');

THENCE SOUTH 01°11'07" EAST, 7.00 FEET TO A POINT (GROUND ELEVATION 9.7', BOTTOM ELEVATION 22.0', TOP ELEVATION 72.3');

THENCE SOUTH 89°07'47" WEST, 1.00 FEET TO THE POINT OF BEGINNING;

CONTAINING 1,799 SQUARE FEET OR 0.041 ACRES MORE OR LESS.

File: R:\2016\16C7498\324 S. Second St. Apartments\dwg\Easements\16-7498_exhibit.dwg Layout: SHEET 2 User: awilkowski Plotted: Feb 08, 2017 - 2:14pm

 <p>JSD Professional Services, Inc. Engineers • Surveyors • Planners</p> <p>MILWAUKEE REGIONAL OFFICE N22 W22931 NANCY'S COURT SUITE 3 WAUKESHA, WISCONSIN 53186 262.513.0666 PHONE 262.513.1232 FAX</p> <p>www.jsdinc.com</p>	PROJECT: 2ND AND FLA APARTMENTS MILWAUKEE, WI	SHEET TITLE: AERIAL EASEMENT	JSD PROJECT NUMBER: 16-7498 DRAWN BY: AWW CHECKED BY: AWW DATE: 02/08/2017	SHEET NUMBER: <div style="font-size: 2em; font-weight: bold; text-align: center;">2 of 2</div>