

2013 SAFETY ASSESSMENT & ANALYSIS REPORT



1. Policy Statement

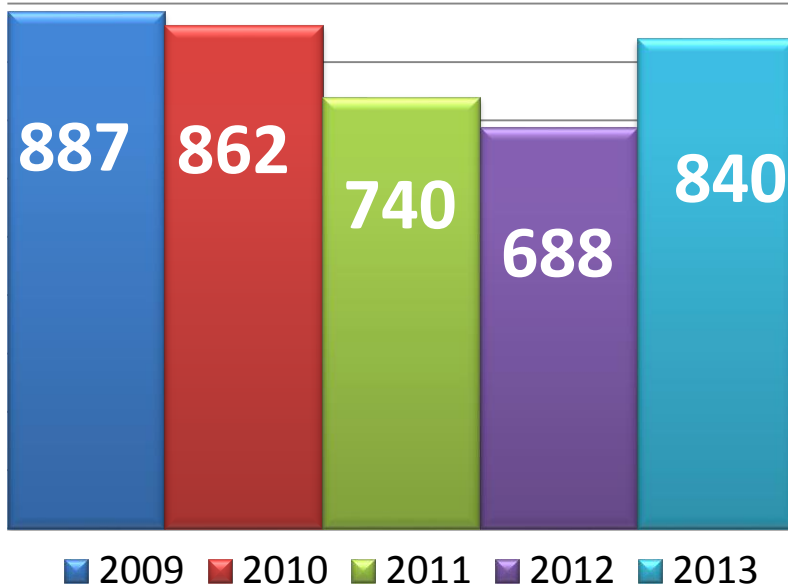
- ▶ General Safety Policies
 - Eye Protection
 - Safety Shoes
 - Safety Vests
 - Seat Belts
 - Hard Hats
 - Stereo/Radio Headphones
 - Hazardous Communications Standard
 - Injury Reporting

2. Safety Best Practices

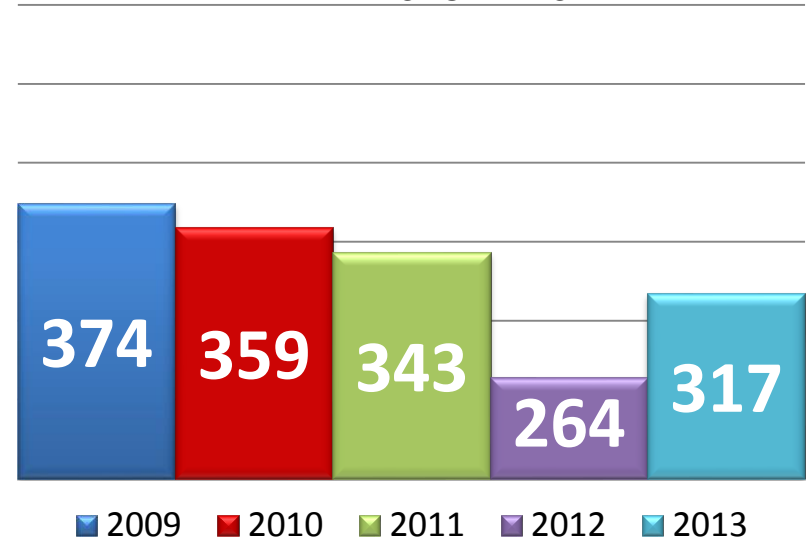
Safety Items	Currently in Place? Yes/No	Date Effective	Who's Responsible	Last Time Updated
Work Rules/Handbook that Outlines Safety Expectations & Guidelines	Yes	6/26/2012	DPW Administration/Safety	6/26/2012
Mandatory Safety Training	Yes	On going	Safety	On going
Optional Safety Training	Yes	On going	Safety	On going
Viable & Functioning Safety Committee	Yes	On going	Safety	On going
Safety Orientation for New Employees	Yes	On going	Safety	10/26/2005
Job Hazard Analysis	Yes	9/20/2013	Safety	On going
Safety Field Inspections	Yes	1/01/2013	Safety Specialist	On going
Accident Investigation Protocol & Forms	Yes	On going	D.E.R./Safety	2009
Mechanism for Employees to Report Safety Concerns before Accident Occurs	Yes	6/26/2012	DPW Admin/Safety	6/26/2012
Recognition Programs/Safety Awards	Yes	On going	Safety	3/2007
Medium for Sharing Safety Information & Report with Employees	Yes	On going	Safety Committee Reports Posted & 300A Logs	Oct. 2013
Supervisory Job Descriptions that Include Safety Related Goals/Outcomes	Yes	6/26/2012	Annual Safety Plan & DPW Work Rules	2013
Designated Individual Responsible for Safety Program Effectiveness	Yes	Sept. 2013	Safety Supervisor	On going

3. Analysis of Data

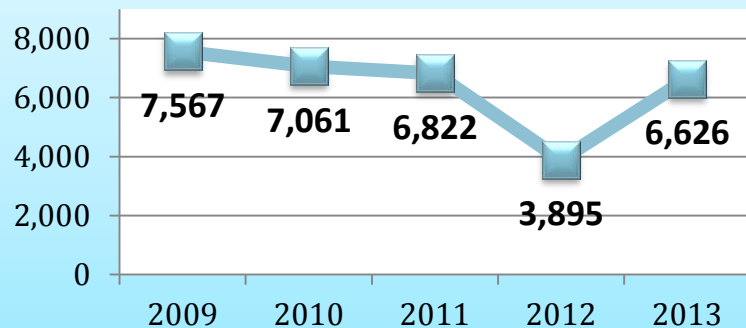
**DPW TOTAL REPORTED INJURIES
PAST 5 YEARS**



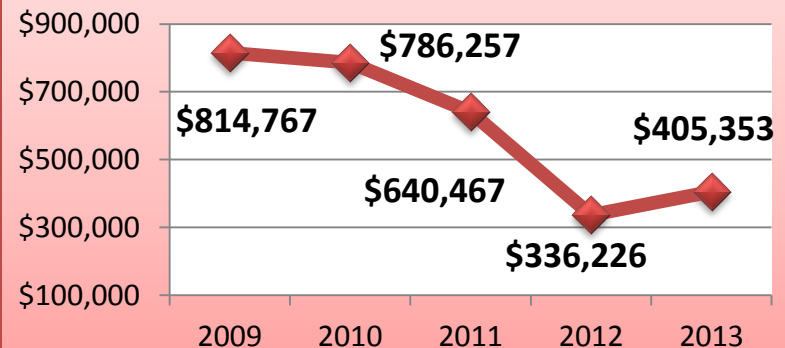
**DPW TOTAL SERIOUS CLAIMS
PAST 5 YEARS**



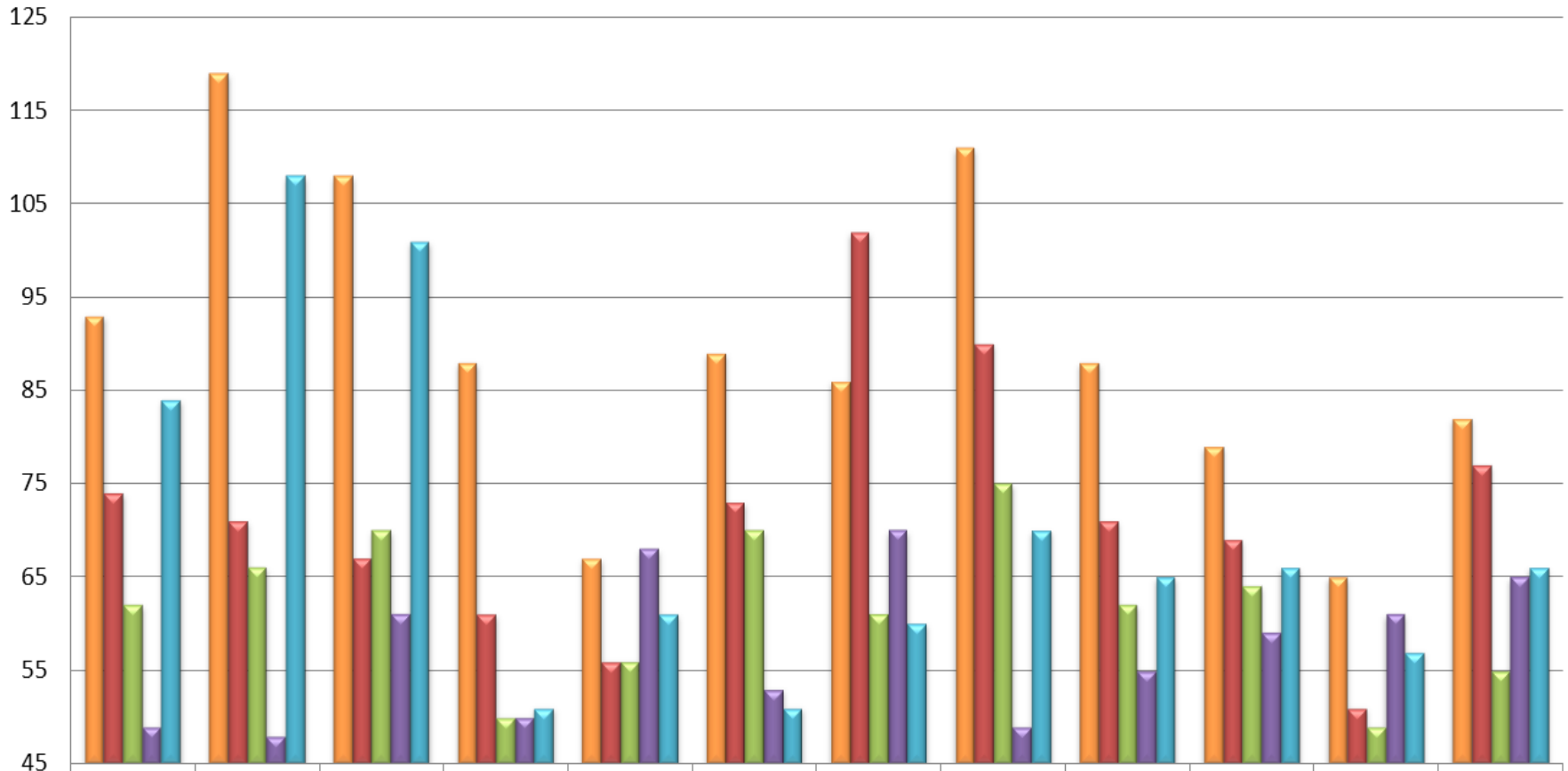
**DPW TOTAL LOST WORKDAYS
2009-2013**



**DPW TOTAL INJURY PAY
2009-2013**



**DPW Total Reported Injuries by Month
2010-2013
Highest Year 2008 Comparison**



	Jan	Feb	March	April	May	June	July	Aug	Sept	Oct	Nov	Dec
2008	93	119	108	88	67	89	86	111	88	79	65	82
2010	74	71	67	61	56	73	102	90	71	69	51	77
2011	62	66	70	50	56	70	61	75	62	64	49	55
2012	49	48	61	50	68	53	70	49	55	59	61	65
2013	84	108	101	51	61	51	60	70	65	66	57	66

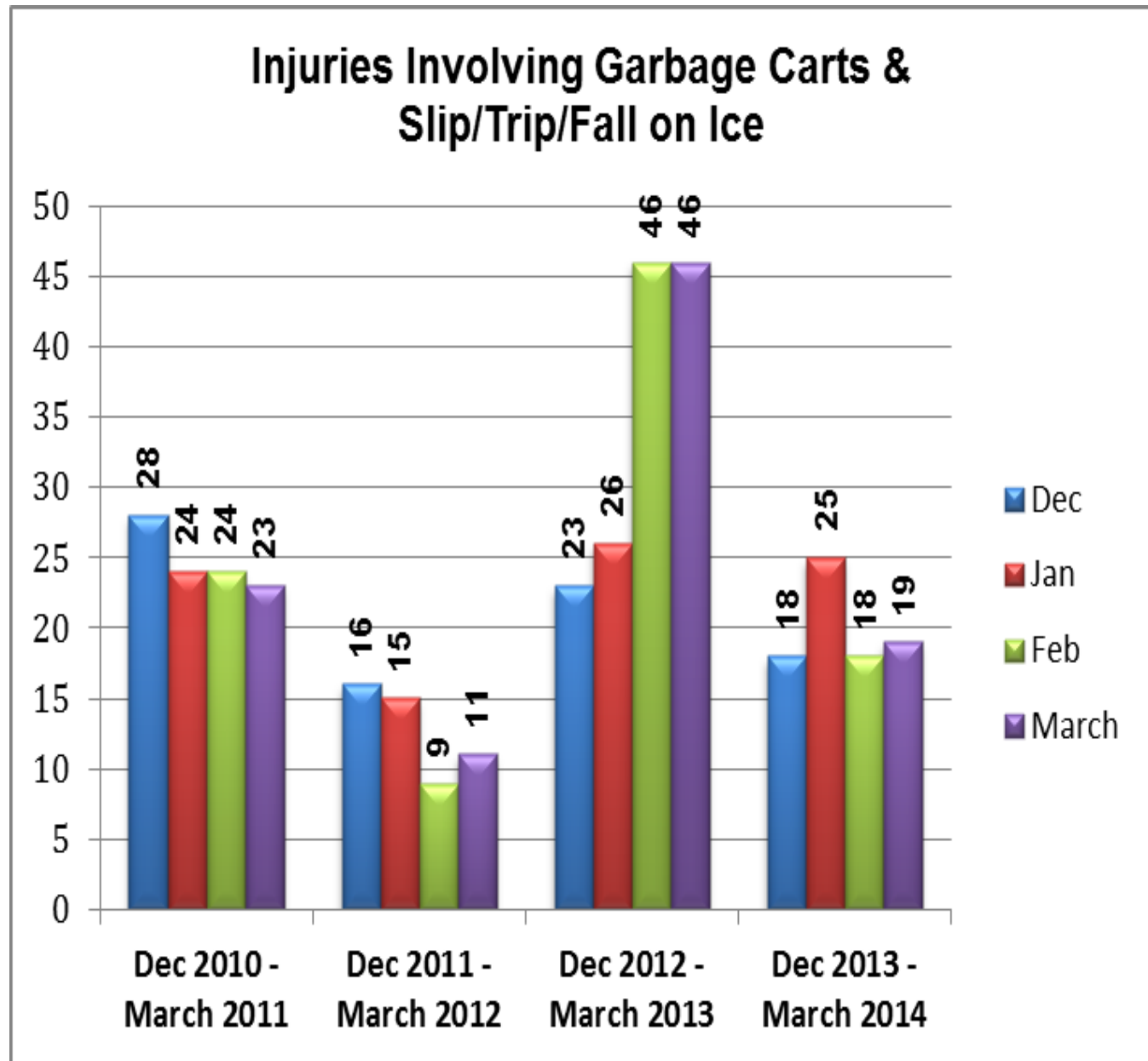
❄ External Factors: Weather

▶ Snow & Cold

	2013 Snow/Ice Operations	2012 Snow/Ice Operations	2011 Snow/Ice Operations	2010 Snow/Ice Operations
January	11	15	21	7
February	22	7	19	14
March	8	4	4	1
April	0	0	1	0
November	5	0	1	0
December	29	9	5	11
TOTAL	75	38	50	33

- The winter of 2013 was plagued with 136 Sanitation workers injuring themselves removing carts while on snow/ice or black ice.

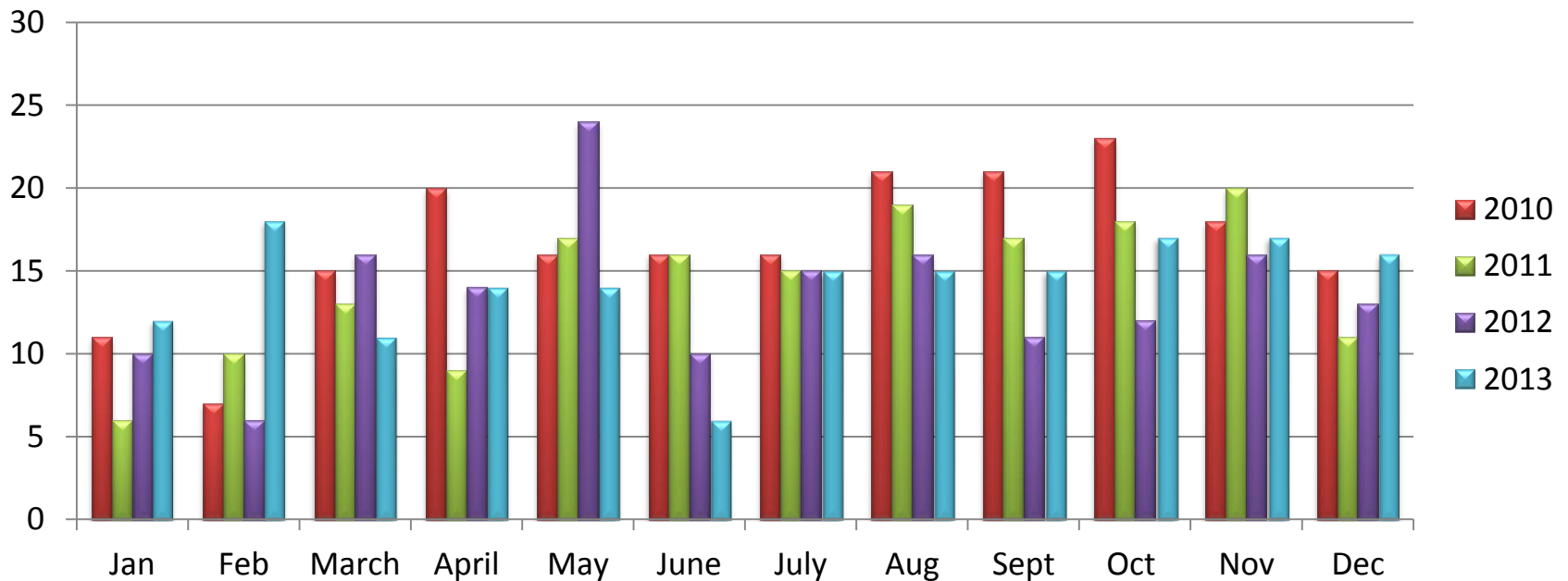
- There was nearly a 43% increase in reported injuries from the previous year 2012 from 58.



▶ Potholes

- 2013 – 12,836 pothole request; 5 days response time
- 2012 – 8,017 pothole requests; 3 days response time
- 2011 – 12,099 pothole requests; 5 day 23 hrs response time
- 2010 – 9,752 pothole requests; 3 day 17 hrs response time

DPW Infrastructure **Reported** Injuries







Water Mains

MILWAUKEE WATER WORKS

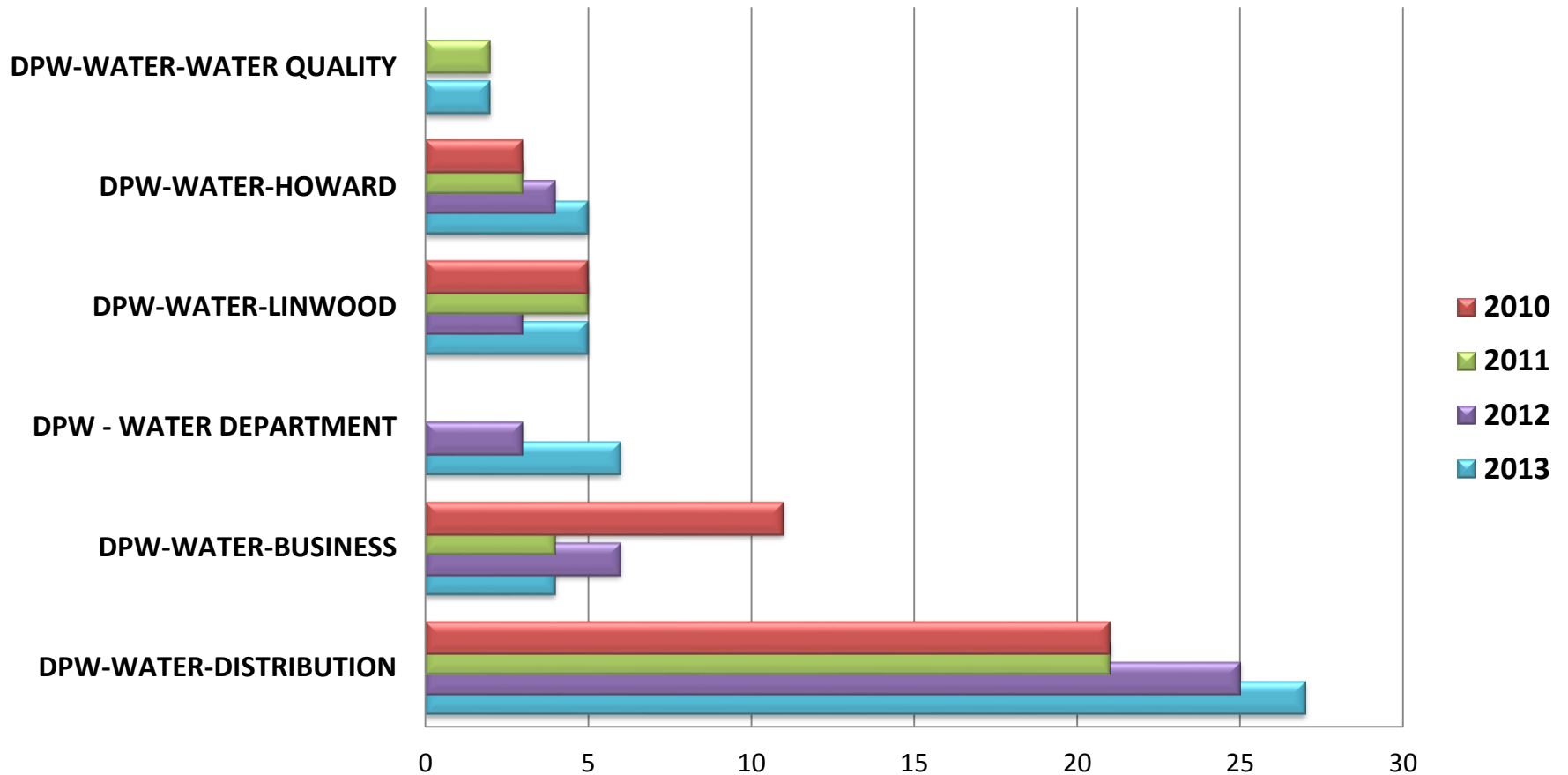
5 and 10 YEAR MAIN BREAK REPAIR HISTORY

MONTH											AVERAGES	
											10 Year	5 Year
	2005	2006	2007	2008	2009	2010	2011	2012	2013	2014	2005-2014	2010-2014
January	100	45	52	73	120	60	118	52	139	211	97	116
February	48	68	209	119	172	59	81	29	107	234	113	102
March	40	47	93	41	48	27	46	22	61	108	53	53
April	50 ¹	17	30	26	18	18	18	12	20	38	25	21
May	21	20	51	19	17	11	10	16	24	111	30	34
June	37	24	46	18	34	18	35	38	21	49	32	32
July	65	55	59	33	31	43	41	90	29	37	48	48
August	83	55	36	66	29	48	69	62	27	34	51	48
September	93	39	32	41	38	30	47	35	43	23	42	36
October	26	27	20	24	18	23	32	34	29	19	25	27
November	32	36	29	29	24	29	22	37	25		29	27
December	75	52	53	64	32	73	28	40	91		57	53
TOTALS	670	485	710	553	581	439	547	467	616	845	591	583

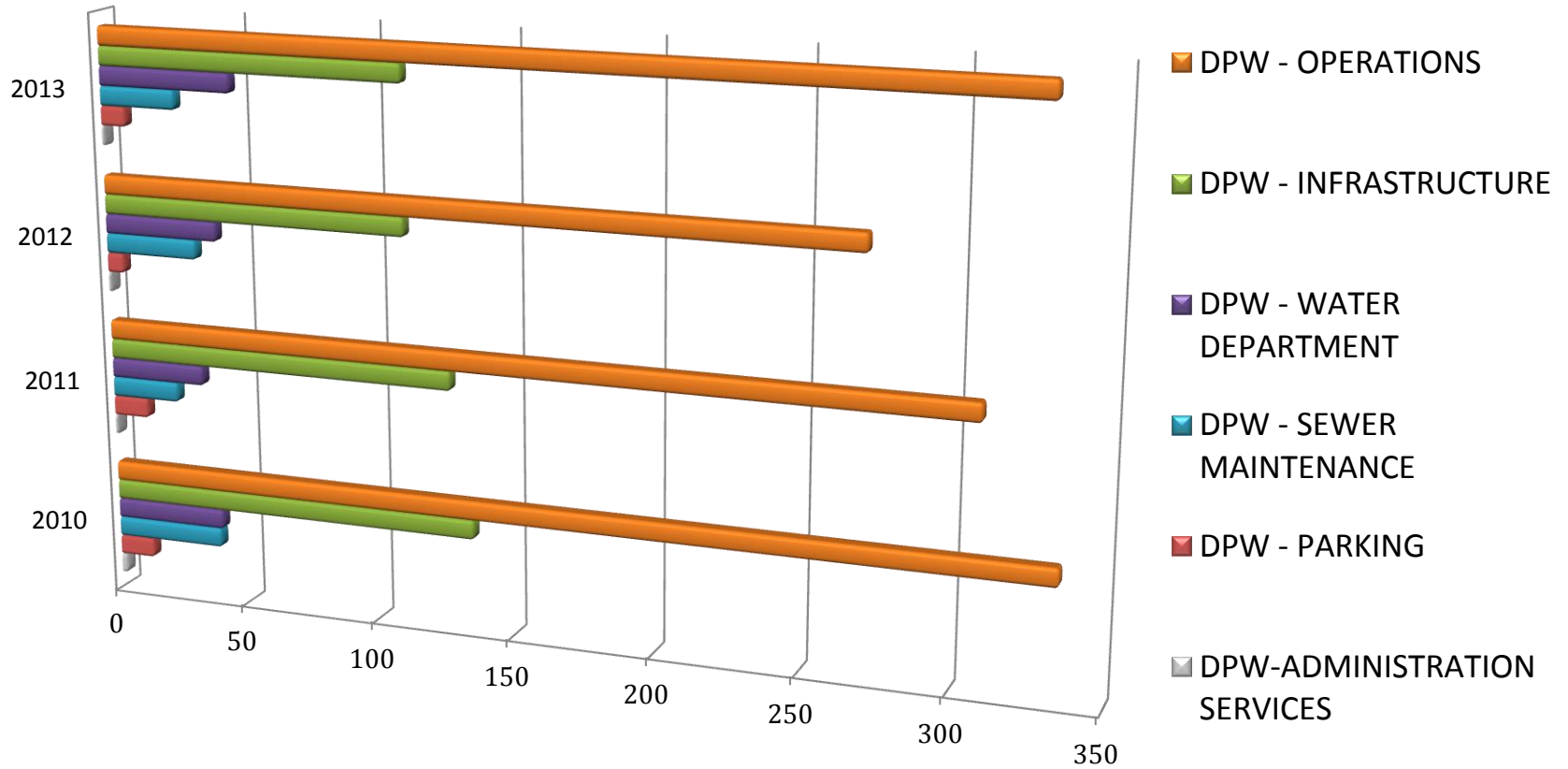
-  Greenfield Tank OOS
-  Pressure District Increase 2010 (18 main breaks within pressure change area, 35 main breaks outside)
-  Pressure District Increase 2012 (12 main breaks within pressure change area, 30 main breaks outside)
-  Howard Plant OOS 2014

- Water Distribution injuries increase with the increase of water main breaks

DPW Water Works Serious Claims

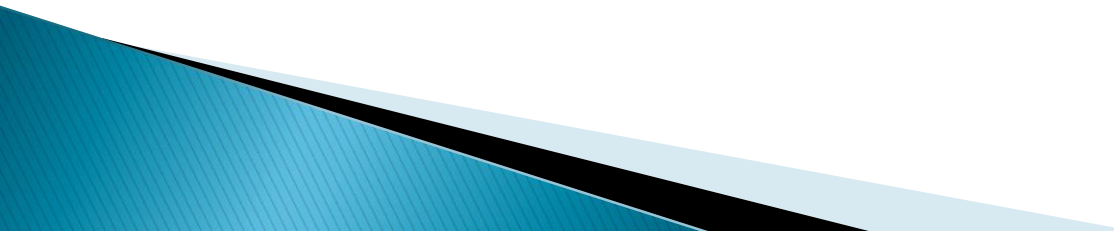


DPW Total Serious Claims - Divisions



¹Days Away, Restriction, or Transfer - **Definition of DART Cases** involve days away from work, days of restricted work activity, and/or days of job transfer.

✓ Department Initiatives/Internal Factors

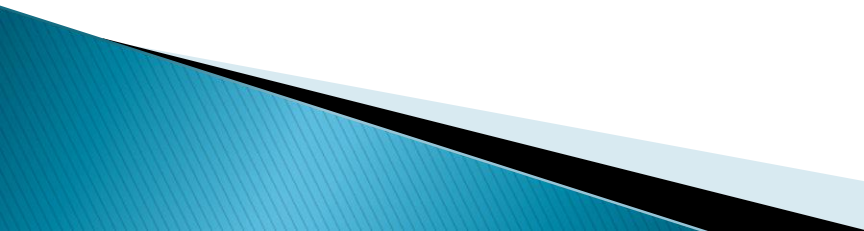
- ▶ Confined Space Policy
 - ▶ Accident/Incident Investigation Training
 - ▶ Foot Care
 - ▶ Liquid Oxygen & Ammonia Training
 - ▶ Globally Harmonized System (GHS Standard) Training
 - ▶ Beta Tested Investigation Application
 - ▶ One Arm Collection Trucks
 - ▶ Leadership Participation
- 

4. Accident Investigation

▶ Accident/Injury Investigation Protocols & Procedures

- Medical Attention if required
- Report to Supervisor/Safety & fill out EB49
- Forward medical documentation to Safety/Complete App
- Safety will review, process & forward information to DER

▶ Safety Audit/Investigation Outcomes

- Training on Accident Investigation
 - Review of injuries resulting in change of policies or discipline
 - Commendations to employees who reacted during emergencies which resulted in potentially saving lives
- 

5. Transitional Duty Program

2013 Days of Transitional Duty

DEPARTMENT	EMPLOYEES	DAYS ON TD
Sanitation / Fleet	77	2521
Forestry	31	823
Water	20	403
Infrastructure	27	1209
Parking	1	1.5
Totals	156	4957.5

2012 Days of Transitional Duty

DEPARTMENT	EMPLOYEES	DAYS ON TD
Sanitation / B&F	68	2048
Forestry	21	656
Water	9	429
Infrastructure	21	495
Parking	2	50
Totals	121	3678

2011 (as of 5/9/11) Days of Transitional Duty

DEPARTMENT	EMPLOYEES	DAYS ON TD
Sanitation / B&F	38	793
Forestry	10	83
Water	4	52
Infrastructure	13	123
Parking	0	0
Totals	65	1051

6. Safety Goals & Objectives

2014 Safety Goals & Action Step(s)	Goal Outcome(s)	Completion Date	Tracking & Completion	Impact or relevance to safety and/or workplace injuries
Review & update confined space equipment in Sewer Department	Dispose all obsolete equipment & update training	December 2014	Safety Dept.	Updated equipment & training ensures compliance with federal regulations and assists in elimination of potential hazards
Further Implement DPW Athlete Program (including exploring the potential of an on-site PT Program in conjunction with DER)	To transition from a concept to a pilot program at Electrical Services	July 2014	Safety Dept. Brian Hinkle	Focuses on early intervention & prevention of long term or chronic injuries.
Expand the DPW Injury & Incident Application	DPW wide uniformity in recording data for incidents & injuries	December 2014	Safety Dept.	Uniform, accurate, organized & detailed documentation of all injury/incidents DPW wide
Renew & coordinate training for Water Plants with Milwaukee Fire Department H.U.R.T. (Heavy Urban Rescue Team)	Increase awareness Continue communication	October 2014	Safety Dept. Roger Davidson	Exercise emergency operations procedures
Safety Blitz – Mass impromptu safety check done by Safety & Field Supervisors at various city locations & time frames	To show solidarity between safety & management on safety work rules	December 2014	Safety Dept.	Jointly enforce safety rules in a uniform manner
Expansion of the Transitional Duty Program positions	To have more placement opportunities for injured employees	December 2014	Safety Dept.	Enables a broader spectrum to meet work restrictions on an as needed base
Increase our networking with outside vendors	Object is to expose employees to as many PPE related outlets as possible	December 2014	Safety Dept.	Affords our employees with the latest updates in technology in cold/hot weather gear for private purchase
Rear Load Container condition Audit	To obtain updates on the condition of all boxes	December 2014	Safety Dept. Eunice Thomas	Reduce exposure to potential hazards to route personnel of boxes in need of repair