



**STATE/MUNICIPAL  
MAINTENANCE  
AGREEMENT**

Date: October 20, 2022  
ID: 1228-22-70  
Road Name: IH 43  
Limits: BROWN STREET TO CAPITOL DRIVE  
County: Milwaukee

The signatory **City of Milwaukee**, hereinafter called the Municipality, through its undersigned duly authorized officers or officials, hereby requests the State of Wisconsin Department of Transportation, hereinafter called the State, to initiate and affect this agreement to include the associated maintenance responsibilities hereinafter described.

The authority for the Municipality to enter into this agreement with the State is provided by Section 84.07(1) of the Statutes. Wisconsin statutes, Wisconsin Administrative Code, and State policy serve as the defining documents for State Highway maintenance responsibilities.

**DESCRIPTION OF FACILITY:**

**Facility description upon completion of State project – As determined by project ID 1228-22-70**

This request shall constitute agreement between the Municipality and the State; is subject to the terms and conditions that follow (page 2); is made by the undersigned under proper authority to make such request for the designated Municipality and upon signature by the State, delivery to the Municipality and upon fully executed signature of associated, applicable State Municipal Financial Agreement for project 1228-22-70. The initiation and signature of the agreement will be subject to all the applicable federal and state regulations. No term or provision of neither the State/Municipal Maintenance Agreement nor any of its attachments may be changed, waived or terminated orally but only by an instrument in writing executed by both parties to the State/Municipal Maintenance Agreement.

Signed for and in behalf of the <b>City of Milwaukee</b> (Please sign in blue ink)	
Name (print)	Title: Commissioner
Signature	Date
Signed for and in behalf of the <b>State</b> (Please sign in blue ink)	
Name Brian Roper	Title <b>WisDOT SE Region Maintenance Chief</b>
Signature	Date

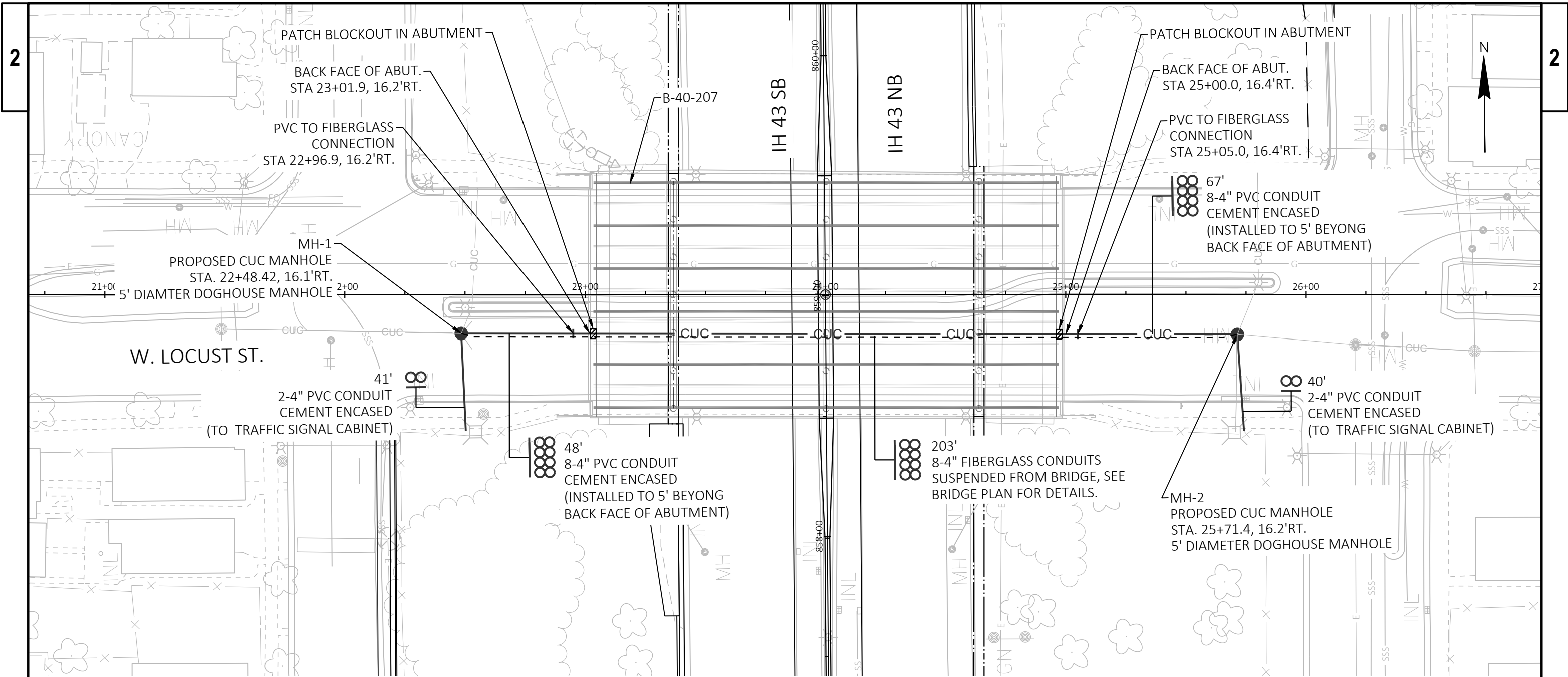
**TERMS AND CONDITIONS:**

1. In order to guarantee the Municipality’s foregoing agreements to maintain the facility to State standards, the Municipality, through its above duly authorized officers or officials, agrees and authorizes the State to set

off and withhold General Transportation Aids or monies otherwise due and payable by the State to the municipality, as determined by the State, for any maintenance the State must perform to the facility should the Municipality fail to comply with the agreement.

2. The State will not install any additional items, not necessitated for the safe and efficient flow of traffic, to a state highway facility without the Municipality agreeing to maintain those items. The State is responsible for maintaining the through travel way of any given highway facility under the State's jurisdiction including:
  - (a) Signing and pavement marking necessitated for the safe and efficient flow of traffic except those items listed in #3.
  - (b) Permitting authority of utilities and access control on all State Trunk, US and Interstate Highways.
3. The Municipality shall at its own cost and expense maintain all portions within the specified limits of this agreement that lie within its jurisdiction for such maintenance through statutory requirements in a manner satisfactory to the State and shall make ample provision for such maintenance each year to include:
  - (a) The energy, operation, repair and replacement of traffic signals and associated street lighting required for the signalized intersections within the limits of this agreement.
  - (b) Maintain and accept responsibility for the following as applicable to this agreement:
    1. Other (please identify) CUC Utility (see attachment 1 for reference)
4. The Municipality will coordinate with the State to obtain any necessary Work on Right-of-Way Permits for maintenance performed on or within the state highway facility or state right-of-way.
5. This agreement does not remove the current municipal maintenance responsibility.
6. The State or Municipality may request an amendment to this agreement to include specific features later requested by the Municipality throughout the design process.
7. Upon completion of construction project, 1228-22-70, the Municipality will assume all afore mentioned maintenance responsibilities.

# Attachment 1



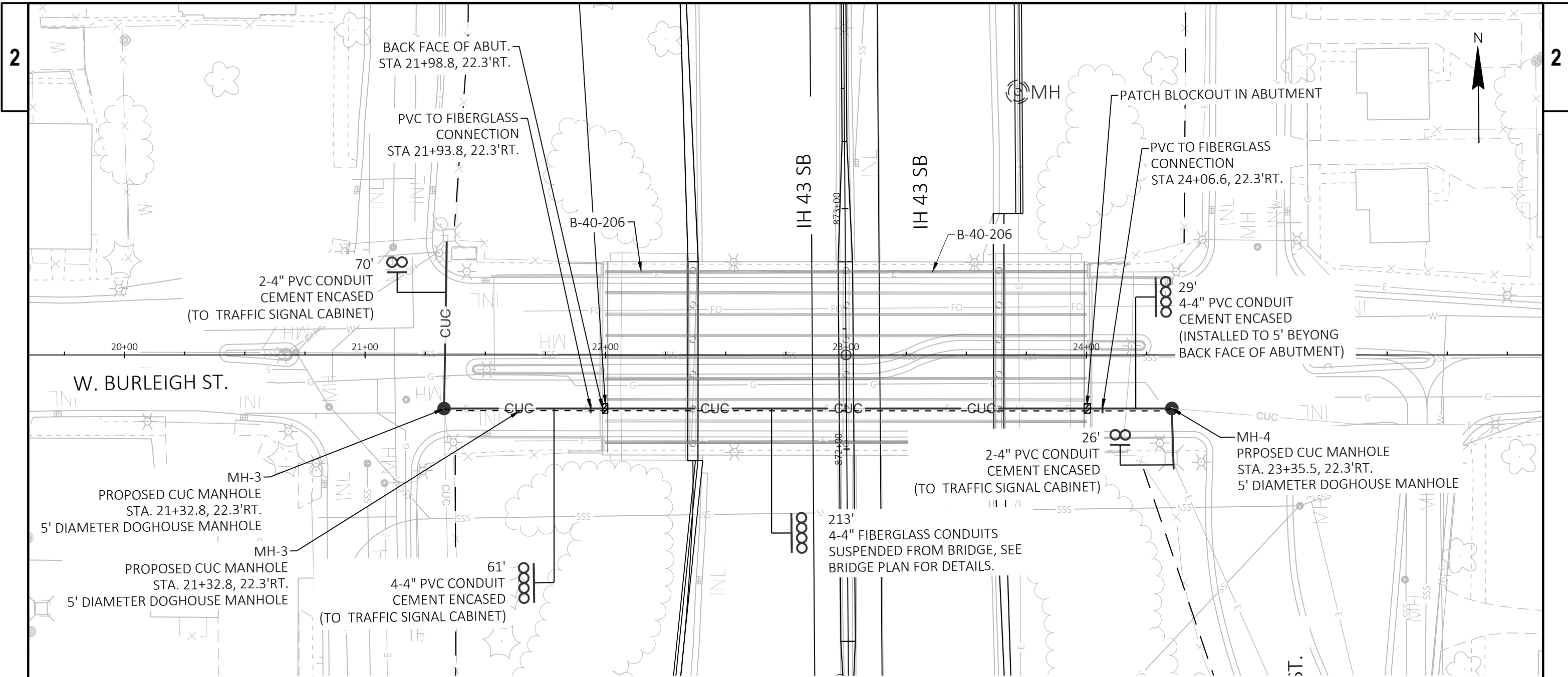
**NOTES:**

- 1) CONSTRUCTION STAKING FOR THE CITY UNDERGROUND CONDUIT (CUC) FACILITIES IS TO BE INCLUDED IN AND PAID FOR UNDER THE BID ITEM 650.8500 CONSTRUCTION STAKING ELECTRICAL INSTALLATION.
- 2) THE LOCATION OF THE EXISTING AND PROPOSED UTILITY INSTALLATION AS SHOWN ON THE PLANS IS APPROXIMATE. THERE MAY BE OTHER UTILITY INSTALLATION WITHIN PROJECT AREA WHICH ARE NOT SHOWN.
- 3) THE LOCATION OF THE EXISTING AND PROPOSED UTILITY INSTALLATIONS SHALL BE FIELD VERIFIED BY CONTRACTOR. DIMENSIONS SHOWN ARE TO THE CENTER OF MANHOLE, DUCT PACKAGE OR UTILITY.
- 4) DIMENSIONS SHOWN ARE TO THE CENTER OF MANHOLE, DUCT PACKAGE OR UTILITY.
- 5) MAINTAIN A STANDARD DEPTH OF 39-INCH BETWEEN FINISHED GRADE AND TOP OF CONDUIT.
- 6) REMOVE ABANDONED CONDUIT FROM MANHOLE WALL AND INSTALL THE PROPOSED CONDUIT INTO THE MANHOLE AT THE SAME LOCATION.
- 7) REMOVE ABANDONED CONDUIT AS NEEDED FOR PROPOSED INSTALLATION.
- 8) ATTACHED PROPOSED 4" PVC TO EXISTING DUCTS USING APPROPRIATE ADAPTORS.

**LEGEND**

	CUC	PROPOSED 4-INCH CENEPT ENCASED NONMETALLIC CONDUIT, NUMBER OF RUNS AS NOTED.
		PROPOSED CUC MANHOLE
	CUC	EXISTING CONDUIT
		EXISTING MANHOLE
		ABANDONED CONDUIT



SHEET 1 OF 8

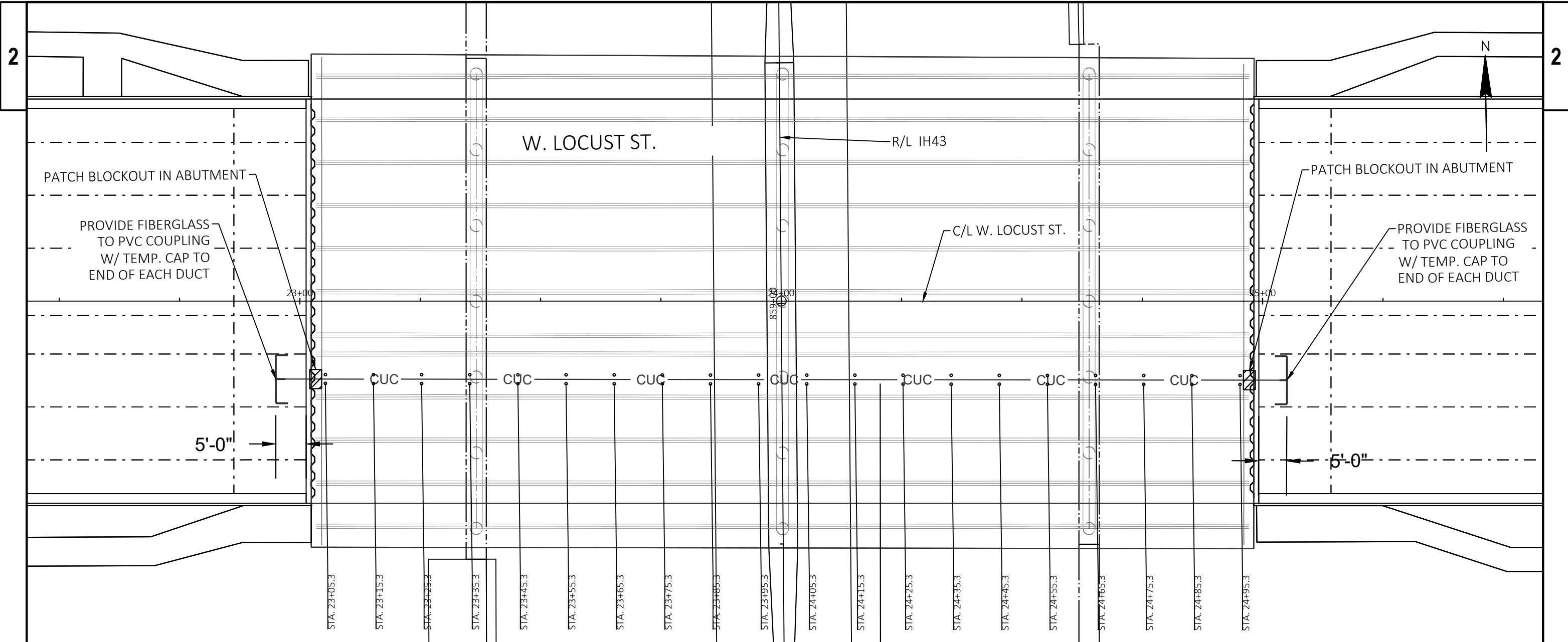


**NOTES:**

- 1) CONSTRUCTION STAKING FOR THE CITY UNDERGROUND CONDUIT (CUC) FACILITIES IS TO BE INCLUDED IN AND PAID FOR UNDER THE BID ITEM 650.8500 CONSTRUCTION STAKING ELECTRICAL INSTALLATION.
- 2) THE LOCATION OF THE EXISTING AND PROPOSED UTILITY INSTALLATION AS SHOWN ON THE PLANS IS APPROXIMATE. THERE MAY BE OTHER UTILITY INSTALLATION WITHIN PROJECT AREA WHICH ARE NOT SHOWN.
- 3) THE LOCATION OF THE EXISTING AND PROPOSED UTILITY INSTALLATIONS SHALL BE FIELD VERIFIED BY CONTRACTOR.
- 4) DIMENSIONS SHOWN ARE TO THE CENTER OF MANHOLE, DUCT PACKAGE OR UTILITY.
- 5) MAINTAIN A STANDARD DEPTH OF 39-INCH BETWEEN FINISHED GRADE AND TOP OF CONDUIT.
- 6) REMOVE ABANDONED CONDUIT FROM MANHOLE WALL AND INSTALL THE PROPOSED CONDUIT INTO THE MANHOLE AT THE SAME LOCATION.
- 7) REMOVE ABANDONED CONDUIT AS NEEDED FOR PROPOSED INSTALLATION.
- 8) ATTACHED PROPOSED 4" PVC TO EXISTING DUCTS USING APPROPRIATE ADAPTORS.

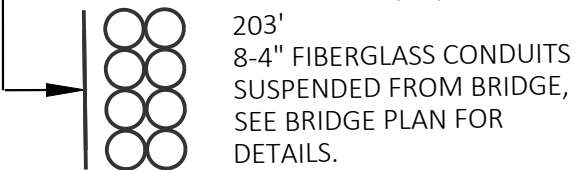
**LEGEND**

	<b>CUC</b>		PROPOSED 4-INCH CENEBT ENCASED NONMETALLIC CONDUIT, NUMBER OF RUNS AS NOTED.  PROPOSED CUC MANHOLE  EXISTING CONDUIT  EXISTING MANHOLE  ABANDONED CONDUIT
---------------------------------------------------------------------------------------	------------	---------------------------------------------------------------------------------------	-----------------------------------------------------------------------------------------------------------------------------------------------------------------------------------

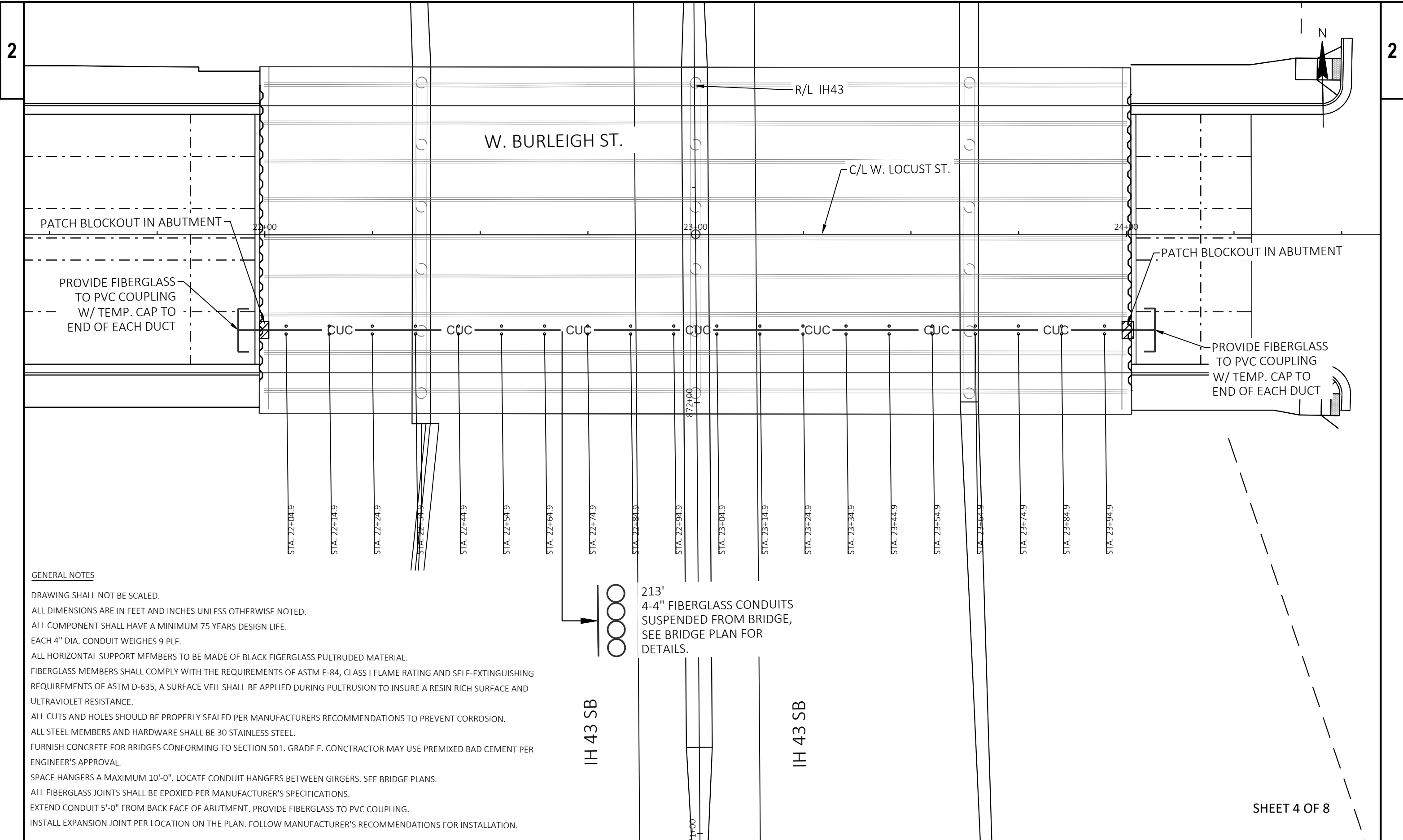


**GENERAL NOTES**

- DRAWING SHALL NOT BE SCALED.
- ALL DIMENSIONS ARE IN FEET AND INCHES UNLESS OTHERWISE NOTED.
- ALL COMPONENT SHALL HAVE A MINIMUM 75 YEARS DESIGN LIFE.
- EACH 4" DIA. CONDUIT WEIGHES 9 PLF.
- ALL HORIZONTAL SUPPORT MEMBERS TO BE MADE OF BLACK FIBERGLASS PULTRUDED MATERIAL.
- FIBERGLASS MEMBERS SHALL COMPLY WITH THE REQUIREMENTS OF ASTM E-84, CLASS I FLAME RATING AND SELF-EXTINGUISHING REQUIREMENTS OF ASTM D-635, A SURFACE VEIL SHALL BE APPLIED DURING PULTRUSION TO INSURE A RESIN RICH SURFACE AND ULTRAVIOLET RESISTANCE.
- ALL CUTS AND HOLES SHOULD BE PROPERLY SEALED PER MANUFACTURERS RECOMMENDATIONS TO PREVENT CORROSION.
- ALL STEEL MEMBERS AND HARDWARE SHALL BE 30 STAINLESS STEEL.
- FURNISH CONCRETE FOR BRIDGES CONFORMING TO SECTION 501. GRADE E. CONTRACTOR MAY USE PREMIXED BAD CEMENT PER ENGINEER'S APPROVAL.
- SPACE HANGERS A MAXIMUM 10'-0". LOCATE CONDUIT HANGERS BETWEEN GIRGERS. SEE BRIDGE PLANS.
- ALL FIBERGLASS JOINTS SHALL BE EPOXIED PER MANUFACTURER'S SPECIFICATIONS.
- EXTEND CONDUIT 5'-0" FROM BACK FACE OF ABUTMENT. PROVIDE FIBERGLASS TO PVC COUPLING.
- INSTALL EXPANSION JOINT PER LOCATION ON THE PLAN. FOLLOW MANUFACTURER'S RECOMMENDATIONS FOR INSTALLATION.



PROJECT NO: 1228-22-70	HWY: IH 43	COUNTY: MILWAUKEE	CITY UG CONDUIT (CUC) - W. LOCUST ST. BRIDGE	SHEET	<b>E</b>
------------------------	------------	-------------------	----------------------------------------------	-------	----------



**GENERAL NOTES**

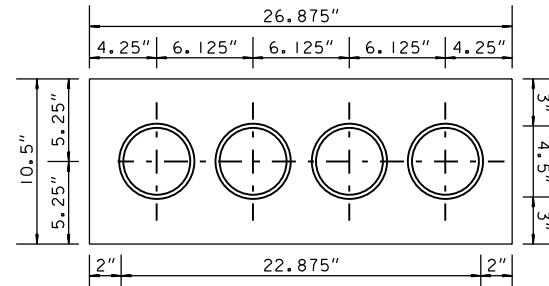
- DRAWING SHALL NOT BE SCALED.
- ALL DIMENSIONS ARE IN FEET AND INCHES UNLESS OTHERWISE NOTED.
- ALL COMPONENT SHALL HAVE A MINIMUM 75 YEARS DESIGN LIFE.
- EACH 4" DIA. CONDUIT WEIGHES 9 PLF.
- ALL HORIZONTAL SUPPORT MEMBERS TO BE MADE OF BLACK FIBERGLASS PULTRUDED MATERIAL.
- FIBERGLASS MEMBERS SHALL COMPLY WITH THE REQUIREMENTS OF ASTM E-84, CLASS I FLAME RATING AND SELF-EXTINGUISHING REQUIREMENTS OF ASTM D-635, A SURFACE VEIL SHALL BE APPLIED DURING PULTRUSION TO INSURE A RESIN RICH SURFACE AND ULTRAVIOLET RESISTANCE.
- ALL CUTS AND HOLES SHOULD BE PROPERLY SEALED PER MANUFACTURERS RECOMMENDATIONS TO PREVENT CORROSION.
- ALL STEEL MEMBERS AND HARDWARE SHALL BE 30 STAINLESS STEEL.
- FURNISH CONCRETE FOR BRIDGES CONFORMING TO SECTION 501. GRADE E. CONTRACTOR MAY USE PREMIXED BAD CEMENT PER ENGINEER'S APPROVAL.
- SPACE HANGERS A MAXIMUM 10'-0". LOCATE CONDUIT HANGERS BETWEEN GIRGERS. SEE BRIDGE PLANS.
- ALL FIBERGLASS JOINTS SHALL BE EPOXIED PER MANUFACTURER'S SPECIFICATIONS.
- EXTEND CONDUIT 5'-0" FROM BACK FACE OF ABUTMENT. PROVIDE FIBERGLASS TO PVC COUPLING.
- INSTALL EXPANSION JOINT PER LOCATION ON THE PLAN. FOLLOW MANUFACTURER'S RECOMMENDATIONS FOR INSTALLATION.

213'  
 4-4" FIBERGLASS CONDUITS  
 SUSPENDED FROM BRIDGE,  
 SEE BRIDGE PLAN FOR  
 DETAILS.

IH 43 SB

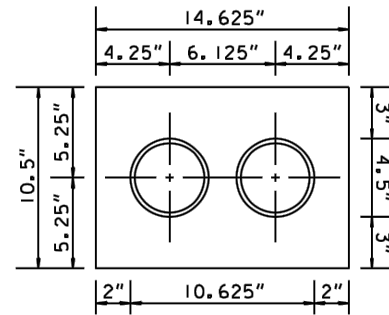
IH 43 SB

SHEET 4 OF 8



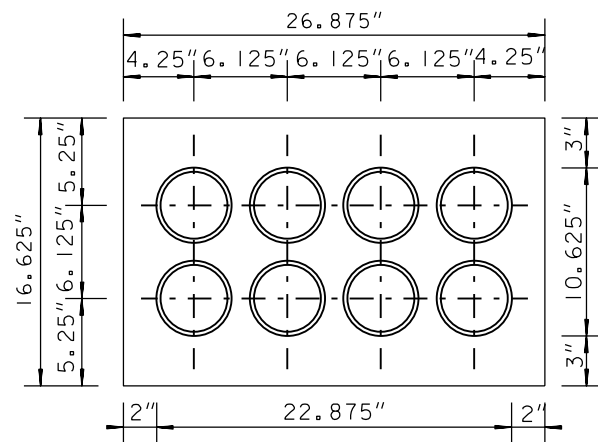
4-DUCT CROSS SECTION VIEW

N. T. S.



2-DUCT CROSS SECTION VIEW

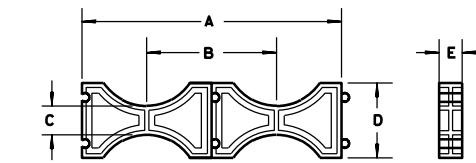
N. T. S.



8-DUCT CROSS SECTION VIEW

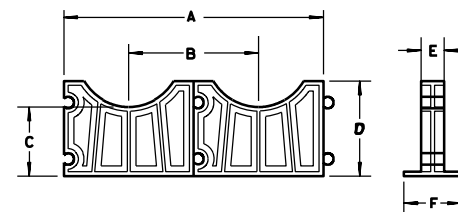
N. T. S.

COND.	3"	4"
A	10"	12 1/4"
B	5"	6 1/8"
C	1 1/2"	1 1/2"
D	5.13"	6.13"
E	1"	1"



INTERMEDIATE SPACER DETAIL

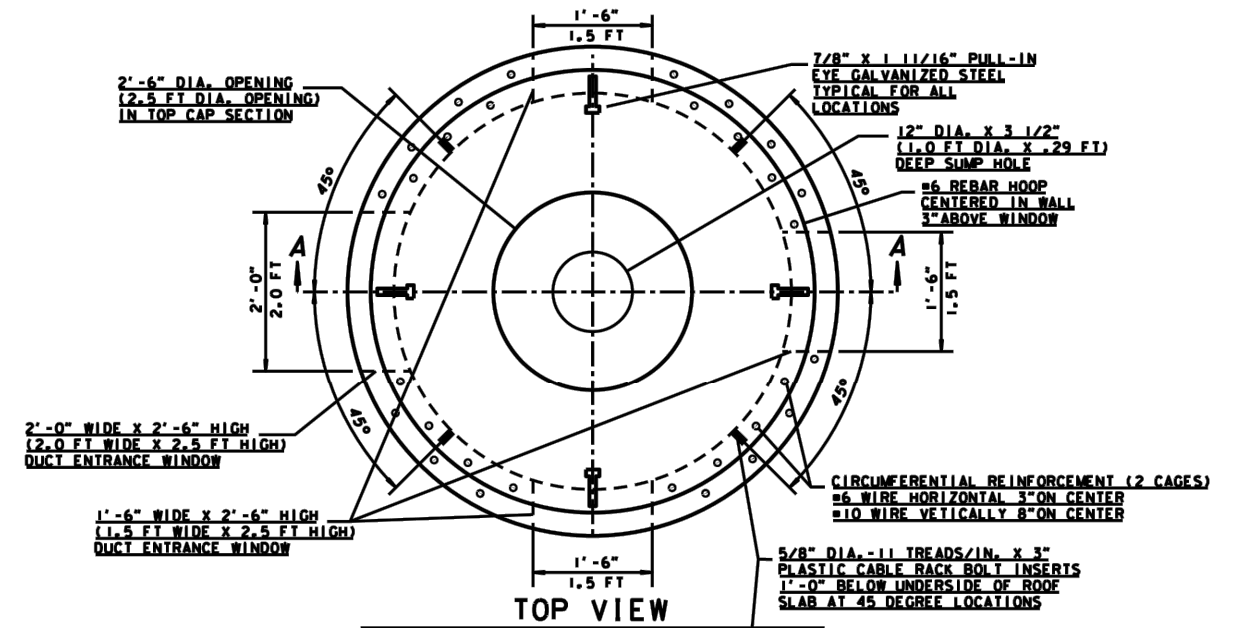
COND.	3"	4"
A	10 1/4"	12 1/4"
B	5.13"	6.13"
C	3"	3"
D	4 3/4"	5.31"
E	1"	1"
F	3"	3"



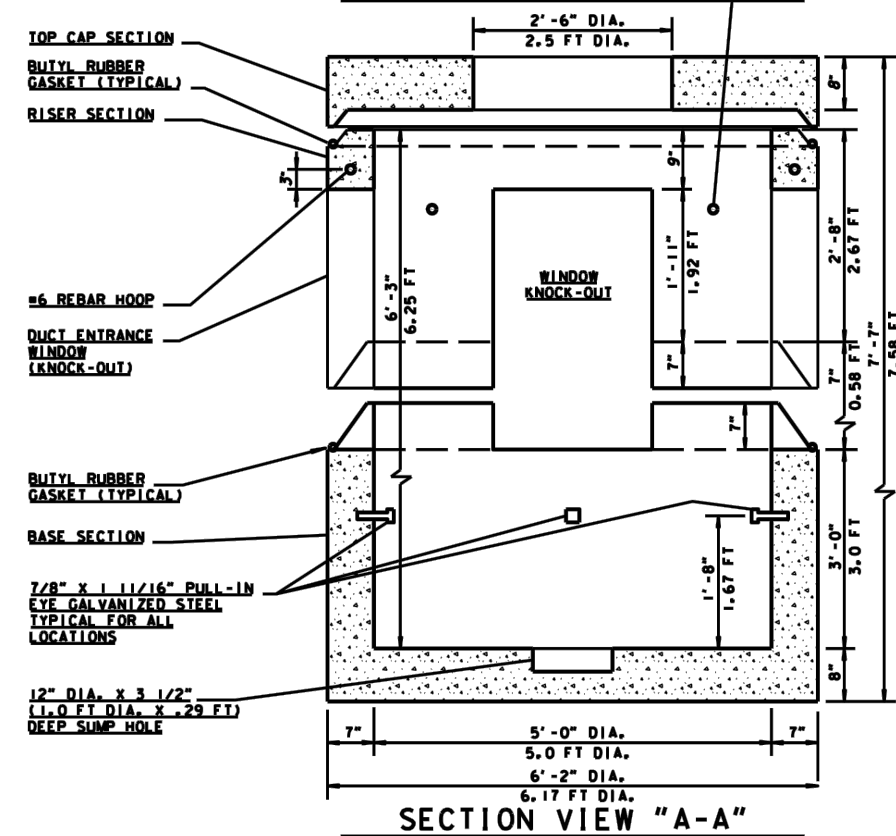
BASE SPACER DETAIL

INTERMEDIATE AND BASE SPACER DETAIL

N. T. S.



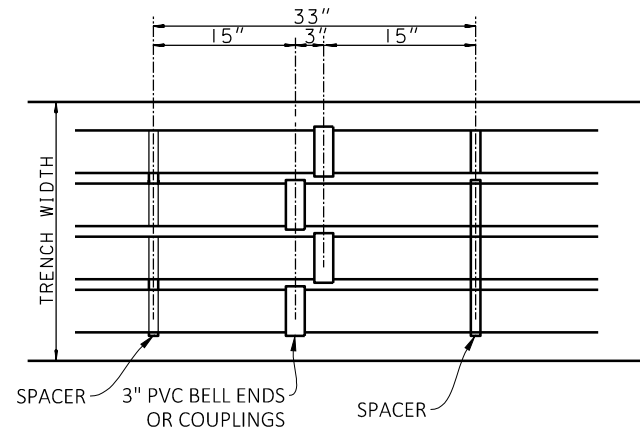
TOP VIEW



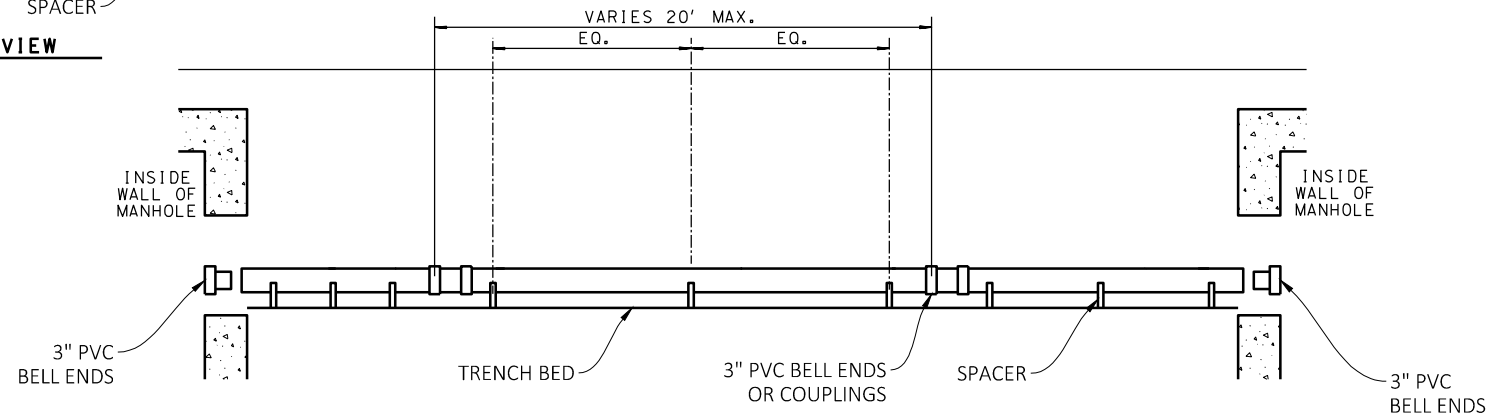
SECTION VIEW "A-A"

N. T. S.

5' DIAMETER "DOGHOUSE" TYPE CUC MANHOLE

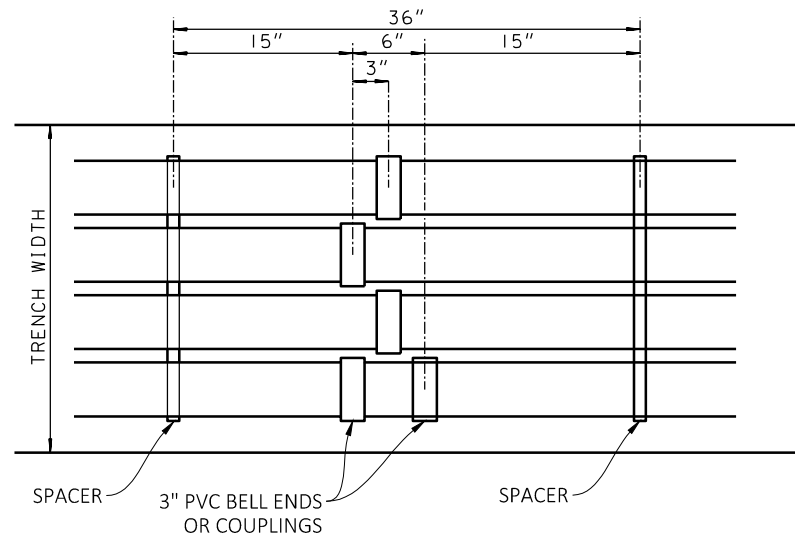


**PLAN VIEW**  
N. T. S.

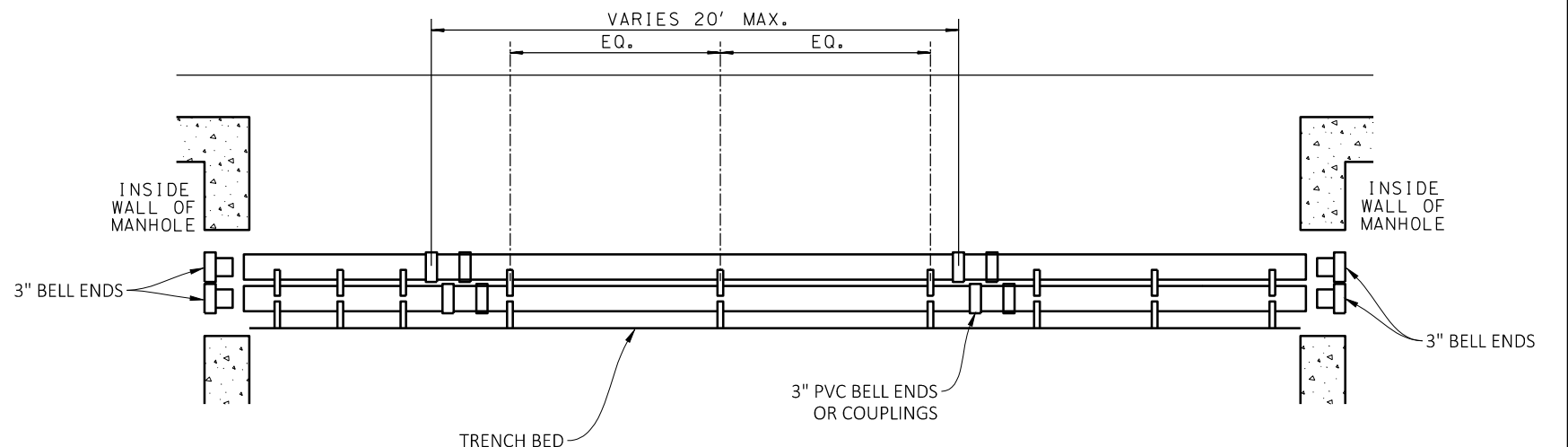


**SECTION VIEW**  
N. T. S.

DUCT INSTALLATION DETAIL



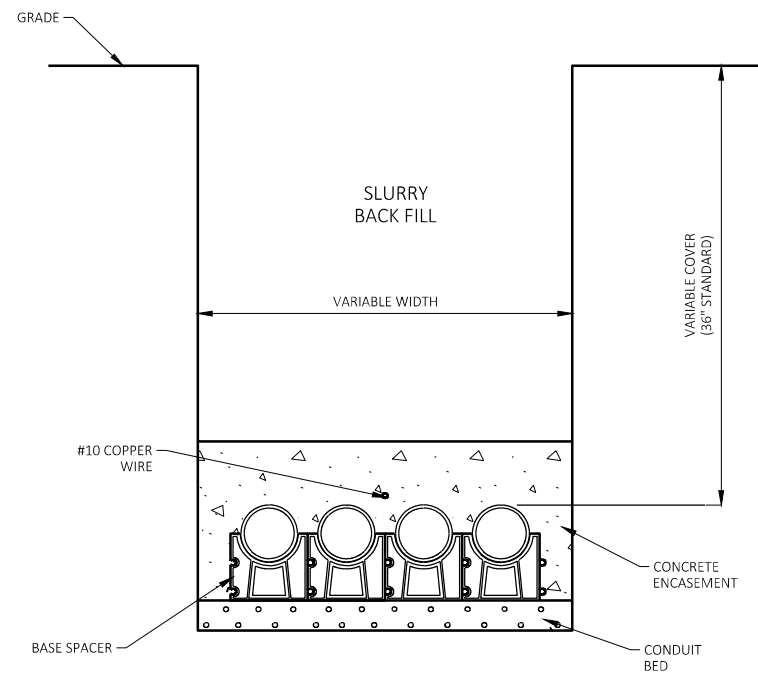
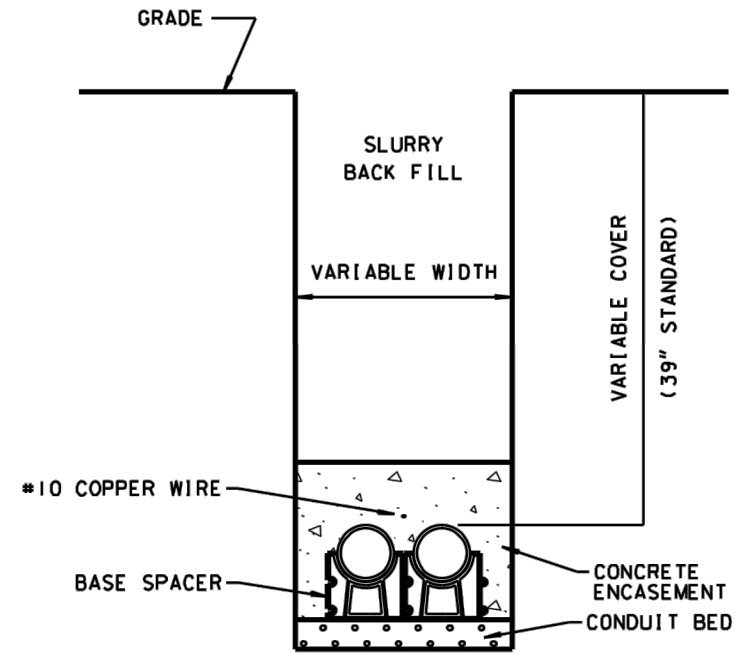
**PLAN VIEW**  
N. T. S.



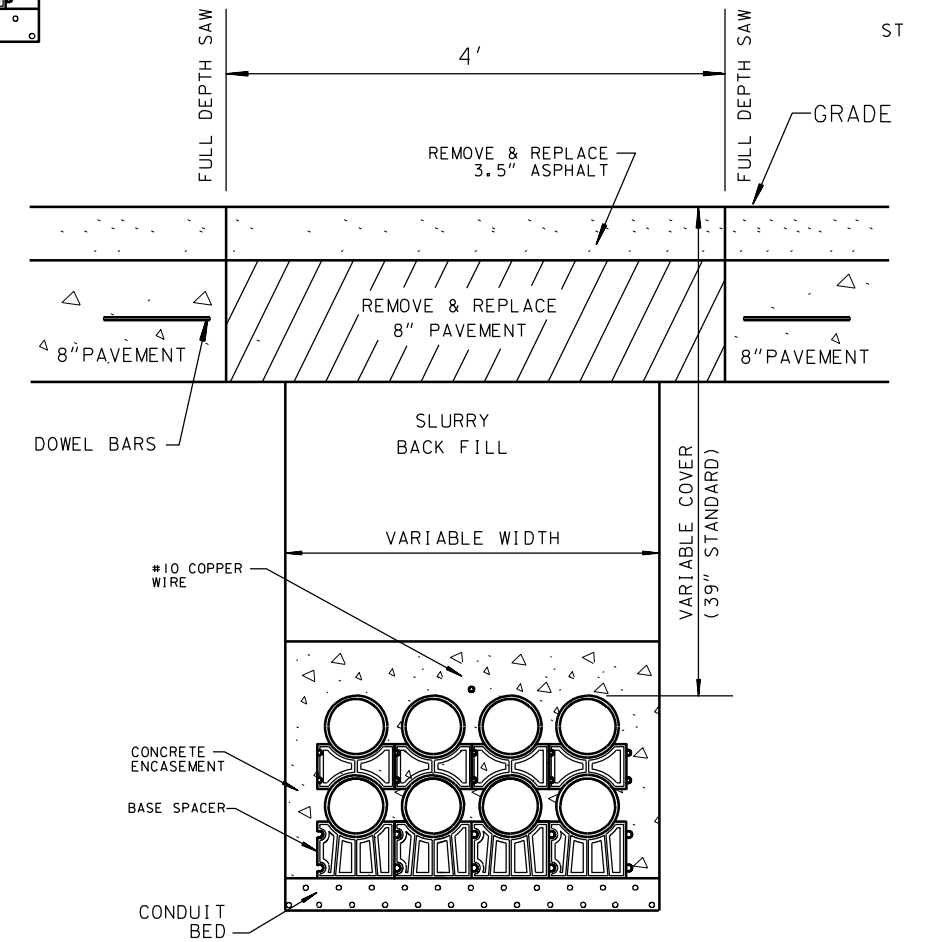
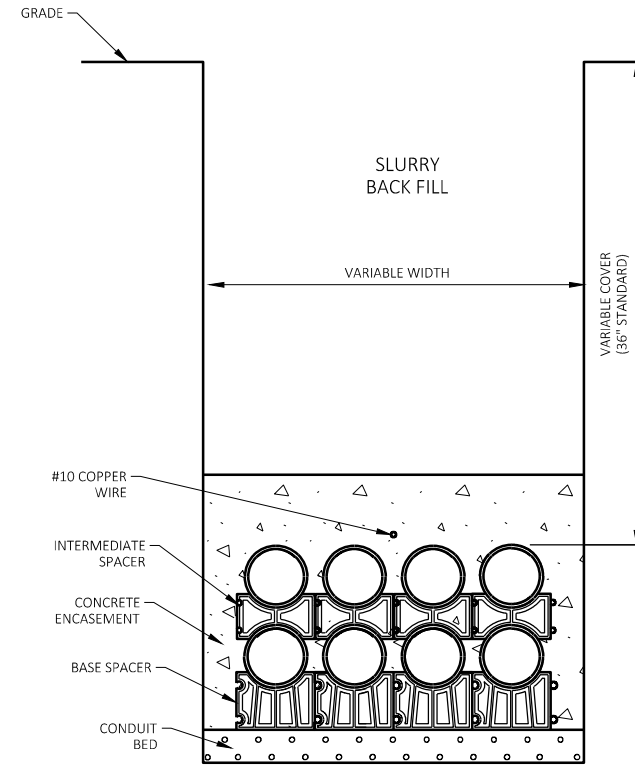
**SECTION VIEW**  
N. T. S.

DUCT INSTALLATION DETAIL

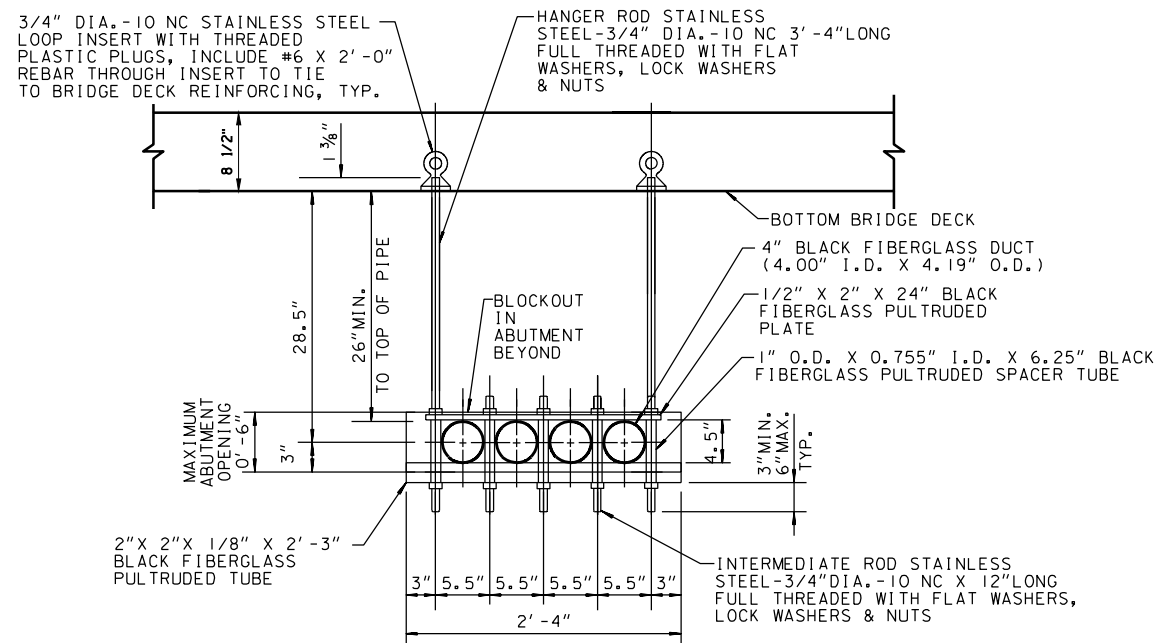




TRENCH AND 4-DUCT CROSS-SECTION VIEW  
N. T. S.

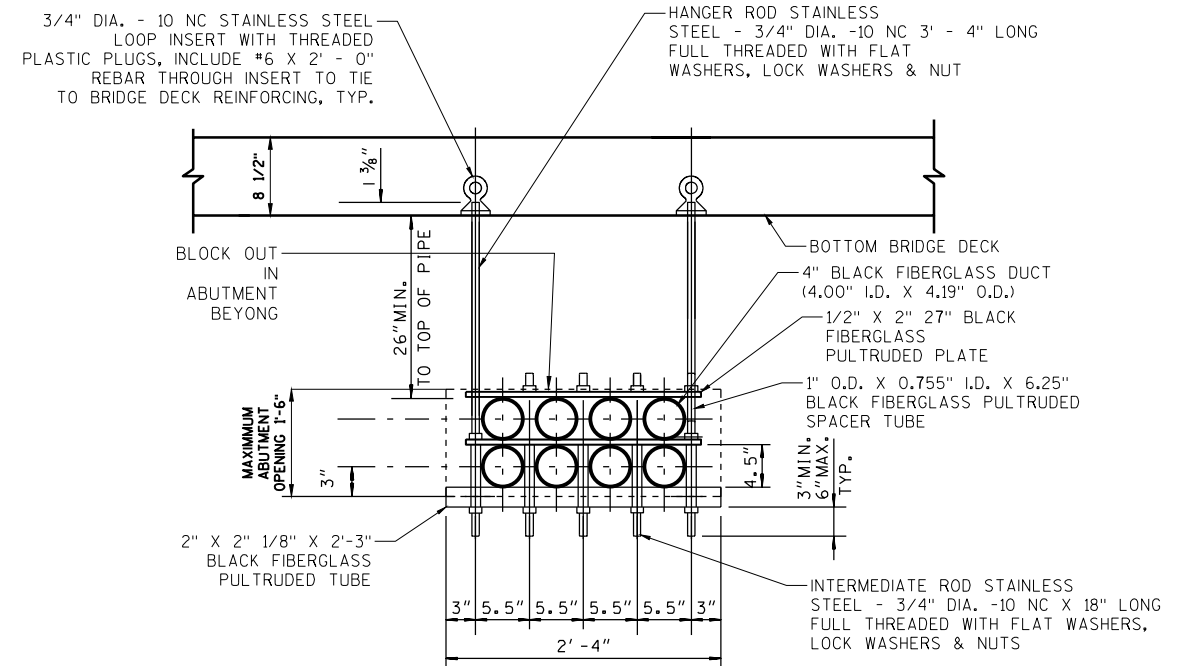


TRENCH AND 8-DUCT CROSS-SECTION VIEW  
N. T. S.



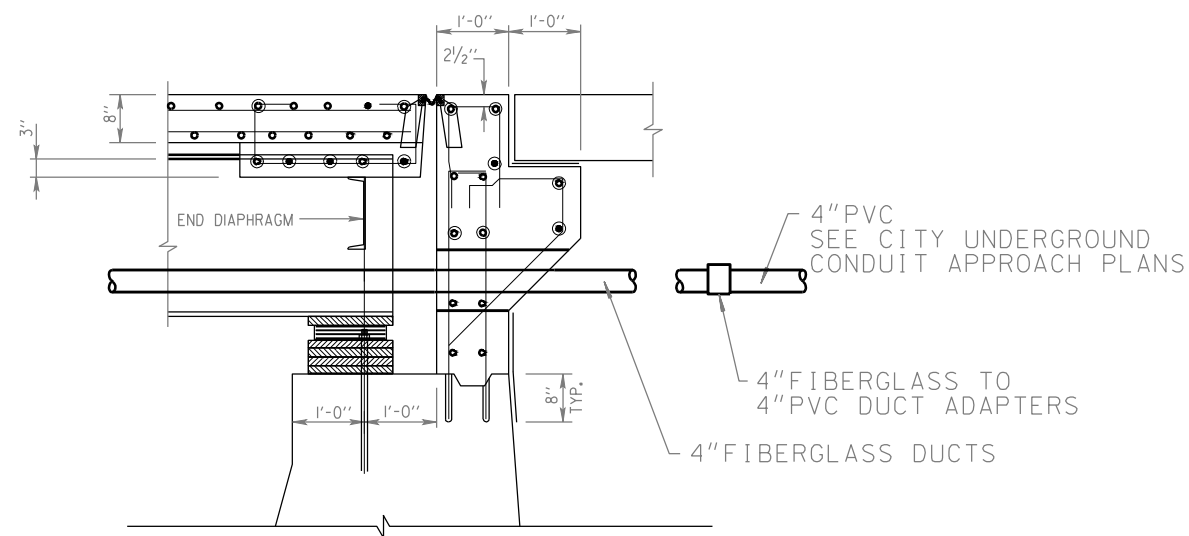
4-DUCT CITY COMMUNICATION HANGER PACKAGE DETAIL

THE CONTRACTOR SHALL FIELD VERIFY HANGER LENGTHS IN ORDER TO AVOID CONFLICTS WITH DIAPHRAM CROSSING.

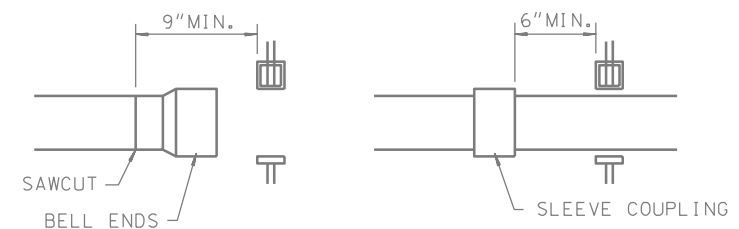


8-DUCT CITY COMMUNICATION HANGER PACKAGE DETAIL

THE CONTRACTOR SHALL FIELD VERIFY HANGER LENGTHS IN ORDER TO AVOID CONFLICTS WITH DIAPHRAM CROSSING.



ABUTMENT DETAIL



NOTES:  
A BELLED END OR COUPLING SHOULD BE NO CLOSER THAN 6" ON EITHER SIDE OF A SUPPORT AS SHOWN ABOVE. A TAPE MEASURE CAN BE USED TO PREDETERMINE THESE LOCATIONS AND THE CONDUIT CAN BE SAW CUT TO THE PROPER LENGTH BEFORE IT IS THREADED THROUGH THE HANGERS AS SHOWN ABOVE.

CLEARANCES FOR SLEEVE COUPLINGS AND BELL ENDS