



# Certificate of Appropriateness

Milwaukee Historic Preservation Commission/200 E. Wells Street/Milwaukee, WI 53202/phone 414-286-5712/fax 414-286-3004

**Property** 1104 W. HISTORIC MITCHELL ST. MITCHELL STREET HISTORIC DISTRICT  
**Description of work** Applicant proposes to install new sign "KIDDYLAND" on store front above front store window. The sign will be constructed of individual letters.  
**Date issued** 5/27/2016 PTS ID 111142 COA Kiddyland sign

In accordance with the provisions of Section 320-21 (11) and (12) of the Milwaukee Code of Ordinances, the Milwaukee Historic Preservation Commission has issued a certificate of appropriateness for the work listed above. The work was found to be consistent with preservation guidelines. The following conditions apply to this certificate of appropriateness:

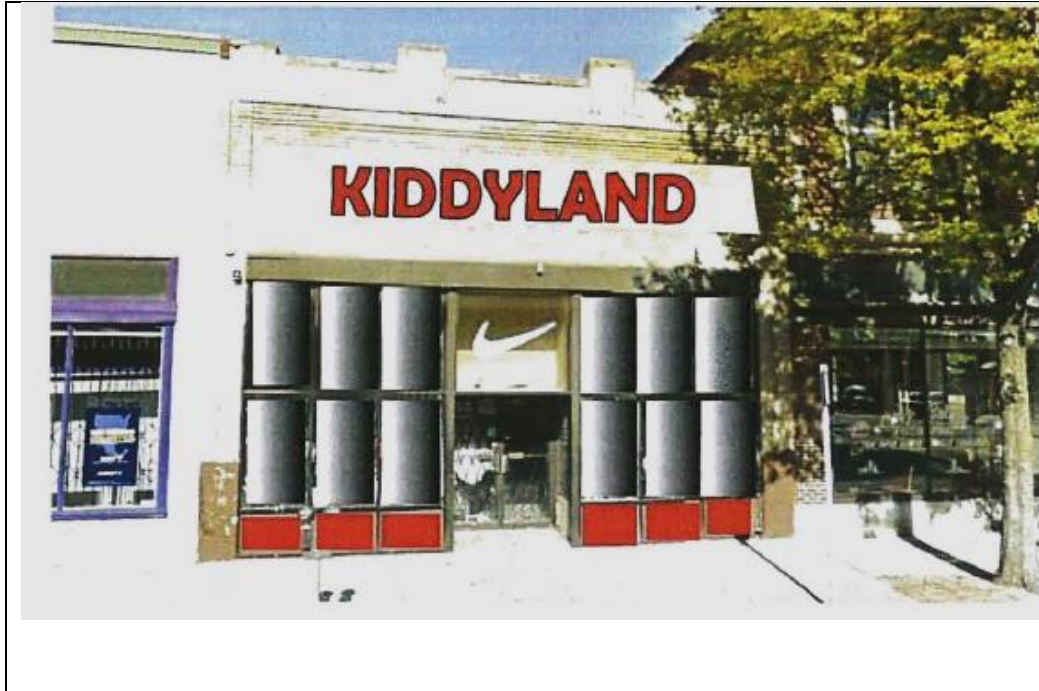
The work will be carried out as described.

All work must be done in a craftsman-like manner, and must be completed within one year of the date this certificate was issued. Staff must approve any changes or additions to this certificate before work begins. Work that is not completed in accordance with this certificate may be subject to correction orders or citations. If you require technical assistance, please contact Carlen Hatala of the Historic Preservation staff as follows: Phone: (414) 286-5722 Fax: (414) 286-3004 E-mail: carlen.chatal@milwaukee.gov.

If permits are required, you are responsible for obtaining them from the Milwaukee Development Center. If you have questions about permit requirements, please consult the Development Center's web site, [www.milwaukee.gov/build](http://www.milwaukee.gov/build), or call (414) 286-8210.

City of Milwaukee Historic Preservation Staff

Copies to: Development Center, Ald. Jose Perez, Contractor, Inspector Robert McInnes (286-2518)



NEW SIGN - LETTERS WILL HAVE RED FACES WITH LED LIGHTS INSIDE.  
LETTERS WILL BE 18" HIGH LIKE TRACK SPORTS BUT WITH KIDDYLAND FONT  
BLACK RETURNS