

GENERAL NOTES - ELEVATIONS

- SEE SPECIFICATION FOR MASONRY AND METAL PANEL TYPES INDICATED.
- FOR WINDOW TYPES / ASSEMBLIES, SEE SHEETS A405, A406, A407, & A408.
- WINDOW TYPE / ASSEMBLY SYMBOL.

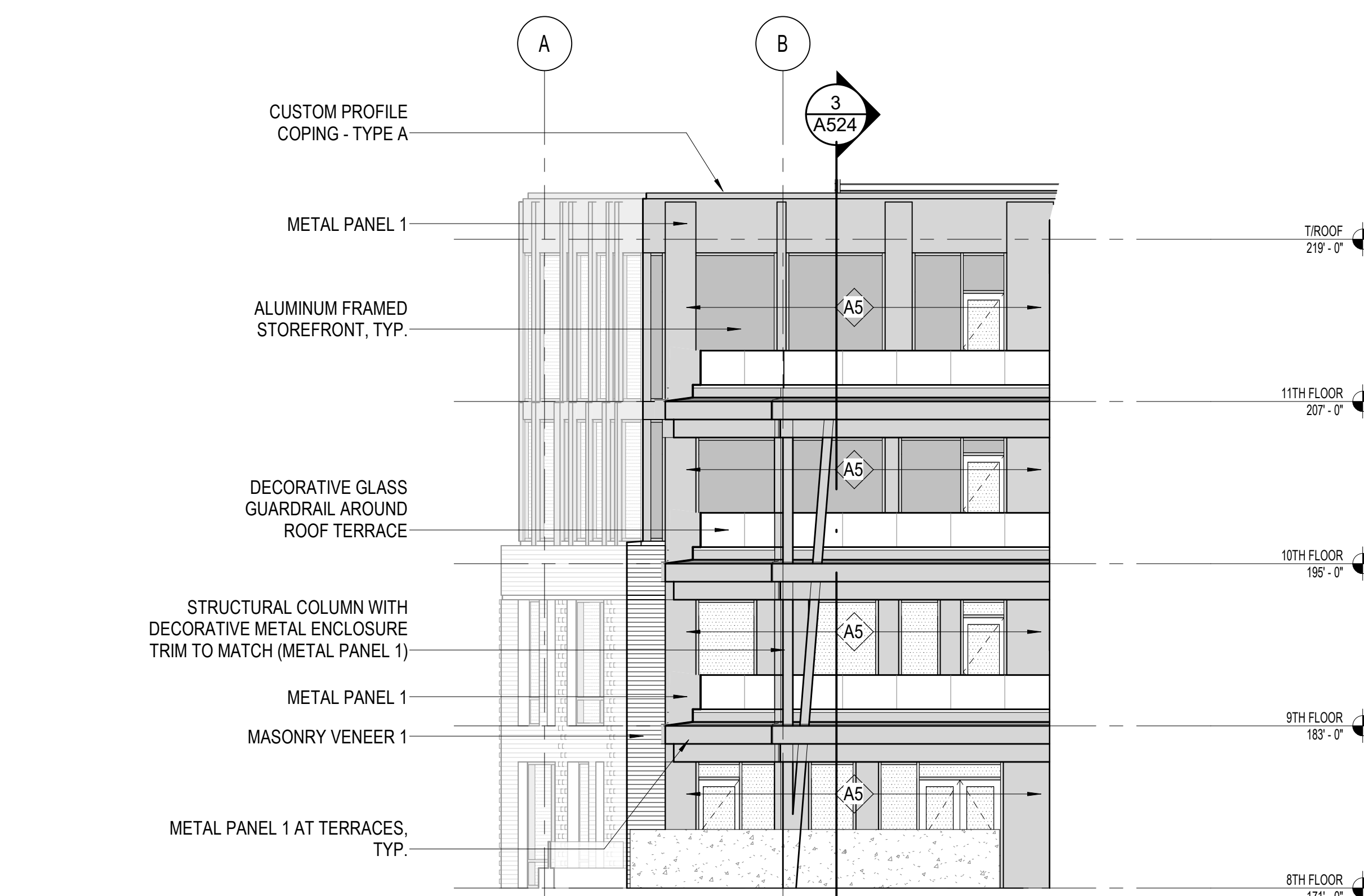
HURON BUILDING

511 NORTH BROADWAY
MILWAUKEE, WISCONSIN 53202
OWNER:
J. JEFFERS & COMPANY
225 EAST MICHIGAN STREET, SUITE 300
MILWAUKEE, WISCONSIN 53202

PROJECT NUMBER 172738.00

ISSUED FOR:
PLAN REVIEW 04-18-19

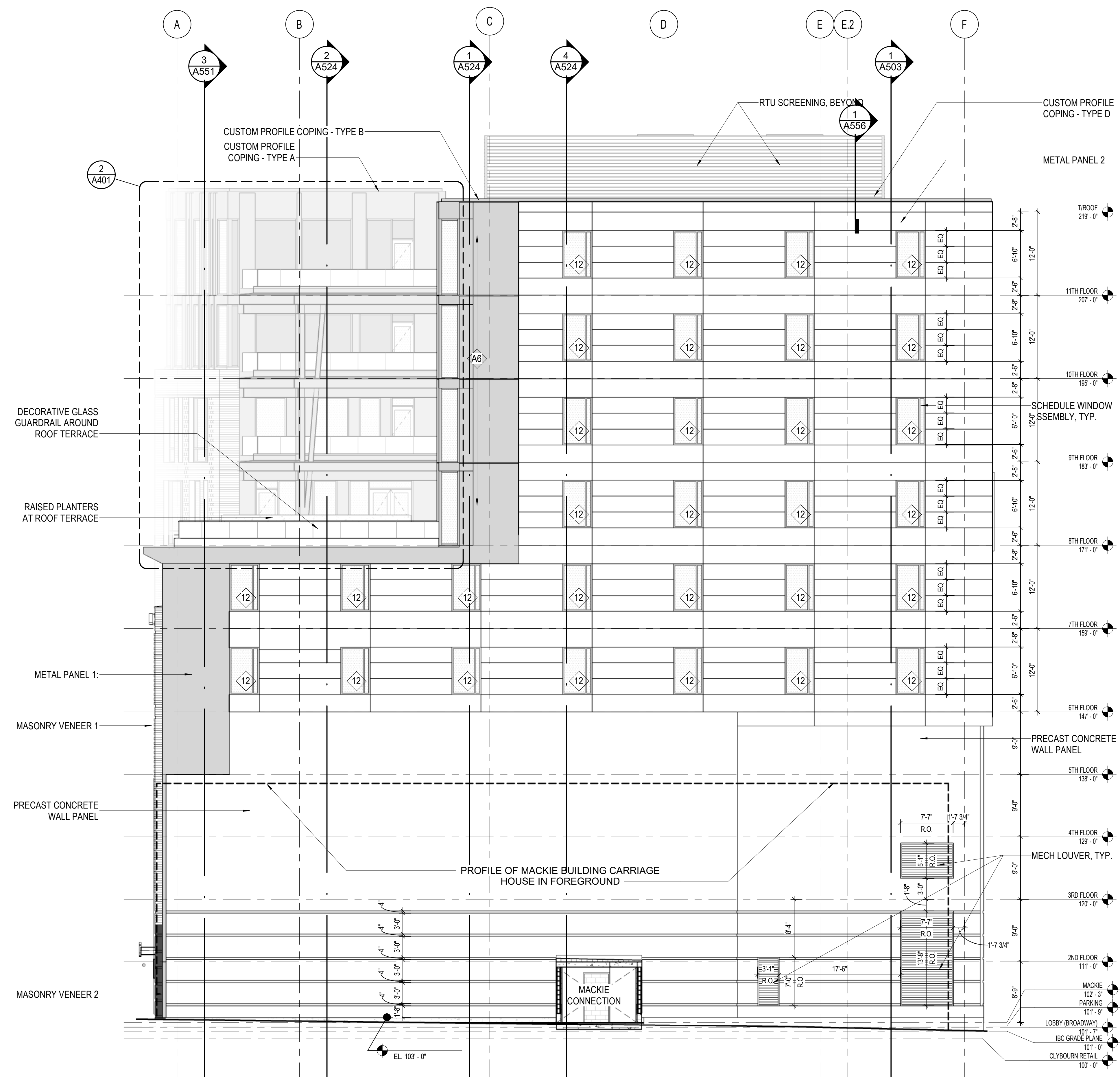
REVISION FOR:
NO. 3 DESCRIPTION DATE
08.01 08-06-19



2 PARTIAL NORTH ELEVATION - TERRACE
SCALE: 1/8" = 1'-0"



3 PARTIAL EAST ELEVATION - TERRACE
SCALE: 1/8" = 1'-0"



1 NORTH ELEVATION
SCALE: 1/8" = 1'-0"

DRAWN BY Author
CHECKED BY Checker

**BUILDING
ELEVATIONS**

GENERAL NOTES - ELEVATIONS

- SEE SPECIFICATION FOR MASONRY AND METAL PANEL TYPES INDICATED.
- FOR WINDOW TYPES / ASSEMBLIES, SEE SHEETS A405, A406, A407, & A408.
- ◊ WW - WINDOW TYPE / ASSEMBLY SYMBOL.

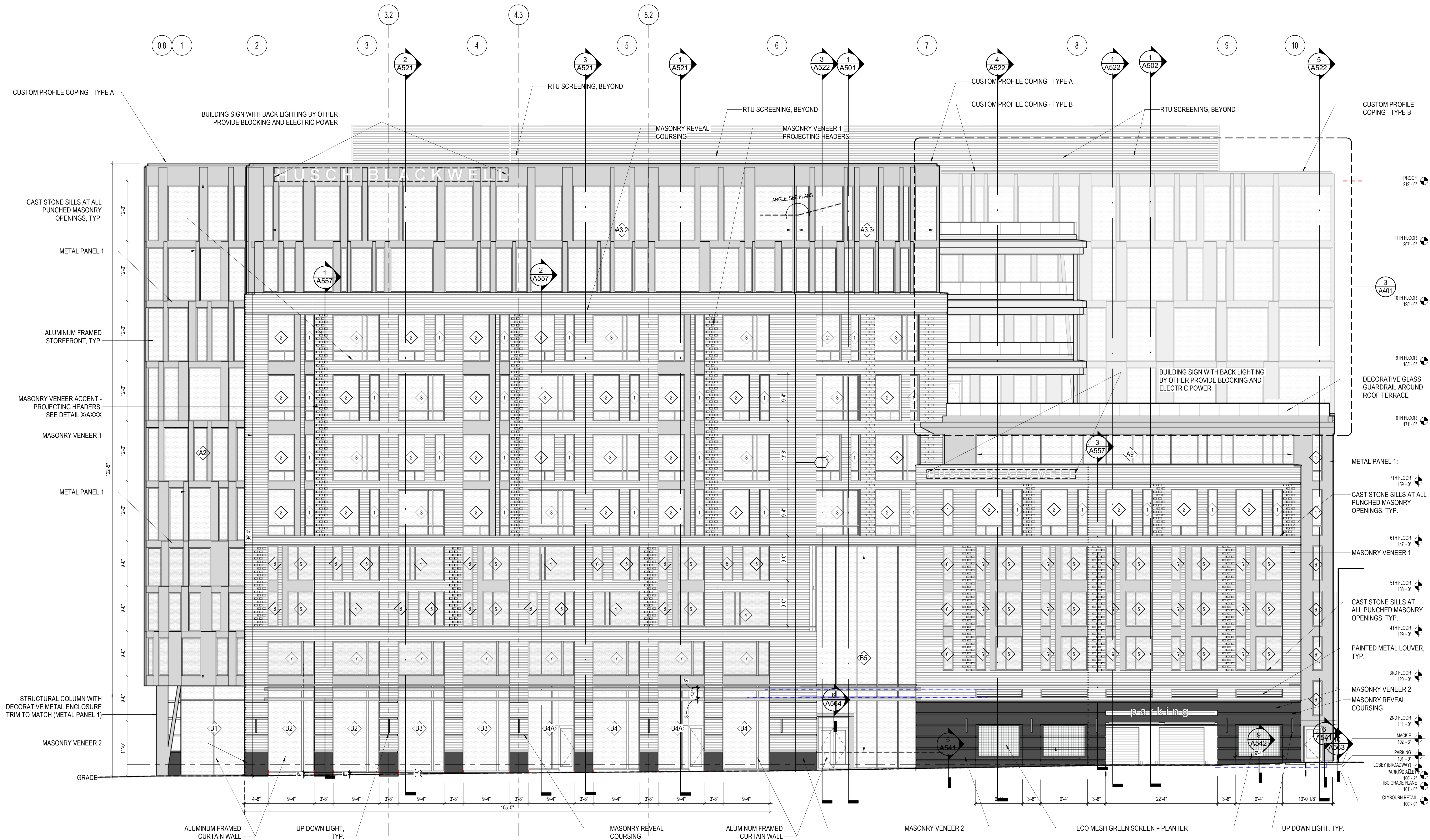
HURON BUILDING

511 NORTH BROADWAY
MILWAUKEE, WISCONSIN 53202
OWNER:
J. JEFFERS & COMPANY
225 EAST MICHIGAN STREET, SUITE 300
MILWAUKEE, WISCONSIN 53202

PROJECT NUMBER 172738.00

ISSUED FOR:
PLAN REVIEW 04-18-19

REVISION FOR:
NO. DESCRIPTION DATE




1 EAST ELEVATION
SCALE: 1/8" = 1'-0"

DRAWN BY Author
CHECKED BY Checker

**BUILDING
ELEVATIONS**

GENERAL NOTES - ELEVATIONS

1. SEE SPECIFICATION FOR MASONRY AND METAL PANEL TYPES INDICATED.
2. FOR WINDOW TYPES / ASSEMBLIES, SEE SHEETS A405, A406, A407, & A408.
3.  WINDOW TYPE / ASSEMBLY SYMBOL.

HURON BUILDING

511 NORTH BROADWAY
MILWAUKEE, WISCONSIN 53202

OWNER:
J. JEFFERS & COMPANY
225 EAST MICHIGAN STREET, SUITE 300
MILWAUKEE, WISCONSIN 53202

PROJECT NUMBER 172738.00

ISSUED FOR:
PLAN REVIEW 04-18-19

REVISION FOR:
NO. DESCRIPTION DATE



1 SOUTH ELEVATION
SCALE: 1/8" = 1'-0"

DRAWN BY Author
CHECKED BY Checker

**BUILDING
ELEVATIONS**

GENERAL NOTES - ELEVATIONS

- SEE SPECIFICATION FOR MASONRY AND METAL PANEL TYPES INDICATED.
- FOR WINDOW TYPES / ASSEMBLIES, SEE SHEETS A405, A406, A407, & A408.
- WINDOW TYPE / ASSEMBLY SYMBOL.

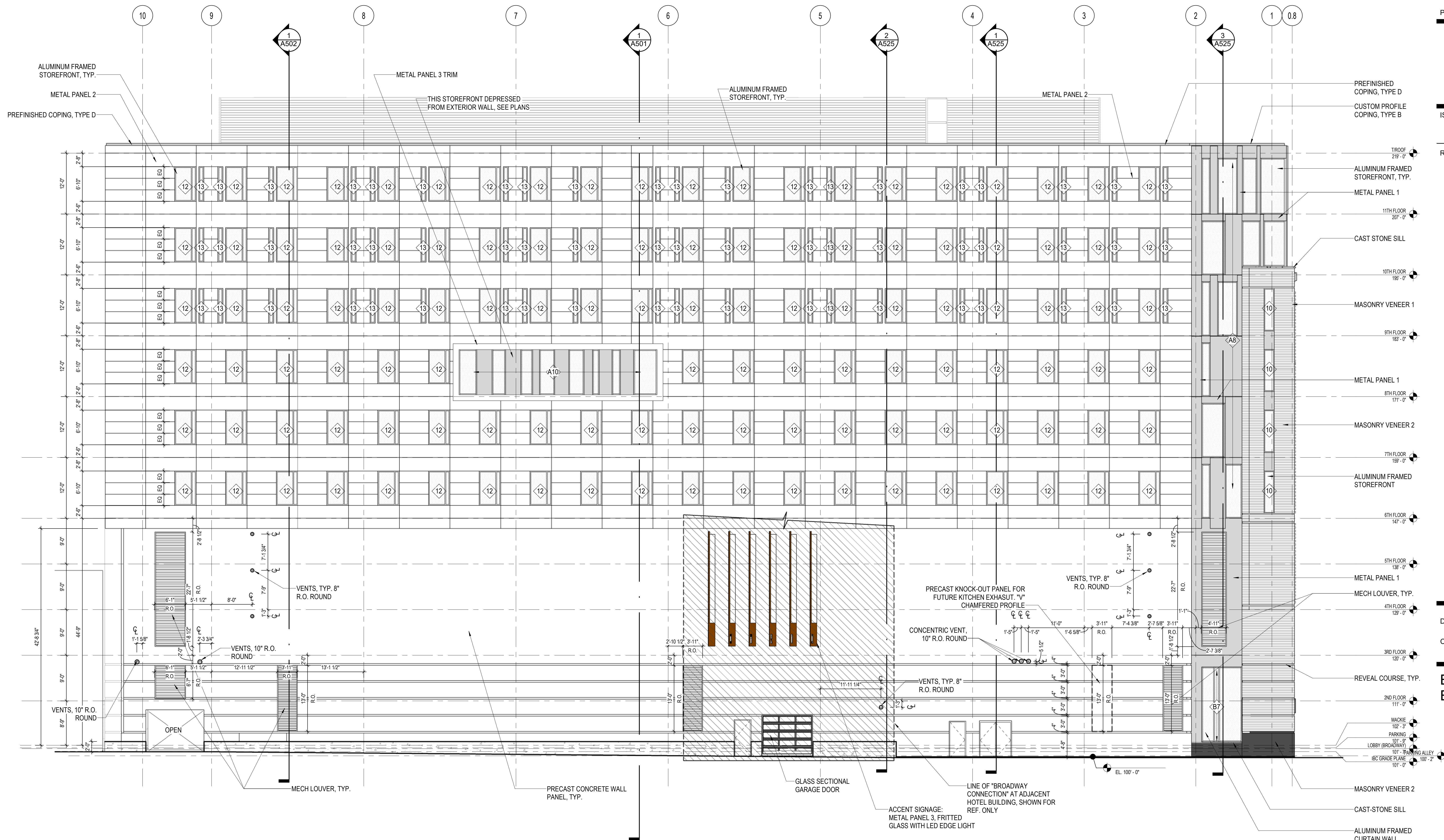
HURON BUILDING

511 NORTH BROADWAY
MILWAUKEE, WISCONSIN 53202
OWNER:
J. JEFFERS & COMPANY
225 EAST MICHIGAN STREET, SUITE 300
MILWAUKEE, WISCONSIN 53202

PROJECT NUMBER 172738.00

ISSUED FOR:
PLAN REVIEW 04-18-19

NO.	DESCRIPTION	DATE
1	ADDENDUM 03	06-07-19
2		
3	CB 01	08-06-19



1 WEST ELEVATION
SCALE: 1/8" = 1'-0"

**BUILDING
ELEVATIONS**

DRAWN BY Author
CHECKED BY Checker