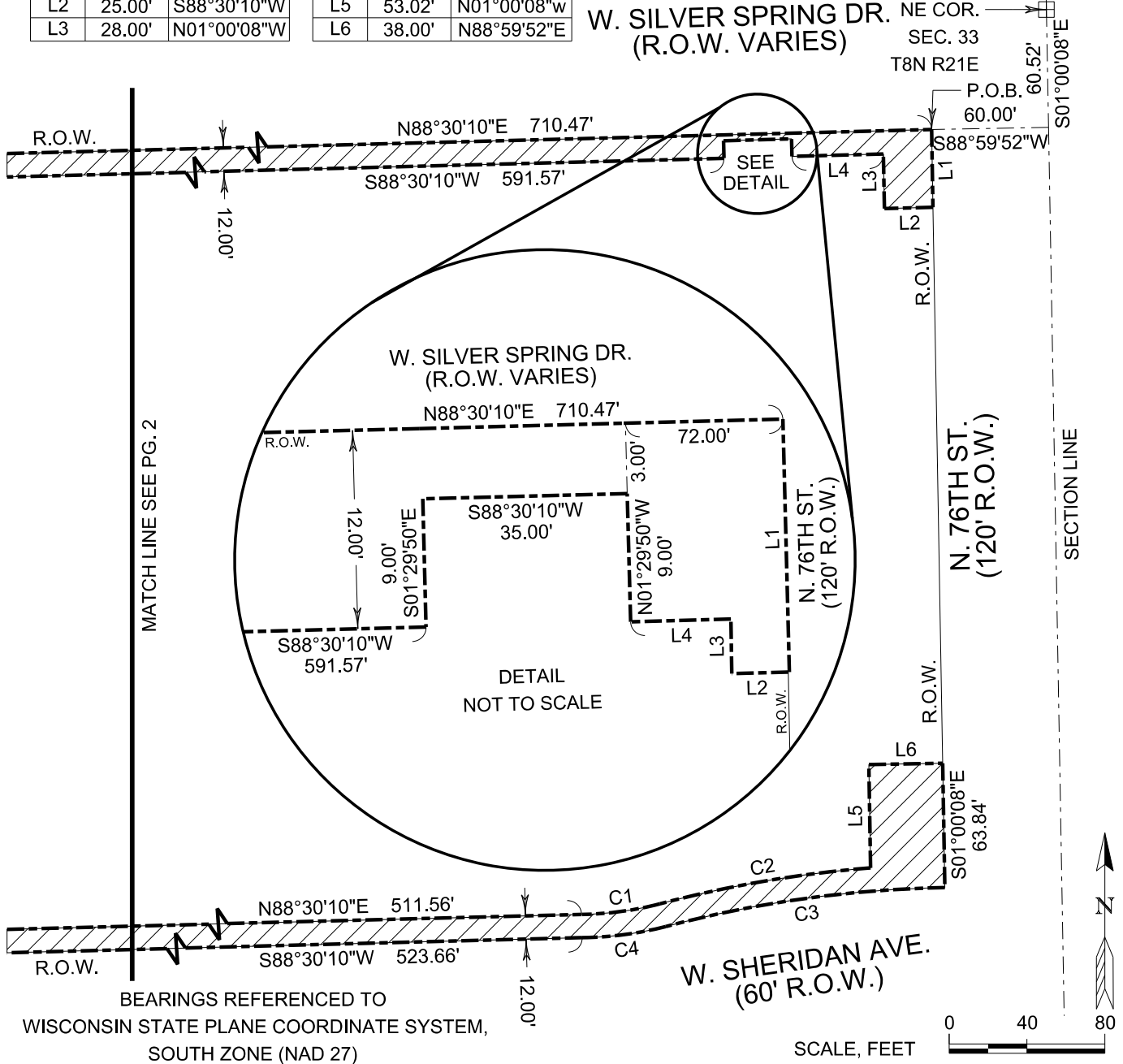
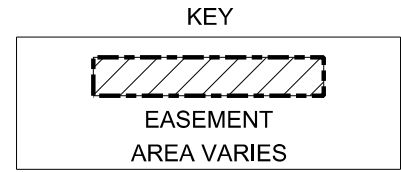


CURVE	ARC LENGTH	RADIUS	CHORD BEARING	CHORD LENGTH
C1	40.45'	167.28'	N82°21'21"E	40.35'
C2	109.89'	612.00'	N80°17'35"E	109.75'
C3	145.08'	600.00'	S82°04'13"W	144.72'
C4	43.35'	179.28'	S82°21'21"W	43.25'

LINE	LENGTH	BEARING
L1	40.00'	S01°00'08"E
L2	25.00'	S88°30'10"W
L3	28.00'	N01°00'08"W

LINE	LENGTH	BEARING
L4	46.90'	S88°30'10"W
L5	53.02'	N01°00'08"W
L6	38.00'	N88°59'52"E



**kapur**  
all in

7711 N. Port Washington Road  
Milwaukee, Wisconsin 53217

Kapurinc.com

# EXHIBIT "A"



PART OF THE NE 1/4 OF THE NE 1/4 OF  
SEC. 33, T8N, R21E, CITY OF MILWAUKEE,  
MILWAUKEE COUNTY, WISCONSIN

WR NUMBER: 5141143

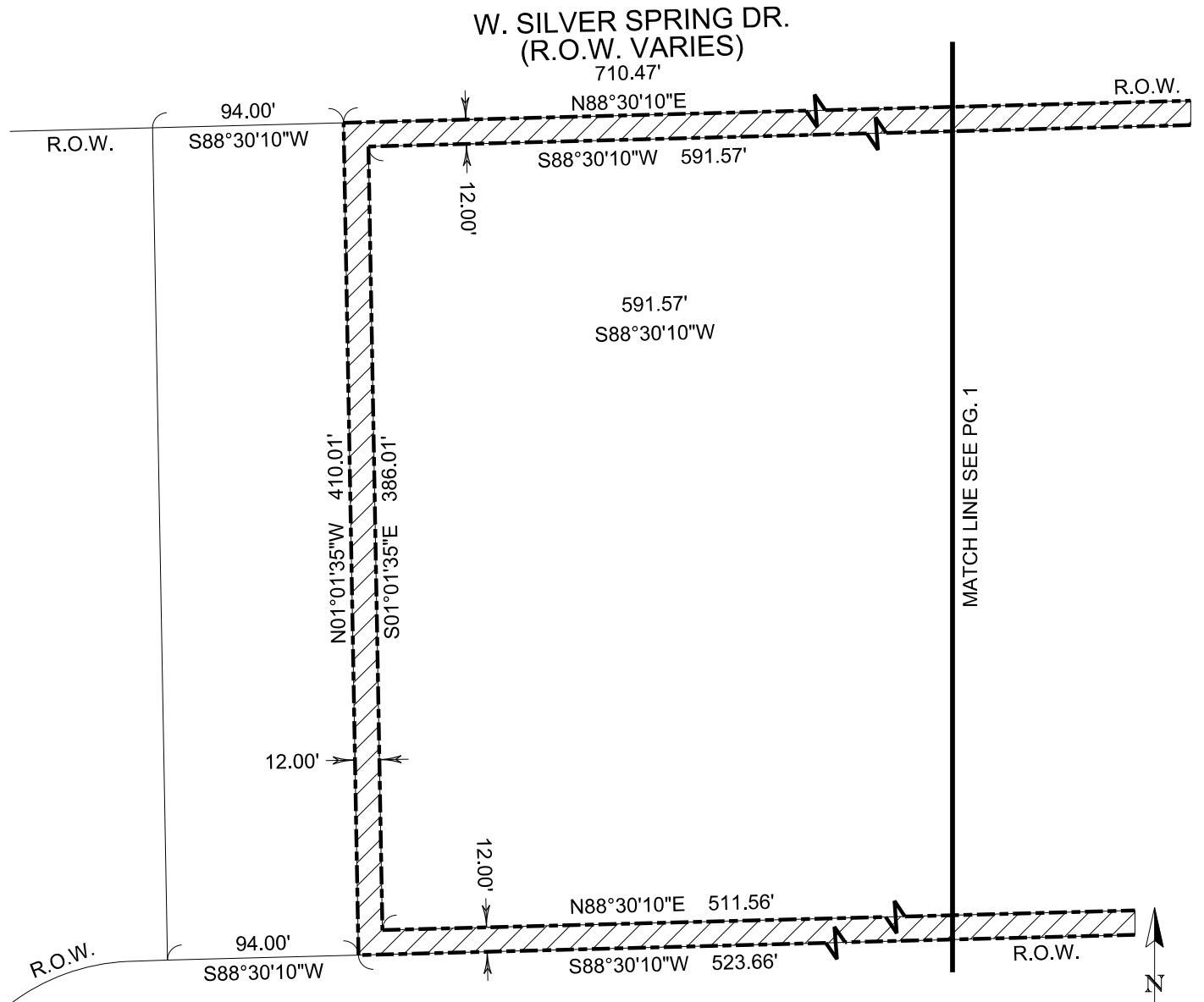
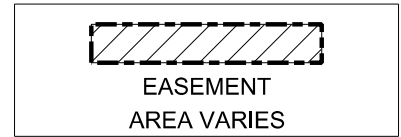
DATE: 4/14/2026

DRAWN BY: BLN

SCALE: 1" = 80'

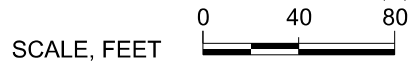
PAGE 1 of 2

KEY



MATCH LINE SEE PG. 1

BEARINGS REFERENCED TO  
WISCONSIN STATE PLANE COORDINATE SYSTEM,  
SOUTH ZONE (NAD 27)



7711 N. Port Washington Road  
Milwaukee, Wisconsin 53217  
Kapurinc.com

# EXHIBIT "A"



PART OF THE NE 1/4 OF THE NE 1/4 OF  
SEC. 33, T8N, R21E, CITY OF MILWAUKEE,  
MILWAUKEE COUNTY, WISCONSIN

WR NUMBER:	5141143
DATE:	4/14/2026
DRAWN BY:	BLN
SCALE:	1" = 80'
PAGE 2 of 2	