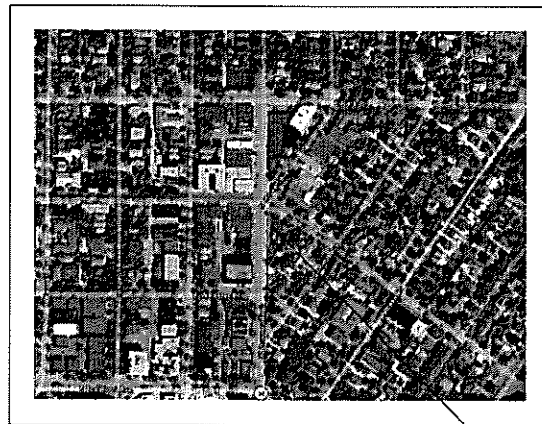


# RETAIL AND PARKING STRUCTURE

2590 NORTH DOWNER AVENUE



⊕ PROJECT LOCATION

## CONSTRUCTION DOCUMENTS

### PROJECT AND BUILDING DATA

**OVERALL BUILDING:** 13,894 SF FOOTPRINT  
6,529 SF RETAIL MAIN FLOOR

4 STORIES WITH ROOF LEVEL PARKING  
118 PARKING STALLS

**ZONING:** PD, PLAN DEVELOPMENT

**OCCUPANCY:** M, MERCANTILE (SPECULATIVE RETAIL)  
S-2, STORAGE GARAGE ABOVE, OPEN  
PARKING STRUCTURE

**CONSTRUCTION:** TYPE II-B

### CONTACT INFORMATION

**ARCHITECTURE**

WORKSHOP ARCHITECTS  
1736 NORTH SECOND STREET  
MILWAUKEE, WI 53212  
CONTACT: MELISSA RUDOLPH  
(414) 272-8822  
FAX (414) 272-8812

**STRUCTURAL**

PIERCE ENGINEERS, INC.  
241 NORTH BROADWAY  
MILWAUKEE, WI 53202  
CONTACT: SARAH FRESCKA  
(414) 278-6060  
(414) 278-6061 FAX

### SHEET INDEX

T100 TITLE SHEET

**ARCHITECTURAL**

A002 SITE PLAN  
A200 GROUND FLOOR & WALL TYPES  
A201 LEVEL 2 - 4 PLAN  
A202 ROOF LEVEL PLAN  
A400 ELEVATIONS  
A401 ELEVATIONS

WORKSHOPARCHITECTS

1736 NORTH SECOND STREET  
MILWAUKEE, WI 53212  
VOICE: 414.272.8822  
FAX: 414.272.8812



PROJECT:  
RETAIL &  
PARKING  
STRUCTURE

ADDRESS:  
**2574/2590 NORTH  
DOWNER AVE**

REVISIONS		
TAG	DATE	BY

WISA PROJECT NO. 06-129  
SCALE AS NOTED  
PHASE CD  
DATE 9.17.07

TITLE  
SHEET  
**T100**







PROJECT:  
RETAIL & PARKING  
STRUCTURE

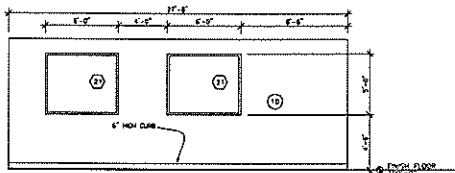
ADDRESS:  
2574/2590 NORTH  
DOWNER AVE

REVISIONS		
TAG	DATE	BY

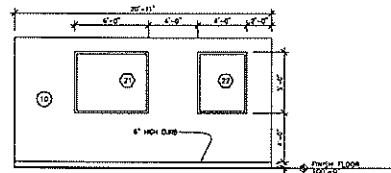
WSPA PROJECT NO. | 06-123  
SCALE | AS NOTED  
PHASE | CD  
DATE | 9.17.07

ELEVATIONS

A401



7 DRIVE-THRU ELEVATION



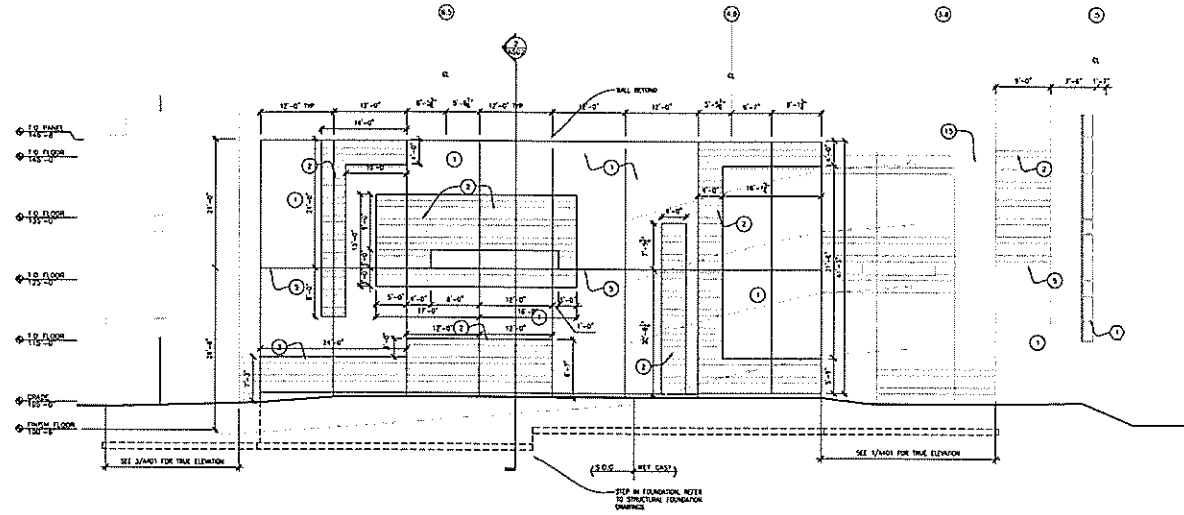
6 DRIVE-THRU ELEVATION

- WINDOW TYPES SEE A403
- SEE A402 FOR PANEL TYPES
- SEE A402 FOR FINISH LAYOUT

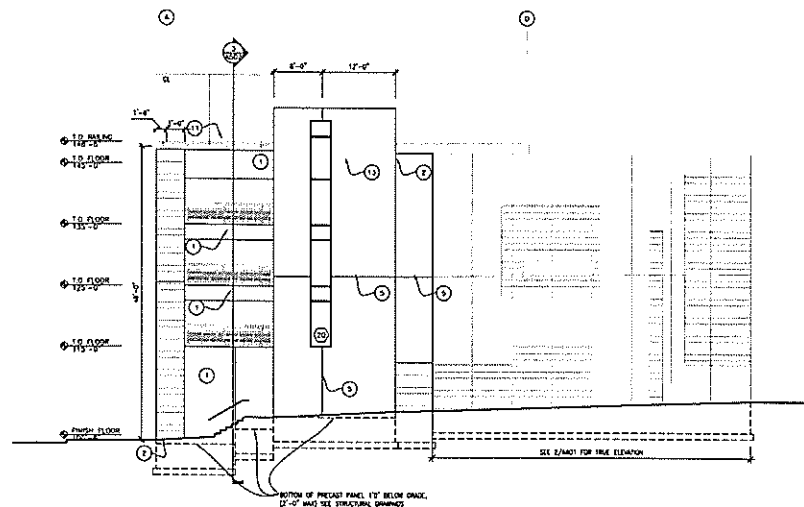
5 GENERAL NOTES

- PRECAST PANEL, WHITE CEMENT ADO ETCHED
- PRECAST PANEL WITH REVEALS, SAND BLASTED AND FINISHED
- PRECAST LEDGER BEAM, WHITE CEMENT, ADO FINISHED
- FIN SET BLACK GRANITE AT BASE, ALUM VERTICAL CORNER WITH VERTICAL REINFORCING OF STONE/ROCK GRANITE ABOVE
- PRECAST PANEL JOINTS TO BE COORDINATED WITH PRECAST CONCRETE CONTRACTOR & ARCHITECT
- CURTAIN WALL GLAZING SYSTEM SAAS BY OR ARCHITECTURAL, FOR WINDOW TYPES SEE A404
- FRONTMOUNT GLAZING, 450 SYSTEM BY OR ARCHITECTURAL, WITH SET GLAZE BOOK FOR WINDOW TYPES SEE A404
- FINISH FINISH WITH ALUMINUM FRAME, DANIELLI FABRIC FINISH ON 1" SQUARE ALUMINUM FINISH
- ELECTRICAL CONTRACTOR TO COORDINATE POWER FOR SERVICE, SLEEVES ELECTRIC THROUGH PRECAST LEADER BEAM THROUGH FINISH
- DRILL WITH INTERNAL SET BLOCK FINISH, COLOR TO MATCH PRECAST CONCRETE STAIN
- NEAL FINISH POWDER COATED, COLOR SELECTED BY ARCHITECT
- NEAL FINISH FINISH, POWDER COATED, COLOR SELECTED BY ARCHITECT (SAMAIA DETAIL TO A400)
- PRECAST PANEL SAND BLASTED AND FINISHED
- WHITE CEMENT PRECAST COLUMN, ADO ETCHED
- NEAL FINISH POWDER COATED, WITH GAZE, COLOR SELECTED BY ARCHITECT
- NEAL FINISH, COLOR TO MATCH ADJACENT WALL, VERIFY SIZE & LOCATION WITH FINISH CONTRACTOR
- VENTILATE FINISH BEHIND PANEL AT LEADING NOTES REMOVE DRILL. SEE PLAN ON A201.

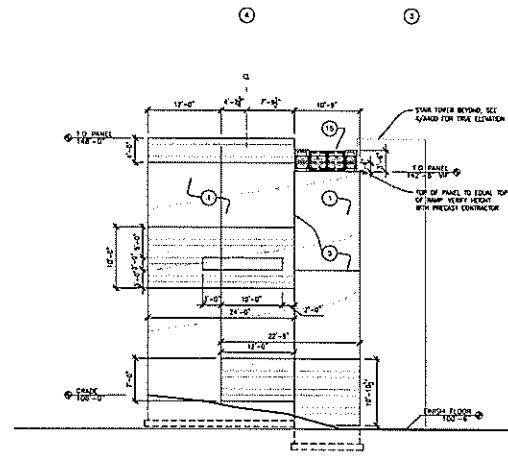
4 MATERIAL KEY



2 EAST ELEVATION



3 SOUTH ELEVATION



1 NORTHEAST ELEVATION





