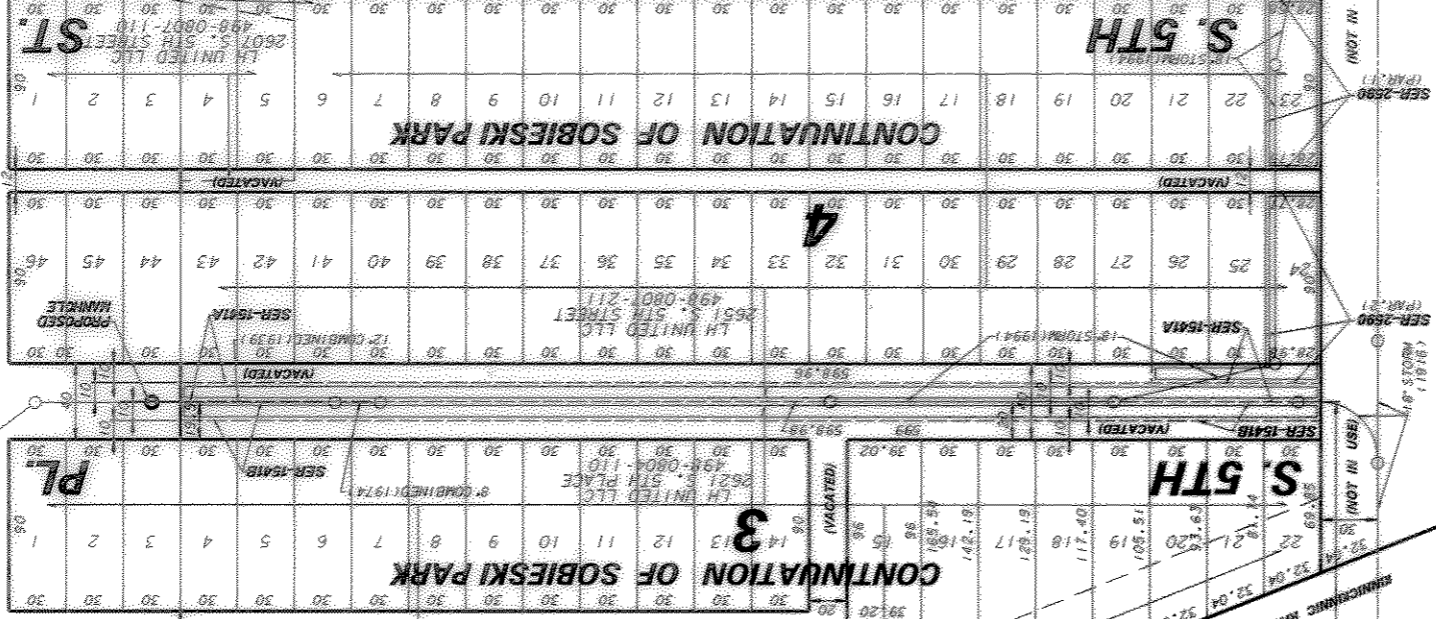


W. HARRISON AVE.

W. HARRISON AVE.

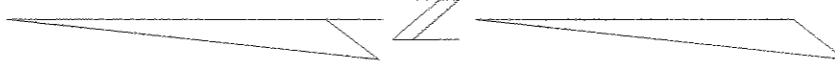
12" COMBINED (1987)



S. 6TH ST.

W. CLEVELAND AVE.

W. CLEVELAND AVE.



ENVIRONMENTAL ENGINEERING SECTION
 INFRASTRUCTURE SERVICES DIVISION
 DEPARTMENT OF PUBLIC WORKS
 MILWAUKEE, WISCONSIN

PLAN OF SEWER EASEMENT

AREA IN N.E.1/4 SEC.8, T.6 N., R.22 E.
 VACATED S. 5TH PLACE FROM W. HARRISON AVE.
 TO W. CLEVELAND AVE.

SCALE 1" = 100' ATLAS PAGE NO. 488 EASE NO. SER 2590 PAR. 1 & 2
 DRAWN BY JAWISE CHTD. BY EIO W.O. NO. WK68370028
 APPROVED *Jeffrey S. Pedersen* DATE 5/3/06
 APPROVED *Jeffrey S. Pedersen* FILE NO. 198-6-5