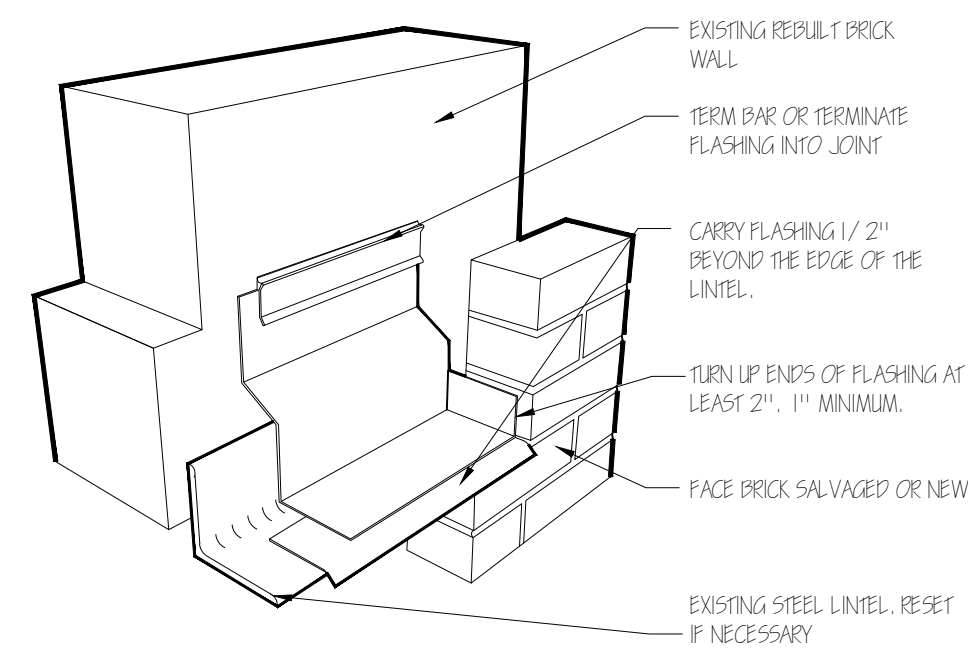
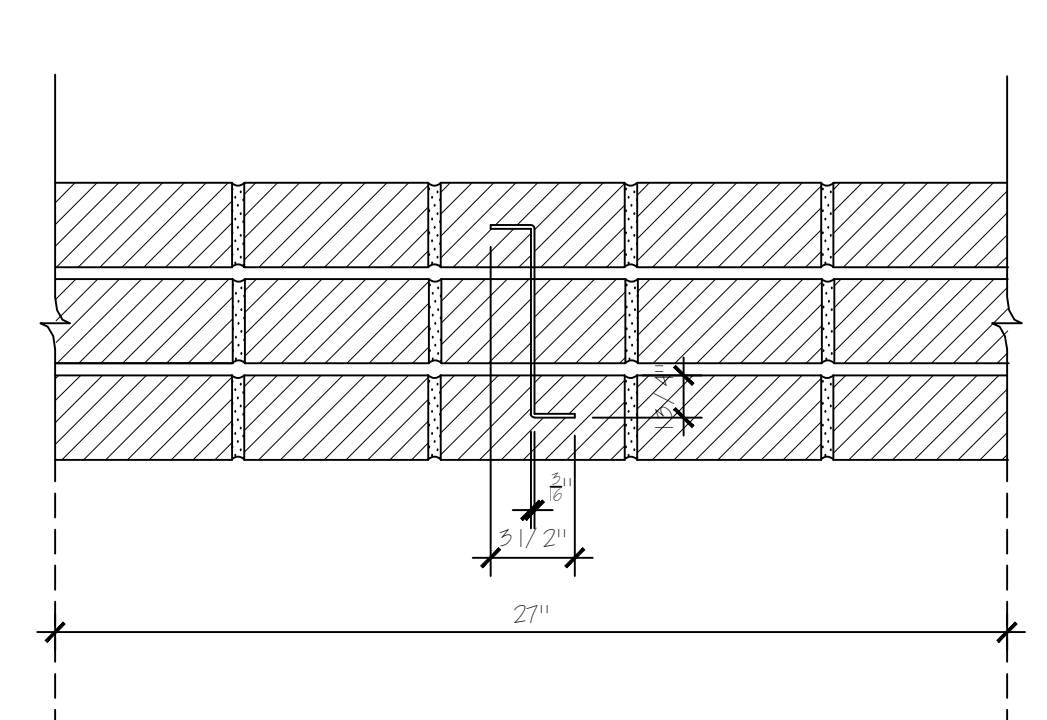


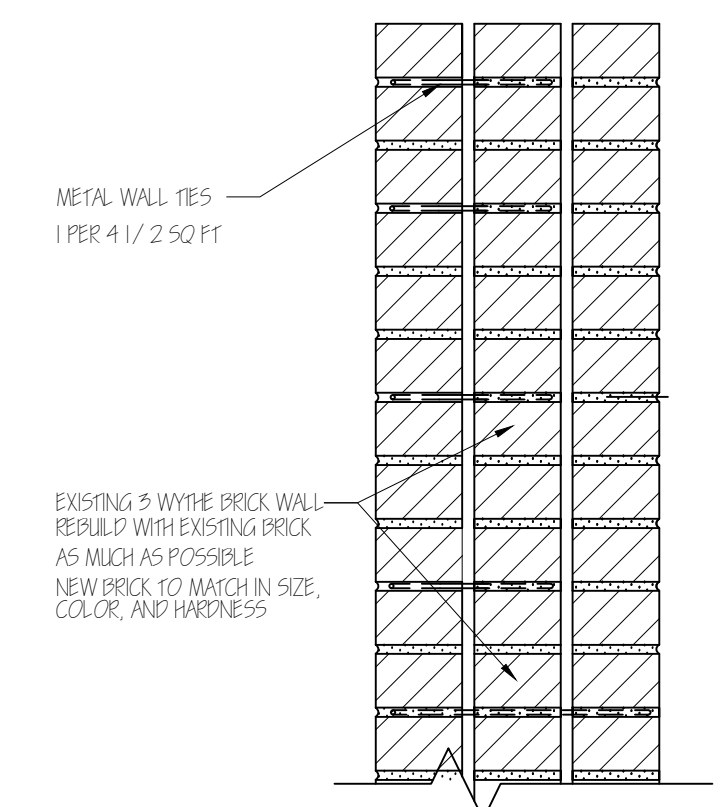
1 BUILDING ELEVATION
SCALE: 1/2" = 1'-0"



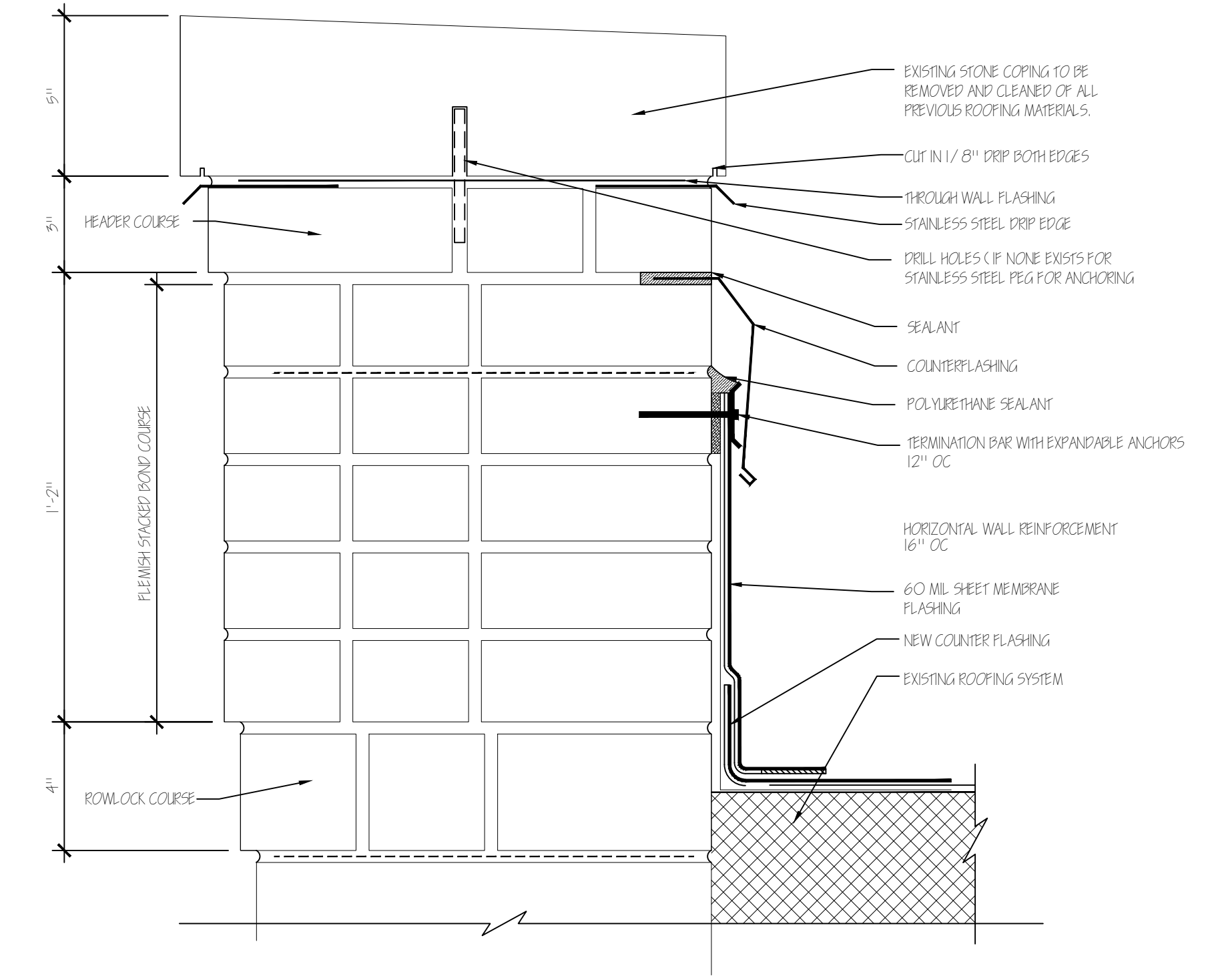
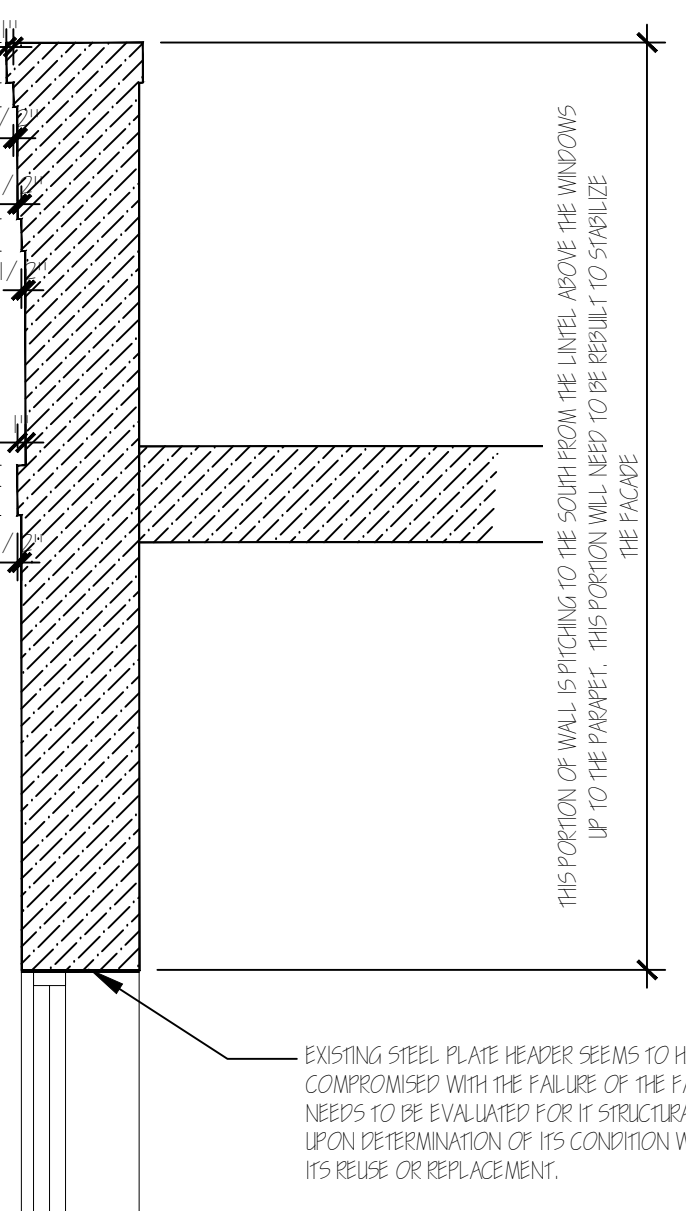
2 END DAM DIAGRAM
SCALE: N.T.S.



3 METAL WALL TIE DETAIL
SCALE: 1 1/2" = 1'-0"



4 WALL TIE DETAIL
SCALE: 1 1/2" = 1'-0"



5 PARAPET DETAIL
SCALE: 3/4" = 1'-0"

**FACADE RESTORATION
1119 WEST HISTORIC MITCHELL STREET
MILWAUKEE, WI 53204**

SchultzWerk
Architecture, Inc.
2515 North 66th Street
Wauwatosa, WI 53213
414.322.7374
swerk@juno.com

ARCHITECT:
Keith Schultz, ALA, ASID



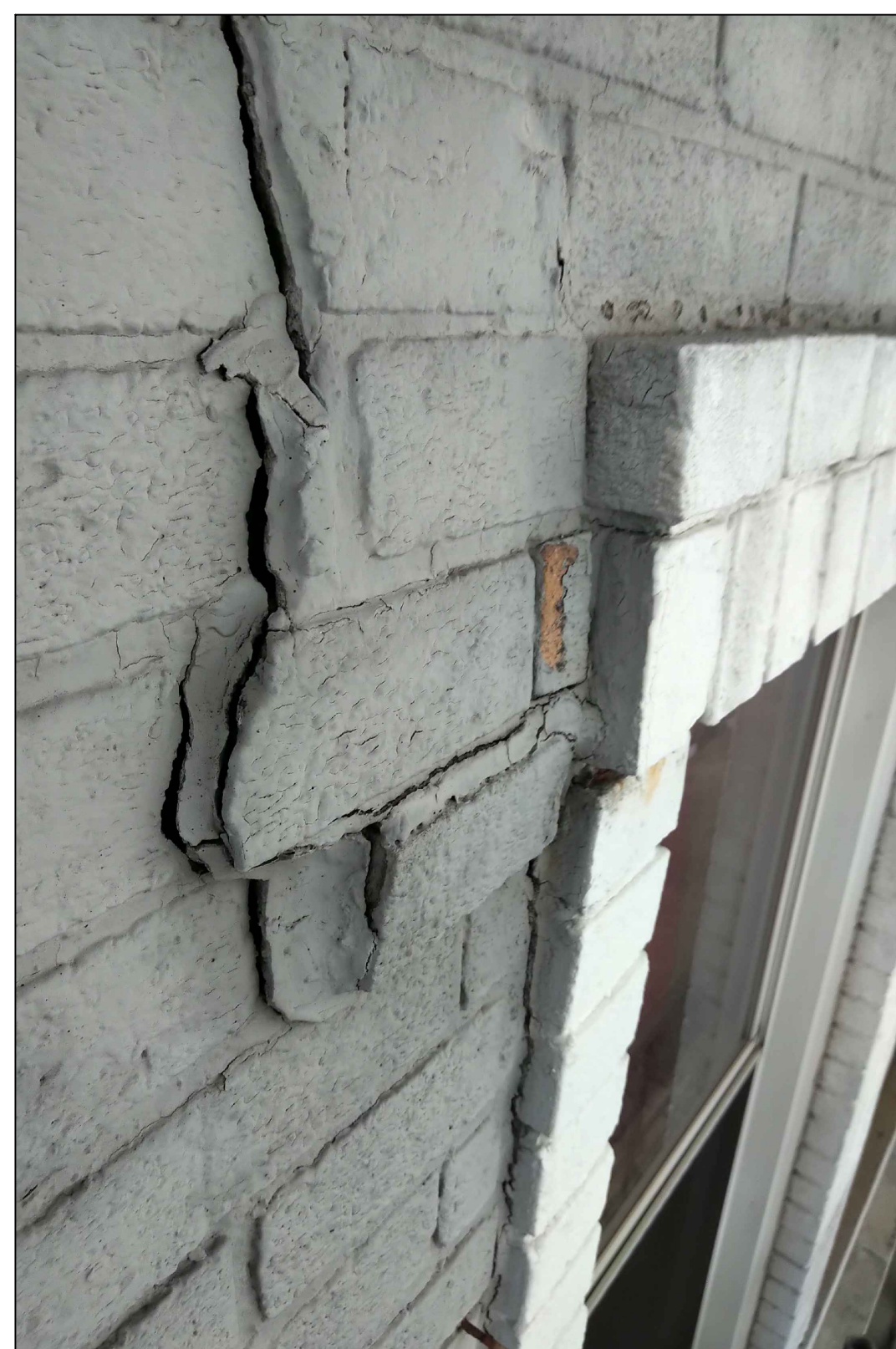
REVISIONS

PROJECT NO.	22047.00
DATE	8/25/2022
DRAWN BY	
CHECKED BY	

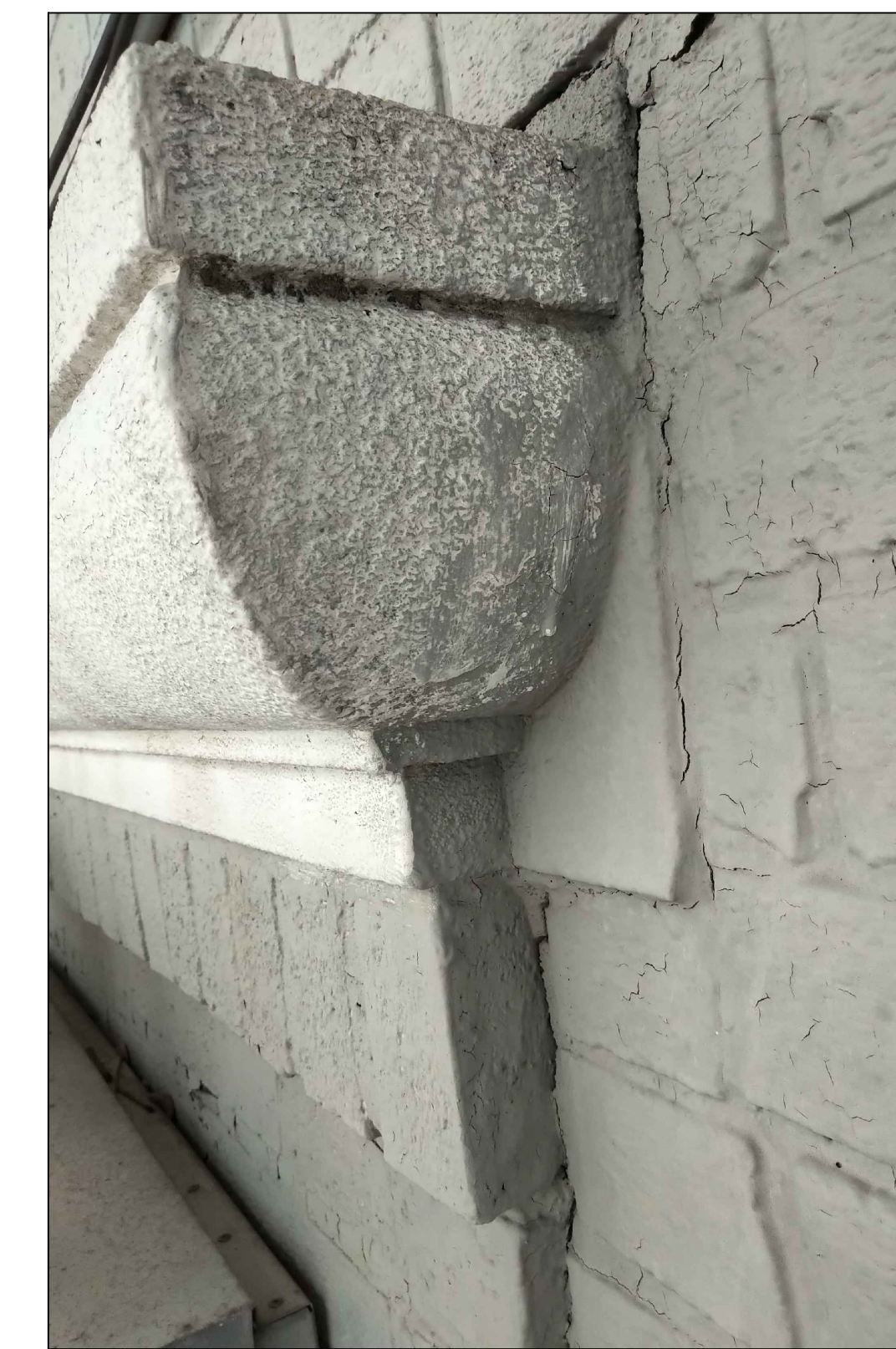
SHEET CONTENTS
ELEVATION; SECTION CUT
DETAILS



SECOND FLOOR WINDOWS: BRICK JAMBS HEAD AND ARCH DETAIL. FACADE MOVEMENT; CRACKED DAMAGED AND PROTRUDING BRICKS
MOVEMENT GAP NOTICEABLE AT WINDOW HEAD.



MISSING MORTAR, EXPANDED JOINTS BECAUSE OF MOVEMENT; GAP AT STEEL LINTEL
NOTE THE RUST STAINS FROM THE LINTEL ON THE WINDOW



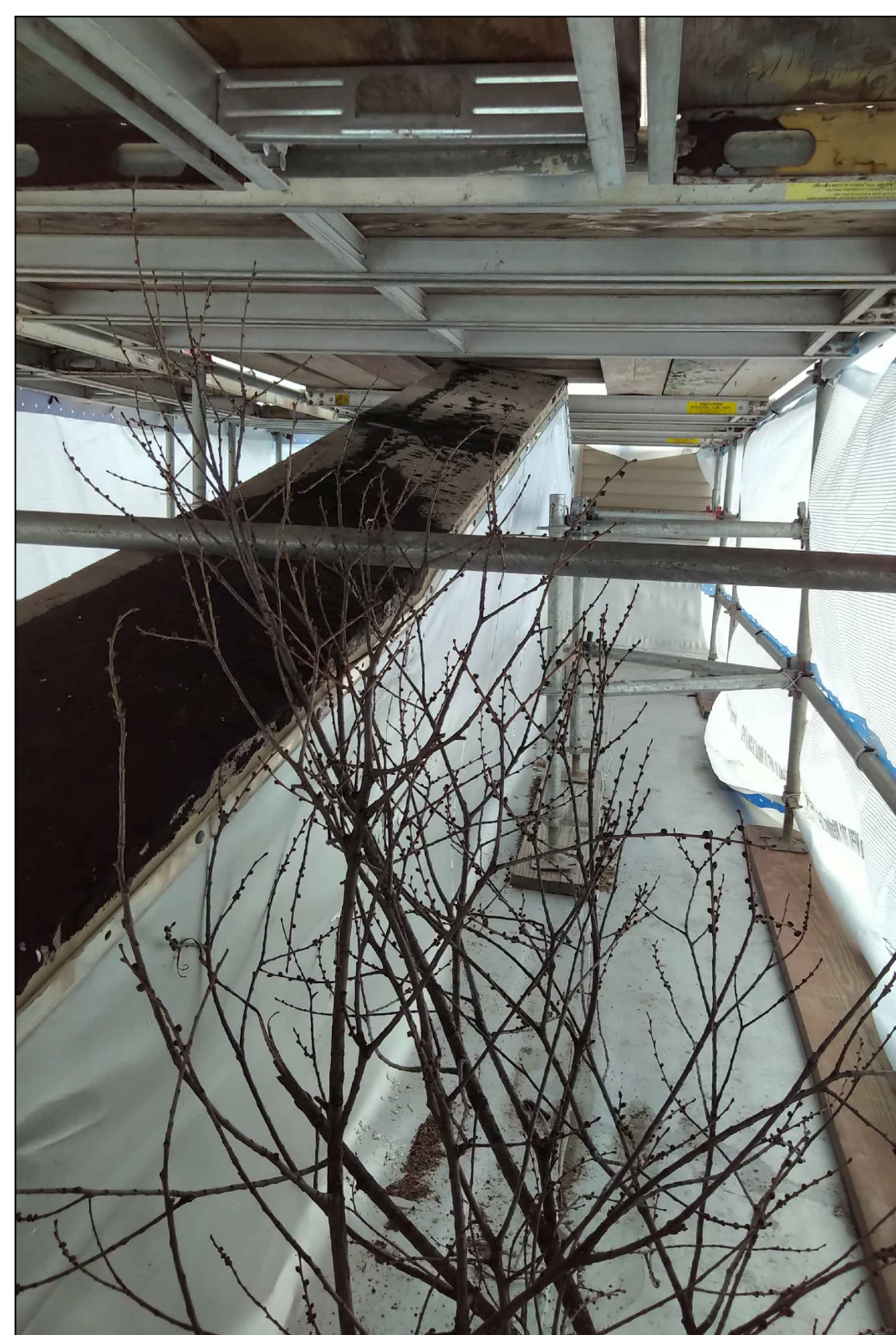
STONE SILL AND BRICK DETAIL



MOVEMENT CRACK FROM WINDOW LINTEL TO WEST WALL AT COIN DETAIL



UPPER WINDOW HEADER BRICK DETAIL



TREE GROWING ON ROOF - ROOF DAMAGE; WATER DAMAGE TO WALL AND POOR DRAINAGE. BAD JOINTS BETWEEN COPING STONES



UPPER WEST CORNER DETAIL - WATER INFILTRATION DAMAGE
BRICK AND COPING MOVEMENT



COPING STONES IMPROPERLY SEALED WITH ASPHALT



BEST PHOTO TO SHOW THE "LEANING" OF THE UPPER PORTION OF WALL. AT LEAST 5 DEGREES OUT OF PLUMB

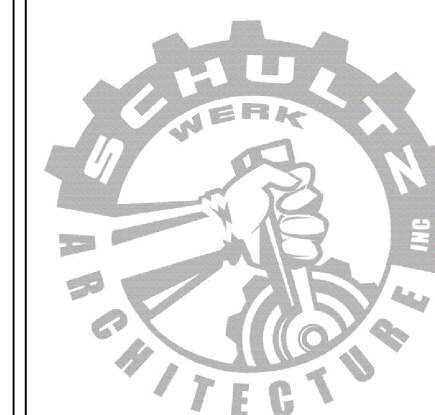


UPPER WEST CORNER DETAIL - WATER INFILTRATION DAMAGE
BRICK AND COPING MOVEMENT - POOR JOINT REPAIR

FACADE RESTORATION
1119 WEST HISTORIC MITCHELL STREET
MILWAUKEE, WI 53204

SchultzWerk
Architecture, Inc.
2515 North 66th Street
Wauwatosa, WI 53213
414.322.7374
swerk@juno.com

ARCHITECT:
Keith Schultz, ALA, ASID



REVISIONS

PROJECT NO. 22047.00
DATE 8/25/2022
DRAWN BY
CHECKED BY

SHEET CONTENTS
PHOTOS