



Certificate of Appropriateness

Milwaukee Historic Preservation Commission/841 N Broadway/Milwaukee, WI 53202/phone 414-286-5722

Property Description of work

1030-1040 N. Vel Phillips Ave., Turner Hall

Temporary change of signage per attached, along with temporary lighting scheme. Signage and lighting will be restored to their June 2024 condition no later than July 31, 2024.

Date issued 6/26/2024

In accordance with the provisions of Section 320-21 (11) and (12) of the Milwaukee Code of Ordinances, the Milwaukee Historic Preservation Commission has issued a certificate of appropriateness for the work listed above. The work was found to be consistent with preservation guidelines. The following conditions apply to this certificate of appropriateness:

Restore signage and lighting to prior condition by no later than July 31, 2024.

Mounting posts shall be drilled into mortar joints only and not into the face of any brick or stone. Any surface-mounted electrical conduit shall be painted to match surrounding building material.

All work must be done in a craftsman-like manner. Staff must approve any changes or additions to this certificate before work begins. Work that is not completed in accordance with this certificate may be subject to correction orders or citations. If you require technical assistance, please contact Historic Preservation staff as follows: Phone: (414) 286-5722 E-mail: hpc@milwaukee.gov.

Permits and timeline

You are responsible for determining if permits are required and obtaining them prior to commencing work. Consult the Development Center on the web or by telephone for details: www.milwaukee.gov/lms - (414) 286-8210. If permits are not required, work must be completed within one year of the date this certificate was issued. If permits are required, permits must be obtained within one year of the date this certificate was issued.

Andrew C. [Signature]

City of Milwaukee Historic Preservation

Copies to: Development Center, Ald. Bauman

GRILL 2024

CONFIDENTIAL Signage Application to the HPC

Updated: May 24, 2024

[Note: Changes from April Highlighted in Blue]



EXTERIOR RENDERING



Version Submitted in April

Free standing Neon Sign will not adhere to the building. This will be rigged on to trussing and ballast with Concrete ballast

Window graphics are not final and will change.

CONFIDENTIAL



MAY UPDATE: Revised Exterior Rendering

EXTERIOR RENDERING: SOUTH FACADE (FACING W STATE STREET)



Option 1: Submitted in April

CONFIDENTIAL

MAY UPDATE: Option 2: Banner replaces graphic (pending budget and approvals)



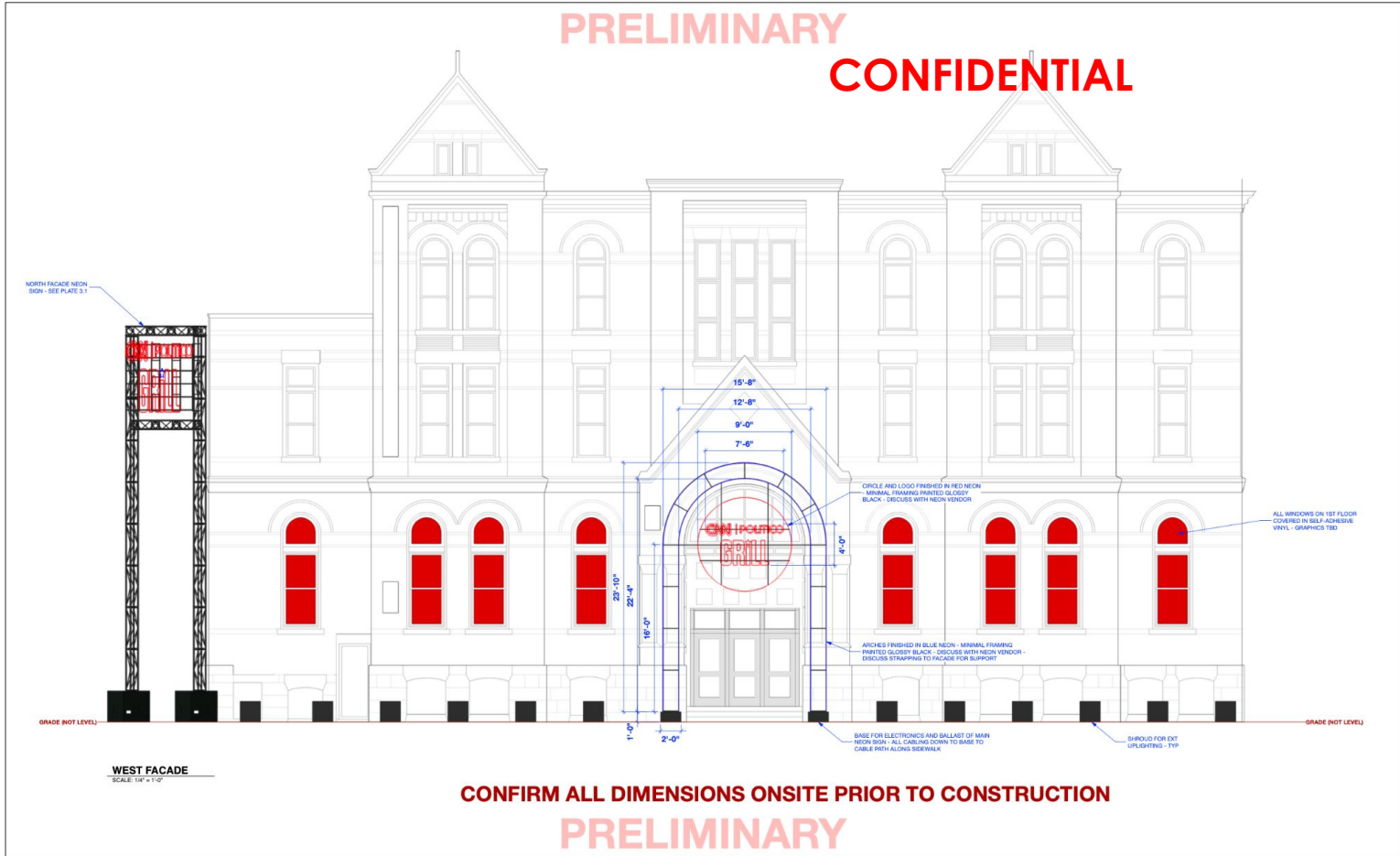
Banner would be hung from building via eye bolts

Graphic shown here is FPO

Signage Elevations*
[*NO MAY UPDATES]

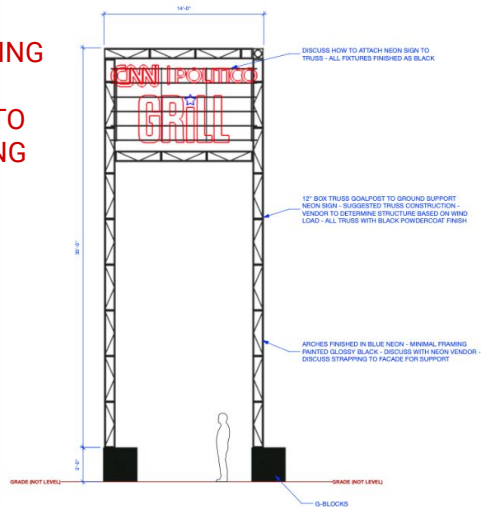
ELEVATION- EXTERIOR SIGNAGE - WEST FACADE

PRELIMINARY
CONFIDENTIAL

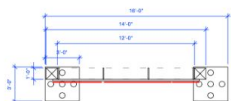


PRELIMINARY CONFIDENTIAL

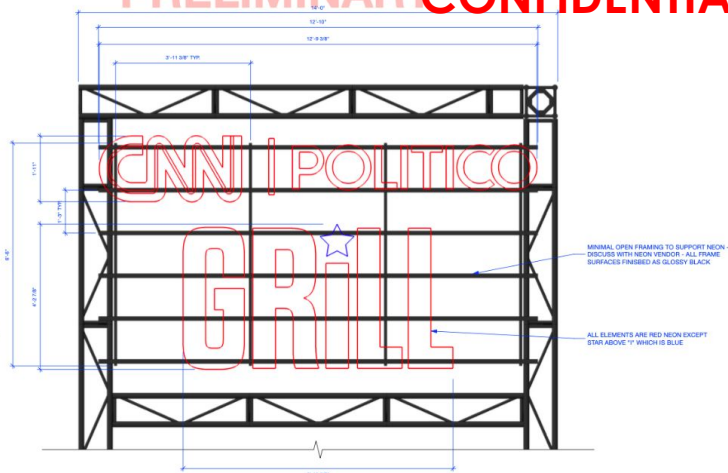
FREESTANDING / NOT ATTACHED TO THE BUILDING



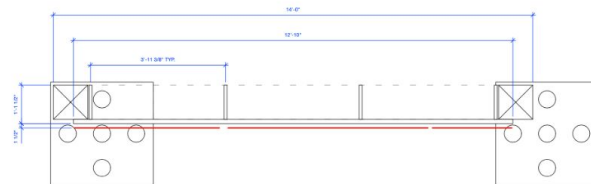
FRONT ELEVATION
SCALE: 1/4" = 1'-0"



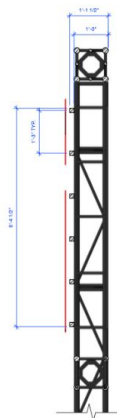
PLAN VIEW
SCALE: 1/4" = 1'-0"



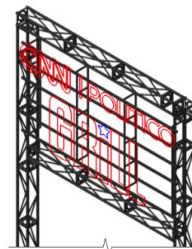
ELEVATION - DETAIL
SCALE: 3/8" = 1'-0"



PLAN - DETAIL
SCALE: 3/8" = 1'-0"



SECTION - DETAIL
SCALE: 3/8" = 1'-0"

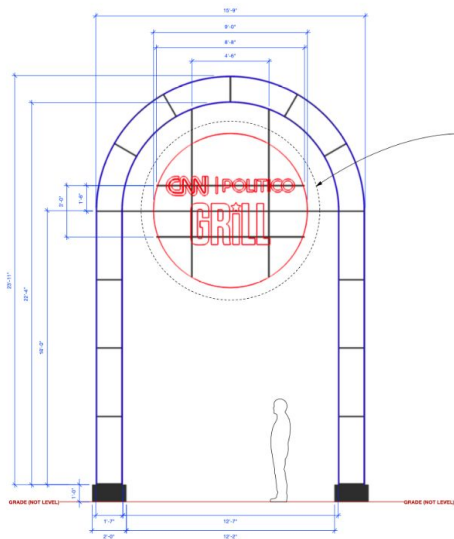


ISO VIEW
SCALE: 3/8" = 1'-0"

CONFIRM ALL DIMENSIONS ONSITE PRIOR TO CONSTRUCTION

PRELIMINARY

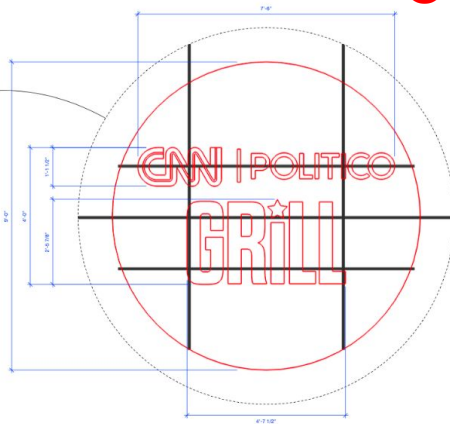
PRELIMINARY
CONFIDENTIAL



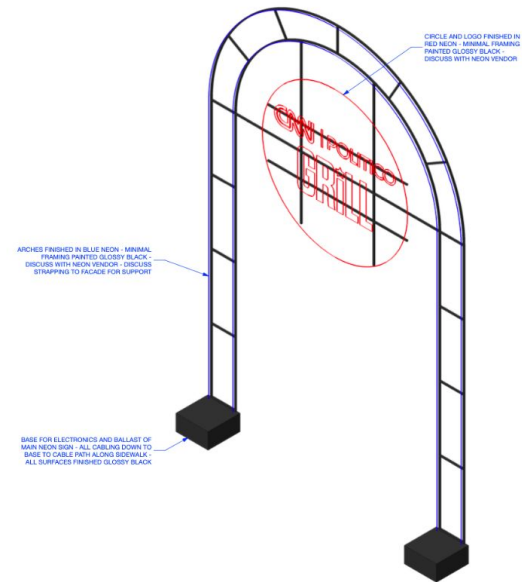
FRONT ELEVATION
SCALE: 3/8" = 1'-0"



PLAN VIEW
SCALE: 3/8" = 1'-0"



ELEVATION - DETAIL
SCALE: 3/4" = 1'-0"



ISO VIEW
SCALE: 1/2" = 1'-0"

CONFIRM ALL DIMENSIONS ONSITE PRIOR TO CONSTRUCTION

PRELIMINARY

Existing Turner Hall Signage

CONFIDENTIAL

**MAY UPDATE:
SIGN TO REMAIN AS IS OR
REMOVED, STORED for
RE-INSTALLATION, TBD**

SIGN TO REMAIN AS IS.

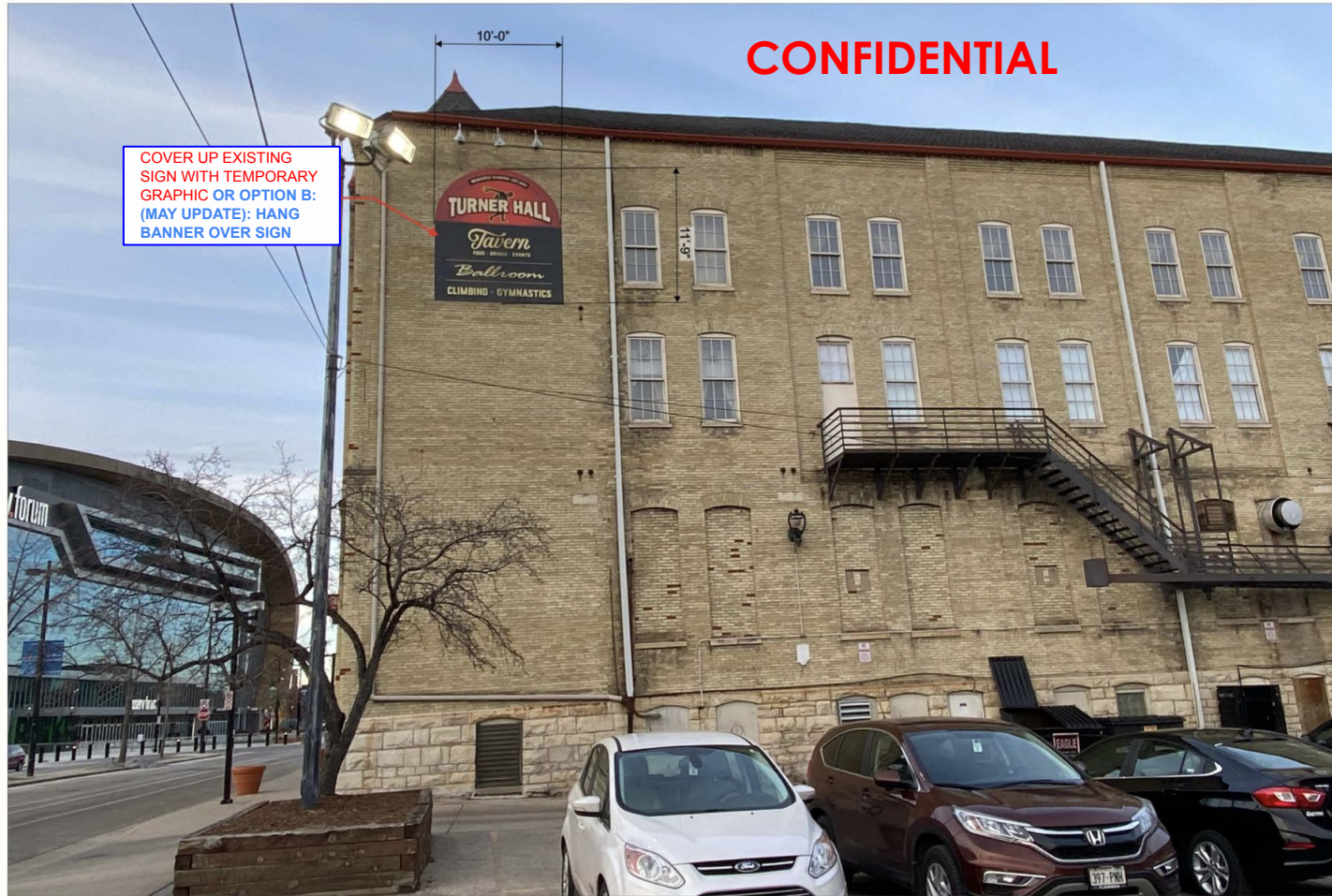
**REMOVE EXISTING BLADE SIGN
SUPPORTS TO REMAIN
SIGN TO BE STORED FOR
RE-INSTALLATION**

SIGN TO REMAIN AS IS.



CONFIDENTIAL

COVER UP EXISTING
SIGN WITH TEMPORARY
GRAPHIC OR OPTION B:
(MAY UPDATE): HANG
BANNER OVER SIGN



EXISTING