

S.W. 1/4 SEC. 6, T.6N., R.22E.

470

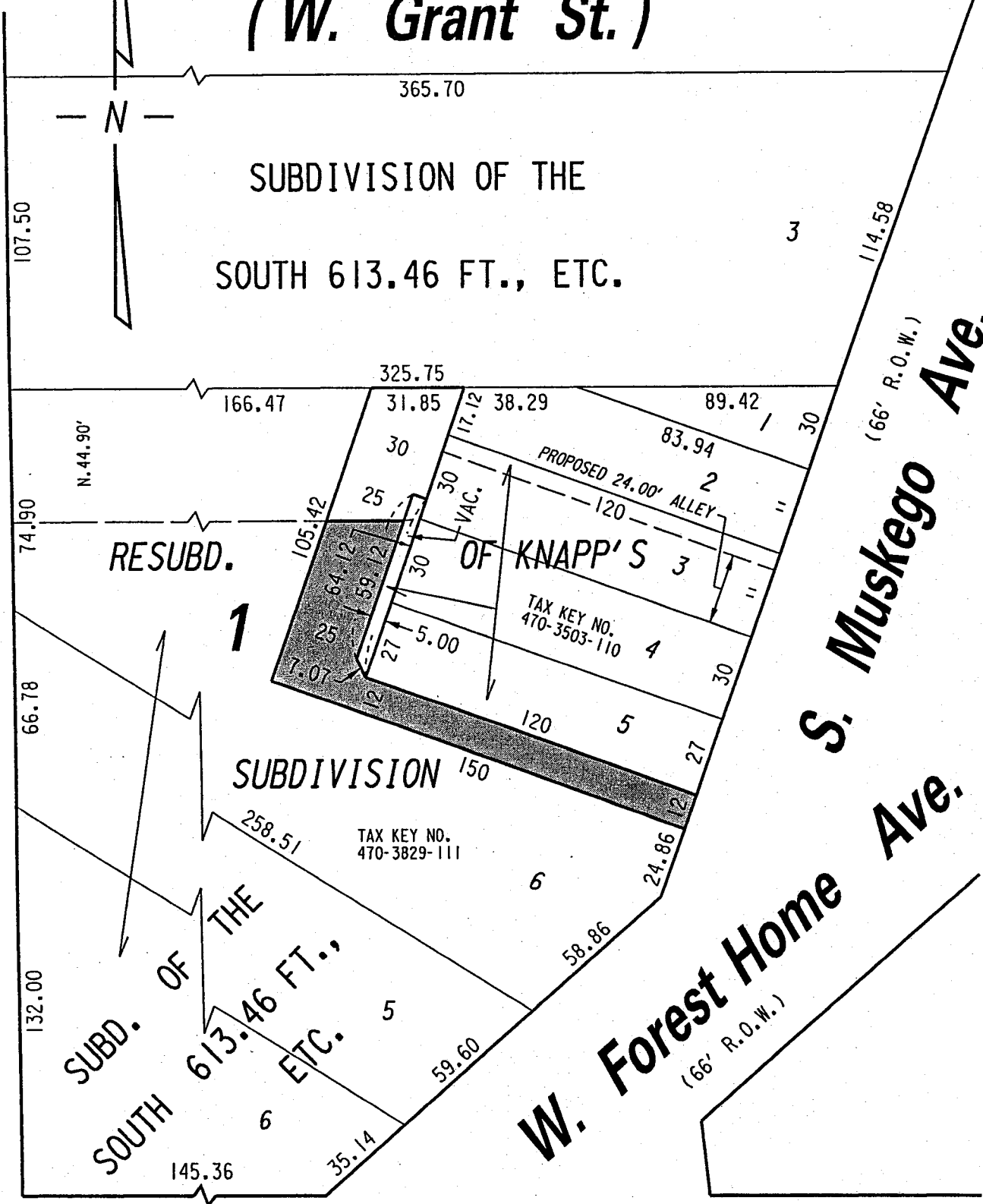
( W. Grant St. )

St.

SUBDIVISION OF THE  
SOUTH 613.46 FT., ETC.

(70' R.O.W.)

S. 25th



W. Lincoln

SEC. LINE

Ave.

(66' R.O.W.)



PORTION OF PUBLIC  
ALLEY PROPOSED TO  
BE VACATED

EXHIBIT "A"

FILE NO. 020509

INFRASTRUCTURE SERVICES DIVISION

MILWAUKEE, WISCONSIN

ASSIGNED TO: W.E. FUCHS

CH'K'D. BY: M.C. WILLIAMS

DRAWN BY: W.E.F.

DATE: AUG. 19, 2002

PROJECT/GRANT NO.: WK52337159

SCALE: 1" = 50'

APPROVED BY:

*Marcia Lindholm*

*John Blumke*

CENTRAL DRAFTING & RECORDS MANAGER

CITY ENGINEER