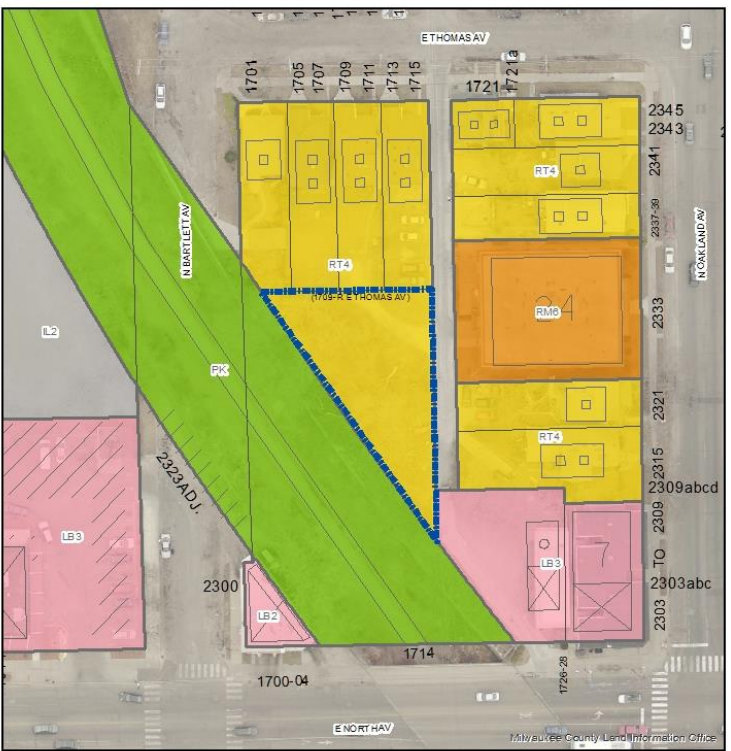


File No. 160120. A substitute ordinance relating to the change in zoning of 6 parkways, corridors and trails located in the City of Milwaukee from various zoning districts to Parks, in the 1st, 3rd, 5th, 6th, 9th and 15th Aldermanic Districts.
 A – East Side Bike Trail.



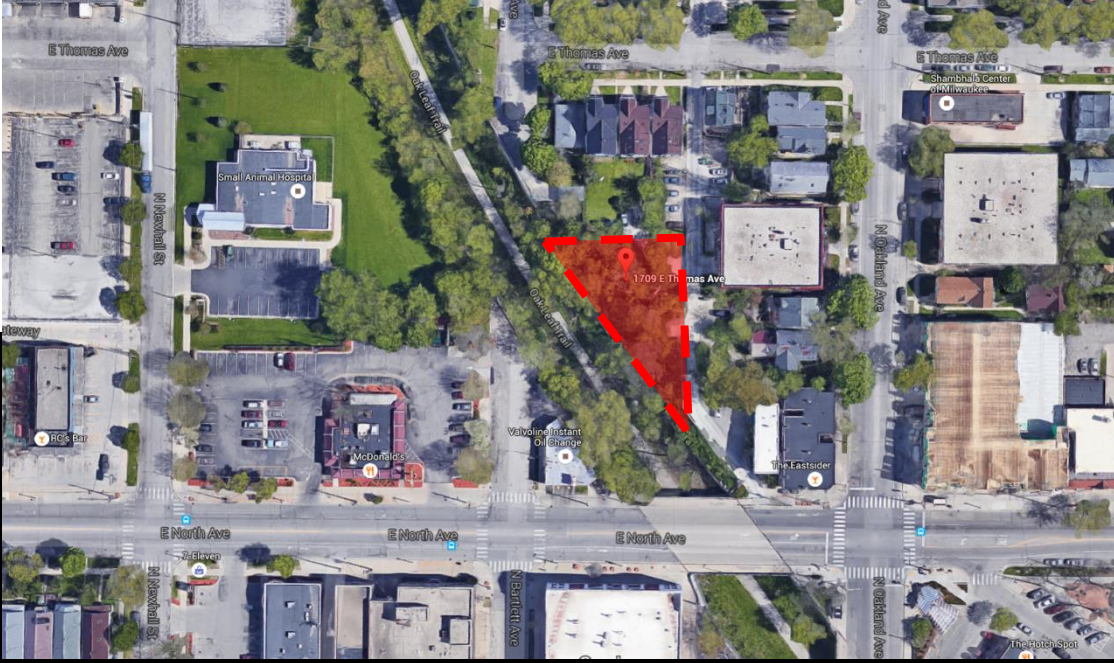
FN 160120 A
RT4 to PK (East Side Bike Trail)
July 2016

Legend

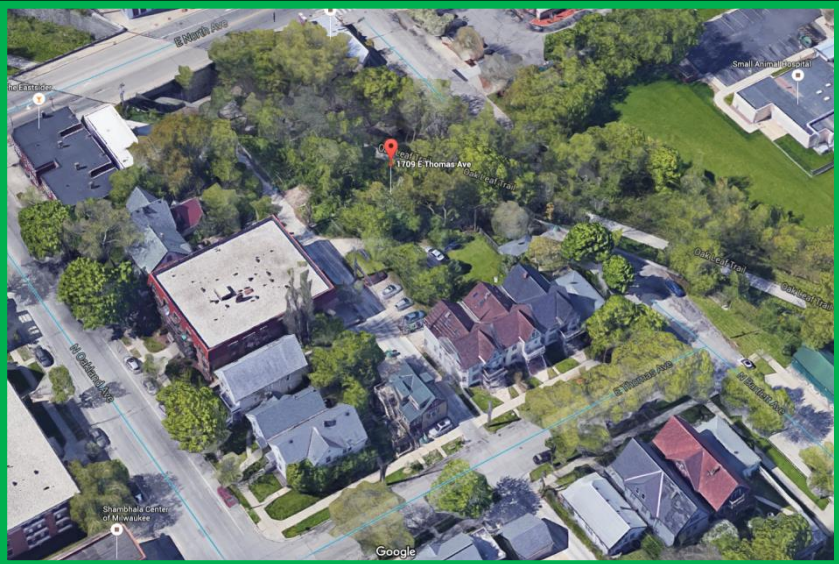
- Zoning Change Boundary

Zoning

- Commercial - Commercial Service
- Commercial - Neighborhood Shopping
- Commercial - Local Business
- Commercial - Regional Business
- Downtown
- Industrial - Office
- Industrial - Light
- Industrial - Medium
- Industrial - Heavy
- Residential - Single Family
- Residential - Two Family
- Residential - Multi-Family
- Residential - Residence and Office
- Special - Parks



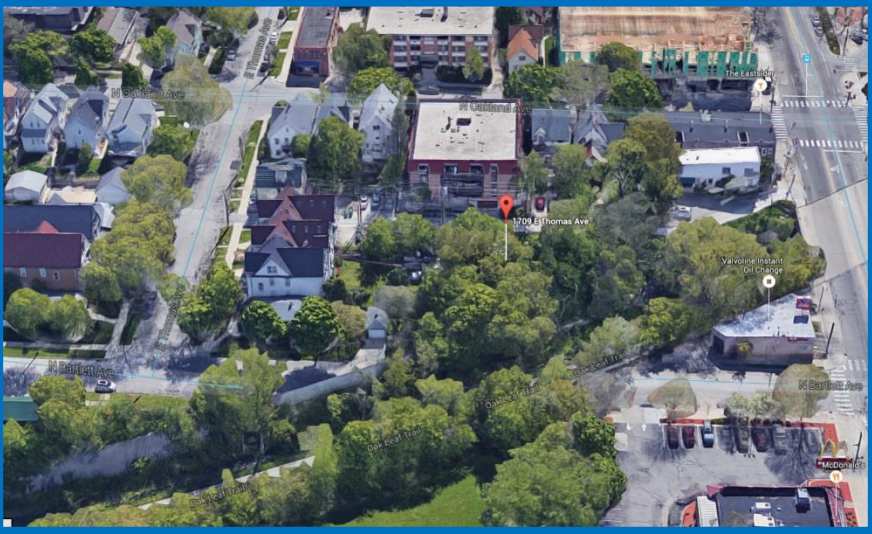
File No. 160120. A – East Side Bike Trail



Tilt view facing southwest
(intersection of Oakland & Thomas)



View from West North Avenue facing north

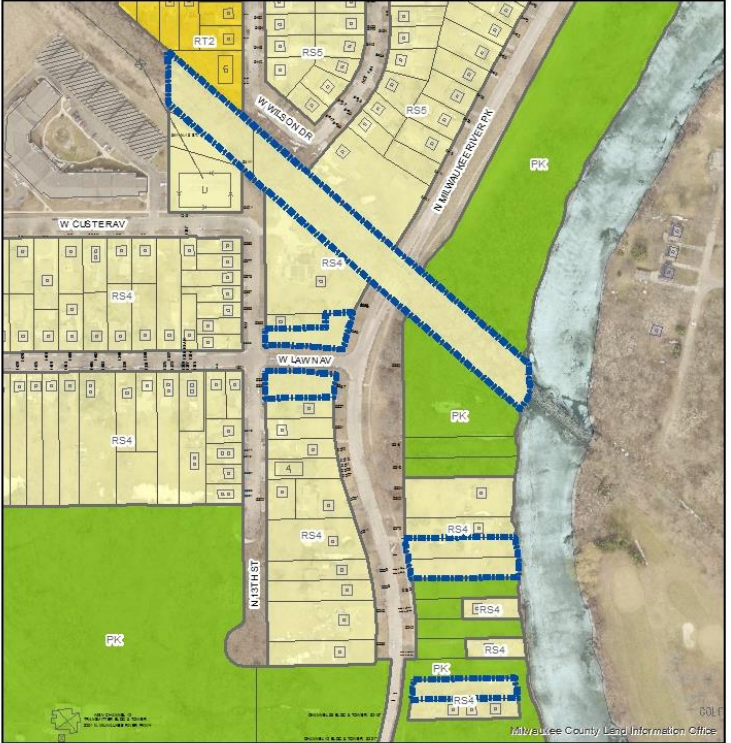


Tilt view facing east




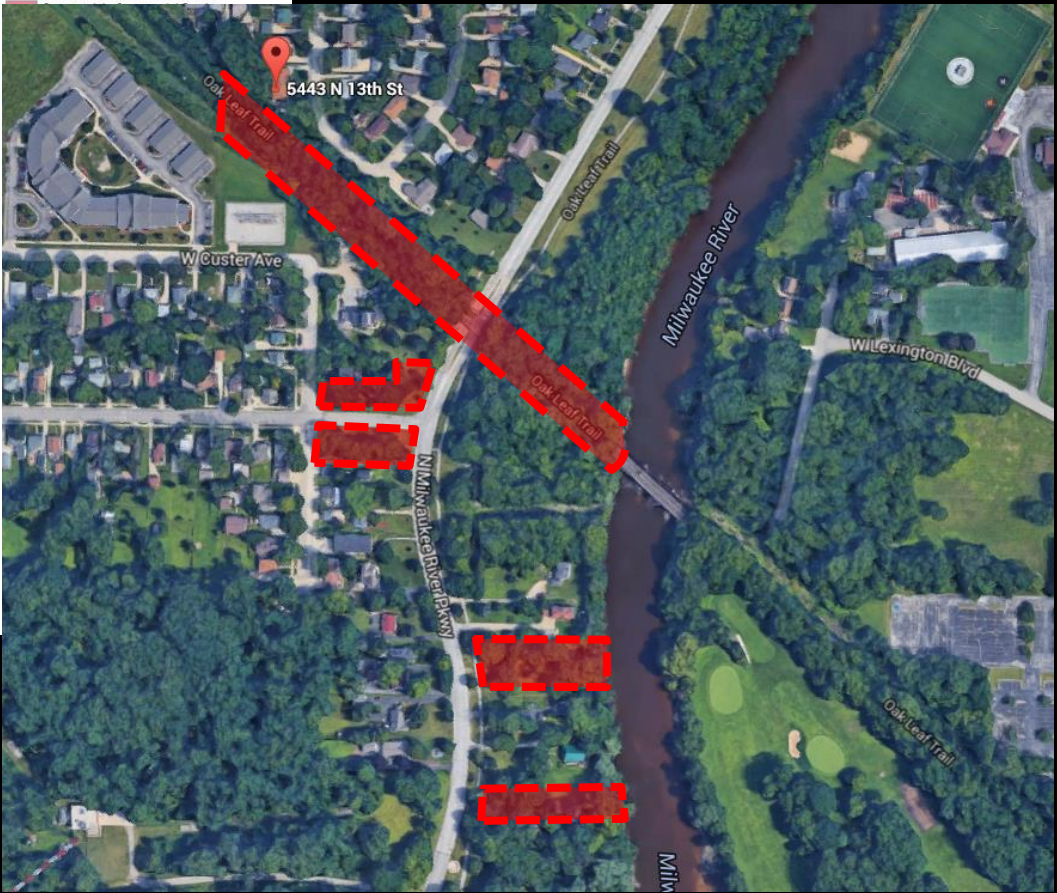
Google

File No. 160120. B - Former UP Railroad Corridor and Milwaukee River Parkway; 5212, 5258, 5262, 5330, 5337, 5349 N. Milwaukee River PK, 5443 N. 13th St.

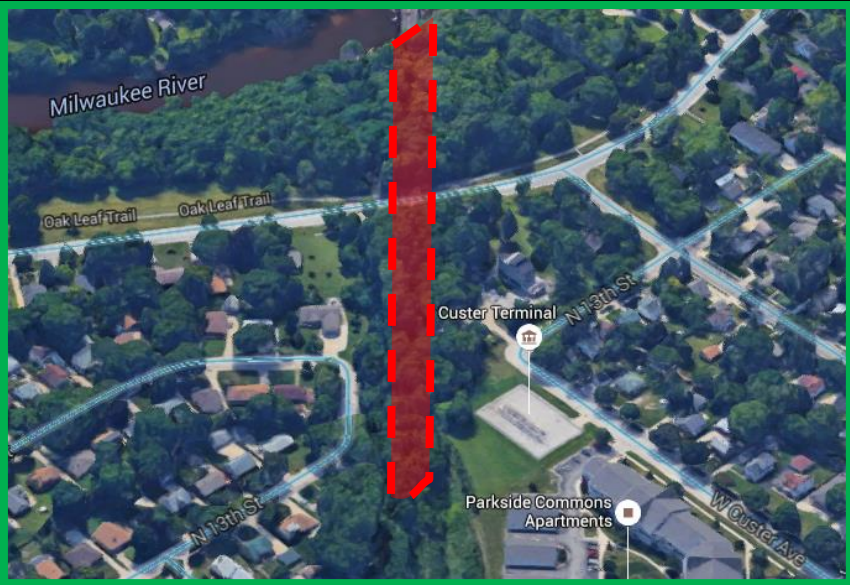


FN 160120 B
 RS4 to PK (part of former UP Railroad Corridor
 and part of Milwaukee River Parkway)
 July 2016

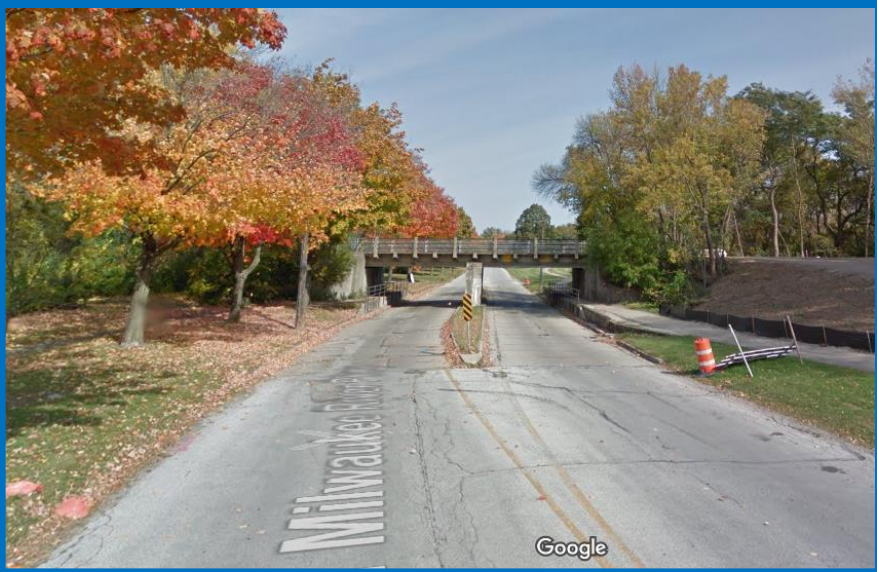
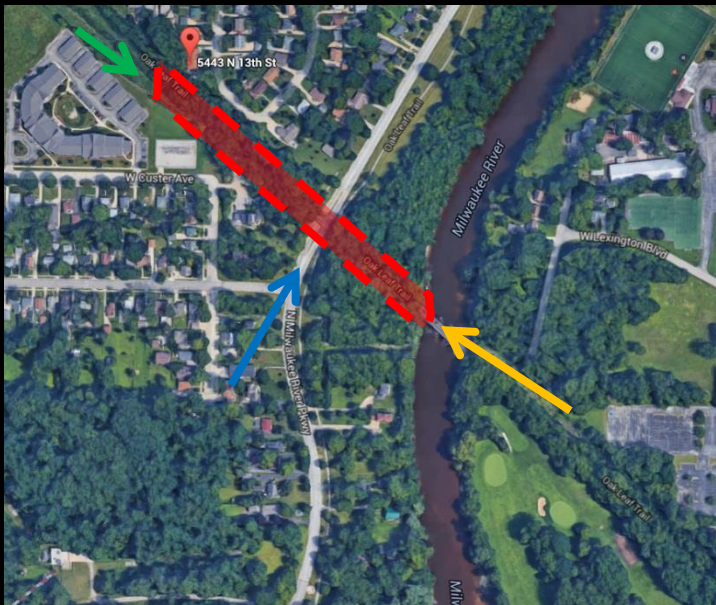
Legend
 Zoning Change Boundary
Zoning



File No. 160120. B - Former UP Railroad Corridor and Milwaukee River Parkway



Tilt view facing southeast



View from N. Milwaukee River Pkwy. facing north

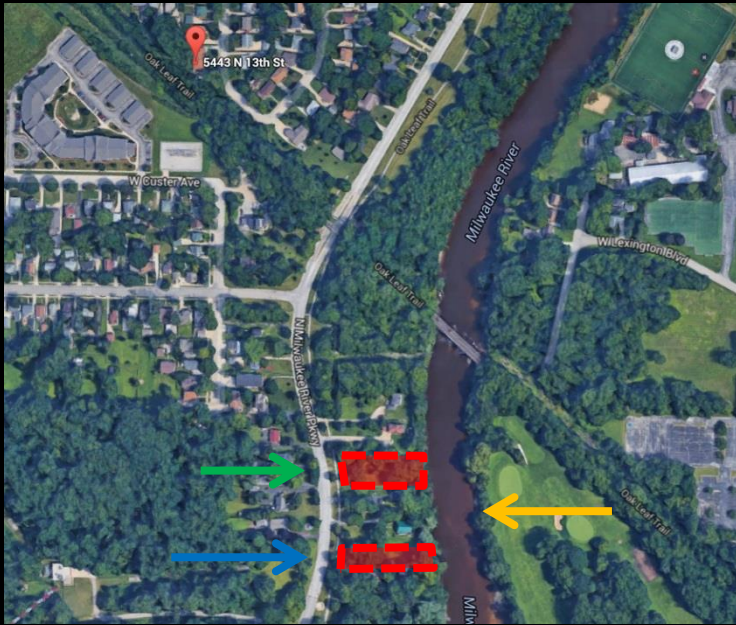


Tilt facing northwest

File No. 160120. B - Former UP Railroad Corridor and Milwaukee River Parkway



5258 N. Milwaukee River Pkwy. facing east



5212 N. Milwaukee River Pkwy. facing east

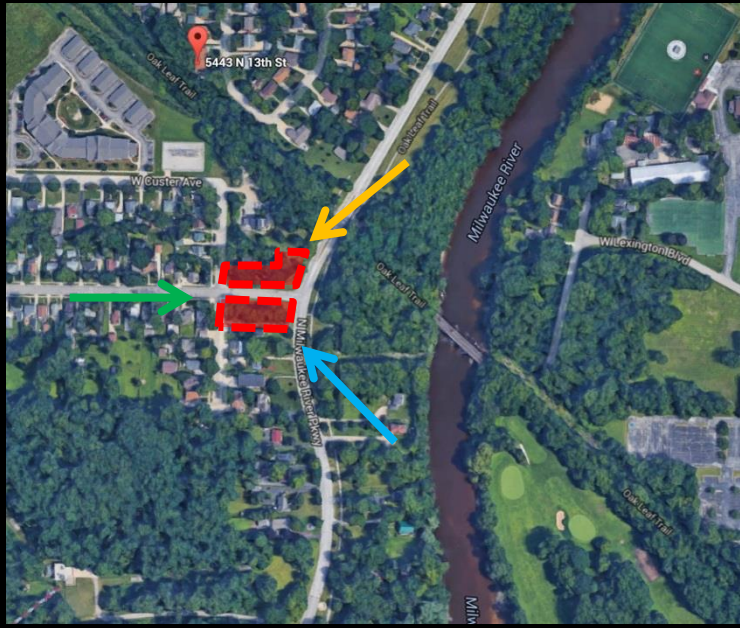


Tilt facing west

File No. 160120. B - Former UP Railroad Corridor and Milwaukee River Parkway



View from intersection of N. 13th and W. Lawn facing east

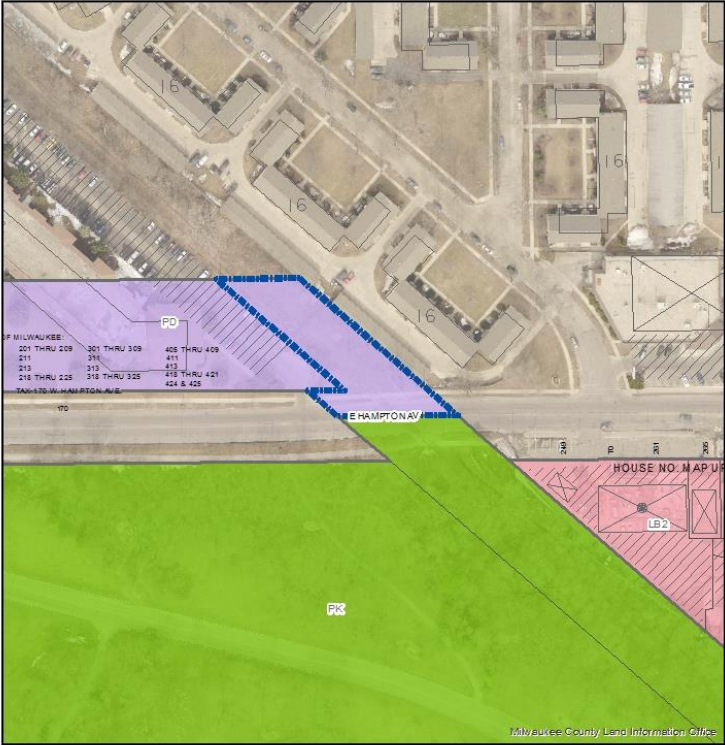


N. Milwaukee River Pkwy. facing northwest



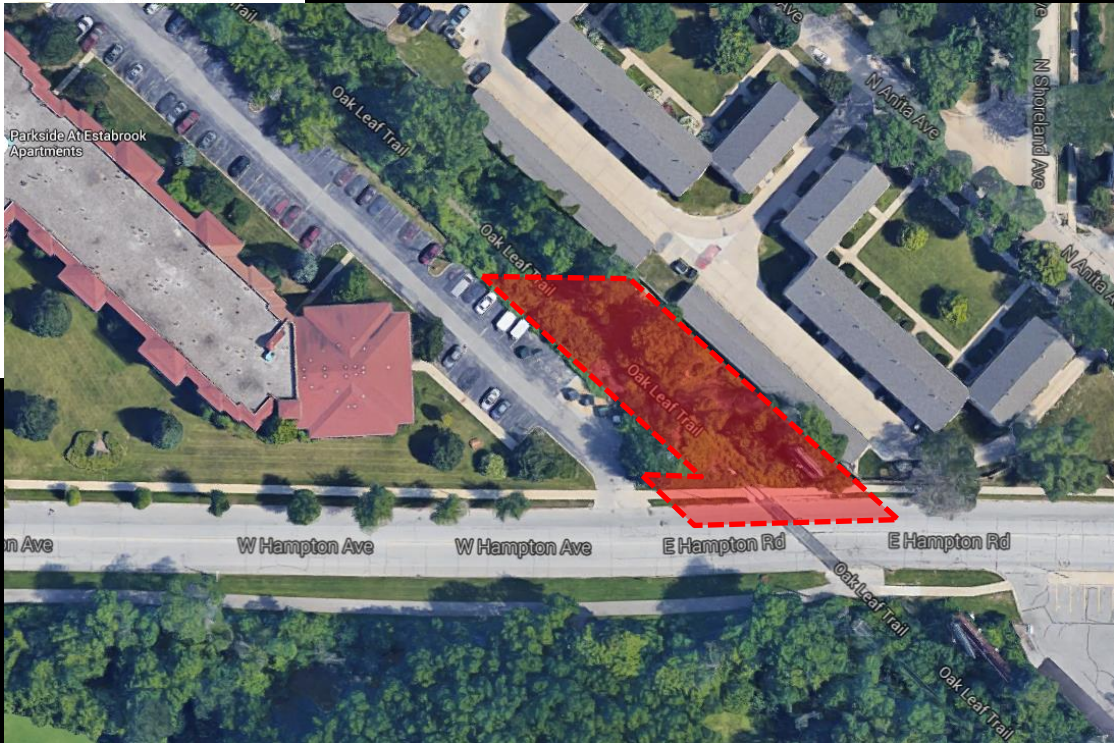
N. Milwaukee River Pkwy. facing southwest

File No. 160120. C - Former UP Railroad Corridor. 198 E. Hampton Ave.



FN 160120 C
 DPD to PK (part of former UP Railroad Corridor)
 July 2016

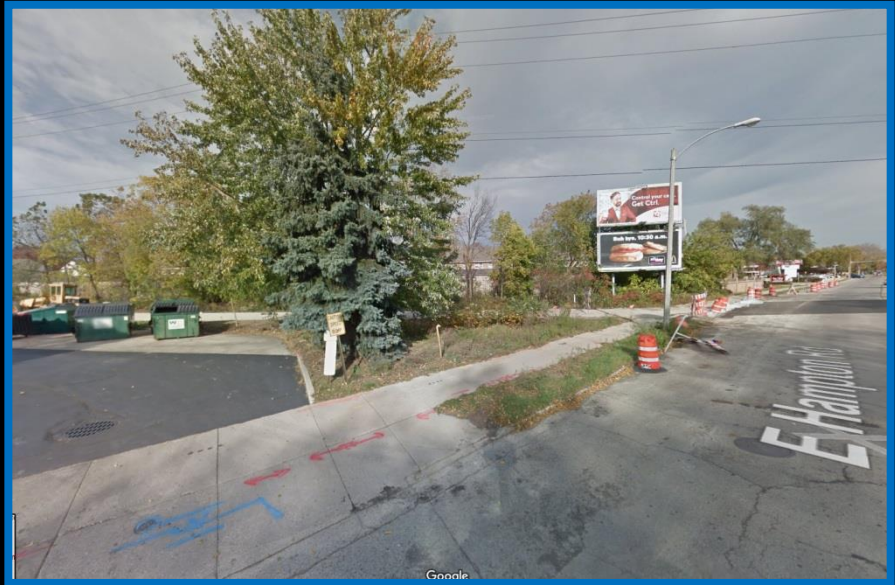
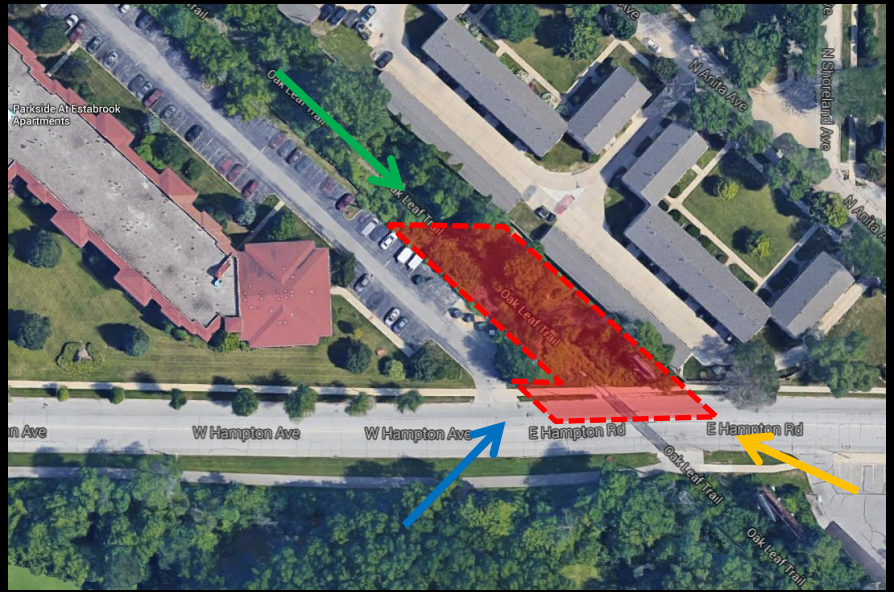
- Legend**
- Zoning Change Boundary
 - Zoning**
 - Commercial - Commercial Service
 - Commercial - Neighborhood Shopping
 - Commercial - Local Business
 - Commercial - Regional Business
 - Downtown
 - Industrial - Office
 - Industrial - Light
 - Industrial - Mixed
 - Industrial - Heavy
 - Residential - Single Family
 - Residential - Two Family
 - Residential - Multi-Family



File No. 160120. C - Former UP Railroad Corridor. 198 E. Hampton Ave.



Tilt view facing southeast

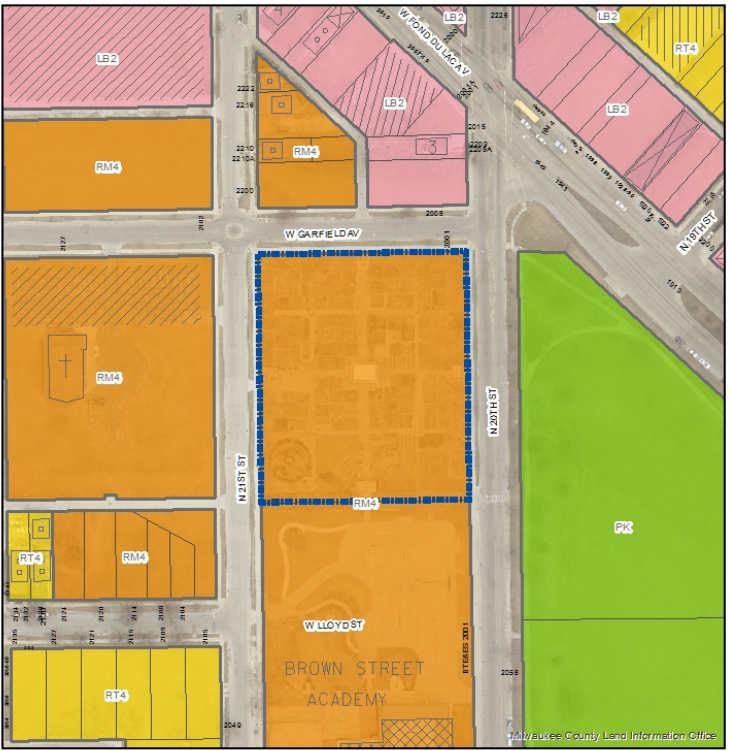


View from E. Hampton Ave. facing northeast



View from E. Hampton Ave. facing northwest

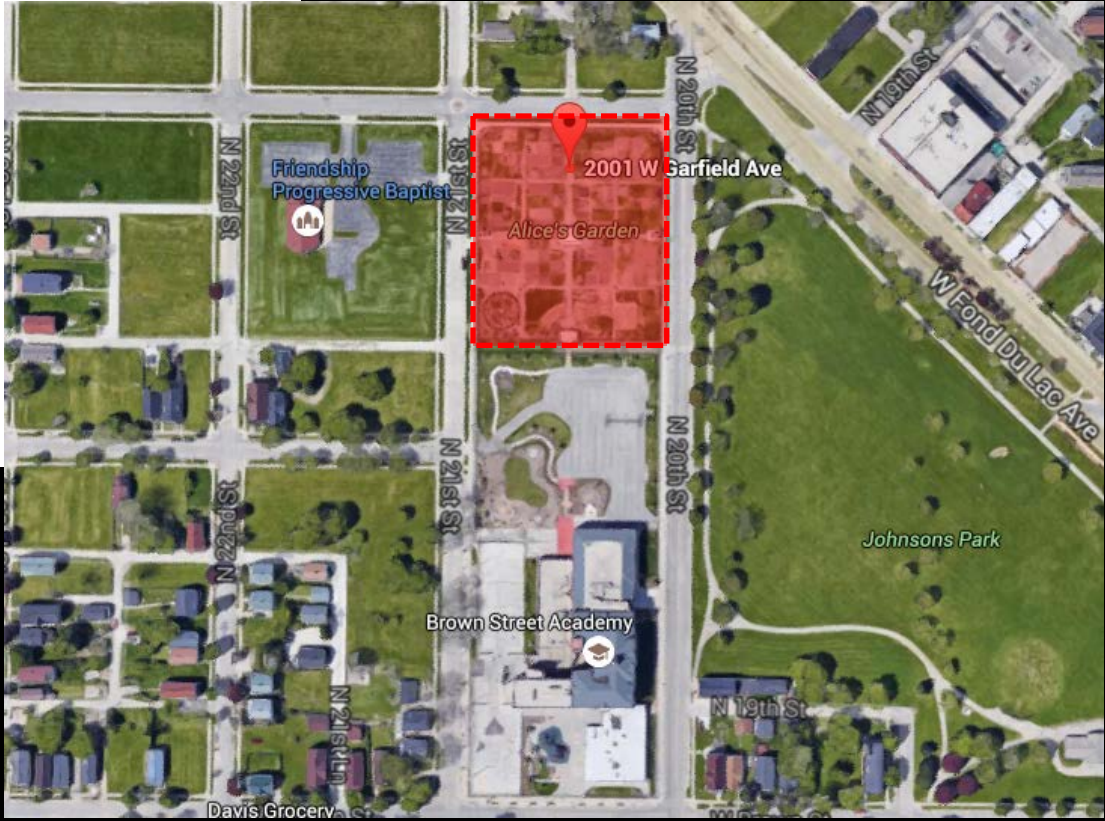
File No. 160120. D - Johnsons Park. 2001 W. Garfield Av.



FN 160120 D
 RM4 to PK (part of Johnsons Park)
 July 2016

Legend

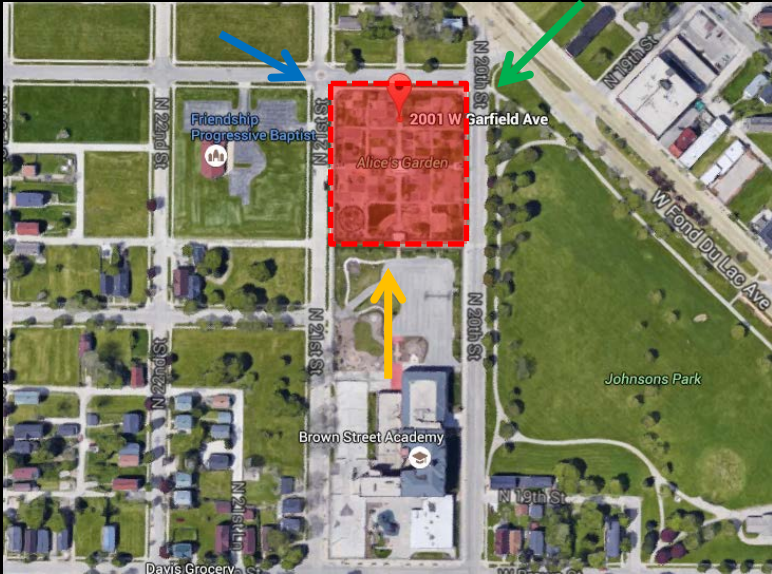
- Zoning Change Boundary
- Commercial - Commercial Service
- Commercial - Neighborhood Shopping
- Commercial - Local Business
- Commercial - Regional Business
- Downtown
- Industrial - Office
- Industrial - Light
- Industrial - Mixed



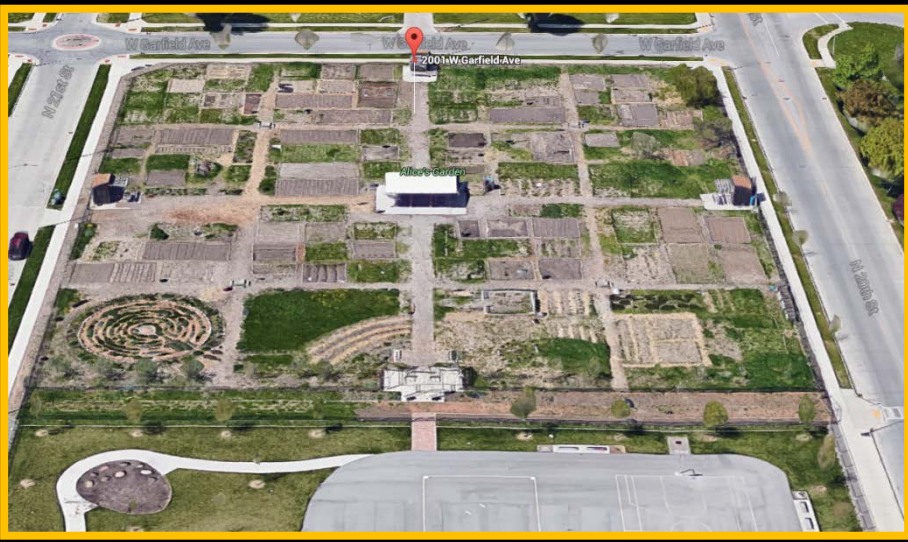
File No. 160120. D - Johnsons Park. 2001 W. Garfield Av.



View from N. 20th and W. Garfield Av. facing southwest

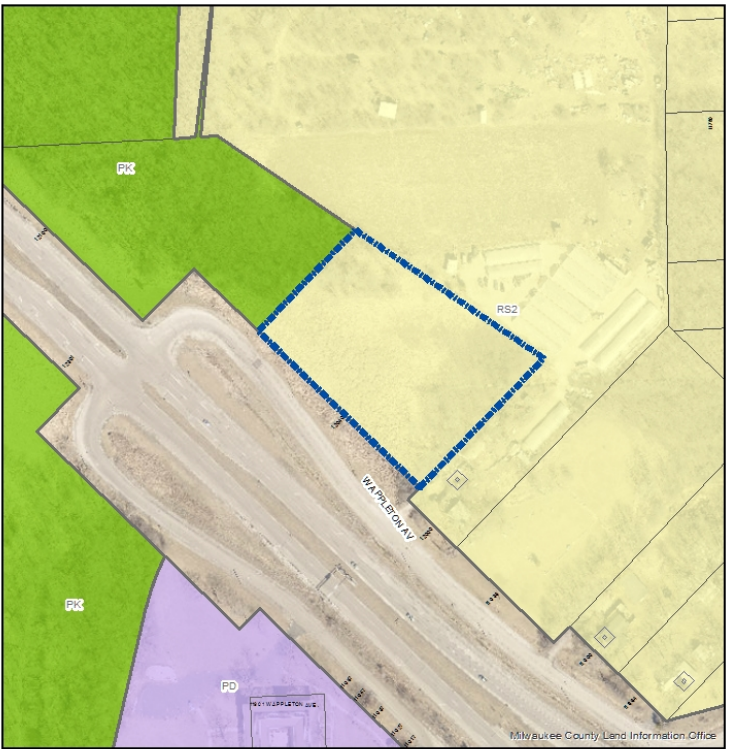


View from N. 21st and W. Garfield Av. facing southeast



Tilt view facing north

File No. 160120. E - Menomonee River Parkway. 12040 W. Appleton Av.



FN 160120 E
RS2 to PK (part of Menomonee River Parkway)
July 2016

- Legend**
- Zoning Change Boundary
 - Zoning**
 - Commercial - Commercial Service
 - Commercial - Neighborhood Shopping
 - Commercial - Local Business
 - Commercial - Regional Business
 - Downtown
 - Industrial - Office
 - Industrial - Light
 - Industrial - Medium
 - Industrial - Heavy
 - Residential - Single Family
 - Residential - Two Family
 - Residential - Multi-Family
 - Residential - Residence and Office
 - Special - Parks
 - Special - Institutional
 - Special - Planned Development
 - Special - Redevelopment District



File No. 160120. E - Menomonee River Parkway. 12040 W. Appleton Av.



Tilt view facing southwest

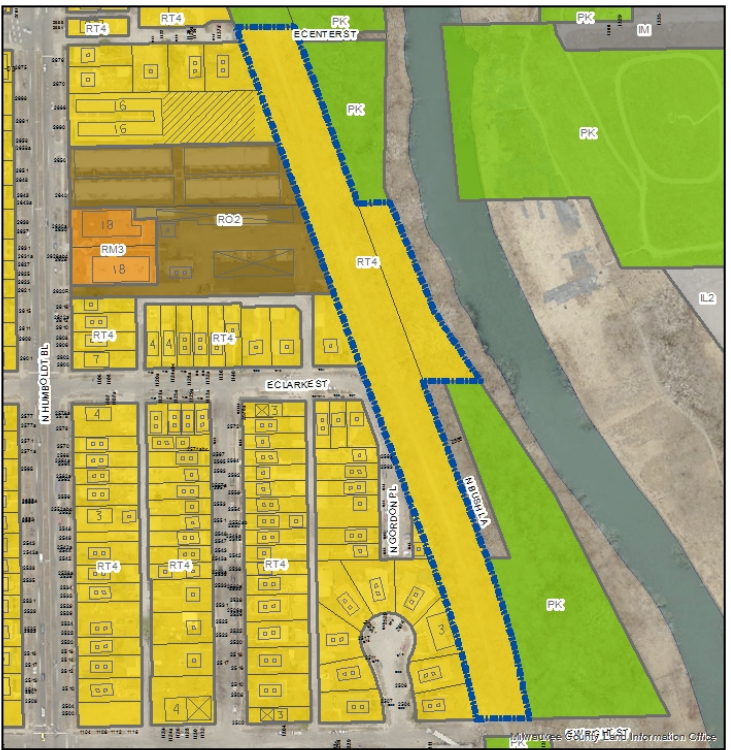


View from West Appleton Avenue facing east



View from West Appleton Avenue facing north

File No. 160120. F - Milwaukee River Parkway. 2620 N. Humboldt Bl; 1201 E. Center St.



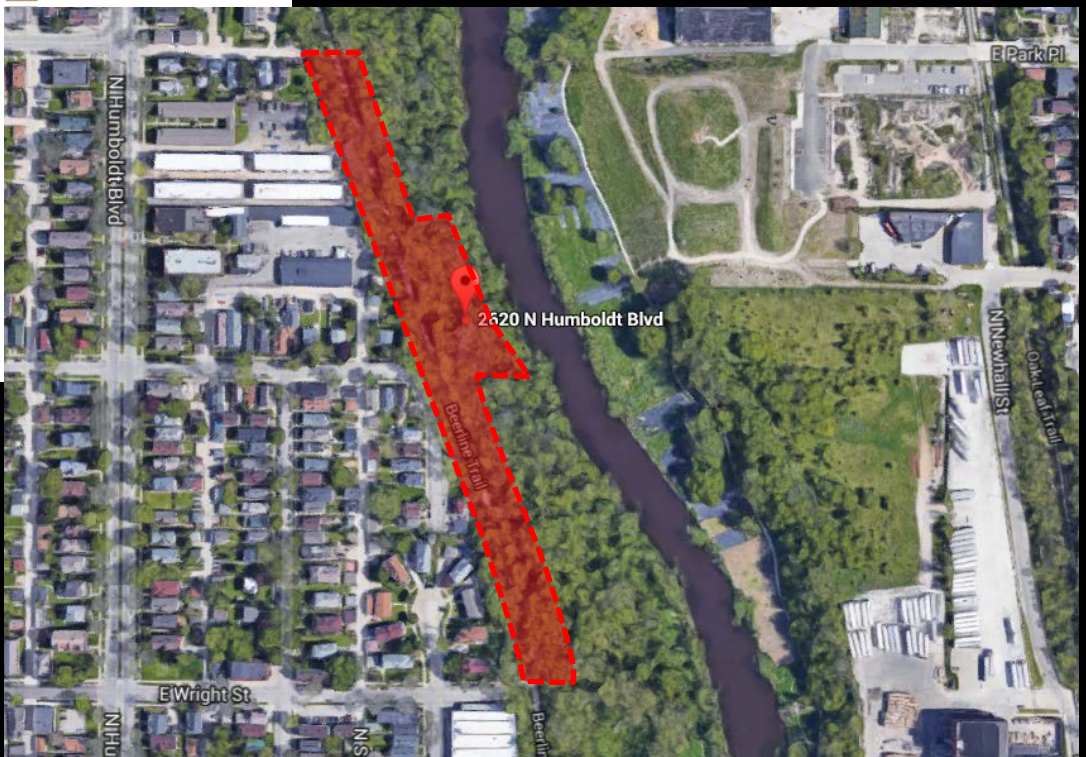
FN 160120 F
RT4 to PK (part of Milwaukee River Parkway)
July 2016

Legend

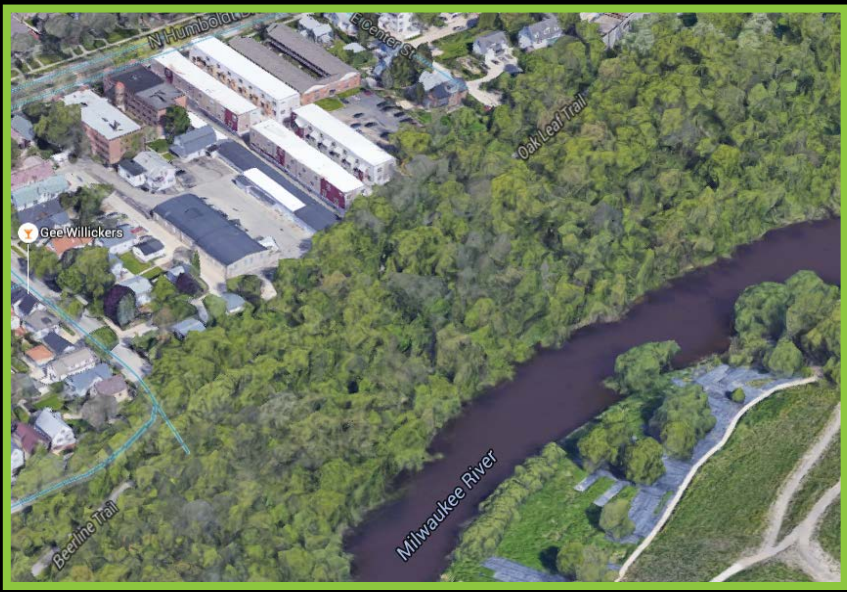
Zoning Change Boundary

Zoning

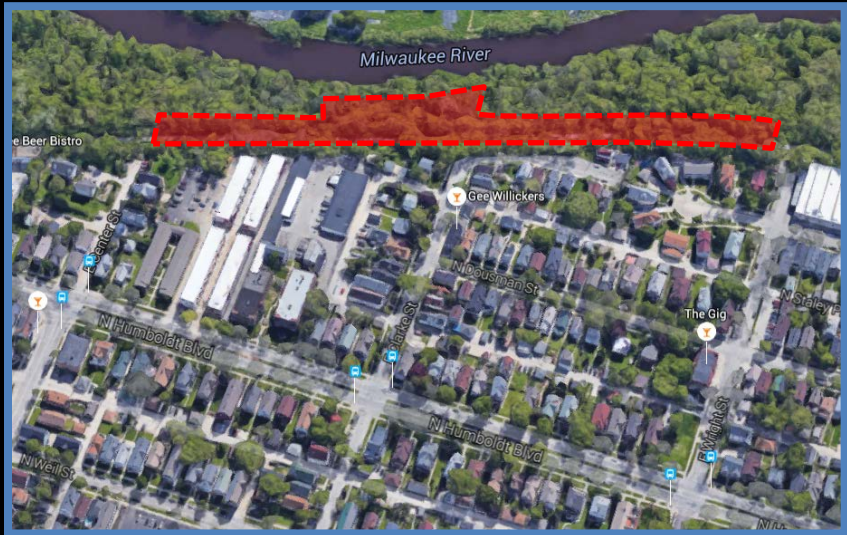
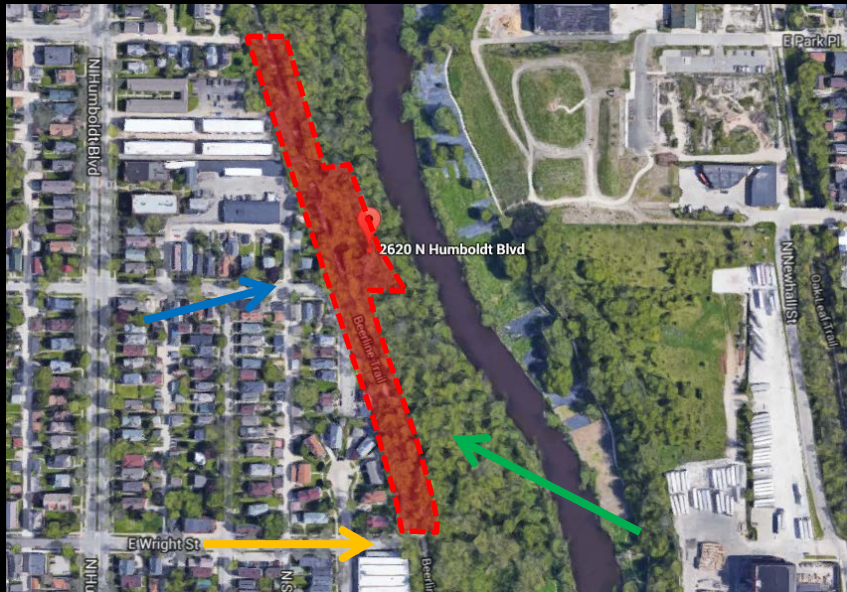
- Commercial - Commercial Service
- Commercial - Neighborhood Shopping
- Commercial - Local Business
- Commercial - Regional Business
- Downtown
- Industrial - Office
- Industrial - Light
- Industrial - Mixed
- Industrial - Heavy
- Residential - Single Family
- Residential - Two Family
- Residential - Multi-Family



File No. 160120. F - Milwaukee River Parkway. 2620 N. Humboldt Bl; 1201 E. Center St.



Tilt view facing northwest

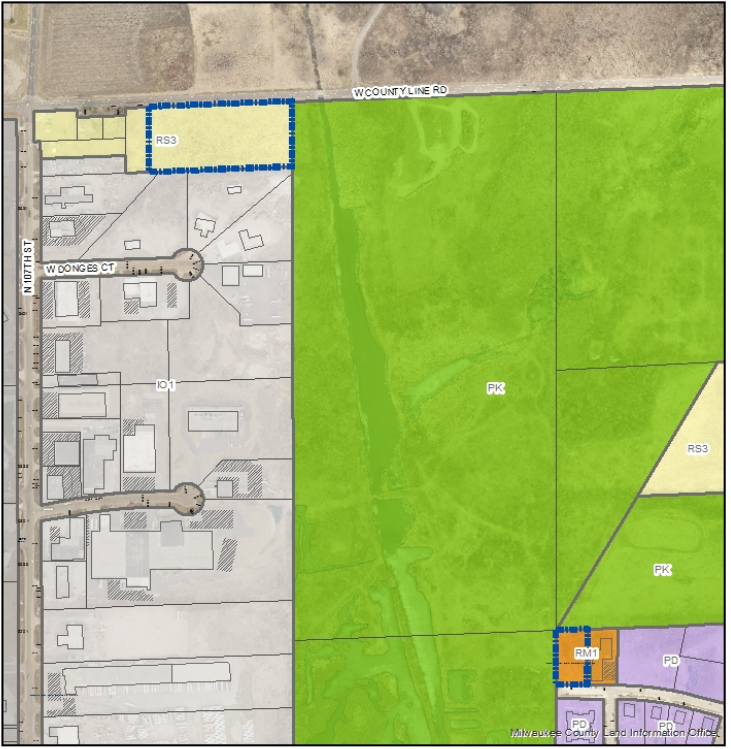


Tilt view facing northeast



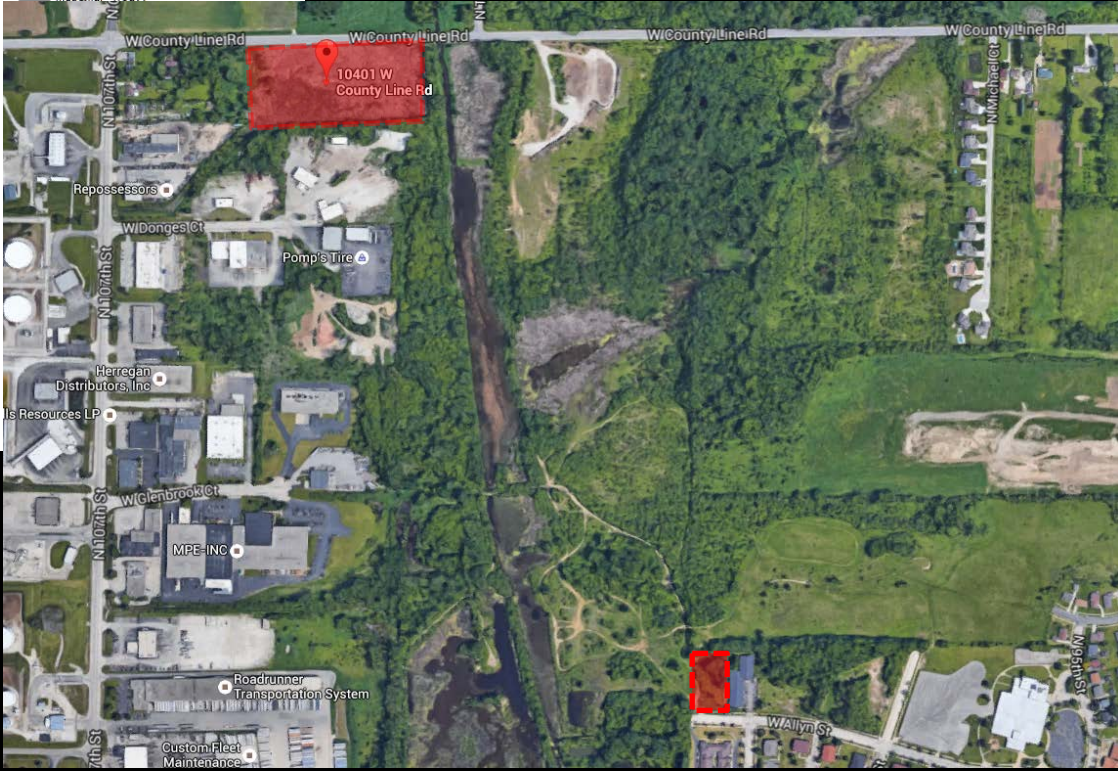
View from East Wright Street facing East (Entrance to Beerline Trail)

File No. 160120. G - Little Menomonee River Parkway. 10401 W. County Line Rd.; 9722 W. Allyn St.



FN 160120 G
 RS3 and RM1 to PK
 (part of Little Menomonee River Parkway)
 July 2016

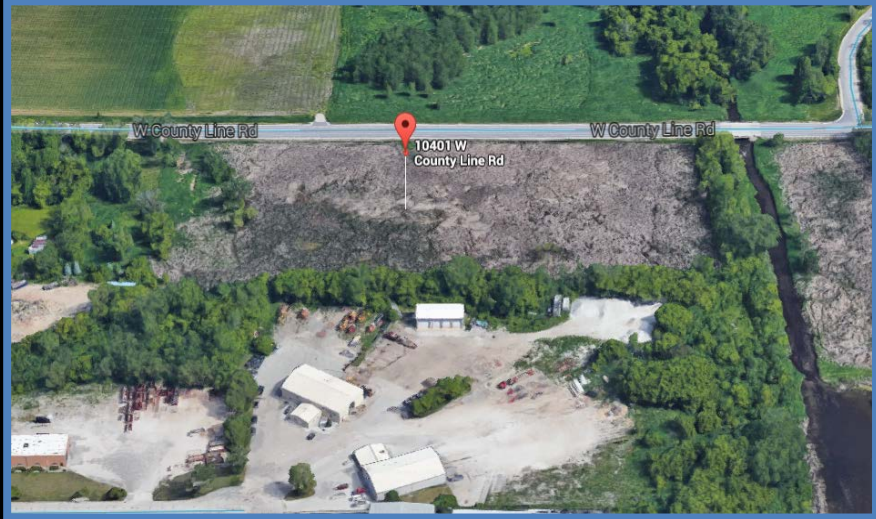
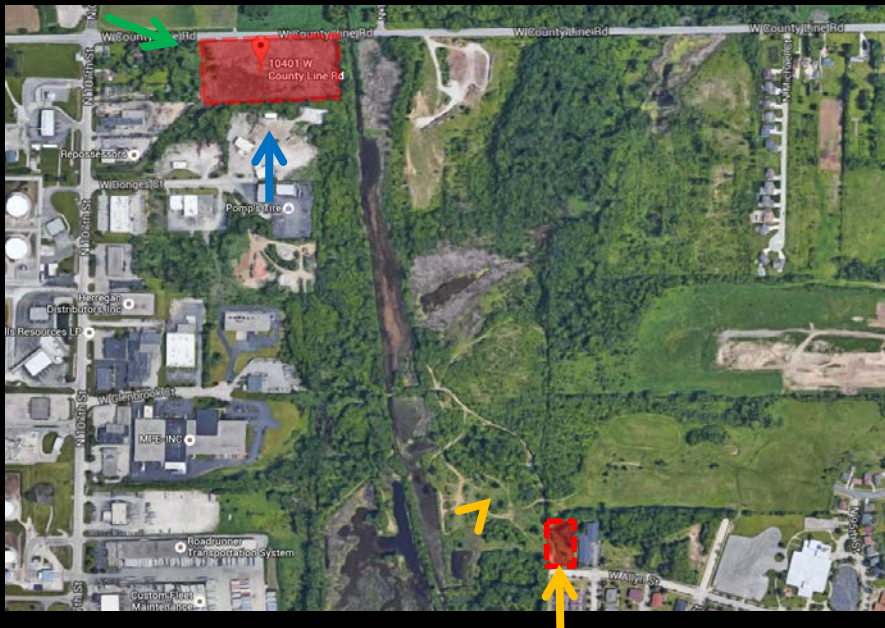
- Legend**
- Zoning Change Boundary
 - Zoning**
 - Commercial - Commercial Service
 - Commercial - Neighborhood Shopping
 - Commercial - Local Business
 - Commercial - Regional Business
 - Downtown
 - Industrial - Office
 - Industrial - Light
 - Industrial - Mixed
 - Industrial - Heavy



File No. 160120. G - Little Menomonee River Parkway. 10401 W. County Line Rd.; 9722 W. Allyn St.



View from northwest lot corner on County Line Road facing southeast



Tilt view of W. County Line Road facing North



Tilt view of West Allyn Street facing north