

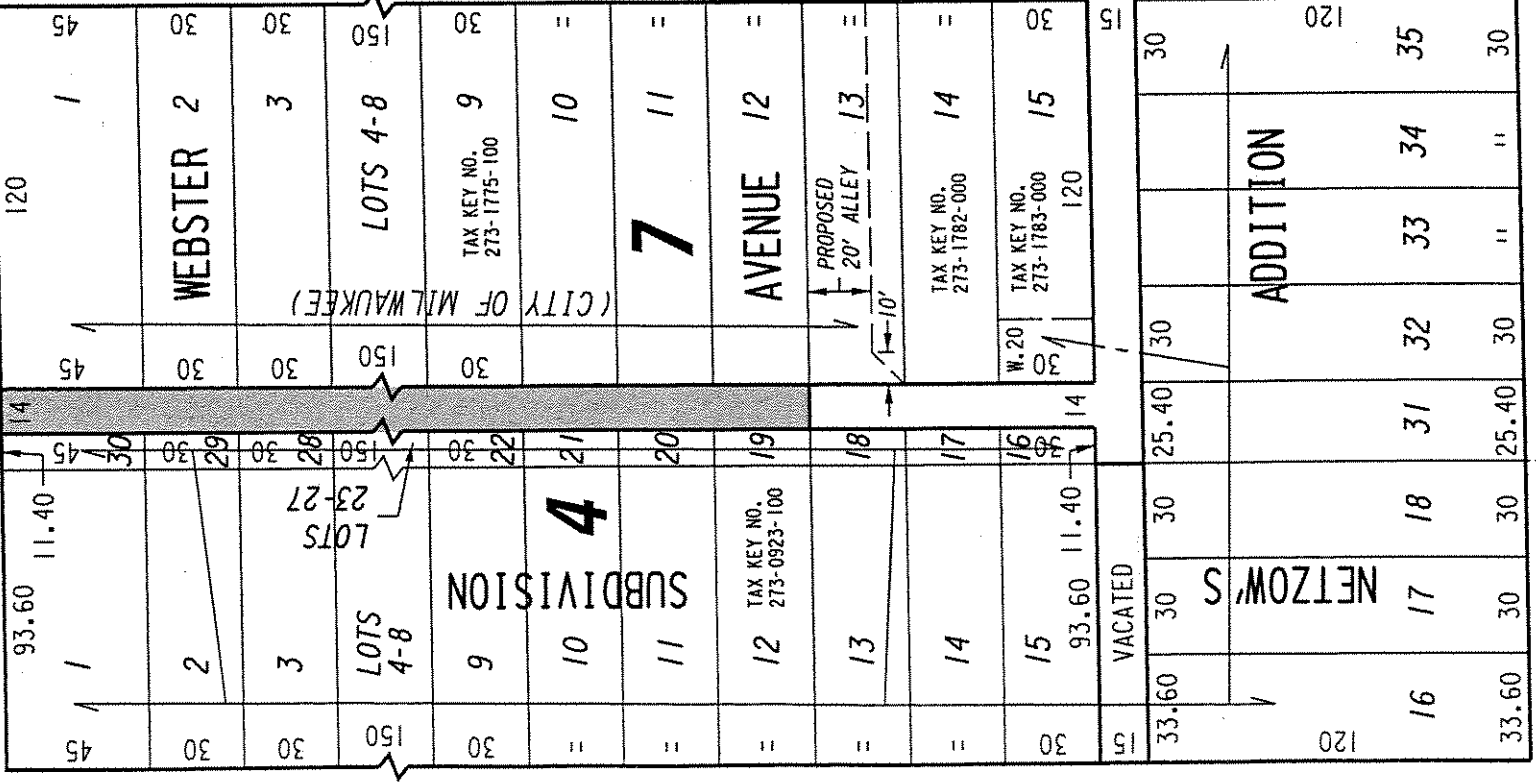
273

N.E. 1/4 SEC. 8, T.7N., R.22E.

**E. Nash**

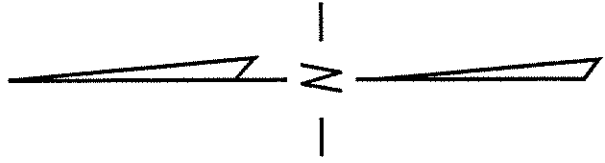
(60' R.O.W.)

**St.**



**St.**

(70' R.O.W.)



(70' R.O.W.)

**N. 1st**

**N. Palmer**

33

33

**E. Keefe**

(66' R.O.W.)

**Ave.**

1/4 SEC. LINE

PORTION OF PUBLIC ALLEY PROPOSED TO BE VACATED

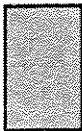


EXHIBIT "A"

FILE NO. 040954

INFRASTRUCTURE SERVICES DIVISION

MILWAUKEE, WISCONSIN

ASSIGNED TO: P.A. VELLA

CH'K'D. BY: W.E. FUCHS

DRAWN BY: P.A.V.

DATE: NOV. 13, 2006

PROJECT/GRANT NO.: WK52337212

SCALE: 1" = 60'

APPROVED BY:

*maria Lindholm*

CENTRAL DRAFTING & RECORDS MANAGER

*W. E. Fuchs*

CITY ENGINEER