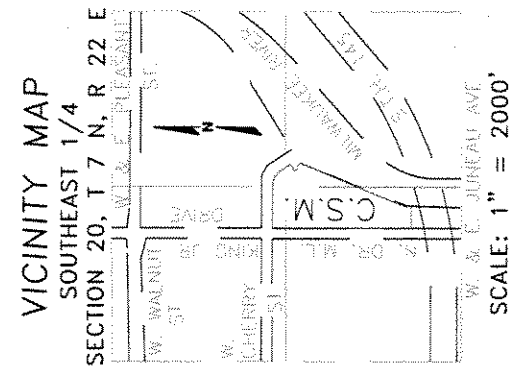
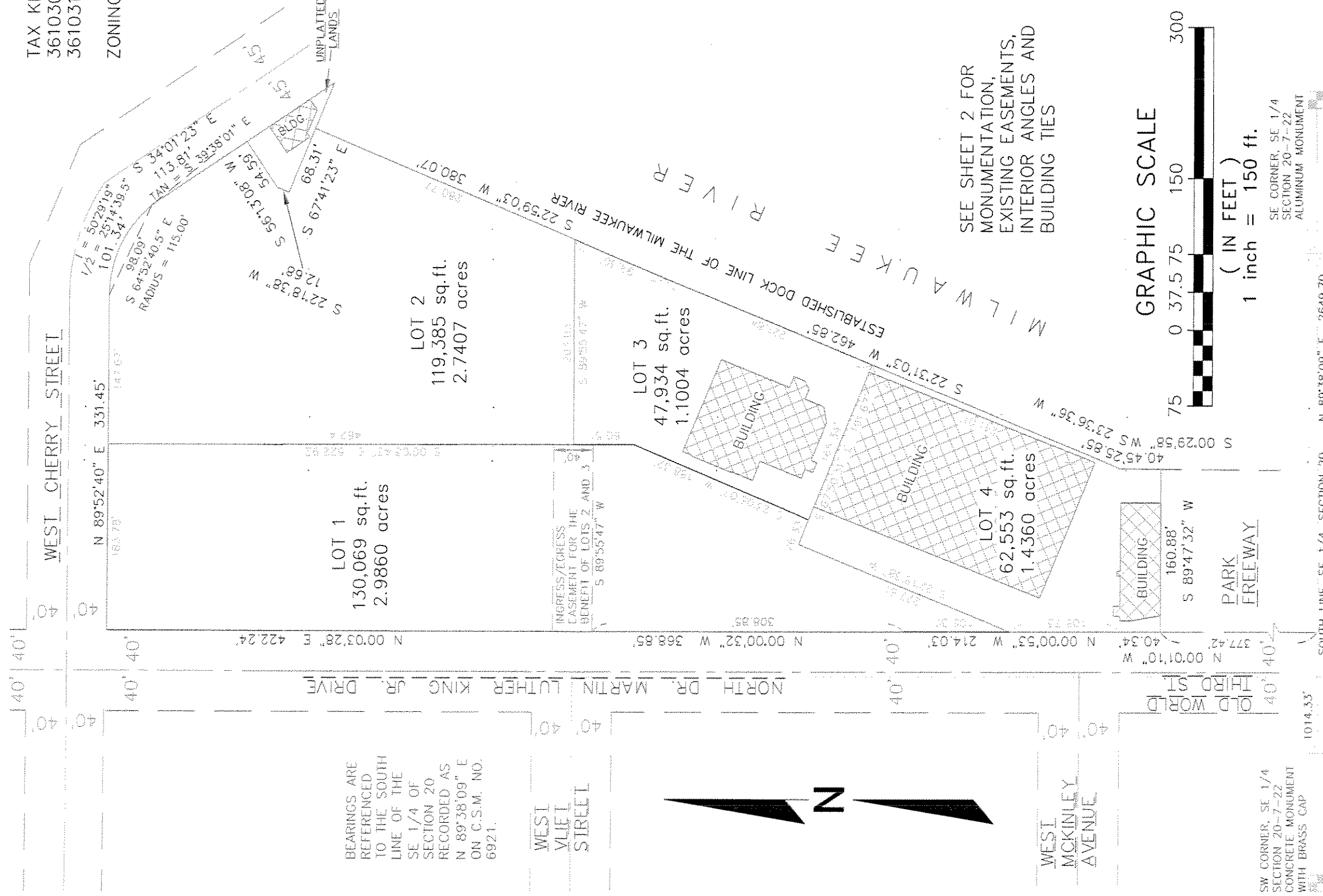


CERTIFIED SURVEY MAP NO.

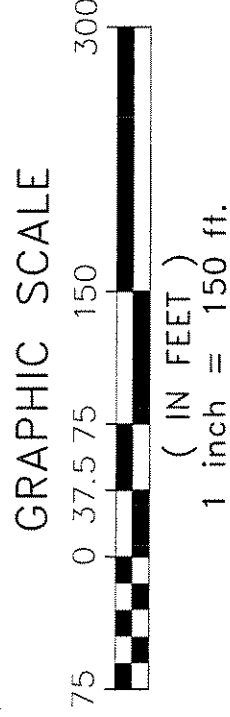
A DIVISION OF LOTS 1 THROUGH 13 IN BLOCK 30, LOTS 1 THROUGH 10 IN BLOCK 31, LOTS 1 THROUGH 11 IN BLOCK 32, LOTS 1 THROUGH 3 IN BLOCK 33, LOT 1 IN BLOCK 40, THE VACATED ALLEYS IN BLOCKS 30, 31 AND 32, VACATED NORTH COMMERCE STREET, WEST MCKINLEY AVENUE AND WEST VLIET STREET ADJACENT TO BLOCKS 30, 31, 32, 33 AND 40 ALL IN PLAT OF THE TOWN OF MILWAUKEE ON THE WEST SIDE OF THE RIVER AND LANDS ALL IN THE NORTHEAST 1/4, NORTHWEST 1/4, SOUTHWEST 1/4 AND SOUTHEAST 1/4 OF THE SOUTHEAST 1/4 OF SECTION 20, TOWN 7 NORTH, RANGE 22 EAST, IN THE CITY OF MILWAUKEE, MILWAUKEE COUNTY, WISCONSIN

TAX KEY NOS. 3610304111,
3610308100, 3610309100,
3610310110 AND 3610314110

ZONING: C9BA



SEE SHEET 2 FOR
MONUMENTATION,
EXISTING EASEMENTS,
INTERIOR ANGLES AND
BUILDING TIES



SW CORNER, SE 1/4
SECTION 20-7-22
ALUMINUM MONUMENT

**National
Survey &
Engineering**

A Division of R.A. Smith & Associates, Inc.



262-781-1000
Fax 262-797-7373
16745 W. Bluemound Road
Suite 200
Brookfield, WI 53005-5938
www.nsae.com

S:\Studio2\05620-01\Drawings\Consulte
CS101L15.dwg\Model

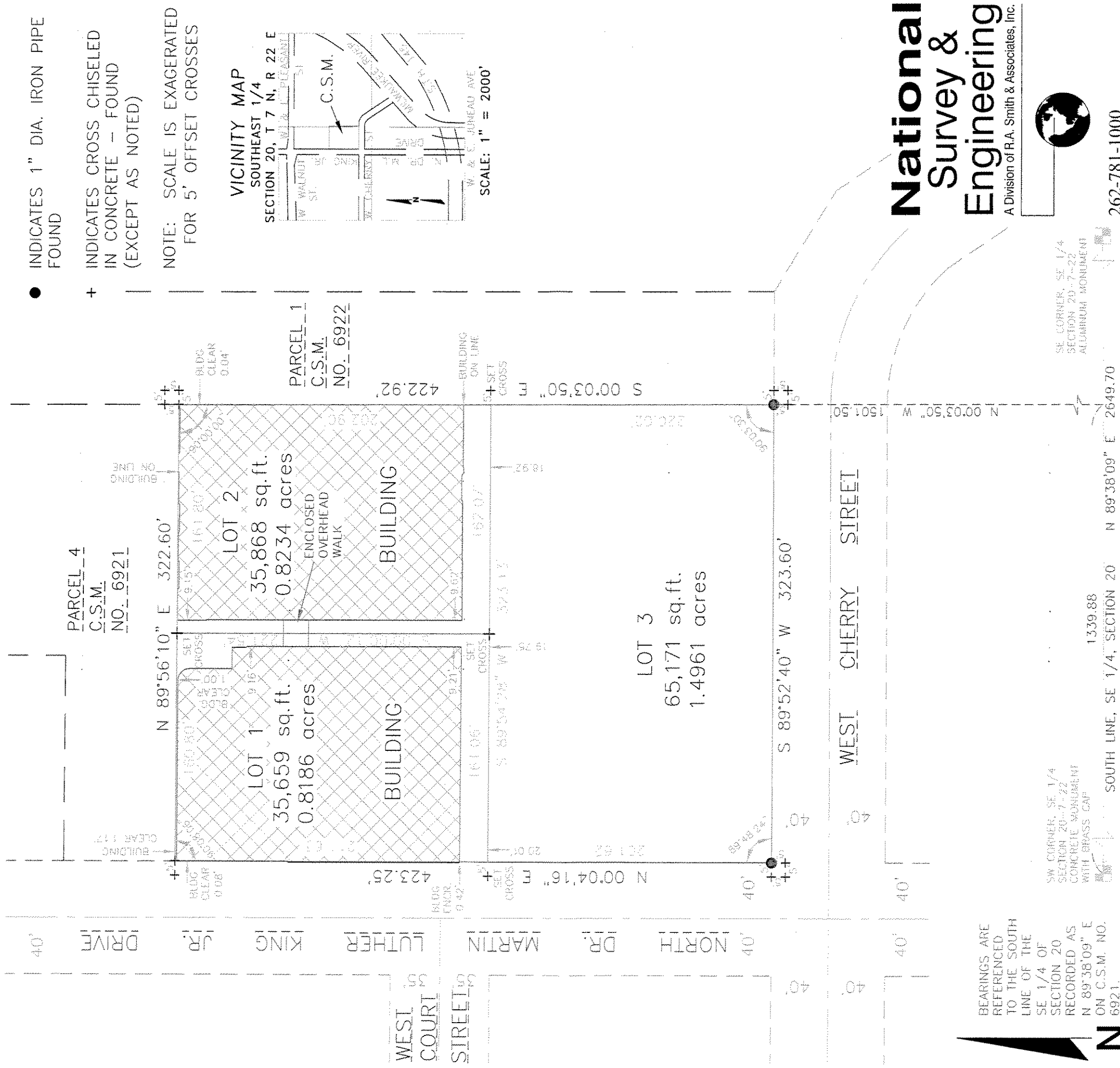
SHEET 1 OF 4 SHEETS

CERTIFIED SURVEY MAP NO.

A DIVISION OF PARCEL 1 OF CERTIFIED SURVEY MAP NO. 4968 AND PARCELS 1, 2 AND 3 OF CERTIFIED SURVEY MAP NO. 6921 IN THE NORTHEAST 1/4 AND NORTHWEST 1/4 OF THE SOUTHWEST 1/4 OF SECTION 20, TOWN 7 NORTH, RANGE 22 EAST, IN THE CITY OF MILWAUKEE, MILWAUKEE COUNTY, WISCONSIN

TAX KEY NOS. 3611831000, 3611951000, 3611952000 AND 3611953000

ZONING: C9C



GRAPHIC SCALE



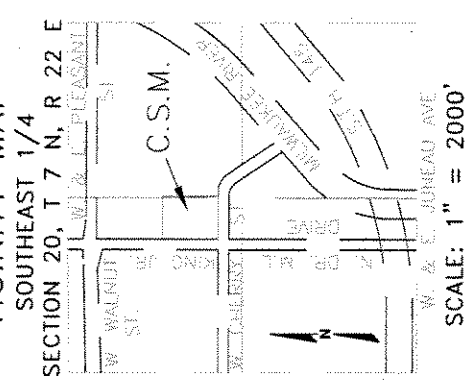
(IN FEET)

1 inch = 100 ft.

- INDICATES 1" DIA. IRON PIPE FOUND
- + INDICATES CROSS CHISELED IN CONCRETE -- FOUND (EXCEPT AS NOTED)

NOTE: SCALE IS EXAGGERATED FOR 5' OFFSET CROSSES

VICINITY MAP



National Survey & Engineering
A Division of R.A. Smith & Associates, Inc.



262-781-1000
Fax 262-797-7373
16745 W. Bluemound Road
Suite 200
Brookfield, WI 53005-5938
www.nsae.com

S:\Studio2\05620-01\Drawings\Constul CS101LJH.DWG\GModel