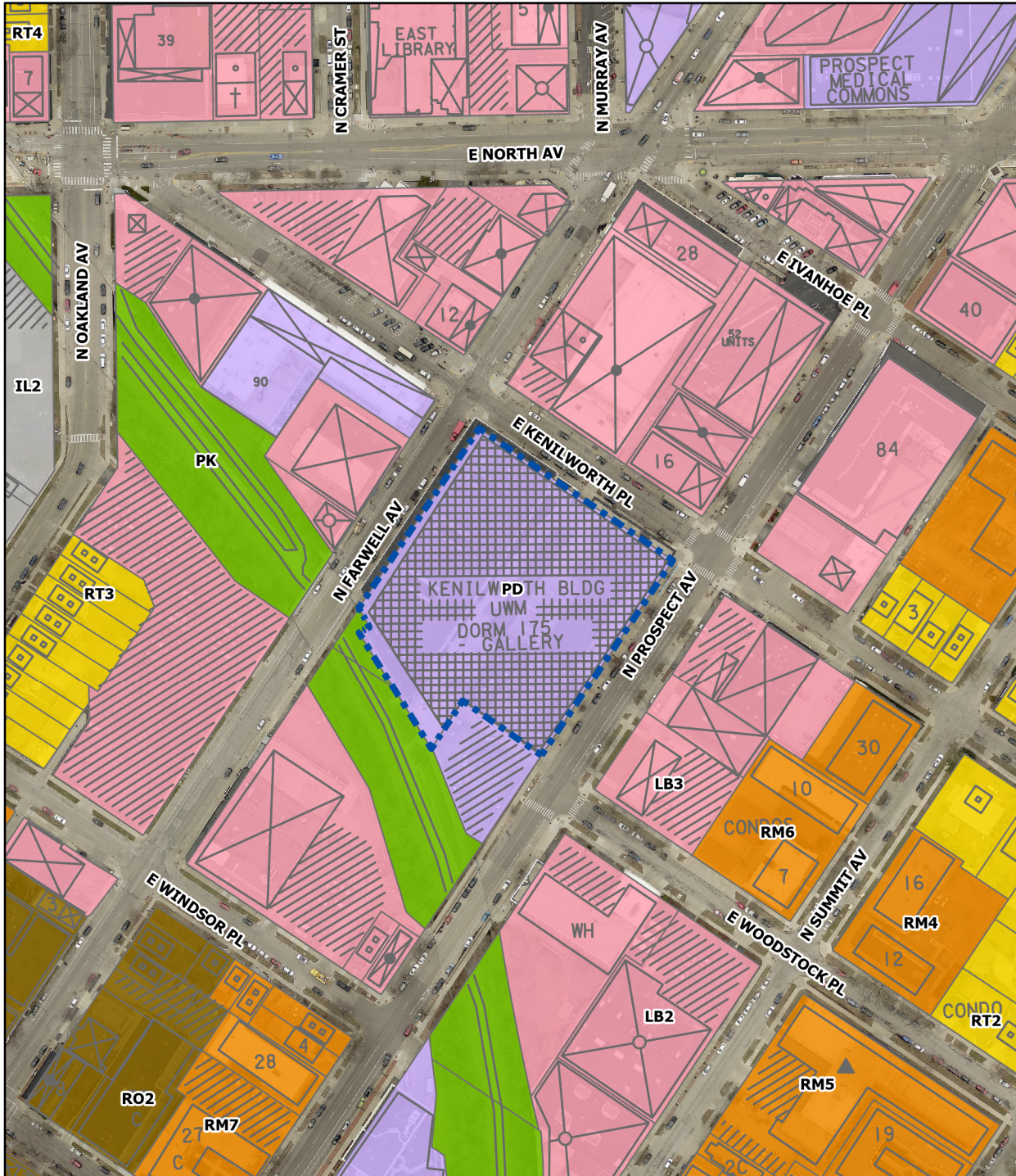


**File No. 231935**  
**1st Amend. to DPD**  
**Kenilworth Building**  
**2185 N. Prospect Av.**



**LEGEND**

SUBJECT SITE

**Zoning**

- RESIDENTIAL: SINGLE-FAMILY
- RESIDENTIAL: TWO-FAMILY
- RESIDENTIAL: MULTI-FAMILY
- RESIDENTIAL AND OFFICE DISTRICTS
- CENTRAL BUSINESS DISTRICT: CIVIC ACTIVITY
- CENTRAL BUSINESS DISTRICT: HIGH-DENSITY RESIDENTIAL
- CENTRAL BUSINESS DISTRICT: MAJOR RETAIL
- CENTRAL BUSINESS DISTRICT: MIXED ACTIVITY
- CENTRAL BUSINESS DISTRICT: NEIGHBORHOOD RETAIL
- CENTRAL BUSINESS DISTRICT: OFFICE AND SERVICE
- CENTRAL BUSINESS DISTRICT: RESIDENTIAL AND SPECIALTY USE
- CENTRAL BUSINESS DISTRICT: WAREHOUSING AND LIGHT MANUFACTURING
- COMMERCIAL: NEIGHBORHOOD SHOPPING
- COMMERCIAL: LOCAL BUSINESS
- COMMERCIAL: COMMERCIAL SERVICE
- COMMERCIAL: REGIONAL BUSINESS
- INDUSTRIAL: COMMERCIAL
- INDUSTRIAL: OFFICE
- INDUSTRIAL: LIGHT
- INDUSTRIAL: MIXED
- INDUSTRIAL: HEAVY
- SPECIAL: PARKS
- SPECIAL: INSTITUTIONAL
- SPECIAL: PLANNED DEVELOPMENT
- SPECIAL: REDEVELOPMENT
- UNKNOWN OR PENDING

N



0 170 340 Feet