



# CERTIFICATE OF APPROPRIATENESS APPLICATION FORM

Incomplete applications will not be processed for Commission review.

Please print legibly.

**1. HISTORIC NAME OF PROPERTY OR HISTORIC DISTRICT: (if known)**

Pabst Brewery

**ADDRESS OF PROPERTY:**

1036 W. Juneau Avenue, Milwaukee, WI 53233

*Disc e h  
2/17/16*

**2. NAME AND ADDRESS OF OWNER:**

Name(s): Blue Ribbon Management (Landlord) / SafeNet Consulting (Tenant)

Address: 735 W. Wisconsin Avenue, Suite 610

City: Milwaukee

State: WI

ZIP: 53233

Email: shepherd.hao@blueribbonmgt.com

Telephone number (area code & number) Daytime: 217-607-6008

Evening: \_\_\_\_\_

**3. APPLICANT, AGENT OR CONTRACTOR: (if different from owner)**

Name(s): Riley Construction (Attn: Amanda Toepel)

Address: 5301 99th Avenue

City: Kenosha

State: WI

ZIP Code: 53144

Email: amandat@rileycon.com

Telephone number (area code & number) Daytime: 262-658-4381ext.152

Evening: 262-287-1830

**4. ATTACHMENTS: (Because projects can vary in size and scope, please call the HPC Office at 414-286-5712 for submittal requirements)**

**A. REQUIRED FOR MAJOR PROJECTS:**

Photographs of affected areas & all sides of the building (annotated photos recommended)

Sketches and Elevation Drawings (1 full size and 1 reduced to 11" x 17" or 8 1/2" x 11")  
A digital copy of the photos and drawings is also requested.

Material and Design Specifications (see next page)

**B. NEW CONSTRUCTION ALSO REQUIRES:**

Floor Plans (1 full size and 1 reduced to a maximum of 11" x 17")

Site Plan showing location of project and adjoining structures and fences

**PLEASE NOTE: YOUR APPLICATION CANNOT BE PROCESSED UNLESS BOTH PAGES OF THIS FORM ARE PROPERLY COMPLETED AND SIGNED.**

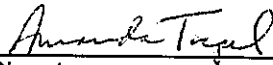
5. **DESCRIPTION OF PROJECT:**

Tell us what you want to do. Describe all proposed work including materials, design, and dimensions. Additional pages may be attached.

Riley Construction is requesting approval to install tenant signage for SafeNet Consulting on the existing monument sign located in front of the Pabst Professional Center at 1036 W. Juneau Avenue. The existing monument sign is a decorative wood slat structure mounted on a concrete retaining wall with PABST PROFESSIONAL CENTER in large brushed aluminum letters, mounted on studs. We propose to match this signage, in a smaller font, for SafeNet's signage, similar to the way the signage was provided for tcf commercial banking.

The signage for SafeNet Consulting will match the company's logo, reading "SafeNet" with a circular design element around the letters "S" and "a" (see attached diagram for layout and dimensions). The sign will be constructed of 1/4" thick brushed finish aluminum letters, which will be mounted on studs, projecting from the slat wall to match the surrounding signage. The sign will be installed below the sign for tcf commercial banking.

6. **SIGNATURE OF APPLICANT:**

  
Signature

Amanda Toepel, Riley Construction  
Please print or type name

2-17-16  
Date

This form and all supporting documentation **MUST** arrive by 12:00 noon on the deadline date established to be considered at the next Historic Preservation Commission Meeting. Any information not provided to staff in advance of the meeting will not be considered by the Commission during their deliberation. Please call if you have any questions and staff will assist you.

**Hand Deliver or Mail Form to:**  
Historic Preservation Commission  
City Clerk's Office  
200 E. Wells St. Room B-4  
Milwaukee, WI 53202

**PHONE: (414) 286-5722**

**FAX: (414) 286-3004**

[www.milwaukee.gov/hpc](http://www.milwaukee.gov/hpc)

Or click the **SUBMIT** button to automatically email this form for submission.

**SUBMIT**

CLIENT  
SAFENET CONSULTING  
MILWAUKEE, WI

**GRAPHIC HOUSE**

5204 Packer Drive, Wausau, WI 54401 715-842-0492  
www.graphichouseinc.com

DATE: 1/21/16  
SHEET NUMBER: 0959  
SHEET TITLE: SIGNAGE  
SHEET NUMBER: XX-XX

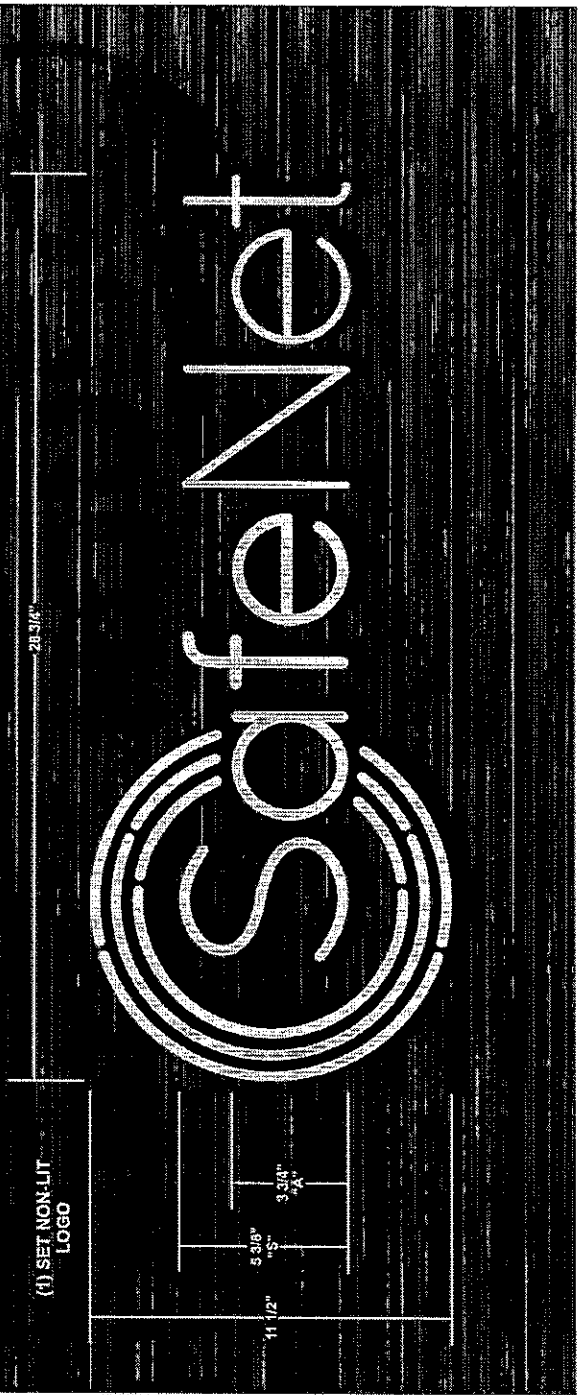
1. SET NON-LIT LOGO  
7/4" THICK ALUM. W/ BRUSHED FINISH ON FACES (VERTICAL BRUSH)  
STUD MOUNTED 1/2" OFF WOOD BATTEN SCREEN

EXACT PLACEMENT TBD



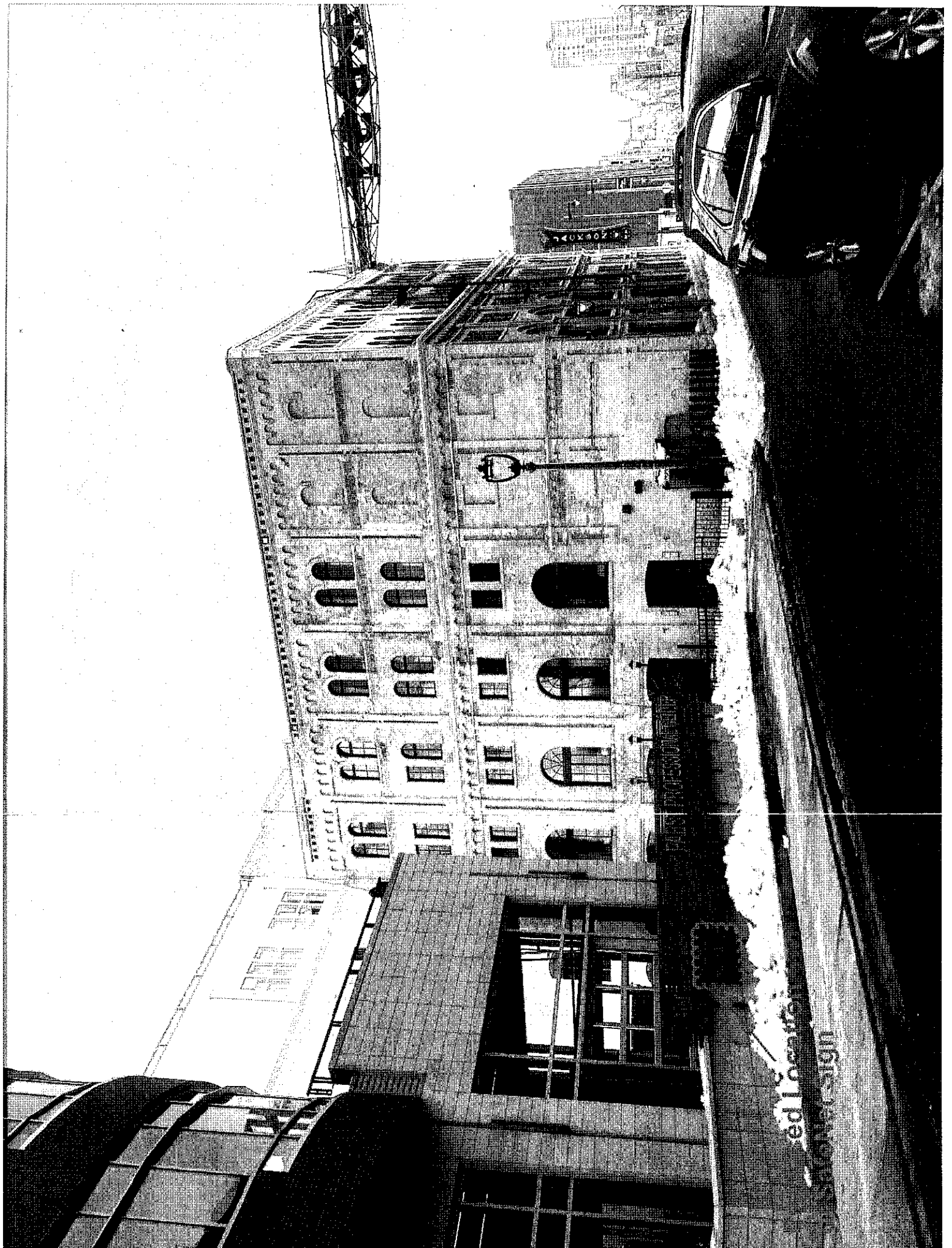
NOTE FROM RILEY CONSTRUCTION:  
PROPOSED SIGN LOCATION  
(Per BRM's request in 1/26/16 email)

FIELD VERIFY REQUIRED TO DETERMINE EXACT STUD PLACEMENT



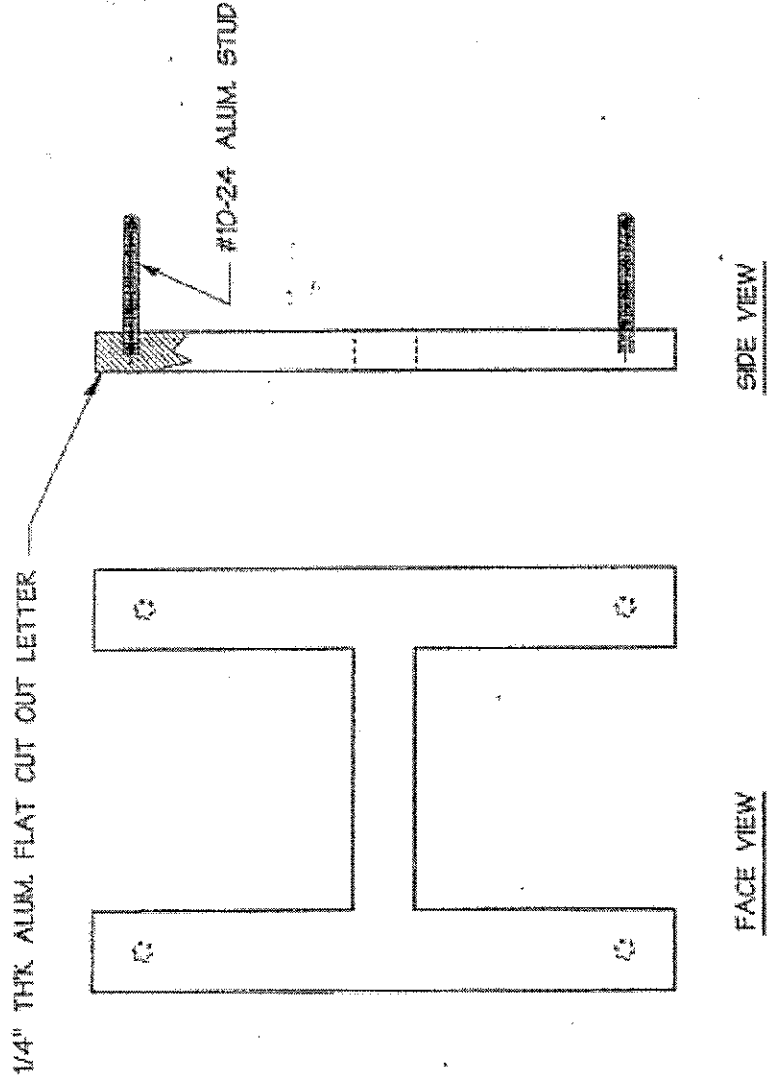
CLIENT HAS IDENTIFIED THE LOCATION IN WHICH THE SIGNAGE IS TO BE INSTALLED. THE CLIENT HAS THE SOLE RESPONSIBILITY FOR THE STRUCTURAL INTEGRITY OF ALL EXISTING STRUCTURES TO SUPPORT THE SIGNAGE.

ALL RIGHTS RESERVED. THIS ARCHITECTURAL DRAWING IS THE PROPERTY OF GRAPHIC HOUSE INC. AND IS NOT TO BE REPRODUCED OR TRANSMITTED IN ANY FORM OR BY ANY MEANS, ELECTRONIC OR MECHANICAL, INCLUDING PHOTOCOPYING, RECORDING, OR BY ANY INFORMATION STORAGE AND RETRIEVAL SYSTEM, WITHOUT THE WRITTEN PERMISSION OF GRAPHIC HOUSE INC. THE PROJECT IS SUBJECT TO CHANGE WITHOUT NOTICE. ALL DIMENSIONS ARE IN INCHES UNLESS OTHERWISE SPECIFIED. ALL DIMENSIONS ARE TO FACE UNLESS OTHERWISE SPECIFIED. ALL DIMENSIONS ARE TO FACE UNLESS OTHERWISE SPECIFIED. ALL DIMENSIONS ARE TO FACE UNLESS OTHERWISE SPECIFIED. ALL DIMENSIONS ARE TO FACE UNLESS OTHERWISE SPECIFIED.



ed Locarri  
Stone Design

FLAT CUT OUT ALUMINUM LETTER FLUSH MOUNTED





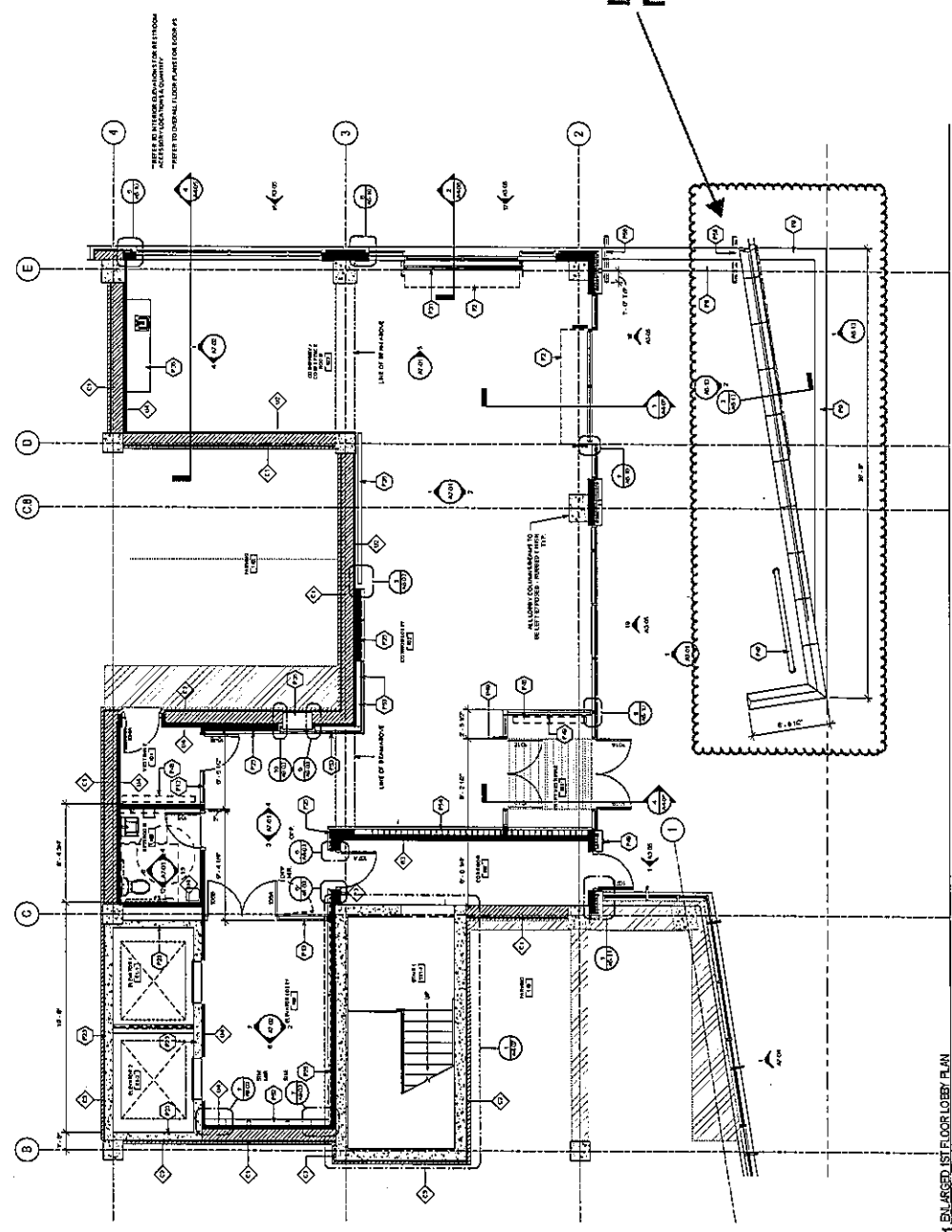
SCOPE CONSTRUCTION DOCUMENTS

GENERAL NOTES

1. SEE ALL NOTES FOR THIS PROJECT FOR ADDITIONAL INFORMATION.
2. ALL WORK SHALL BE IN ACCORDANCE WITH THE 2015 IBC.
3. PROVIDE BLOCKING TO SUPPORT ALL LOADS FROM CEILING AND FLOOR.
4. PROVIDE ALL WORK TO BE IN ACCORDANCE WITH THE 2015 IBC.
5. PROVIDE ALL WORK TO BE IN ACCORDANCE WITH THE 2015 IBC.

KEY NOTES

- P2 SECTIONAL OVERHEAD GARAGE DOOR - REFER TO SPECIFICATIONS.
- P3 CAST IN PLACE CONCRETE STEPS.
- P4 INTERIOR FINISHES - REFER TO SCHEDULE.
- P5 INTERIOR ALUMINUM CASING AT ELEVATOR LOBBY - 1 1/2" RATED ASSEMBLY.
- P6 INTERIOR ALUMINUM CASING AT ELEVATOR LOBBY - 1 1/2" RATED ASSEMBLY.
- P7 INTERIOR ALUMINUM CASING AT ELEVATOR LOBBY - 1 1/2" RATED ASSEMBLY.
- P8 INTERIOR ALUMINUM CASING AT ELEVATOR LOBBY - 1 1/2" RATED ASSEMBLY.
- P9 INTERIOR ALUMINUM CASING AT ELEVATOR LOBBY - 1 1/2" RATED ASSEMBLY.
- P10 INTERIOR ALUMINUM CASING AT ELEVATOR LOBBY - 1 1/2" RATED ASSEMBLY.
- P11 INTERIOR ALUMINUM CASING AT ELEVATOR LOBBY - 1 1/2" RATED ASSEMBLY.
- P12 INTERIOR ALUMINUM CASING AT ELEVATOR LOBBY - 1 1/2" RATED ASSEMBLY.
- P13 INTERIOR ALUMINUM CASING AT ELEVATOR LOBBY - 1 1/2" RATED ASSEMBLY.
- P14 INTERIOR ALUMINUM CASING AT ELEVATOR LOBBY - 1 1/2" RATED ASSEMBLY.
- P15 INTERIOR ALUMINUM CASING AT ELEVATOR LOBBY - 1 1/2" RATED ASSEMBLY.
- P16 INTERIOR ALUMINUM CASING AT ELEVATOR LOBBY - 1 1/2" RATED ASSEMBLY.
- P17 INTERIOR ALUMINUM CASING AT ELEVATOR LOBBY - 1 1/2" RATED ASSEMBLY.
- P18 INTERIOR ALUMINUM CASING AT ELEVATOR LOBBY - 1 1/2" RATED ASSEMBLY.
- P19 INTERIOR ALUMINUM CASING AT ELEVATOR LOBBY - 1 1/2" RATED ASSEMBLY.
- P20 INTERIOR ALUMINUM CASING AT ELEVATOR LOBBY - 1 1/2" RATED ASSEMBLY.
- P21 INTERIOR ALUMINUM CASING AT ELEVATOR LOBBY - 1 1/2" RATED ASSEMBLY.
- P22 INTERIOR ALUMINUM CASING AT ELEVATOR LOBBY - 1 1/2" RATED ASSEMBLY.
- P23 INTERIOR ALUMINUM CASING AT ELEVATOR LOBBY - 1 1/2" RATED ASSEMBLY.
- P24 INTERIOR ALUMINUM CASING AT ELEVATOR LOBBY - 1 1/2" RATED ASSEMBLY.
- P25 INTERIOR ALUMINUM CASING AT ELEVATOR LOBBY - 1 1/2" RATED ASSEMBLY.
- P26 INTERIOR ALUMINUM CASING AT ELEVATOR LOBBY - 1 1/2" RATED ASSEMBLY.
- P27 INTERIOR ALUMINUM CASING AT ELEVATOR LOBBY - 1 1/2" RATED ASSEMBLY.
- P28 INTERIOR ALUMINUM CASING AT ELEVATOR LOBBY - 1 1/2" RATED ASSEMBLY.
- P29 INTERIOR ALUMINUM CASING AT ELEVATOR LOBBY - 1 1/2" RATED ASSEMBLY.
- P30 INTERIOR ALUMINUM CASING AT ELEVATOR LOBBY - 1 1/2" RATED ASSEMBLY.
- P31 INTERIOR ALUMINUM CASING AT ELEVATOR LOBBY - 1 1/2" RATED ASSEMBLY.
- P32 INTERIOR ALUMINUM CASING AT ELEVATOR LOBBY - 1 1/2" RATED ASSEMBLY.
- P33 INTERIOR ALUMINUM CASING AT ELEVATOR LOBBY - 1 1/2" RATED ASSEMBLY.
- P34 INTERIOR ALUMINUM CASING AT ELEVATOR LOBBY - 1 1/2" RATED ASSEMBLY.
- P35 INTERIOR ALUMINUM CASING AT ELEVATOR LOBBY - 1 1/2" RATED ASSEMBLY.
- P36 INTERIOR ALUMINUM CASING AT ELEVATOR LOBBY - 1 1/2" RATED ASSEMBLY.
- P37 INTERIOR ALUMINUM CASING AT ELEVATOR LOBBY - 1 1/2" RATED ASSEMBLY.
- P38 INTERIOR ALUMINUM CASING AT ELEVATOR LOBBY - 1 1/2" RATED ASSEMBLY.
- P39 INTERIOR ALUMINUM CASING AT ELEVATOR LOBBY - 1 1/2" RATED ASSEMBLY.
- P40 INTERIOR ALUMINUM CASING AT ELEVATOR LOBBY - 1 1/2" RATED ASSEMBLY.
- P41 INTERIOR ALUMINUM CASING AT ELEVATOR LOBBY - 1 1/2" RATED ASSEMBLY.
- P42 INTERIOR ALUMINUM CASING AT ELEVATOR LOBBY - 1 1/2" RATED ASSEMBLY.
- P43 INTERIOR ALUMINUM CASING AT ELEVATOR LOBBY - 1 1/2" RATED ASSEMBLY.
- P44 INTERIOR ALUMINUM CASING AT ELEVATOR LOBBY - 1 1/2" RATED ASSEMBLY.
- P45 INTERIOR ALUMINUM CASING AT ELEVATOR LOBBY - 1 1/2" RATED ASSEMBLY.
- P46 INTERIOR ALUMINUM CASING AT ELEVATOR LOBBY - 1 1/2" RATED ASSEMBLY.
- P47 INTERIOR ALUMINUM CASING AT ELEVATOR LOBBY - 1 1/2" RATED ASSEMBLY.
- P48 INTERIOR ALUMINUM CASING AT ELEVATOR LOBBY - 1 1/2" RATED ASSEMBLY.
- P49 INTERIOR ALUMINUM CASING AT ELEVATOR LOBBY - 1 1/2" RATED ASSEMBLY.
- P50 INTERIOR ALUMINUM CASING AT ELEVATOR LOBBY - 1 1/2" RATED ASSEMBLY.



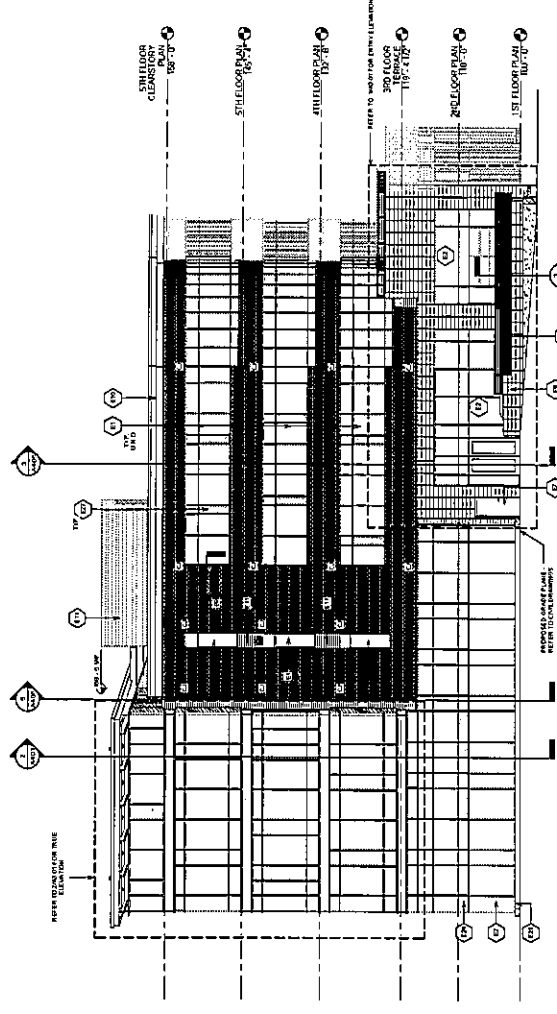
Location of Existing Monument Sign

GENERAL NOTES

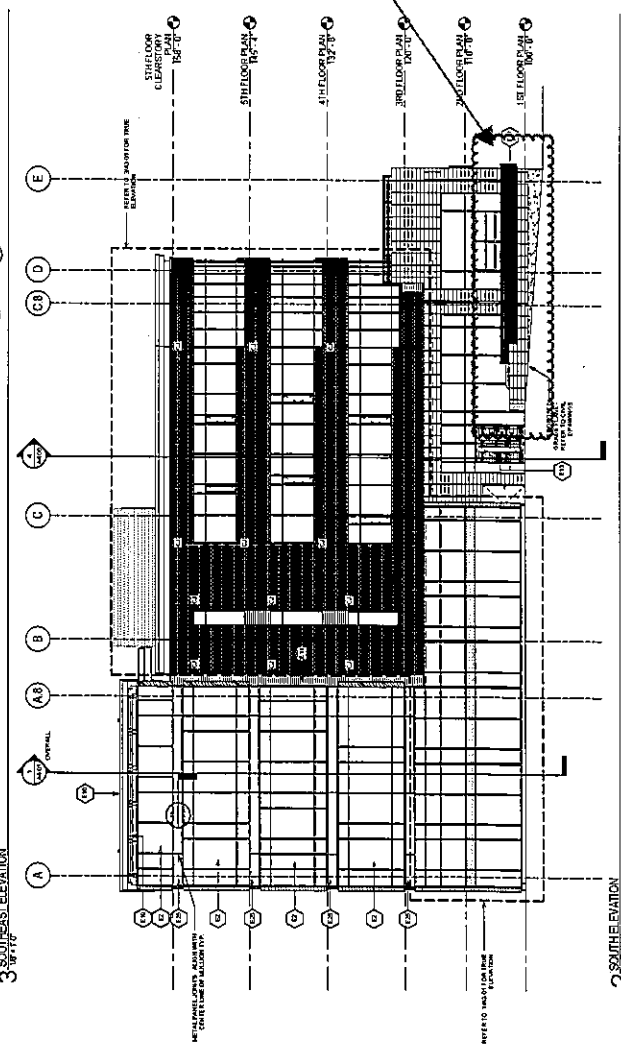
1. VERIFY THE TYPE, SIZE AND LOCATION OF ALL EXISTING CONDITIONS.
2. REFER TO ALL RELEVANT SPECIFICATIONS AND SCHEDULES.
3. PROVIDE LOCATIONS TO MATCH ALL EXISTING PANELS, SPANNERS, ETC.

KEY NOTES

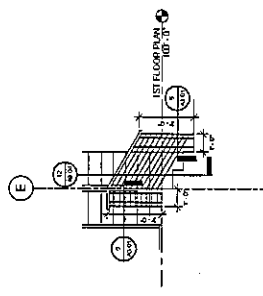
- E1 ALUMINUM STOREFRONT SYSTEM
- E2 ALUMINUM CURTAIN WALL SYSTEM
- E3 ALUMINUM WINDOW FRAME DOOR - REFER TO DETAILS & SPECIFICATIONS
- E4 EXTERIOR METAL DOOR
- E5 BRUSHED CONCRETE MASSWALL WITH CLADDING
- E6 BRICK MASSWALL UNIT CLADDING - REFER TO SPECIFICATIONS AND DETAILS
- E7 CONCRETE FASTENER METAL PANEL WALL SYSTEM - REFER TO SECTIONS AND DETAILS
- E8 HORIZONTAL WOOD BATTEN GREEN WITH EXPOSED STEEL SUPPORT SYSTEM
- E9 EXPOSED CAST IN PLACE CONCRETE CURB - RUBBED FINISH
- E10 FORMED BRASS METAL COVER - REFER TO DETAILS
- E11 OPERABLE WINDOW
- E12 1/2" X 1/2" METAL BRASS STOCK RAILING WITH WOOD CAP - REFER TO DETAILS
- E13 3" HIGH STEEL BRASS STOCK RAILING WITH WOOD CAP - REFER TO DETAILS
- E14 3" HIGH STEEL BRASS STOCK RAILING WITH WOOD CAP - PAINT STEEL WITH HIGH PERFORMANCE PAINT
- E15 3" HIGH STEEL BRASS STOCK RAILING WITH WOOD CAP - PAINT STEEL WITH HIGH PERFORMANCE PAINT
- E16 3" HIGH STEEL BRASS STOCK RAILING WITH WOOD CAP - PAINT STEEL WITH HIGH PERFORMANCE PAINT
- E17 3" HIGH STEEL BRASS STOCK RAILING WITH WOOD CAP - PAINT STEEL WITH HIGH PERFORMANCE PAINT
- E18 3" HIGH STEEL BRASS STOCK RAILING WITH WOOD CAP - PAINT STEEL WITH HIGH PERFORMANCE PAINT
- E19 3" HIGH STEEL BRASS STOCK RAILING WITH WOOD CAP - PAINT STEEL WITH HIGH PERFORMANCE PAINT
- E20 3" HIGH STEEL BRASS STOCK RAILING WITH WOOD CAP - PAINT STEEL WITH HIGH PERFORMANCE PAINT
- E21 3" HIGH STEEL BRASS STOCK RAILING WITH WOOD CAP - PAINT STEEL WITH HIGH PERFORMANCE PAINT
- E22 3" HIGH STEEL BRASS STOCK RAILING WITH WOOD CAP - PAINT STEEL WITH HIGH PERFORMANCE PAINT



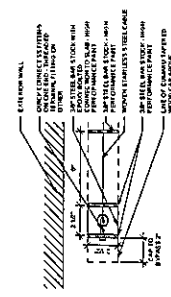
3 SOUTH EAST ELEVATION



2 SOUTH WEST ELEVATION

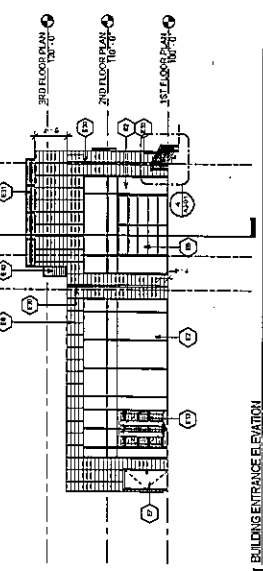


4 ENLARGED EXTERIOR BRASS STOCK RAILING ELEVATION



5 BRASS STOCK RAILING WITH COMBIBU WOOD CAP ELEVATION

Location of Existing Monument Sign



1 BUILDING ENTRANCE ELEVATION



