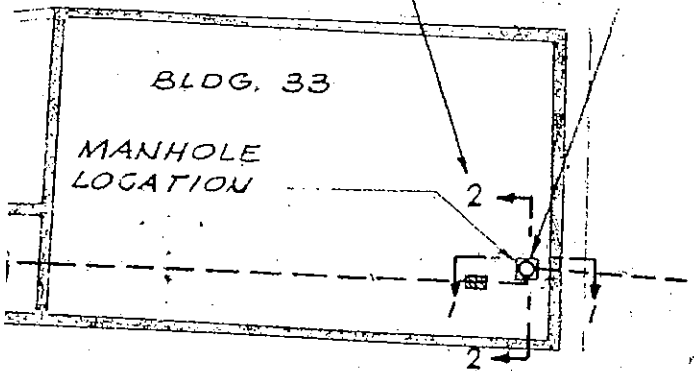
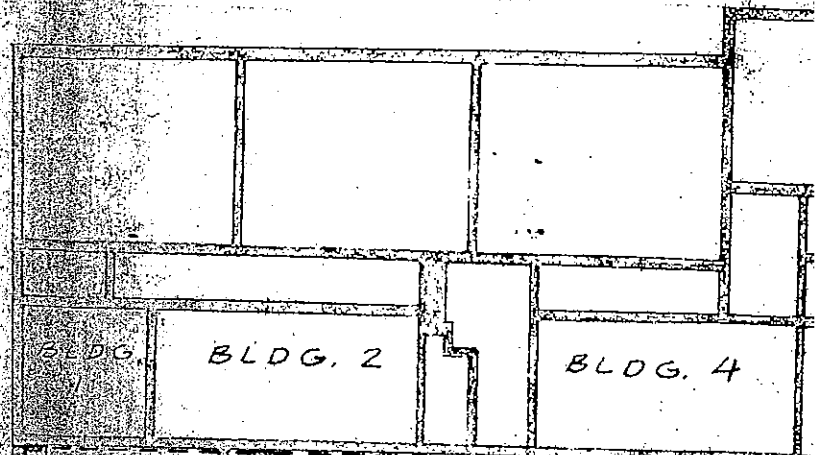


SEE SHEET E 99.8-415D
FOR ADDITIONAL TRENCH
AND MANHOLE DETAILS

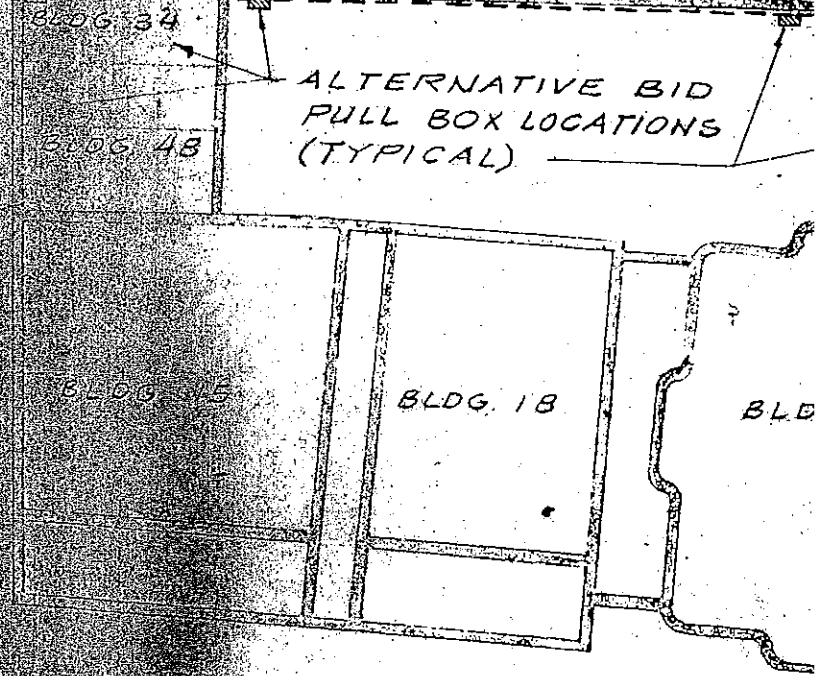
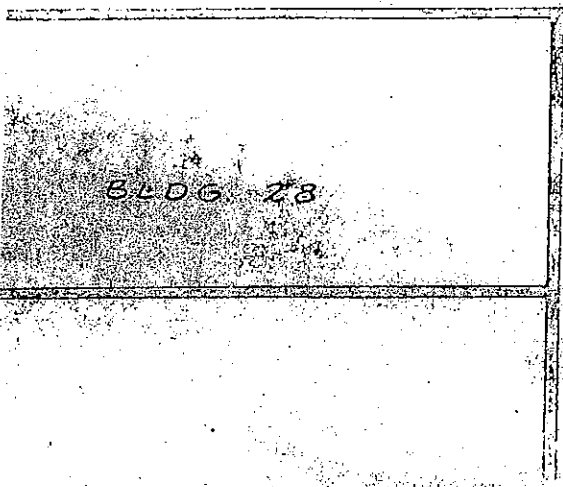
SEE SECTIONS
SHT. E 99.8-413-D



EXACT ROUTE OF FEEDER
TO BE DETERMINED ON SITE



ALTERNATIVE BID
PULL BOX LOCATIONS
(TYPICAL)



STATE STREET

41st STREET



PLOT PLAN

SP 861

AIR SPACE EASEMENT EXHIBIT FOR TRUSS SYSTEM SUPPORTING STEAM LINES

SITUATED IN NORTH 41ST STREET, IN THE CITY OF MILWAUKEE, MILWAUKEE COUNTY, WISCONSIN.

AN AIR SPACE EASEMENT ACROSS NORTH 41ST STREET, BEING A PART OF THE SOUTHWEST 1/4 OF THE NORTHWEST 1/4 OF SECTION 25, TOWN 12 NORTH, RANGE 21 EAST, IN THE CITY OF MILWAUKEE, MILWAUKEE COUNTY, WISCONSIN, BOUNDED AND DESCRIBED AS FOLLOWS:
COMMENCING AT THE INTERSECTION OF THE PRESENT EAST LINE OF NORTH 41ST STREET AND THE EASTERLY RIGHT OF WAY LINE OF NORTH 41ST STREET 109.85 FEET TO THE POINT OF BEGINNING (GROUND ELEVATION OF 33.6 FEET, BOTTOM OF AIR SPACE ELEVATION OF 71.7 FEET, TOP OF AIR SPACE ELEVATION 78.2 FEET) OF LANDS TO BE DESCRIBED; THENCE CONTINUING SOUTH 01°14'33" EAST ALONG SAID EASTERLY LINE 6.60 FEET TO A POINT (GROUND ELEVATION OF 33.6 FEET, BOTTOM OF AIR SPACE ELEVATION OF 71.7 FEET, TOP OF AIR SPACE ELEVATION 78.2 FEET); THENCE SOUTH 89°22'07" WEST 60.00 FEET TO A POINT ON THE WESTERLY LINE OF NORTH 41ST STREET (GROUND ELEVATION OF 33.8 FEET, BOTTOM OF AIR SPACE ELEVATION OF 71.3 FEET, TOP OF AIR SPACE ELEVATION 77.8 FEET); THENCE NORTH 01°14'33" WEST ALONG SAID WESTERLY LINE 6.60 FEET TO A POINT (GROUND ELEVATION OF 33.8 FEET, BOTTOM OF AIR SPACE ELEVATION OF 71.3 FEET, TOP OF AIR SPACE ELEVATION 77.8 FEET); THENCE NORTH 89°22'07" EAST 60.00 FEET TO THE POINT OF BEGINNING.

CONTAINING 396 SQ.FT. (0.0081 ACRES), SAID AIR SPACE EASEMENT CONTAINING 2,574 CUBIC FEET MORE OR LESS.

MARCH 21, 2008 DAHLMAN CONSTRUCTION COMPANY SURVEY NO. 164-062-AJM

NOTE:
ELEVATIONS ARE BASED ON THE CITY OF MILWAUKEE DATUM

WEST STATE STREET

66' PUBLIC R.O.W.

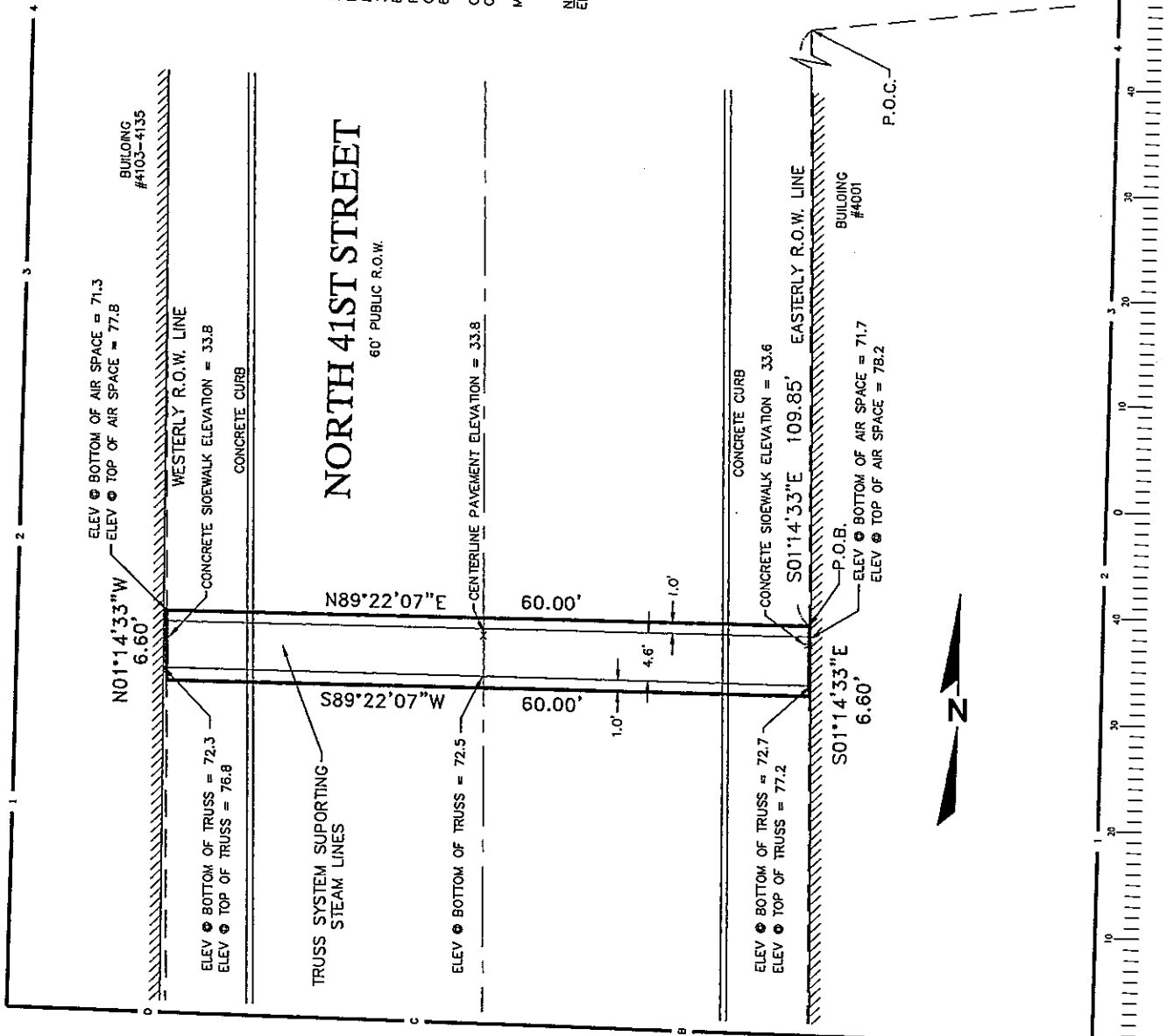
R.A. Smith National

Beyond Surveying
and Engineering

18745 W. Bluemound Road, Brookfield WI 53005
262-794-1000 Fax: 262-797-7373
www.ra-smithnational.com

S.S. 644625/STP
EX101B10.DWG/ASK101B10

SHEET 1 OF 1



58 1242