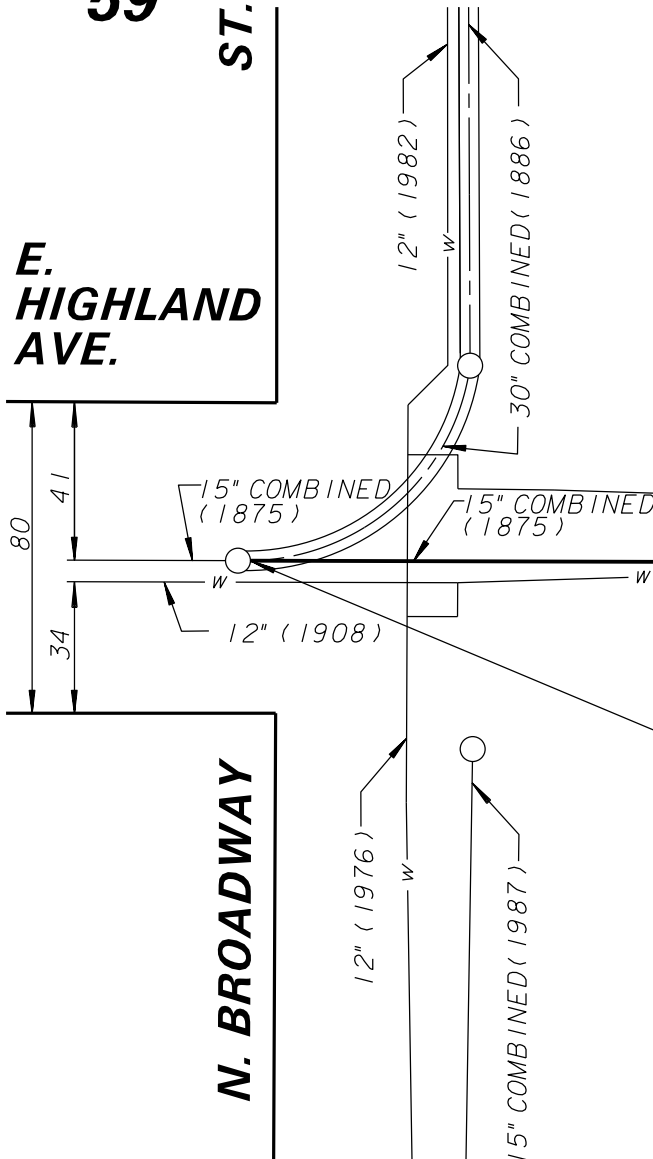


PLAT OF MILWAUKEE

59

ST.

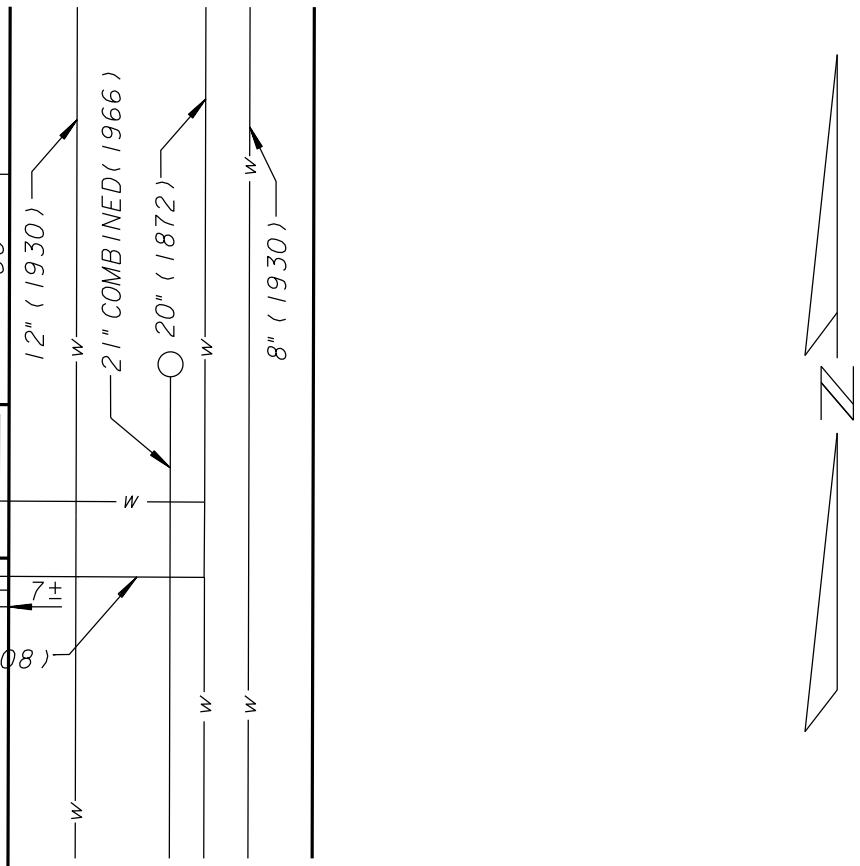
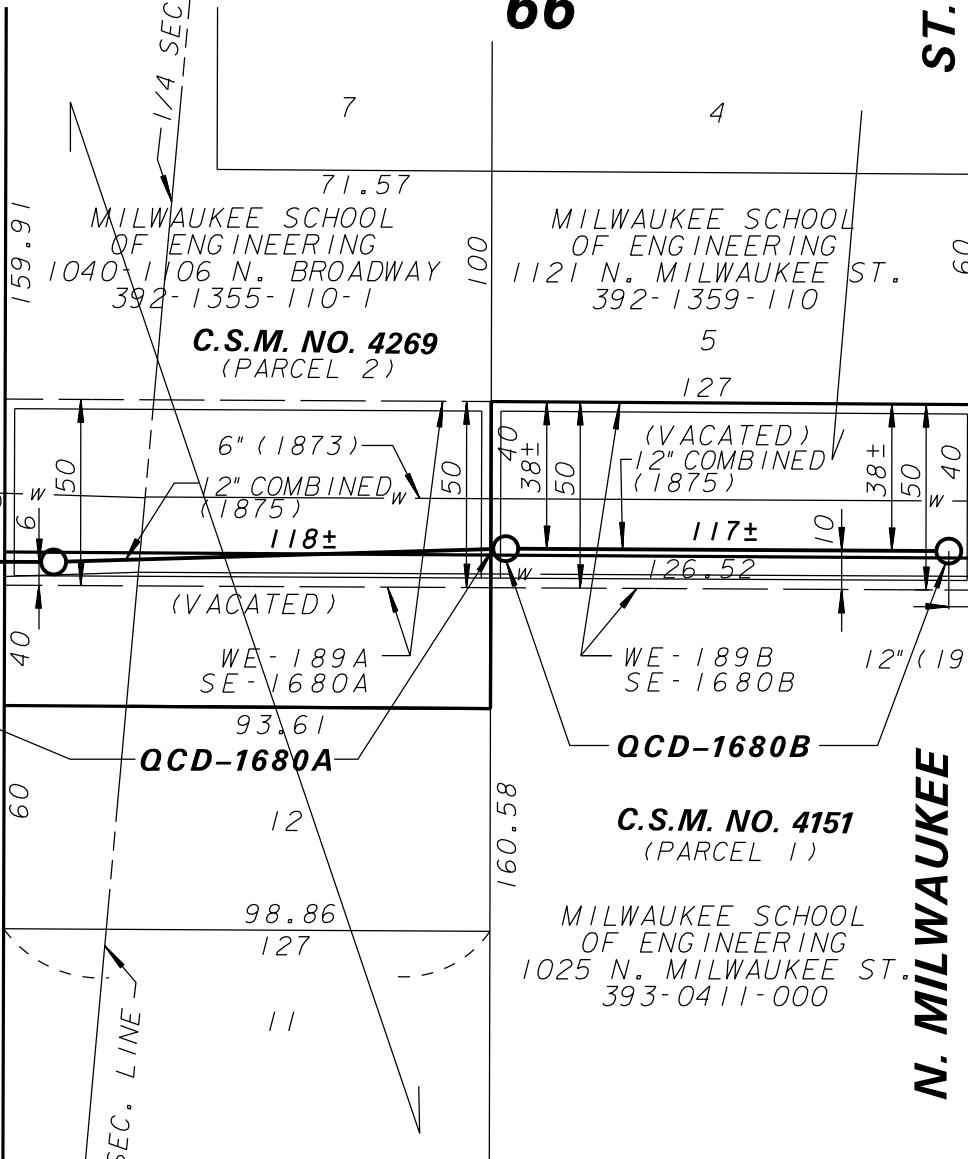
E. HIGHLAND AVE.



PLAT OF THE N.W.1/4 OF N.W.1/4 OF SEC. 28

66

ST.



60

PLAT OF MILWAUKEE

N. BROADWAY

65

PLAT OF THE N.W.1/4 OF N.W.1/4 OF SEC. 28

N. MILWAUKEE

ENVIRONMENTAL ENGINEERING SECTION
 INFRASTRUCTURE SERVICES DIVISION
 DEPARTMENT OF PUBLIC WORKS
 MILWAUKEE, WISCONSIN

AREA IN
PLAN OF SEWER EASEMENT
N.W.1/4 SEC.28, T.7 N., R.22 E. &
N.E.1/4 SEC.29, T.7 N., R.22 E.

E. HIGHLAND AVE. (VACATED)
FROM N. BROADWAY STREET TO N. MILWAUKEE STREET

SCALE 1"= 50'	ATLAS PAGE NO. 392, 393	EASE. NO. QCD 1680A
DRAWN BY R.FLINK	CH'KD. BY S.BEKELE	QCD 1680B
APPROVED	DATE 5/29/2018	
APPROVED	FILE NO. 198-7-85	