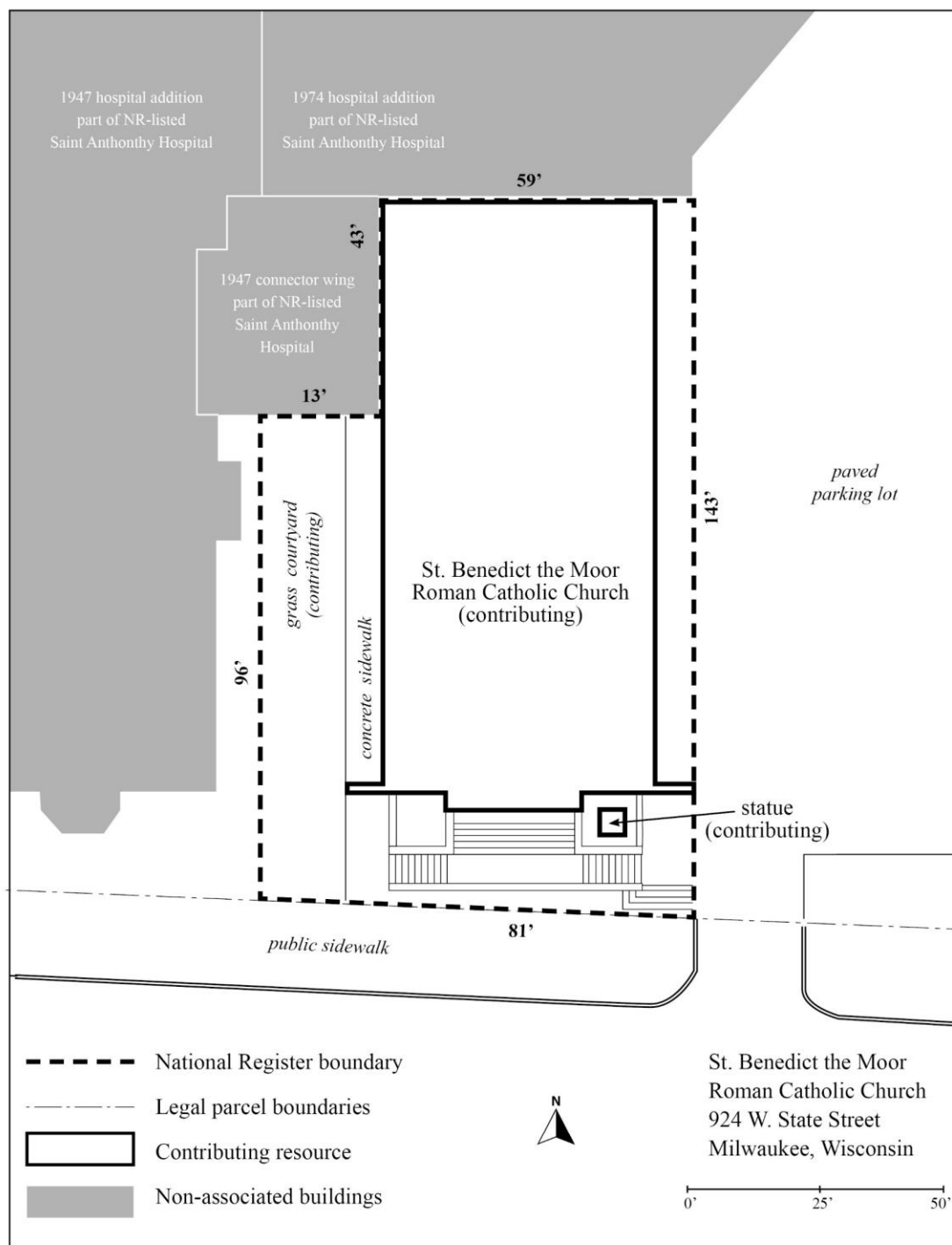




St. Benedict the Moor Roman Catholic Church

924 W. State Street

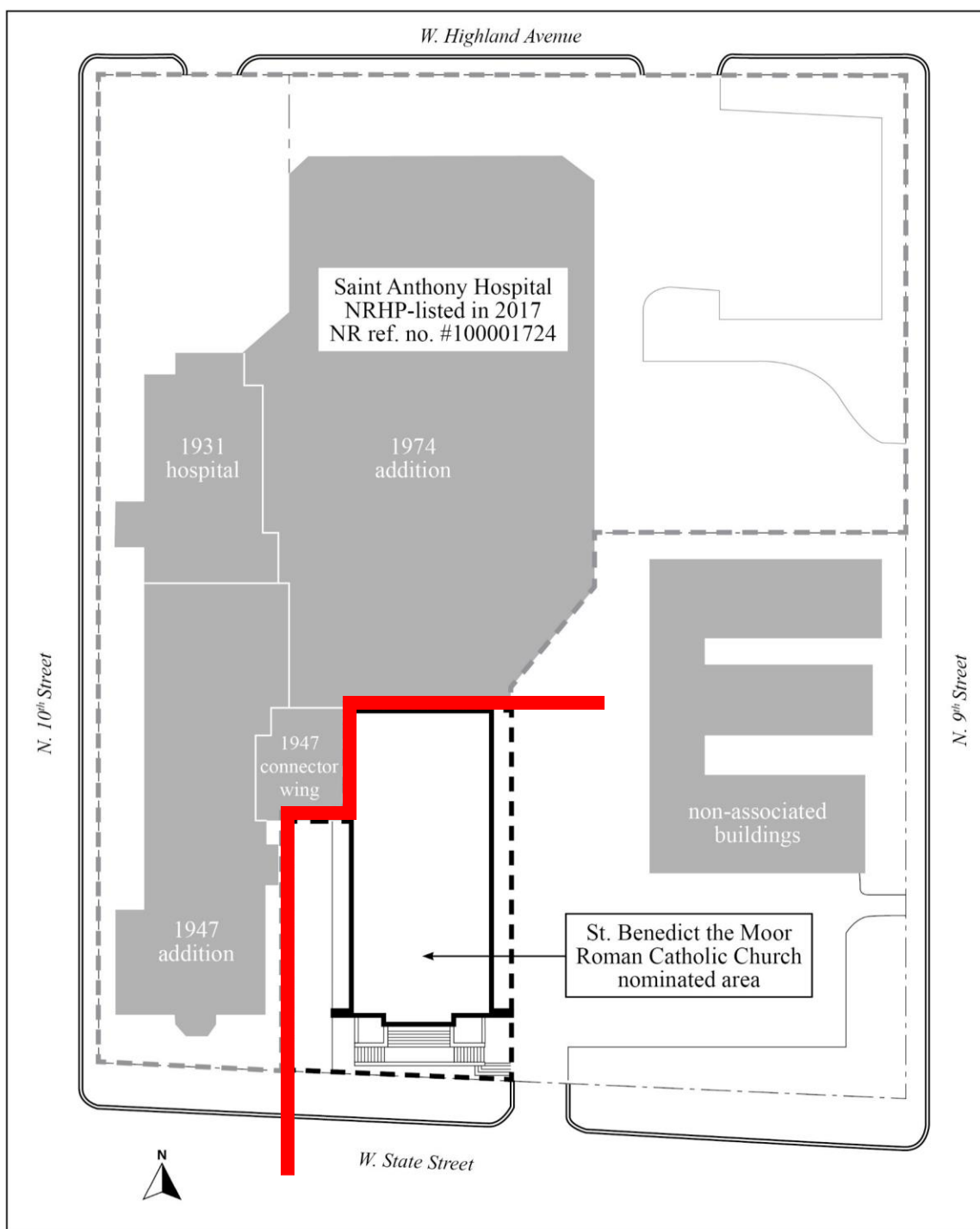


St. Benedict the Moor Roman Catholic Church

Built 1924

Criterion A: 1924-1970
Black Ethnic Heritage
Social History

Three contributing resources:
Church
Courtyard
Statue



St. Anthony Hospital

NR Listed in 2017

Physically attached to St.
Benedict the Moor Church



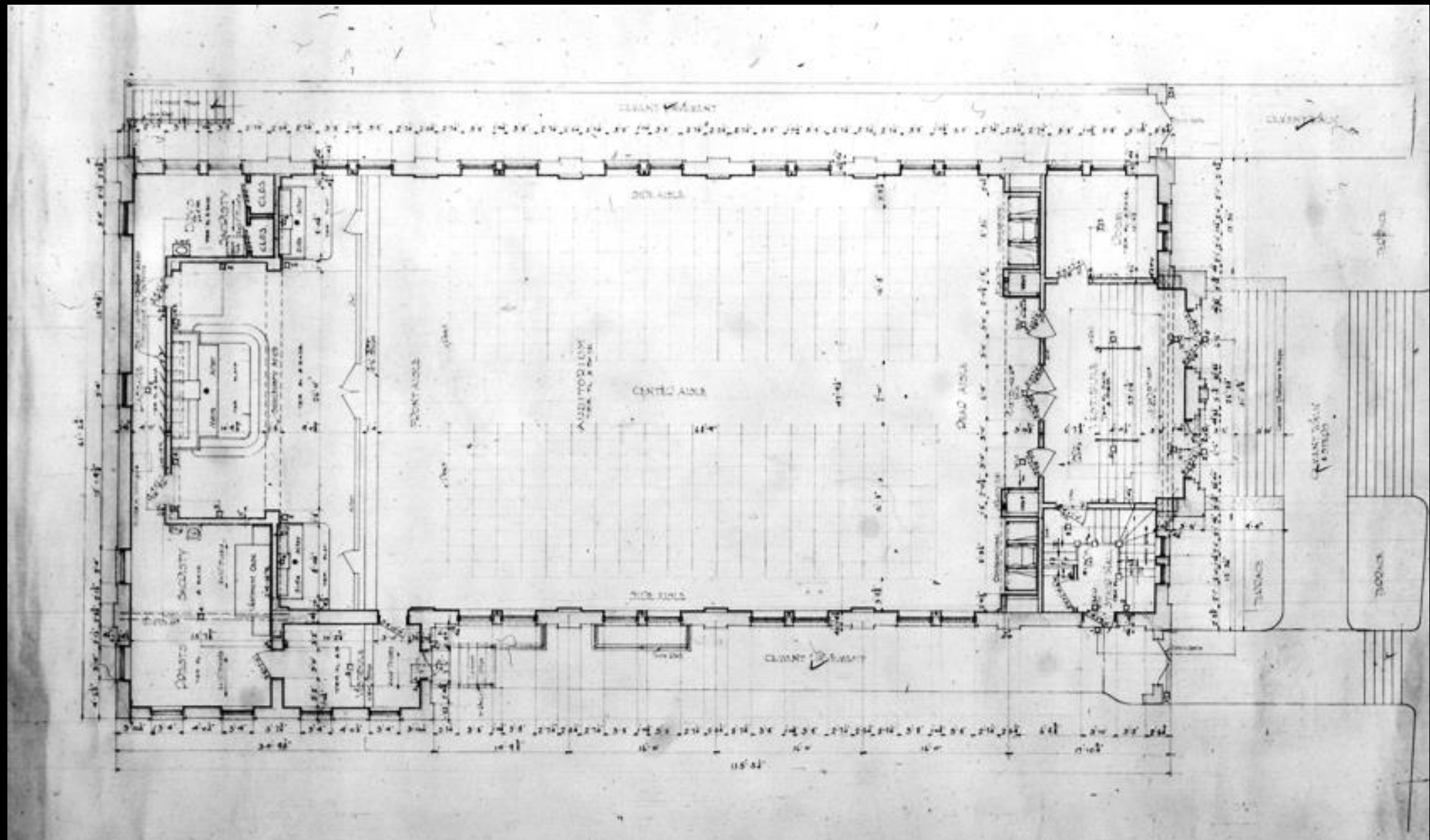
South (primary) elevation



South and east elevations



East elevation



Plan of church



Interior appearance, undated photo (pre-1960s)



Entry vestibule



Interior, looking north to altar



Interior, looking south to vestibule and organ loft



Lower level parish hall



South elevation, St. Benedict the Moor statue



Altarpiece

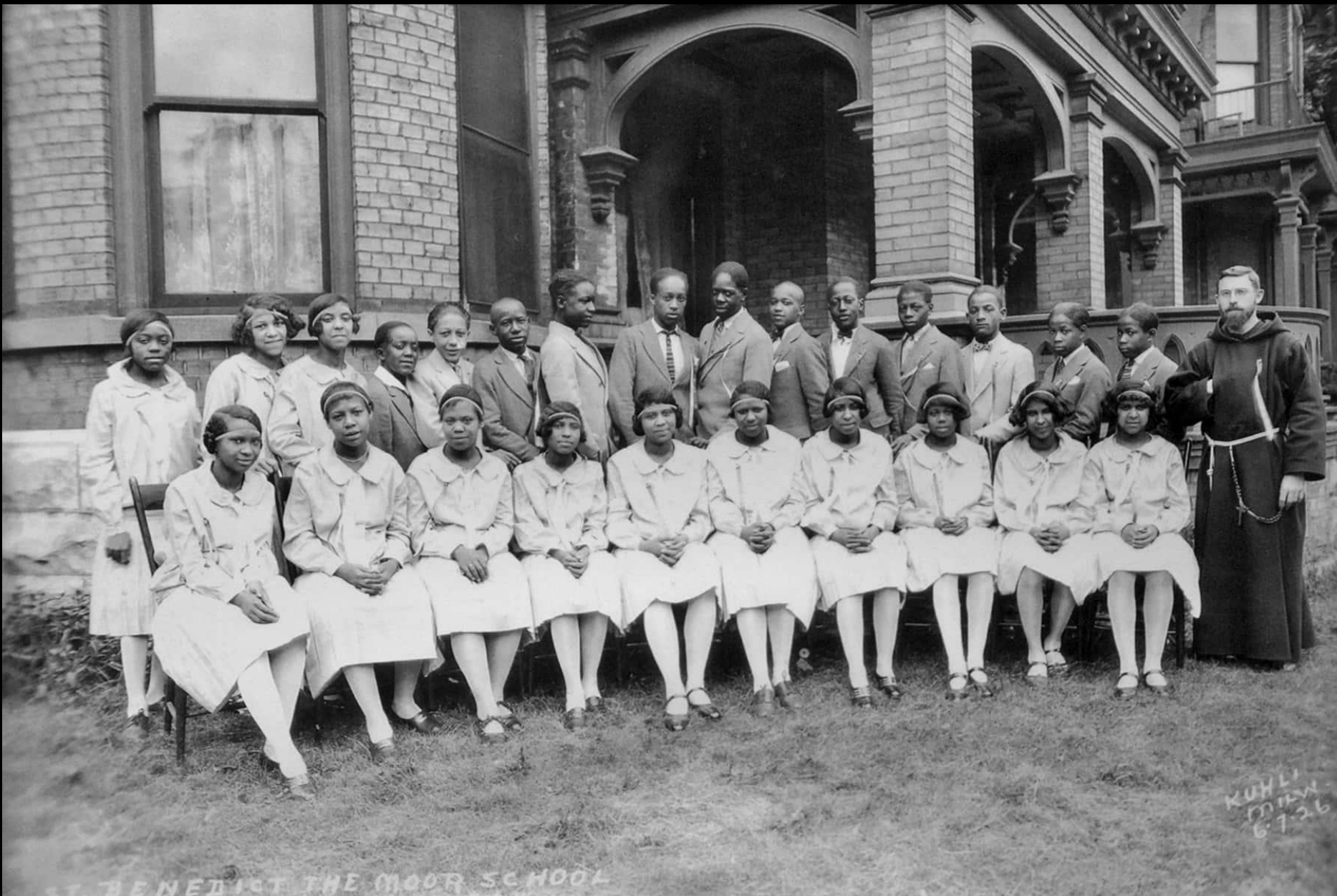


St. Benedict the Moor

NRHP *Criterion A:*
Black Ethnic Heritage & Social History

- Social Service Programs
- Education
- Medical Care

(Left) 1908 photo of first location on N. 4th St.



St. Benedict the Moor School, 1926



ST. BENEDICT THE MOOR INSTITUTE

MILWAUKEE, WISCONSIN

ST. ANTHONY HOSPITAL

St. Benedict the Moor School (demolished 1960s)

St. Anthony Hospital



(Former) St. Anthony Hospital

Listed in NRHP in 2017



St. Benedict the Moor Roman Catholic Church

924 W. State Street