



LIVING WITH HISTORY

# Certificate of Appropriateness

Milwaukee Historic Preservation Commission/200 E. Wells Street/Milwaukee, WI 53202/phone 414-286-5712/fax 414-286-3004

<b>Property</b>	1016 -1028 E. BRADY	Brady Street HD
<b>Description of work</b>	Erect signage per attached drawings. Sizes may be reduced to meet zoning requirements.	
<b>Date issued</b>	6/19/2018	PTS ID 114559 COA: signage

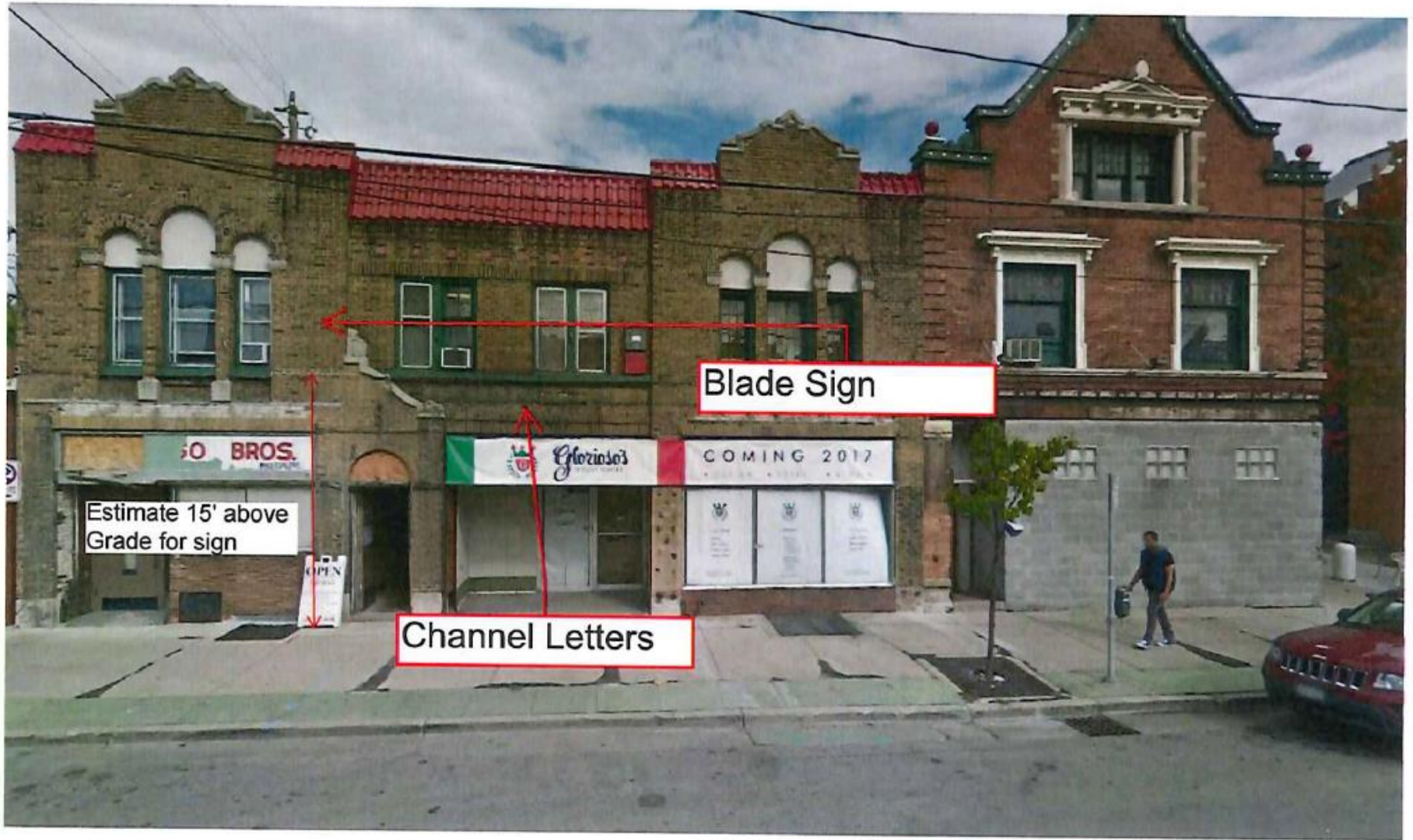
In accordance with the provisions of Section 320-21 (11) and (12) of the Milwaukee Code of Ordinances, the Milwaukee Historic Preservation Commission has issued a certificate of appropriateness for the work listed above. The work was found to be consistent with preservation guidelines. The following conditions apply to this certificate of appropriateness:

All work must be done in a craftsman-like manner, and must be completed within one year of the date this certificate was issued. Staff must approve any changes or additions to this certificate before work begins. Work that is not completed in accordance with this certificate may be subject to correction orders or citations. If you require technical assistance, please contact Historic Preservation staff as follows: Phone: (414) 286-5712 E-mail: hpc@milwaukee.gov.

If permits are required, you are responsible for obtaining them from the Milwaukee Development Center. If you have questions about permit requirements, please consult the Development Center's web site, [www.milwaukee.gov/build](http://www.milwaukee.gov/build), or call (414) 286-8210.

City of Milwaukee Historic Preservation Staff

Copies to: Development Center, Ald. Nik Kovac, Contractor

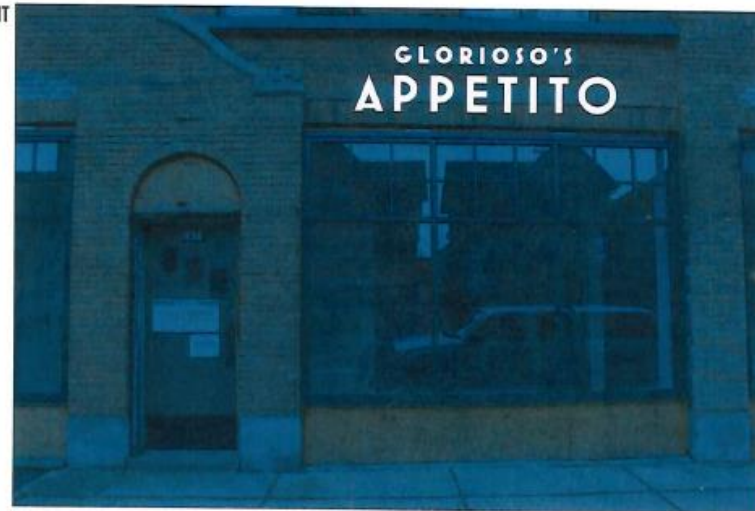


Overview with pre-construction conditions

Day



NIGHT



Letter Height: 6.6"



www.Innovative-Signs.com

**Client**

Mehmert Store Services

**EST/INV #**

EST - 516

**Size**

See Above

**Quantity**

1 2 3 4 5 88

**Materials & Specs**

**Channel Letters LED Lit**

Front Lit Channel Letters  
Perforated Vinyl Faces  
Raceway Mounted(5.0")  
- Painted to Match Building

**Colors**

- Perforated Vinyl (White at Night)
- Match Raceway to Building Color

**Revisions**

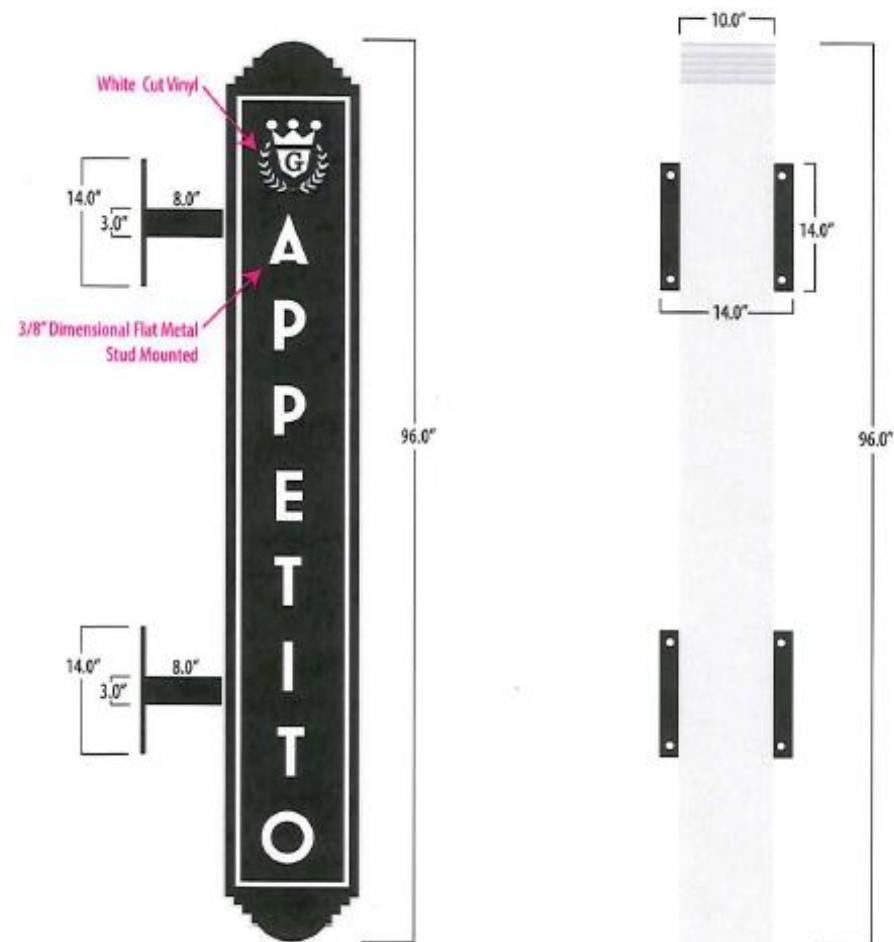
- REVISION
- REVISION
- REVISION
- REVISION

**Representative**

Kathryn K.

**Designer**

Brian Harrigan  
Date: 05/21/2018



www.Innovative-Signs.com

**Client**

Mehmert Store Services

**EST/INV #**

EST - 516

**Size**

See Above

**Quantity**

1  2  3  4  5  88

**Materials & Specs**

**Non Illuminated Blade**

96" x 10.0" Cabinet  
 3/8" Dimensional Copy  
 - Pin Mounted 1/2" off of Face  
 Black Vinyl over Face  
 Retainer & Return Painted  
 MP 33172 Silver Surfer

**Colors**

- Black
- MP 33172 Silver Surfer
- White