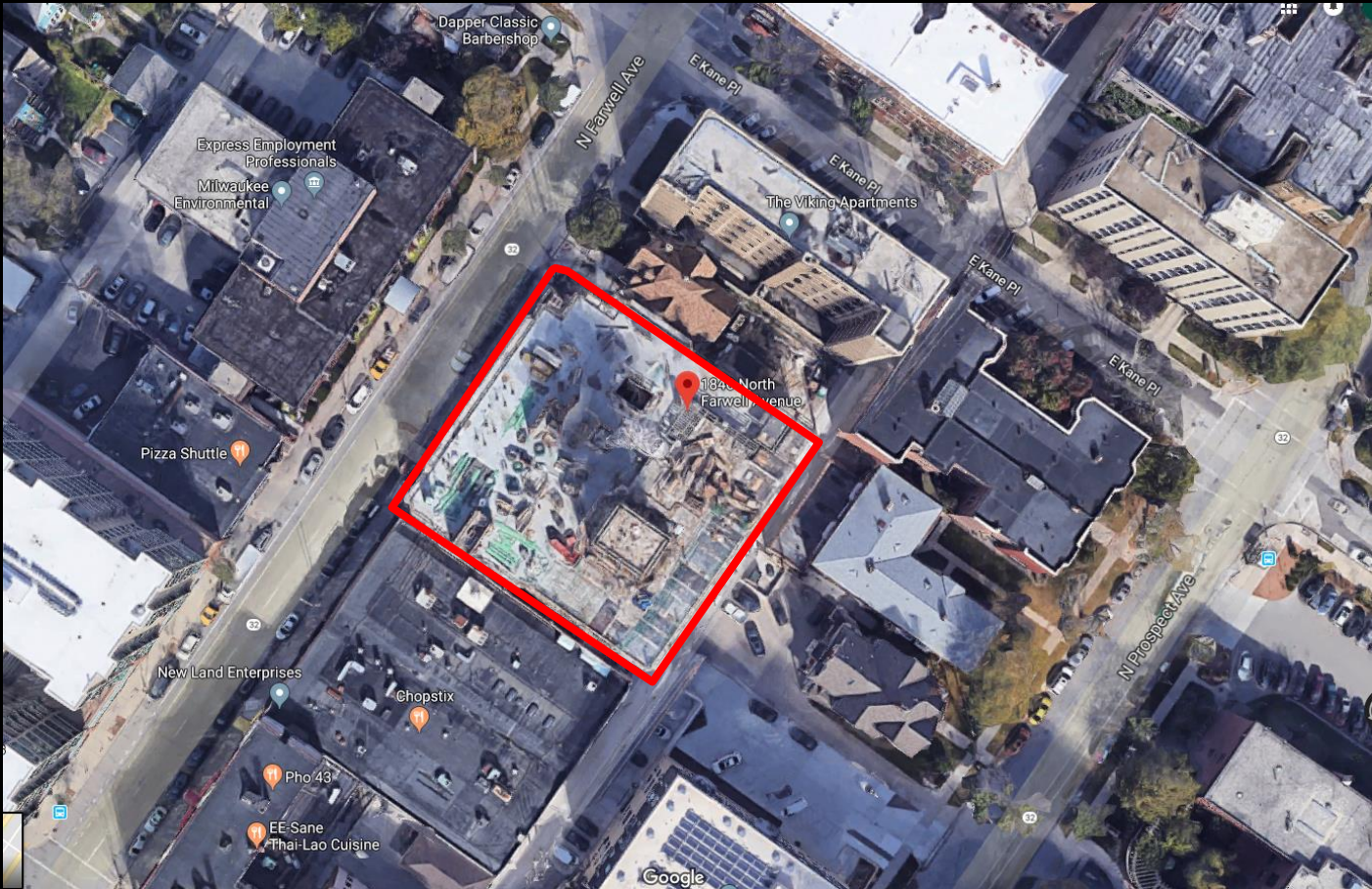


File No. 171723. Substitute resolution relating to a Minor Modification to the Detailed Planned Development known as 1840 North Farwell Avenue to allow the addition of a patio on the northwest side of the building and changes to door locations along Farwell Avenue to accommodate a restaurant use for the building currently under construction at 1840 North Farwell Avenue, on the east side of North Farwell Avenue, south of East Kane Place, in the 3rd Aldermanic District.



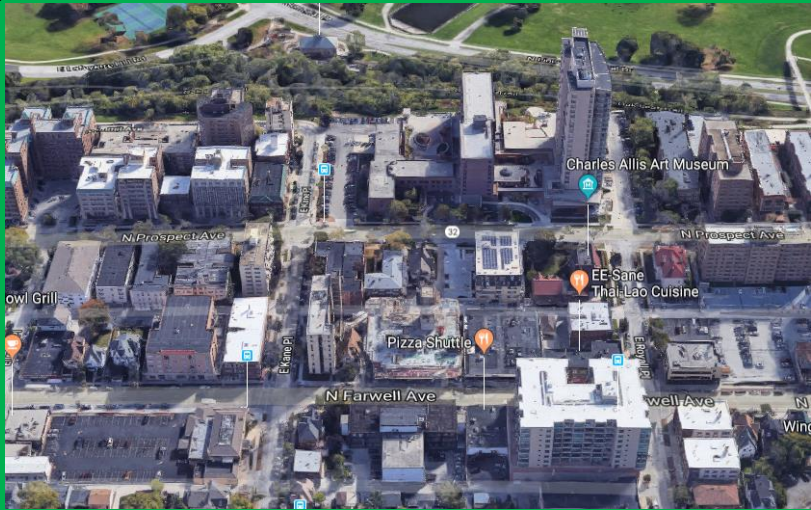
File No. 171723. Site Context Photos.



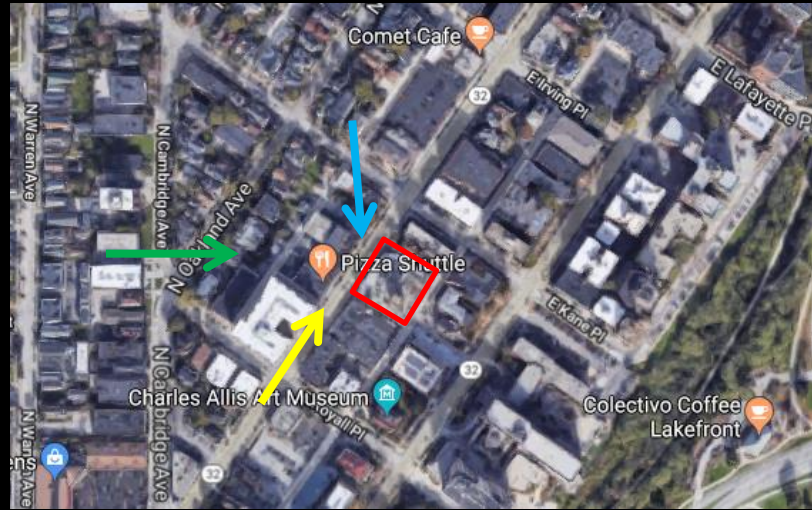
View southwest from N. Farwell Ave. and E. Kane Place



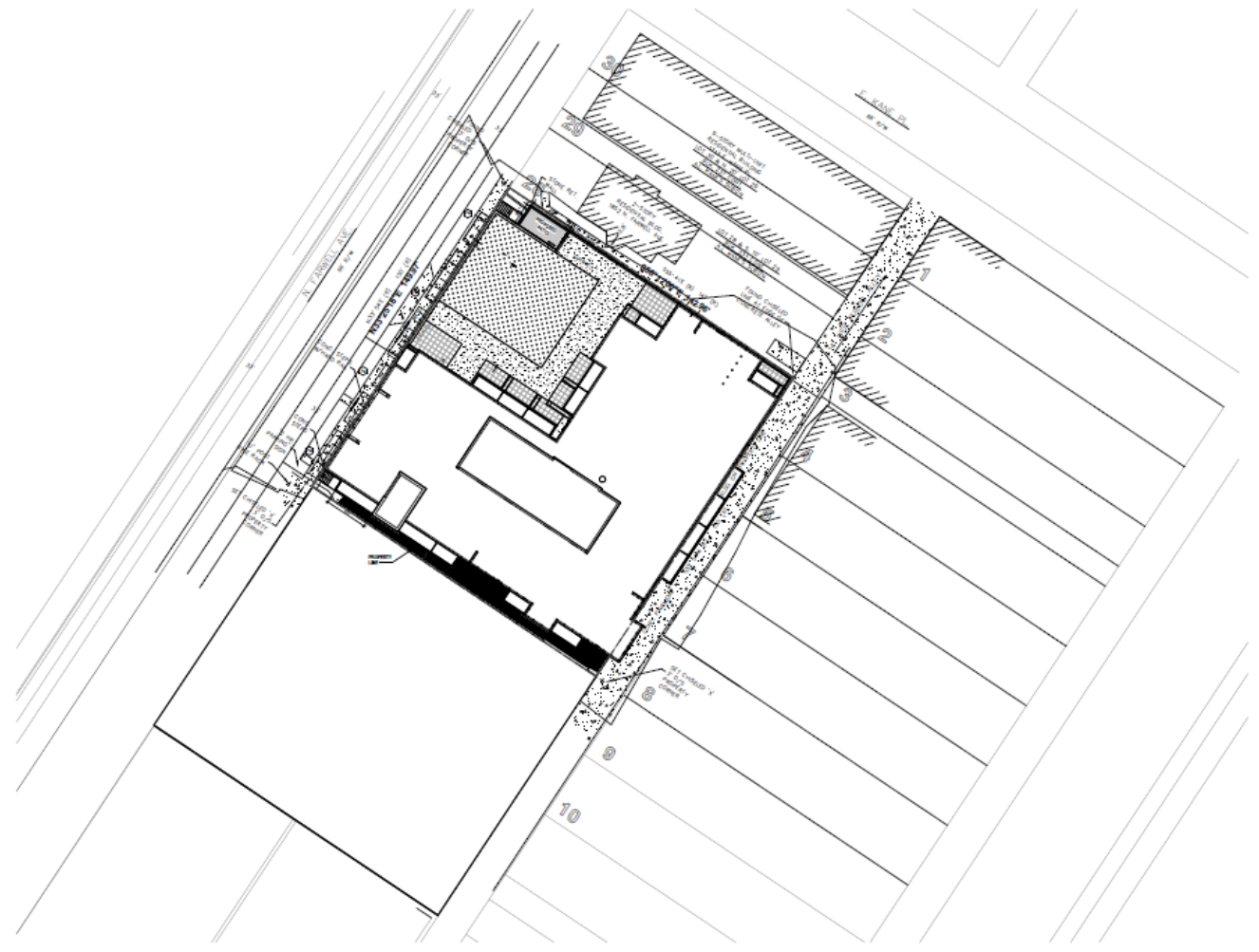
View northeast on N. Farwell Avenue





Aerial view east from N. Oakland Avenue

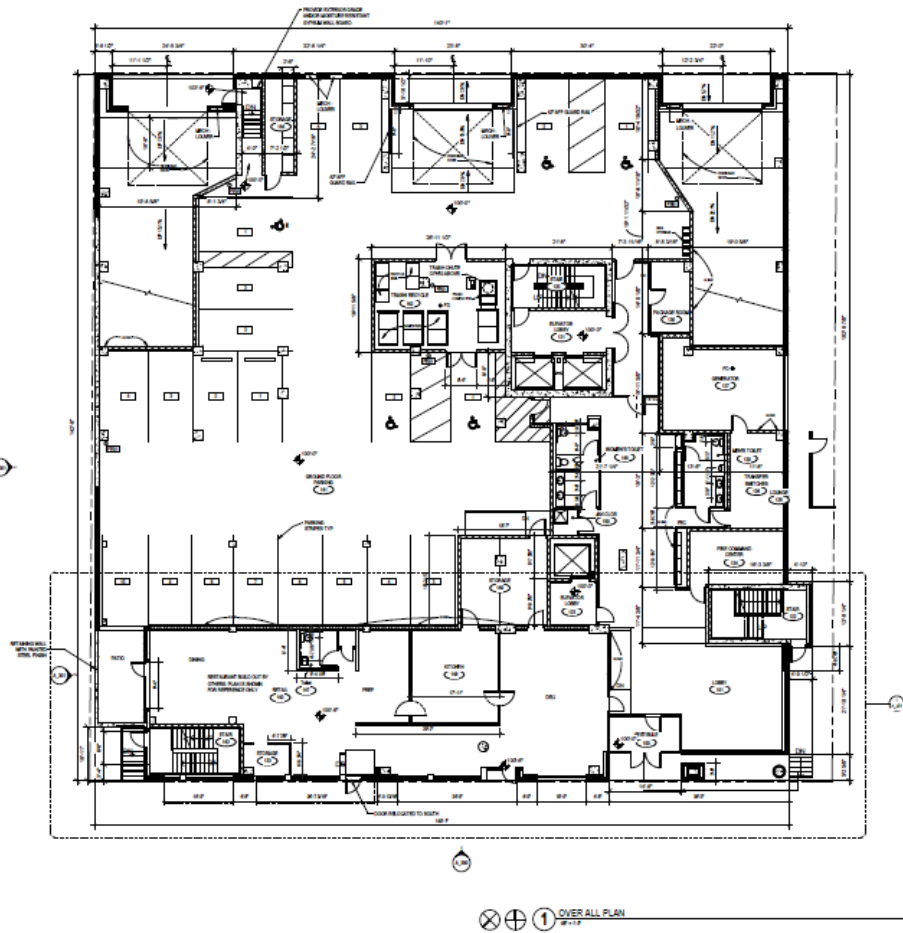


File No. 171723.

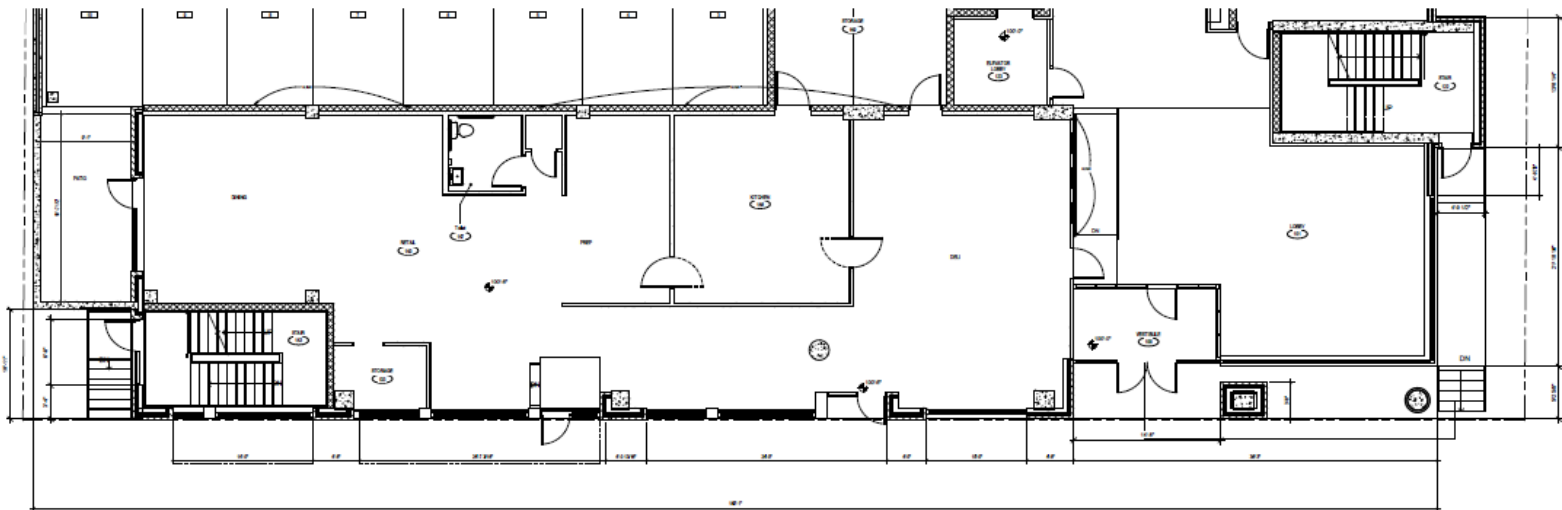




 1 ARCHITECTURAL SITE PLAN
2017

A100 - ARCHITECTURAL SITE PLAN



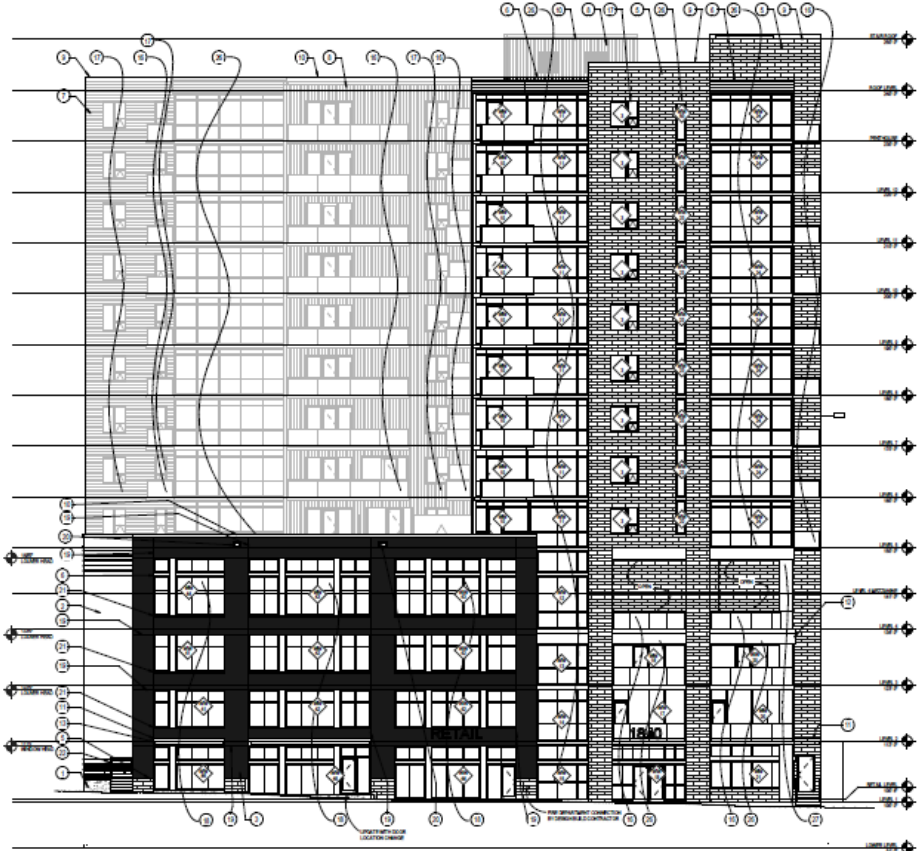
A200 - OVERALL PLAN



⊕ 1 ENLARGED PLAN
1/4" = 1'-0"

A201 - ENLARGED PLAN

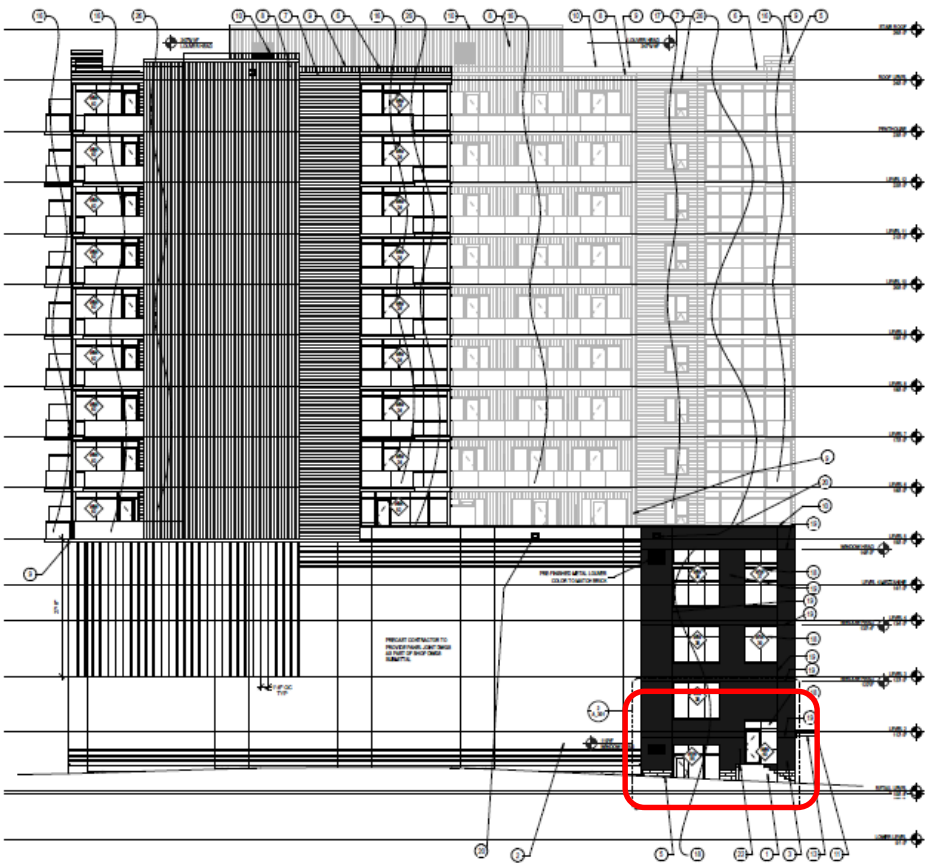
MATERIAL LIST			
CODE	MATERIAL	DESCRIPTION	BASED ON DESIGN MANUFACTURER
1	CONCRETE - CAST IN PLACE		
2	PRECAST PANEL	CONCRETE	SEE ELEVATIONS DETAILS FOR SPECIAL FINISHES
3	MASONRY - BRICK	MODULAR BRICK	GREY/WHITTE
4	METAL PANEL	WOODS	WATCH WINDOW WALL SYSTEM
5	MASONRY - CAST STONE	12" X 8"	SMOOTH COLOR BUFF
6	METAL PANEL	24" ALUMINUM	VERTICAL CAST STONE
7	METAL PANEL - HORIZONTAL	24" GA SPAN LINE	MORNING GLASS
8	METAL PANEL - VERTICAL	24" GA SPAN LINE	MORNING GLASS
9	PREFINISH METAL COPING	24" GA GALVANIZED 2 PLY	EXTERIOR FINISH - COLOR 1
10	PREFINISH METAL COPING	24" GA GALVANIZED 2 PLY	EXTERIOR FINISH - COLOR 2
11	METAL PANEL - CANOPY	ALUMINUM	
12	METAL PANEL WOOD	SOFTWOOD GRN	MINIMUM 1/2" V GROOVE
13	NOT USED		
14	NOT USED		
15	PAVING/BALCONY GLASS	GLASS PANELING	24" X 24" TOP RAIL UP
16	WINDOW	ALUM PANCH	24" X 24" TO 24" X 24"
17	WINDOW GLAZING SYSTEM	GLASS & ALUM/FRAMING	TEMPERED GLASS W/ WIRE
18	CONCRETE JOINT		VERGALACT 454517
19	CLIPPERS	PREFINISHED METAL	
20	NOT USED		
21	PAVING - ORNAMENTAL PAVING	STEEL	SEE CIVIL DRAWINGS
22	NOT USED		
23	METAL JOISTS		
24	OVERHEAD DOOR		
25	WINDOW WALL	ALUMINUM/ALUM VIEW	24" X 24" TO 24" X 24"
26	PREFINISHED COLUMN COVER	ALUMINUM	24" X 24" TO 24" X 24"



1 WEST ELEVATION

A300 - WEST ELEVATION

MATERIAL LIST			
CODE	MATERIAL	DESCRIPTION	BASED ON DESIGN MANUFACTURER
1	CONCRETE CAST IN PLACE	CONCRETE	SEE ELEVATION DETAILS FOR REVEAL PATTERNS
2	CONCRETE CAST IN PLACE	CONCRETE	SEE ELEVATION DETAILS FOR REVEAL PATTERNS
3	MASONRY BRICK	MEDIA BRICK	DIAGONAL WHITE INTERSTATE
4	METAL PANEL	1000G	MATCH WINDOW WALL SYSTEM
5	MASONRY CAST STONE	2" X 8"	SMOOTH COLOR BUFF
6	METAL PANEL	20 GA ALUMINUM	ME 20
7	METAL PANEL - HORIZONTAL	20 GA GALVALUME	ME 10 LIGHT WHITE
8	METAL PANEL - VERTICAL	20 GA GALVALUME	ME 10 MEDIUM GRAY
9	PROTECH METAL CEILING	24 GA GALVANIZED 2 PEECE	STAIN PAINT - COLOR 1
10	PROTECH METAL CEILING	24 GA GALVANIZED 2 PEECE	COUNTERFLASHING & 22 GA CONTINUOUS GLAZING
11	METAL PANEL - CANOPY	24 GA GALVANIZED 2 PEECE	COUNTERFLASHING & 22 GA CONTINUOUS GLAZING
12	METAL - ALUMINUM	ALUMINUM	FINISH - COLOR 2
13	METAL PANEL - INSIDE	ALUMINUM	FINISH - COLOR 2
14	METAL PANEL - INSIDE	ALUMINUM	FINISH - COLOR 2
15	METAL PANEL - INSIDE	ALUMINUM	FINISH - COLOR 2
16	METAL PANEL - INSIDE	ALUMINUM	FINISH - COLOR 2
17	METAL PANEL - INSIDE	ALUMINUM	FINISH - COLOR 2
18	METAL PANEL - INSIDE	ALUMINUM	FINISH - COLOR 2
19	METAL PANEL - INSIDE	ALUMINUM	FINISH - COLOR 2
20	METAL PANEL - INSIDE	ALUMINUM	FINISH - COLOR 2
21	METAL PANEL - INSIDE	ALUMINUM	FINISH - COLOR 2
22	METAL PANEL - INSIDE	ALUMINUM	FINISH - COLOR 2
23	METAL PANEL - INSIDE	ALUMINUM	FINISH - COLOR 2
24	METAL PANEL - INSIDE	ALUMINUM	FINISH - COLOR 2
25	METAL PANEL - INSIDE	ALUMINUM	FINISH - COLOR 2
26	METAL PANEL - INSIDE	ALUMINUM	FINISH - COLOR 2
27	METAL PANEL - INSIDE	ALUMINUM	FINISH - COLOR 2
28	METAL PANEL - INSIDE	ALUMINUM	FINISH - COLOR 2
29	METAL PANEL - INSIDE	ALUMINUM	FINISH - COLOR 2
30	METAL PANEL - INSIDE	ALUMINUM	FINISH - COLOR 2
31	METAL PANEL - INSIDE	ALUMINUM	FINISH - COLOR 2
32	METAL PANEL - INSIDE	ALUMINUM	FINISH - COLOR 2
33	METAL PANEL - INSIDE	ALUMINUM	FINISH - COLOR 2
34	METAL PANEL - INSIDE	ALUMINUM	FINISH - COLOR 2
35	METAL PANEL - INSIDE	ALUMINUM	FINISH - COLOR 2
36	METAL PANEL - INSIDE	ALUMINUM	FINISH - COLOR 2
37	METAL PANEL - INSIDE	ALUMINUM	FINISH - COLOR 2
38	METAL PANEL - INSIDE	ALUMINUM	FINISH - COLOR 2
39	METAL PANEL - INSIDE	ALUMINUM	FINISH - COLOR 2
40	METAL PANEL - INSIDE	ALUMINUM	FINISH - COLOR 2
41	METAL PANEL - INSIDE	ALUMINUM	FINISH - COLOR 2
42	METAL PANEL - INSIDE	ALUMINUM	FINISH - COLOR 2
43	METAL PANEL - INSIDE	ALUMINUM	FINISH - COLOR 2
44	METAL PANEL - INSIDE	ALUMINUM	FINISH - COLOR 2
45	METAL PANEL - INSIDE	ALUMINUM	FINISH - COLOR 2
46	METAL PANEL - INSIDE	ALUMINUM	FINISH - COLOR 2
47	METAL PANEL - INSIDE	ALUMINUM	FINISH - COLOR 2
48	METAL PANEL - INSIDE	ALUMINUM	FINISH - COLOR 2
49	METAL PANEL - INSIDE	ALUMINUM	FINISH - COLOR 2
50	METAL PANEL - INSIDE	ALUMINUM	FINISH - COLOR 2
51	METAL PANEL - INSIDE	ALUMINUM	FINISH - COLOR 2
52	METAL PANEL - INSIDE	ALUMINUM	FINISH - COLOR 2
53	METAL PANEL - INSIDE	ALUMINUM	FINISH - COLOR 2
54	METAL PANEL - INSIDE	ALUMINUM	FINISH - COLOR 2
55	METAL PANEL - INSIDE	ALUMINUM	FINISH - COLOR 2
56	METAL PANEL - INSIDE	ALUMINUM	FINISH - COLOR 2
57	METAL PANEL - INSIDE	ALUMINUM	FINISH - COLOR 2
58	METAL PANEL - INSIDE	ALUMINUM	FINISH - COLOR 2
59	METAL PANEL - INSIDE	ALUMINUM	FINISH - COLOR 2
60	METAL PANEL - INSIDE	ALUMINUM	FINISH - COLOR 2
61	METAL PANEL - INSIDE	ALUMINUM	FINISH - COLOR 2
62	METAL PANEL - INSIDE	ALUMINUM	FINISH - COLOR 2
63	METAL PANEL - INSIDE	ALUMINUM	FINISH - COLOR 2
64	METAL PANEL - INSIDE	ALUMINUM	FINISH - COLOR 2
65	METAL PANEL - INSIDE	ALUMINUM	FINISH - COLOR 2
66	METAL PANEL - INSIDE	ALUMINUM	FINISH - COLOR 2
67	METAL PANEL - INSIDE	ALUMINUM	FINISH - COLOR 2
68	METAL PANEL - INSIDE	ALUMINUM	FINISH - COLOR 2
69	METAL PANEL - INSIDE	ALUMINUM	FINISH - COLOR 2
70	METAL PANEL - INSIDE	ALUMINUM	FINISH - COLOR 2
71	METAL PANEL - INSIDE	ALUMINUM	FINISH - COLOR 2
72	METAL PANEL - INSIDE	ALUMINUM	FINISH - COLOR 2
73	METAL PANEL - INSIDE	ALUMINUM	FINISH - COLOR 2
74	METAL PANEL - INSIDE	ALUMINUM	FINISH - COLOR 2
75	METAL PANEL - INSIDE	ALUMINUM	FINISH - COLOR 2
76	METAL PANEL - INSIDE	ALUMINUM	FINISH - COLOR 2
77	METAL PANEL - INSIDE	ALUMINUM	FINISH - COLOR 2
78	METAL PANEL - INSIDE	ALUMINUM	FINISH - COLOR 2
79	METAL PANEL - INSIDE	ALUMINUM	FINISH - COLOR 2
80	METAL PANEL - INSIDE	ALUMINUM	FINISH - COLOR 2
81	METAL PANEL - INSIDE	ALUMINUM	FINISH - COLOR 2
82	METAL PANEL - INSIDE	ALUMINUM	FINISH - COLOR 2
83	METAL PANEL - INSIDE	ALUMINUM	FINISH - COLOR 2
84	METAL PANEL - INSIDE	ALUMINUM	FINISH - COLOR 2
85	METAL PANEL - INSIDE	ALUMINUM	FINISH - COLOR 2
86	METAL PANEL - INSIDE	ALUMINUM	FINISH - COLOR 2
87	METAL PANEL - INSIDE	ALUMINUM	FINISH - COLOR 2
88	METAL PANEL - INSIDE	ALUMINUM	FINISH - COLOR 2
89	METAL PANEL - INSIDE	ALUMINUM	FINISH - COLOR 2
90	METAL PANEL - INSIDE	ALUMINUM	FINISH - COLOR 2
91	METAL PANEL - INSIDE	ALUMINUM	FINISH - COLOR 2
92	METAL PANEL - INSIDE	ALUMINUM	FINISH - COLOR 2
93	METAL PANEL - INSIDE	ALUMINUM	FINISH - COLOR 2
94	METAL PANEL - INSIDE	ALUMINUM	FINISH - COLOR 2
95	METAL PANEL - INSIDE	ALUMINUM	FINISH - COLOR 2
96	METAL PANEL - INSIDE	ALUMINUM	FINISH - COLOR 2
97	METAL PANEL - INSIDE	ALUMINUM	FINISH - COLOR 2
98	METAL PANEL - INSIDE	ALUMINUM	FINISH - COLOR 2
99	METAL PANEL - INSIDE	ALUMINUM	FINISH - COLOR 2
100	METAL PANEL - INSIDE	ALUMINUM	FINISH - COLOR 2



2 PATIO NORTH ELEVATION

1 NORTH ELEVATION

A301 - NORTH ELEVATION



A400 - RENDERING