

NOTE: FACE LAYOUT SHOWN FOR GRAPHICAL REPRESENTATION ONLY. SEE ARTWORK FOR PRODUCTION.

ELECTRICAL	
LED'S	(114 TOTAL (57/SIDE)) BITRO PRIME24V REBEL BRIGHT WHITE 6500K (OTSR-X2-BW65)
P.S.	(1) 96W-24 (ASU2-100-24U)
AMPS	0.95A TOTAL
V.A.	120 VOLTS WATTS 114
CIRCUITS	1-20 AMP

MAX OF (136) LED MODULES PER 96W P.S.

NOTE: SIGN IS TO BE WIRED WITH 12 GAGE STRANDED 1,000 WIRE THHN PER DIAGRAM ON BALLAST. ELECTRICAL LEADS TO BE 12 GAGE SOLID 600 V WIRE THHN. SIGN MUST BE GROUNDED WITH 12 GAGE SOLID 600 V GREEN WIRE THHN.

THIS SIGN IS INTENDED TO BE INSTALLED IN ACCORDANCE WITH THE REQUIREMENTS OF ARTICLE 600 OF THE NATIONAL ELECTRICAL CODE AND/OR OTHER APPLICABLE LOCAL CODES. THIS INCLUDES PROPER GROUNDING AND BONDING OF SIGN.

NOTE: THE SIGN IS PROVIDED WITH EXTERNAL SWITCH MOUNTING PROVISION. THE LOCATION OF THE DISCONNECT SWITCH AFTER INSTALLATION SHALL COMPLY WITH ARTICLE 600.6(A) (1) OF THE NATIONAL ELECTRIC CODE



SIGN INTERIOR TO BE PAINTED FLAT WHITE FOR MAXIMUM REFLECTIVITY

USE WHITE SILICONE TO CONCEAL LIGHT LEAKS

TOLERANCE: ± 1/16" ON ALL DIMENSIONS

AREA/WEIGHT

SIGN SQUARE FOOTAGE: 36.5 sq. ft.
ESTIMATED SIGN WEIGHT: 375 Lb.

ALTERNATE SPREAD FOUNDATION: 3'-6" X 3'-6" X 3'-6" DEEP

REBAR: #6 BARS @12" O.C. BOTH WAYS TO FORM MATS, PLACE MATS TOP AND BOTTOM OF FOUNDATION. MIN 3" COVER

CONCRETE REQUIRED: 1.6 cu.yd.

DESIGN LOADS: 115 MPH WIND LOAD RISK CATEGORY II, EXPOSURE C. 2021 INTERNATIONAL BUILDING CODE, ASCE 7-16

FOUNDATION NOTE: 3000 PSI CONCRETE @ 28 DAYS 2000 PSF SOIL BEARING 150 PSF/FT SOIL LATERAL BEARING UNDISTURBED SOIL

PROTECT ANCHOR BOLTS, NUTS, AND WASHERS FROM CORROSION WITH BITUMINOUS COATING

AUGERED FOUNDATION: 2'-0"Ø X 4'-6" DEEP

TOTAL CONCRETE REQUIRED: 0.6 cu.yd.

BILL OF MATERIALS				
NO.	QTY.	DESCRIPTION	SPEC.	
1	AS REQ'D	2 1/2" X 2 1/2" X 3/16" ALUMINUM ANGLE, ANGLE FRAME	6061-T6	
2	AS REQ'D	2" X 1" X 1/8" ALUMINUM ANGLE, EXTERNAL ANGLES FOR FACE	6063-T52	
3	AS REQ'D	1 1/2" X 1 1/2" X 1/8" ALUMINUM ANGLE, CLADDING FRAME	6063-T52	
4	AS REQ'D	3" X 3" X 1/8" ALUMINUM ANGLE, FACE PERIMETER FRAME, NOTCH ALONG TOP EDGE ONLY AS SHOWN IN SECTION	6063-T52	
6	AS REQ'D	2" X 2" X 1/8" ALUMINUM CHANNEL, OR SIMILAR - 2" STANDOFF FOR ELECTRICAL DISCONNECT, WELDED TO FIXED BOTTOM CABINET FILLER	6063-T52	
10	2	.125" THICK ALUMINUM SHEET, ROUTED FACES	3003-H14	
12	AS REQ'D	.125" THICK ALUMINUM SHEET, CLADDING AND FILLER	3003-H14	
13	2	.050" THICK ALUMINUM SHEET, LED BAFFLE	3003-H14	
14	1	.090" THICK ALUMINUM SHEET, FORMED POWER SUPPLY MOUNTING HAT, OR SIMILAR ENCLOSURE FOR POWER SUPPLIES	3003-H14	
20	1	3" X 3" X 1/4" STEEL TUBE	A500 Gr.B	
21	1	2 1/2" X 2 1/2" X 1/4" STEEL TUBE	A500 Gr.B	
22	AS REQ'D	2" X 2" X 3/16" STEEL STRUCTURAL ANGLE	A36	
30	1	10" X 10" X 1" STEEL BASE PLATE	A36	
31	2	10" X 10" X 1" STEEL MATCH PLATE	A36	
32	4	2" X 2" X 3/16" STEEL GUSSET	A36	
40	AS REQ'D	1/2" THICK PLASKOLITE OPTIX FUSION BLUE, PUSH THRU COPY, REFER TO APPROVED ARTWORK FOR ALL SPECS	-	
41	AS REQ'D	1/2" THICK PLASKOLITE OPTIX FUSION RED, PUSH THRU COPY, REFER TO APPROVED ARTWORK FOR ALL SPECS	-	
60	-	LED MODULE (SEE ELECTRICAL CHART)	-	
61	-	POWER SUPPLY (SEE ELECTRICAL CHART)	-	
62	1	ELECTRICAL DISCONNECT SWITCH	-	
70	4	3/4"-10 STEEL STRAIGHT ANCHOR BOLTS AND WASHERS, 3'-0" LONG	ASTM F1554 GR55	
71	4	BOLT, HEX HEAD, Ø1/2"-13, w/ NUT & WASHERS	A325	
72	AS REQ'D	BOLT, FLAT HEAD, Ø3/8"-16, w/ NUT & WASHERS	-	
73	AS REQ'D	BOLT, CARRIAGE HEAD, Ø3/8"-16, w/ NUT & WASHERS	-	
74	AS REQ'D	BOLT, HEX HEAD, Ø1/4"-20, w/ NUT & WASHERS	-	
75	AS REQ'D	1/4"-20 ALUMINUM WELD STUDS	-	
76	AS REQ'D	SHEET METAL SCREW, FLAT HEAD, #10 X 3/4", PHILLIPS	-	
77	AS REQ'D	SELF DRILLING SCREW, #8 X 1/2" PAN HEAD, PHILLIPS	-	
78	AS REQ'D	SELF DRILLING SCREW, #10 X 3/4" PAN HEAD, PHILLIPS	-	
79	AS REQ'D	SELF DRILLING SCREW, #10 X 3/4" HEX HEAD, UNSLOTTED	-	
80	AS REQ'D	2" OPEN S.S. PIANO HINGE	-	
81	AS REQ'D	PROP RODS (1" X 1" X 1/8" ALUMINUM SQUARE TUBE) OR SIMILAR RUBBER GROMMET Ø1 1/4" HOLE DIAMETER (MCMASTER 9307K72 OR SIMILAR), FOR ELECTRICAL DISCONNECT SWITCH ACCESS ON BOTTOM UNION, STRATUS, U.L. AND ELECTRICAL DISCONNECT SWITCH INSIDE SIGN LABEL LOCATION	-	
82	1		-	
90	AS REQ'D		-	

ELEVATIONS

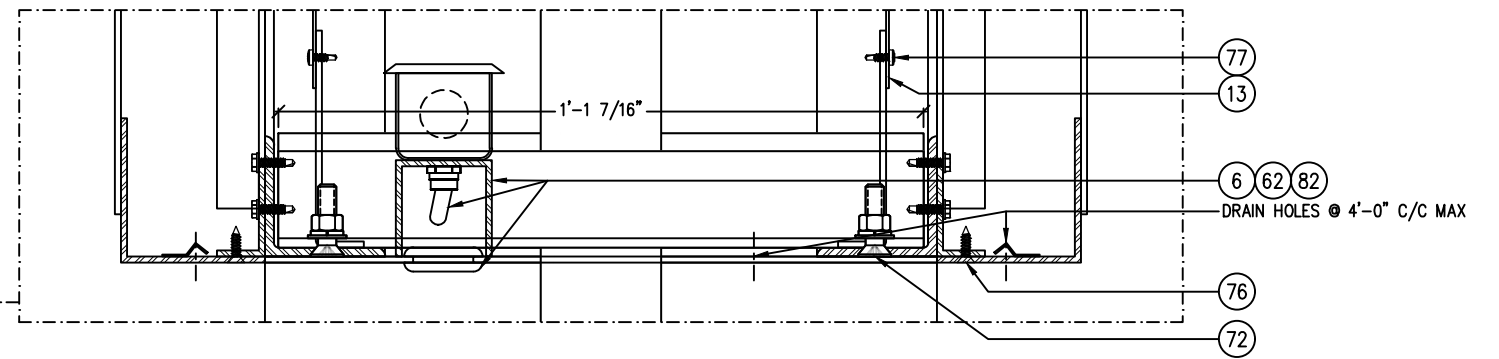
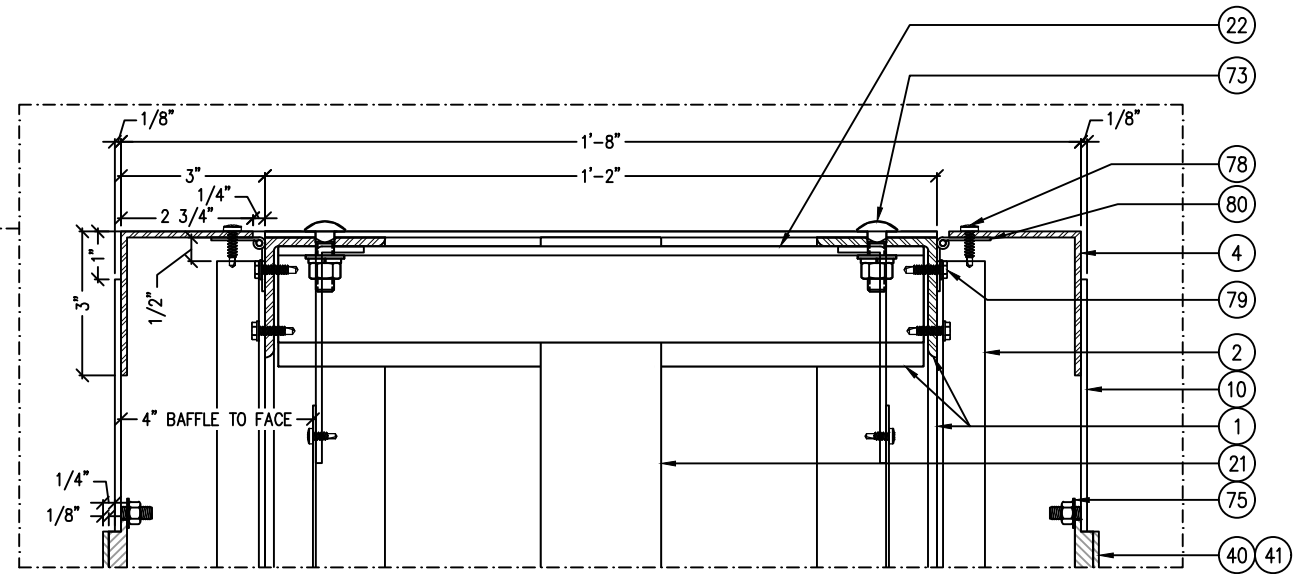
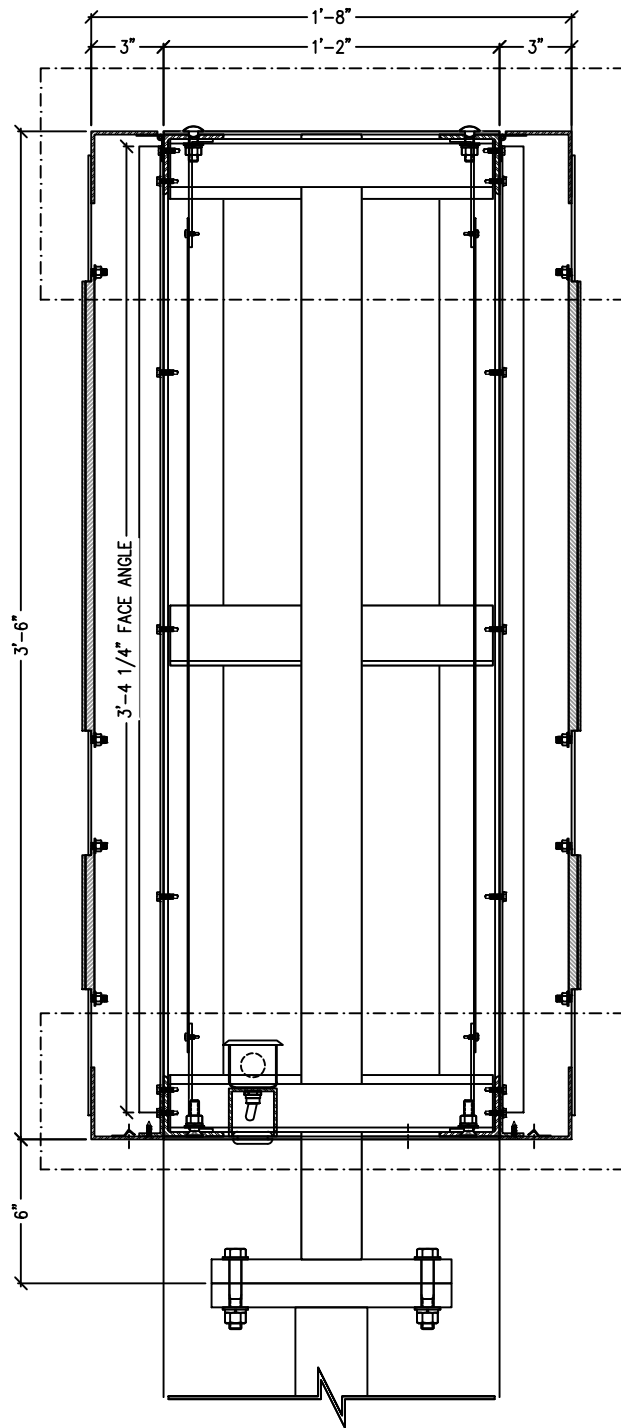
SCALE: 3/8"=1'-0"

REF. DWG.	
SIGN ID:	B2nx



TITLE	3'-6" X 8'-7 1/2" X 6'-0 1/8" OAH D/F ILL. MONUMENT
DRAWINGS ARE THE EXCLUSIVE PROPERTY OF STRATUS, ANY UNAUTHORIZED USE OR DUPLICATION IS NOT PERMITTED. THIS DESIGN IS INTENDED FOR USE BY STRATUS AND THEIR APPROVED VENDORS IN FABRICATION, ASSEMBLY AND INSTALLATION. STRATUS MAKES NO CLAIM TO ANY STRUCTURAL, ELECTRICAL, MECHANICAL OR FOUNDATION ENGINEERING IF THIS DESIGN IS USED OUTSIDE OF STRATUS AND THE APPROVED VENDORS.	

LOCATION:	VARIOUS	BANK OF AMERICA	
LOCATION No.:	-		
REQUEST No.:	31382	CHECKED BY:	-
DRAWN BY:	SAGAR PATEL	DATE CHECKED:	-
DATE DRAWN:	04/02/2025	FILE:	BOA2252C
DRAWING SCALE:	AS NOTED	SHEET:	1/7



SECTION - LED'S HIDDEN

SCALE: 1-1/2"=1'-0"

REF. DWG.	-
-	-
-	-
-	-
-	-



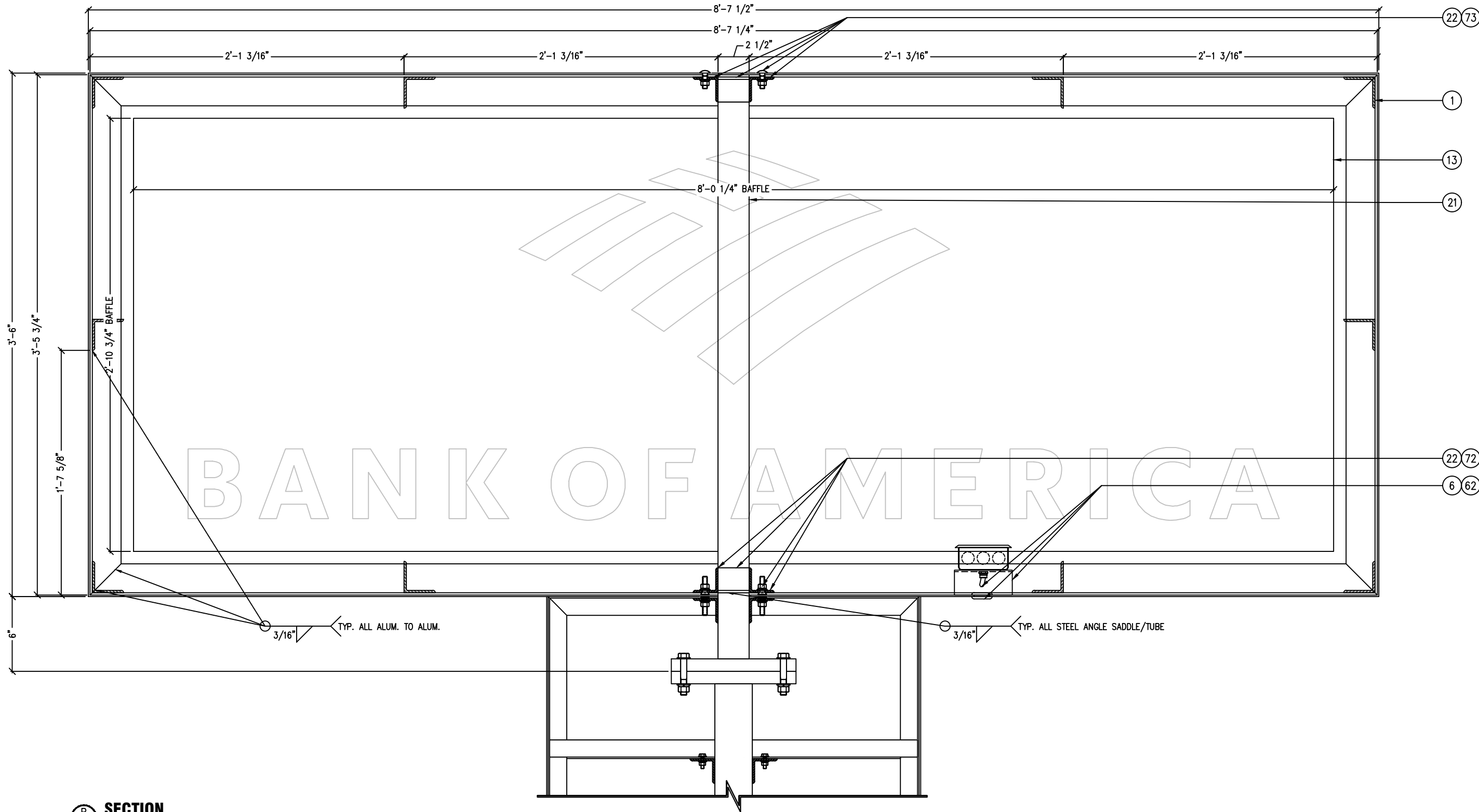
SIGN ID: **B2nx**

TITLE
3'-6" X 8'-7 1/2" X 6'-0 1/8" OAH D/F ILL.
MONUMENT

DRAWINGS ARE THE EXCLUSIVE PROPERTY OF STRATUS, ANY UNAUTHORIZED USE OR DUPLICATION IS NOT PERMITTED. THIS DESIGN IS INTENDED FOR USE BY STRATUS AND THEIR APPROVED VENDORS IN FABRICATION, ASSEMBLY AND INSTALLATION. STRATUS MAKES NO CLAIM TO ANY STRUCTURAL, ELECTRICAL, MECHANICAL OR FOUNDATION ENGINEERING IF THIS DESIGN IS USED OUTSIDE OF STRATUS AND THE APPROVED VENDORS.



LOCATION:	VARIOUS
LOCATION No.:	-
REQUEST No.:	31382
DRAWN BY:	SAGAR PATEL
DATE DRAWN:	04/02/2025
DRAWING SCALE:	AS NOTED

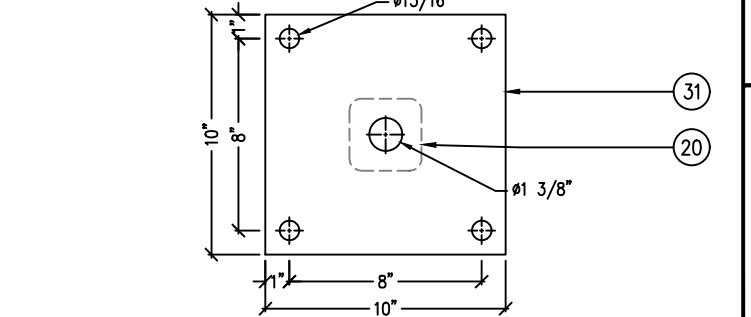
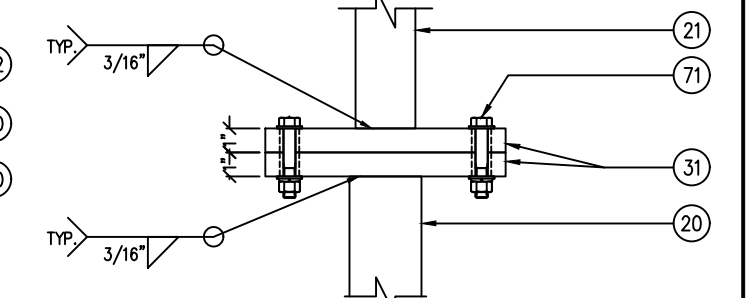
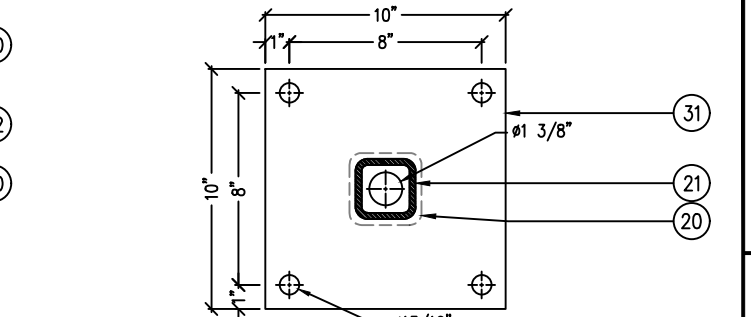
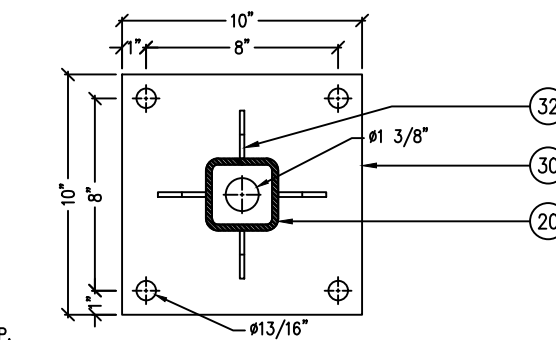
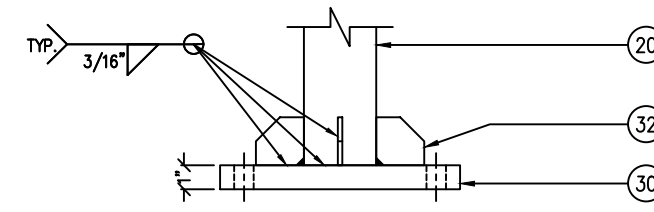
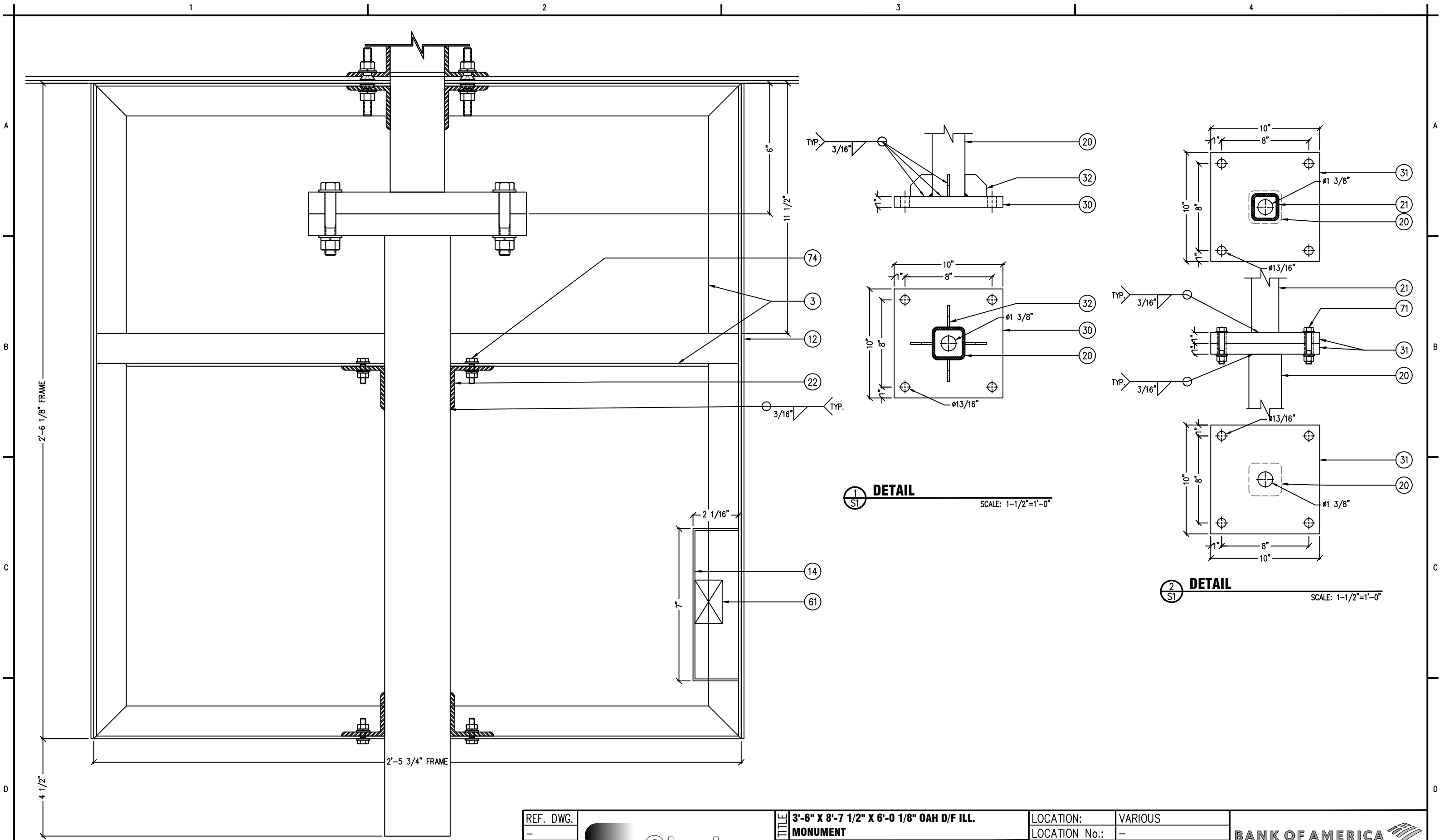
BANK OF AMERICA	
CHECKED BY:	-
DATE CHECKED:	-
FILE: BOA2252C	SHEET: 2/7



SECTION

SCALE: 1-1/2"=1'-0"

REF. DWG.		TITLE	3'-6" X 8'-7 1/2" X 6'-0 1/8" OAH D/F ILL. MONUMENT	LOCATION:	VARIOUS			
-		DRAWINGS ARE THE EXCLUSIVE PROPERTY OF STRATUS, ANY UNAUTHORIZED USE OR DUPLICATION IS NOT PERMITTED. THIS DESIGN IS INTENDED FOR USE BY STRATUS AND THEIR APPROVED VENDORS IN FABRICATION, ASSEMBLY AND INSTALLATION. STRATUS MAKES NO CLAIM TO ANY STRUCTURAL, ELECTRICAL, MECHANICAL OR FOUNDATION ENGINEERING IF THIS DESIGN IS USED OUTSIDE OF STRATUS AND THE APPROVED VENDORS.	LOCATION No.:	-				
-		SIGN ID: B2nx	REQUEST No.:	31382	DRAWN BY:	SAGAR PATEL	CHECKED BY:	-
-			DATE DRAWN:	04/02/2025	DATE CHECKED:	-	FILE:	BOA2252C
-			DRAWING SCALE:	AS NOTED	SHEET:	3/7		





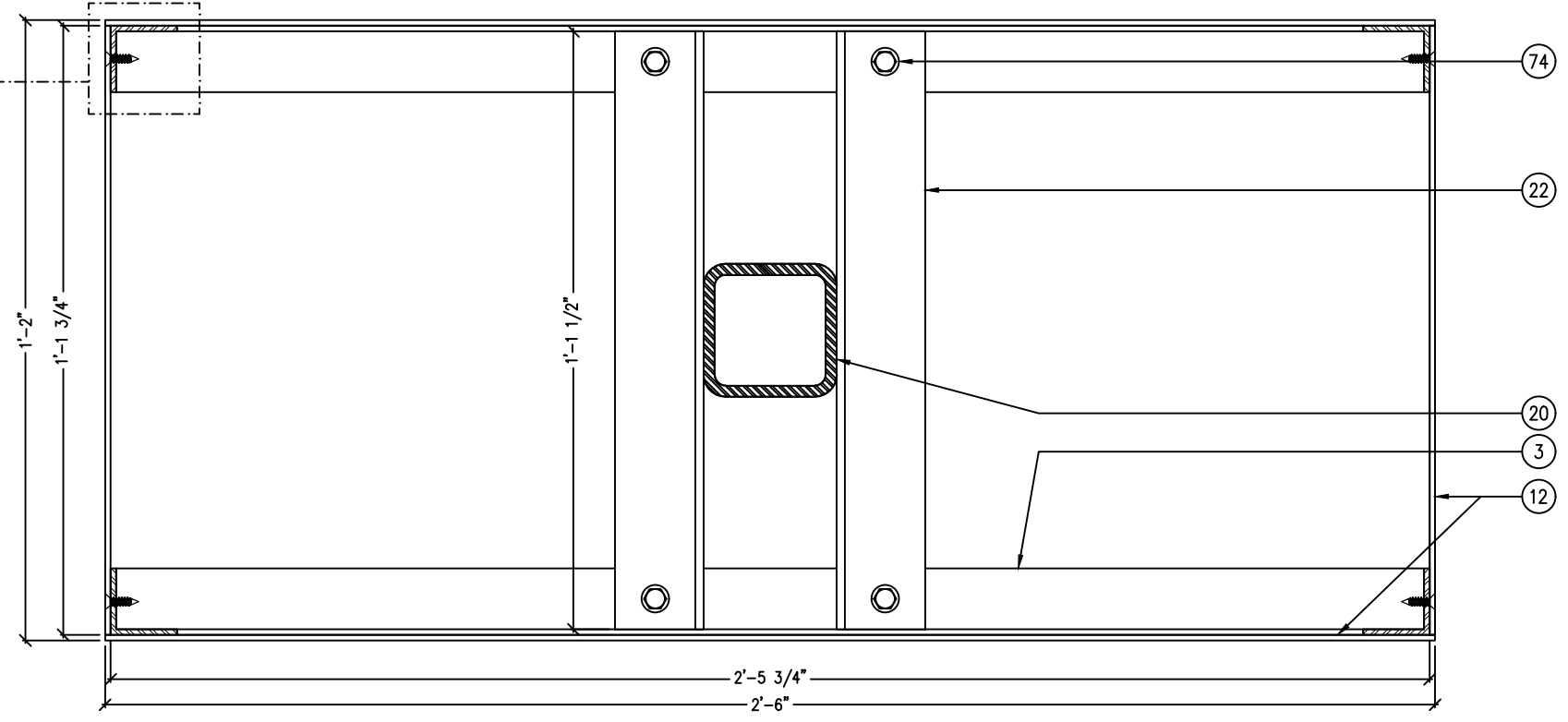
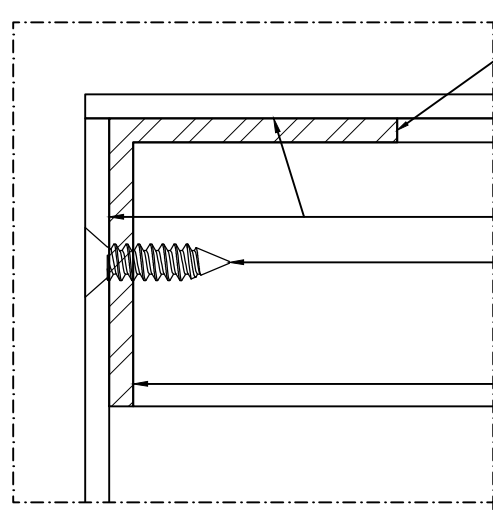
1 **DETAIL** SCALE: 1-1/2"=1'-0"

2 **DETAIL** SCALE: 1-1/2"=1'-0"

CLADDING FRAME



SCALE: 3"=1'-0"

REF. DWG.		TITLE	3'-6" X 8'-7 1/2" X 6'-0 1/8" OAH D/F ILL. MONUMENT	LOCATION:	VARIOUS			
-		DRAWINGS ARE THE EXCLUSIVE PROPERTY OF STRATUS, ANY UNAUTHORIZED USE OR DUPLICATION IS NOT PERMITTED. THIS DESIGN IS INTENDED FOR USE BY STRATUS AND THEIR APPROVED VENDORS IN FABRICATION, ASSEMBLY AND INSTALLATION. STRATUS MAKES NO CLAIM TO ANY STRUCTURAL, ELECTRICAL, MECHANICAL OR FOUNDATION ENGINEERING IF THIS DESIGN IS USED OUTSIDE OF STRATUS AND THE APPROVED VENDORS.	LOCATION No.:	-	CHECKED BY:		-	
-		SIGN ID: B2nx	REQUEST No.:	31382	DRAWN BY:	SAGAR PATEL	DATE CHECKED:	-
-			DATE DRAWN:	04/02/2025	DRAWING SCALE:	AS NOTED	FILE:	BOA2252C
-							SHEET:	4/7



C SECTION

SCALE: 3"=1'-0"

REF. DWG.		TITLE	3'-6" X 8'-7 1/2" X 6'-0 1/8" OAH D/F ILL. MONUMENT	LOCATION:	VARIOUS			
-		DRAWINGS ARE THE EXCLUSIVE PROPERTY OF STRATUS, ANY UNAUTHORIZED USE OR DUPLICATION IS NOT PERMITTED. THIS DESIGN IS INTENDED FOR USE BY STRATUS AND THEIR APPROVED VENDORS IN FABRICATION, ASSEMBLY AND INSTALLATION. STRATUS MAKES NO CLAIM TO ANY STRUCTURAL, ELECTRICAL, MECHANICAL OR FOUNDATION ENGINEERING IF THIS DESIGN IS USED OUTSIDE OF STRATUS AND THE APPROVED VENDORS.	LOCATION No.:	-	CHECKED BY:			-
-		SIGN ID: B2nx	REQUEST No.:	31382	DRAWN BY:	SAGAR PATEL	DATE CHECKED:	-
-			DATE DRAWN:	04/02/2025	DRAWING SCALE:	AS NOTED	FILE:	BOA2252C
-							SHEET:	5/7

Customer Name	Bank of America
Job #	
Height	3'-5 7/8"
Depth	4"
LED to Face Distance	4"
Date	02/27/25
Layout By:	rl
Drawing #	BOA_Freestanding Signs_B2nx

Bank of America
Freestanding Signs (Monument) - Double Sided

BILL OF MATERIALS						
Ref #	Part Number	Description	Qty	Unit	w/unit	Unit/PS
1	OTSR-X2-BW65	PRIME24V REBEL Bright White 6500K	57	mods	0.6	136
2	ASU2-100-24U	98W-24V Power Supply	1	pcs	N/A	N/A
3						
4						
5						

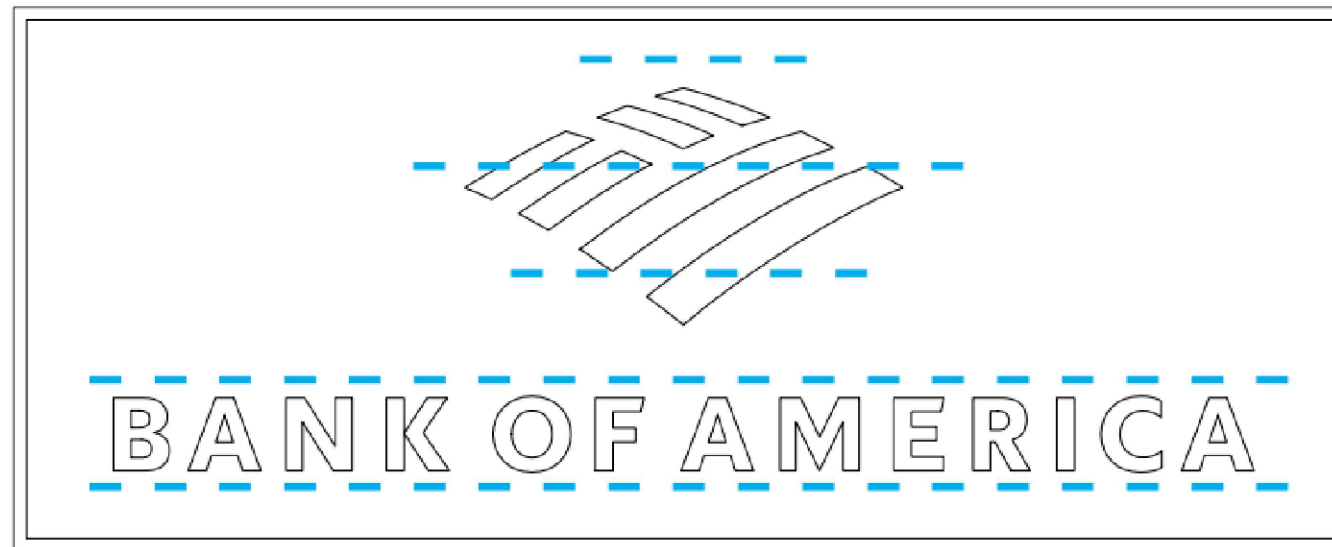
** BOM is for ONE SIDE only

SCALE: 1:12

SIGN TYPE: B2nx

**Refer to the datasheet for product and packaging sizes
**Lattice and modules not cut to size

Cabinet: 8'-7 1/2" x 3'-5 7/8"
CAP HT: 5 5/8"



5" m-m (2.4 mpf)
8.25" r-r (1.45 rpf)
3.48 mod/sqft

57 mods
1 p/s

VALI DEFINITIONS	
V (Vinyl)	Plaskolite Optics Fusion
A (Acrylic/Face)	
L (LED)	OTSR-X2-BW65
Depth	4"

Bitro Group, Inc. - Note this Caution: This layout is an Estimate.

Recommendation #1: Test a typical letter using this layout before you move forward with the rest of the sign. Recommendation #2: Before shipping or installation at a jobsite, light your letters in a darkened area to assure yourself that you are satisfied that it works properly. Be aware that since construction standards and performance expectations can vary from client to client, Bitro Group, Inc. cannot be held responsible for your results. Recommendation #3: We strongly recommend that you check our layout before you proceed with your entire sign. Then, using the knowledge you have gained through your own testing and have learned what works successfully for you, proceed accordingly. Remember, every variable alters the outcome including but not limited to: letter depth, shape of the letter, placement of the modules, reflectivity and color of the interior of the letter, thickness, type of plex, and manufacture of the plex used (sometimes plex will even vary in transluence from sheet to sheet from the same manufacture.) Please take your time to do the testing at the beginning of each project to assure your success upon completion. Assumptions: The following information and standards are not concrete and may vary however; we have found that if you are using a Blue or Green face, this estimate is based on using 2447 White plex with vinyl overlay of a medium color shade. Using darker or lighter vinyl or using a different pigmented plex may cause results to vary. If using a Red face, this estimate is based on 2793 pigment plex. Be aware that 2383 and 2415 can be difficult to light evenly. Be sure to test a letter and follow what you have learned for the rest of your letters for this sign. Also, 7328 White is a common plex used, however, testing has found as much as a 20% variation from sheet to sheet with samples tested, thus be careful and look for this issue. Please be aware that White, Blue and Green are laid out on 4" centers, while Red, Orange and Amber are laid out using 5" centers. Notifications: This LED layout is the property of Bitro Group, Inc. and is not to be shared with third party entities without written approval from Bitro Group, Inc.



300 Lodi St.
Hackensack, NJ 07601
www.bitrogroup.com

Tel (201) 641-1004
Fax (201) 641-0057



© 2024-2025 Bitro Group Inc. The artistic works depicted herein are copyright and are the exclusive property of Bitro Group Inc. and as such cannot be reproduced in whole or in part without prior written consent.

For layouts & quotations:
estimate@bitrogroup.com

LED LAYOUT

REF. DWG.		3'-6" X 8'-7 1/2" X 6'-0 1/8" OAH D/F ILL. MONUMENT	LOCATION:	VARIOUS		
-			LOCATION No.:	-		
-	DRAWINGS ARE THE EXCLUSIVE PROPERTY OF STRATUS, ANY UNAUTHORIZED USE OR DUPLICATION IS NOT PERMITTED. THIS DESIGN IS INTENDED FOR USE BY STRATUS AND THEIR APPROVED VENDORS IN FABRICATION, ASSEMBLY AND INSTALLATION. STRATUS MAKES NO CLAIM TO ANY STRUCTURAL, ELECTRICAL, MECHANICAL OR FOUNDATION ENGINEERING IF THIS DESIGN IS USED OUTSIDE OF STRATUS AND THE APPROVED VENDORS.	REQUEST No.:	31382	CHECKED BY:	-	
-		DATE DRAWN:	04/02/2025	DATE CHECKED:	-	
-		SIGN ID: B2nx	DRAWING SCALE:	AS NOTED	FILE: BOA2252C	SHEET: 6/7
-						

REV.	REQUEST No.	REVISION DESCRIPTION	DRAWN BY:	DATE	CHECKED BY:	DATE
B	33969	ADDED STRUT PART NUMBER, UPDATED SECTION VIEW FOR FACE RETURNS, ADDED FACE FRAME DIMENSIONS	SP	01/02/2026	-	-
C	34497	REVISED V-GROOVED FACE ANGLE TO 3X3X.125 ANGLE (WITH NOTCH ALONG TOP EDGE ONLY), REMOVED SECOND SURFACE FACE ANGLE FRAME, ADJUSTED FACE CLOSURE FRAME TO 2X1X.125 ANGLES ENDING SHORT OF ENDS OF FACE, REVISED HINGE POSITION TO OPEN, ADDED DRAIN HOLES, REMOVED GAS STRUTS, UPDATED TO STANDARD MATCH PLATES/HARDWARE	SP	02/03/2026	-	-
-	-	-	-	-	-	-

REF. DWG.		TITLE	3'-6" X 8'-7 1/2" X 6'-0 1/8" OAH D/F ILL. MONUMENT	LOCATION:	VARIOUS			
-		DRAWINGS ARE THE EXCLUSIVE PROPERTY OF STRATUS, ANY UNAUTHORIZED USE OR DUPLICATION IS NOT PERMITTED. THIS DESIGN IS INTENDED FOR USE BY STRATUS AND THEIR APPROVED VENDORS IN FABRICATION, ASSEMBLY AND INSTALLATION. STRATUS MAKES NO CLAIM TO ANY STRUCTURAL, ELECTRICAL, MECHANICAL OR FOUNDATION ENGINEERING IF THIS DESIGN IS USED OUTSIDE OF STRATUS AND THE APPROVED VENDORS.	LOCATION No.:	-				
-		SIGN ID: B2nx	REQUEST No.:	31382	DRAWN BY:	SAGAR PATEL	CHECKED BY:	-
-			DATE DRAWN:	04/02/2025	DATE CHECKED:	-	FILE:	BOA2252C
-			DRAWING SCALE:	AS NOTED	SHEET:	7/7		