



NORTH SIDE



WEST SIDE



APPROACHING SOUTH SIDE



SOUTH SIDE



APPROACHING EAST SIDE



EAST SIDE

COPYRIGHT © 2016 KAHLER SLATER, INC. ALL RIGHTS RESERVED



SITE APPROACH FROM NORTH



SITE APPROACH FROM SOUTH





1 (North of Brady St Bridge)



2



3



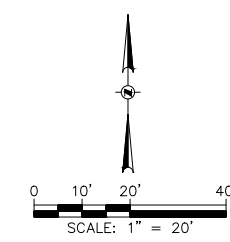
4



5



6



LEGEND

- ▲ CONTROL POINT
- R BAR REBAR
- MANHOLE
- ⊙ WV WATER VALVE
- ⊙ FH FIRE HYDRANT
- YL YARD LIGHT
- ⊙ IRRIGATION CONTROL BOX
- TILE DRAIN TILE
- CO CLEANOUT
- SUMP D DOWNSPOUT
- + c.c. CHISELED CROSS
- EMH ELECTRIC MANHOLE
- TMH TELEPHONE MANHOLE
- ⊙ WVP WATER VALVE PIT
- SIGN
- ⊙ BUSH
- ⊙ 2' DECIDUOUS TREE
- ~~~~~ EDGE OF BUSHES
- ~~~~~ EDGE OF WOODS
- - - - - BURIED CABLE TV LINE
- - - - - BURIED ELECTRIC LINE
- - - - - BURIED GAS MAIN
- - - - - BURIED COMBINED SEWER
- - - - - BURIED TELEPHONE LINE
- - - - - BURIED WATER MAIN
- - - - - BURIED BUREAU OF ELECTRICAL SERVICE LINE
- P/L EXISTING PROPERTY LINE
- R/W EXISTING RIGHT OF WAY LINE

SURVEY NOTES

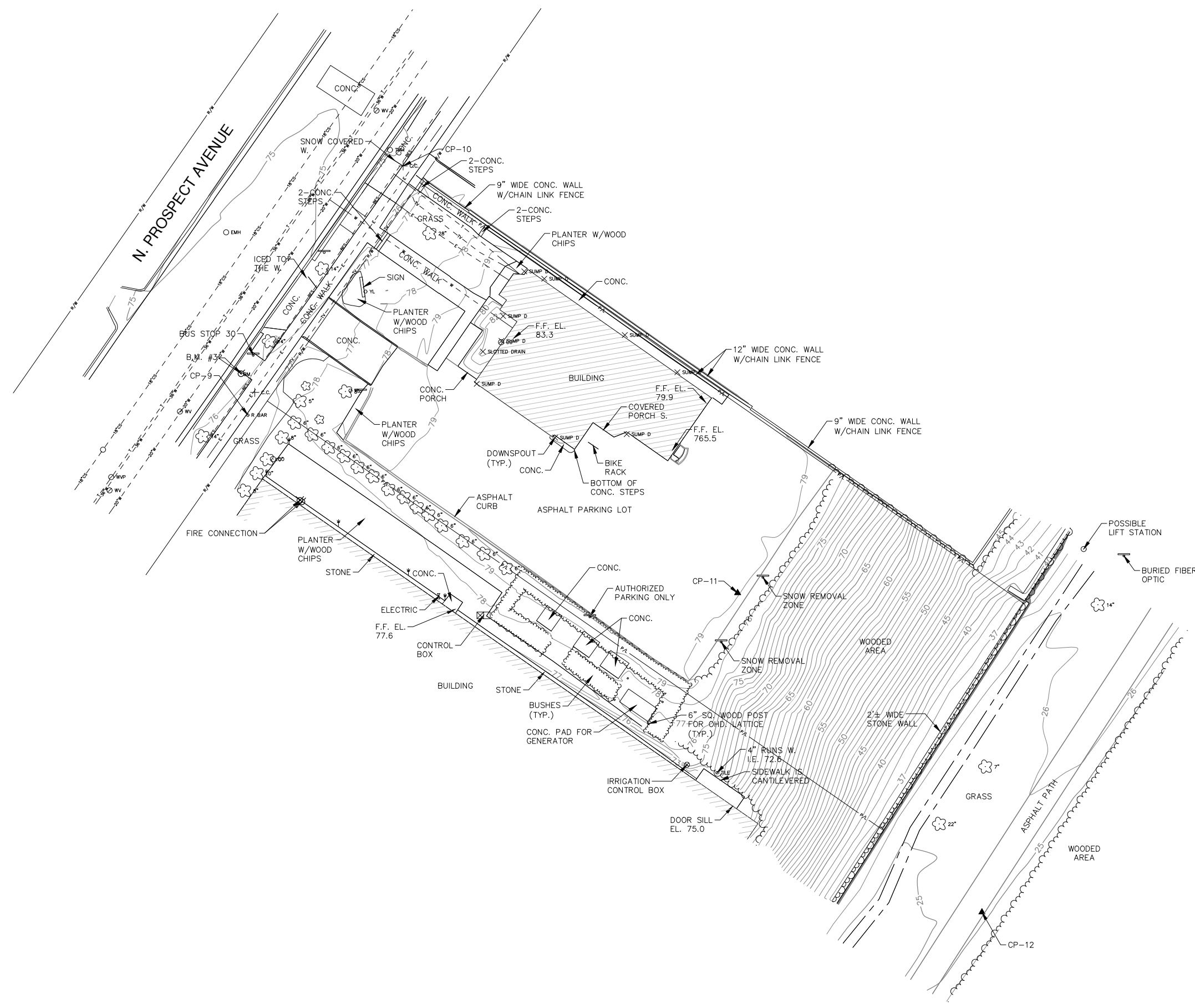
1. THE BASE SURVEY WAS PREPARED BY GRAEF IN FEBRUARY, 2016. ALL UNDERGROUND UTILITIES AND STRUCTURES HAVE BEEN SHOWN TO A REASONABLE DEGREE OF ACCURACY AND IT SHALL BE THE CONTRACTOR'S RESPONSIBILITY TO VERIFY THEIR EXACT LOCATION AND TO AVOID DAMAGE THERETO.
2. COORDINATES ARE BASED ON THE WISCONSIN COUNTY COORDINATE SYSTEM (WCCS), MILWAUKEE COUNTY, NORTH AMERICAN DATUM OF 1983 (NAD83(2011), ELEVATIONS ARE IN THE CITY OF MILWAUKEE VERTICAL DATUM, NGVD29 -580.603

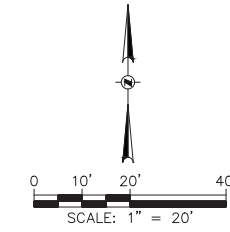
BENCHMARKS

- B.M. - NORTHWEST FLANGE BOLT ON THE FIRE HYDRANT AT THE NORTHEAST CORNER OF N. WARREN AVE. AND E. ALBION ST. ELEVATION = 65.18
- B.M. #3 - CHISELED CROSS ON THE SOUTHWEST TOP FLANGE BOLT ON THE FIRE HYDRANT ON THE EAST SIDE OF N. PROSPECT AVE. FIRST HYDRANT NORTH OF E. ALBION ST. ELEVATION = 77.82

CONTROL POINTS

- | | |
|--|--|
| CP-9
REBAR WITH GRAEF YELLOW CAP
N. 303,661.98
E. 610,274.93
EL. 76.28 | CP-11
MAG NAIL
N. 303,595.15
E. 610,458.95
EL. 79.10 |
| CP-10
CHISELED CROSS
N. 303,755.63
E. 610,333.26
EL. 74.45 | CP-12
MAG NAIL
N. 303,475.19
E. 610,560.73
EL. 25.34 |





LEGEND

- ▲ CONTROL POINT
- R BAR REBAR
- MANHOLE
- ⊙ WV WATER VALVE
- ⊙ FH FIRE HYDRANT
- YL YARD LIGHT
- ⊙ IRRIGATION CONTROL BOX
- TILE DRAIN TILE
- CO CLEANOUT
- SUMP D DOWNSPOUT
- + c.c. CHISELED CROSS
- EMH ELECTRIC MANHOLE
- TMH TELEPHONE MANHOLE
- ⊙ WVP WATER VALVE PIT
- SIGN
- ⊙ BUSH
- ⊙ 2' DECIDUOUS TREE
- EDGE OF BUSHES
- EDGE OF WOODS
- TV — BURIED CABLE TV LINE
- E — BURIED ELECTRIC LINE
- G — BURIED GAS MAIN
- 18" CS — BURIED COMBINED SEWER
- T — BURIED TELEPHONE LINE
- W — BURIED WATER MAIN
- BES — BURIED BUREAU OF ELECTRICAL SERVICE LINE
- P/L — EXISTING PROPERTY LINE
- R/W — EXISTING RIGHT OF WAY LINE

SURVEY NOTES

1. THE BASE SURVEY WAS PREPARED BY GRAEF IN FEBRUARY, 2016. ALL UNDERGROUND UTILITIES AND STRUCTURES HAVE BEEN SHOWN TO A REASONABLE DEGREE OF ACCURACY AND IT SHALL BE THE CONTRACTOR'S RESPONSIBILITY TO VERIFY THEIR EXACT LOCATION AND TO AVOID DAMAGE THERETO.
2. COORDINATES ARE BASED ON THE WISCONSIN COUNTY COORDINATE SYSTEM (WCCS), MILWAUKEE COUNTY, NORTH AMERICAN DATUM OF 1983 (NAD83(2011), ELEVATIONS ARE IN THE CITY OF MILWAUKEE VERTICAL DATUM, NGVD29 -580.603

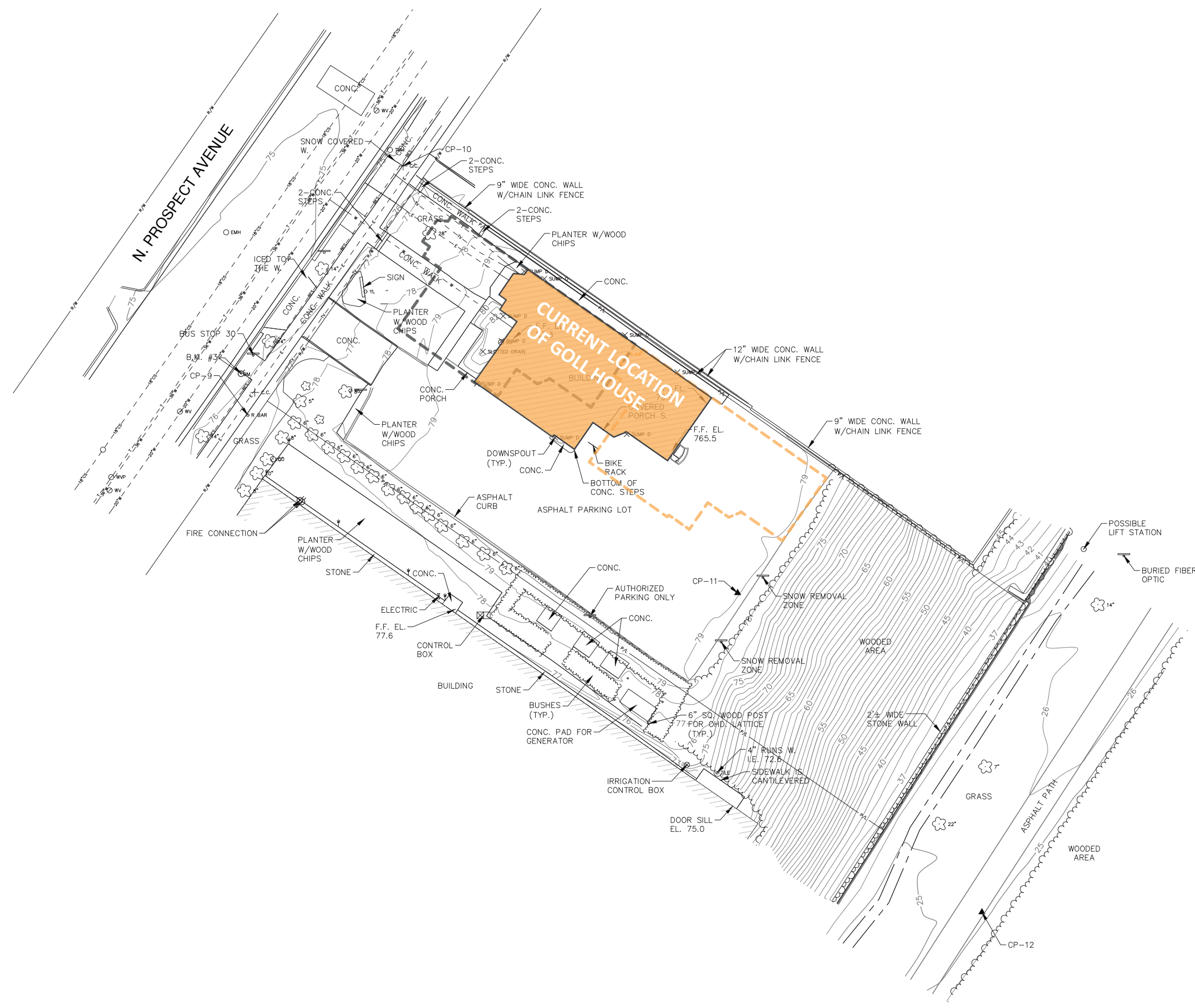
BENCHMARKS

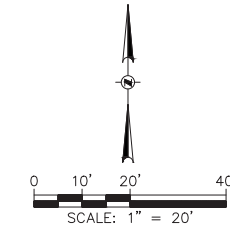
- B.M. - NORTHWEST FLANGE BOLT ON THE FIRE HYDRANT AT THE NORTHEAST CORNER OF N. WARREN AVE. AND E. ALBION ST. ELEVATION = 65.18
- B.M. #3 - CHISELED CROSS ON THE SOUTHWEST TOP FLANGE BOLT ON THE FIRE HYDRANT ON THE EAST SIDE OF N. PROSPECT AVE. FIRST HYDRANT NORTH OF E. ALBION ST. ELEVATION = 77.82

CONTROL POINTS

- | | |
|--|--|
| CP-9
REBAR WITH GRAEF YELLOW CAP
N. 303,661.98
E. 610,274.93
EL. 76.28 | CP-11
MAG NAIL
N. 303,595.15
E. 610,458.95
EL. 79.10 |
| CP-10
CHISELED CROSS
N. 303,755.63
E. 610,333.26
EL. 74.45 | CP-12
MAG NAIL
N. 303,475.19
E. 610,560.73
EL. 25.34 |

GOLL HOUSE EXISTING LOCATION





LEGEND

- ▲ CONTROL POINT
- R BAR REBAR
- MANHOLE
- ⊙ WV WATER VALVE
- ⊙ FH FIRE HYDRANT
- YL YARD LIGHT
- ⊙ IRRIGATION CONTROL BOX
- TILE DRAIN TILE
- CO CLEANOUT
- SUMP D DOWNSPOUT
- + c.c. CHISELED CROSS
- EMH ELECTRIC MANHOLE
- TMH TELEPHONE MANHOLE
- ⊙ WVP WATER VALVE PIT
- SIGN
- ⊙ BUSH
- ⊙ 2' DECIDUOUS TREE
- ~~~~~ EDGE OF BUSHES
- ~~~~~ EDGE OF WOODS
- TV- BURIED CABLE TV LINE
- E- BURIED ELECTRIC LINE
- G- BURIED GAS MAIN
- 18CS- BURIED COMBINED SEWER
- T- BURIED TELEPHONE LINE
- W- BURIED WATER MAIN
- BES- BURIED BUREAU OF ELECTRICAL SERVICE LINE
- P/L- EXISTING PROPERTY LINE
- R/W- EXISTING RIGHT OF WAY LINE

SURVEY NOTES

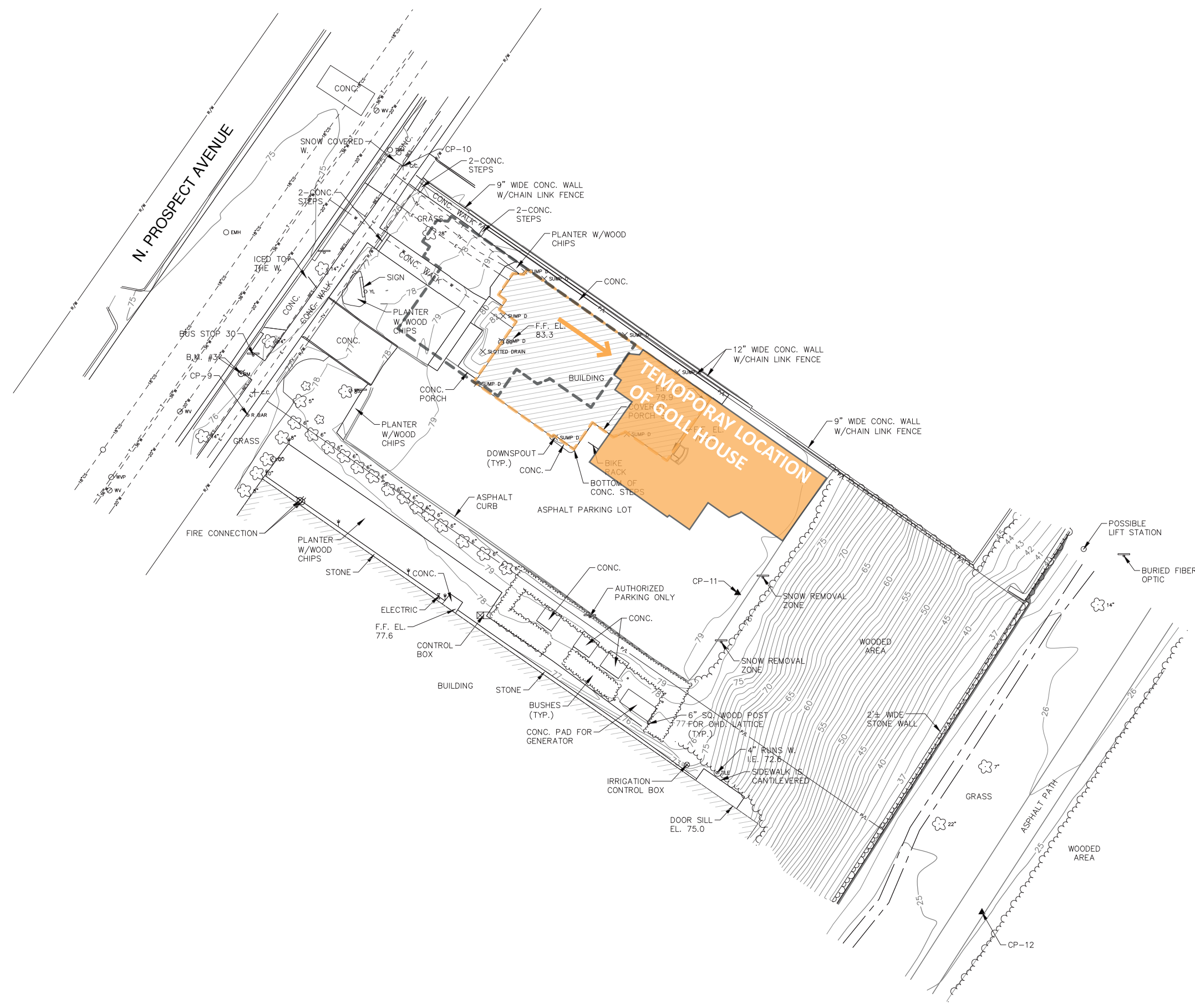
1. THE BASE SURVEY WAS PREPARED BY GRAEF IN FEBRUARY, 2016. ALL UNDERGROUND UTILITIES AND STRUCTURES HAVE BEEN SHOWN TO A REASONABLE DEGREE OF ACCURACY AND IT SHALL BE THE CONTRACTOR'S RESPONSIBILITY TO VERIFY THEIR EXACT LOCATION AND TO AVOID DAMAGE THERETO.
2. COORDINATES ARE BASED ON THE WISCONSIN COUNTY COORDINATE SYSTEM (WCCS), MILWAUKEE COUNTY, NORTH AMERICAN DATUM OF 1983 (NAD83(2011), ELEVATIONS ARE IN THE CITY OF MILWAUKEE VERTICAL DATUM, NGVD29 -580.603

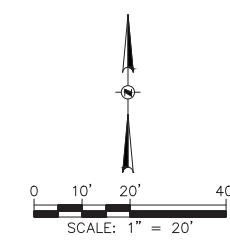
BENCHMARKS

- B.M. - NORTHWEST FLANGE BOLT ON THE FIRE HYDRANT AT THE NORTHEAST CORNER OF N. WARREN AVE. AND E. ALBION ST. ELEVATION = 65.18
- B.M. #3 - CHISELED CROSS ON THE SOUTHWEST TOP FLANGE BOLT ON THE FIRE HYDRANT ON THE EAST SIDE OF N. PROSPECT AVE. FIRST HYDRANT NORTH OF E. ALBION ST. ELEVATION = 77.82

CONTROL POINTS

- | | |
|--|--|
| CP-9
REBAR WITH GRAEF YELLOW CAP
N. 303,661.98
E. 610,274.93
EL. 76.28 | CP-11
MAG NAIL
N. 303,595.15
E. 610,458.95
EL. 79.10 |
| CP-10
CHISELED CROSS
N. 303,755.63
E. 610,333.26
EL. 74.45 | CP-12
MAG NAIL
N. 303,475.19
E. 610,560.73
EL. 25.34 |





LEGEND

- ▲ CONTROL POINT
- R BAR REBAR
- MANHOLE
- ⊙ WV WATER VALVE
- ⊙ FH FIRE HYDRANT
- YL YARD LIGHT
- ⊙ IRRIGATION CONTROL BOX
- TILE DRAIN TILE
- CO CLEANOUT
- SUMP D DOWNSPOUT
- + c.c. CHISELED CROSS
- EMH ELECTRIC MANHOLE
- TMH TELEPHONE MANHOLE
- ⊙ WVP WATER VALVE PIT
- SIGN
- ⊙ BUSH
- ⊙ 2' DECIDUOUS TREE
- EDGE OF BUSHES
- EDGE OF WOODS
- TV — BURIED CABLE TV LINE
- E — BURIED ELECTRIC LINE
- G — BURIED GAS MAIN
- 18" CS — BURIED COMBINED SEWER
- T — BURIED TELEPHONE LINE
- W — BURIED WATER MAIN
- BES — BURIED BUREAU OF ELECTRICAL SERVICE LINE
- P/L — EXISTING PROPERTY LINE
- R/W — EXISTING RIGHT OF WAY LINE

SURVEY NOTES

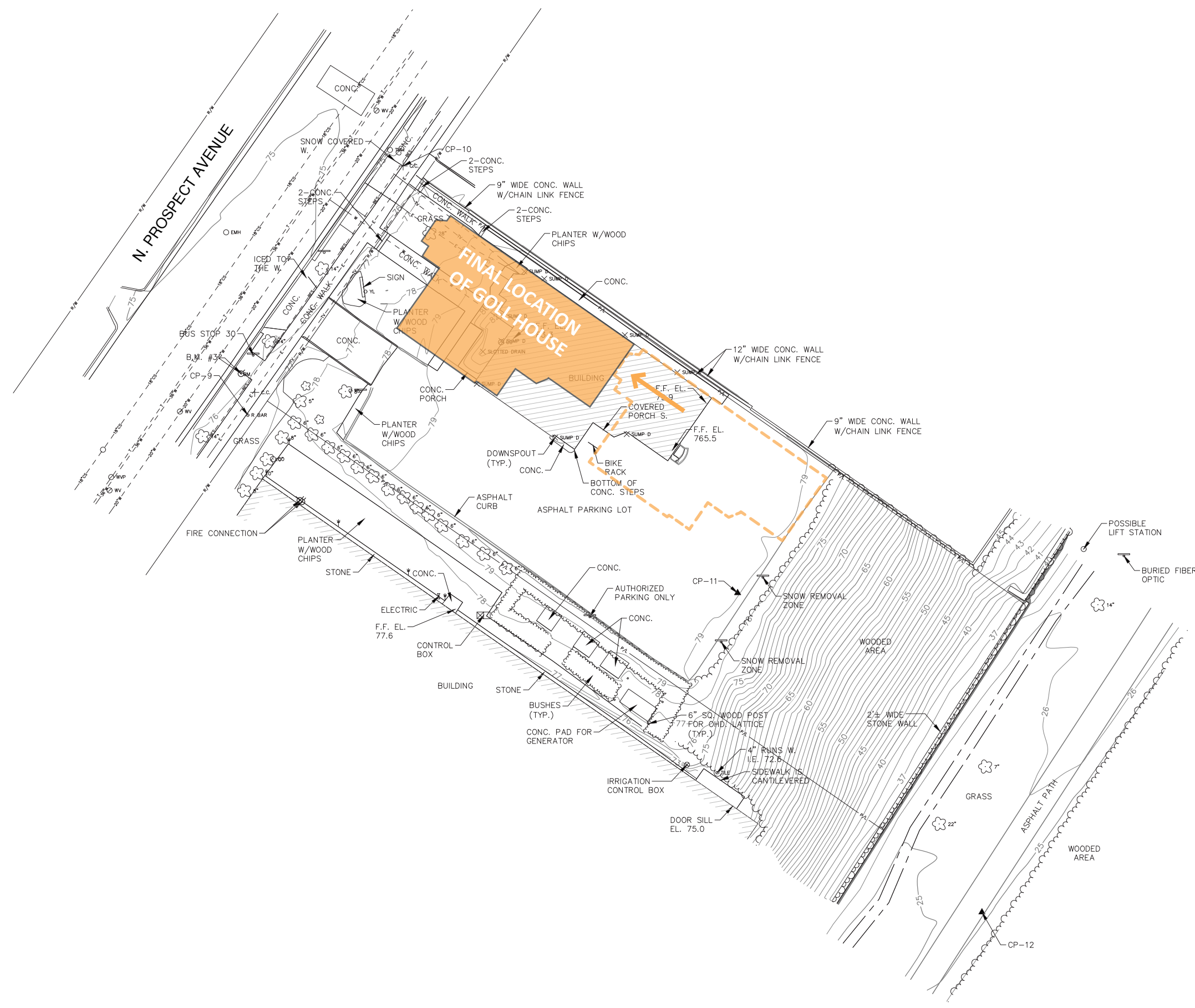
1. THE BASE SURVEY WAS PREPARED BY GRAEF IN FEBRUARY, 2016. ALL UNDERGROUND UTILITIES AND STRUCTURES HAVE BEEN SHOWN TO A REASONABLE DEGREE OF ACCURACY AND IT SHALL BE THE CONTRACTOR'S RESPONSIBILITY TO VERIFY THEIR EXACT LOCATION AND TO AVOID DAMAGE THERETO.
2. COORDINATES ARE BASED ON THE WISCONSIN COUNTY COORDINATE SYSTEM (WCCS), MILWAUKEE COUNTY, NORTH AMERICAN DATUM OF 1983 (NAD83(2011), ELEVATIONS ARE IN THE CITY OF MILWAUKEE VERTICAL DATUM, NGVD29 -580.603

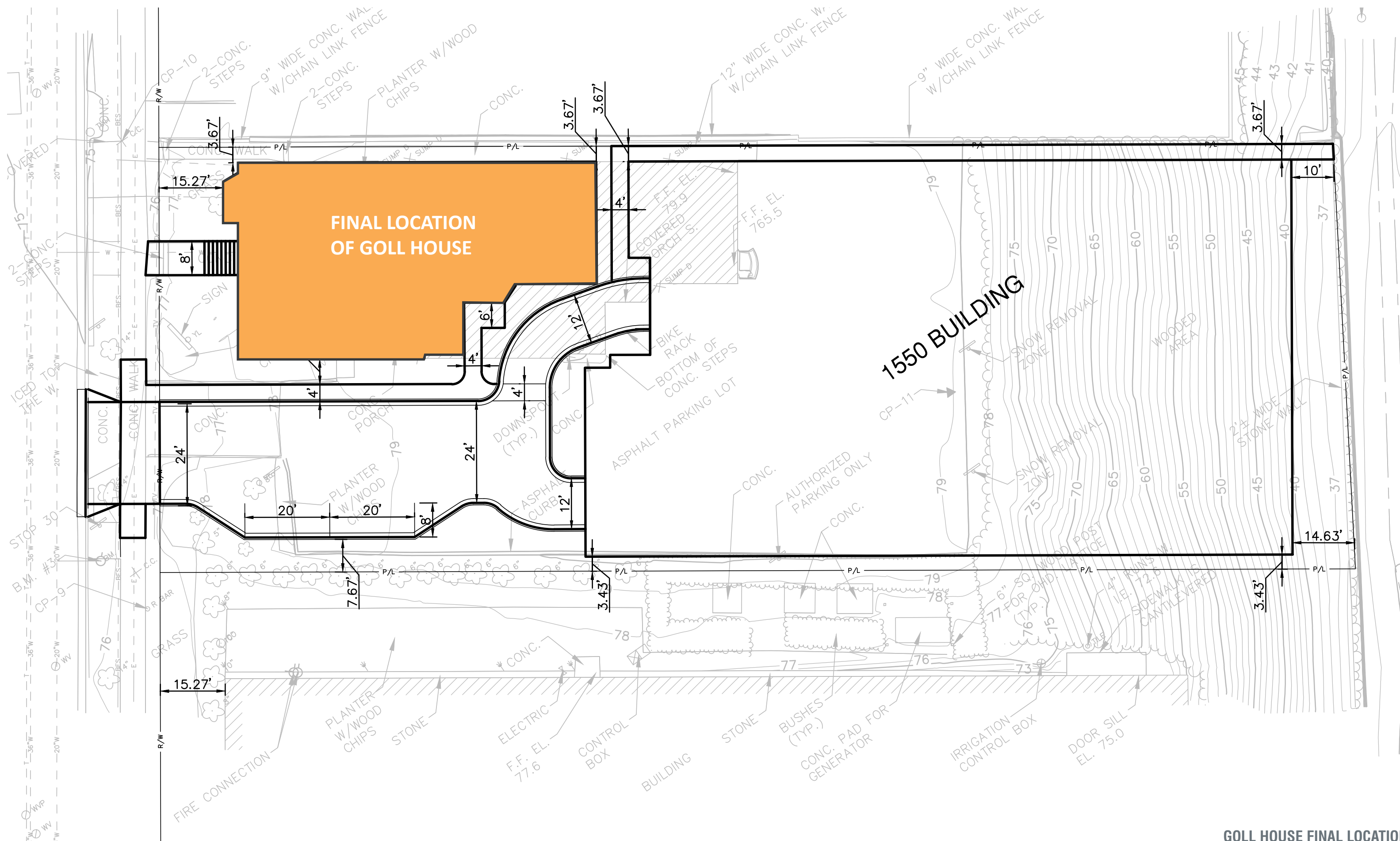
BENCHMARKS

- B.M. - NORTHWEST FLANGE BOLT ON THE FIRE HYDRANT AT THE NORTHEAST CORNER OF N. WARREN AVE. AND E. ALBION ST. ELEVATION = 65.18
- B.M. #3 - CHISELED CROSS ON THE SOUTHWEST TOP FLANGE BOLT ON THE FIRE HYDRANT ON THE EAST SIDE OF N. PROSPECT AVE. FIRST HYDRANT NORTH OF E. ALBION ST. ELEVATION = 77.82

CONTROL POINTS

CP-9 REBAR WITH GRAEF YELLOW CAP N. 303,661.98 E. 610,274.93 EL. 76.28	CP-11 MAG NAIL N. 303,595.15 E. 610,458.95 EL. 79.10
CP-10 CHISELED CROSS N. 303,755.63 E. 610,333.26 EL. 74.45	CP-12 MAG NAIL N. 303,475.19 E. 610,560.73 EL. 25.34





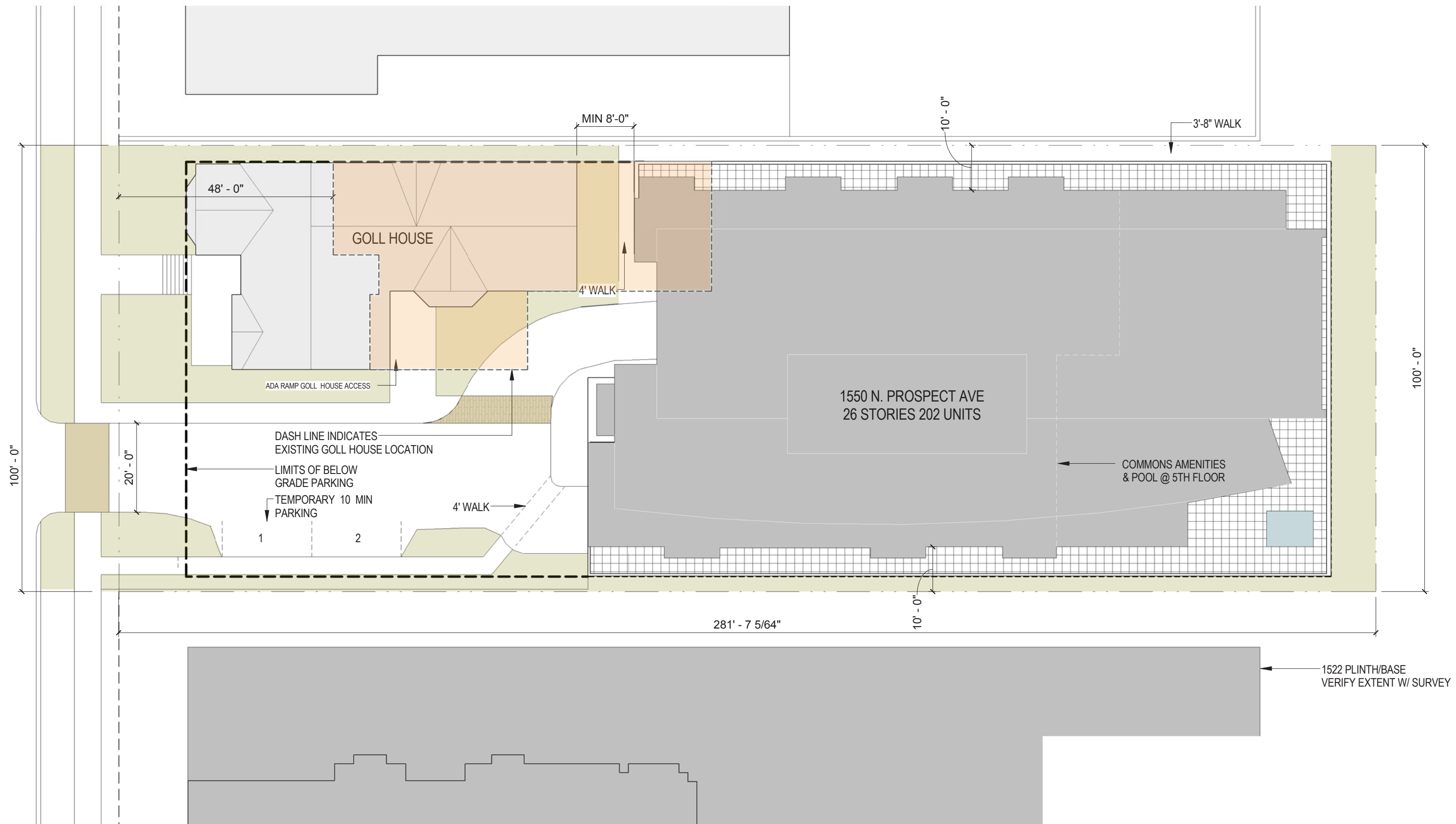
**FINAL LOCATION
OF GOLL HOUSE**

1550 BUILDING

GOLL HOUSE FINAL LOCATION

02-16-2016 | PAGE 08

COPYRIGHT © 2016 KAHLER SLATER, INC. ALL RIGHTS RESERVED.





VIEW FROM PROSPECT



VIEW FROM BLUFF SIDE

SCHEMATIC VIEWS

02-16-2016 | PAGE 10

COPYRIGHT © 2016 KAHLER SLATER, INC. ALL RIGHTS RESERVED