

FEE
TLE
PLE
HE
Existing Utility Easement
Reimbursable
Non-Reimbursable

HWY	BASIS OF EXISTING R/W	WIDTH	YEAR
IH-43	PROJECT U 077-1(13)	VARIES	1958
IH-43	PROJECT 1228-00-20	VARIES	1982

SIGN NUMBER	OWNER	OASIS NUMBER*	DOCUMENT
4-1	CLEAR CHANNEL	17145	
5-1	KOSS CORPORATION	ON PREMISE	DOC. 7672755 R. 4482, I. 2133

*OASIS=OUTDOOR ADVERTISING SIGN INVENTORY SYSTEM

CURVE C2
L=259.92'
R=1802.02'
LCH=259.70'
LCB=S07°51'14"W

CURVE C3
L=392.15'
R=1802.02'
LCH=391.38'
LCB=S05°45'06"W

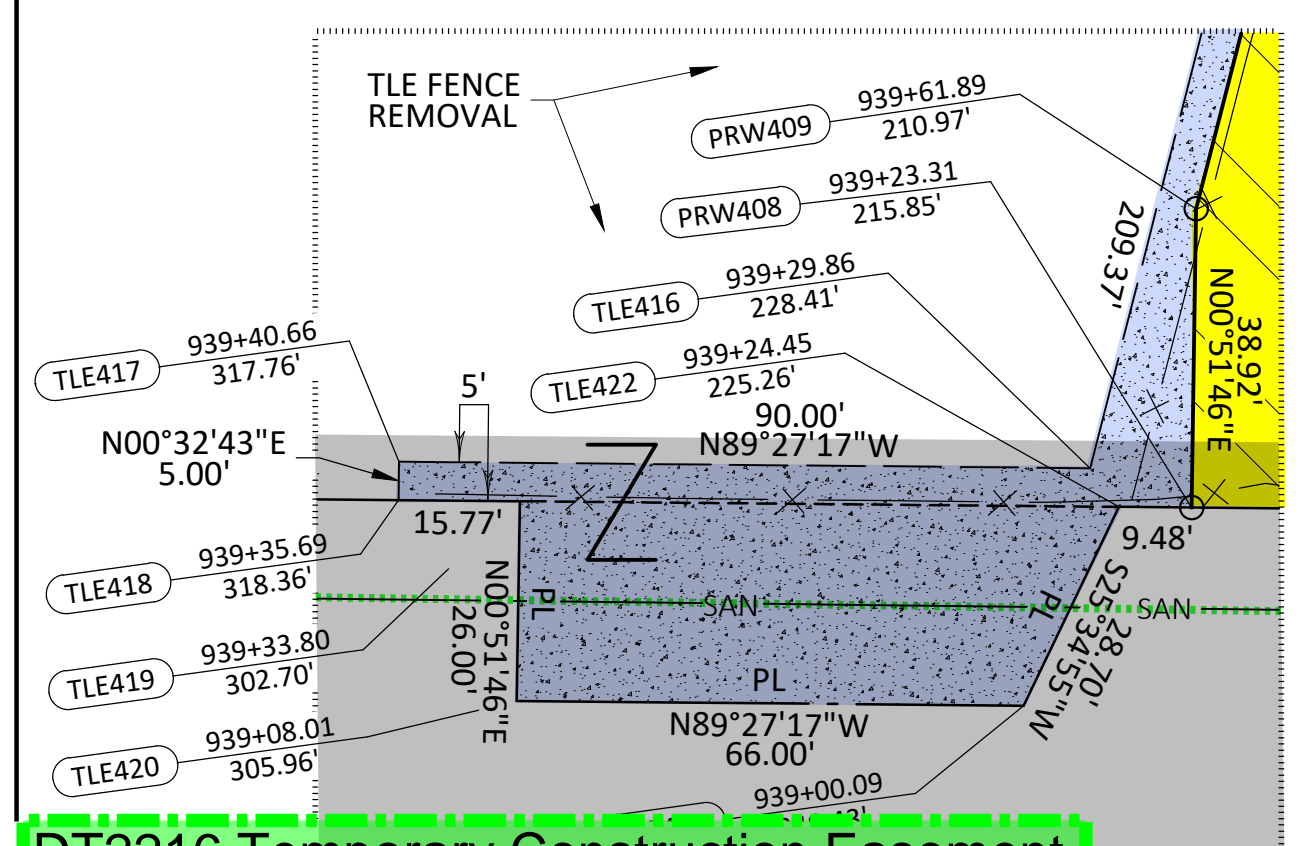
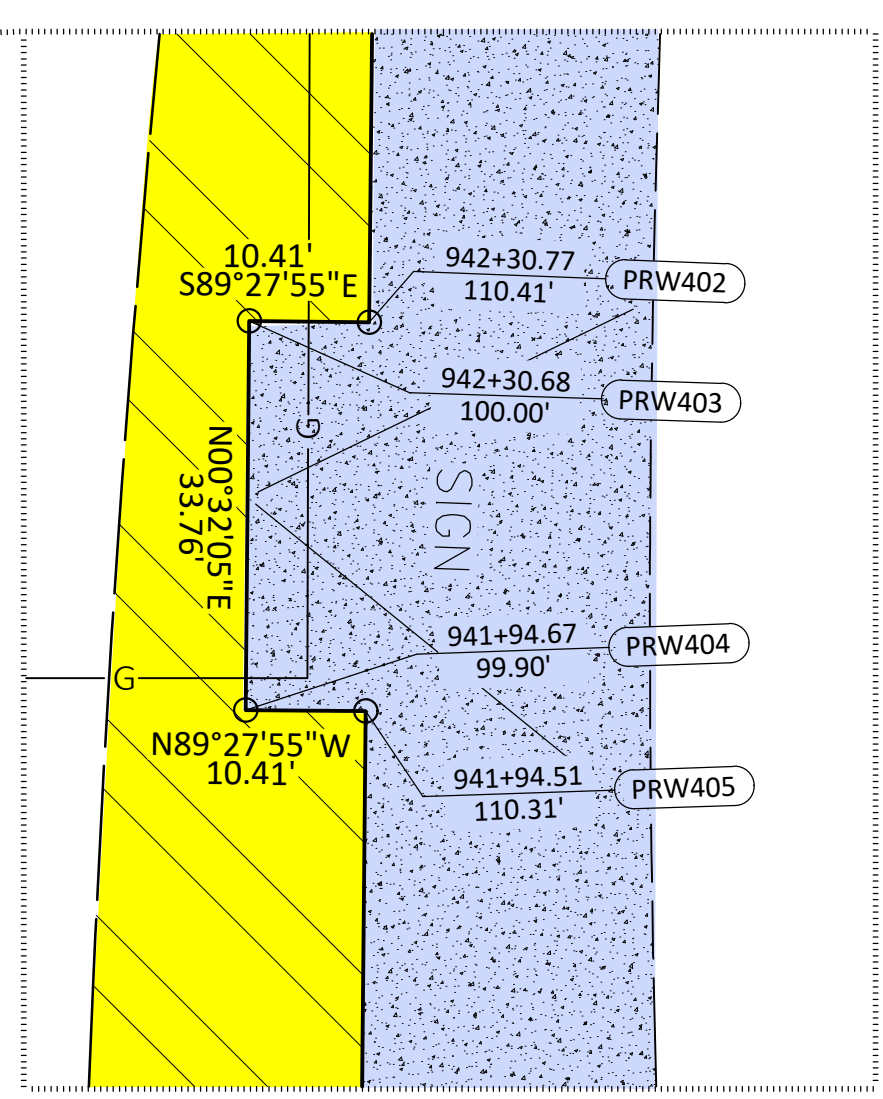
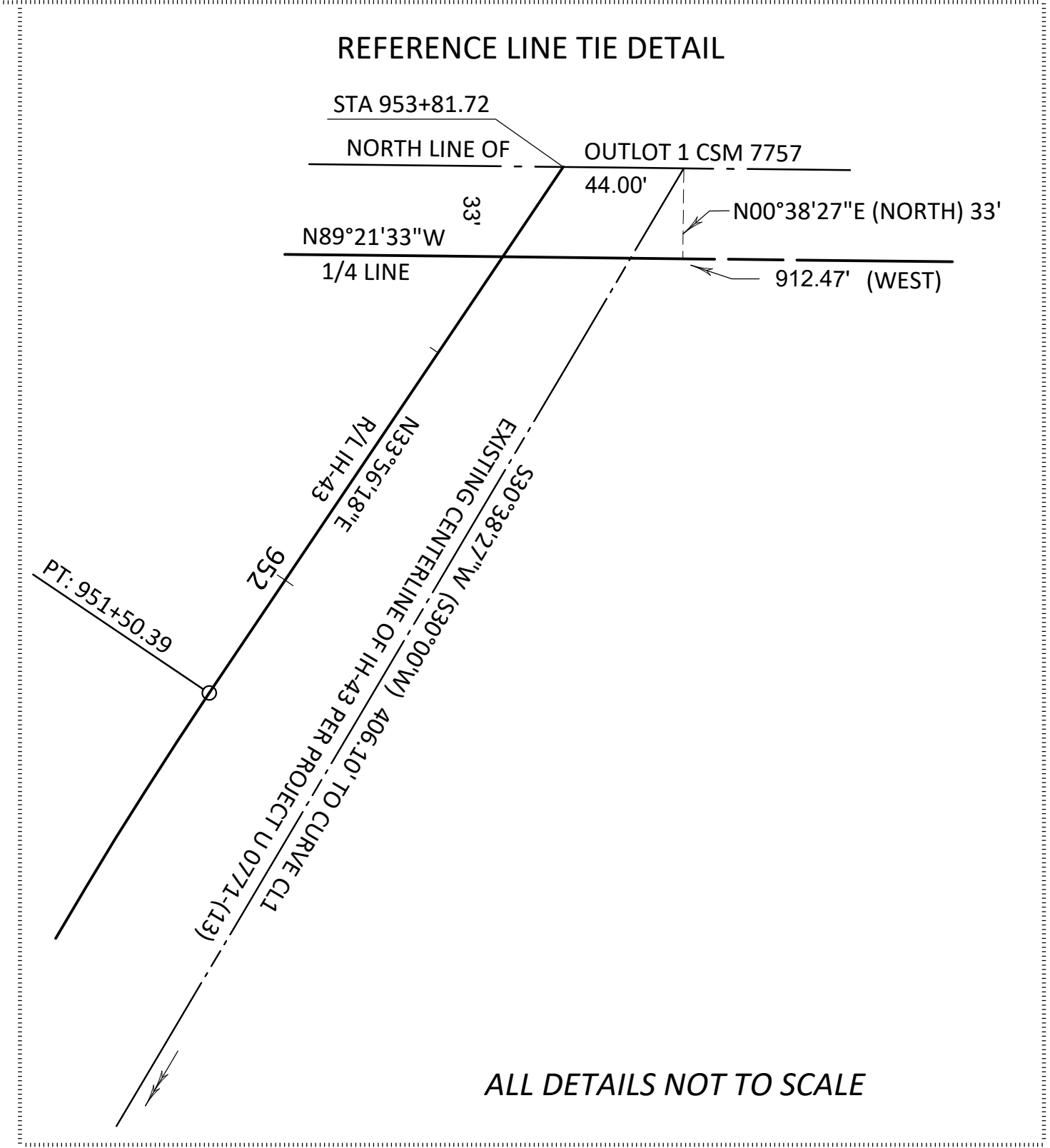
CURVE C5
L=259.73'
R=1702.02'
LCH=259.48'
LCB=N08°17'26"E

SUBCURVE C6
L=372.19'
R=1802.02'
LCH=371.53'
LCB=S06°04'09"W

SUBCURVE C7
L=19.96'
R=1802.02'
LCH=19.96'
LCB=S00°09'55"E

CITY OF MILWAUKEE

MILWAUKEE



DT2216 Temporary Construction Easement Easement Document 1469901 In Parcel 6 Existing Sanitary Sewer Parcel 6

DT1661 Quit Claim Deed By Utility Easement Document 1469905 In Existing ROW No existing facilities Parcels 4, 5 & 6

DT1660 Conveyance of Rights Easement Document 1469901 In Existing ROW Existing Sanitary Sewer Parcels 5 & 6

- (50) WE ENERGIES ELECTRIC DOC. 340784 D.1733, P.291 PCL. 4,5&6
DOC. 333023 D.4070, P.604 PCL. 4,5&6
NO EASEMENT OF RECORD PCL.5
- (51) AT&T WISCONSIN D.30723, P.604 PCL. 4,5&6
- (52) CITY OF MILWAUKEE DOC. 1469901 V.1137, P.536 PCL. 5&6 & 4
DOC. 1469905 PCL. 5

POSITIONS SHOWN ON THIS PLAT ARE REFERENCED TO THE WISCONSIN COUNTY COORDINATE SYSTEM, MILWAUKEE COUNTY ZONE, NAD83 (2007) ADJUSTMENT IN US SURVEY FEET. THE COORDINATES SHOWN ARE GRID COORDINATES AND ARE TO BE USED AS GRID OR GROUND VALUES ON THIS PLAT.

EXISTING ACCESS CONTROL ALONG I-43 IS ESTABLISHED FROM PREVIOUS PROJECT U 077-1(13). FOR THE LATEST ACCESS/ DRIVEWAY INFORMATION, CONTACT THE PLANNING UNIT OF THE WISCONSIN DEPARTMENT OF TRANSPORTATION OFFICE IN WAUKESHA.

REVISION DATE MAY 10, 2019 JAN. 22, 2020 JULY 7, 2020	DEC. 14, 2020	DATE NOV. 21, 2018	SCALE, FEET 0 50 100	HWY: I-43	'W PROJECT NUMBER 1228-22-21	PLAT SHEET 4.04
FILE NAME: 040404_RP.DWG LAYOUT NAME: 040404_RP	GRID FACTOR N/A	COUNTY: MILWAUKEE	CONSTRUCTION PROJECT NUMBER 1228-22-71	PS&E SHEET	E	