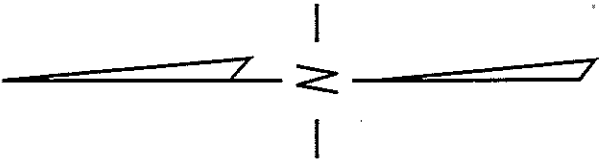
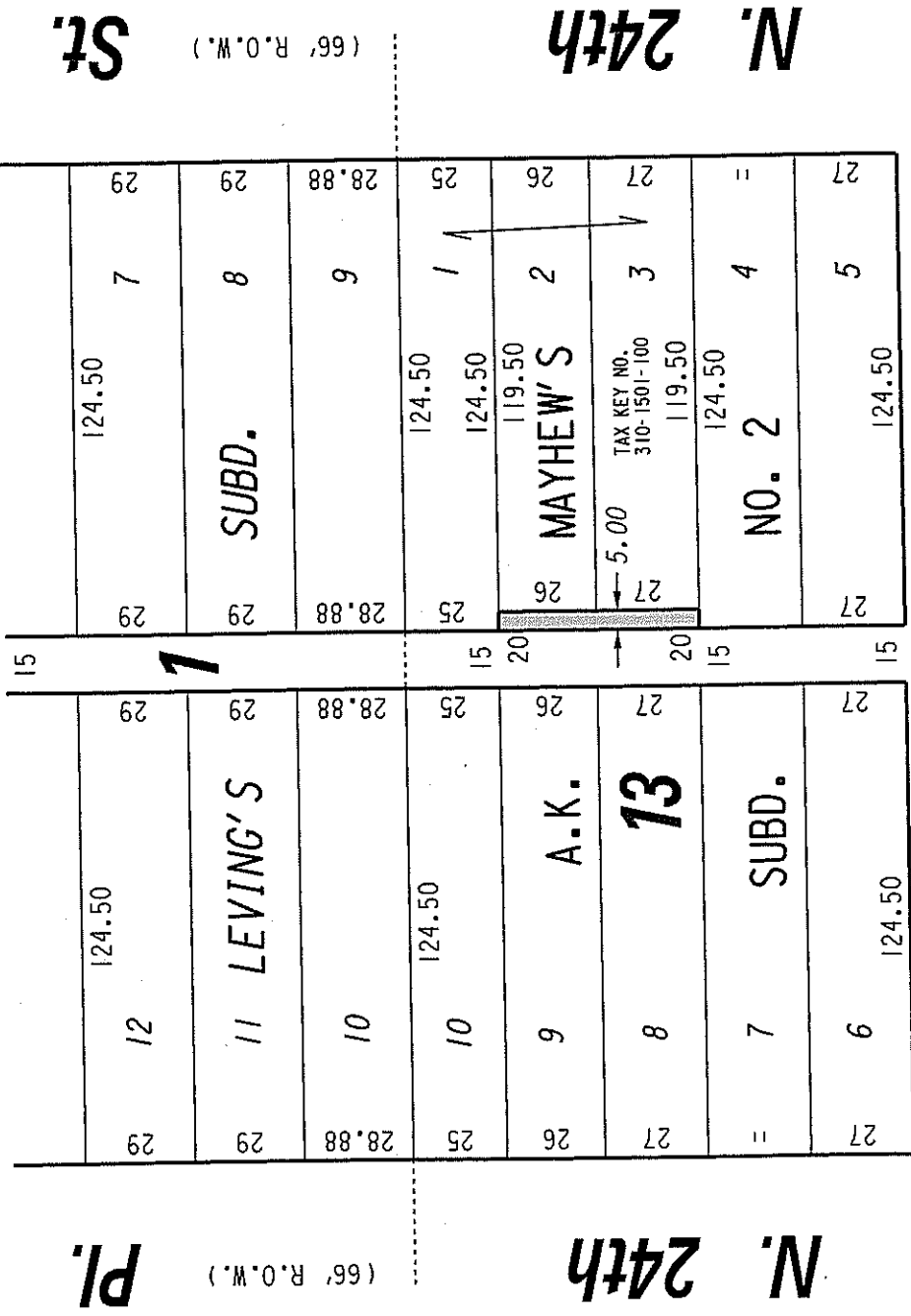


N.W. 1/4 SEC. 18, T.7N., R.22E.

310



(W. Chambers St.)



W. Locust

(60' R.O.W.)

St.

PORTION OF PUBLIC ALLEY PROPOSED TO BE VACATED

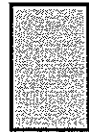


EXHIBIT "A"

FILE NO. 071396

INFRASTRUCTURE SERVICES DIVISION

MILWAUKEE, WISCONSIN

ASSIGNED TO: P.A. VELLA

CH'K'D. BY: W.E. FUCHS

DRAWN BY: P.A.V.

DATE: FEB. 7, 2008

PROJECT/GRANT NO.: WK52337257

SCALE: 1" = 50'

APPROVED BY:

Maica Lindholm

CENTRAL DRAFTING & RECORDS MANAGER

W.E. Fuchs
ENGINEER