



MILWAUKEE  
HISTORIC  
PRESERVATION  
COMMISSION

LIVING WITH HISTORY

# Certificate of Appropriateness

Milwaukee Historic Preservation Commission/200 E. Wells Street/Milwaukee, WI 53202/phone 414-286-5712/fax 414-286-3004

**Property** North Point North Historic District Lake Park  
**Description of work** Replace existing performance stage with a new shelter topped with a shed roof and made mostly of wood.  
**Date issued** 10/17/2011 PTS ID 65698 COA, music performance stage--lake park

In accordance with the provisions of Section 320-21 (11) and (12) of the Milwaukee Code of Ordinances, the Milwaukee Historic Preservation Commission has issued a certificate of appropriateness for the work listed above. The work was found to be consistent with preservation guidelines. The following conditions apply to this certificate of appropriateness:

All work will be done according to attached drawings and photos. An actual sample of the roof covering material should be supplied to HPC staff for review and approval prior to installation.

All work must be done in a craftsman-like manner, and must be completed within one year of the date this certificate was issued. Staff must approve any changes or additions to this certificate before work begins. Work that is not completed in accordance with this certificate may be subject to correction orders or citations. If you require technical assistance, please contact Paul Jakubovich of the Historic Preservation staff as follows: Phone: (414) 286-5712 Fax: (414) 286-3004 E-mail: [pjakub@milwaukee.gov](mailto:pjakub@milwaukee.gov).

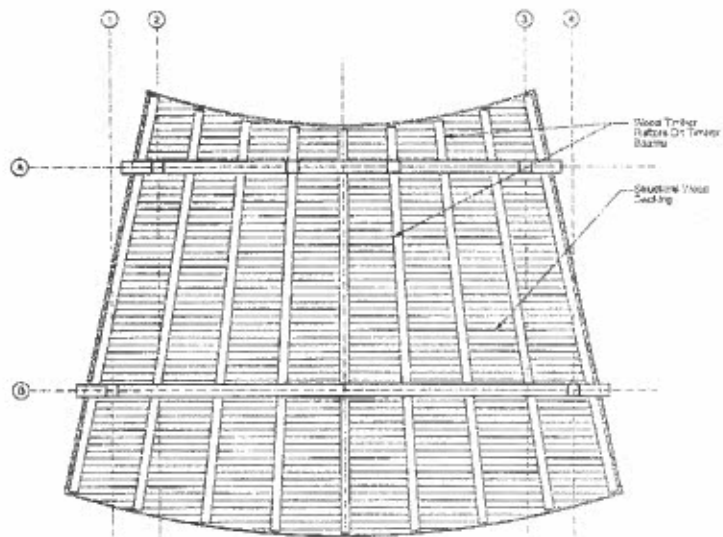
If permits are required, you are responsible for obtaining them from the Milwaukee Development Center. If you have questions about permit requirements, please consult the Development Center's web site, [www.mkedcd.org/build](http://www.mkedcd.org/build), or call (414) 286-8210.

Paul Jakubovich  
City of Milwaukee Historic Preservation

Copies to: Development Center, Ald. Nik Kovac, Inspector

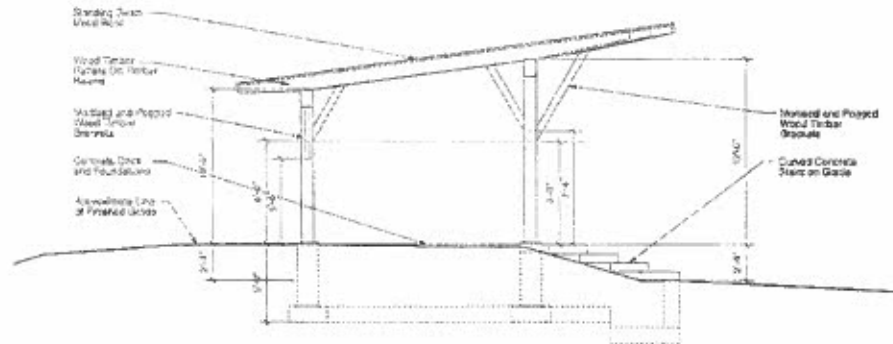


Proposed new stage



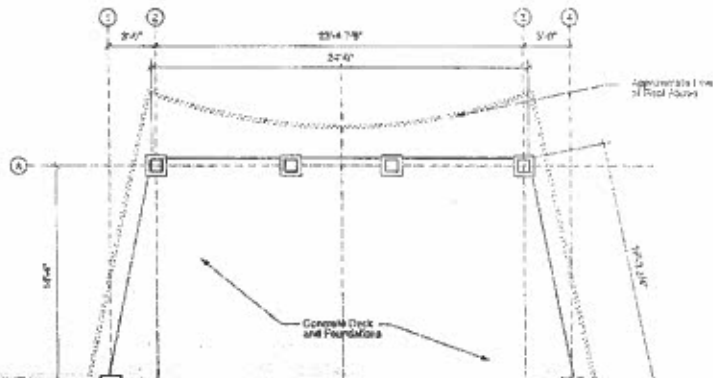
1 Reflected Ceiling Plan

Scale 3/4" = 1'-0"



2 Side Elevation

Scale 3/4" = 1'-0"



New stage elevation



Current performance stage

**Current stage to be removed**