

# DataHub Milwaukee

November 25, 2013

In Partnership with

**SysLogic**

TECHNOLOGY WITH A  
HUMAN TOUCH

# Mission

*Data Informed Collaboration to Improve Health and Safety in our Neighborhoods*

To strengthen the region's infrastructure to improve the health and safety of Milwaukee residents, especially black males by creating a multi-level and multi-disciplinary data hub assisting in the planning, implementing, and evaluating comprehensive prevention initiatives that reflect the sociopolitical and economic context of Milwaukee and its surrounding areas.

In Participation  
 With...



Milwaukee Police  
 Department



City  
 of  
 Milwaukee

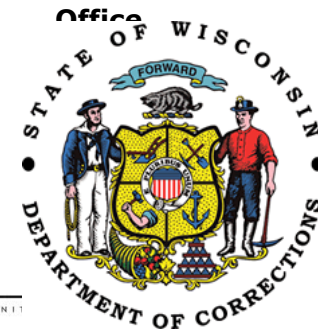


Wisconsin Department of Justice  
 Wisconsin State Public Defenders

JUSTICE POINT



Milwaukee County Court Services  
 Milwaukee County District Attorney's  
 Office



# Activity Record

*Data Informed Collaboration to Improve Health and Safety in our Neighborhoods*

- Vision is a complete picture of an individuals historical activity from all perspectives including but limited to:
  - Offender, Victim, Witness activity
  - Wellness
  - Education Success
  - Program participation
- Basis for aggregate analysis including:
  - Identifying historical activity procession trends
  - Identifying successfulness of interventions

## Features

Restraining Orders	Jail Occupancy
MPD Arrest Data	State Arrest Data
Health Related Data	Record Deduplication/ Matching Algorithm
Visualize Complete Activity Records	MPD Gun Data
MPD Criminal History Data	Emergency Department Data

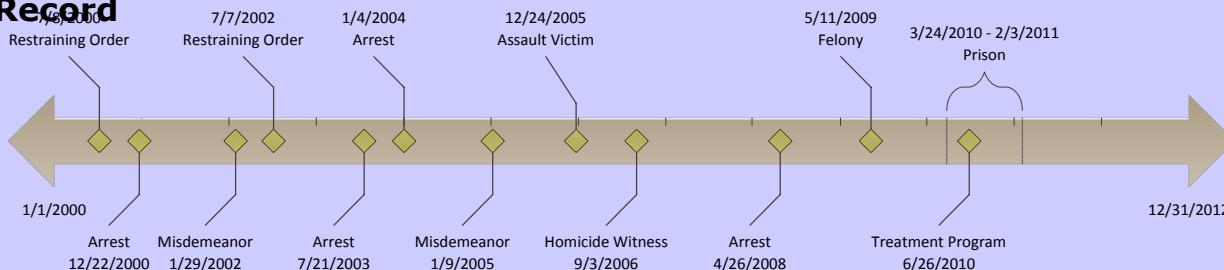
## Source Data

Milwaukee Police Department	Milwaukee County Pretrial
Sojourner Family Peace Center	Protect (Wisconsin DOJ)
Milwaukee Health Department	Health Systems

## Geography

City of Milwaukee	Milwaukee County
State of Wisconsin	

## Sample Individual Activity Record



# Program Effectiveness

*Data Informed Collaboration to Improve Health and Safety in our Neighborhoods*

- Programs include but not limited to:
  - Pretrial Services
  - DPA/Diversion
  - Jailing Cost
  - Health
- Agency program activity is an important element in an individuals Activity Record
- Focus on evaluating the success of programs offered by area agencies
- Information an excellent source to assist agencies baselining program offerings and evaluating program enhancements
- Wealth of hub data provides additional insight possibilities
- The Data Hub Milwaukee is a resource to assist area agencies with developing evaluation methodologies and models

## Features

Pretrial Data

Jail Occupancy

DPA's & Diversions

Health Related Data

MPD Arrest Data

Program Enrollment/  
Completion Data

## Source Data

Milwaukee Police  
Department

Milwaukee County Jail

Protect (Wisconsin DOJ)

Milwaukee Health  
Department

Milwaukee County  
Pretrial Data

Sojourner Family Peace  
Center

## Geography

City of Milwaukee

Milwaukee County

## Current Data Sources

### In the Hub:

Health Department

Milwaukee Police Department

County Pre-Trial

### In the Queue:

Prosecutor

Courts

## Next in the Queue:

Public Schools

PolicyMap- Market Value Assessment

Bureau of Milwaukee Child Welfare

Corrections

eTrace

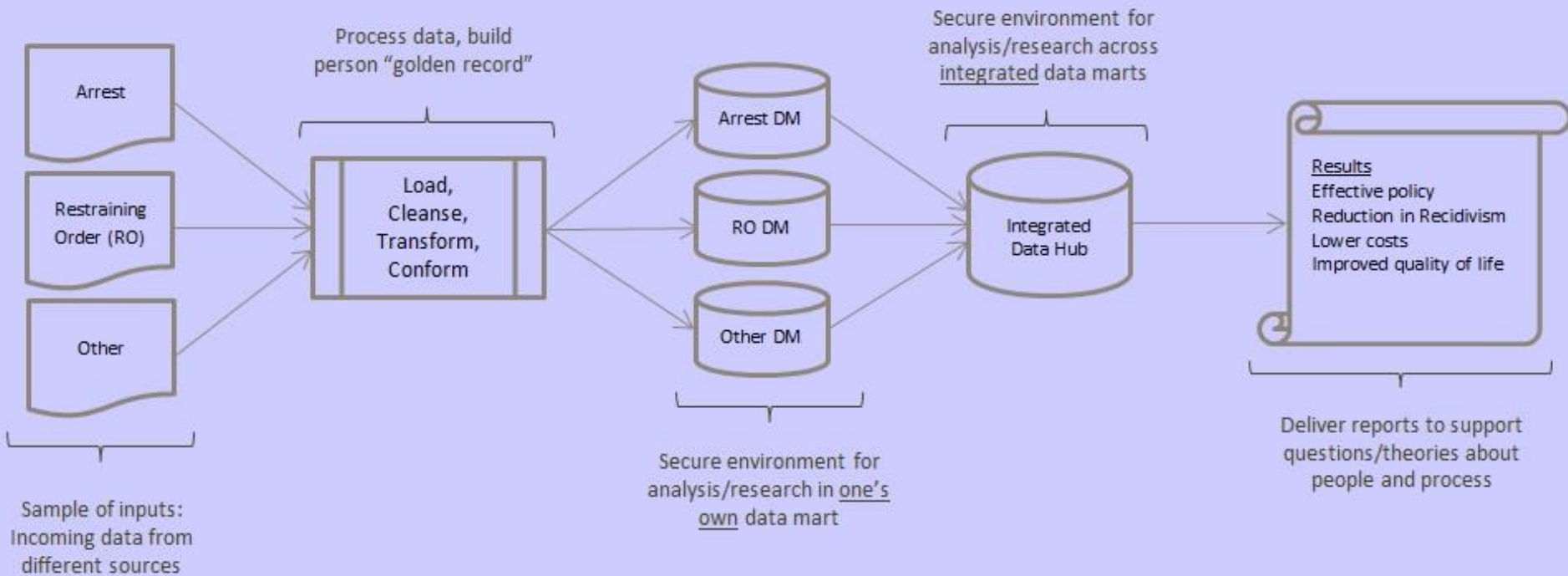
NIBIN

Shot Spotter

# DATA INTEGRATION

# Data Integration

*Data Informed Collaboration to Improve Health and Safety in our Neighborhoods*





# INDIVIDUAL ACTIVITY REPORT

DataMart	Event	EventDateId	Age	Detail
MKE HD	MHD Imms	19960221	0	Vaccine Group: HepB
MKE HD	MHD BirthCert	19960221	0	Length: 20.00 Inches, Weight: 125 Oz, Mothers Age: 30
MKE HD	MHD Imms	19960326	0	Vaccine Group: HepB
MKE HD	MHD Imms	19960813	0	Vaccine Group: HepB
MKE HD	MHD Imms	19960813	0	Vaccine Group: Polio
MKE HD	MHD Imms	19960813	0	Vaccine Group: DTP/aP
MKE HD	MHD LeadLab	19961016	0	Pbb: 9.00
MKE HD	MHD Imms	19961118	0	Vaccine Group: Polio
MKE HD	MHD Imms	19961118	0	Vaccine Group: DTP/aP
MKE HD	MHD LeadLab	19961119	0	Pbb: 10.00
MKE HD	MHD Imms	19970120	0	Vaccine Group: DTP/aP
MKE HD	MHD Imms	19981008	2	Vaccine Group: Polio
MKE HD	MHD Imms	19981008	2	Vaccine Group: DTP/aP
MKE HD	MHD LeadLab	19981010	2	Pbb: 16.00
MKE HD	MHD Imms	19990326	3	Vaccine Group: MMR
MKE HD	MHD LeadLab	19990326	3	Pbb: 12.00
MKE HD	MHD Imms	19991020	3	Vaccine Group: Polio
MKE HD	MHD LeadLab	19991020	3	Pbb: 12.00
MKE HD	MHD Imms	20001130	4	Vaccine Group: DTP/aP
MKE HD	MHD Imms	20001130	4	Vaccine Group: MMR
MKE HD	MHD Imms	20010831	5	Vaccine Group: Varicella
MKE HD	MHD LeadLab	20010831	5	Pbb: 11.00
MKE HD	MHD LeadLab	20021212	6	Pbb: 10.00
MKE HD	MHD Imms	20021212	6	Vaccine Group: HepA
MKE HD	MHD Imms	20081017	12	Vaccine Group: Varicella
MKE HD	MHD Imms	20081017	12	Vaccine Group: Influenza
MKE HD	MHD Imms	20081017	12	Vaccine Group: Td
MKE PD	MPD Incident	20090922	13	INCIDENT: Burglary Residence, INVOLVEMENT: Witness (Without Information)
MKE PD	MPD Arrest	20100626	14	Charges: [1] Assault & Battery
MKE HD	MHD ComDisease	20101025	14	Disease: CHLAMYDIA TRACHOMATIS INFECTION (Group: STD)
MKE HD	MHD Imms	20101126	14	Vaccine Group: Influenza
MKE HD	MHD Imms	20101229	14	Vaccine Group: Influenza
MKE PD	MPD Arrest	20110206	14	Charges: [1] Assault & Battery
MKE PD	MPD Incident	20110206	14	INCIDENT: Disorderly Conduct, INVOLVEMENT: Witness (With Information)
MKE PD	MPD Arrest	20110207	14	Charges: [1] Batt to Sch Dist Ofc
MKE PD	MPD Incident	20110207	14	INCIDENT: Battery Misdemeanor, INVOLVEMENT: Arrestee
MKE HD	MHD Imms	20110321	15	Vaccine Group: Meningo
MKE HD	MHD ComDisease	20110322	15	Disease: GONORRHEA (Group: STD)
MKE HD	MHD ComDisease	20110322	15	Disease: CHLAMYDIA TRACHOMATIS INFECTION (Group: STD)
MKE HD	MHD ComDisease	20110502	15	Disease: CHLAMYDIA TRACHOMATIS INFECTION (Group: STD)
MKE PD	MPD Arrest	20110706	15	Charges: [1] Without Parent or Gu
MKE PD	MPD Incident	20110706	15	INCIDENT: Missing Return, INVOLVEMENT: Missing Return - Juv Taken Into Custody
MKE PD	MPD Incident	20110706	15	INCIDENT: Missing Return, INVOLVEMENT: Missing Person
MKE HD	MHD ComDisease	20110713	15	Disease: CHLAMYDIA TRACHOMATIS INFECTION (Group: STD)
MKE HD	MHD Imms	20110720	15	Vaccine Group: HepA
MKE HD	MHD Imms	20110720	15	Vaccine Group: DTP/aP
MKE PD	MPD Incident	20110808	15	INCIDENT: Missing Report, INVOLVEMENT: Missing Return - Juv Taken Into Custody
MKE PD	MPD Incident	20110808	15	INCIDENT: Missing Report, INVOLVEMENT: Missing Person
MKE PD	MPD Arrest	20110812	15	Charges: [1] Battery
MKE HD	MHD Imms	20110825	15	Vaccine Group: HPV
MKE PD	MPD Incident	20111024	15	INCIDENT: Missing Report, INVOLVEMENT: Missing Person
MKE PD	MPD Incident	20111024	15	INCIDENT: Missing Report, INVOLVEMENT: Missing Return - Juv Taken Into Custody
MKE PD	MPD Arrest	20111227	15	Charges: [1] Escape-Juv Placement, [2] Truancy, [3] Disorderly Conduct
MKE PD	MPD Incident	20120105	15	INCIDENT: Burglary Residence, INVOLVEMENT: Latent Print Comparison/Bofi Use Only
MKE PD	MPD Incident	20120212	15	INCIDENT: Burglary Residence, INVOLVEMENT: Latent Print Comparison/Bofi Use Only
MKE PD	MPD Incident	20120218	15	INCIDENT: Burglary Residence, INVOLVEMENT: Latent Print Comparison/Bofi Use Only

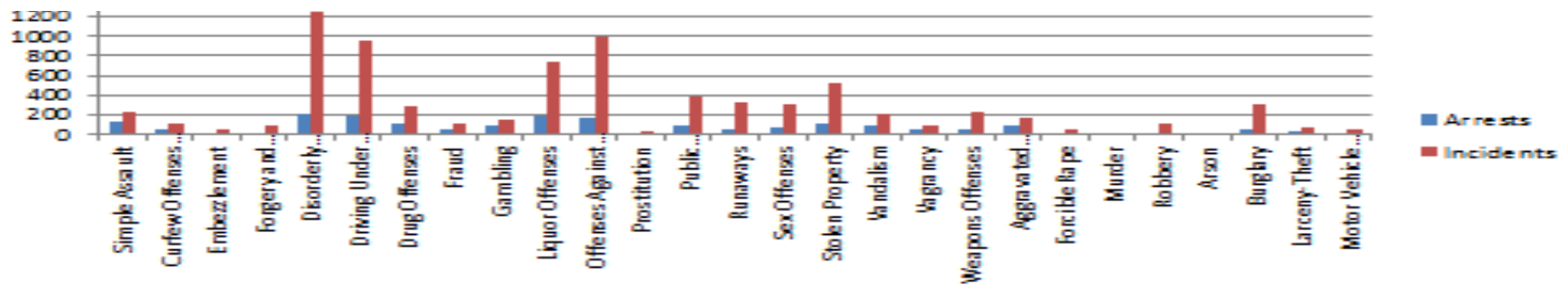
# NEIGHBORHOOD DASHBOARD

**Center For Community Health and Safety  
Location Activity History**

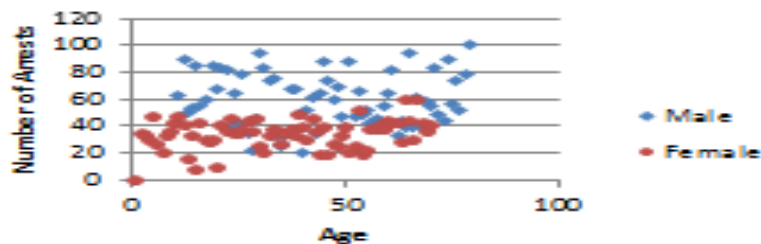
**Location Type:** Aldermanic District    **Location:** 99    **Start Date:** 4/1/2013    **End Date:** 6/30/2013

**Police Activity**

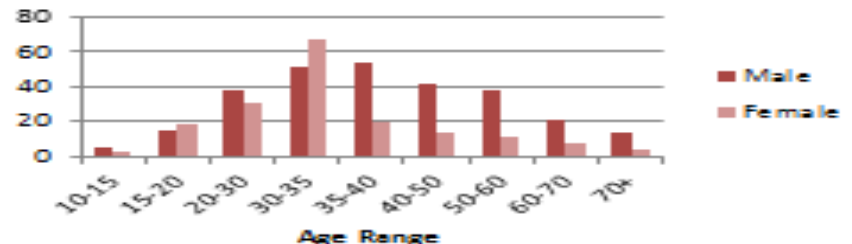
**Arrests and Incidents**



**Arrests By Age**

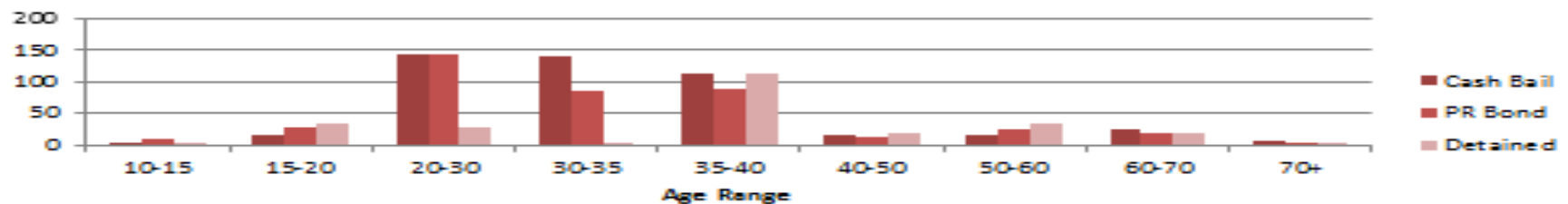


**Prior Arrests By Age**



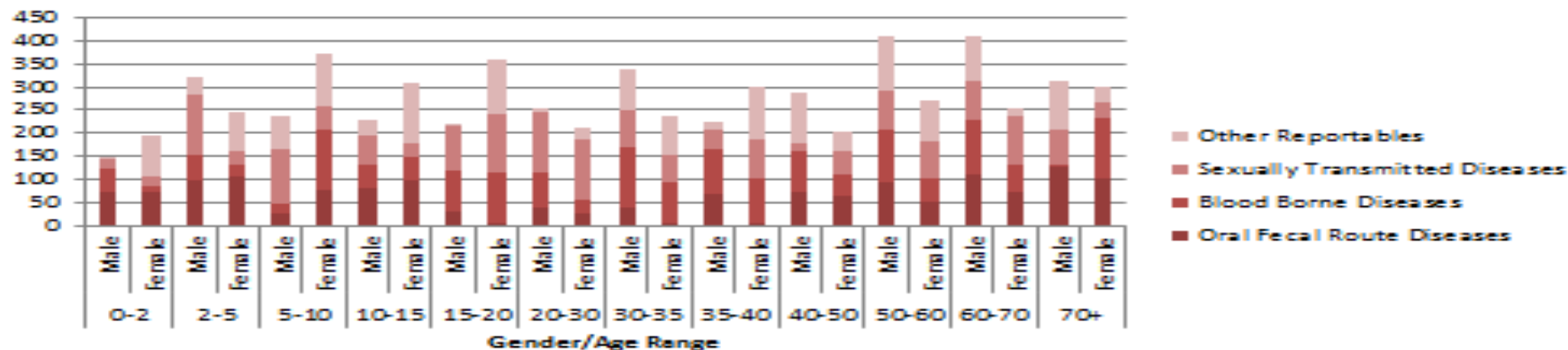
**Court Activity**

**Bond Type**

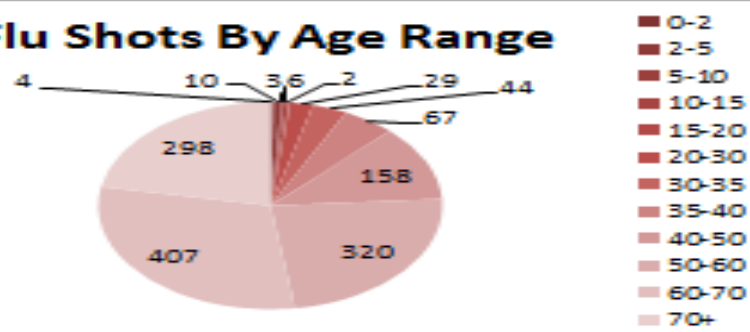


Health Activity

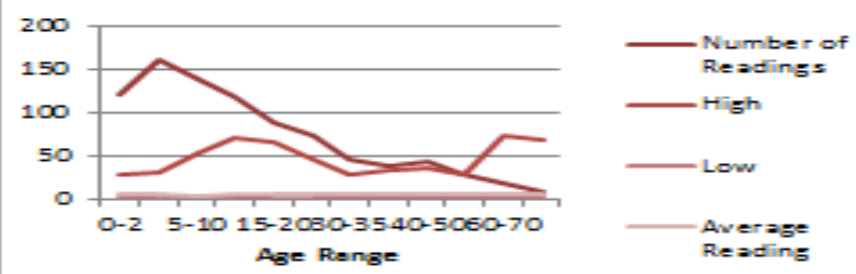
Communicable Diseases



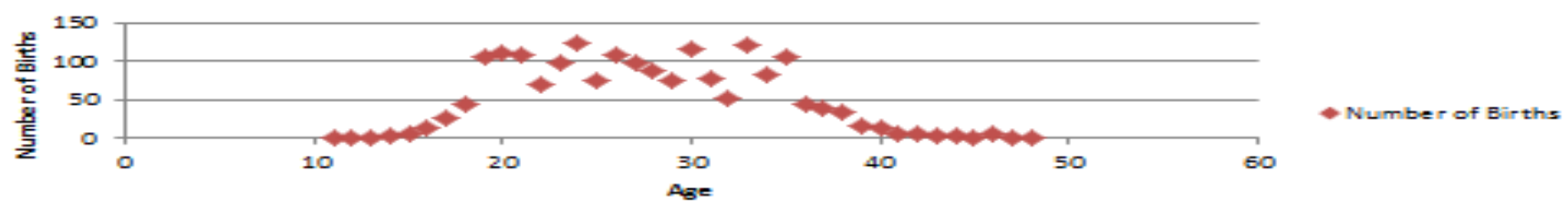
Flu Shots By Age Range



Lead Activity



Births By Mothers Age



# FUNDING ENTITIES

- **The Wisconsin Partnership Program** (University of Wisconsin-Madison, School of Medicine and Public)
  - Reduce homicides and other violent crime/violence in urban areas using interagency collaboration and culturally competent proactive strategies that increase protective factors and decrease risk factors
- **Wisconsin Office of Justice Assistance** (Now WI DOJ)
  - Create a data collection system/repository of criminal justice and partner information to carry out the necessary research and analysis from a merged data set to determine the effectiveness of the Council’s Evidence Based Decision Making Initiative
- **The California Endowment**
  - Using a central repository for real time crime and public health data: Creation and dissemination of a crime and public health data portal for urban jurisdictions