

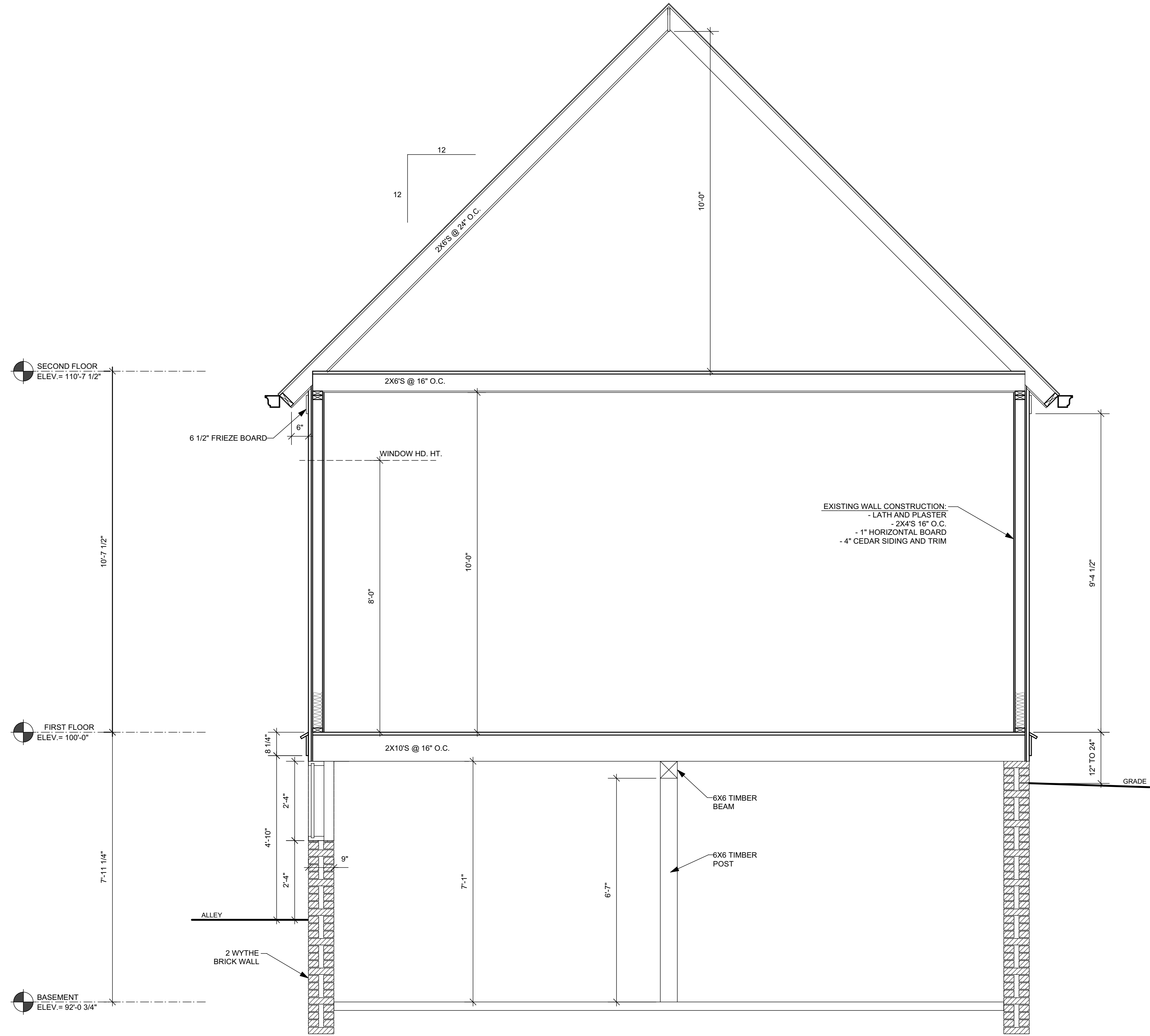


- LEGEND:**
-  = COMBINATION SMOKE AND CARBON MONOXIDE DETECTOR
 -  = SMOKE DETECTOR

GENERAL NOTES:

1. THE ARCHITECT/ENGINEER MAINTAINS NO RESPONSIBILITY FOR THE GENERAL CONTRACTOR, SUBCONTRACTORS, OR THOSE WORKING IN SUCH CAPACITIES, FOR THE MEANS OR METHODS USED, OR LACK THEREOF, IN THE EXECUTION OF THE WORK AND SAFETY PROCEDURES AND PRECAUTIONS TAKEN AT THE PROJECT SITE.
2. ALL CONSTRUCTION SHALL BE PERFORMED IN STRICT CONFORMANCE WITH ALL APPLICABLE STATE AND LOCAL BUILDING CODES.
3. CONTRACTORS SHALL COMPLY WITH THE LATEST (OSHA) OCCUPATIONAL SAFETY AND HEALTH ACT REQUIREMENTS.
4. CONTRACTORS SHALL ASSUME FULL RESPONSIBILITY - UNRELIEVED BY REVIEW OF SHOP DRAWINGS NOR BY SUPERVISION OR PERIODIC OBSERVATION OF CONSTRUCTION FOR COMPLIANCE WITH THE CONTRACT DOCUMENTS - FOR DIMENSIONS TO BE CONFIRMED AND CORRELATED ON THE JOB SITE AND BETWEEN INDIVIDUAL DRAWINGS OR SETS OF DRAWINGS; FOR FABRICATION PROCESSES AND CONSTRUCTION TECHNIQUES (INCLUDING EXCAVATION, SHORING, BRACING, SCAFFOLDING, FORMWORK ERECTION, ETC.); FOR COORDINATION OF THE VARIOUS TRADES; FOR SAFE CONDITIONS ON THE JOB SITE; AND FOR PROTECTION OF THE PEOPLE AND PROPERTY AT THE JOB SITE.
5. VARIATIONS IN FIELD CONDITIONS RELATIVE TO THE CONTRACT DOCUMENTS SHALL BE REPORTED TO THE ARCHITECT/ENGINEER. WORK SHALL NOT PROGRESS UNTIL WRITTEN PERMISSION FROM THE ARCHITECT/ENGINEER IS OBTAINED.
6. THE INFORMATION CONTAINED ON THE DRAWINGS IS IN ITSELF INCOMPLETE, AND VOID UNLESS USED IN CONJUNCTION WITH ALL THE SPECIFICATIONS, TRADE PRACTICES, APPLICABLE STANDARDS, CODES, ETC., INCORPORATED THEREIN BY REFERENCE, OF WHICH THE CONTRACTOR CERTIFIES KNOWLEDGE BY SIGNING THE CONTRACT.
7. UNLESS OTHERWISE NOTED, ALL DETAILS, SECTIONS AND NOTES ON THE DRAWINGS ARE INTENDED TO BE TYPICAL FOR SIMILAR SITUATIONS AND CONDITIONS ELSEWHERE.
8. DRAWINGS ARE NOT TO BE USED FOR SHOP DETAILING OR FOR CONSTRUCTION UNLESS SPECIFICALLY STAMPED BY THE ARCHITECT/ENGINEER ON THE DRAWINGS "FOR DETAILING" OR "FOR CONSTRUCTION". THESE DRAWINGS ARE NOT TO BE REPRODUCED FOR THE PURPOSE OF USING THEM AS SHOP DRAWINGS.
9. ARCHITECT/ENGINEER'S REVIEW OF DRAWINGS PREPARED BY THE CONTRACTORS, SUPPLIERS, ETC., ARE ONLY FOR CONFORMANCE WITH THE DESIGN CONCEPT. CONSTRUCTION SHALL NOT START WITHOUT SAID REVIEW, AND ONLY SHOP DRAWINGS STAMPED BY THE ARCHITECT/ENGINEER WILL BE ALLOWED AT THE JOB SITE.
10. SEE ARCHITECTURAL, STRUCTURAL, MECHANICAL, ELECTRICAL, AND PLUMBING DRAWINGS FOR ADDITIONAL OPENINGS, SLEEVES, EQUIPMENT PADS, DEPRESSIONS, CURBS, INSERTS, FLOOR FINISHES AND OTHER EMBEDDED ITEMS.
11. UNLESS OTHERWISE NOTED OR SHOWN, THE GENERAL CONTRACTOR SHALL BE RESPONSIBLE FOR COORDINATING THE LOCATION AND PLACEMENT OF ANY INSERTS, HANGERS, ANCHOR BOLTS, HOLES OR PIPE SLEEVES THAT ARE REQUIRED BY THE MECHANICAL, ELECTRICAL OR PLUMBING EQUIPMENT.
12. ALL DIMENSIONS ON STRUCTURAL DRAWINGS ARE TO BE CHECKED BY THE CONTRACTORS AGAINST ARCHITECTURAL, MECHANICAL, ELECTRICAL, AND PLUMBING DRAWINGS. CONTRACTORS SHALL BE FULLY RESPONSIBLE FOR CONFIRMING AND CORRELATING ALL DIMENSIONS ON THE JOB SITE AND BETWEEN INDIVIDUAL DRAWINGS AND RESPECTIVE TRADES.
13. FIELD VERIFY ALL EXISTING CONDITIONS TO MATCH NEW INTERIOR FINISHES TO EXISTING INTERIOR FINISHES AS CLOSE AS POSSIBLE.
14. FIELD VERIFY ALL EXISTING EXTERIOR CONDITIONS TO MATCH NEW EXTERIOR FINISHES AND DETAILS AS CLOSE AS POSSIBLE.
15. WINDOW DESIGNATIONS GIVEN ARE FOR GLASS SIZE NOTED IN INCHES (WIDTH X HEIGHT) PER SASH. MATCH WINDOW SIZES AS CLOSELY AS POSSIBLE TO SELECTED WINDOW MANUFACTURER'S STANDARD SIZES.
16. CONTRACTOR SHALL OBTAIN AND VERIFY ROUGH OPENING SIZES FOR ALL WINDOWS AND DOORS FROM MANUFACTURER.
17. FIELD VERIFY ALL EXISTING WINDOWS SHALL MEET THE CODE REQUIREMENT FOR LIGHT (8%) VENTILATION (3.5%) IN ALL HABITABLE ROOMS; MEET EGRESS REQUIREMENTS FOR CLEAR OPENING OF 20" X 24" (EITHER WIDTH X HEIGHT OR HEIGHT X WIDTH).
18. NEW WINDOWS SHALL MEET CODE REQUIREMENTS FOR LIGHT (8%) AND VENTILATION (3.5%) IN ALL HABITABLE ROOMS; MEET EGRESS REQUIREMENTS FOR CLEAR OPENING OF 20" X 24" (EITHER WIDTH X HEIGHT OR HEIGHT X WIDTH).
19. INSTALL SMOKE ALARMS, INTERCONNECTED AND DIRECTLY WIRED TO THE DWELLING'S ELECTRICAL SERVICE WITH A BACK-UP BATTERY SUPPLY.
20. INSTALL COMBINATION SMOKE ALARM/CARBON MONOXIDE ALARM, INTERCONNECTED AND DIRECTLY WIRED TO THE DWELLING'S ELECTRICAL SERVICE WITH A BACK-UP BATTERY SUPPLY.
21. EXISTING EXTERIOR WALLS ARE BALLOON FRAMED; INSTALL FIRE BLOCKING IN EXTERIOR WALLS AS REQUIRED BY CODE.



1 EXISTING BUILDING SECTION
SCALE: 1/2" = 1'-0"

HPC SET 2/4/2020

Koz+i-tec-ture™
It's not simply Architecture, it's Koz+i-tec-ture

David J. Koscielniak AIA ALA
12310 West Waterford Avenue
Greenfield, Wisconsin 53228

Cell: (414) 303-8489
koz@kozitecture.com
www.kozitecture.com

OWNERSHIP OF DOCUMENTS
This document, and the ideas and design incorporated herein as an instrument of professional service, is the sole property of Koz+i-tec-ture and is not to be used in whole or in part for any other project or purpose without the expressed written authorization of Koz+i-tec-ture.

ADDITION and INTERIOR ALTERATIONS TO THE EXISTING SINGLE-FAMILY RESIDENCE

217 W RESERVOIR AVENUE
MILWAUKEE, WI 53212

Project

Sheet Title
GENERAL NOTES & EXISTING BUILDING SECTION

Revisions

Date:	2/4/2020
Job NO.:	19-170
Sheet No.	

A3.1