

NE 2-7-21  
ATL. P. 228

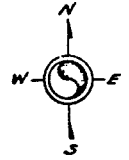
228

1 IN. = 80 FT.

ASSESSMENT SUBD. NO. 70

W. HAMPTON AVE.  
4821 4818 4801

228-23



NOTE: E 1' OF W 157' OF N 127.25 LOT 4  
OWNED BY CARL J. HANCOCK AS OF 7-1-1963  
TRUSTEE'S DEED 1092113 REC. 4-20-1925

ST.

157' 4" TO C.L.

4780

4762

4758

4749

4744

4734-36

4728-30

4722-24

4718

4716

4708

4702

4694

4678

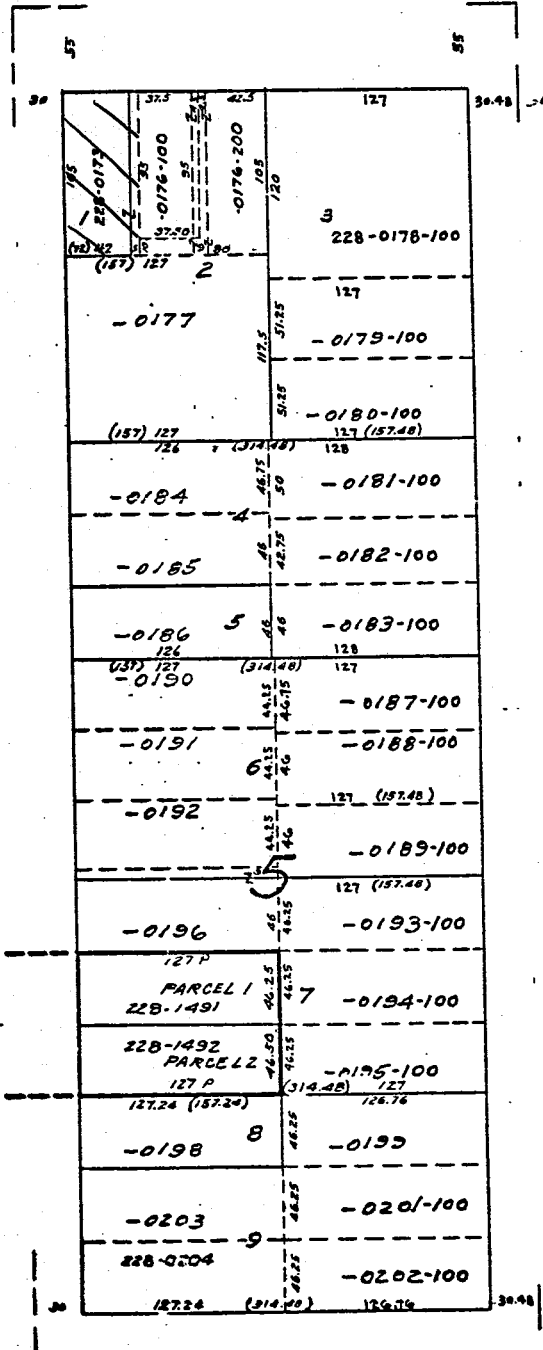
CERT. SUR.

MAP NO.

1812

N. 49TH

MICROFILMED 3-25-81



ST.

4771

4765

157' 6" TO C.L.

4753

4745-31

4745

4731

4731

4723

4719

4711

4705

4697

4691

4675

N. 48TH

CONT'D.