

PETITION FOR A SPECIAL PRIVILEGE

SP 2143

\$208.00 Publication Fee
Must Accompany This Petition
SUBMIT PETITION IN DUPLICATE

September 28, 20 04

To the Honorable, The Common Council of the City of Milwaukee:

Council Members:

GET IT OFF MY PLATE, LLC

The undersigned

WISCONSIN LLC

(State whether petitioner is an individual, co-partnership, Wisconsin or foreign corporation)

being the owners of the following described real estate:

See Attached Exhibit A

(Legal description)

in the 14th Aldermanic District also known by street and number as 2459 S Kinnickinnic & 509 E Smith St (07) City of Milwaukee according to the provisions of Section 66.045 of the Wisconsin Statutes, that the following privilege be granted:

PLACEMENT OF PRIVATELY-OWNED FIBEROPTIC AND COPPER CABLES WITHIN CITY OF MILWAUKEE PUBLIC RIGHT OF WAY ALONG ROUTES DETAILED IN ATTACHED DRAWINGS. FOR THE PURPOSE OF CONNECTING 2 BUILDINGS. DETAILED DRAWINGS HAVE BEEN PROVIDED TO PLANNING - PER RON SWEET REINSTRUCT.

of which a plan or sketch is herewith submitted. Petitioner agrees to comply with all laws and all ordinances of the City of Milwaukee, to abide by any order or resolution of the Common Council affecting this privilege, to be primarily liable for damages to person or property by reason of the granting of such privilege, to furnish a bond and pay annual compensation as provided by law in the sum to be fixed by the proper city officers, and to file and keep current throughout the existence of the privilege, a certificate of insurance indicating applicant holds a public liability policy in at least the sums of \$25,000.00/\$50,000.00 bodily injury, and \$10,000.00 property damage, insuring the city against any liability that might arise by reason of the privilege.

Petitioner further agrees to remove said privilege whenever public necessity so requires when so ordered upon resolution adopted by the Common Council or other legislative body.

Should this special privilege be discontinued for any reason whatsoever, petitioner agrees to remove all construction work executed pursuant to this special privilege, to restore to its former condition and to the approval of the Commissioner of Public Works, any curb, pavement, or other public improvement which was removed, changed or disturbed by reason of the granting of this special privilege. Petitioner further agrees not to contest the validity of Section 66.045 of the Wisconsin Statutes, or the legality of this special privilege in any way.

FILE WITH CITY CLERK LICENSE DIVISION
ROOM 105 CITY HALL, 200 EAST WELLS STREET

Signed R.A. Zehetner
Address 549 E Wilson St 53207

Get it off My Plate LLC
(If firm, society or corporation, give us full name)
549 E Wilson St Milwaukee WI 53207
Address
President
(Title or office held in same) 920-826-2050
(Local Phone Number of Engineer/Contractor)

EXHIBIT A

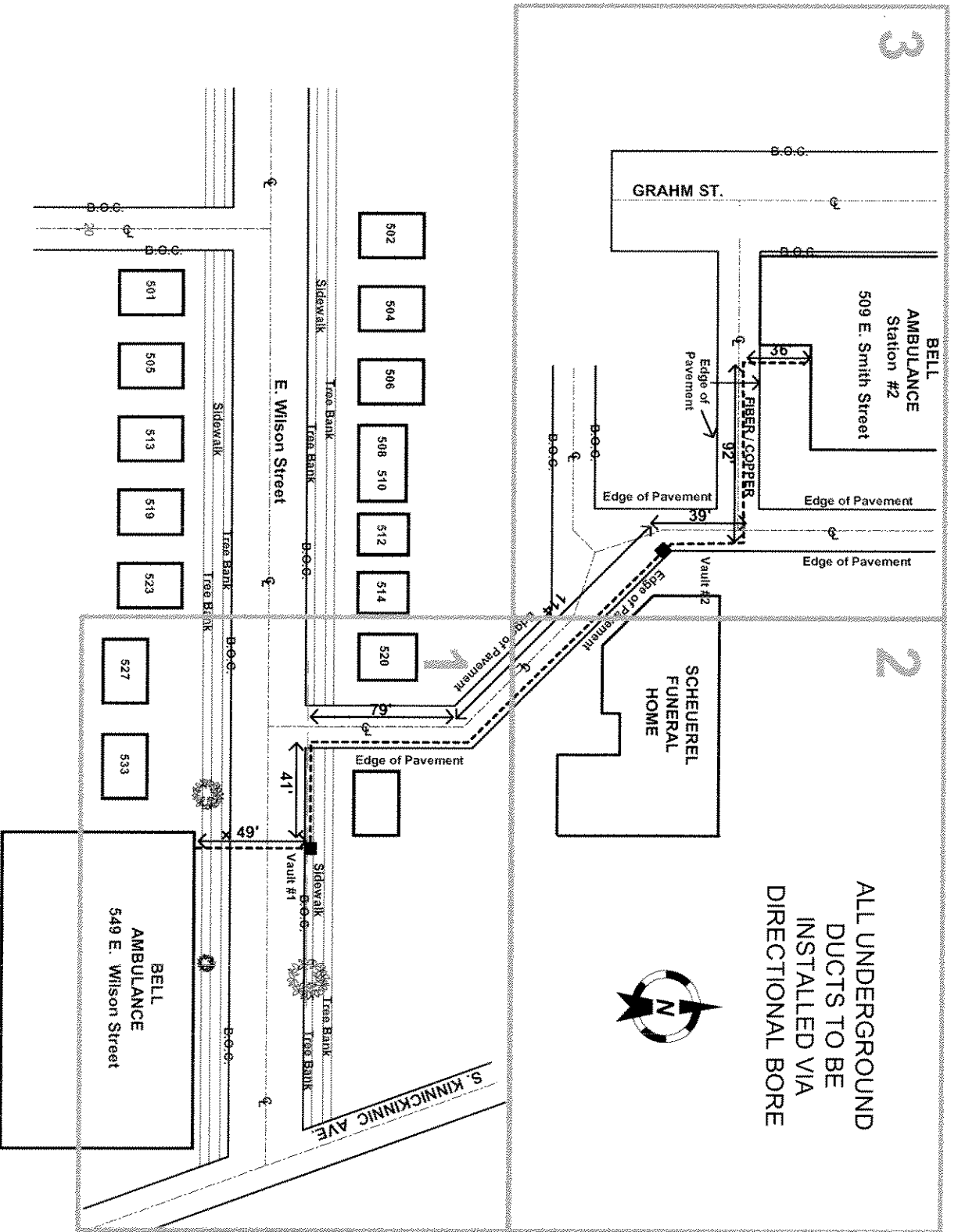
A. Legal Description of 2459 South Kinnickinnic Avenue

That part of the East 1/2 of the Northwest 1/4 of Section 9, in Township 6 North, Range 22 East, in the City of Milwaukee, County of Milwaukee, State of Wisconsin, bounded and described as follows: commencing at a point where the South line of East Wilson Street Intersects the West line of South Kinnickinnic Avenue; thence South 88 Deg. 50' West Along the South Line of East Wilson Street 149.11 Feet to a point 270' East of the East line of S. Graham St.; thence S. on a line and parallel to the E. Line of S. Graham St. 50 ft. to a point; thence N. 88 Deg. 50' East on a line parallel to the S. line of E. Wilson St. 180.56 Ft. to the W. line of S. Kinnickinnic Ave.; thence N. 32' 30' W. along the W. line of S. Kinnickinnic Ave. 58.52 ft to the point of commencement.

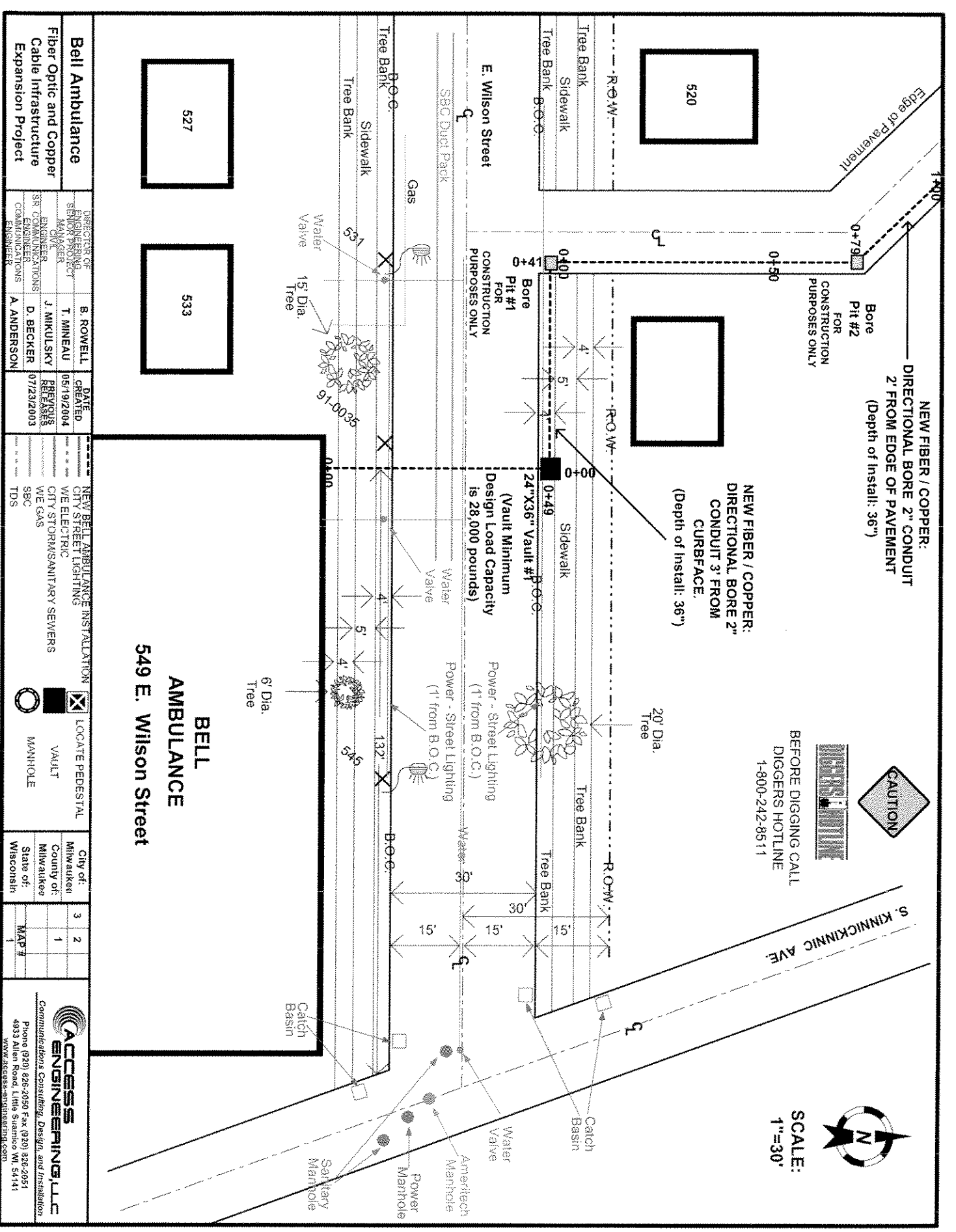
B. Legal Description of 509 East Smith Street

The West 90 feet of Lots 7, 8 and 9 and the North 21 feet of the West 90 feet of Lot 10, and the East 30 feet of the North 16.5 feet of the South 25.5 feet of Lot 10, all in Block 3, in Uriel B. Smith's Subdivision, in the North West 1/4 of Section 9, Township 6 North, Range 22 East, together with an easement along, across and upon the North 4 feet of the South 9 feet of Lot 10, in Block 3 in said Uriel B. Smith's Subdivision, in the City of Milwaukee, County of Milwaukee and State of Wisconsin.

ALL UNDERGROUND
DUCTS TO BE
INSTALLED VIA
DIRECTIONAL BORE



Bell Ambulance		DIRECTOR OF ENGINEERING SENIOR PROJECT MANAGER		DATE CREATED 05/19/2004		NEW BELL AMBULANCE INSTALLATION CITY STREET LIGHTING		LOCATE PEDESTAL		City of: Milwaukee		Map #		 Communications Consulting, Design, and Installation Phone (920) 826-2080 Fax (920) 826-2051 4933 Allen Road, Little Shumco WI, 54141 www.access-engineering.com	
Fiber Optic and Copper Cable Infrastructure Expansion Project		ENGINEER		PREVIOUS RELEASES 07/23/2003		CITY STORM/SANITARY SEWERS WE GAS		VAULT		County of: Milwaukee		OVERVIEW			
		SR. ENGINEER COMMUNICATIONS ENGINEER						MANHOLE		State of: Wisconsin					
		B. ROWELL													
		T. MINEAU													
		J. MIKULSKY													
		D. BECKER													
		A. ANDERSON													



**NEW FIBER / COPPER:
DIRECTIONAL BORE 2" CONDUIT
2' FROM EDGE OF PAVEMENT
(Depth of Install: 36")**

**NEW FIBER / COPPER:
DIRECTIONAL BORE 2" CONDUIT 3' FROM CURBFACE.
(Depth of Install: 36")**



BEFORE DIGGING CALL
DIGGERS HOTLINE
1-800-242-8511



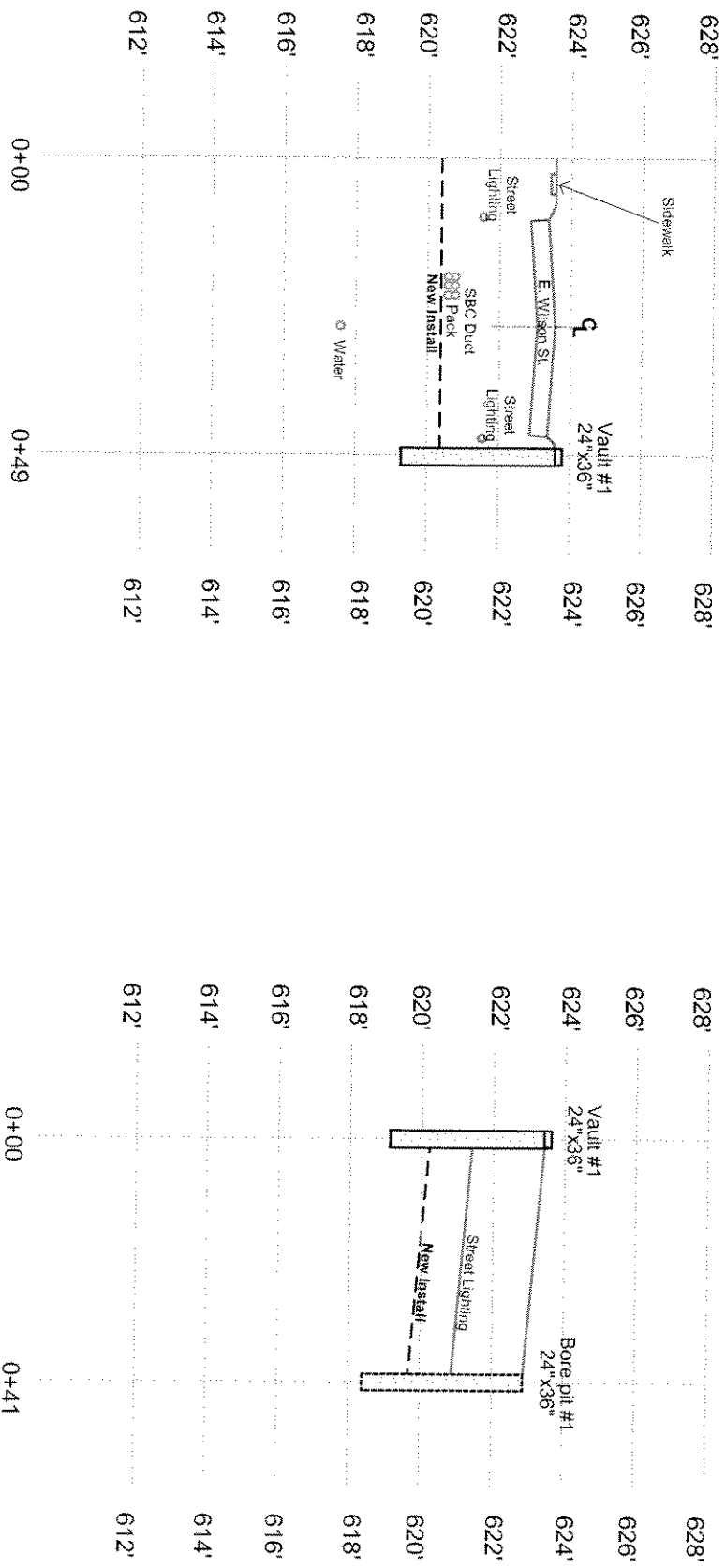
SCALE:
1"=30'

**BELL
AMBULANCE
549 E. Wilson Street**

Bell Ambulance Fiber Optic and Copper Cable Infrastructure Expansion Project	DIRECTOR OF ENGINEERING SENIOR PROJECT MANAGER A. ANDERSON	B. ROWELL T. MINEAU J. MIKULSKY D. BECKER A. ANDERSON	DATE CREATED 05/19/2004 PREVIOUS REVISES 07/23/2003	NEW BELL AMBULANCE INSTALLATION CITY STREET LIGHTING WE ELECTRIC CITY STORM/SANITARY SEWERS WE GAS SBC TDS	LOCATE PEDESTAL VAULT MANHOLE	City of Milwaukee County of Milwaukee State of Wisconsin	3 2 1 MAP 7	ACCESS ENGINEERING LLC Communications Consulting, Design, and Installation Phone (920) 826-2050 Fax (920) 826-2051 4933 Allen Road, Little Station, WI 54141 www.access-engineering.com
	ENGINEERS SR COMMUNICATIONS ENGINEERS	J. MIKULSKY D. BECKER A. ANDERSON	07/23/2003	WE ELECTRIC CITY STORM/SANITARY SEWERS WE GAS SBC TDS	VAULT MANHOLE	City of Milwaukee County of Milwaukee State of Wisconsin	3 2 1 MAP 7	ACCESS ENGINEERING LLC Communications Consulting, Design, and Installation Phone (920) 826-2050 Fax (920) 826-2051 4933 Allen Road, Little Station, WI 54141 www.access-engineering.com

Print 1: Profile from Bell Ambulance Building on Wilson Street North Across E. Wilson Street to Vault #1

Print 1: Profile from Vault #1 West on E. Wilson Street to Bore Pit #1



NOTE: Actual existing utility placement may vary significantly from the shown drawing. Please call Diggers Hotline to verify actual placement and pot-hole to verify depths.

SCALE:
Vertical 1"=5'
Horizontal 1"=30'

Street Lighting	2 feet
Gas	3 feet
Communications	3 feet
New Install	3 feet
WE Power	3.5 feet
Storm Sewer	4 feet
Vault Depth	4.5 feet
Water	6 feet
Sanitary	8 feet

NOTE: Profile shows typical engineered placement depths for the identified utility. Depths may vary significantly from the profile drawing shown. Please call Diggers Hotline to verify actual placement and pot-hole to verify depths.

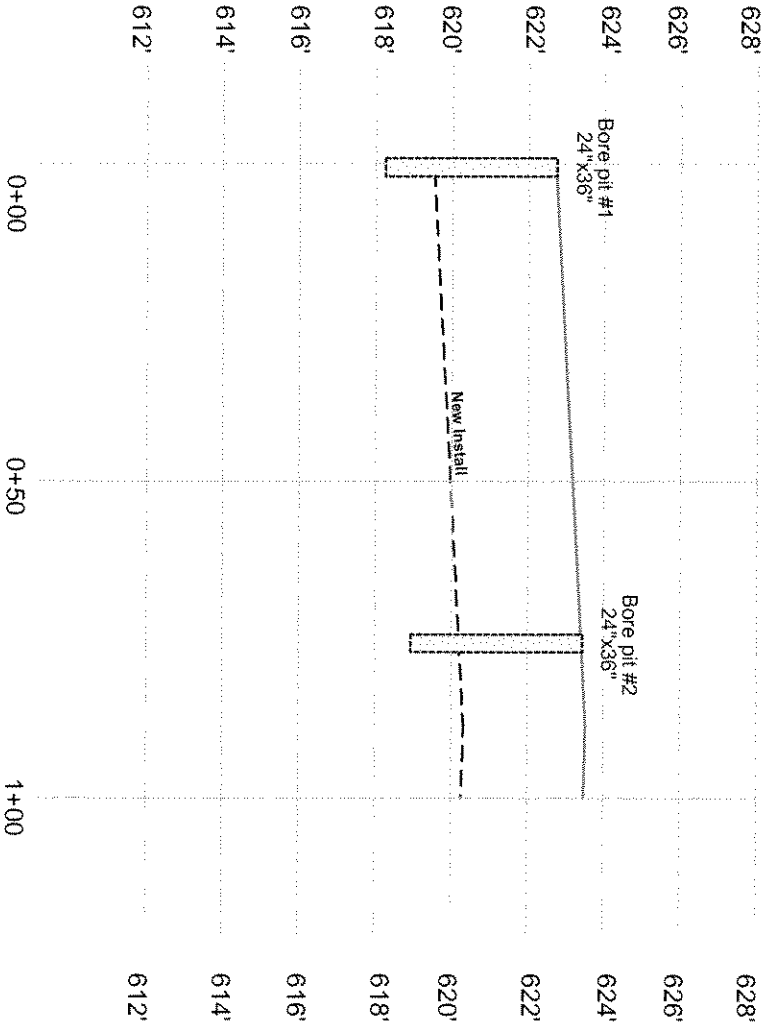


BEFORE DIGGING CALL DIGGERS HOTLINE 1-800-242-8511

Bell Ambulance		NEW BELL AMBULANCE INSTALLATION	
Fiber Optic and Copper Cable Infrastructure Expansion Project	DIRECTOR OF ENGINEERING M. ROYER	CITY STREET LIGHTING WE ELECTRIC	LOCATE PEDESTAL
	ENGINEER J. MIKULSKY	CITY STORM/SANITARY SEWERS WE GAS	VAULT
	SIR COMMUNICATIONS ENGINEER D. BECKER	TDS	MANHOLE
	ENGINEER A. ANDERSON		
	DATE CREATED 05/19/2004	CITY OF MILWAUKEE	CITY OF MILWAUKEE
	REVISED 07/23/2003	STATE OF WISCONSIN	STATE OF WISCONSIN
		MAP # 1-P-0711A	

ACCESS ENGINEERING, LLC
 Communications Consulting, Design, and Installation
 Phone (920) 826-2850 Fax (920) 826-2051
 4933 Allen Road, Little Staircase WI, 54141
 WWW.ACCESS-ENGINEERING.COM

Print 1: Profile from Bore Pit # 1
North in Alley Way



BEFORE DIGGING CALL
DIGGERS HOTLINE
1-800-242-8511

NOTE: Actual existing utility placement may vary significantly from the shown drawing. Please call Diggers Hotline to verify actual placement and pothole to verify depths.

SCALE:
Vertical 1"=5'
Horizontal 1"=30'

Utility Type	Typical Depth (feet)
Street Lighting	2 feet
Gas	3 feet
Communications	3 feet
New Install	3 feet
WE Power	3.5 feet
Storm Sewer	4 feet
Vault Depth	4.5 feet
Water	6 feet
Sanitary	8 feet

NOTE: Profile shows typical engineered placement depths for the identified utility. Depths may vary significantly from the profile drawing shown. Please call Diggers Hotline to verify actual placement and pothole to verify depths.



Bell Ambulance		DIRECTOR OF PROJECT	B. ROWELL	DATE CREATED	05/19/2004	NEW BELL AMBULANCE INSTALLATION		<input checked="" type="checkbox"/>	LOCATE PEDESTAL	City of Milwaukee	3	2	<p>ACCESS ENGINEERING, LLC Communications Consulting, Design, and Installation Phone (920) 826-2050 Fax (920) 826-2051 4933 Allen Road, Little Saunco WI, 54141 www.access-engineering.com</p>
Fiber Optic and Copper Cable Infrastructure Expansion Project		SENIOR PROJECT MANAGER	T. MINEAU	PREVIOUS RELEASES	07/23/2003	CITY STREET LIGHTING		<input type="checkbox"/>	VAULT	County of Milwaukee	1	1	
		ENGINEER	J. MIKULSKY	ENGINEER	D. BECKER	CITY STORM/SANITARY SEWERS		<input type="checkbox"/>	MMHOLE	State of Wisconsin	1-P	Profile B	



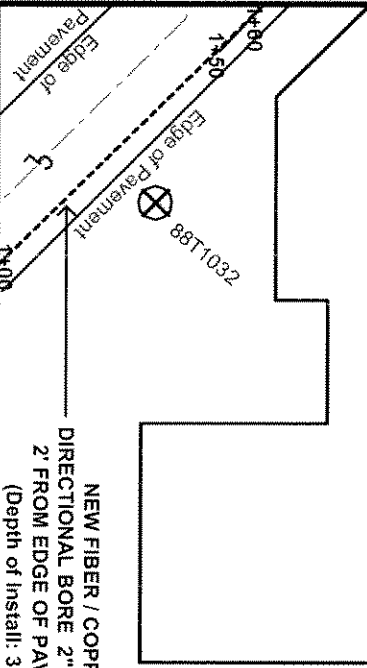
BEFORE DIGGING CALL
DIGGERS HOTLINE
1-800-242-8511

NOTE: Actual existing utility placement may vary significantly from the shown drawing. Please call Diggers Hotline to verify actual placement and pothole to verify depths.



SCALE:
1"=30'

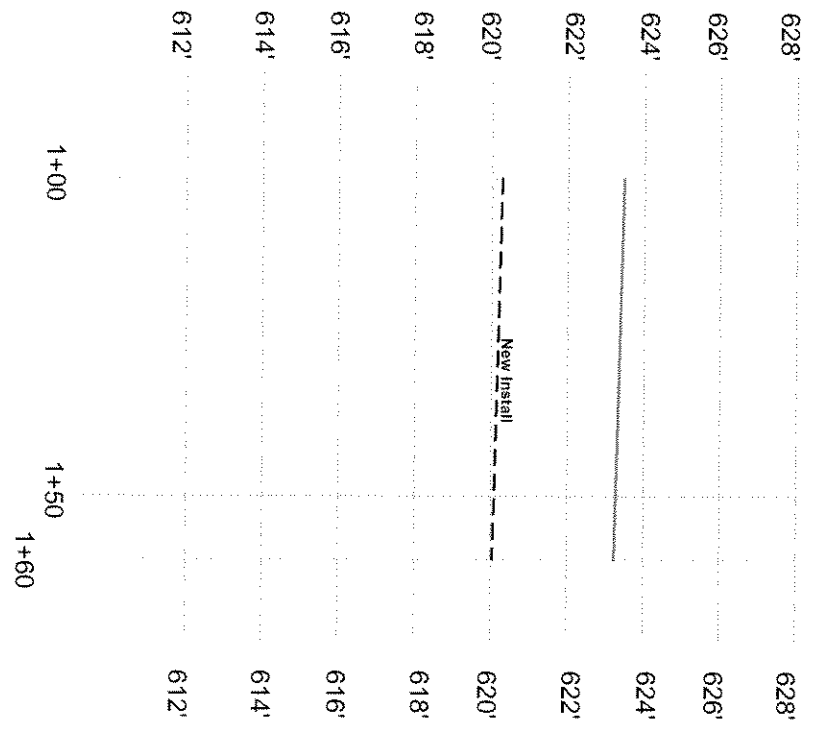
SCHUEEREL
FUNERAL
HOME



NEW FIBER / COPPER:
DIRECTIONAL BORE 2" CONDUIT
2' FROM EDGE OF PAVEMENT
(Depth of install: 36")

Bell Ambulance Fiber Optic and Copper Cable Infrastructure Expansion Project	DIRECTOR OF ENGINEERING SERVING PROJECT	B. ROWELL	DATE CREATED	05/19/2004	PREVIOUS RELEASES	07/23/2003	NEW BELL AMBULANCE INSTALLATION	LOCATE PEDESTAL	City of: Milwaukee	County of: Milwaukee	State of: Wisconsin	MAP #	 Communications Consulting, Design, and Installation Phone (920) 826-2050 Fax (920) 826-2051 4933 Allen Road, Little Shannock WI 54141 www.access-engineering.com
	ENGINEER SR COMMUNICATIONS ENGINEERS	J. MIKULSKY D. BECKER A. ANDERSON	05/19/2004	07/23/2003	CITY STREET LIGHTING CITY STORM/SANITARY SEWERS WE GAS SBC TDS	VAULT MANHOLE	3 2 1 2						

Print 2: Profile from Print 1 North East
in Alley Way



NOTE: Actual existing utility placement may vary significantly from the shown drawing. Please call Diggers Hotline to verify actual placement and potthole to verify depths.

SCALE:
Vertical 1"=5'
Horizontal 1"=30'

Street Lighting	2 feet
Gas	3 feet
Communications	3 feet
New Install	3 feet
WE Power	3.5 feet
Storm Sewer	4 feet
Vault Depth	4.5 feet
Water	6 feet
Sanitary	8 feet

NOTE: Profile shows typical engineered placement depths for the identified utility. Depths may vary significantly from the profile drawing shown. Please call Diggers Hotline to verify actual placement and potthole to verify depths.

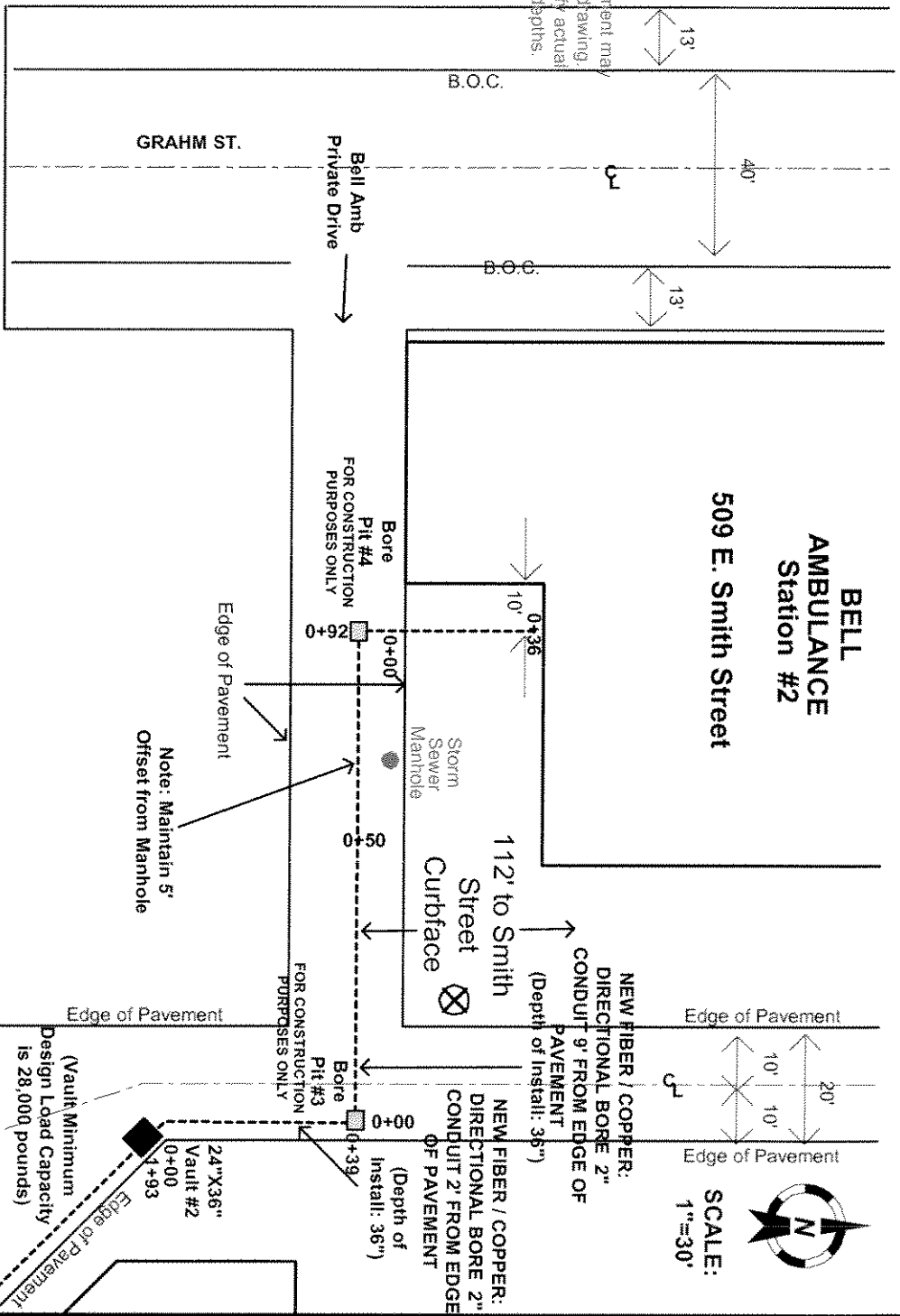


Bell Ambulance		DIRECTOR OF ENGINEERING	B. ROWELL	DATE CREATED	05/19/2004	NEW BELL AMBULANCE INSTALLATION		<input checked="" type="checkbox"/> LOCATE PEDESTAL	City of: Milwaukee	MAP #	<p>ACCESS ENGINEERING LLC Communications Consulting, Design, and Installation Phone (920) 326-2050 Fax (920) 876-2051 4033 Allen Road, Little Sausage, WI, 54141 www.access-engineering.com</p>
Fiber Optic and Copper Cable Infrastructure Expansion Project		ENGINEER	T. MINEAU	PREVIOUS RELEASES	07/23/2003	CITY STREET LIGHTING	<input type="checkbox"/> VAULT	County of: Milwaukee	3	2	
		ENGINEER	J. MIKULSKY	PREVIOUS RELEASES		CITY STORM/SANITARY SEWERS	<input type="checkbox"/> MANHOLE	State of: Wisconsin	1	1	
		ENGINEER	D. BECKER	PREVIOUS RELEASES		SBC					
		ENGINEER	A. ANDERSON	PREVIOUS RELEASES		TDS					



BEFORE DIGGING CALL
DIGGER'S HOTLINE
1-800-242-8511

NOTE: Actual existing utility placement may vary significantly from the shown drawing. Please call Diggers Hotline to verify actual placement and pothole to verify depths.



**BELL
AMBULANCE
Station #2**

509 E. Smith Street

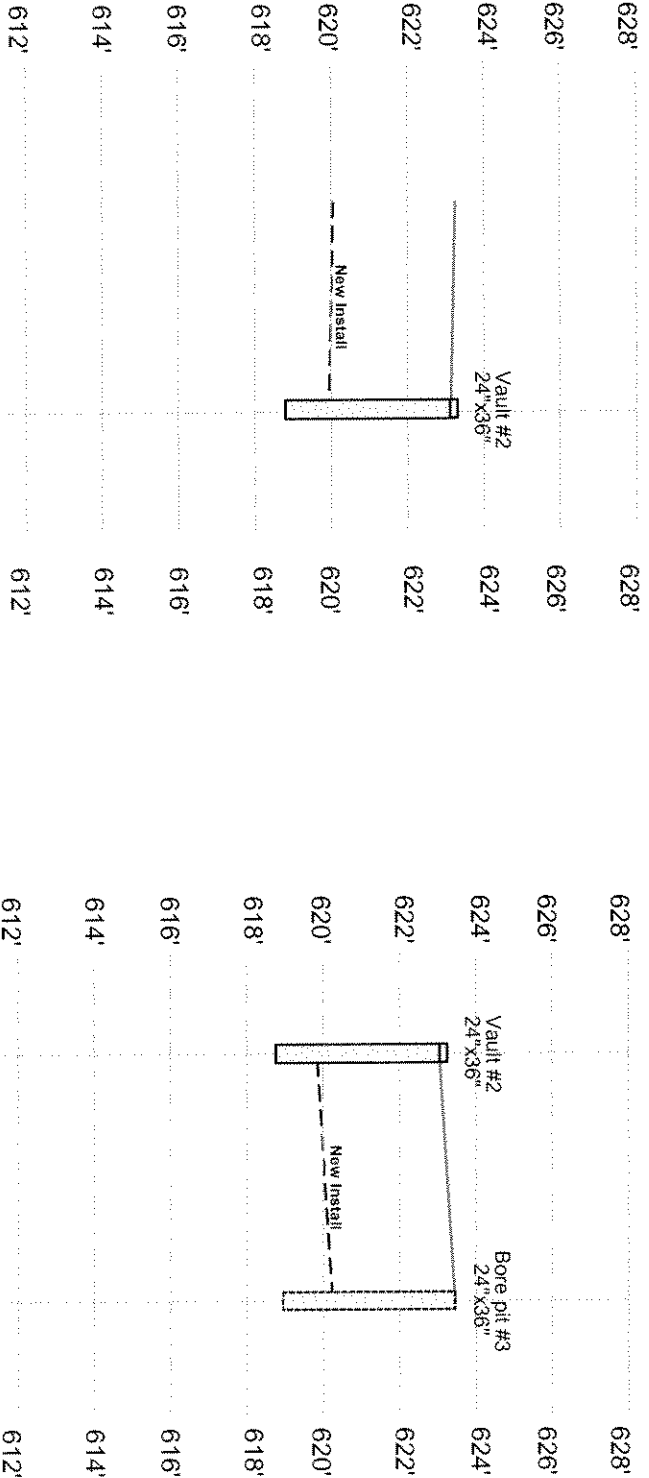
SCALE:
1"=30'



Bell Ambulance Fiber Optic and Copper Cable Infrastructure Expansion Project	DIRECTOR OF PROJECT	B. ROWELL	DATE CREATED	05/19/2004	NEW BELL AMBULANCE INSTALLATION CITY STREET LIGHTING WE ELECTRIC CITY STORM/SANITARY SEWERS WE GAS	LOCATE PEDESTAL VAULT MANHOLE	City of:	Milwaukee	3	2	 Communications Consulting, Design, and Installation Phone (920) 826-2050 Fax (920) 826-2051 4933 Allen Road, Little Shamburg WI, 54141 www.access-engineering.com
	SENIOR PROJECT ENGINEER	T. MINEAU	PREVIOUS RELEASES	07/23/2003			County of:	Milwaukee	3	1	
	ENGINEER	J. MIKULSKY			State of:	Wisconsin	3	1			
	COMMUNICATIONS ENGINEER	D. BECKER									
	ENGINEER	A. ANDERSON									

Print 3: Profile from Print North East in
Alley Way to Vault #2

Print 3: Profile from Vault #2 North in
Alley Way to Bore Pit #3



NOTE: Actual existing utility placement may vary significantly from the shown drawing. Please call Diggers Hotline to verify actual placement and pothole to verify depths.

SCALE:
Vertical 1"=5'
Horizontal 1"=30'

Street Lighting	2 feet
Gas	3 feet
Communications	3 feet
New Install	3 feet
WE Power	3.5 feet
Storm Sewer	4 feet
Vault Depth	4.5 feet
Water	6 feet
Sanitary	8 feet

NOTE: Profile shows typical engineered placement depths for the identified utility. Depths may vary significantly from the profile drawing shown. Please call Diggers Hotline to verify actual placement and pothole to verify depths.

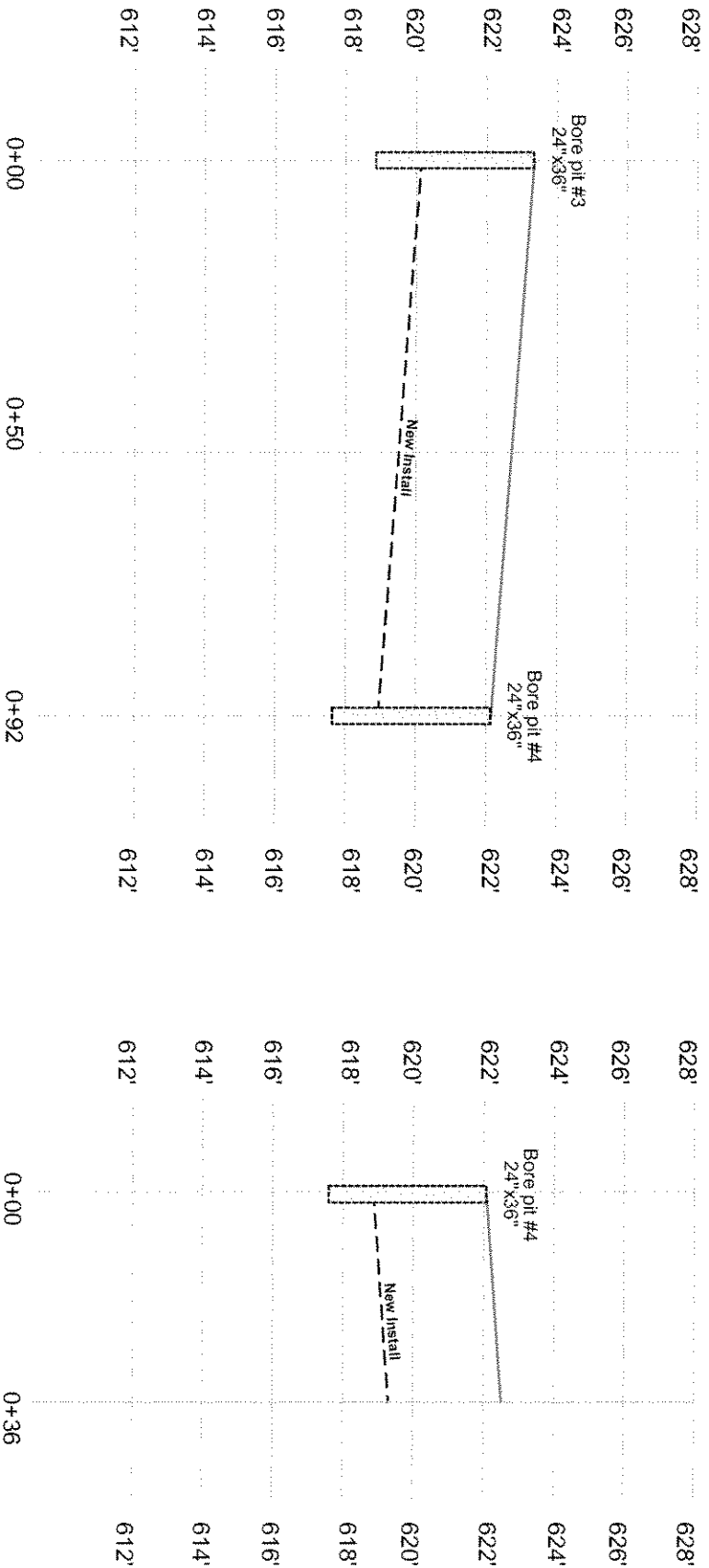


BEFORE DIGGING CALL
DIGGERS HOTLINE
1-800-242-8511

Bell Ambulance	DIRECTOR OF ENGINEERING SENIOR PROJECT MANAGER T. MINEAU	B. ROWELL T. MINEAU	DATE CREATED 09/19/2004	NEW BELL AMBULANCE INSTALLATION CITY STREET LIGHTING WE ELECTRIC CITY STORM/SANITARY SEWERS	<input checked="" type="checkbox"/> LOCATE PEDESTAL <input type="checkbox"/> VAULT	City of: Milwaukee County of: Milwaukee State of: Wisconsin	MAP # 3-ProfileA	 Communications Consulting, Design, and Installation Phone (920) 826-2050 Fax (920) 826-2051 4933 Allen Road, Little Sausage WI, 54141 WWW.ACCESS-ENGINEERING.COM
Fiber Optic and Copper Expansion Project	ENGINEER COMMUNICATIONS ENGINEER A. ANDERSON	D. BECKER	REVISIONS 07/23/2003	WE GAS SBC TDS	MANHOLE			

Print 3: Profile from Bore Pit #3 West in Alley Way to Bore Pit #4

Print 3: Profile from Bore Pit #4 North to Bell Ambulance Building on Smith Street



NOTE: Actual existing utility placement may vary significantly from the shown drawing. Please call Diggers Hotline to verify actual placement and pothole to verify depths.

SCALE:
Vertical 1"=5'
Horizontal 1"=30'

Street Lighting	2 feet
Gas	3 feet
Communications	3 feet
New Install	3 feet
WE Power	3.5 feet
Storm Sewer	4 feet
Vault Depth	4.5 feet
Water	6 feet
Sanitary	8 feet

NOTE: Profile shows typical engineered placement depths for the identified utility. Depths may vary significantly from the profile drawing shown. Please call Diggers Hotline to verify actual placement and pothole to verify depths.



Bell Ambulance		DIRECTOR OF ENGINEERING SENIOR PROJECT MANAGER		B. ROWELL		T. MINEAU		DATE CREATED 05/19/2004		NEW BELL AMBULANCE INSTALLATION	
Fiber Optic and Copper Cable Infrastructure Expansion Project		ENGINEER		J. MIKULSKY		D. BECKER		REVISED 07/23/2003		CITY STREET LIGHTING WE ELECTRIC	
		ENGINEER		A. ANDERSON						CITY STORM/SANITARY SEWERS WE GAS SBC TDS	
										<input checked="" type="checkbox"/> LOCATE PEDESTAL <input type="checkbox"/> VAULT <input type="checkbox"/> MANHOLE	
		City of Milwaukee		County of Milwaukee		State of Wisconsin		MAP # 3-Profile B		ACCESS ENGINEERING, LLC Communications Consulting, Design, and Installation Phone (920) 826-2050 Fax (920) 826-2051 4933 Allen Road, Little Shannock WI 54141 www.access-engineering.com	