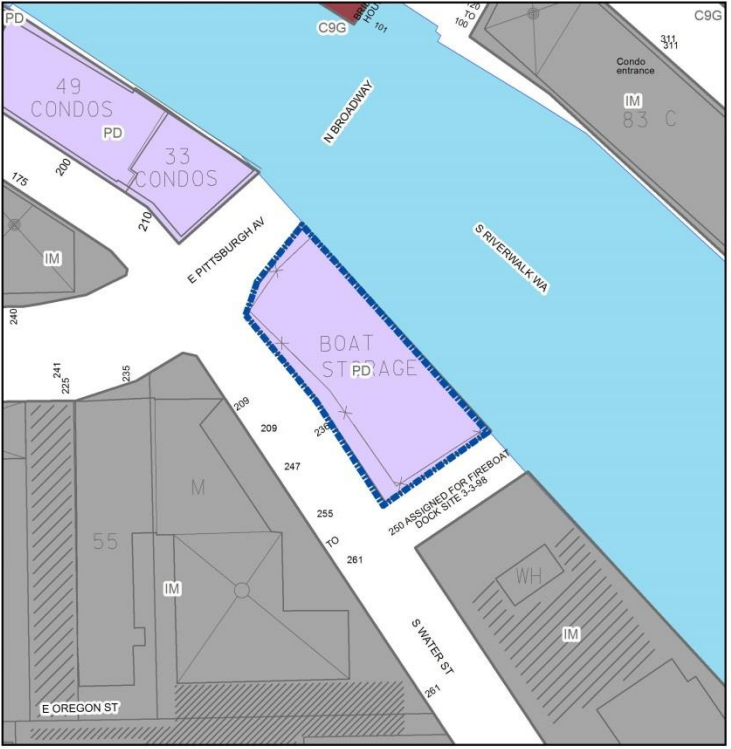


File No. 141842. An ordinance relating to a change in zoning from a Detailed Planned Development known as Rivianna to a Detailed Planned Development for the property located at 234 (f/k/a 236) South Water Street, in the 12th Aldermanic District.



FN 141842
DPD (Rivianna) to DPD
November 2015

Legend



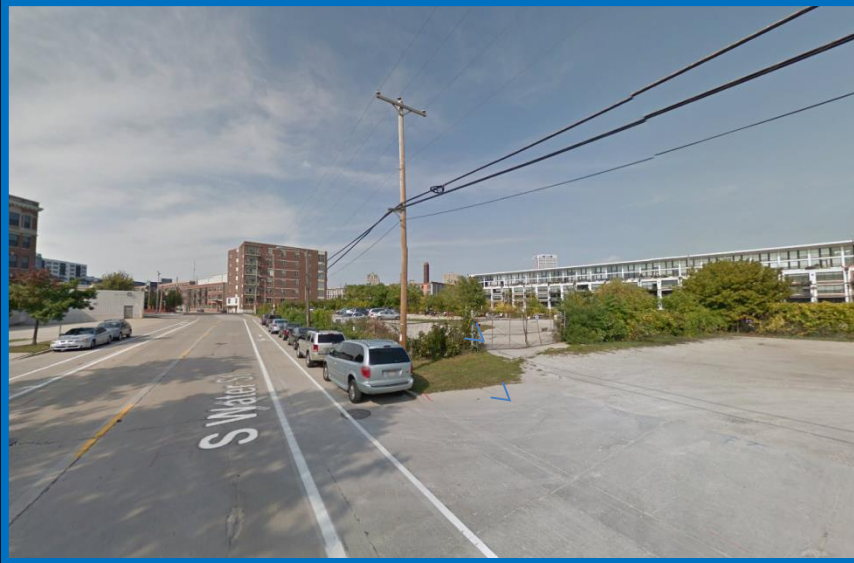
File No. 141842. Site Context Photos



View from South Water Street and East Pittsburgh Avenue



View from North Broadway, looking south



View from South Water Street, looking north





234 south water

234 south water llc

existing site



existing site



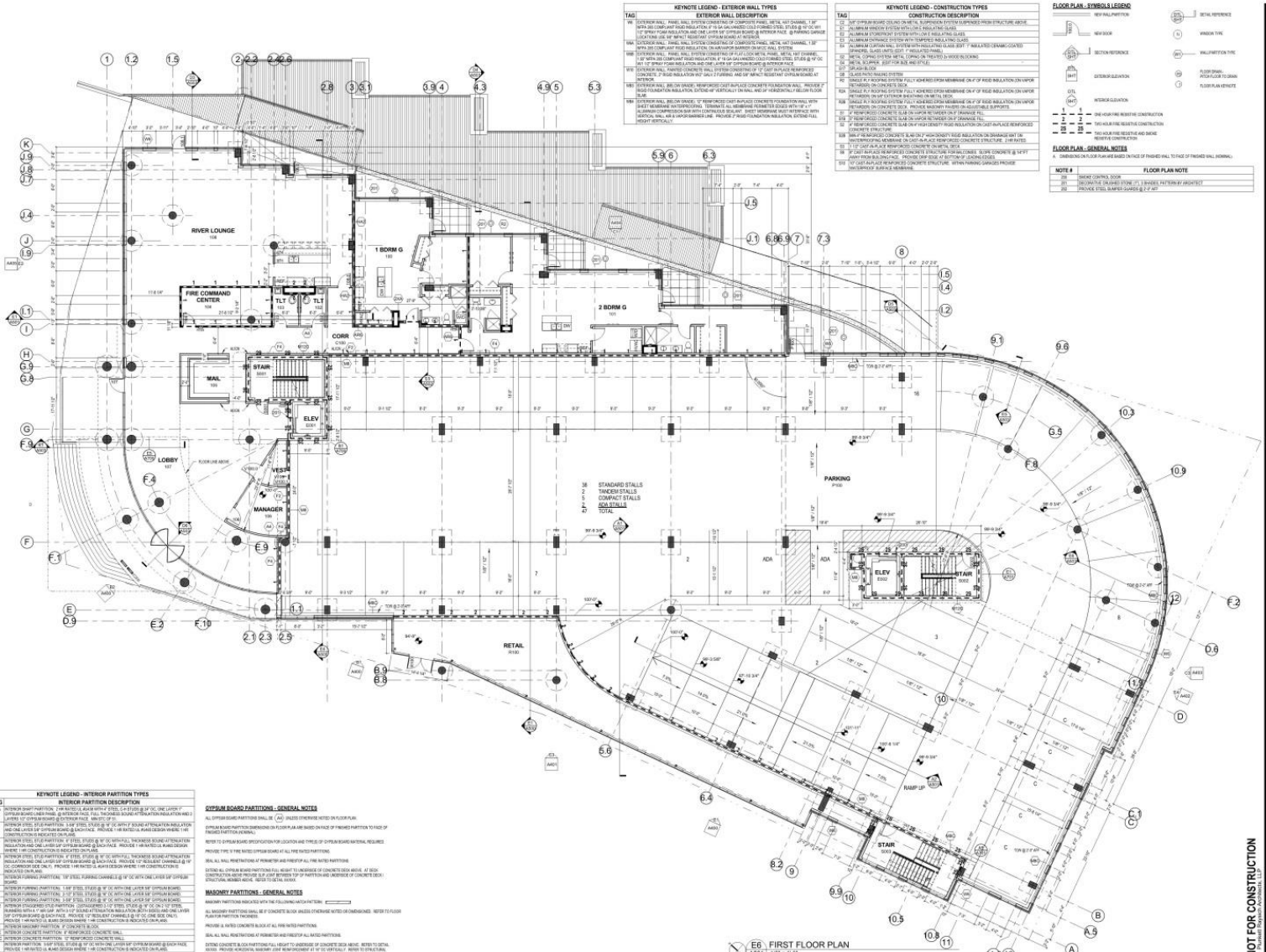
site context



site plan



first floor plan



KEYNOTE LEGEND - EXTERIOR WALL TYPES

TAG	EXTERIOR WALL DESCRIPTION
100	EXTERIOR WALL - 8\"/>

KEYNOTE LEGEND - CONSTRUCTION TYPES

TAG	CONSTRUCTION DESCRIPTION
101	2\"/>

FLOOR PLAN - SYMBOLS LEGEND

(Symbol)	DOOR
(Symbol)	WINDOW
(Symbol)	STAIR
(Symbol)	ELEVATOR
(Symbol)	MECHANICAL EQUIPMENT
(Symbol)	MECHANICAL EQUIPMENT
(Symbol)	MECHANICAL EQUIPMENT
(Symbol)	MECHANICAL EQUIPMENT
(Symbol)	MECHANICAL EQUIPMENT

KEYNOTE LEGEND - INTERIOR PARTITION TYPES

TAG	INTERIOR PARTITION DESCRIPTION
101	INTERIOR PARTITION - 5/8\"/>

GYPSON BOARD PARTITIONS - GENERAL NOTES

1. ALL GYPSON BOARD PARTITIONS SHALL BE (A6) UNLESS OTHERWISE NOTED ON FLOOR PLAN.

2. GYPSON BOARD PARTITIONS SHALL BE CONFORMANT WITH THE REQUIREMENTS OF THE INTERNATIONAL BUILDING CODE (IBC) AND THE CALIFORNIA BUILDING CODE (CBC).

3. ALL GYPSON BOARD PARTITIONS SHALL BE FINISHED WITH A FINISH SYSTEM CONSISTENT WITH THE FINISH SYSTEM OF THE ADJACENT ROOMS.

MASONRY PARTITIONS - GENERAL NOTES

1. ALL MASONRY PARTITIONS SHALL BE CONFORMANT WITH THE REQUIREMENTS OF THE INTERNATIONAL BUILDING CODE (IBC) AND THE CALIFORNIA BUILDING CODE (CBC).

2. ALL MASONRY PARTITIONS SHALL BE FINISHED WITH A FINISH SYSTEM CONSISTENT WITH THE FINISH SYSTEM OF THE ADJACENT ROOMS.

3. ALL MASONRY PARTITIONS SHALL BE CONSTRUCTED WITH A MINIMUM OF 8\"/>

NOT FOR CONSTRUCTION

Drawn by: **AML**
 Date: **08 NOV 15**

Job No: **14024-01**
 Sheet No: **A201**

234 S Water LLC
234 S WATER STREET
 BELLEVUE, WA

prad PARTNER & ARCHITECTS, LLP
 10000 Sand Point Way, NE, Suite 2000, Bellevue, WA 98004
 (206) 835-4100
 www.pradarch.com

pittsburgh view



PLUNKETT RAYSICH ARCHITECTS

entrance view



water street view



river view



bridge view



PLUNKETT RAYSICH ARCHITECTS

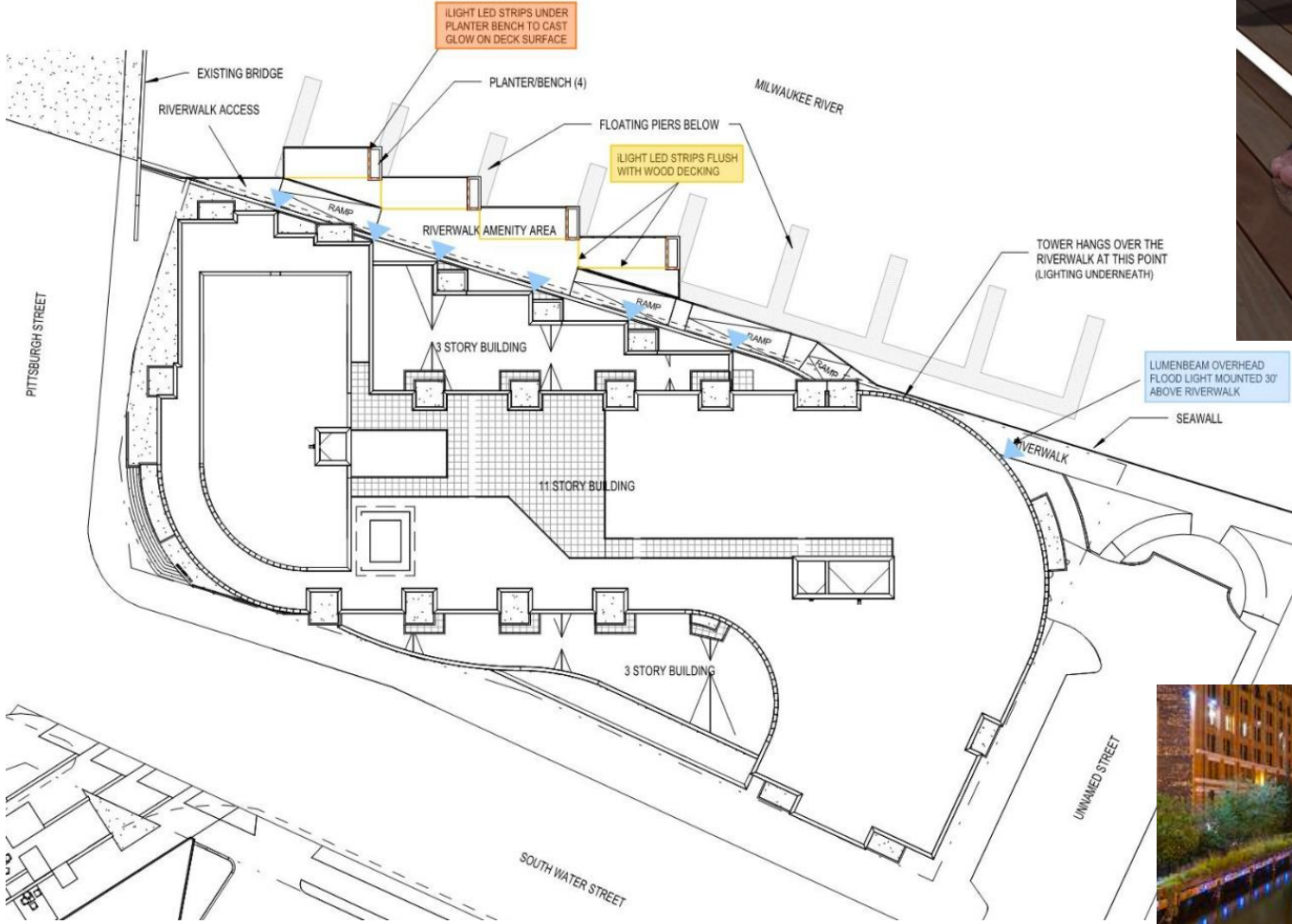
riverwalk design



Cumaru Decking



riverwalk lighting



LED Accent Strips

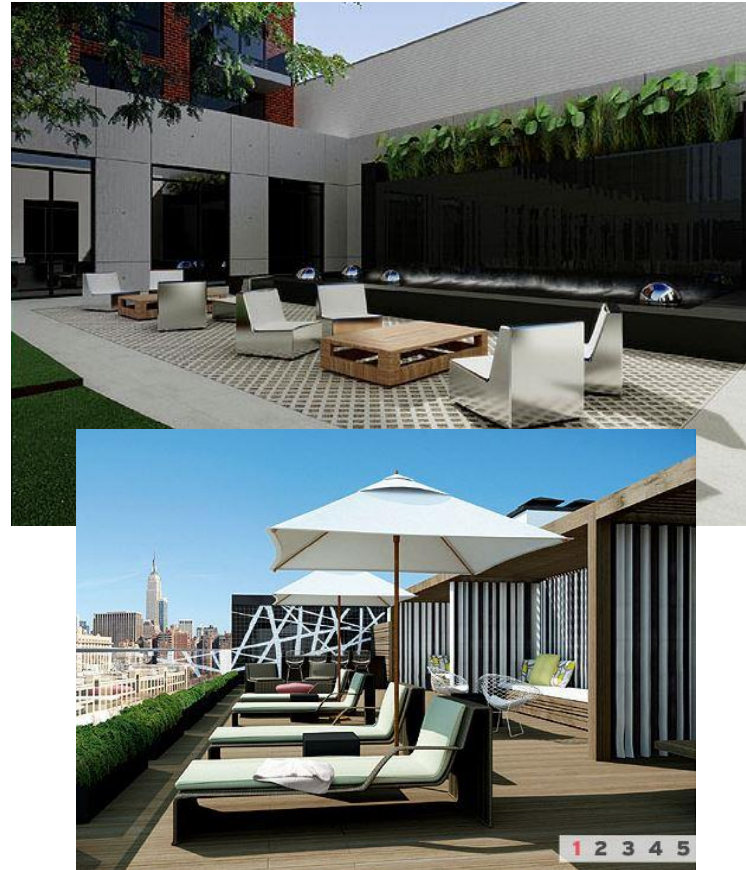


Moon Lighting

amenities



amenities



amenities



amenities



There's only one
234



PLUNKETT RAYSICH ARCHITECTS

234 South Water LLC

pra

eco falls

