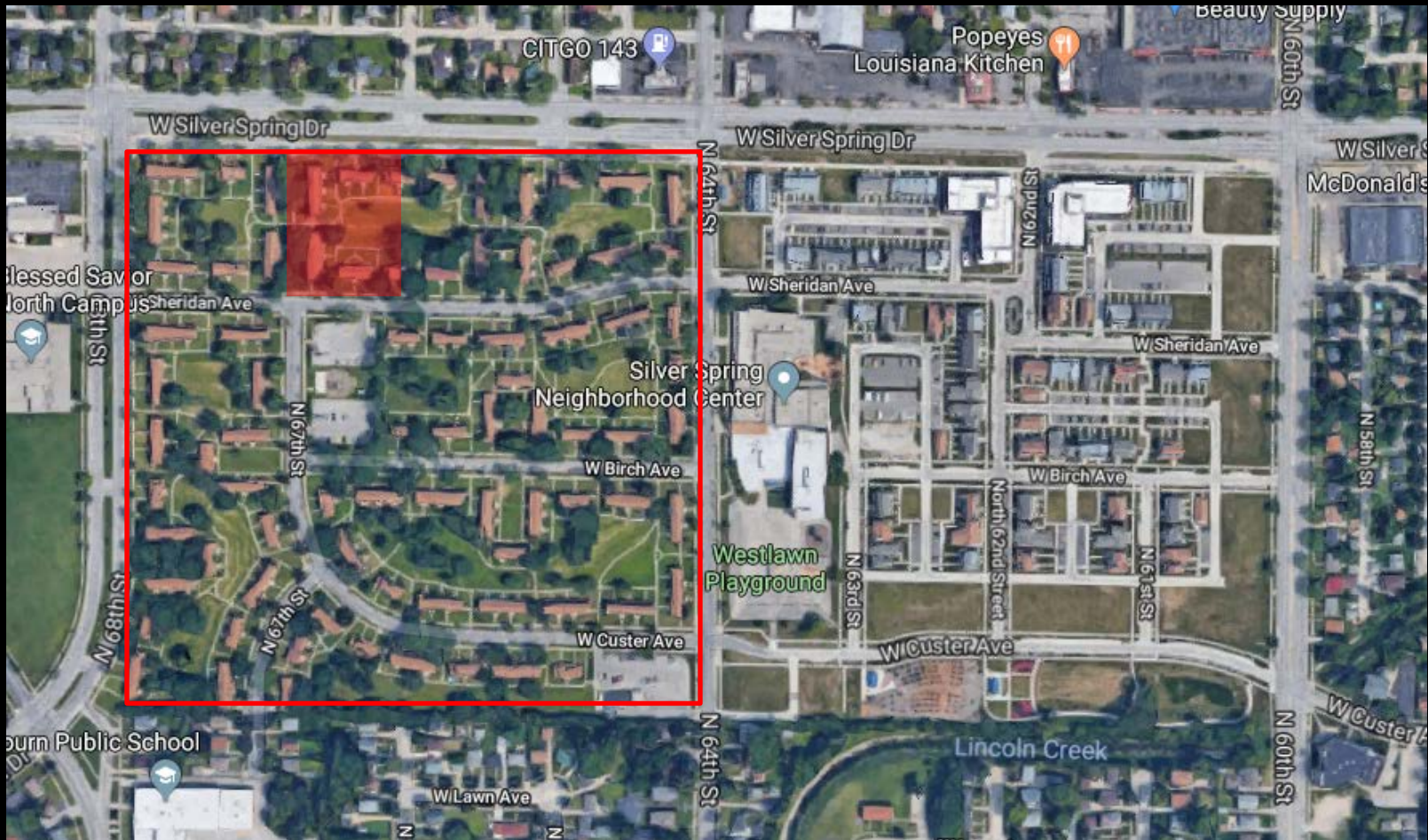
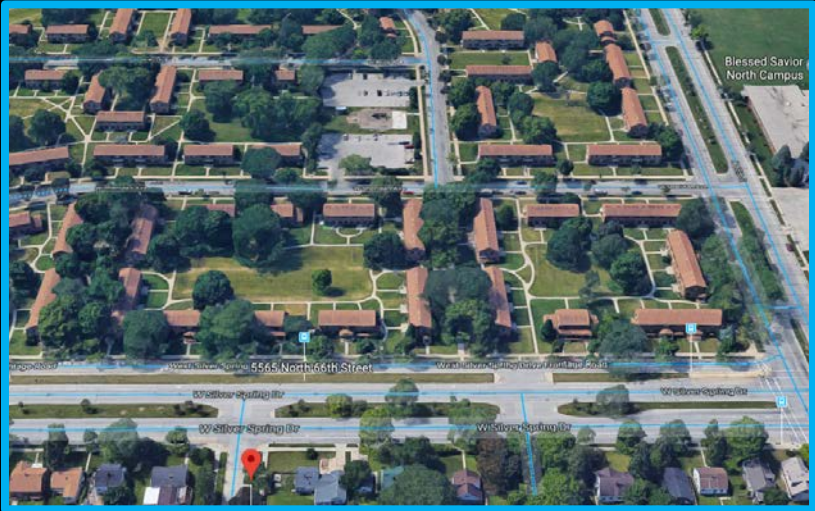


File No. 171881. Substitute resolution relating to a Minor Modification to the Detailed Planned Development known as Westlawn Revitalization – Phase II to allow changes to the previously approved site plan and elevations for the proposed building to be located at 5565 North 66th Street, on the south side of West Silver Spring Drive, west of South 66th Street, in the 2nd Aldermanic District.



File No. 171881. Site Context Photos



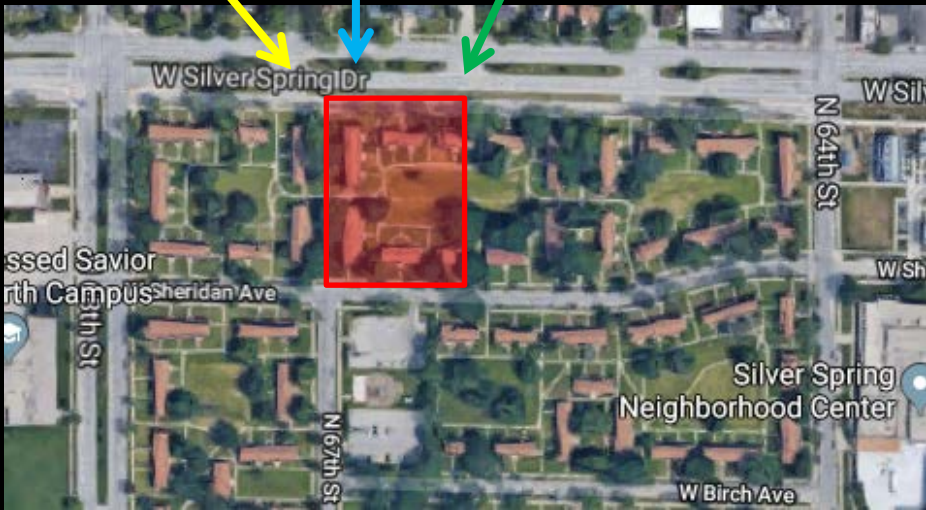
Aerial view south from W. Thurston Ave.



View southeast from W. Silver Spring Drive & N. 67th St.



View southwest from W. Silver Spring Drive & N. 66th St.





MINOR MODIFICATION

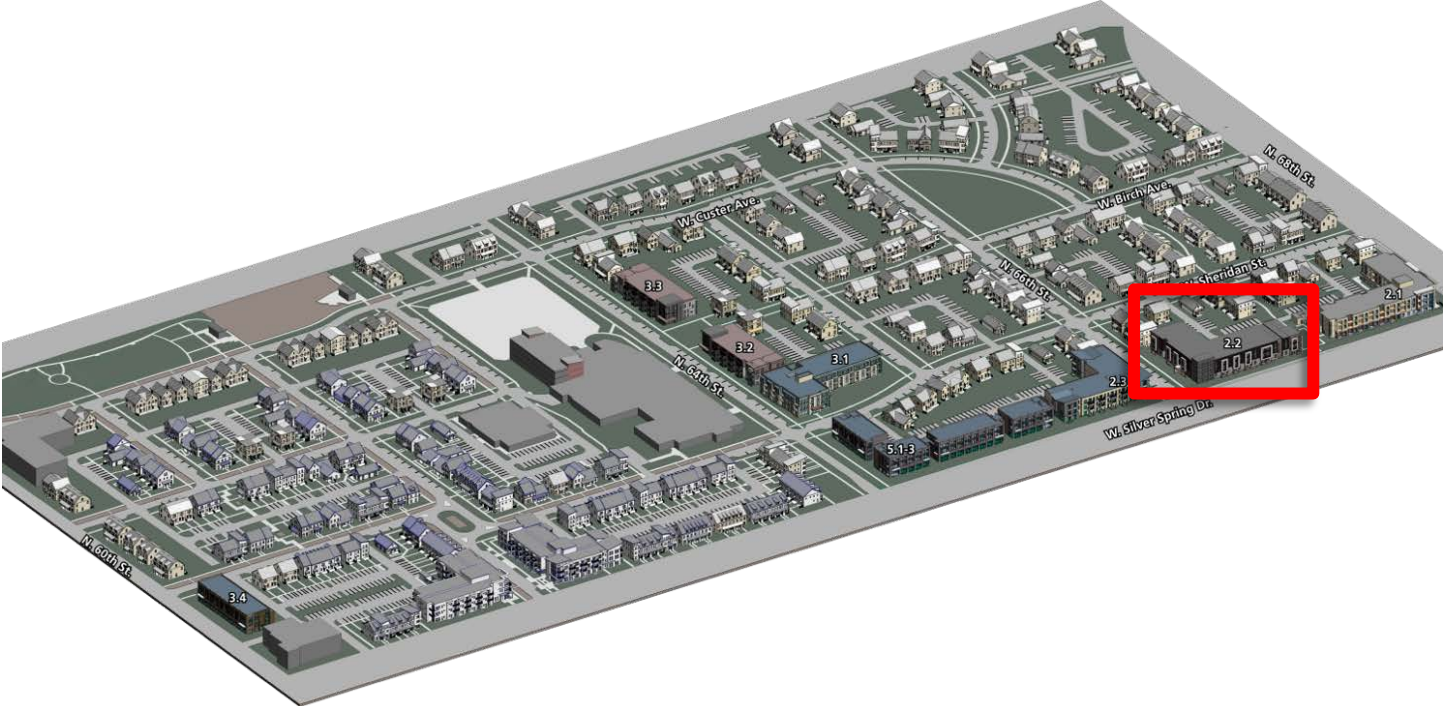
To permit changes to the building footprint and material designations

Westlawn Phase II - Building 2.2

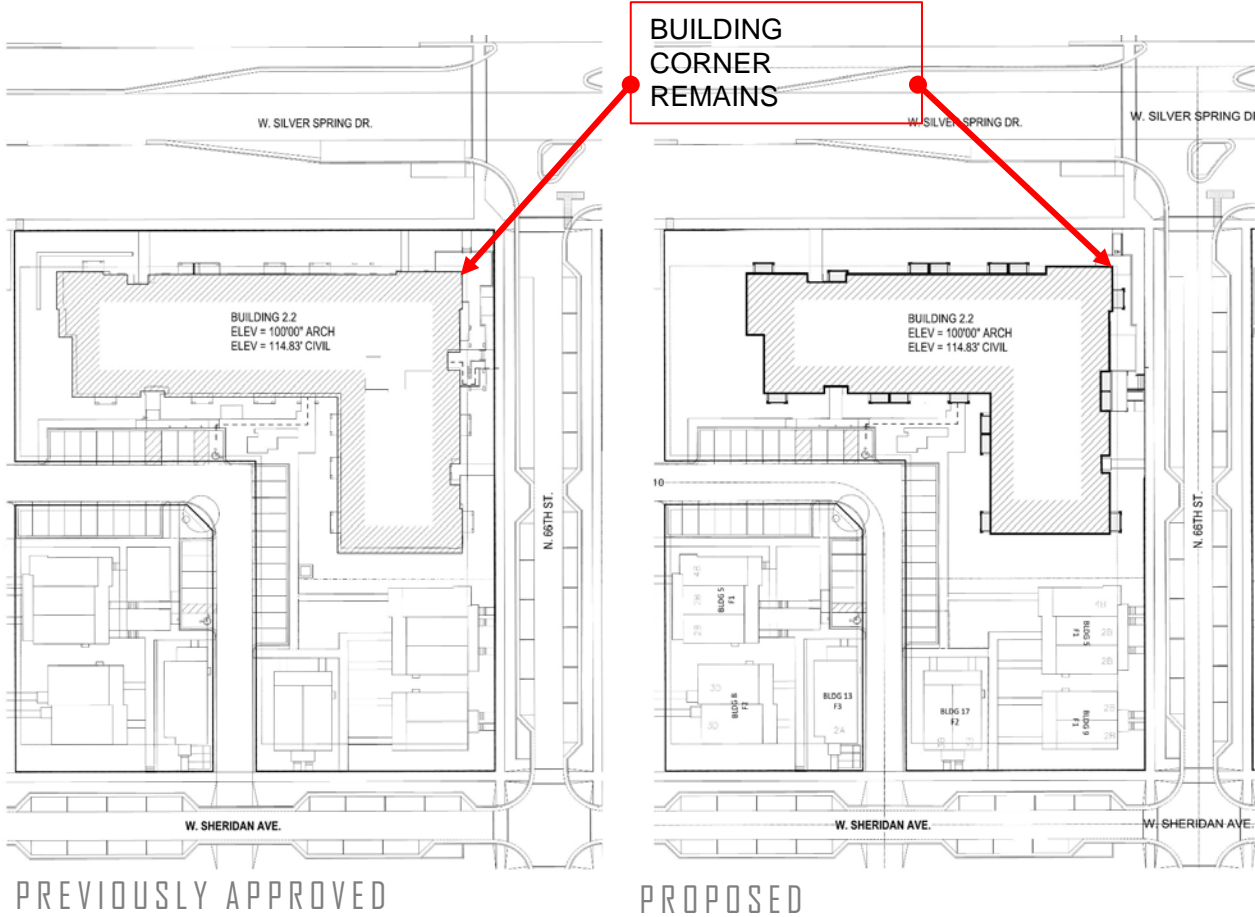
N 66th Street Milwaukee, WI



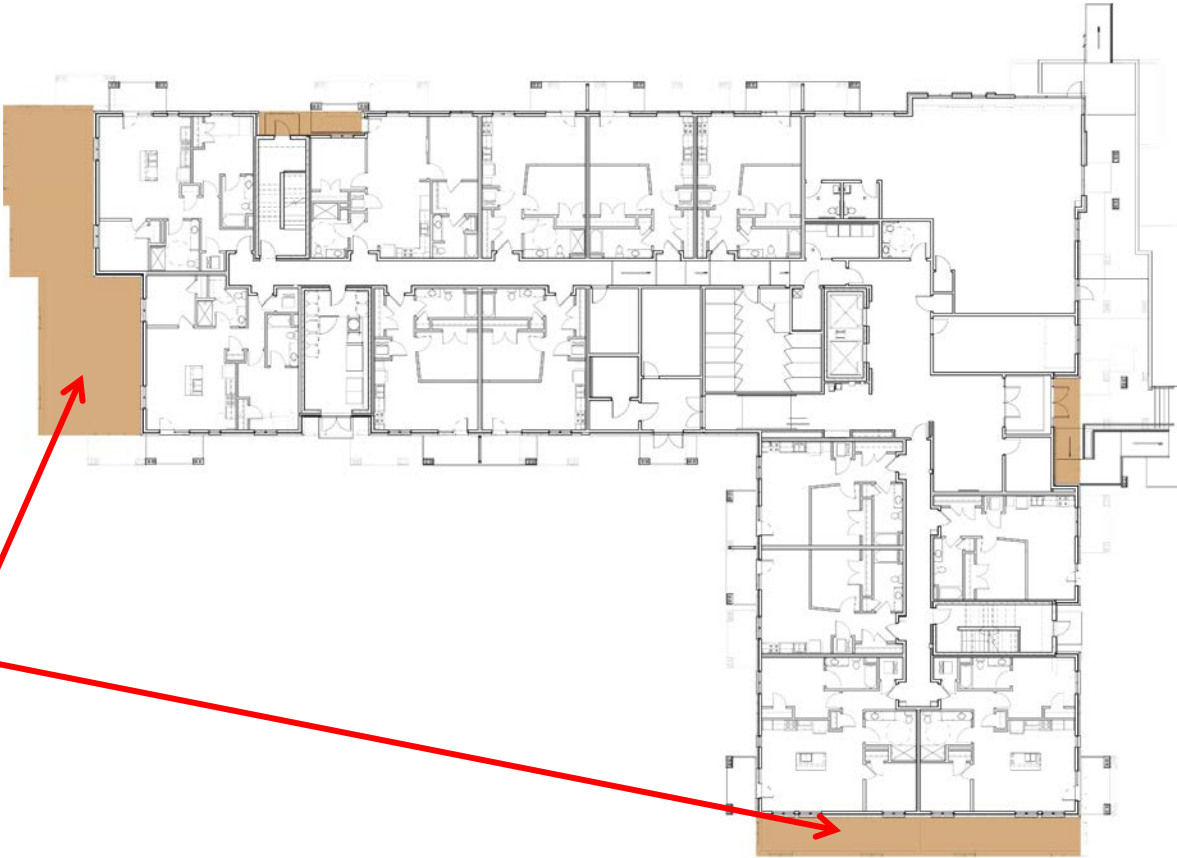
OVERALL SITE AERIAL



SITE COMPARISON



FLOOR PLAN OVERLAY



AREA
REDUCTION



1ST FLOOR PLAN



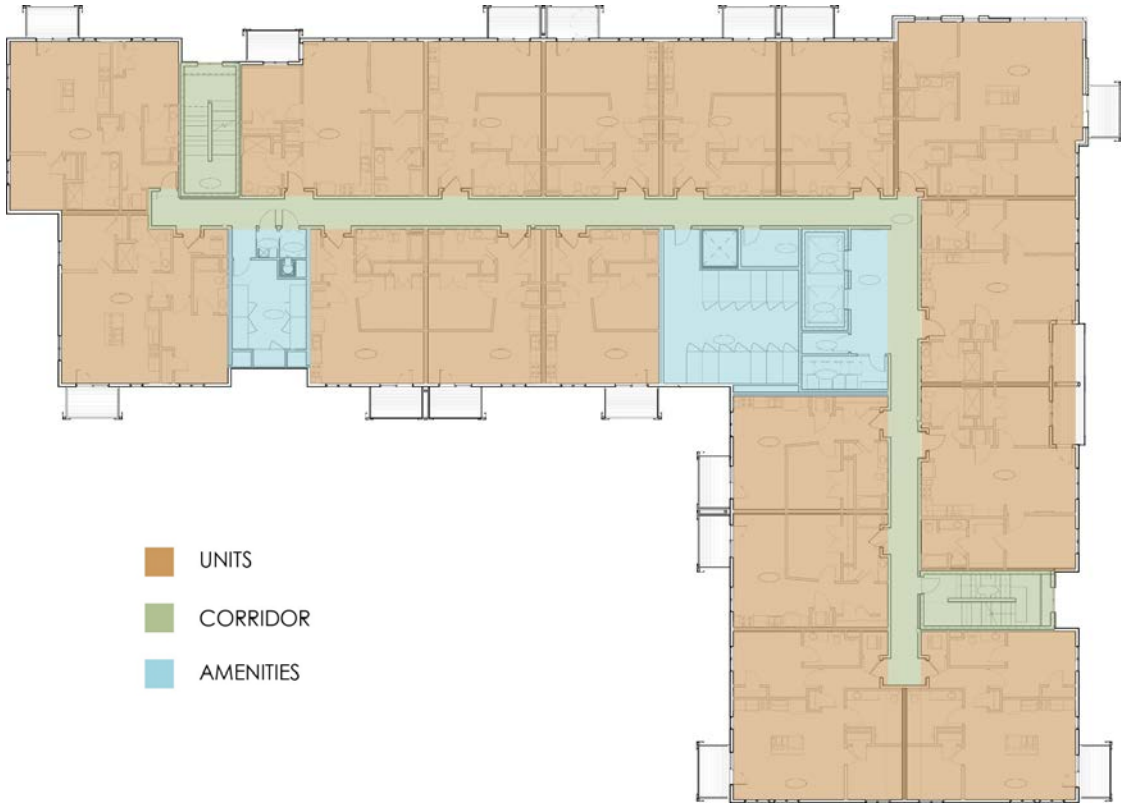
UNIT MIX:

1B:	26
2B:	21
TOTAL:	47

- UNITS
- CORRIDOR
- AMENITIES



2ND AND 3RD FLOOR PLAN

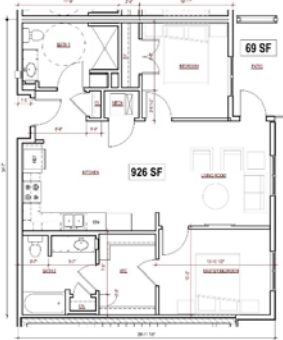


UNIT MIX:	
1B:	26
2B:	21
TOTAL:	47

- UNITS
- CORRIDOR
- AMENITIES



UNIT PLANS



1-BEDROOM

2-BEDROOM



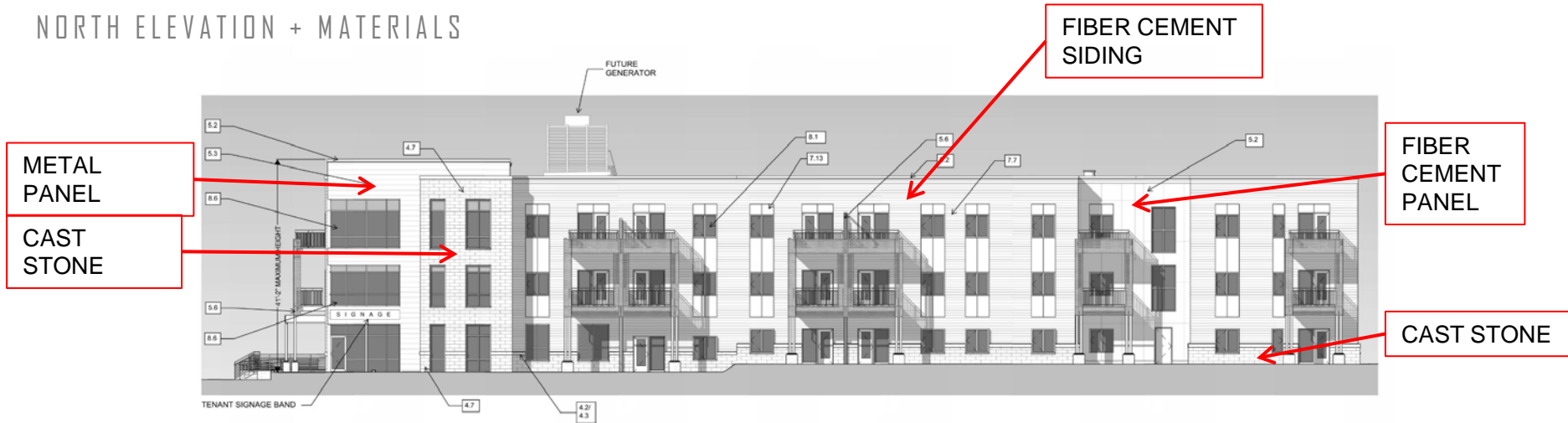
ELEVATION COMPARISONS - EAST



ELEVATION COMPARISONS - NORTH



NORTH ELEVATION + MATERIALS



6" LAP SIDING,
IRON GRAY



CAST STONE, LARGE
FORMAT, 1101



12" METAL PANEL,
COPPER PENNY



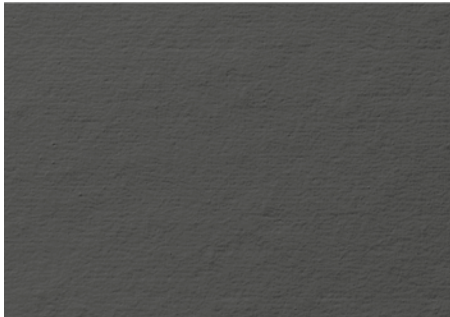
PANEL SIDING,
GRAY SLATE



EAST ELEVATION + MATERIALS

FIBER CEMENT PANEL

CAST STONE



6" LAP SIDING,
IRON GRAY



CAST STONE, LARGE
FORMAT, 1101



12" METAL PANEL,
COPPER PENNY



PANEL SIDING,
GRAY SLATE



SOUTH ELEVATION + MATERIALS



6" LAP SIDING,
IRON GRAY



CAST STONE, LARGE
FORMAT, 1101



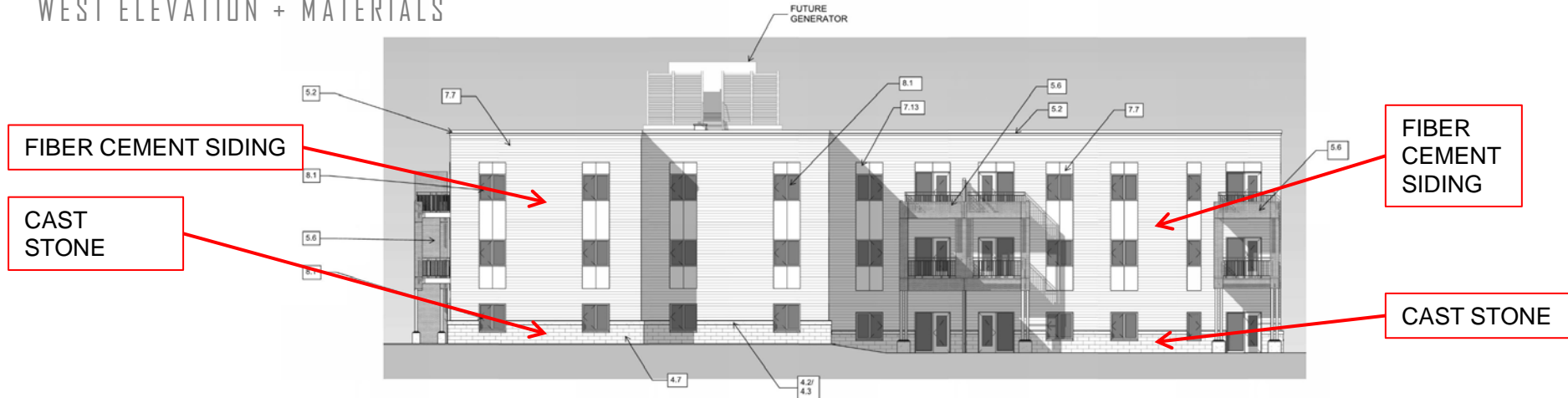
12" METAL PANEL,
COPPER PENNY



PANEL SIDING,
GRAY SLATE



WEST ELEVATION + MATERIALS



6" LAP SIDING,
IRON GRAY



CAST STONE, LARGE
FORMAT, 1101



12" METAL PANEL,
COPPER PENNY



PANEL SIDING,
GRAY SLATE







