

**MILWAUKEE**  

---

**PUBLIC LIBRARY**

---

**Facilities Condition Report  
Capital Improvements Committee  
June 15, 2011**

# Scope of MPL Facilities

## 13 Buildings

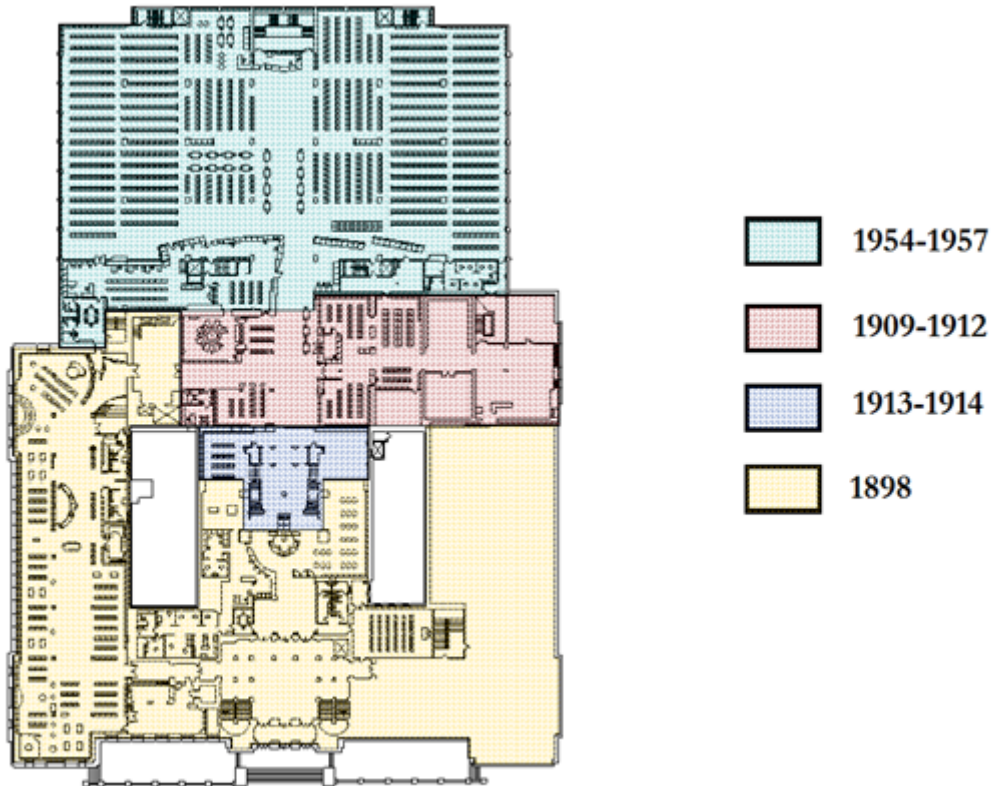
- HVAC Systems
- Technology – 880 public and staff computers
- Public Space – 2,091,581 visits in 2010
- Staff work space – 334 FTEs



# Central Library

## History of the Building

- Original building and additions



# Central Library

## Specifications

- 457,000 square ft.
- 4 Tiers
- 7 chillers (1985-2007)
- 1 cooling tower (1970)
- 24 AHU (7 from 1955)
- 10 elevators (4 from 1955)
- 2 ADA lifts
- 9 transformers
- Centennial Hall complex

# Central Library - Purpose of Building

- Reference and Library Services
- Collections – More than 46 miles of shelving
- Annual visitors – 551,093 in 2010
- Number of employees – 207 FTEs
- Inventory Management
- Tenants
- Deliveries
- Wisconsin Talking Books and Braille Library



# Central Library - Renovations Completed

- 1992 – Frank P. Zeidler Humanities Room
- 1996 – First Floor: Wisconsin Avenue entry, Circulation Area, Schoenleber Reading Room, and Meeting Room I
- 1998 – Betty Brinn Children’s Room





# Central Library - Renovations Completed

- 1999 – Arts and Music Room
- 2000 – Richard E. and Lucile Krug Rare Books Room
- 2000 – Business, Science and Periodicals Room
- 2003 – Wells Street Entrance (ADA accessible)
- 2010 – Drive-Up Service Area



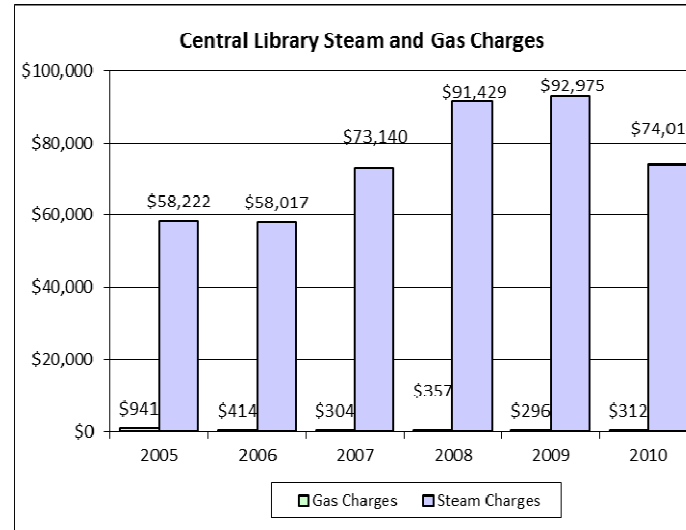
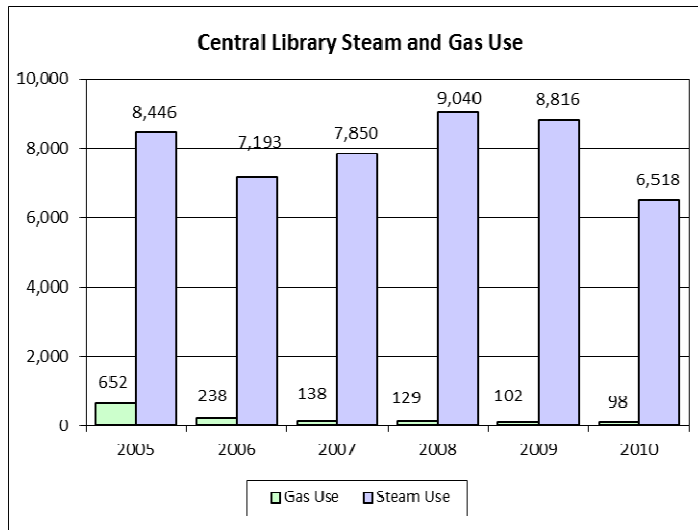
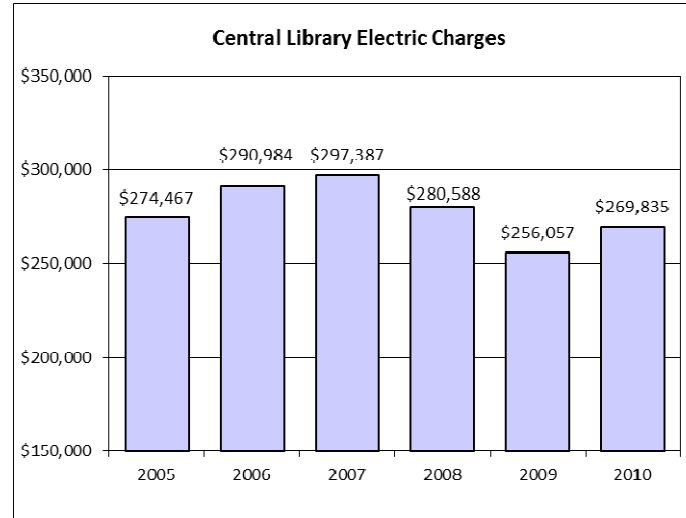
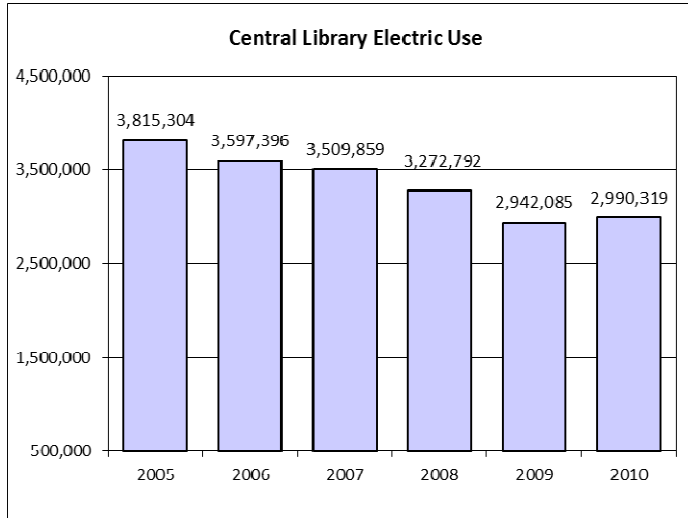
# Central Library - Projects Completed – Energy Efficiencies

- Lighting Upgrades
- Green Roof





# Central Library - Energy Efficiencies



# Central Library - Areas Still in Need

- Staff work areas



# Central Library - Areas Still in Need

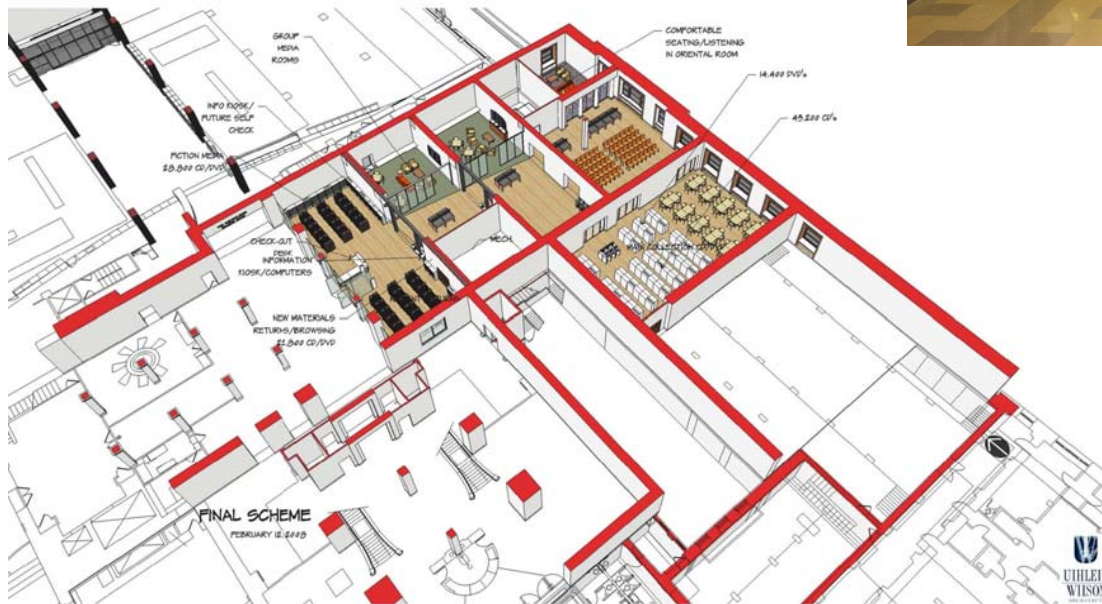
- Environmental conditions on Tiers





# Central Library - Areas Still in Need

- Media Room
- Keycard access



MILWAUKEE  
PUBLIC LIBRARY

# Branch Library System

## History

- 12 branches – Ages 0 to 50 years



## Specifications

- 15,346 average square footage
- 12 HVAC systems
- 1 elevator





# Branches - Purpose of the Buildings

- Programming and Community Services
- Collections – 12 miles of shelving
- Annual visits – 1,540,488 in 2010
- Number of employees – 127 FTEs



# Branches

## Renovations Completed

- 1994 – Atkinson
- 1994 – Zablocki
- 1995 – Capitol
- 1997 – Martin Luther King
- 2000 – Forest Home

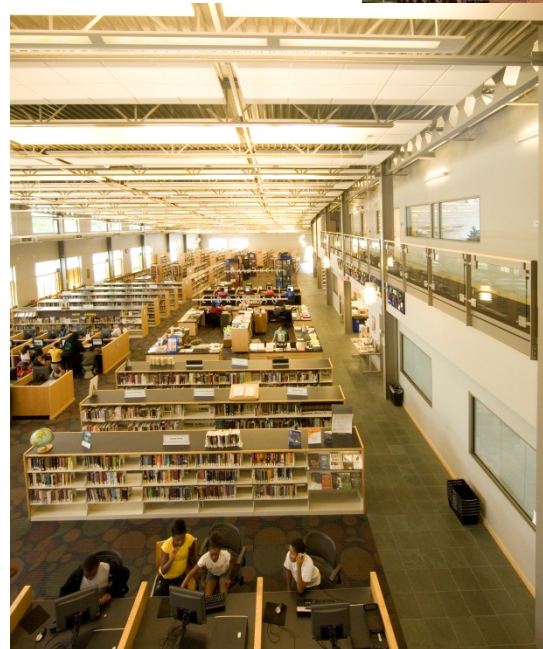


## New Construction

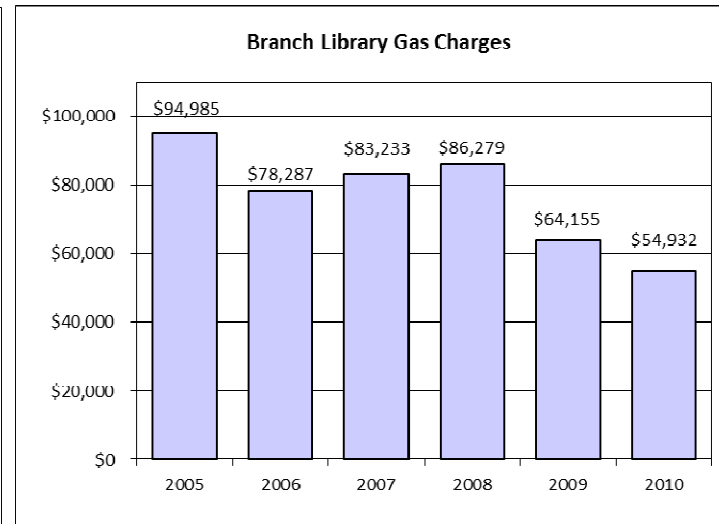
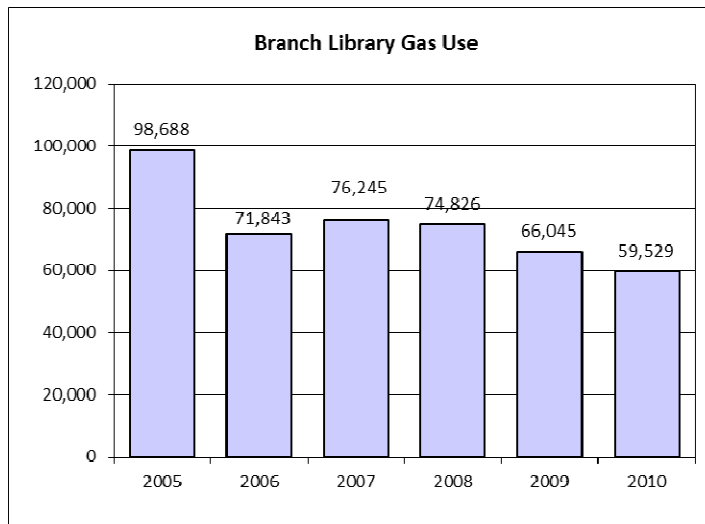
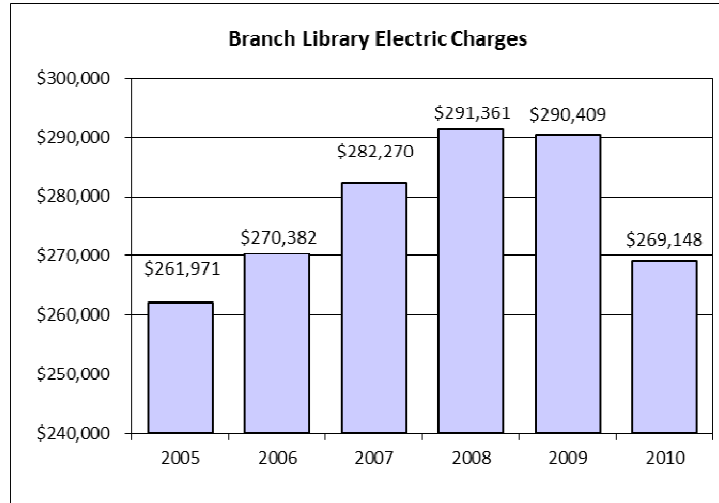
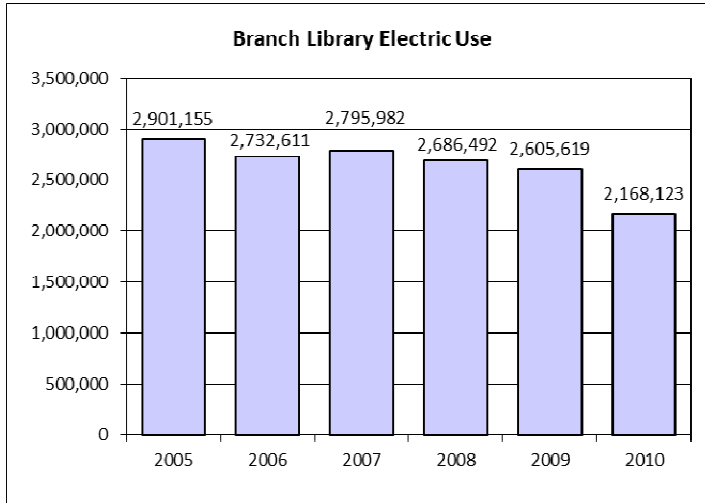
- 1989 - Center Street
- 1993 - Bay View
- 2003 - Washington Park
- 2011 - Villard Square

# Branches - Projects Completed – Energy Efficiencies

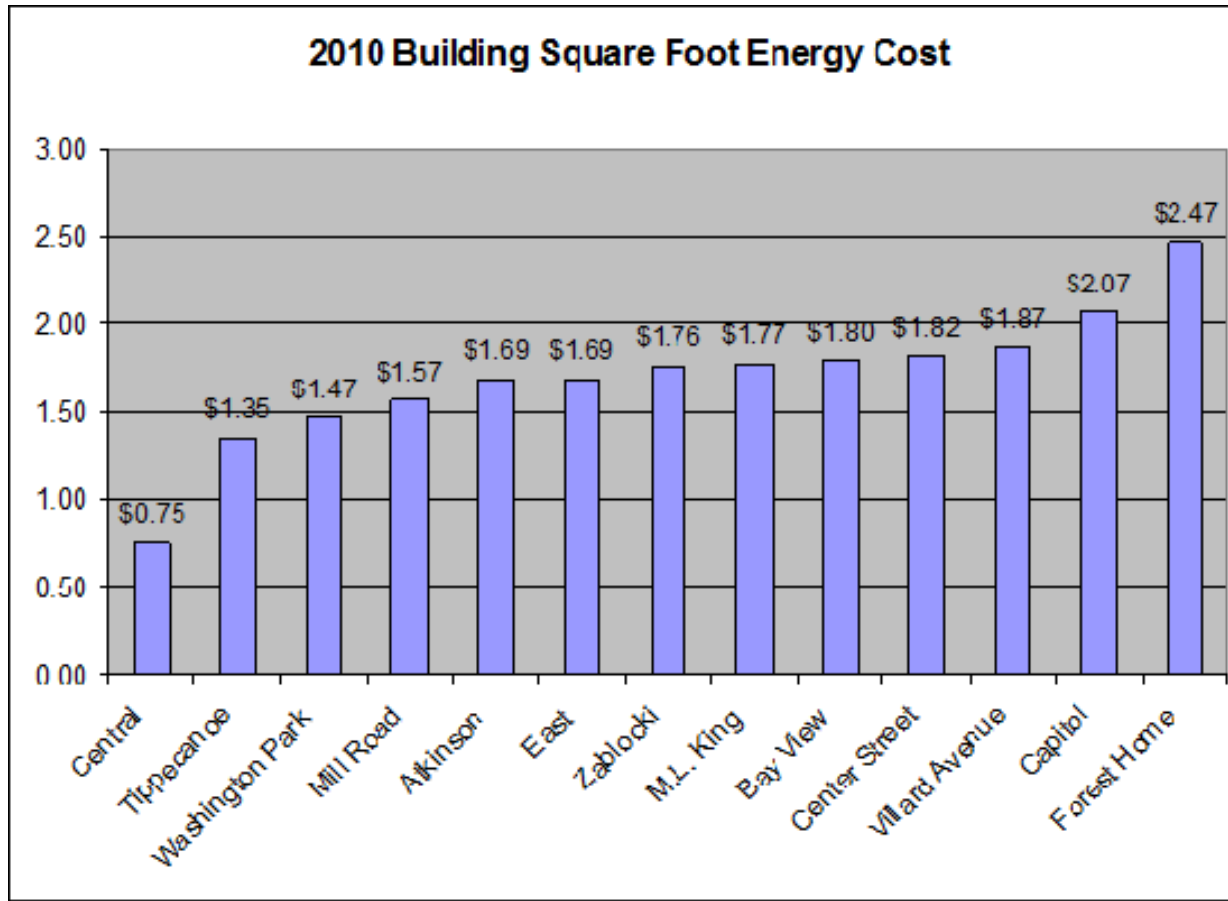
- Geothermal
- Sun shades
- Lighting upgrades
- Window replacements



# Branches - Energy Efficiencies



# Projects Completed – Energy Efficiencies All Locations



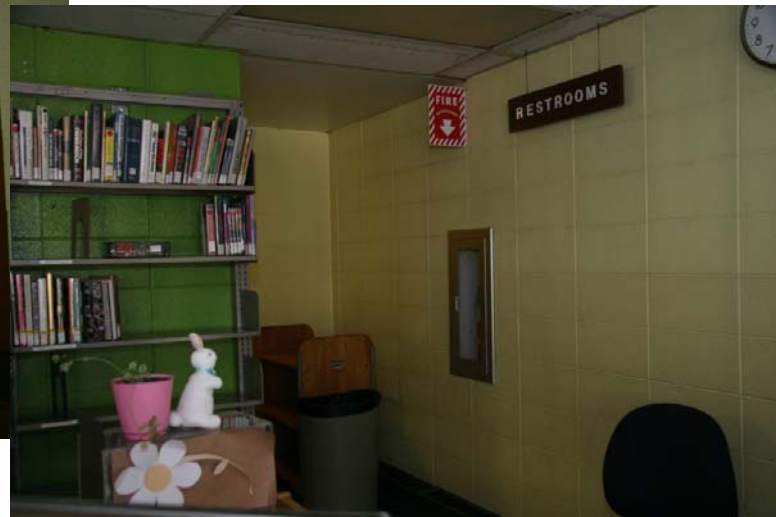


# Branches - Areas Still in Need

- ADA issues



Tippecanoe Branch



# Branches - Areas Still in Need

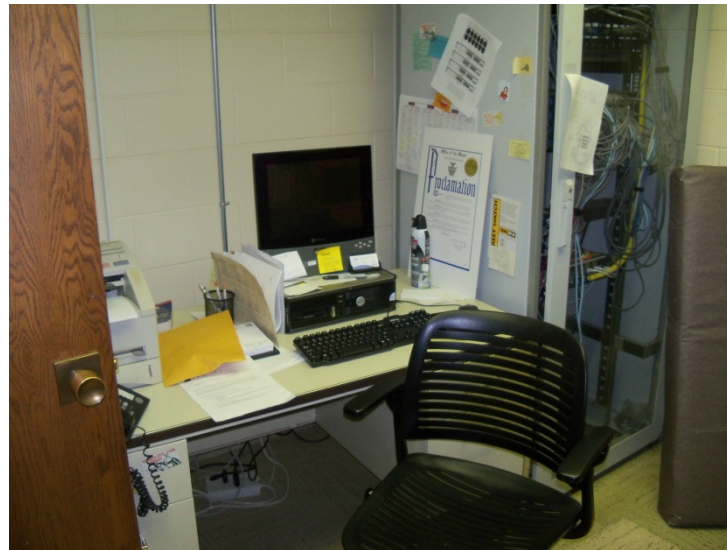
- Staff work areas



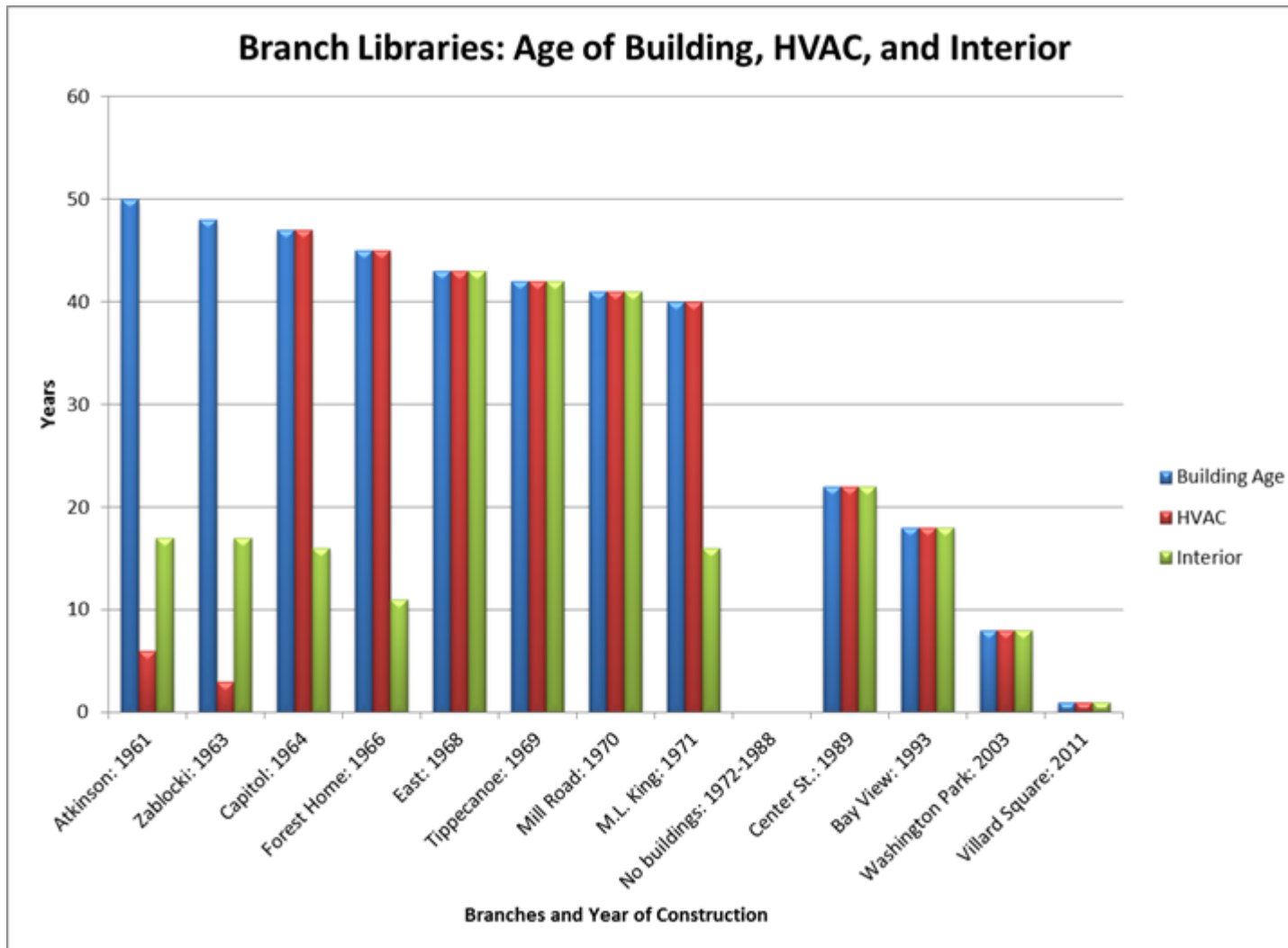
East Branch



Mill Road Branch



# Branches - Condition Overview



# Care and Maintenance

## Scheduled Upgrades

- Paint
- Carpet
- Renovation
- Windows
- Roofs
- Repaving
- HVAC



Tippecanoe Meeting Room



# Care and Maintenance

## Tools

- Maintenance schedules
- Inspection regimen
- Disaster recovery plan
- Long-term facilities plan





# Priorities for 2012

## Central Library

- \$800,000 Interior Upgrades
- \$237,000 Mechanical Repairs
- \$100,000 Exterior Repairs



# Priorities for 2012

## Branch System

- \$1 million – East Library
- \$3 million – Area Library



# MPL Facilities Condition Report



*We are happy to answer any questions. Thank you.*