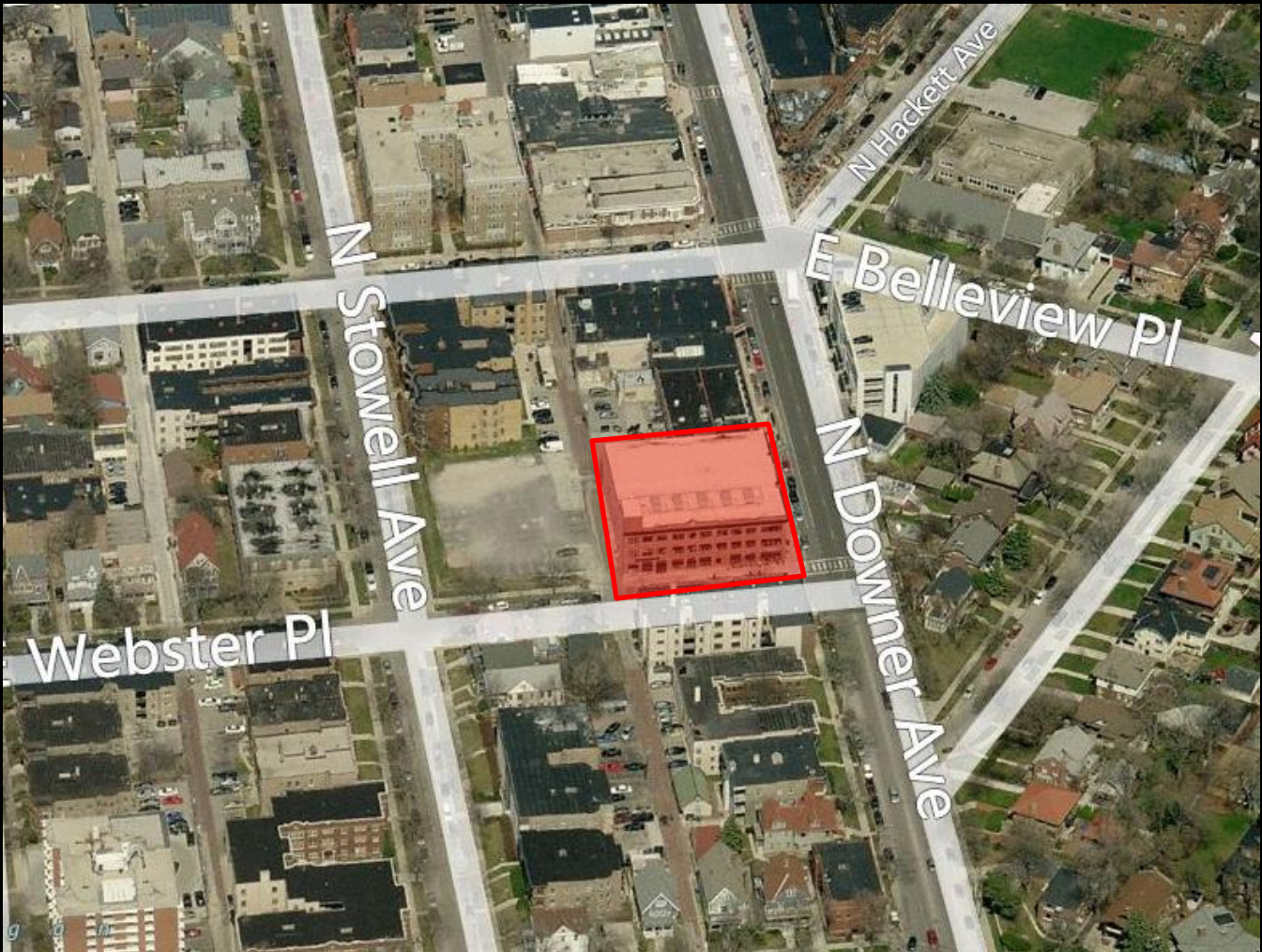
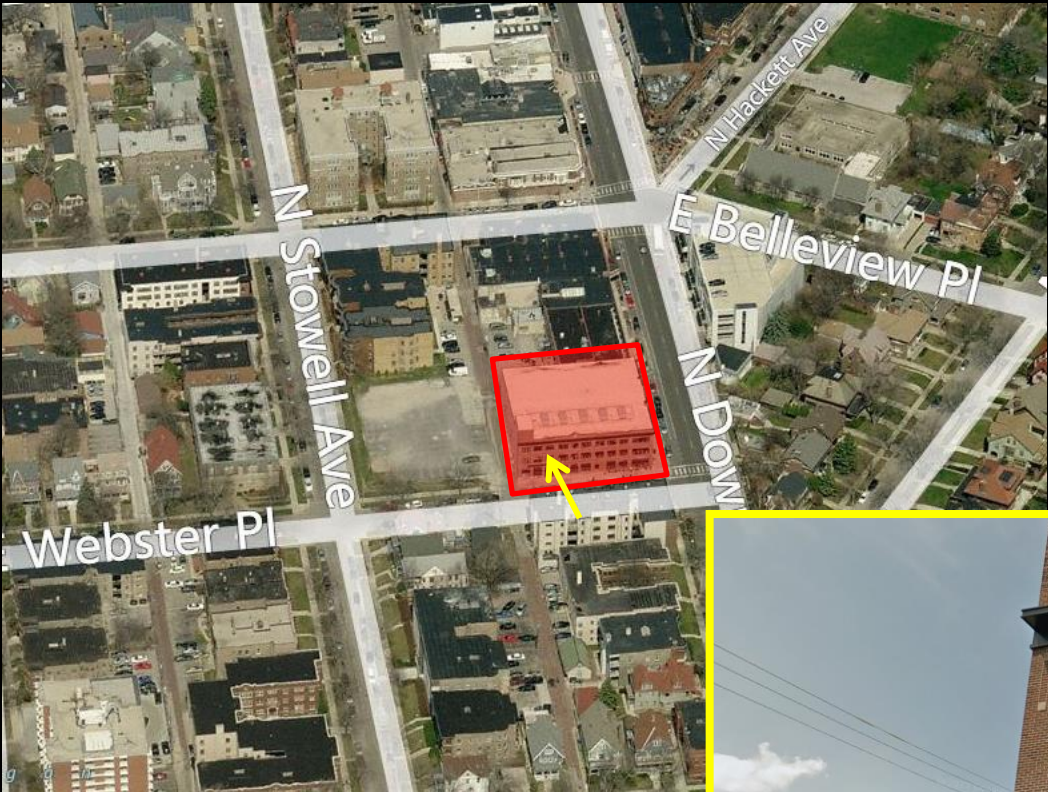


File No. 141177. A resolution relating to a minor modification to the Detailed Planned Development known as Downer Avenue Redevelopment, Phase II, for signage on the building located at 2524 East Webster Place, located on the north side of East Webster Place, west of North Downer Avenue, in the 3rd Aldermanic District.

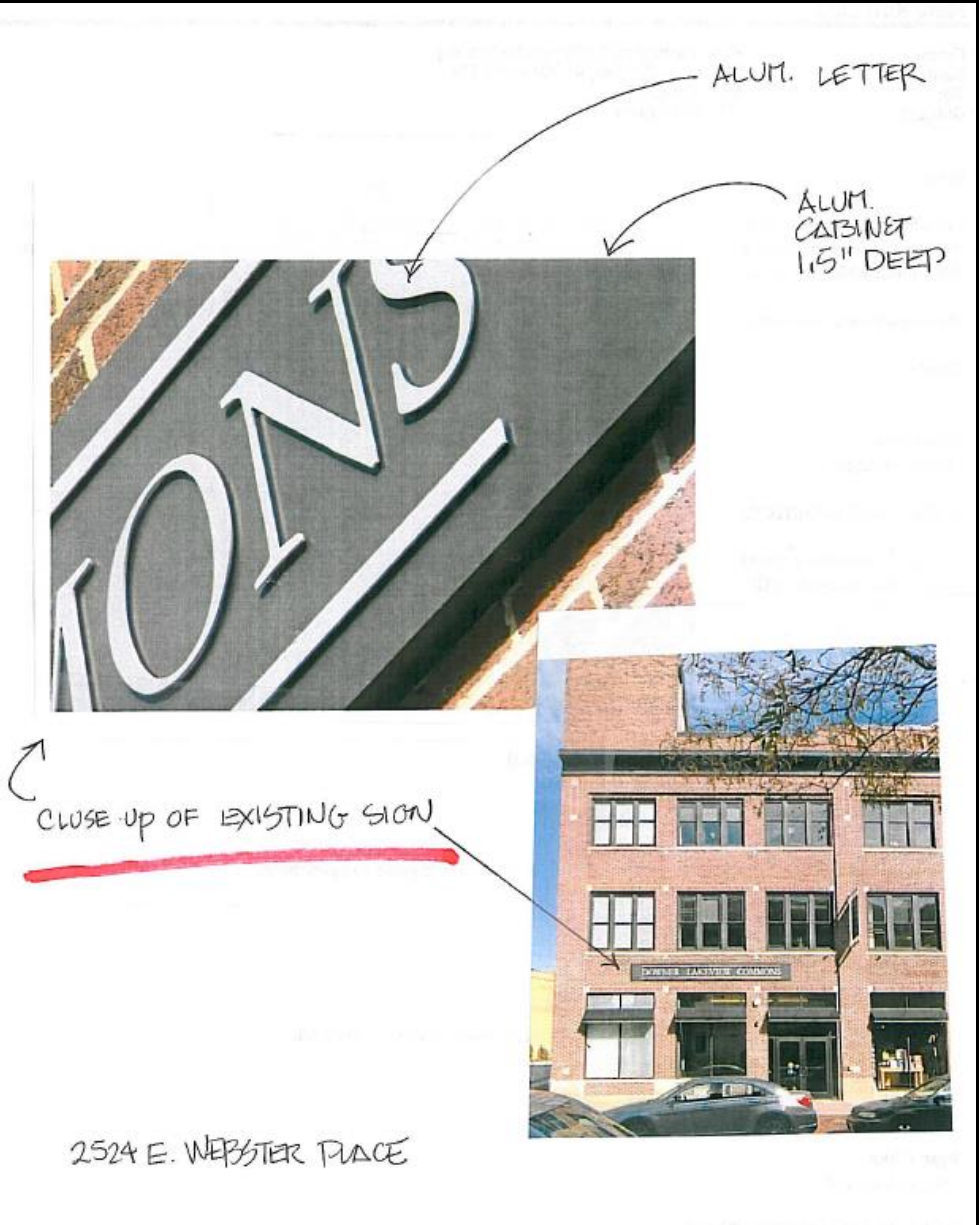


File No. 141177.

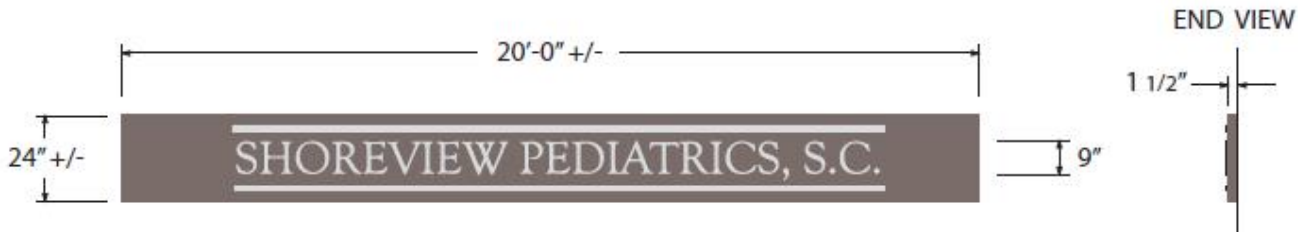


View of building from E Webster Pl, looking north

File No. 141177. Details of Existing Sign.



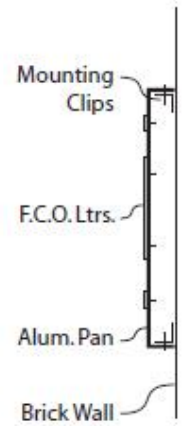
File No. 141177. Proposed Sign.



A Fabricated Aluminum Wall Sign

- Non-Lit
- Quantity: One (1)
- Letters: 1/8" thick Aluminum
Painted Brushed Aluminum (satin)
Stud Mounted
- Background Pan: Fabricated Aluminum
1.5" deep
Paint: Dark Bronze
Mounted w/ clips - (hidden fasteners)

Relocate
Existing Sign
to 2nd Floor



FIELD SURVEY REQUIRED PRIOR TO PRODUCTION
- BUILDING DIMENSIONS TO BE FIELD VERIFIED PRIOR TO PRODUCTION.

ATTENTION: PROOF ALL DRAWINGS CAREFULLY! IT IS THE RESPONSIBILITY OF THE CUSTOMER TO APPROVE COLOR, STYLE, SHAPE, PROPORTION OF GRAPHICS AND LOGOS, AND SPELLING OF TRADEMARKS AND SERVICEMARKS