



Accessible Entrance Addition  
and Modifications at  
St. Anthony Catholic Church



1711 South 9<sup>th</sup> Street  
Milwaukee, WI

Date: July 15, 2013

INDEX

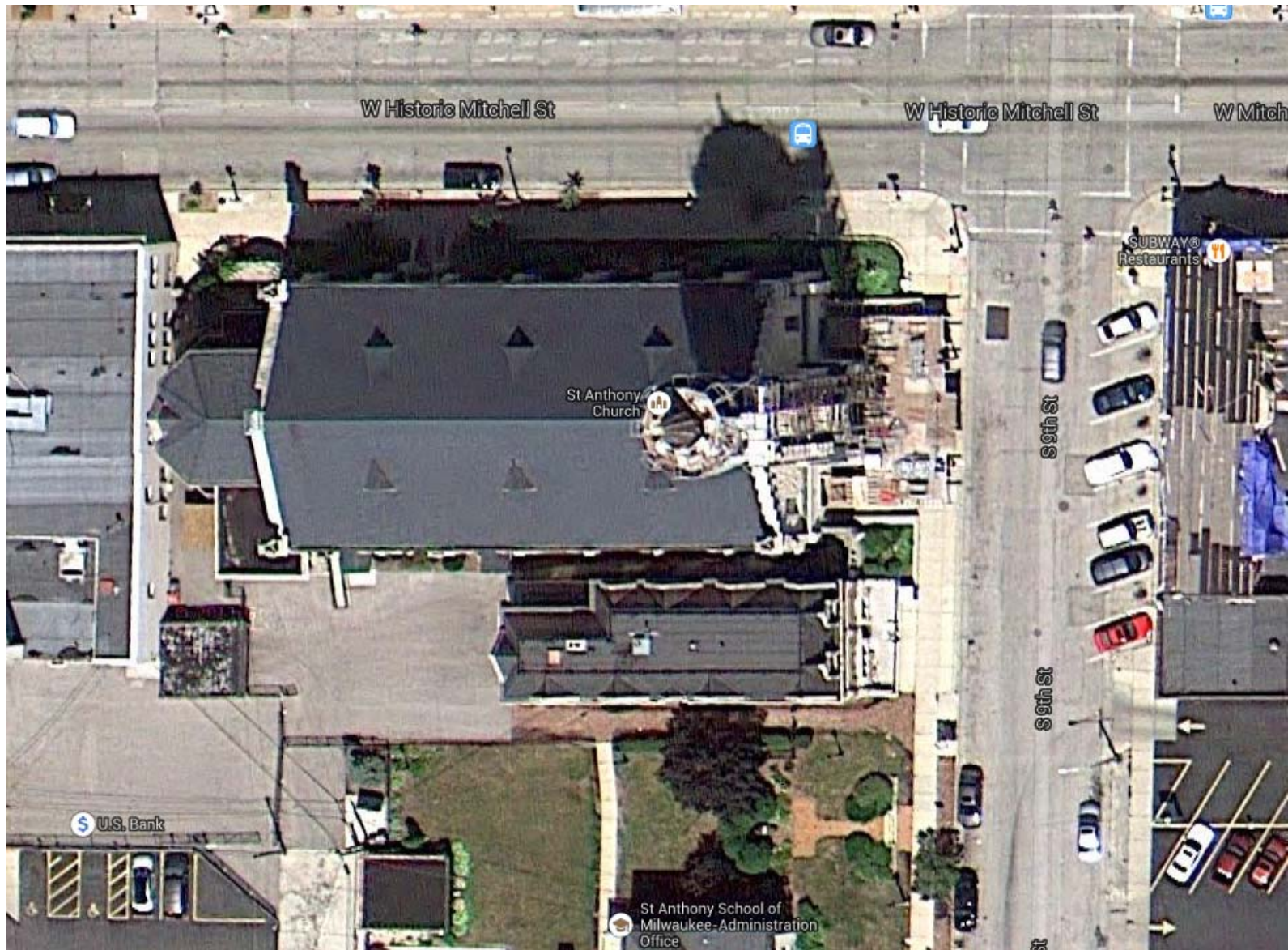
- I. General Description of Existing Conditions
- II. General Description of New Scope of Work
- III. Images of Existing Conditions
- IV. Architectural renderings of proposed new addition
  - Plan View
  - Roof View
  - Image #1 \_ New Elevation
  - Image #2 \_ Interior View
  - Image #3 \_ Interior View
  - Image #4 \_ Interior View
- V. Architectural Drawings
  - A. Existing site/floor plan
  - B. Existing partial floor plan
  - C. New partial floor plan
  - D. Sections through proposed new addition

## I. General Description of Existing Conditions

- The proposed project is located at the intersection of South 9<sup>th</sup> Street Historic Mitchell Street. The existing site includes St. Anthony's Catholic Church and their attached church rectory.  
(see Image page 4)
- The church façade is composed of split face stone with some "cream city" brick. The rectory is a wood frame structure with a façade of "cream city" brick and a natural stone base.
- The front/East façade of the rectory and the church are connected through a previous addition. Behind the existing connection between the two buildings is an outdoor space that is approximately sixty feet long by ten feet wide. (see Image page 7)
- The Church has a small parking lot behind the existing rectory building.  
(see Image page 5)

## II. General Description of New Scope of Work

- The proposed project is to provide an accessible entrance to both the existing church and rectory building through a new addition between the two buildings.
- The proposed new addition will create a new accessible entrance from the existing parking lot at the rear of the rectory.
- The façade of the new entrance will include a stone base and "cream city" brick to match the existing rectory.
- The brick on the cornice of the new façade will be corbelled to match the existing rectory.
- The new aluminum storefront entrance and window frame color will be selected to match the existing window frames.
- The new roof will be designed as to not disturb the existing church windows. The roof will contain skylights to provide natural daylight into the new corridor.



Existing aerial view



Project # 201301

Accessible Entrance Addition  
and Modifications at  
St. Anthony Catholic Church  
1711 South 9<sup>th</sup> Street  
Milwaukee, WI



Page 4



Existing conditions looking East



Existing conditions looking East



Project # 201301

Accessible Entrance Addition  
and Modifications at  
St. Anthony Catholic Church  
1711 South 9<sup>th</sup> Street  
Milwaukee, WI





Existing rectory North elevation



Existing church South elevation



Project # 201301

Accessible Entrance Addition  
and Modifications at  
St. Anthony Catholic Church  
1711 South 9<sup>th</sup> Street  
Milwaukee, WI





Existing church and rectory connection



Existing church and rectory connection



Project # 201301

Accessible Entrance Addition  
and Modifications at  
St. Anthony Catholic Church  
1711 South 9<sup>th</sup> Street  
Milwaukee, WI





Existing rectory low roof



Existing connection roof



Project # 201301

Accessible Entrance Addition  
and Modifications at  
St. Anthony Catholic Church  
1711 South 9<sup>th</sup> Street  
Milwaukee, WI





Existing roof at church window



Existing roof at church window



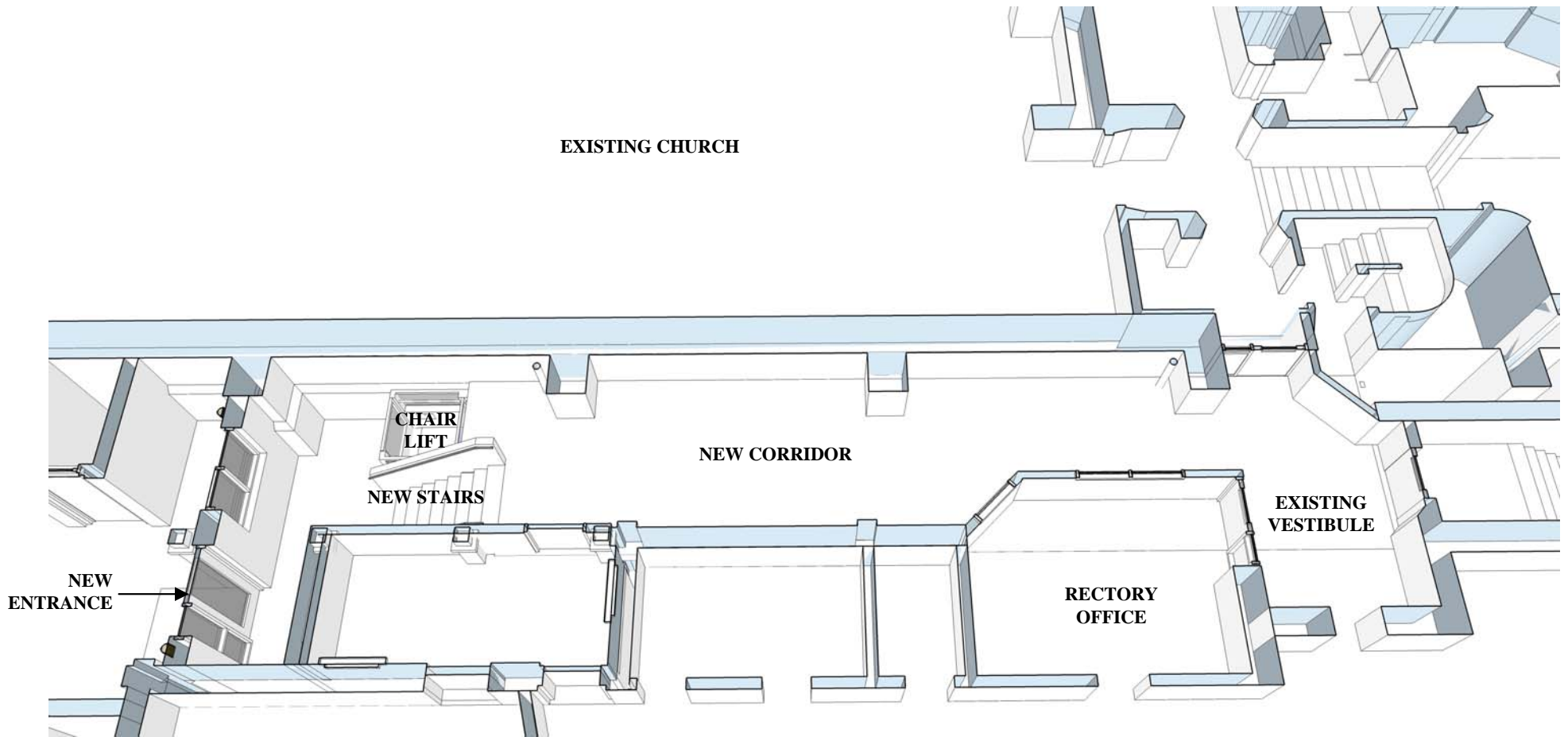
Project # 201301

Accessible Entrance Addition  
and Modifications at  
St. Anthony Catholic Church  
1711 South 9<sup>th</sup> Street  
Milwaukee, WI



Page 9





Plan View



Project # 201301

Accessible Entrance Addition  
and Modifications at  
St. Anthony Catholic Church  
 1711 South 9<sup>th</sup> Street  
 Milwaukee, WI





**ELEVATION NOTES:**

1. SPLIT FACE STONE TO MATCH EXISTING
2. "CREAM CITY" BRICK
3. BRICK CORNICE
4. ALUMINUM WINDOW
5. ALUMINUM DOOR
6. METAL CLAD CANOPY
7. EXISTING PIER
8. EXISTING ROOF
9. NEW ROOF
10. SKYLIGHT

Roof View



Project # 201301

Accessible Entrance Addition  
and Modifications at  
St. Anthony Catholic Church  
 1711 South 9<sup>th</sup> Street  
 Milwaukee, WI



ELEVATION NOTES:

1. SPLIT FACE STONE TO MATCH EXISTING
2. "CREAM CITY" BRICK
3. BRICK CORNICE
4. ALUMINUM WINDOW
5. ALUMINUM DOOR
6. METAL CLAD CANOPY
7. EXISTING PIER



Image #1



Project # 201301

Accessible Entrance Addition  
and Modifications at  
St. Anthony Catholic Church  
1711 South 9<sup>th</sup> Street  
Milwaukee, WI



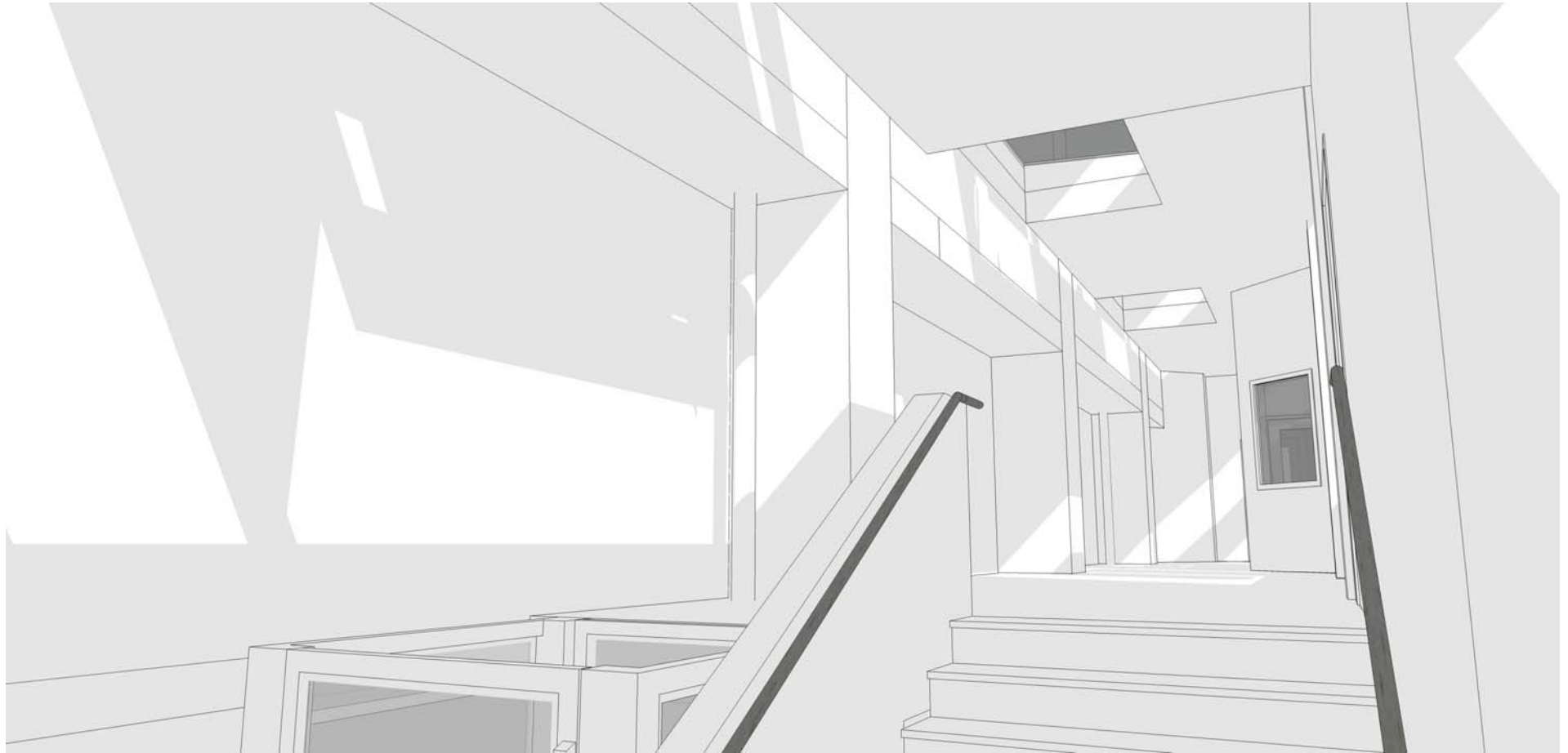


Image #2



Project # 201301

Accessible Entrance Addition  
and Modifications at  
St. Anthony Catholic Church  
1711 South 9<sup>th</sup> Street  
Milwaukee, WI





Image #3



Project # 201301

Accessible Entrance Addition  
and Modifications at  
St. Anthony Catholic Church  
1711 South 9<sup>th</sup> Street  
Milwaukee, WI





Image #4



Project # 201301

Accessible Entrance Addition  
and Modifications at  
St. Anthony Catholic Church  
1711 South 9<sup>th</sup> Street  
Milwaukee, WI

