



Certificate of Appropriateness

Milwaukee Historic Preservation Commission/200 E. Wells Street/Milwaukee, WI 53202/phone 414-286-5712/fax 414-286-3004

Property

500 N. WATER ST.

East Side Commercial Historic District

Description of work

The proposal is to install new signage for the Homewood Suites, a 94-room extended stay hotel. The signage will be located in four areas on the building.

Sign A is a 32'6" tall by 3'6" wide vertical cabinet sign that will have an aluminum face and push through vinyl letters with diffusers. It will measure 1'3" thick. It will be installed between floors three and five alongside the corner tower on the south elevation of the building.

Sign B consists of a 26' long by 1'3" tall by 5" thick aluminum illuminated wall sign with push through copy. It will be installed at the entrance to the drive up area along North Water Street.

Sign C consists of a 24' long by 2' tall aluminum cabinet sign with push through letters. It will be installed in the name plaque area above the parapet on the south side of the building. It will be set flush to the wall and have concealed fasteners.

Sign D will consist of a 9' long by 3' wide by 8" thick projecting cabinet wall sign with vinyl push through letters. It will be mounted to 3" square tubing painted black. It will be installed at the north end of the west elevation between window openings on the second story.

The signs are simple in design and reflect the established signage for the Homewood Suites. They are located to identify the hotel to traffic on I-794 and areas south as well as identify the building along Water Street.

Date issued

8/22/2016

PTS ID 104957 COA Signage Homewood Suites

In accordance with the provisions of Section 320-21 (11) and (12) of the Milwaukee Code of Ordinances, the Milwaukee Historic Preservation Commission has issued a certificate of appropriateness for the work listed above. The work was found to be consistent with preservation guidelines. The following conditions apply to this certificate of appropriateness:

All signs will follow the designs and locations and dimensions submitted.

Care should be taken to install signs at mortar joints to the extent possible to avoid damaging the brick. Likewise, care should be taken to avoid the red sandstone and terra cotta trim as these are costly to replace if cracked or damaged in the installation.

All work must be done in a craftsman-like manner, and must be completed within one year of the date this certificate was issued. Staff must approve any changes or additions to this certificate before work begins. Work that is not completed in accordance with this certificate may be subject to correction orders or citations. If you require technical assistance, please contact Carlen Hatala of the Historic Preservation staff as follows: Phone: (414) 286-5722 Fax: (414) 286-3004 E-mail: carlen.hatala@milwaukee.gov.

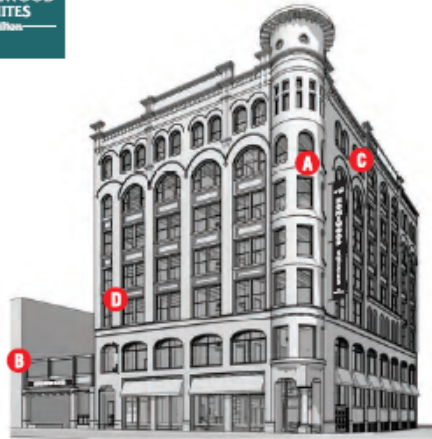
If permits are required, you are responsible for obtaining them from the Milwaukee Development Center. If you have questions about permit requirements, please consult the Development Center's web site, www.milwaukee.gov/build, or call (414) 286-8210.



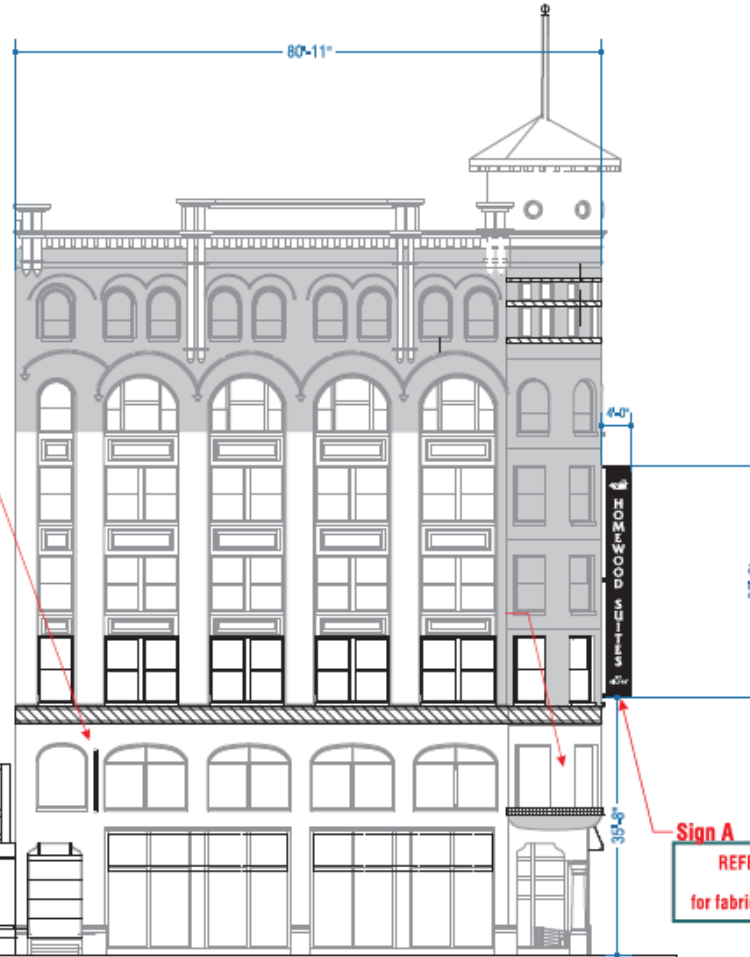
City of Milwaukee Historic Preservation Staff

Copies to: Development Center, Ald. Robert Bauman, Contractor , Inspector John Cunningham (286-2538)

SITE IDENTIFICATION



VIEW FACING NORTHEAST



WEST ELEVATION

SCALE: 1/16"=1'-0"

Milwaukee, WI

NOTE:
PRELIMINARY ONLY!!
SITE CONDITIONS
MAY REQUIRE
SPECIAL INSTALL/
MOUNTING.

SURVEY AND
ADDITIONAL
BUILDING DETAILS
REQUIRED
PRIOR TO MFG!!

Sign D
REFERENCE DRAWING
#B70977F
for fabrication & color details.

Sign B
REFERENCE DRAWING
#B70977D
for fabrication & color details.

Sign A
REFERENCE DRAWING
#B70977C
for fabrication & color details.



THIS IS AN ILLUSTRATION. PLEASE CONTACT US FOR THE EXACT LOCATION AND SIZE OF THE SIGN. WE WILL BE RESPONSIBLE FOR THE SIGN'S LOCATION AND SIZE. WE WILL NOT BE RESPONSIBLE FOR THE SIGN'S LOCATION AND SIZE. WE WILL NOT BE RESPONSIBLE FOR THE SIGN'S LOCATION AND SIZE.

585 Broad Street - Lincolnshire, IL 60069
PHONE: (847) 528-1235 FAX: (847) 528-1543
www.kieffersigns.com

CUSTOMER: Homewood Suites
LOCATION: Milwaukee, WI
SALESMAN: L. Jones
DESIGNER: MSD
DATE: 05/02/16

Artwork
 Design
 Survey
All items obtained to Order Only.



COMPANION FILES

PRODUCTION PROCESSING

Kieffer Item #	
Job #	
-001	
-002	
-003	
-004	

DATE: 6/27/16

INITIALS: MSD

REVISION: Rev (ins to cab w/ push thru

1	
2	
3	
4	
5	
6	
7	
8	
9	
10	
11	
12	
13	
14	
15	
16	
17	
18	
19	
20	

B70977

Sign Locations



SITE IDENTIFICATION



FOR AN ORIGINAL COPY OF THIS DRAWING, CONTACT THE PROJECT ARCHITECT OR KIEFFER SIGN CO.
THIS DRAWING IS THE PROPERTY OF KIEFFER SIGN CO., INC. IT IS NOT TO BE REPRODUCED, COPIED,
OR LOANED TO A 3RD PARTY WITHOUT THE WRITTEN PERMISSION OF KIEFFER SIGN CO., INC.

685 Grand Street - Lincolnshire, IL 60069
PHONE: (847) 528-1255 FAX: (847) 528-1548
www.kieffersigns.com

CUSTOMER: Homewood Suites
LOCATION: Milwaukee, WI
SALESMAN: L. Jones
DESIGNER: MSD
DATE: 05/02/16

Artwork
 Design
 Survey
 All items subject to Order Confirmation
UL LISTED
COMPANION FILES

PRODUCER PROCESSING
Kieffer Item # _____
Job # _____
-001 _____
-002 _____
-003 _____
-004 _____

INITIALS: DATE: 6/27/16
MSD MSD 7/8/16

REVISIONS:
1. Rev. firs to cab w/ gash thru
2. Reduce Sign C by 25%

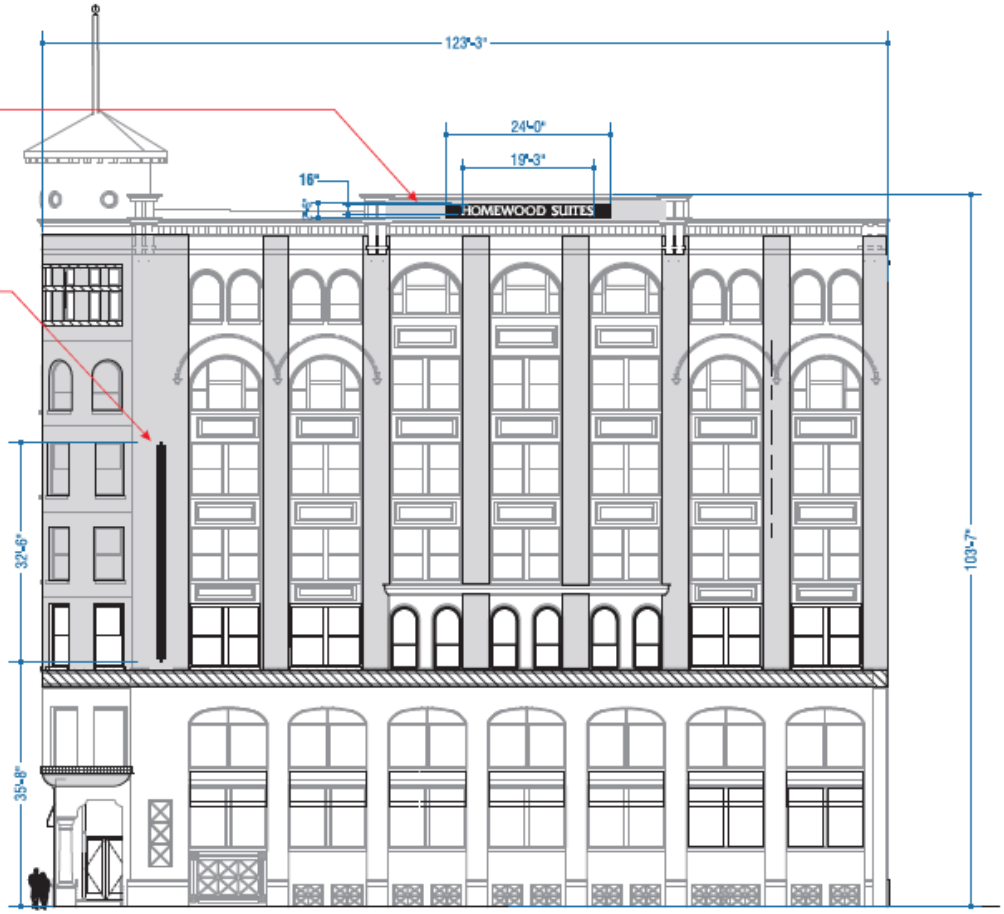
B70977A

Sign C
REFERENCE DRAWING
#B70977E
for fabrication & color details.

Sign A
REFERENCE DRAWING
#B70977C
for fabrication & color details.

NOTE:
PRELIMINARY ONLY!!
SITE CONDITIONS
MAY REQUIRE
SPECIAL INSTALL/
MOUNTING.

SURVEY AND
ADDITIONAL
BUILDING DETAILS
REQUIRED
PRIOR TO MFG!!



SOUTH ELEVATION

SCALE: 1/16"=1'-0"

Milwaukee, WI



SITE IDENTIFICATION



Sign D
REFERENCE DRAWING #B70977F
for fabrication & color details.

NOTE:
PRELIMINARY ONLY!!
SITE CONDITIONS
MAY REQUIRE
SPECIAL INSTALL/
MOUNTING.

SURVEY AND
ADDITIONAL
BUILDING DETAILS
REQUIRED
PRIOR TO MFG!!

SCALE: 1/16"=1'-0"

Milwaukee, WI



THIS IS AN ILLUSTRATION AND SHOULD BE USED ONLY AS A GUIDE FOR INFORMATION. IT DOES NOT REPRESENT A CONTRACT. THE CONTRACTOR SHALL BE RESPONSIBLE FOR OBTAINING ALL NECESSARY PERMITS AND APPROVALS FROM THE LOCAL AUTHORITIES. THE CONTRACTOR SHALL BE RESPONSIBLE FOR OBTAINING ALL NECESSARY PERMITS AND APPROVALS FROM THE LOCAL AUTHORITIES.

3000 W. Industrial Ave., Mequon, WI 53091
 600 Bond Street - Livonia, MI 48150
 PHONE: (847) 528-1255 FAX: (847) 528-1543
www.kieffersigns.com

CUSTOMER: Homewood Suites
 LOCATION: Milwaukee, WI
 SALESMAN: J. Jones
 DESIGNER: MSD
 DATE: 05/02/16

Artwork
 Design
 Survey
All items obtained to other order
UL LISTED
 COMPANION FILES

PRODUCTION PROCESSING

Kieffer Item # _____
 Job # _____
 -001 _____
 -002 _____
 -003 _____
 -004 _____

REVISIONS: DATE: _____
 INITIALS: _____
 MSD 6/27/16

1	2	3	4	5	6	7	8	9	10	11	12	13	14	15	16	17	18	19	20
---	---	---	---	---	---	---	---	---	----	----	----	----	----	----	----	----	----	----	----

REVISION: **Rev. fits to cab w/ push thru**

B70977B



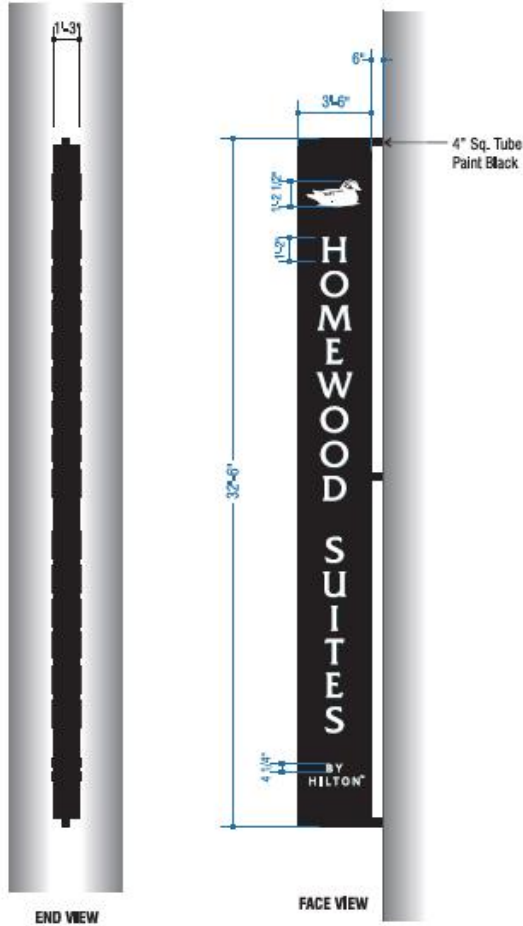
CUSTOM D/F Internally Illuminated Projecting Wall Sign w/ Push Thru Letters

Sign A

D/F Internally Illuminated Projecting Wall Sign

FABRICATED D/F SIGN CABINET, ALUMINUM FACE & FILLER, PAINTED BLACK (SATIN FINISH).

3/16" = 1'-0"



DUCK LOGO:
PUSH THRU CLEAR ACRYLIC (3/4" EXPOSED)
WHITE TRANS. VINYL FIRST SURFACE / DIFFUSER SECOND SURFACE
BLACK VINYL DETAILS ON FACE

HOMWOOD SUITES:
COPY: PUSH THRU CLEAR ACRYLIC (3/4" EXPOSED)
WHITE TRANS. VINYL FIRST SURFACE / DIFFUSER SECOND SURFACE

BY HILTON: 3/4" (1/2" EXPOSED) PUSH THRU COPY WHITE ACRYLIC/ OPAQUE FACE
TM: (NON-ILLUM) WHITE VINYL APPLIED TO SIGN FACE

COLOR SPECIFICATIONS

VINYL SPECIFICATIONS

- (W) Translucent White
- (VR) Diffuser

PAINT SPECIFICATIONS

- (P) Black (Satin Finish)



RIGHT VIEW



VIEW FACING NORTHEAST

ENGINEERING & ATTACHMENT PER SITE CONDITIONS

Milwaukee, WI



FOR A LIST OF OTHER PRODUCTS VISIT US AT WWW.KIEFFER.COM

1200 W. WISCONSIN STREET, MILWAUKEE, WI 53233

505 East Street - Lincolnshire, IL 60069

PHONE: (847) 928-1200 FAX: (847) 928-1943

www.kieffersigns.com

CUSTOMER: Homewood Suites

LOCATION: Milwaukee, WI

SALESMAN: J. Jones

DESIGNER: MSD

DATE: 05/02/16

Artwork

Design

Survey

All items checked to Order



COMPANION FILES

PRODUCTION PROCESSING

Kieffer Item #

Job #

-001

-002

-003

-004

INITIALS:

DATE: 6/27/16

MSD

REVISION:

Rev #

Rev #

Rev #

Rev #

Rev #

Rev #

Rev #

Rev #

Rev #

Rev #

Rev #

Rev #

Rev #

Rev #

Rev #

Rev #

Rev #

Rev #

Rev #

Rev #

Rev #

Rev #

Rev #

Rev #

Rev #

Rev #

Rev #

Rev #

Rev #

Rev #

Rev #

Rev #

Rev #

Rev #

Rev #

Rev #

Rev #

Rev #

B70977C



S/F Illuminated Wall Sign w/ Push Thru Copy

Sign B



S/F ILLUMINATED WALL SIGN W/ PUSH THRU COPY

3/8" = 1'-0"

- ALUMINUM SIGN FACES & CABINET.
- PAIN'T BLACK (SATIN FINISH)
- COPY: PUSH THRU CLEAR ACRYLIC (3/4" EXPOSED)
- WHITE TRANS. VINYL FIRST SURFACE / DIFFUSER SECOND SURFACE
- WHITE LED ILLUMINATION
- WALL MOUNT FLUSH TO BRICK WALL W/ CONCEALED FASTENERS

COLOR SPECIFICATIONS

VINYL SPECIFICATIONS

Translucent White

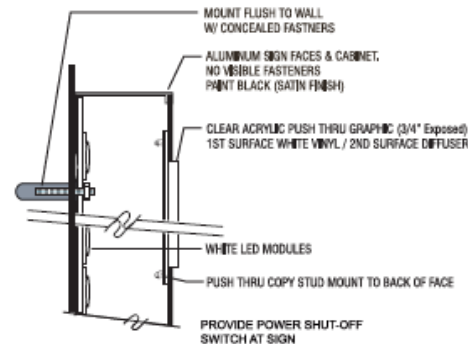
Diffuser

PAINT SPECIFICATIONS

Black (Satin Finish)



NIGHT VIEW



SECTION DETAIL



THIS IS AN ORIGINAL UNREVISED WORKING DRAWING. CONTACT THE P.O. BOX INDICATED WITH A PROPERLY FORMED CLAIM FOR THIS DRAWING TO BE REPRODUCED, COPIED OR OTHERWISE USED IN ANY MANNER WITHOUT THE WRITTEN PERMISSION OF KIEFFER & CO., INC.

© 2016 KIEFFER & CO., INC.
585 Bond Street - Lincolnshire, IL 60069
PHONE: (847) 528-1255 FAX: (847) 528-1543
www.kieffersigns.com

CUSTOMER: Homewood Suites
LOCATION: Milwaukee, WI
SALESMAN: L. Jones
DESIGNER: MSO
DATE: 05 / 02 / 16



COMPANION FILES

PRODUCTION PROCESSING
Kieffer Item # _____
Job # _____
-001 _____
-002 _____
-003 _____
-004 _____

REVISION:	DATE:	INITIALS:	DATE:	INITIALS:	DATE:	INITIALS:	DATE:	INITIALS:	DATE:	INITIALS:	DATE:	INITIALS:	DATE:	INITIALS:	DATE:	INITIALS:	DATE:	INITIALS:	DATE:	
▲ Rev. Refs to cab w/ push thru	6/27/16	MSO	7/8/16	MSO																
▲ Revise Sign C by 25%																				

B70977D

Milwaukee, WI



S/F Illuminated Wall Sign w/ Push Thru Copy
Sign C



S/F ILLUMINATED WALL SIGN W/ PUSH THRU COPY

3/8" = 1'-0"

- ALUMINUM SIGN FACES & CABINET
- PAINT BLACK (SATIN FINISH)
- COPY: PUSH THRU CLEAR ACRYLIC (3/4" EXPOSED)
- WHITE TRANS. VINYL FIRST SURFACE / DIFFUSER SECOND SURFACE
- WHITE LED ILLUMINATION
- WALL MOUNT FLUSH TO BRICK WALL W/ CONCEALED FASTENERS

COLOR SPECIFICATIONS

VINYL SPECIFICATIONS

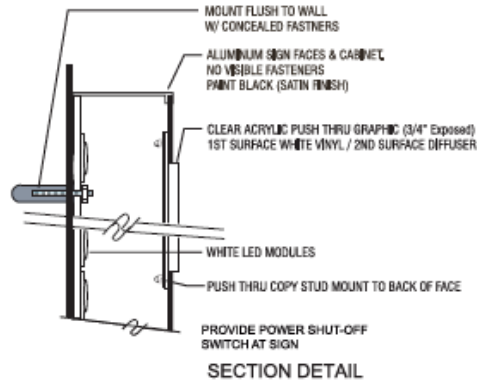
- Translucent White
- Diffuser

PAINT SPECIFICATIONS

- Black (Satin Finish)



NIGHT VIEW



SECTION DETAIL

Milwaukee, WI



THIS IS AN ORIGINAL REPRESENTATION OF THE SIGN. IT IS NOT TO BE REPRODUCED OR COPIED IN ANY MANNER WITHOUT THE WRITTEN PERMISSION OF KIEFFER & CO., INC.

680 Bond Street - Lincolnshire, IL 60069
 PHONE: (847) 526-1200 FAX: (847) 526-1548
www.kieffersigns.com

CUSTOMER: Homewood Suites
 LOCATION: Milwaukee, WI
 SALESMAN: J. Jones
 DESIGNER: MSD
 DATE: 05/02/16

Artwork
 Design
 Survey
All items checked to Order Color



COMPANION FILES

PRODUCTION PROCESSING

Kieffer Item # _____
 Job # _____
 -001 _____
 -002 _____
 -003 _____
 -004 _____

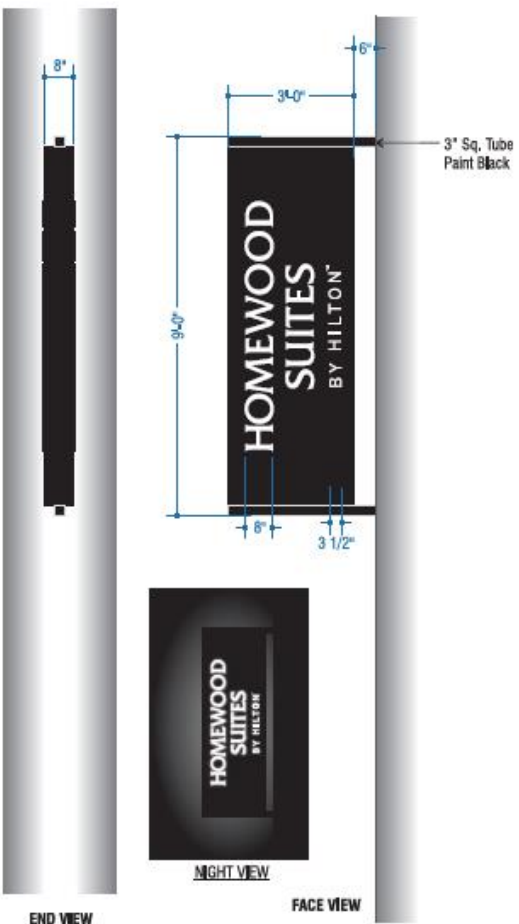
REVISION:	DATE:	INITIALS:	DESCRIPTION
1	5/27/16	MSD	Revise Sign C by 25%
2	7/8/16	MSD	
3			
4			
5			
6			
7			
8			
9			
10			
11			
12			
13			
14			
15			
16			
17			
18			
19			
20			

B70977E



CUSTOM D/F Internally Illuminated Projecting Wall Sign w/ Push Thru Letters

Sign D



D/F Internally Illuminated Projecting Wall Sign

3/8" = 1'-0"

FABRICATED D/F SIGN CABINET, ALUMINUM FACE & FILLER,
PAINTED BLACK (SATIN FINISH).

HOMWOOD SUITES:

ROUTED PUSH THRU COPY,
1" (3/4" EXPOSED) CLEAR ACRYLIC
WHITE TRANS VINYL FIRST SURFACE / DIFFUSER SECOND SURFACE

BY HILTON: 3/4" (1/2" EXPOSED) PUSH THRU COPY, CLEAR ACRYLIC
WHITE TRANS VINYL FIRST SURFACE / DIFFUSER SECOND SURFACE
TM (NON-ILLUM) WHITE VINYL APPLIED TO SIGN FACE

WHITE LED ILLUMINATION

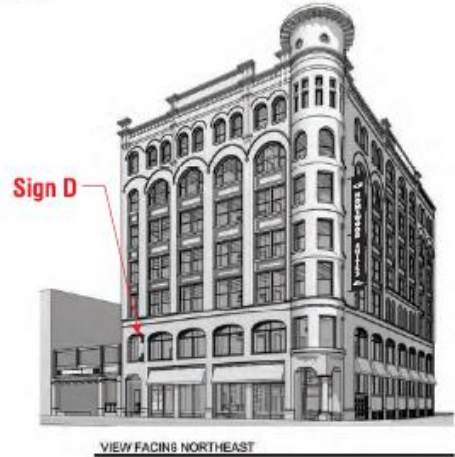
COLOR SPECIFICATIONS

VINYL SPECIFICATIONS

- (V1) Translucent White
- (V2) Diffuser

PAINT SPECIFICATIONS

- (P1) Black (Satin Finish)



ENGINEERING & ATTACHMENT PER SITE CONDITIONS

Milwaukee, WI



THE 100% ORIGINAL KIEFFER SIGNING SYSTEMS HAS BEEN REDESIGNED WITH A
PROFITABLE DESIGN PLAN FOR THE FUTURE. SEE US TODAY TO DISCUSS THE NEW
DESIGN TO MEET YOUR NEEDS FOR THE FUTURE OF SIGNAGE. SEE US TODAY.

595 Bond Street - Lincolnshire, IL 60069
PHONE: (847) 526-1295 FAX: (847) 526-1540
www.kieffersigns.com

CUSTOMER: Homewood Suites
LOCATION: Milwaukee, WI
SALESMAN: J. Jones
DESIGNER: MSD
DATE: 05/02/16

Artwork
 Design
 Survey
(All Items subject to Order)

UL LISTED

COMPANION FILES

PRODUCTION PROCESSING

Kieffer Item # _____

Job # _____

-001	_____
-002	_____
-003	_____
-004	_____

INITIALS: DATE: _____
MSD 6/27/16

REVISION: _____

Rev. # _____

1	_____
2	_____
3	_____
4	_____
5	_____
6	_____
7	_____
8	_____
9	_____
10	_____
11	_____
12	_____
13	_____
14	_____
15	_____
16	_____
17	_____
18	_____
19	_____
20	_____

B70977D