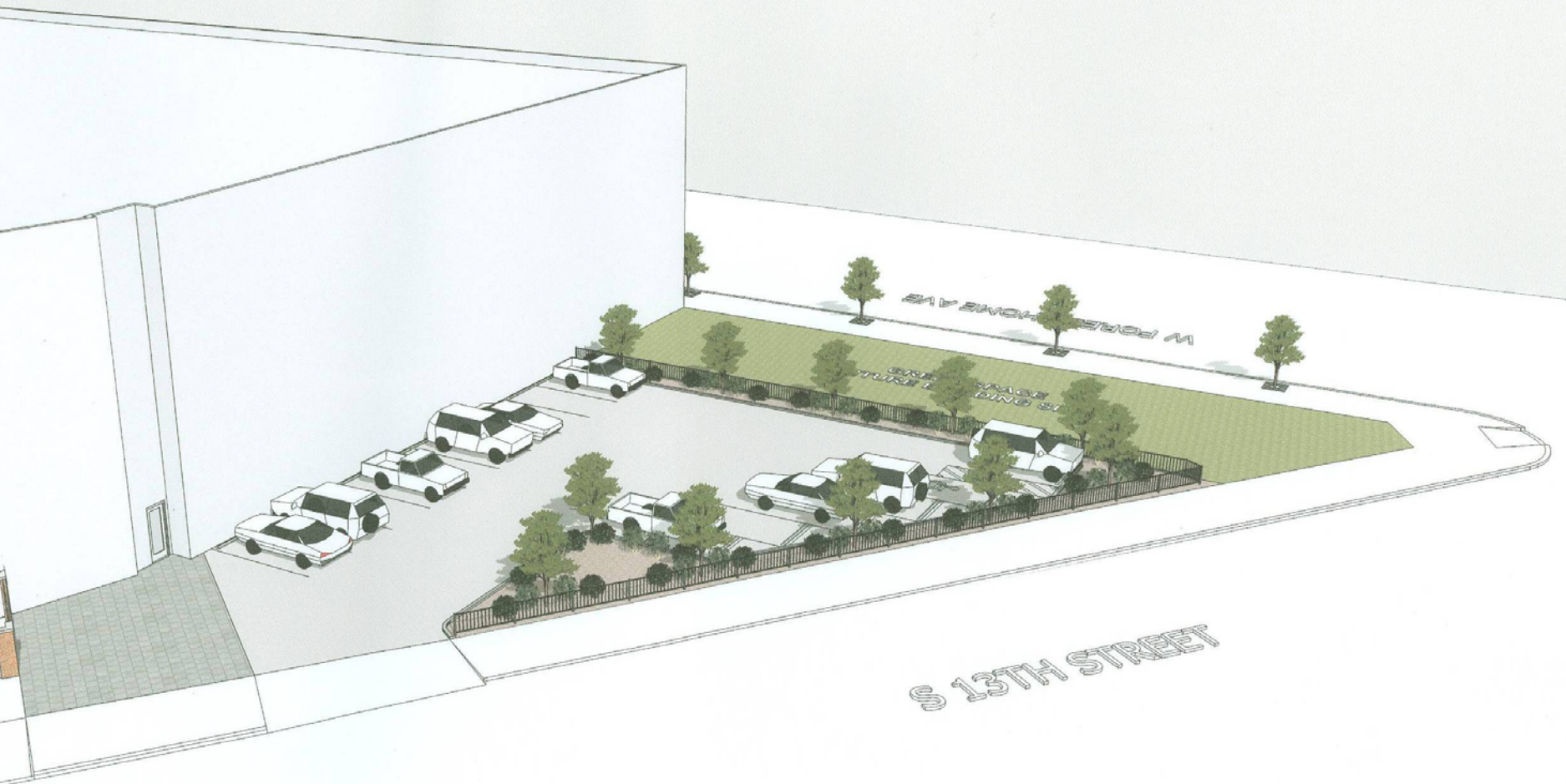


1301 W. Forest
Home

Parking lot

**Mitchell Street
Historic District**





S 13TH STREET

W PARKER HOME AVE

STAGE LIGHTS

S 13TH STREET

GREEN SPACE
(FUTURE BUILDING SITE)

W FOREST HOME AVE

West



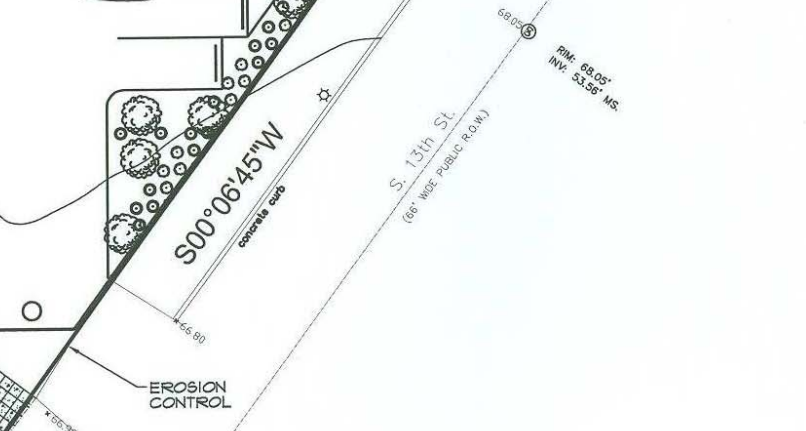
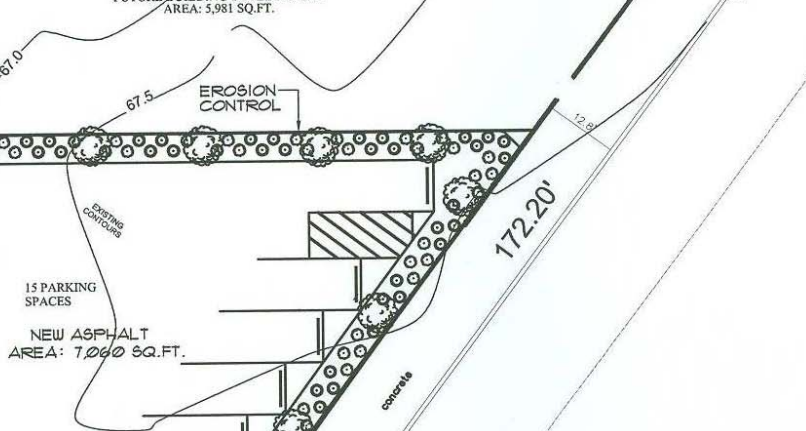
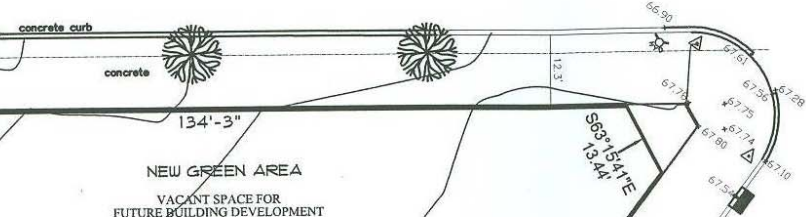
W. FOREST HOME AVE.

(PEDESTRIAN MALL - 66" WIDE PUBLIC R.O.W.)

RM: 68.43'
INV: 54.04' MS
⑤ 65.43

RM: 65.26'
INV: PLUGGED

66.90

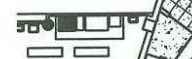


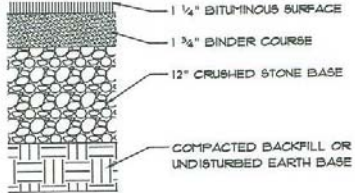
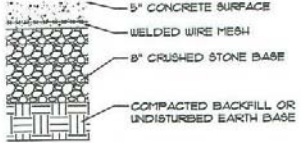
S. 13th St.
(66" WIDE PUBLIC R.O.W.)

RM: 68.05'
INV: 53.56' MS

RM: 67.37'
INV: 52.86' MS
⑤ 67.37

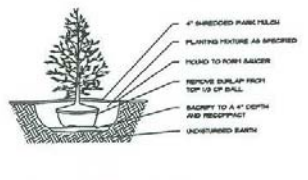
RM: 66.12'



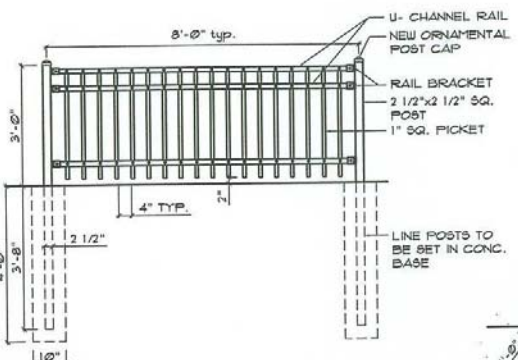


10 TYP. CONC. DETAL
A-1 Scale: N.T.S.

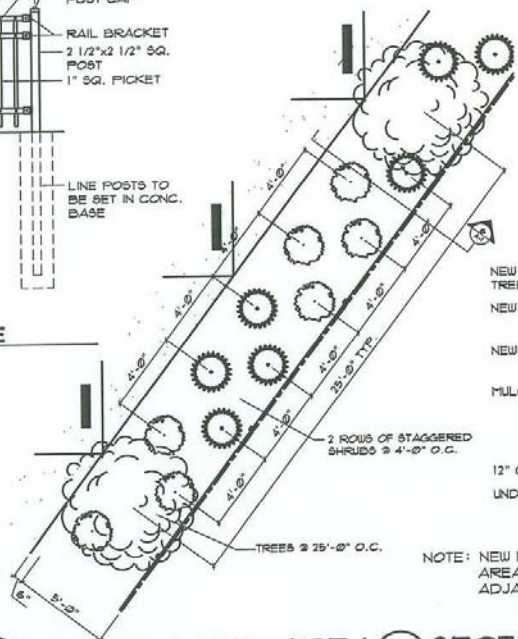
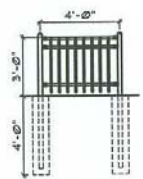
2 TYP. ASPHALT DETAL
A-1 Scale: N.T.S.



4 TYP. PLANTING DETAIL
A-1 Scale: N.T.S.



5 TYP. IRON FENCE
A-1 Scale: 1/2" = 1'-0"



- NEW DECIDUOUS TREES
- NEW 3'-0" IRON FENCE
- NEW SHRUBS
- MULCH
- 12" CRUSHED STONE
- UNDISTURBED EARTH

NOTE: NEW LANDSCAPE AREAS TO BE BELOW ADJACENT HARD SURFACES

10 FENCE ELEVATION
A-1 Scale: 1/4" = 1'-0"

10 LANDSCAPING AREA
A-1 Scale: 1/4" = 1'-0"

6 SECTION THRU LANDSCAPING AREA
A-1 Scale: 1/2" = 1'-0"

