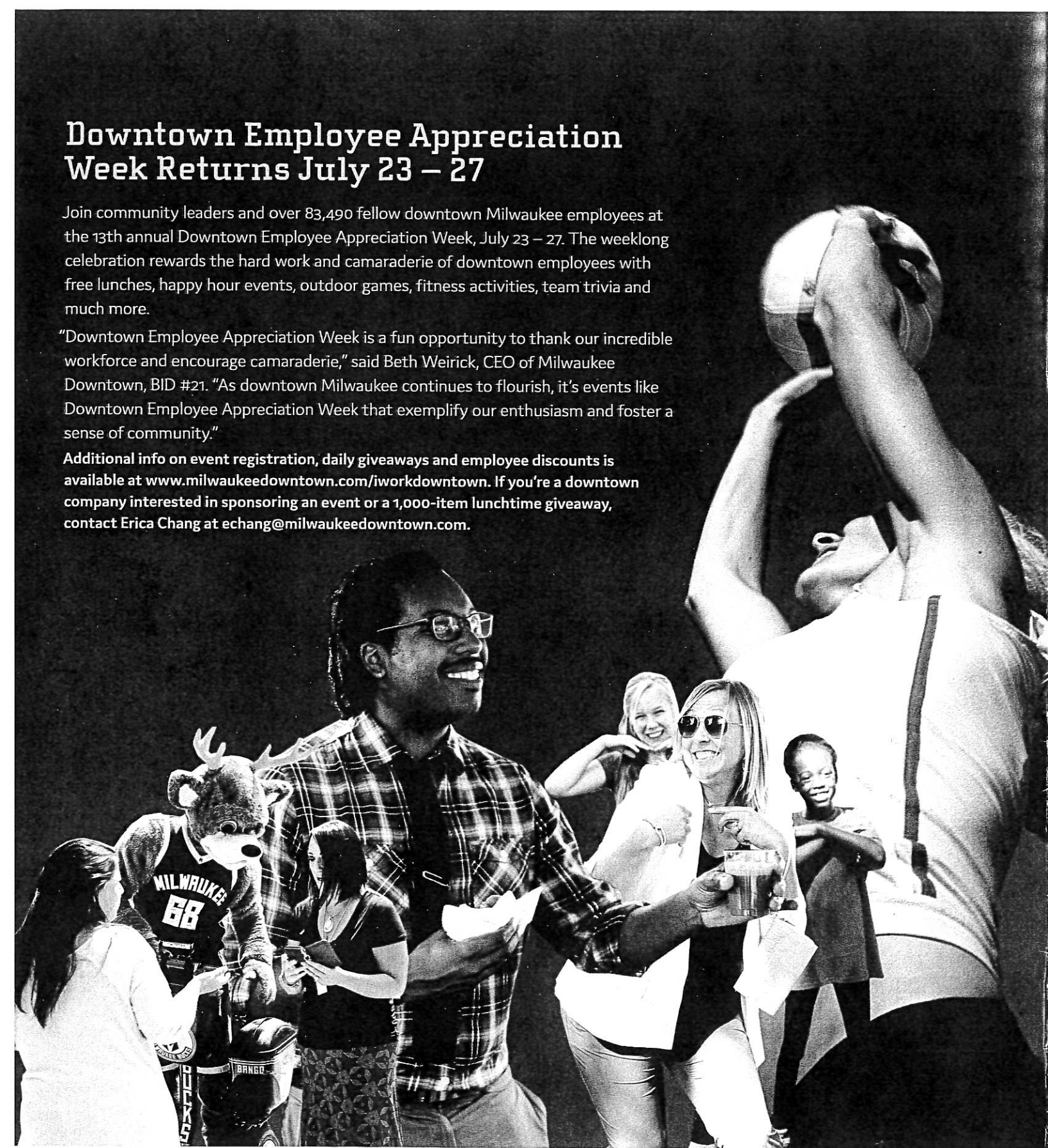


## Downtown Employee Appreciation Week Returns July 23 – 27

Join community leaders and over 83,490 fellow downtown Milwaukee employees at the 13th annual Downtown Employee Appreciation Week, July 23 – 27. The weeklong celebration rewards the hard work and camaraderie of downtown employees with free lunches, happy hour events, outdoor games, fitness activities, team trivia and much more.

“Downtown Employee Appreciation Week is a fun opportunity to thank our incredible workforce and encourage camaraderie,” said Beth Weirick, CEO of Milwaukee Downtown, BID #21. “As downtown Milwaukee continues to flourish, it’s events like Downtown Employee Appreciation Week that exemplify our enthusiasm and foster a sense of community.”

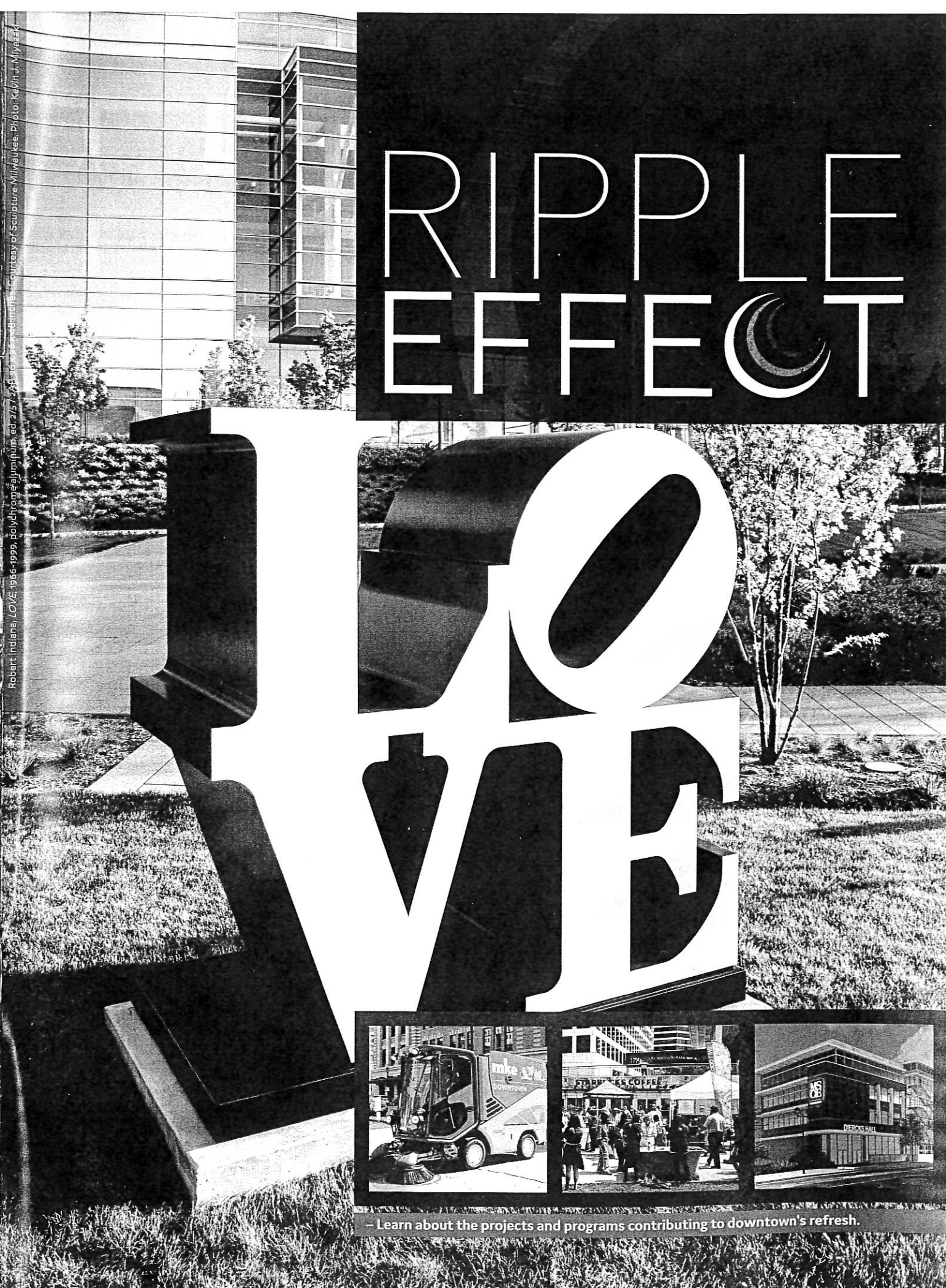
Additional info on event registration, daily giveaways and employee discounts is available at [www.milwaukeedowntown.com/iworkdowntown](http://www.milwaukeedowntown.com/iworkdowntown). If you’re a downtown company interested in sponsoring an event or a 1,000-item lunchtime giveaway, contact Erica Chang at [echang@milwaukeedowntown.com](mailto:echang@milwaukeedowntown.com).



Milwaukee Downtown, BID #21 - 600 East Wells Street - Milwaukee, WI 53202  
414.220.4700 - [MilwaukeeDowntown.com](http://MilwaukeeDowntown.com)



# RIPPLE EFFECT



— Learn about the projects and programs contributing to downtown's refresh.

# State of the Art: Sculpture Milwaukee Returns to Downtown This Summer



Sculpture Milwaukee, the free outdoor urban sculpture experience that transformed Wisconsin Avenue with its debut in 2017, has returned to the Avenue. Featuring new works by 22 internationally, nationally and locally renowned artists, the installation will line Wisconsin Avenue from the Lakefront to 6th Street now through October 21, 2018.

In its second year, Sculpture Milwaukee continues to highlight artists who represent a broad range of generations, working practices, materials and styles. Russell Bowman, an art advisor based in Chicago and former director of the Milwaukee Art Museum, and Marilu Knode, Sculpture Milwaukee's project director and former director of Laumeier Sculpture Park in St. Louis, curated the works from some of the world's foremost galleries. The pieces have been installed outside for an immersive, inclusive urban experience. From art connoisseurs and collectors, to school children and office workers, the intent is to spark imaginations and activate Wisconsin Avenue.

"We're excited to once again make world-class art accessible to the Milwaukee community

and beyond," said Russell Bowman, art advisor to Sculpture Milwaukee. "This year's featured artists represent a broad scope of styles and practices, ranging from abstract to figurative, combined with both older craft processes and more modern computer-aided techniques. We look forward to engaging the community with programs and events around this new installation of public art."

An extensive range of tours, hands-on workshops and additional avenue activation activities will be held throughout the summer and fall. Public and private trolley tours, and walking tours through the Milwaukee Art Museum; free monthly lectures by Sculpture Milwaukee artists, as well as area art curators, fabricators and arts experts; plus free lunchtime events are among the experiences on the docket.

"Sculpture Milwaukee is an all-access, all-season opportunity to view some of the finest art in the world," said Steve Marcus, founder of Sculpture Milwaukee and chairman of the board of The Marcus Corporation. "Thanks to the support of our donors and Milwaukee businesses, we are delighted to share this gift with the community and drive business along the Avenue through activation events."

Much of the artwork on display is available for purchase. If you're interested in owning one of the world-class sculptures in the 2018 season, please visit [www.sculpturemilwaukee.com/purchase](http://www.sculpturemilwaukee.com/purchase). Additional info on Sculpture Milwaukee 2018 can be found at [www.sculpturemilwaukee.com](http://www.sculpturemilwaukee.com).



Erwin Wurm - *Half Big Suit*, 2016  
Photo: Kevin J. Miyazaki

Sanford Biggers - *BAM (Seated Warrior)*, 2017  
Photo: Kevin J. Miyazaki

The 2018 Sculpture Milwaukee installation includes:

MAGDALENA ABAKANOWICZ - *The Group of Five*, 2014

GHADA AMER - *Blue Bra Girls*, 2012

SANFORD BIGGERS - *BAM (Seated Warrior)*, 2017

YOAN CAPOTE - *Nostalgia*, 2013

RICHARD DEACON - *Big Time*, 2016

TOM FRIEDMAN - *Hazmat Love*, 2017

LIZ GLYNN - *Untitled (Burgher with extended arm)*, 2014

JOHN HENRY - *Zach's Tower*, 2007

GARY HUME - *Bud (bronze)*, 2016

JESSICA JACKSON HUTCHINS - *Reason to Be*, 2017

ROBERT INDIANA - *LOVE*, 1966-1999

MEL KENDRICK - *Marker #2*, 2009

SOL LEWITT - *Tower (Gubbio)*, 1996

SHANA MCCAOW & BRENT BUDSBERG - *Skew*, 2018

ANA PRVAČKI - *Stealing Shadows, Michelangelo*, 2007

KIKI SMITH - *Seer (Alice II)*, 2005

BOSCO SODI - *Untitled*, 2017

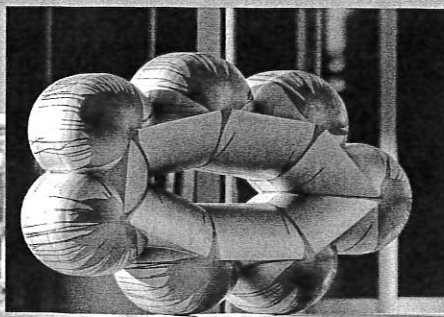
TONY TASSET - *Mood Sculpture*, 2017

HANK WILLIS THOMAS - *Liberty*, 2015

BERNAR VENET - *97.5° Arc x 9*, 2007

ERWIN WURM - *Half Big Suit*, 2016

Richard Deacon - *Big Time*, 2016, Photo: Kevin J. Miyazaki



Bernar Venet - *97.5° Arc x 9*, 2007, Photo: Kevin J. Miyazaki



## Lasting Impacts

While Sculpture Milwaukee has put downtown Milwaukee on an international art platform, its local impact is everlasting. This spring, an anonymous donor of the Greater Milwaukee Foundation provided a grant to Milwaukee Downtown to acquire Tony Cragg's *Mixed Feelings*, 2012, a piece from Sculpture Milwaukee 2017. The work was gifted to the City of Milwaukee and installed outside City Hall at the end of April, demonstrating that the legacy of public art in Milwaukee will carry on in perpetuity.

"On behalf of the residents of the City of Milwaukee, I am happy to accept this donation of the *Mixed Feelings* sculpture created by world-renowned artist Tony Cragg," said Milwaukee Mayor Tom Barrett. "*Mixed Feelings* was part of last year's Sculpture Milwaukee public art display in downtown Milwaukee, and I am pleased that through the generosity of a local anonymous donor, this sculpture will continue to inspire and provide beauty when it comes to live at City Hall."

Sculpture Milwaukee 2018 officially opened to the public on June 1. Many of the works are available for purchase with a percentage of each sale going toward Sculpture Milwaukee's future installations.

Sculpture Milwaukee 2018 is brought to Wisconsin Avenue by this year's presenting sponsor, Northwestern Mutual.

## MSOE Advances the Frontier of Technology Careers



### Milwaukee Among Top 20 U.S. Cities in Tech Jobs for Women

In a recent study conducted by SmartAsset, Milwaukee has been ranked one of the top 20 cities in the United States for tech jobs for women. The study found that tech jobs for women are often underrepresented in tech-based occupations. However, in the nation, Milwaukee collectively makes up over 2 percent above the national average, with 27.8 percent of the area's tech jobs filled by women.

Milwaukee School of Engineering (MSOE) is continuing to push Milwaukee's tech ecosystem forward with new programs in artificial intelligence education, deep learning, cyber security, robotics and cloud computing.

In April, MSOE broke ground on a new academic facility, thanks to a generous \$34 million donation from MSOE Regent and alumnus Dr. Dwight Diercks and his wife, Dian. The Dwight and Dian Diercks Computational Science Hall, located at 1025 N. Milwaukee St., and its new Bachelor of Science in Computer Science program will position MSOE as a national educational leader in this transformative technology space.

"MSOE will set the standard for preparing leaders to solve the diverse technical challenges of the 21st century," said Dr. John Walz, MSOE president. "There is no doubt that this facility, along with the educational program and partnerships that result from it, will put us well on the way to reaching that vision."

In recent years, the technology industry has exploded in the area of artificial intelligence. Autonomous vehicles, facial recognition and voice command platforms like Siri and Alexa are just a few of the advancements that fall within this domain.

With this rapid growth comes a need for new talent. Specialists in the artificial intelligence field can earn upwards of \$300,000 per year. Given the new curriculum and modern facilities, MSOE hopes to deepen and enhance the current disciplines of study to not only attract more students, but also to build upon MSOE's legacy of excellence.

"This new facility is not only an investment into MSOE, it is an investment in our state's future that will help develop our workforce while opening new doors for businesses throughout Wisconsin and the Midwest," said Governor Scott Walker.



**"MSOE will set the standard for preparing leaders to solve the diverse technical challenges of the 21st century."**

— DR. JOHN WALZ, MSOE PRESIDENT

The Dwight and Dian Diercks Computational Science Hall is expected to be completed in 2019, while classes for the new program will begin fall 2018. Upon completion, the facility will total four floors and 64,000 square feet with 13 innovative teaching labs, nine offices and workspaces for both corporate and academic partnerships, and 18,000 square feet of underground parking. Diercks Hall will also be home to a state-of-the-art data center, which will house a GPU-accelerated supercomputer to be used by students and other industry members.

Diercks earned his bachelor's degree in computer science and engineering at MSOE in 1990. He also holds an Honorary Doctor of Engineering degree from the university. Today, Diercks serves as senior vice president at NVIDIA – a California-based technology company and global leader in AI, supercomputing and visual computing.

Conceptual photos and more information on this catalytic project can be found at [www.msoe.edu/diercks-hall/](http://www.msoe.edu/diercks-hall/).

## Horse Patrol Saddles into a New Home

Ground is expected to break soon on Milwaukee Urban Stables – the new equestrian center for the Milwaukee Police Department's Mounted Horse Patrol (MPD), offering equine-assisted therapy and police/community relations programming. The center will be built on the corner of First Street and Lincoln Avenue on a four-acre city-owned lot. Transfer of the property from the Redevelopment Authority of the City of Milwaukee (RACM) to Milwaukee Urban Stables will take place this summer with the approval of the \$1.00 purchase price for the land.

The complex will feature 24 horse stalls, indoor riding areas, and a community room for local school programs, community programs and neighborhood events. Half of the stalls will be used for the horse patrol unit and the other 12 will be used for therapy programs. This increase in stable space will grow the department from eight to 12 mounts and allow the MPD to manage both day and evening shifts.

The MPD unit is currently housed in Racine County. Milwaukee Urban Stables will allow easy access for volunteers and program attendees, while reducing transport time

**"It's a collaborative effort that benefits public safety, builds community partnerships, and engages a wide range of city residents in positive activity."**

— Milwaukee Mayor Tom Barrett

and stress to the stallions of the MPD. Milwaukee has been using horse patrols to focus on community interaction and crowd control at many of Milwaukee's festivals and other events since the program's rebirth in 1999.

"It's a collaborative effort that benefits public safety, builds community partnerships, and engages a wide range of city residents in positive activity," said Milwaukee Mayor Tom Barrett. "I appreciate the efforts of all the civic-minded individuals who are supporting this project."

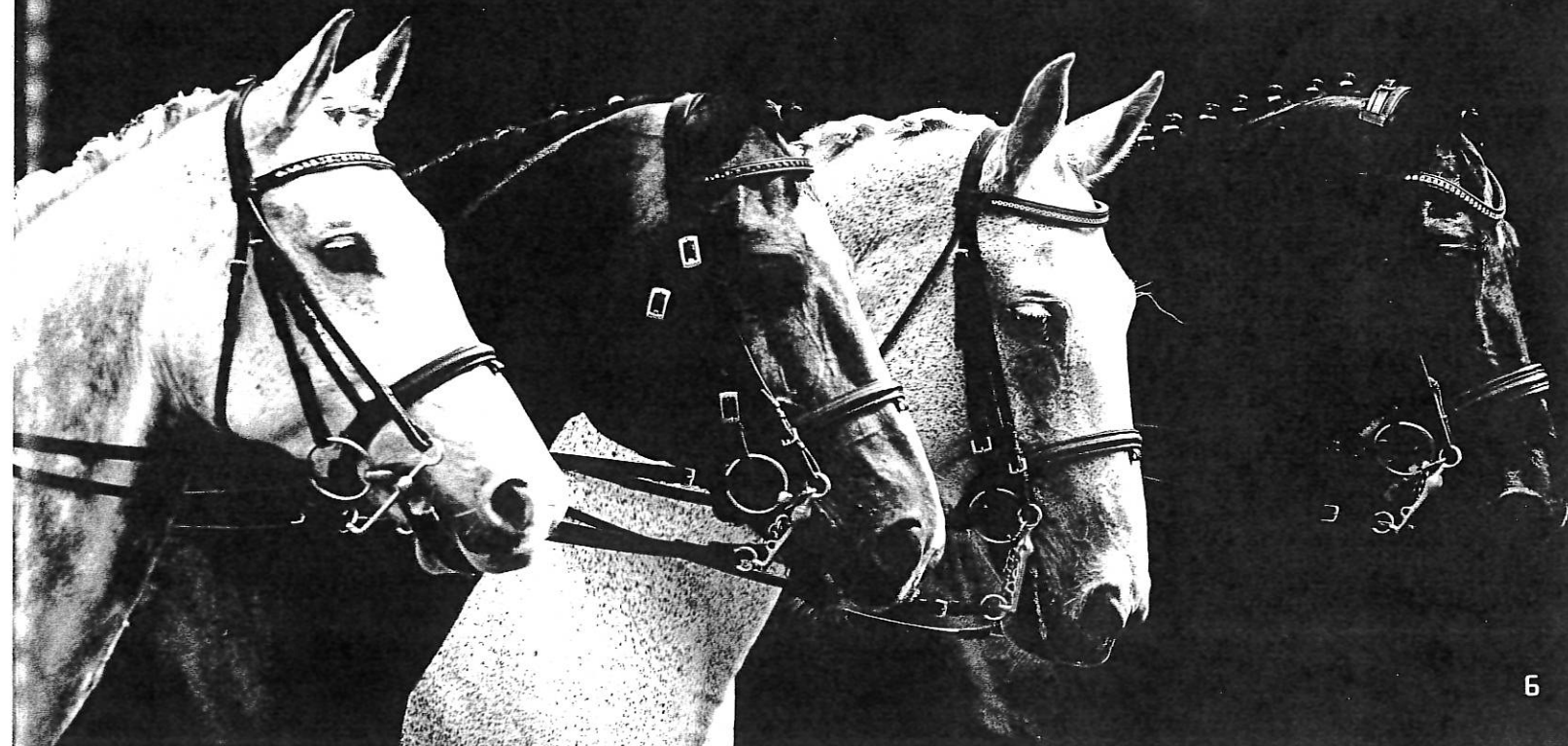
The steering committee of Milwaukee Urban Stables also plans to host a variety of therapy programs. Populations served could include at-risk youth, individuals with physical disabilities, as well as veterans with post-traumatic stress disorder.

Equine-assisted therapy, which includes mounted and unmounted activities, is proven to build confidence in participants,

as well as improve an individual's overall wellbeing. The rhythm a rider experiences while on a horse is similar to walking, which helps the rider build both muscle and confidence.

This unique method of therapy has also been shown to improve coordination, balance, posture and flexibility.

Milwaukee Urban Stables is expected to cost \$5.2 million. To date, organizers have already raised approximately 90 percent of their \$4.5 million fundraising goal. Construction of the new facility is expected to take approximately one year and could begin as early as this fall.





Architectural rendering of the new Sherman Phoenix market hall.

## Sherman Phoenix Rises: Neighborhood Development Promotes Unity and Opportunity

More than 20 small businesses have signed Letters of Intent for the multi-tenant market being built in the fire-damaged BMO Harris Bank building in the Sherman Park neighborhood. Set ablaze in 2016 following civil unrest, community members are rising above the ashes to breathe new life into the space.

Appropriately named the Sherman Phoenix, the building will be transformed into a food hall and wellness center that supports small businesses owned primarily by people of color. It will also create community spaces for residents of the Sherman Park neighborhood to attend art exhibits, film showings and other cultural events.

In addition, tenants who sign on will receive mentorship and coaching opportunities to help them grow and sustain their businesses. The development is also projected to provide more than 75 new jobs to members of the Sherman Park neighborhood.

Juli Kaufmann, president of Fix Development, and Joanne Sabir, co-owner of The Juice Kitchen, are co-leading the charge to raise this phoenix. Of the \$4 million necessary to finance the Sherman Phoenix, only \$500,000 remains to be raised.



Sherman Phoenix project team.

The pair has been resourceful and unconventional in the fundraising process, appealing to philanthropists and utilizing a combination of angel and crowd investors, as well as a grant from the Wisconsin Economic Development Corporation and TIF funding from the City of Milwaukee. Kaufmann and Sabir have spent much of the project emphasizing local control and ownership of the space. Currently, the spaces boasts 55 community owners. The 20,000-square-foot space is set to open this fall.

For more information or to donate, visit [www.shermanphoenix.com](http://www.shermanphoenix.com).

Among the entrepreneurs committed to the project are these food options:

- Buffalo Boss
- Confectionately Yours
- Funky Fresh Spring Rolls
- Lush Popcorn
- Next Level Vegan
- Purple Door Ice Cream
- Sauce & Spice Pizza
- Shindig Coffee

Offering cultural options:

- 2 King Barbershop
- Hello Beautiful Make-up Artistry
- None Above Custom Shoes
- Nails by Theresa Landgon
- Queens Closet Women Consignment
- Rhoyal Trinity Locs
- Silver Talisman Jewelers
- So Greedy Events

Providing wellness options:

- Vibez Creative Art Space and Paint & Sip Lounge
- Embody Yoga
- Hands at Home
- Honeybee and Sage Apothecary
- Sabir's Karate
- Studio 1969 Martial Arts Studio and Amri Counseling



# MKE BLUEPRINT



Downtown Milwaukee's Changing Landscape

Summer 2018

Milwaukee Downtown, BID #21 | 414.220.4700 | MilwaukeeDowntown.com

## What's Brewing at The Brewery?

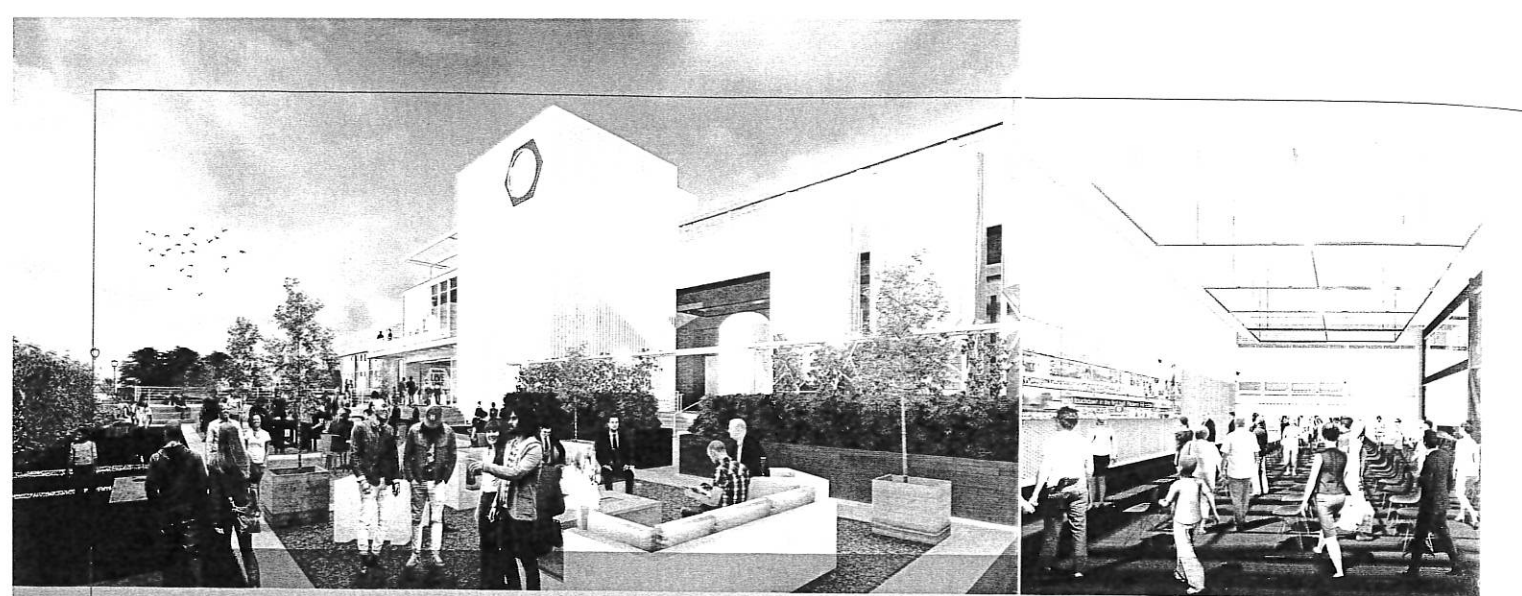
After abruptly closing in 1996, the former Pabst Brewery site is undergoing a wave of revitalization that is resulting in the creation of a new neighborhood. The latest additions to the district, now known as The Brewery, include Milwaukee Brewing Co., John Ridley's No Studio film center, a new Hyatt Place hotel, Preservation Park and three new apartment projects.

Milwaukee Brewing Co. is nearing the completion of its new home at the former Pabst distribution center, renamed The Forty Two. Milwaukee Brewing Co. will feature a tasting room, rooftop bar called Raise and a restaurant called Glass + Griddle. The new complex will have the capacity to brew and package 30,000 barrels annually, which more than doubles their current capacity.

(continued on page 2)



Glass + Griddle is among the tenants in The Forty Two, 1150 N. 9th St., scheduled to open late summer/fall 2018.



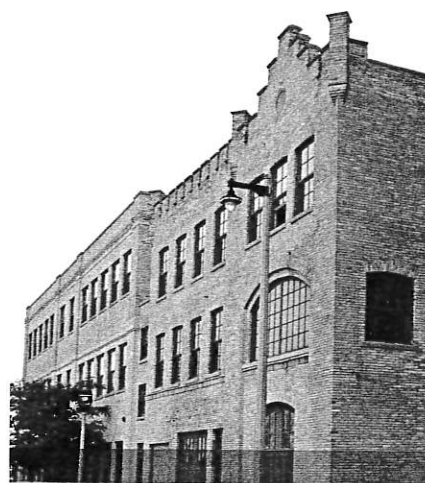
**THE FORTY TWO** – Milwaukee's newest destination experience will open late summer, featuring a new restaurant, rooftop bar, entertainment deck, and event space with spectacular views.

### The Brewery (continued)

In addition to Milwaukee Brewing Co., Raise and Glass + Griddle, The Forty Two will also feature 50,000 square feet of office space called The Factory, rentable event space known as Venue 42, and 1,000 self-storage units in the lower level.

The Forty Two isn't the only thing on the horizon for the district. Oscar winner John Ridley will soon open his filmmaking and arts center, No Studios, in the two historic buildings at 1037 W. McKinley Ave. The studio earned its name in a nod to the Japanese root word "NO," which means skill, talent and artistic endeavor. The for-profit project will house a variety of tenants including: the Milwaukee Filmmaker Alliance, 371 Productions and Custom Reality Services, with educational access for students attending both UW-Milwaukee School of Film and Marquette University. Milwaukee Film has already relocated into the building.

Ridley, a Milwaukee native, wrote the script for *12 Years a Slave*, which won the 2014 Oscar for Best Picture. He hopes that the complex will become a creative hub that will connect and inspire Milwaukeeans. "The desire is to create a collaborative workspace and social community that offers an environment for artists and art lovers to come together," said Ridley.



**NO STUDIOS** – John Ridley's filmmaking and arts center in two historic buildings at 1037 W. McKinley Ave.

The Brewery will also soon be home to a second hotel. To complement the Brewhaus Inn & Suites, a new Hyatt Place hotel is set to open this summer at 800 W. Juneau Ave. Just in time to take advantage of the summer festival season, the six-floor, 150-room hotel is located just blocks from the new Bucks arena and overlooks Milwaukee's scenic skyline. Coffee to Cocktails Bar will operate as the hotel's first floor bar serving breakfast and coffee in the morning. It will then transition into a full-service bar and restaurant in the evening.

Finally, the residential population of The Brewery will increase significantly as three multi-family apartment projects

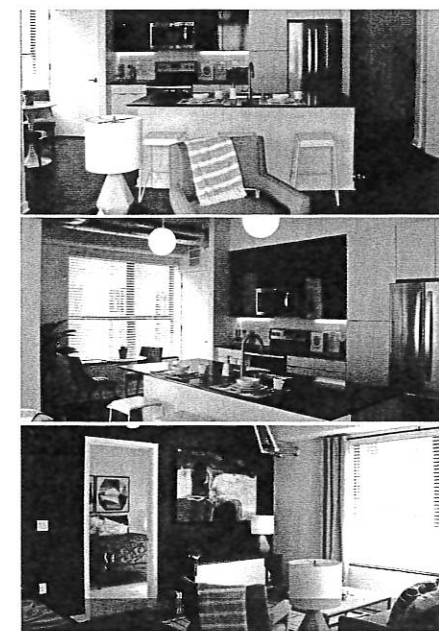
**HYATT PLACE** – The 150-room hotel overlooking the new Bucks arena and the scenic skyline includes a bar serving breakfast that will later transition into a restaurant and restaurant.



come online. Indiana-based Milhaus is building two new construction projects known as Vim + Vigor, adjectives that were commonly used to describe Pabst Brewing. The first building, located at 926 W. Juneau Ave., will bring 84 apartments to the market this summer. When the second building is complete next year, Vim + Vigor will add a combined 274 residential units and 7,000 square feet of new retail space to The Brewery.

To complement Milhaus' development, Whitestone Realty Capital, LLC has resumed work on the 118-unit historic redevelopment of the former malt house and elevator buildings that are easily recognizable as the southern host of the signature Pabst sign that spans over West Juneau Avenue. When the \$41 million redevelopment project is complete, it will bring the total number of residential units in The Brewery to nearly 800, which includes a mix of market rate, affordable, senior and student housing.

At the completion of these projects, over \$300 million will have been invested since work began in 2007, making The Brewery one of Milwaukee's newest, vibrant mixed-use neighborhoods.



**VIM + VIGOR** – 84 units will become available this summer, while another 190 units will be added next year.



**"I'm pleased that another significant company is choosing Milwaukee."**

Rocky Marcoux – Commissioner of City Development | City of Milwaukee

## Foxconn Locates North American Headquarters in Downtown Milwaukee

Foxconn Technology Group has chosen downtown Milwaukee as its new North American headquarters at the former Northwestern Mutual building, located at 611 E. Wisconsin Ave. After closing on the purchase in mid-June, Foxconn announced plans to employ more than 500 people at this location.

The 132,000-square-foot building, which will be renamed Foxconn Place, will also house the "Wisconsin Valley Innovation Center" and serve as a launch pad for innovation, entrepreneurship and product development. The technology incubator is intended to be a hub for the robust 8K and 5G ecosystem that Foxconn expects to create in southeastern Wisconsin. The downtown Milwaukee investment complements the 20 million-square-foot campus Foxconn expects to construct in Racine County.

Northwestern Mutual is vacating the 611 E. Wisconsin building and shifting those operations into their new 32-story headquarters building, located just one block to the northeast. The new Foxconn location sits on a 2-acre site with a large surface parking lot that some speculate could provide space for future development.

The Foxconn move into Milwaukee is another boost to the unprecedented momentum underway in the greater downtown area. Having another corporate headquarters in downtown Milwaukee results in more job growth, more employees renting and owning residential real estate, more customers for downtown restaurants, and more demand for services overall. "I'm pleased that another significant company is choosing Milwaukee," said Rocky Marcoux, commissioner of city development for the City of Milwaukee in an interview with *BizTimes*, "I welcome Foxconn to the center of our city."



The Hop's first vehicle arrived to its new Milwaukee home in March.

## Get Ready to Hop Around Milwaukee

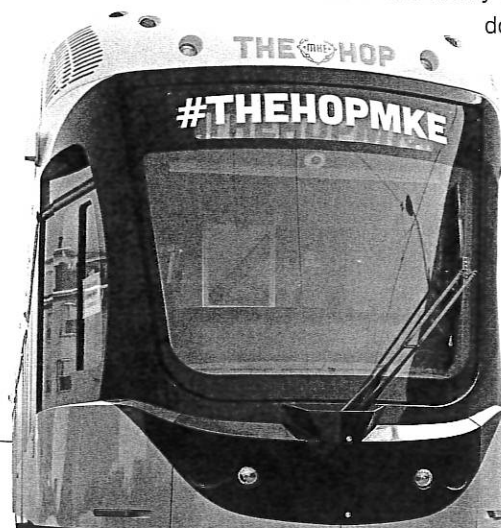
Milwaukee residents and visitors are getting closer to hopping onto The Hop presented by Potawatomi Hotel & Casino. The second of five new streetcars arrived in May with the remaining three cars being delivered this summer.

Downtown-ers will see the streetcars on the tracks this summer as they complete the federally required 1,000 kilometers of testing before the public can hop on. The streetcars are expected to be open for all to ride in late 2018 with no fee. As part of their sponsorship, Potawatomi Hotel & Casino will finance all rides for the first year.

The streetcars will have the ability to transport 120-seated riders, with a maximum capacity of 150 riders. The vehicles weigh 83,000 lbs., are 67 feet long and 8.5 feet wide. They feature low ramps that will allow riders with wheelchairs, bicycles and strollers to transition on and off easily. In addition, the electric power operations from the overhead cable system will offer riders a clean and quiet journey.

"Every single time we talk to our residents or create a survey for residents..., we are constantly being asked by the millennial crowd to push the initiative of a more walkable community," said Milwaukee Mayor Tom Barrett in an interview with *BizTimes*. "What I'm thinking is that people...are having happy hour at The Couture and they jump on the streetcar very simply and they get dropped off at the right area."

Construction of the initial routes are nearly complete and will operate approximately 2.5 miles between Milwaukee's Intermodal Station,



Burns Commons on the Lower East Side and the Lakefront. Subsequent phases will connect to the Arena District, Bronzeville, North Avenue, Walkers Point, Marquette and the UWM neighborhoods.

The initial 2.5-mile long route keeps Milwaukee on par with other cities that began with a similar length system and added extensions in subsequent phases. Seattle's system began with only 1.3 miles, while Portland launched with just 2 miles of track. Both cities have much larger and widely used streetcar systems in operation today.

The Phase 1 and Lakefront Lines are designed to serve the greatest number of riders, as well as provide significant opportunities for economic development. The initial route connects the Milwaukee Intermodal Station and its 1.5+ million annual users, the Historic Third Ward, East Town's central business district, lakefront attractions, and the Lower East Side's highest density residential neighborhoods.

The initial route is also within a quarter-mile of most of downtown's hotels, the majority of museums, popular tourist attractions and Henry Maier Festival Park. As a result, downtown Milwaukee is about to get much more walkable, interconnected, and easier to get around without the dependency on individual automobiles.

For more information on The Hop presented by Potawatomi Hotel & Casino and construction information, visit [www.themilwaakeestreetcar.com](http://www.themilwaakeestreetcar.com).

## Meet Downtown's Top Dog: Bob's Escapades Aid Key to Change



When Shawna Nicols took over the task of walking the family dog, she wasn't intending to publish a book. Nicols began walking Bob, who in fact is a lady dog, after her stepfather, Joe Weirick, passed away last year. Weirick was a real estate executive and board member of Milwaukee Downtown, BID #21 and the Milwaukee Riverwalk District. He catalyzed change on several notable projects and buildings, and was also married to Milwaukee Downtown, BID #21 CEO Beth Weirick, mom to Nicols.

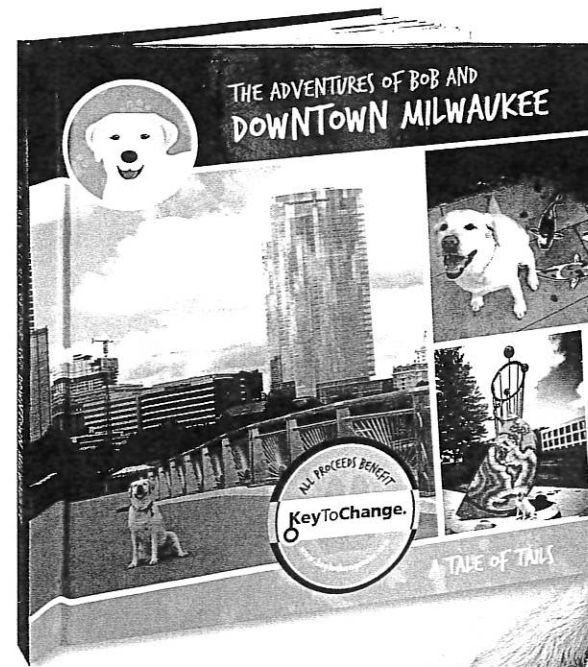
Nicols, a DJ, fashion designer and former Badgers basketball player, soon realized that her walks with Bob were not only giving her and Bob their daily dose of exercise, they were also helping her work through the grief of her recent loss. She began taking pictures of Bob around downtown Milwaukee on their daily adventures.

The book began as a scrapbook for her mom, but after sharing the project with friends, it turned into something more. The Weiricks' passion and dedication to Milwaukee is what inspired Nicols to produce "The Adventures of Bob and Downtown Milwaukee."

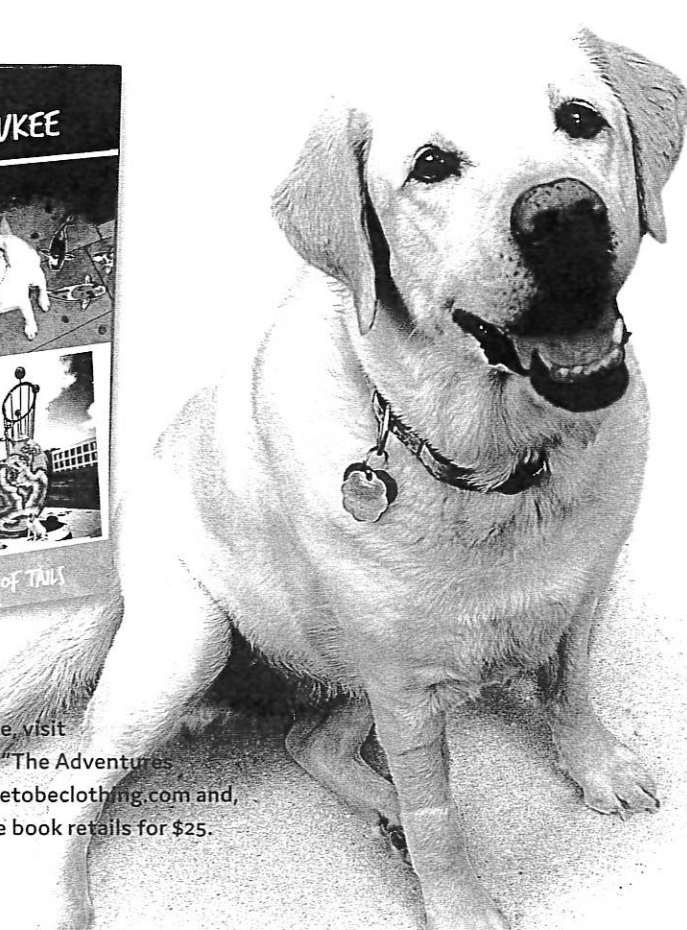
Local landmarks in the book include The Intermodal Station, Wisconsin Center, Hilton Milwaukee City Center, The Shops of Grand Avenue, Milwaukee Riverwalk, Bronze Fonz, Milwaukee Public Market, and Betty Brinn Children's Museum, just to name a few.

All of the profits from Nicols' book are being donated to Key to Change – a campaign aimed at ending chronic homelessness in downtown Milwaukee. Launched in September 2017 by Milwaukee Downtown, the aptly named campaign earned its name thanks to the seven key-shaped parking meters positioned along Wisconsin Avenue. The meters serve as donation receptacles, but online donations are also accepted. The funds go toward one of three programs: the hiring of a Downtown Homeless Outreach Coordinator, a Housing First Endowment Fund, and Move-In Kits, providing household essentials to participants.

Milwaukee Downtown is working alongside the Milwaukee County Housing Division's Housing First project, which recognizes housing as the first step toward stabilization, to further its mission of ending chronic homelessness.



To learn more about Key to Change or to donate, visit [www.keytochangemke.com](http://www.keytochangemke.com). You can purchase "The Adventures of Bob and Downtown Milwaukee" at [www.daretobeclothing.com](http://www.daretobeclothing.com) and, coming soon, at select downtown retailers. The book retails for \$25.



# Clean Sweep Ambassadors Add New Grime-Fighting Agent

From sunup to sundown, Milwaukee Downtown's Clean Sweep Ambassadors (CSAs) keep all of BID #21's 150 square blocks sparkling clean and litter-free.

Adding to their arsenal of dirt-busting devices is a new grime-fighting agent – the Tennant 636 Green Machine. Rolled out in May, the Tennant 636 Green Machine is a top-of-the-line garbage picker-upper, pressure washer and dust collector that can handle elevation changes such as street to sidewalk with ease.

To get technical, the 636 features an 80.7-inch sweeping path, holds 1.33 cubic yards, vacuums at up to 2,800 rpm, and covers approximately 205,920 square feet all while operating with minimal noise.

"The new Green Machine increases our productivity tenfold," said Greg Peterson, director of Milwaukee Downtown's Clean Sweep Ambassador Program. "Its large holding tank and reduced water usage allow for less frequent trips to unload debris or fill up on water. Plus, it's multiple machines in one and you can't beat that!"



**"The new Green Machine increases our productivity tenfold."**

– GREG PETERSON, DIRECTOR - CLEAN SWEEP AMBASSADOR PROGRAM

In addition to daily panning and brooming, the CSAs implement weekly Super Block Cleanups, which include gumbusting, power washing, machine scrubbing and scouring reachable signage in high-traffic areas. To find out when your block is on the calendar, call 414.788.4976.

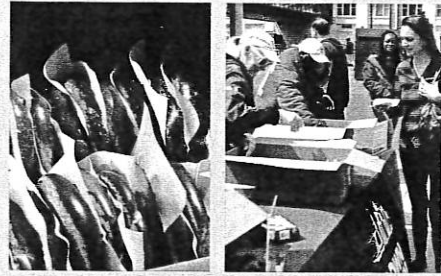
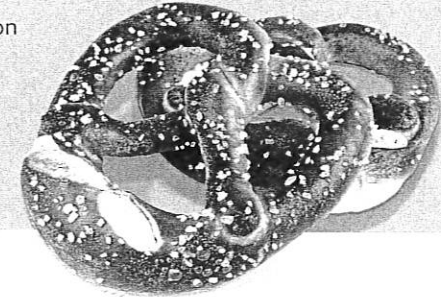
Milwaukee Downtown's Public Service Ambassadors (PSAs) are no strangers to bringing smiles to all who walk our city's streets. This year, these walking concierges are helping to add a bit more cheer.

Random Acts of Kindness is a revived initiative to surprise and delight guests, residents and employees with a small gift or delectable.

Made possible by the support of local businesses, these secret pop-ups are entirely random – meaning the day, time and location remain undisclosed until the morning of the handout.

The first of these giveaways took place on April 26, also National Pretzel Day. Public Service Ambassadors took to the corner of Chase Tower at Water and Wisconsin wearing smiles and disposable gloves

to hand out 500 pretzels donated by the Milwaukee Pretzel Company. To get the scoop on a Random Act, follow Milwaukee Downtown on Twitter @MilwDowntown or on Facebook at Milwaukee Downtown. Want to surprise downtown with a #RandomActMKE? You provide the product, Milwaukee Downtown will help with distribution and promotion for your downtown giveaway. Contact Erica Chang, marketing and special events coordinator, at [echang@milwaueedowntown.com](mailto:echang@milwaueedowntown.com) or 414.220.4700 ext. 5 for more information.



# Let's MOTOR! Downtown Milwaukee's New Search Engine Hits the Streets

When Milwaukee Downtown introduced the Traveling Information Kiosk (TIK) in 2000, it quickly became an international sensation. Shortly after its debut, Milwaukee Downtown received a Downtown Achievement Award from the International Downtown Association. Struck by its creativity and innovation, BIDs, BIAs and Main Streets around the globe soon developed their own version of the traveling information kiosk.

Now, 18 years later, the TIK is shifting gears. This summer, information seekers will be able to step inside downtown Milwaukee's living room, thanks to an innovative concept – a one-of-a-kind, completely customized, not-seen-anywhere-else-in-the-world tiny house!

Milwaukee Downtown's new search engine, called The MOTOR – Milwaukee's Own Traveling Outdoor Resource – will debut at the end



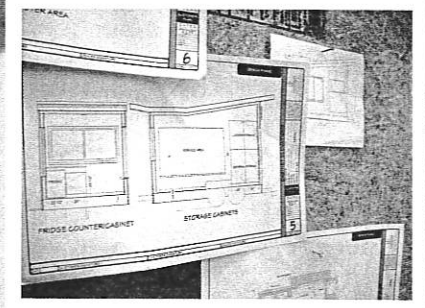
of June. Powering ideas on what to do, where to stay and what to eat, The MOTOR will be the go-to resource for newcomers and out-of-town guests, providing an interactive, consumer-friendly experience on all aspects of downtown. Paving the way for other mobile info booths, it will be the first application of its kind, built by Oak Creek, Wis.-based Utopian Villas.

"The MOTOR will significantly impact the way in which we interact with our customers," said Steve Basting, director of Milwaukee Downtown's Public Service Ambassador Program. "The new vehicle will allow us to be a mobile, four-season destination and provides our patrons with the opportunity to 'enter' our info center, raising the bar on customer service."

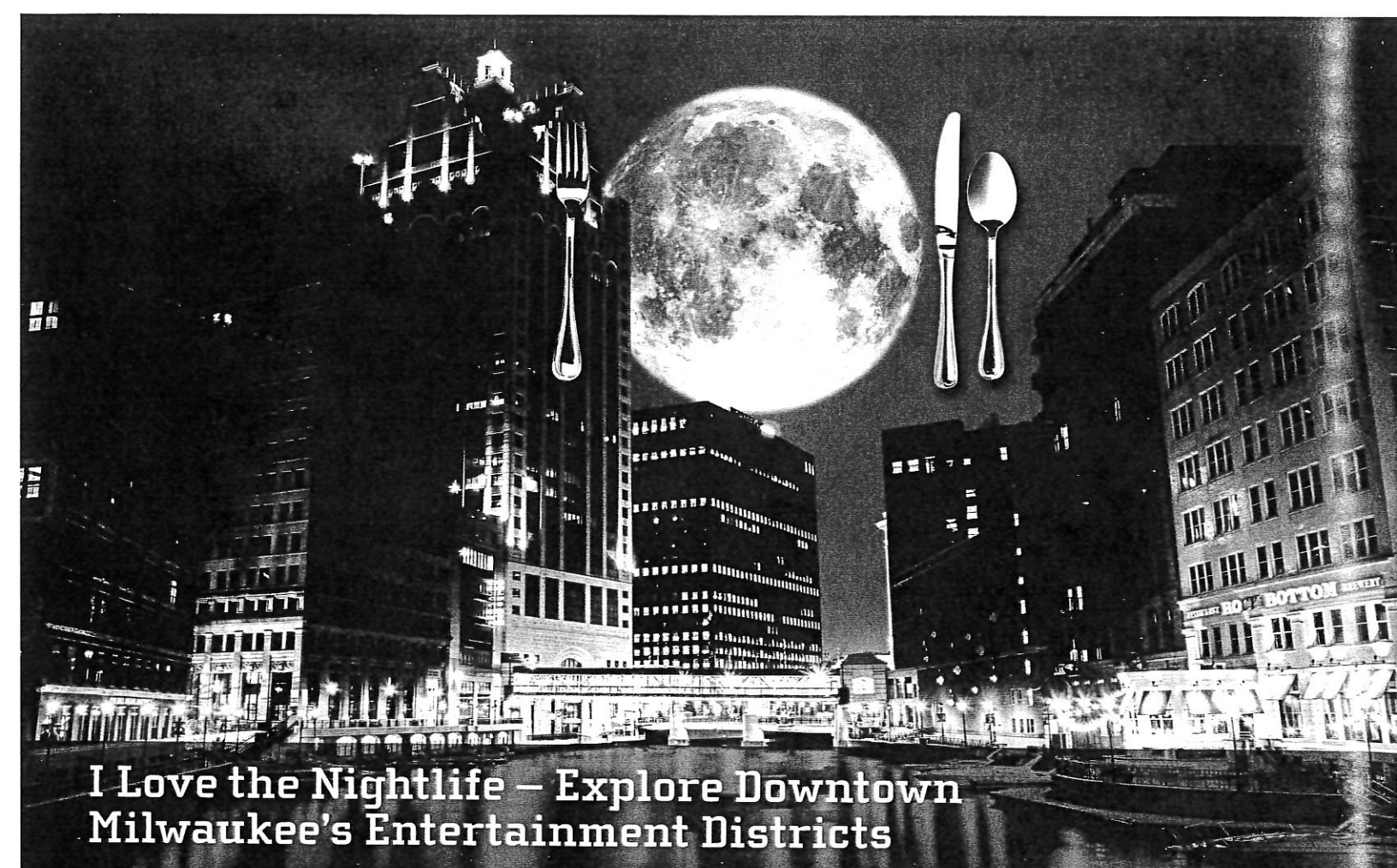
The MOTOR will continue to be staffed by Milwaukee Downtown's knowledgeable Public Service Ambassadors, and tour the festival and concert circuit throughout downtown Milwaukee and outlying communities. Its new climate-controlled cabin will now make downtown's amenity offerings tangible in winter – or even after dark with its cutting-edge lighting technology.

Watch for additional info on The MOTOR's grand opening. A series of stops will be held throughout the summer to get employees, residents and out-of-town guests acclimated with the new info center.

To schedule The MOTOR at an upcoming event, contact Steve Basting, director of the Public Service Ambassador Program, at [sbasting@milwaueedowntown.com](mailto:sbasting@milwaueedowntown.com).



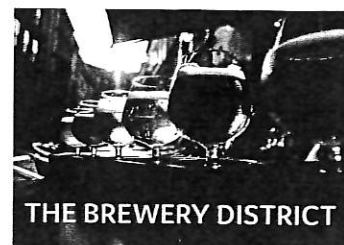
Milwaukee Downtown reviews progress as The MOTOR goes from the drawing board to fabrication and construction.



## I Love the Nightlife – Explore Downtown Milwaukee's Entertainment Districts

Working with the Responsible Hospitality Institute, Milwaukee Downtown, BID #21 is updating its nighttime strategy to ensure downtown's entertainment districts remain safe, vibrant and economically prosperous places to socialize, live and work. As part of its 2018 refresh strategy, Milwaukee Downtown will be branding its entertainment zones through social media and a new website. In addition, the organization is exploring extended Public Service Ambassador patrols into the evening hours.

Below is a list of veteran and coming-soon destinations curated as of June 15, 2018. Don't see your establishment on the list? Drop us a line at [info@milwaukeedowntown.com](mailto:info@milwaukeedowntown.com).



**THE BREWERY DISTRICT**

- Best Place**  
901 W. Juneau Avenue  
414.630.1609 [bestplacemilwaukee.com](http://bestplacemilwaukee.com)
- Glass + Griddle**  
– *Coming Soon!*  
1130 N. 9th Street
- Jackson's Blue Ribbon Pub**  
1203 N. 10th Street  
414.276.7271 [jacksonsbrp.com](http://jacksonsbrp.com)
- Milwaukee Brewing Company**  
– *Coming Soon!*  
1150 N. 9th Street  
414.226.2337 [mkebrewing.com](http://mkebrewing.com)



**Pabst Milwaukee Brewery & Taproom**  
1037 W. Juneau Avenue  
414.908.0025 [pabstmkebrewery.com](http://pabstmkebrewery.com)



**CATHEDRAL SQUARE DISTRICT**

- 42 Lounge**  
600 E. Ogden Avenue  
414.988.9982 [42lounge.com](http://42lounge.com)
- 600 EAST Café**  
600 E. Wisconsin Avenue  
844.600.EAST [600eastcafe.com](http://600eastcafe.com)
- Alem Ethiopian Village**  
307 E. Wisconsin Avenue  
414.224.5324 [alem-ethiopianvillage.com](http://alem-ethiopianvillage.com)
- Amilinda**  
315 E. Wisconsin Avenue  
414.369.3683 [amilinda.com](http://amilinda.com)
- The Astor Bar & Grille**  
924 E. Juneau Avenue  
414.278.8660
- Bacchus**  
925 E. Wells Street  
414.765.1166 [bacchusmke.com](http://bacchusmke.com)
- Bad Genie**  
789 N. Jefferson Street  
414.810.1670 [badgenie.com](http://badgenie.com)
- The Belmont Tavern**  
784 N. Jefferson Street  
414.988.6161 [thebelmonttavern.com](http://thebelmonttavern.com)
- Blu – The Pfister Hotel**  
424 E. Wisconsin Avenue  
414.298.3196 [blumilwaukee.com](http://blumilwaukee.com)
- Bollywood Grill**  
1038 N. Jackson Street  
414.271.8200 [bollywoodgrill.us](http://bollywoodgrill.us)
- Buckley's Restaurant & Bar**  
801 N. Cass Street  
414.277.1111 [buckleysmilwaukee.com](http://buckleysmilwaukee.com)
- Café at The Plaza**  
1007 N. Cass Street  
414.272.0515 [cafeattheplaza.com](http://cafeattheplaza.com)

- Café Calatrava**  
750 N. Art Museum Drive  
414.224.3831 [mam.org](http://mam.org)
- Café at The Pfister**  
424 E. Wisconsin Avenue  
414.390.3878 [thepfisterhotel.com](http://thepfisterhotel.com)
- Carnevor**  
718 N. Milwaukee Street  
414.223.2200 [carnevor.com](http://carnevor.com)
- Chic Underground Lounge**  
770 N. Jefferson Street  
414.882.7708 [chicundergroundlounge.com](http://chicundergroundlounge.com)
- Chipotle**  
600 E. Ogden Avenue  
414.223.4710 [chipotle.com](http://chipotle.com)
- CITY.NET Café**  
306 E. Wisconsin Avenue  
414.336.1723 [citynetjazz.com](http://citynetjazz.com)
- Classy Girl Cupcakes**  
825 N. Jefferson Street  
414.270.1877 [classygirlcupcakes.com](http://classygirlcupcakes.com)
- Coast**  
931 E. Wisconsin Avenue  
414.727.5555 [coastrestaurant.com](http://coastrestaurant.com)
- County Clare**  
1234 N. Astor Street  
414.272.5273 [countyclare-inn.com](http://countyclare-inn.com)
- Cousins Subs**  
324 E. Wisconsin Avenue  
414.272.0876 [cousinssubs.com](http://cousinssubs.com)
- Cubanitas**  
728 N. Milwaukee Street  
414.225.1760 [getcubanitas.com](http://getcubanitas.com)
- Davians 411 Cafe**  
411 E. Wisconsin Avenue  
414.276.3354 [411.davians.com](http://411.davians.com)
- Dick's Pizza**  
730 N. Milwaukee Street  
414.272.3425 [dicksmilwaukee.com](http://dicksmilwaukee.com)
- Dino's Taverna**  
777 N. Jefferson Street  
414.221.1777
- Distil**  
722 N. Milwaukee Street  
414.220.9411 [distilmilwaukee.com](http://distilmilwaukee.com)
- Dogg Haus**  
790 N. Jefferson Street  
414.270.3455 [thedogghaus.com](http://thedogghaus.com)  
755 N. Water Street  
414.226.2664 [thedogghaus.com](http://thedogghaus.com)
- Downtown Kitchen**  
777 E. Wisconsin Avenue  
414.287.0303 [downtownkitchenmke.com](http://downtownkitchenmke.com)
- Einstein Bros. Bagels**  
544 E. Ogden Avenue  
414.276.9888 [einsteinbros.com](http://einsteinbros.com)
- Elsa's on the Park**  
833 N. Jefferson Street  
414.765.0615 [elsas.com](http://elsas.com)
- Flannery's Bar & Restaurant**  
425 E. Wells Street  
414.278.8586 [flannerysmilwaukee.com](http://flannerysmilwaukee.com)
- Harbor House**  
550 N. Harbor Drive  
414.395.4900 [harborhousemke.com](http://harborhousemke.com)
- Indulge**  
708 N. Milwaukee Street  
414.390.9463 [getindulge.com](http://getindulge.com)
- Jamba Juice**  
544 E. Ogden Avenue  
414.800.7991 [jambajuice.com](http://jambajuice.com)
- Jersey Mike's**  
544 E. Ogden Avenue  
414.539.3253 [jerseymikes.com](http://jerseymikes.com)
- Java Corner Cafe**  
731 N. Jackson Street  
414.847.0033
- Jimmy John's**  
1425 N. Jefferson Street  
414.347.1234 [jimmyjohns.com](http://jimmyjohns.com)
- The Knick**  
1030 E. Juneau Avenue  
414.272.0011 [theknickrestaurant.com](http://theknickrestaurant.com)
- Louise's**  
801 N. Jefferson Street  
414.273.4224 [louiseswisconsin.com](http://louiseswisconsin.com)
- Lucid Light Lounge**  
729 N. Milwaukee Street  
414.431.5557 [lucidmke.com](http://lucidmke.com)
- Mason Street Grill**  
425 E. Mason Street  
414.298.3131 [masonstreetgrill.com](http://masonstreetgrill.com)
- Mi-key's**  
811 N. Jefferson Street  
414.273.5397 [mikeysmilwaukee.com](http://mikeysmilwaukee.com)
- Millioke**  
323 E. Wisconsin Avenue  
414.847.3162 [millioke.com](http://millioke.com)
- Milwaukee Garden Grille**  
611 N. Broadway  
414.271.6611 [hiltongardeninmilwaukeedowntown.com](http://hiltongardeninmilwaukeedowntown.com)
- Monica's On Astor**  
1228 N. Astor Street  
414.765.9402
- My Office**  
763 N. Milwaukee Street  
414.276.9646
- Mykonos Gyro & Cafe**  
1014 N. Van Buren Street  
414.224.6400 [mykonosmilwaukee.com](http://mykonosmilwaukee.com)
- Noodles & Company**  
544 E. Ogden Avenue  
414.273.9705 [noodles.com](http://noodles.com)
- Oak & Shield Pub**  
600 E. Ogden Avenue  
414.988.9982 [oakandshieldpub.com](http://oakandshieldpub.com)
- Ouzo Cafe**  
776 N. Milwaukee Street  
414.272.6896 [ouzocafe.com](http://ouzocafe.com)



- Panera Bread**  
600 E. Ogden Avenue  
414.224.0200 [panerabread.com](http://panerabread.com)
- Pastiche at the Metro**  
411 E. Mason Street  
414.225.3270 [pastichebistro.com](http://pastichebistro.com)
- The Phoenix Cocktail Club**  
785 N. Jefferson Street  
414.539.5918 [thephoenixmke.com](http://thephoenixmke.com)
- Pita Pit**  
231 E. Wisconsin Avenue  
414.930.0910 [pitapitusa.com](http://pitapitusa.com)
- Plum Lounge**  
780 N. Jefferson Street  
414.210.3236 [plumlounge.com](http://plumlounge.com)
- Rare Steakhouse**  
833 E. Michigan Street  
414.273.7273 [milwaukee.raresteakandseafood.com](http://milwaukee.raresteakandseafood.com)
- Real Chili**  
419 E. Wells Street  
414.271.4042 [realchilimilwaukee.com](http://realchilimilwaukee.com)
- Red June Café**  
773 N. Jefferson Street  
414.800.7906 [redjunemke.com](http://redjunemke.com)
- Sababa Cafe**  
330 E. Kilbourn Avenue  
414.224.9505 [sababamilwaukee.com](http://sababamilwaukee.com)
- Sake Tumi**  
714 N. Milwaukee Street  
414.224.7253 [sake-milwaukee.com](http://sake-milwaukee.com)
- Shah Jee's**  
770 N. Jefferson Street  
414.271.5354 [sahjees.net](http://sahjees.net)
- The Soup House**  
324 E. Michigan Street  
414.277.7687 [souphousemke.com](http://souphousemke.com)
- The Soup Market**  
111 E. Kilbourn Avenue  
414.727.0700 [soupmarket.com](http://soupmarket.com)
- SportClub**  
750 N. Jefferson Street  
414.808.1588 [sportclubmke.com](http://sportclubmke.com)
- Stella Van Buren**  
550 N. Van Buren Street  
414.847.5622 [stellavanburen.com](http://stellavanburen.com)
- Starbucks**  
544 E. Ogden Avenue  
414.221.9099 [starbucks.com](http://starbucks.com)  
323 E. Wisconsin Avenue  
414.278.5999 [starbucks.com](http://starbucks.com)  
720 E. Wisconsin Avenue  
414.208.7346 [starbucks.com](http://starbucks.com)
- Subway**  
506 E. Mason Street  
414.273.1677 [subway.com](http://subway.com)  
1200 N. Van Buren Street  
414.220.4555 [subway.com](http://subway.com)
- Swingin' Door Exchange**  
219 E. Michigan Street  
414.276.8150 [swingindoorexchange.com](http://swingindoorexchange.com)
- Taco Bar MKE**  
– *Coming Soon!*  
782 N. Jefferson Street
- Taylor's**  
795 N. Jefferson Street  
414.271.2855 [taylormilwaukee.com](http://taylormilwaukee.com)
- Third Coast Provisions**  
724 N. Milwaukee Street  
414.323.7434 [thirdcoastprovisions.com](http://thirdcoastprovisions.com)
- This Is It**  
418 E. Wells Street  
414.278.9192 [thisisitbar.com](http://thisisitbar.com)
- Ward's House of Prime**  
540 E. Mason Street  
414.223.0135 [wardshouseofprime.com](http://wardshouseofprime.com)
- Whiskey Bar**  
788 N. Jackson Street  
414.312.8566 [whiskeybarmilwaukee.com](http://whiskeybarmilwaukee.com)
- Zarletti**  
741 N. Milwaukee Street  
414.225.0000 [zarletti.net](http://zarletti.net)
- Zoup!**  
1433 N. Jefferson Street  
414.944.7500 [zoup.com](http://zoup.com)





**Avenue Bar & Grill**  
611 W. Wisconsin Avenue  
414.271.7327

**BB's (Build a Breakfast – Build a Burger)**  
633 W. Wisconsin Avenue  
414.270.1070 bbmilwaukee.com

**Benihana Japanese Steakhouse**  
850 N. Plankinton Avenue  
414.270.0890 benihana.com

**Bistro/Bar 333**  
333 W. Kilbourn Avenue  
414.270.6130

**Brew City MKE Bar & Beer Exhibit**  
275 W. Wisconsin Avenue  
414.273.8288 brewcitymilwaukee.com

**The Café – Hilton Milwaukee**  
509 W. Wisconsin Avenue  
414.271.7250 hiltonmilwaukee.com

**The Capital Grille**  
310 W. Wisconsin Avenue  
414.223.0600 thecapitalgrille.com

**DOC's Commerce Smokehouse**  
754 N. 4th Street  
414.935.2029 docsbbq.net

**Domino's Pizza**  
719 W. Wisconsin Avenue  
414.271.8990 dominos.com

**Dunkin' Donuts**  
622 W. Wisconsin Avenue  
414.347.1599 dunkindonuts.com

**Gyro MKE – Coming Soon!**  
700 W. Wisconsin Avenue

**Kiku**  
202 W. Wisconsin Avenue  
414.270.1988 kikumilwaukee.com

**Major Goolsby's**  
340 W. Kilbourn Avenue  
414.271.3414 majorgoolsbys.com

**Michigan Grill**  
633 W. Michigan Street  
414.272.8410

**Miller Time Pub & Grill**  
509 W. Wisconsin Avenue  
414.271.2337 millertimepubandgrill.com

**Milwaukee ChopHouse**  
633 N. 5th Street  
414.226.2467 chophouse411.com

**Mo's – A Place For Steaks**  
720 N. Plankinton Avenue  
414.272.0720 mosaplaceforsteaks.com

**Mo's Irish Pub**  
142 W. Wisconsin Avenue  
414.272.0721 mosirishpub.com

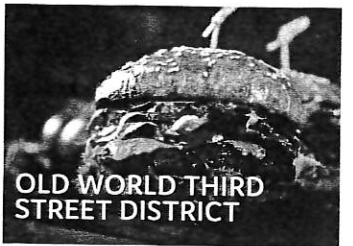
**Monarch Lounge**  
Hilton Milwaukee City Center  
509 W. Wisconsin Avenue  
414.271.7250 hiltonmilwaukee.com

**R Cafe**  
814 W. Wisconsin Avenue  
414.286.2005 rcafeonline.com

**Starbucks**  
509 W. Wisconsin Avenue  
414.390.1804 starbucks.com

**The Stone Creek Coffee Factory**  
422 N. 5th Street  
414.431.2157 stonecreekcoffee.com

**Xankia**  
222 W. Wells Street  
414.817.0241 banhminhuy.com



**1983 Arcade Bar**  
1110 N. Old World Third Street  
262.949.6903 1983mke.com

**Ale Asylum Riverhouse**  
1110 N. Old World Third Street  
414.269.8700 riverhousemke.com

**The Brass Alley**  
1023 N. Old World Third Street  
414.800.6240 thebrassalley.com

**Brick 3 Pizza**  
1107 N. Old World Third Street  
414.224.6040 brick3pizza.com

**Brunch**  
800 N. Plankinton Avenue  
414.210.5381 brunchmke.com

**Buck Bradley's Saloon & Eatery**  
1019 N. Old World Third Street  
414.224.8500 buckbradleys.com

**Burgerim – Coming Soon!**  
1001 N. Old World Third Street  
burgerim.com

**Cantina Milwaukee**  
1110 N. Old World Third Street  
414.897.8137 cantinamilwaukee.com

**Calderone Club**  
842 N. Old World Third Street  
414.273.3236 calderoneclub.net

**Carson's**  
301 W. Juneau Avenue  
414.223.3311 ribs.com

**Comedy Café**  
1033 N. Old World Third Street  
414.271.5653 milwaukeecomedycfe.com

**Evolution Gastro Pong**  
1023 N. Old World Third Street  
414.831.7746 evolutionmke.com

**George Webb Restaurant**  
812 N. Old World Third Street  
414.278.0225 georgewebb.com

**The King & I**  
830 N. Old World Third Street  
414.276.4181 kingandirestaurant.com

**The Loaded Slate**  
1137 N. Old World Third Street  
414.273.5700 theloadedslate.com

**Mader's German Restaurant**  
1041 N. Old World Third Street  
414.271.3377 madersrestaurant.com

**Milwaukee Brat House**  
1013 N. Old World Third Street  
414.273.8709 milwaukeebrathouse.com

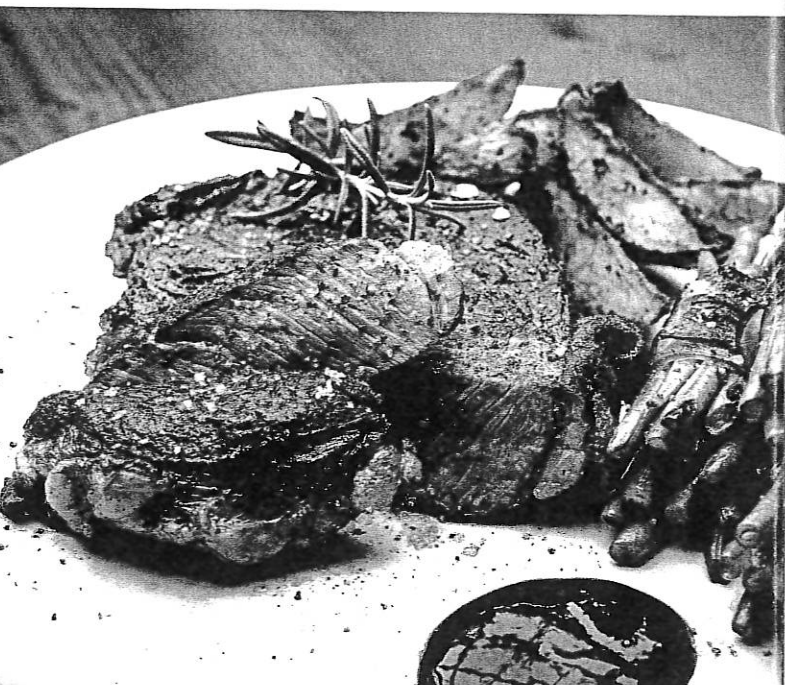
**Oak Barrel Public House**  
1033 N. Old World Third Street  
414.897.8320 oakbarrelmilwaukee.com

**Old German Beer Hall**  
1009 N. Old World Third Street  
414.226.2728 oldgermanbeerhall.com

**Point Burger Express**  
322 W. State Street  
414.488.8315 pointburgerexpress.com

**Potbelly Sandwich Shop**  
135 W. Wisconsin Avenue  
414.226.0014 potbelly.com

**The Pub Club**  
1103 N. Old World Third Street  
414.988.5000 mke.thepubclubmilwaukee.com



**Red, White & Blue**  
1044 N. Old World Third Street  
414.226.6044 mke.redwhitebluebar.com

**San Giorgio Pizzeria Napoletana**  
838 N. Old World Third Street  
414.276.2876 sangiorgiopizza.com

**The Shops of Grand Avenue**  
275 W. Wisconsin Avenue  
414.224.0655 grandavenueshops.com

Choose from Heidi's Smoothies & Bubble Tea Drinks, La Delicatessen, Laura's Gourmet Popcorn, Panda Express, Peddler Jim's Produce, Qdoba, Rocky Roco Pizza, Subway, Tomato Destination and Wild Flour Bakery

**Stone Creek Coffee**  
275 W. Wisconsin Avenue  
414.298.9965 stonecreekcoffee.com

**Truth Lounge**  
1111 N. Old World Third Street  
414.581.5540

**Ugly's Pub**  
1125 N. Old World Third Street  
414.763.3852 uglismke.com

**Uber Tap Room**  
1048 N. Old World Third Street  
414.755.2424 ubertaproom.com

**The View – Evolution**  
1023 N. Old World Third Street  
414.831.7746 theviewevolution.com

**w xyz bar – Aloft Milwaukee Downtown**  
1230 N. Old World Third Street  
414.226.0122 aloftmilwaukeekeedowntown.com

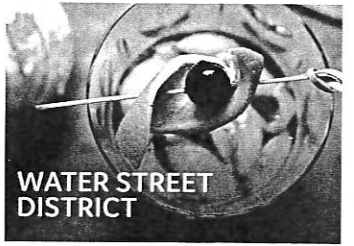
**Who's on Third**  
1007 N. Old World Third Street  
414.897.8373 whosonthirdmke.com



**Birch + Butcher**  
459 E. Pleasant Street  
414.323.7372 birchandbutcher.com

**The Brown Bottle**  
221 W. Galena Street  
414.539.6450 brownbottlemke.com

**Coffee With A Conscience**  
1555 N. Rivercenter Drive  
414.659.5365 coffeewithaconscience.net



**AJ Bombers**  
1247 N. Water Street  
414.221.9999 ajbombers.com

**Alderaan Coffee**  
1560 N. Water Street  
414.395.9955 aldaeraancoffee.com

**Bar Louie**  
1114 N. Water Street  
414.847.1492 barlouie.com

**BarNone**  
1139 N. Water Street  
414.226.6969 barnonemilwaukee.com

**Brothers Bar & Grill**  
1213 N. Water Street  
414.224.1690 brothersbar.com

**BrownStone Social Lounge**  
524 N. Water Street  
414.210.4824 brownstonesociallounge.com

**Buffalo Wild Wings Grill & Bar**  
1123 N. Water Street  
414.277.0293 buffalowildwings.com

**China Gourmet**  
117 E. Wells Street  
414.272.1688 china-gourmet.com

**CLEAR**  
139 E. Kilbourn Avenue  
414.291.4793 clearbarandlounge.com

**The Coffee Bean**  
624 N. Water Street  
414.276.2233 thecoffeebeanmke.com

**Colour Palate**  
789 N. Water Street  
414.395.3164 colourpalate.com

**Duke's on Water**  
158 E. Juneau Street  
414.274.7204

**Dunkin' Donuts**  
111 E. Wisconsin Avenue  
414.224.7924 dunkindonuts.com

**Fire On Water**  
518 N. Water Street  
414.291.4411 fireonwaterstreet.com

**FORE! Milwaukee**  
530 N. Water Street  
414.272.FORE foremilwaukee.com

**Grassroots Salad Company**  
607 N. Water Street  
414.249.4464 ieatgrassroots.com

**Harp Irish Pub**  
113 E. Juneau Avenue  
414.289.0700 theharpirishpub.com

**Ian's Pizza**  
146 E. Juneau Avenue  
414.727.9200 ianspizza.com

**Jimmy John's**  
767 N. Water Street  
414.227.1166 jimmyjohns.com

**Kil@wat**  
139 E. Kilbourn Avenue  
414.291.4793 kilawatcuisine.com

**McGillycuddy's**  
1135 N. Water Street  
414.278.8888 mcgillycuddysmilwaukee.com

**Pier 106**  
106 W. Wells Street  
414.273.7678 pier106seafoodtavern.com

**Pizano's Pizza & Pasta – Coming Soon!**  
1150 N. Water Street  
pizanoschicago.com

**Pourman's Pub**  
1127 N. Water Street  
262.207.4179

**Qdoba Mexican Grill**  
1150 N. Water Street  
414.389.8744 qdoba.com

**Red Rock Saloon**  
1227 N. Water Street  
414.431.0467 redrockmilwaukee.com

**Rock Bottom Restaurant & Brewery**  
740 N. Plankinton Avenue  
414.276.3030 rockbottom.com

**Rodizio Grill**  
777 N. Water Street  
414.431.3106 rodiziogrill.com/milwaukee

**Rogues Gallery**  
134 E. Juneau Avenue  
414.763.1102 roguesgallerymke.com

**Rosie's on Water**  
1111 N. Water Street  
414.274.7213 rosiesonwater.com

**Rumpus Room**  
1030 N. Water Street  
414.292.0100 rumpusroommke.com

**SafeHouse**  
779 N. Front Street  
414.271.2007 safe-house.com

**Scooter's Pub**  
154 E. Juneau Avenue  
414.274.7201

**Starbucks**  
920 N. Water Street  
414.272.0232 starbucks.com

**Subway**  
710 N. Plankinton Avenue  
414.212.8495 subway.com

**Trinity Three Irish Pubs**  
125 E. Juneau Avenue  
414.278.7033 trinitythreeirishpubs.com

**Vagabond**  
1122 N. Edison Street  
414.223.1122 vagabondmke.com

**Waterfront Deli**  
761 N. Water Street  
414.220.9300 milwaukee waterfrontdeli.com

**Water Street Brewery**  
1101 N. Water Street  
414.272.1195 waterstreetbrewery.com