



CERTIFICATE OF APPROPRIATENESS APPLICATION FORM

Incomplete applications will not be processed for Commission review.
Please print legibly.

1. HISTORIC NAME OF PROPERTY OR HISTORIC DISTRICT: (if known)

St. Casimir Parish (Rectory & Convent)

ADDRESS OF PROPERTY:

2618 N. Bremen St. Milwaukee, WI 53212 & 2626 N. Bremen St. Milwaukee, WI 53212

2. NAME AND ADDRESS OF OWNER:

Name(s): Meta House, Inc.

Address: 2625 N. Weil St.

City: Milwaukee

State: WI

ZIP: 53212

Email: skoehn@metahouse.org

Telephone number (area code & number) Daytime: (414) 977-5803

Evening: (414) 881-9909

3. APPLICANT, AGENT OR CONTRACTOR: (if different from owner)

Name(s):

Address:

City:

State:

ZIP Code:

Email:

Telephone number (area code & number) Daytime:

Evening:

4. ATTACHMENTS: (Because projects can vary in size and scope, please call the HPC Office at 414-286-5712 for submittal requirements)

A. REQUIRED FOR MAJOR PROJECTS:

- Photographs of affected areas & all sides of the building (annotated photos recommended)
- Sketches and Elevation Drawings (1 full size and 1 reduced to 11" x 17" or 8 1/2" x 11")
A digital copy of the photos and drawings is also requested.
- Material and Design Specifications (see next page)

B. NEW CONSTRUCTION ALSO REQUIRES:

Floor Plans (1 full size and 1 reduced to a maximum of 11" x 17")

Site Plan showing location of project and adjoining structures and fences

**PLEASE NOTE: YOUR APPLICATION CANNOT BE PROCESSED UNLESS
BOTH PAGES OF THIS FORM ARE PROPERLY COMPLETED
AND SIGNED.**

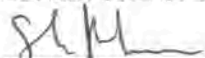
5. DESCRIPTION OF PROJECT:

Tell us what you want to do. Describe all proposed work including materials, design, and dimensions. Additional pages may be attached via email.

1. Selective demolition and removal of existing windows.
2. Provide for safe and legal removal of any lead in and around the paint.
3. Install new double hung windows with vinyl exteriors.
4. The daylight opening of the new windows shall be as close as possible to the opening of the existing windows so as to conform to the City of Milwaukee requirements. Please refer to attached report for further information.
5. Vinyl exterior color to match as closely as possible the existing color.
6. None of the windows with leaded glass are included in this project. None of the windows in the attics are included in this project.
7. The large window on the East elevation of 2618 will get a picture window flanked by two double hung windows.
8. The large window on the North elevation of 2618 will get two double hung windows.
9. For reference, please see the attached PDFs.
 - a. Design specifications are outlined in the document titled, "Report"
 - b. Images of the respective buildings are titled, "RWN 2626NBremen Images" and "RWS 2618NBremen Images"

If you have any questions, please contact Sarah Koehn, Business Development Manager at Meta House: (414) 977-5803 or skoehn@metahouse.org.

6. SIGNATURE OF APPLICANT:



Signature

Sarah Koehn

Please print or type name

23 May 2019

Date

This form and all supporting documentation MUST arrive by 4:00 pm (11:59 pm via email) on the deadline date established to be considered at the next Historic Preservation Commission Meeting. Any information not provided to staff in advance of the meeting will not be considered by the Commission during their deliberation. Please call if you have any questions and staff will assist you.

Mail or Email Form to:

Historic Preservation Commission
City Clerk's Office
841 N. Broadway, Rm. B1
Milwaukee, WI 53202

PHONE: (414) 286-5712 or 286-5722

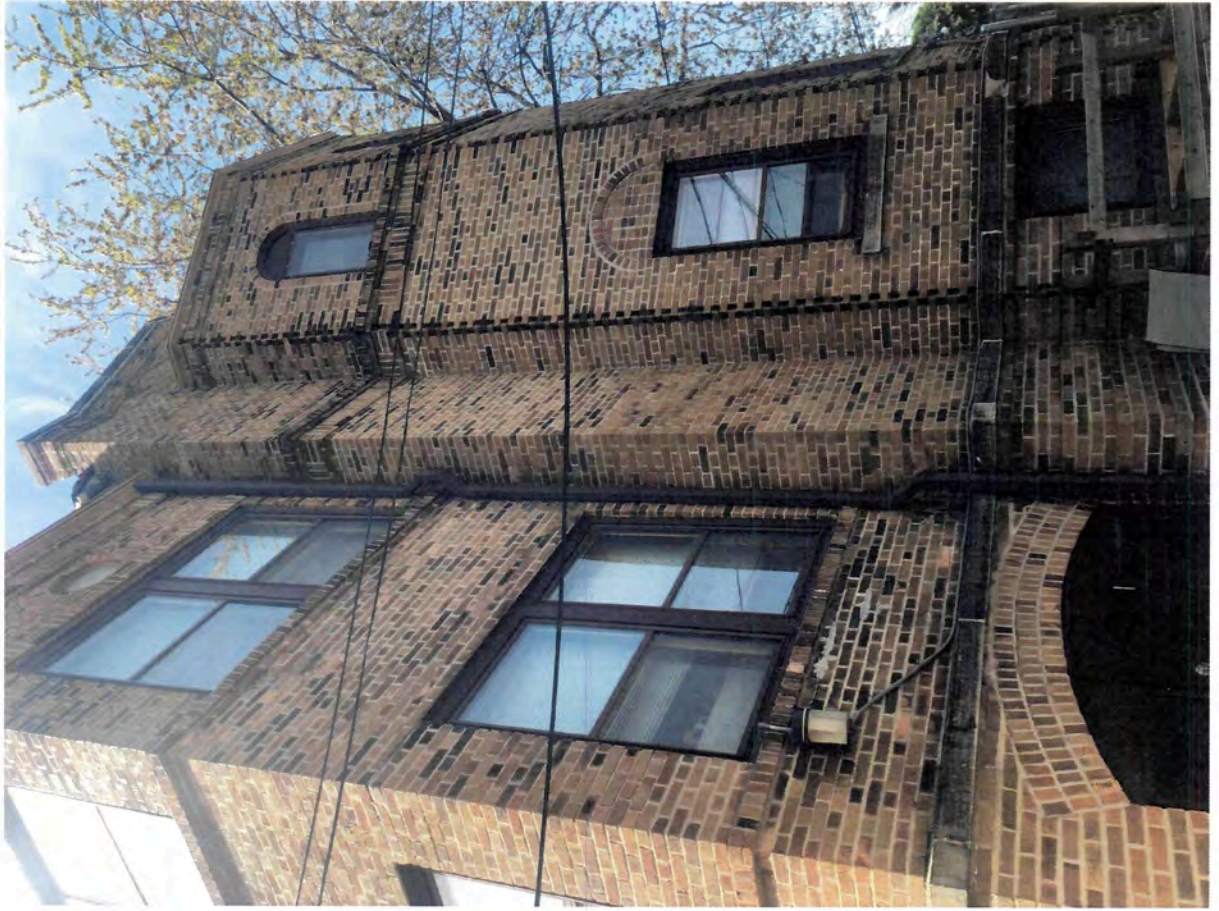
hpc@milwaukee.gov

www.milwaukee.gov/hpc

Or click the SUBMIT button to automatically email this form for submission.

SUBMIT

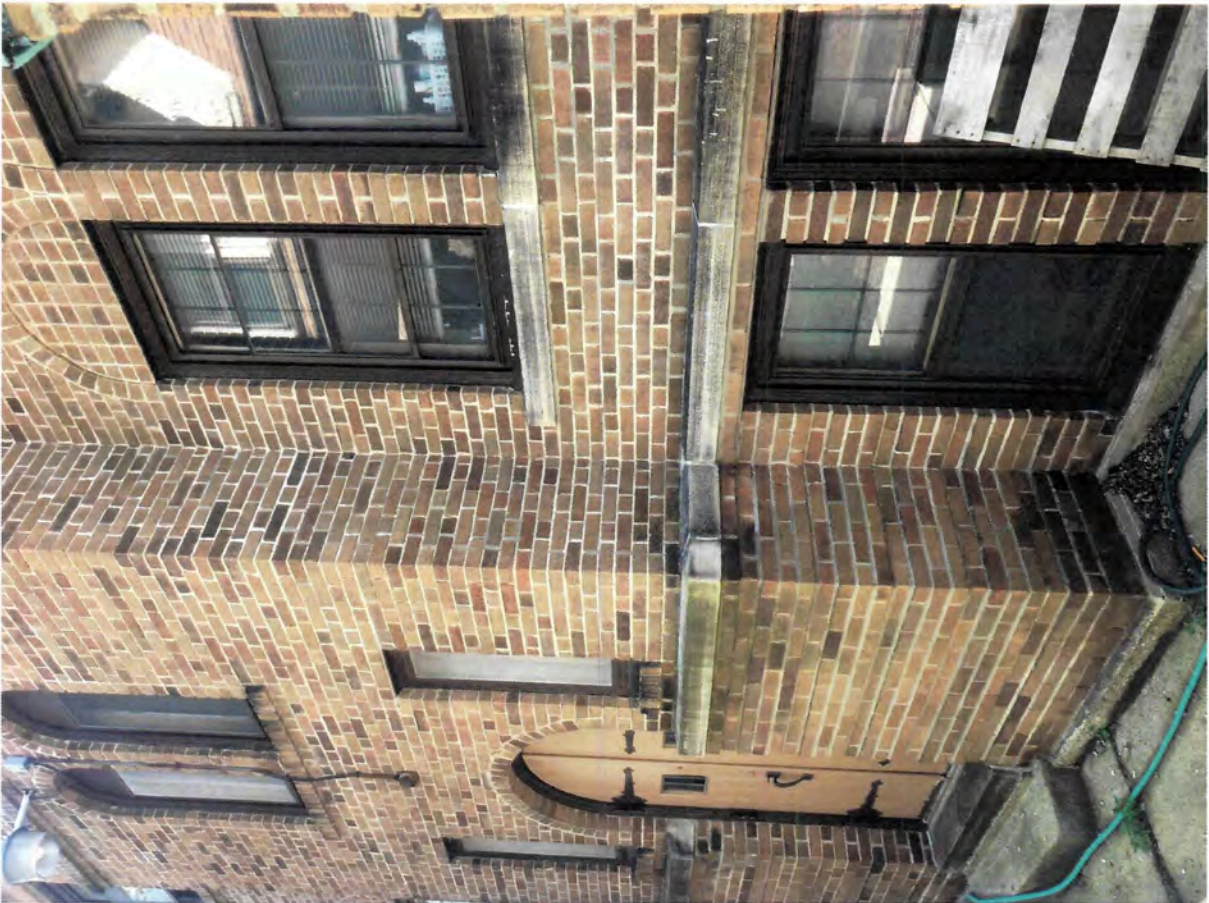
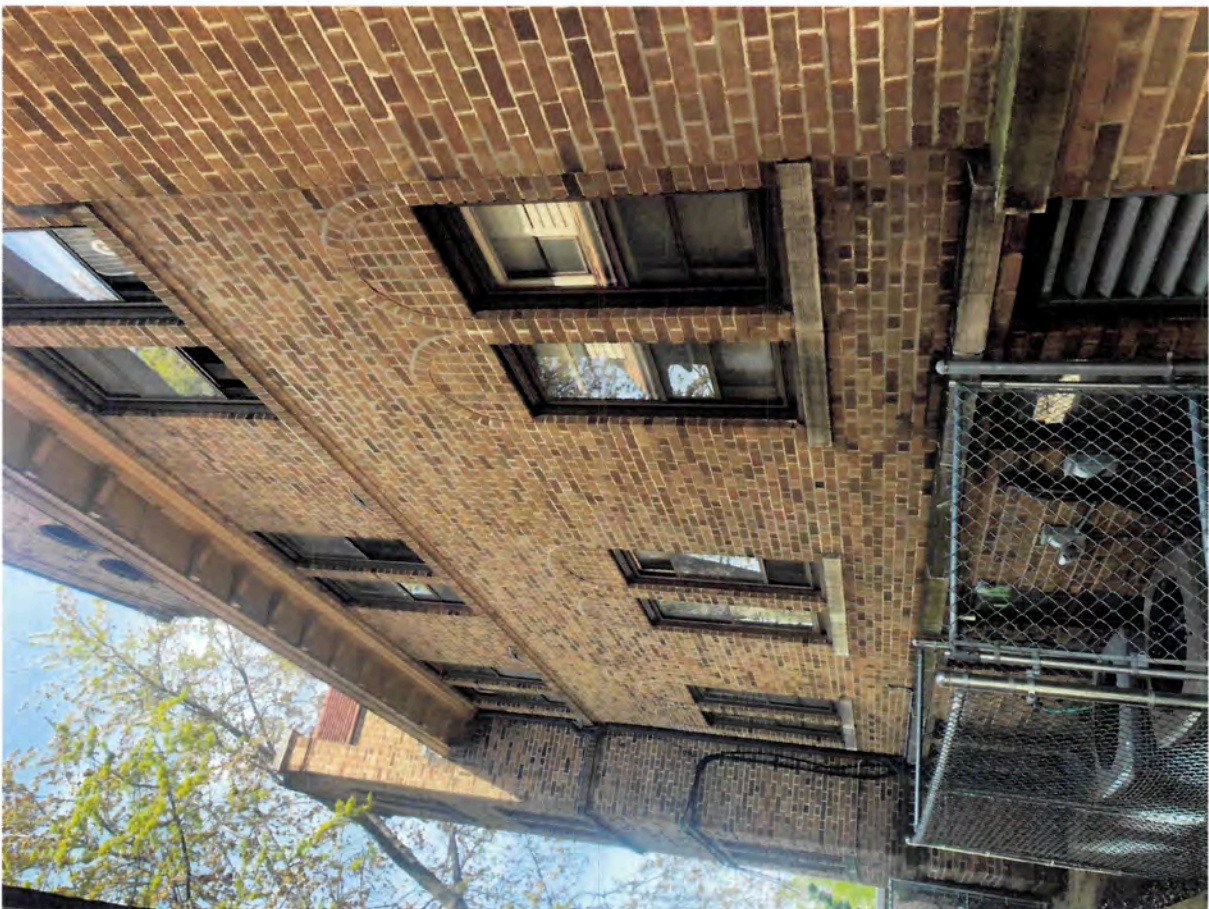
**RIVERWEST NORTH | 2626 N. BREMEN
EAST FACING**



**RIVERWEST NORTH | 2626 N. BREMEN
WEST FACING**



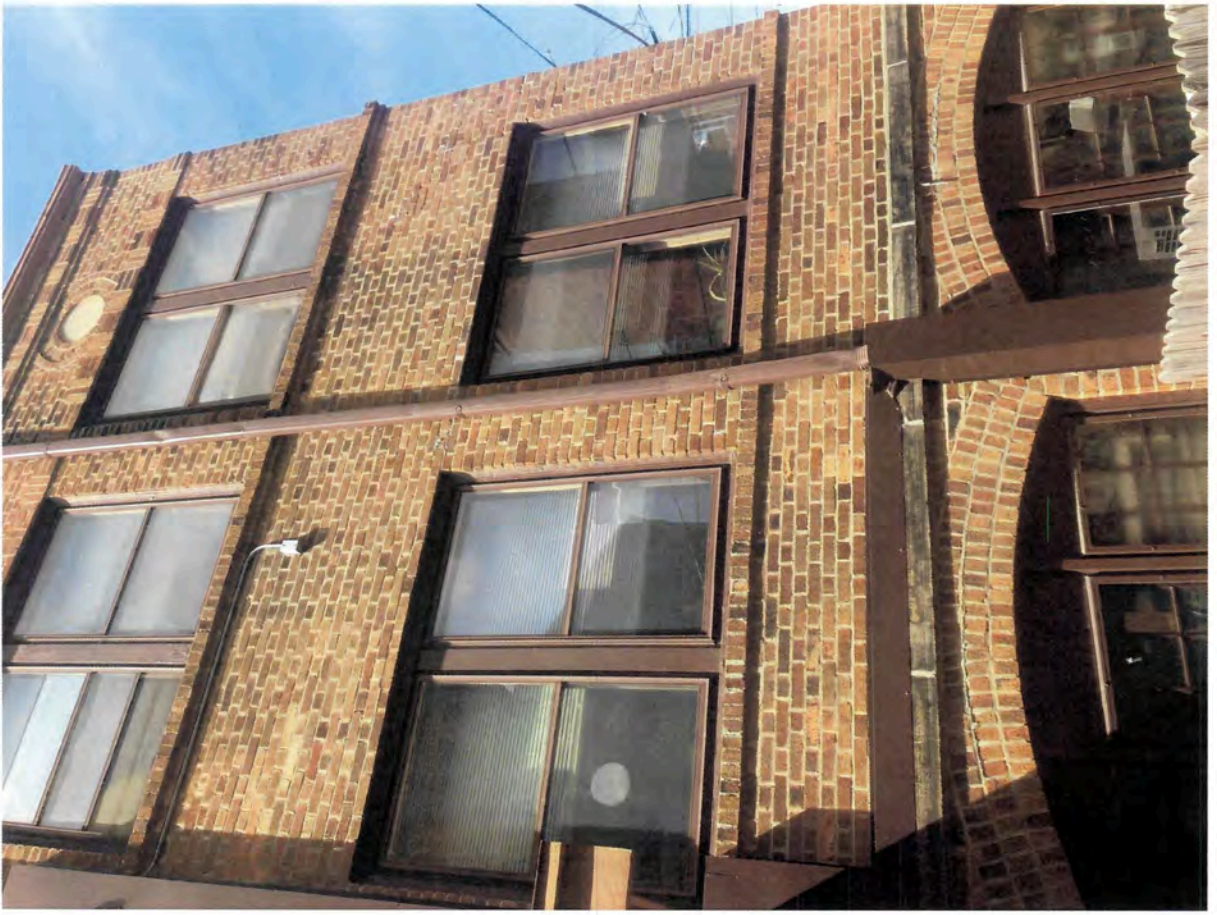
**RIVERWEST NORTH | 2626 N. BREMEN
NORTH FACING**



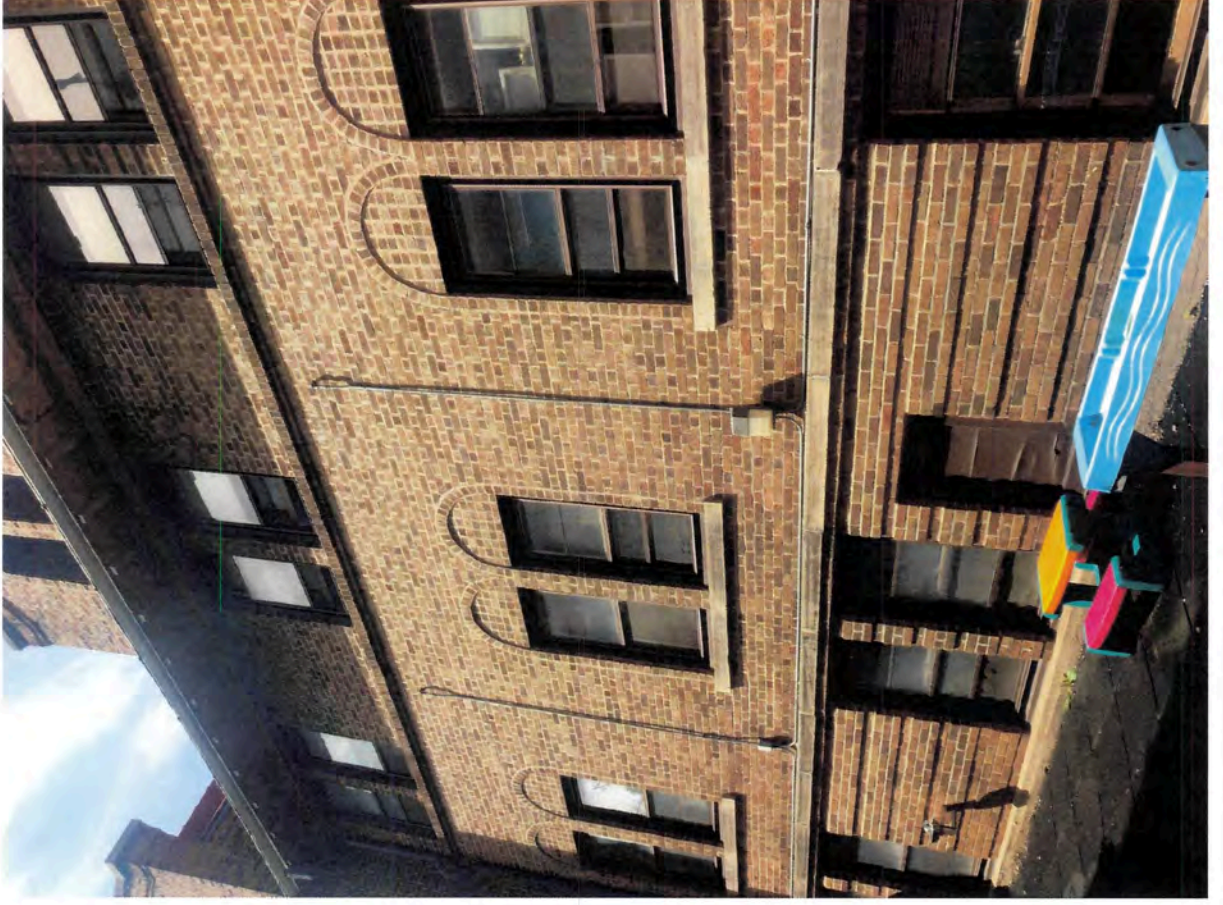
**RIVERWEST NORTH | 2626 N. BREMEN
NORTH FACING**



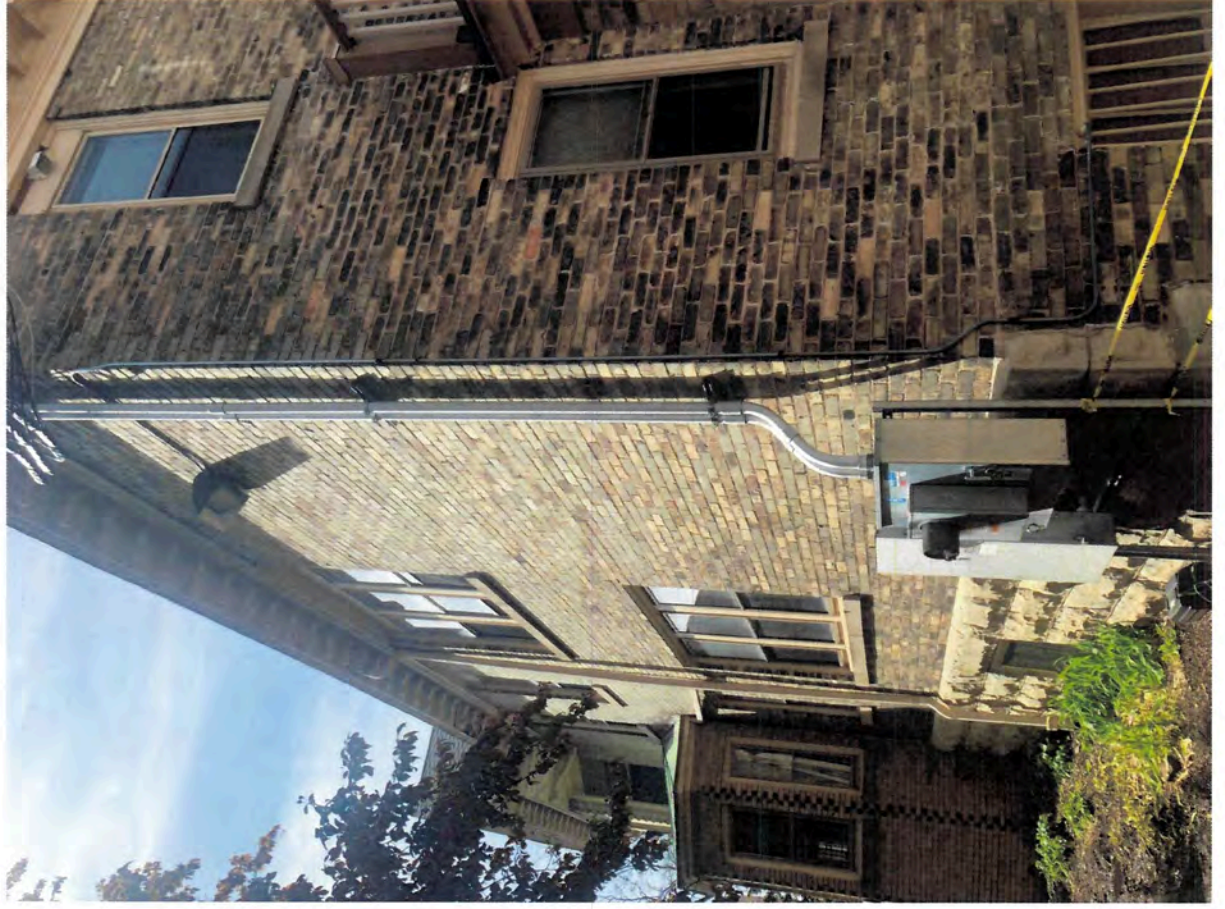
**RIVERWEST NORTH | 2626 N. BREMEN
SOUTH FACING**



**RIVERWEST NORTH | 2626 N. BREMEN
SOUTH FACING**



**RIVERWEST SOUTH I 2618 N. BREMEN
SOUTH FACING**



**RIVERWEST SOUTH | 2618 N. BREMEN
NORTH FACING**



**RIVERWEST SOUTH | 2618 N. BREMEN
EAST FACING**



**RIVERWEST SOUTH | 2618 N. BREMEN
WEST FACING**



Sales Person:

PRESERVATION

Dealer Acknowledgement

Quote Date
11/19/2018

Date Ordered
Quote Not Ordered

Dealer Name:

050530 ABBY WINDOWS

Bill To:
ABBY WINDOWS
525 N 94TH STREET
MILWAUKEE, WI 53226

Ship To:
SAME

User Initials: JLS

Quote Created By: asc161

Phone: (414) 507-6455 Fax:

Order Notes:

Delivery Notes:

Quote Name:

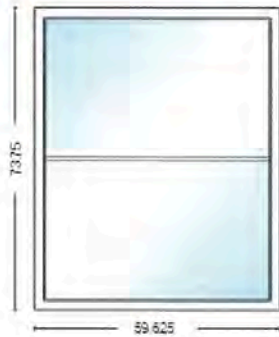
Project Name:

Meta House

Abby Windows 05053

QUOTE #	RUSH	STATUS	PO#	
2027514	No	None		
Line Item #	Qty	Width x Height	UI	Description

1-1 1 59.625" X 73.75" 134

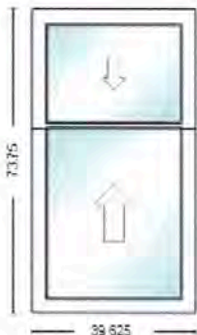


9014-Preservation Series 59.625 x 73.75
 Frame Color = Beige, Interior Finish = White Laminate
 EnergyMax 4, Double Strength
 U-Factor = 0.27, CR = 62, SHGC = 0.28, VT = 0.51, CPD =
 ASO-A-33-02846-00002
 Contour, Colonial, White Laminate / Beige, 1H
 Groove Filler = No Groove Filler, Frame Size
Line Item Notes: Single horizontal grid 28" from top of window

Comment / Room:

Parlor

Line Item #	Qty	Width x Height	UI	Description
2-1	1	39.625" X 73.75"	114	



9001-Preservation Series Double Hung 39.625 x 73.75
 Sash Split = Custom, Custom Sash Split From Top = 28,
 Custom Sash Split = 45.75
 Operation / Venting = Double Hung
 Frame Color = Beige, Interior Finish = White Laminate
 EnergyMax 7, Double Strength
 Lock / Keeper = Standard Lock / Keeper
 U-Factor = 0.21, CR = 69, SHGC = 0.24, VT = 0.4, CPD =
 ASO-A-73-02161-00001
 Groove Filler = No Groove Filler, Frame Size
Line Item Notes:

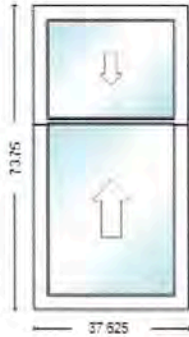
Comment / Room:

Parlor

QUOTE #	RUSH	STATUS	PO#
2027514	No	None	

Line Item #	Qty	Width x Height	UI	Description
-------------	-----	----------------	----	-------------

3-1 1 37.625" X 73.75" 112



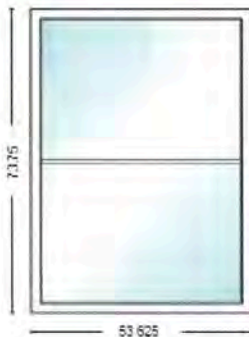
9001-Preservation Series Double Hung 37.625 x 73.75
 Sash Split = Custom, Custom Sash Split From Top = 28,
 Custom Sash Split = 45.75
 Operation / Venting = Double Hung
 Frame Color = Beige, Interior Finish = White Laminate
 EnergyMax 7, Double Strength
 Lock / Keeper = Standard Lock / Keeper
 U-Factor = 0.21, CR = 69, SHGC = 0.24, VT = 0.4, CPD =
 ASO-A-73-02161-00001
 Groove Filler = No Groove Filler, Frame Size
Line Item Notes:

Comment / Room:

Parlor

Line Item #	Qty	Width x Height	UI	Description
-------------	-----	----------------	----	-------------

4-1 1 53.625" X 73.75" 128



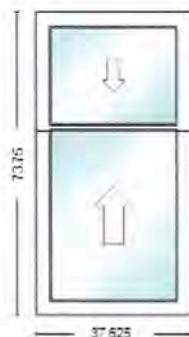
9014-Preservation Series 53.625 x 73.75
 Frame Color = Beige, Interior Finish = White Laminate
 EnergyMax 4, Double Strength
 U-Factor = 0.27, CR = 62, SHGC = 0.28, VT = 0.51, CPD =
 ASO-A-33-02846-00002
 Contour, Colonial, White Laminate / Beige, 1H
 Groove Filler = No Groove Filler, Frame Size
Line Item Notes: Single horizontal grid 28" from top of
 window

Comment / Room:

Parlor

Line Item #	Qty	Width x Height	UI	Description
-------------	-----	----------------	----	-------------

5-1 1 37.625" X 73.75" 112



9001-Preservation Series Double Hung 37.625 x 73.75
 Sash Split = Custom, Custom Sash Split From Top = 28,
 Custom Sash Split = 45.75
 Operation / Venting = Double Hung
 Frame Color = Beige, Interior Finish = White Laminate
 EnergyMax 7, Double Strength
 Lock / Keeper = Standard Lock / Keeper
 U-Factor = 0.21, CR = 69, SHGC = 0.24, VT = 0.4, CPD =
 ASO-A-73-02161-00001
 Groove Filler = No Groove Filler, Frame Size
Line Item Notes:

Comment / Room:

Parlor

QUOTE #	RUSH	STATUS	PO#
2027514	No	None	

Line Item #	Qty	Width x Height	UI	Description
6-1	1	17.625" X 62.25"	81	



9001-Preservation Series Double Hung 17.625 x 62.25
 Sash Split = Even
 Operation / Venting = Double Hung
 Frame Color = Beige, Interior Finish = Dark Oak Woodgrain
 EnergyMax 7, Double Strength
 Lock / Keeper = Standard Lock / Keeper
 U-Factor = 0.22, CR = 69, SHGC = 0.22, VT = 0.36, CPD = ASO-A-73-02162-00001
 Contour, Colonial, Dark Oak / Beige, 1V2H
 Groove Filler = No Groove Filler, Frame Size
Line Item Notes:

Comment / Room:

Office

Line Item #	Qty	Width x Height	UI	Description
7-1	1	29.625" X 62.25"	93	



9001-Preservation Series Double Hung 29.625 x 62.25
 Sash Split = Even
 Operation / Venting = Double Hung
 Frame Color = Beige, Interior Finish = Dark Oak Woodgrain
 EnergyMax 7, Double Strength
 Lock / Keeper = Standard Lock / Keeper
 U-Factor = 0.22, CR = 69, SHGC = 0.22, VT = 0.36, CPD = ASO-A-73-02162-00001
 Contour, Colonial, Dark Oak / Beige, 3V2H
 Groove Filler = No Groove Filler, Frame Size
Line Item Notes:

Comment / Room:

Office Rei

Line Item #	Qty	Width x Height	UI	Description
8-1	1	29.625" X 62.25"	93	



9001-Preservation Series Double Hung 29.625 x 62.25
 Sash Split = Even
 Operation / Venting = Double Hung
 Frame Color = Beige, Interior Finish = Dark Oak Woodgrain
 EnergyMax 7, Double Strength
 Lock / Keeper = Standard Lock / Keeper
 U-Factor = 0.22, CR = 69, SHGC = 0.22, VT = 0.36, CPD = ASO-A-73-02162-00001
 Contour, Colonial, Dark Oak / Beige, 3V2H
 Groove Filler = No Groove Filler, Frame Size
Line Item Notes:

Comment / Room:

Office Rei

QUOTE #	RUSH	STATUS	PO#
2027514	No	None	

Line Item #	Qty	Width x Height	UI	Description
-------------	-----	----------------	----	-------------

9-1 1 29.625" X 62.25" 93



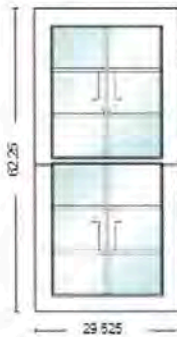
9001-Preservation Series Double Hung 29.625 x 62.25
 Sash Split = Even
 Operation / Venting = Double Hung
 Frame Color = Beige, Interior Finish = Dark Oak Woodgrain
 EnergyMax 7, Double Strength
 Lock / Keeper = Standard Lock / Keeper
 U-Factor = 0.22, CR = 69, SHGC = 0.22, VT = 0.36, CPD = ASO-A-73-02162-00001
 Contour, Colonial, Dark Oak / Beige, 3V2H
 Groove Filler = No Groove Filler, Frame Size
Line Item Notes:

Comment / Room:

Office Rei

Line Item #	Qty	Width x Height	UI	Description
-------------	-----	----------------	----	-------------

10-1 1 29.625" X 62.25" 93



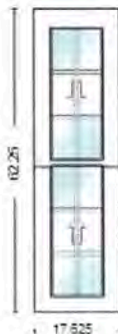
9001-Preservation Series Double Hung 29.625 x 62.25
 Sash Split = Even
 Operation / Venting = Double Hung
 Frame Color = Beige, Interior Finish = Dark Oak Woodgrain
 EnergyMax 7, Double Strength
 Lock / Keeper = Standard Lock / Keeper
 U-Factor = 0.22, CR = 69, SHGC = 0.22, VT = 0.36, CPD = ASO-A-73-02162-00001
 Contour, Colonial, Dark Oak / Beige, 1V2H
 Groove Filler = No Groove Filler, Frame Size
Line Item Notes:

Comment / Room:

Office Rei

Line Item #	Qty	Width x Height	UI	Description
-------------	-----	----------------	----	-------------

11-1 1 17.625" X 62.25" 81



9001-Preservation Series Double Hung 17.625 x 62.25
 Sash Split = Even
 Operation / Venting = Double Hung
 Frame Color = Beige, Interior Finish = Dark Oak Woodgrain
 EnergyMax 7, Double Strength
 Lock / Keeper = Standard Lock / Keeper
 U-Factor = 0.22, CR = 69, SHGC = 0.22, VT = 0.36, CPD = ASO-A-73-02162-00001
 Contour, Colonial, Dark Oak / Beige, 1V2H
 Groove Filler = No Groove Filler, Frame Size
Line Item Notes:

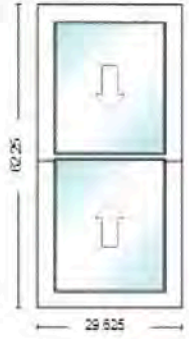
Comment / Room:

Office Rei

QUOTE #	RUSH	STATUS	PO#
2027514	No	None	

Line Item #	Qty	Width x Height	UI	Description
-------------	-----	----------------	----	-------------

12-1 1 29.625" X 62.25" 93



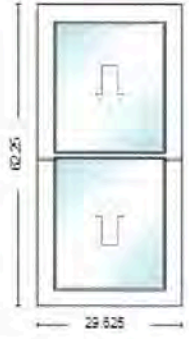
9001-Preservation Series Double Hung 29.625 x 62.25
 Sash Split = Even
 Operation / Venting = Double Hung
 Frame Color = Beige, Interior Finish = White Laminate
 EnergyMax 7, Double Strength
 Lock / Keeper = Standard Lock / Keeper
 U-Factor = 0.21, CR = 69, SHGC = 0.24, VT = 0.4, CPD = ASO-A-73-02161-00001
 Groove Filler = No Groove Filler, Frame Size
Line Item Notes:

Comment / Room:

Closet

Line Item #	Qty	Width x Height	UI	Description
-------------	-----	----------------	----	-------------

13-1 1 29.625" X 62.25" 93



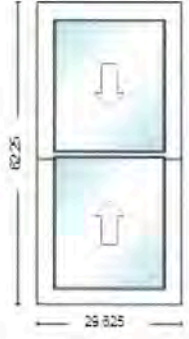
9001-Preservation Series Double Hung 29.625 x 62.25
 Sash Split = Even
 Operation / Venting = Double Hung
 Frame Color = Beige, Interior Finish = White Laminate
 EnergyMax 7, Double Strength
 Lock / Keeper = Standard Lock / Keeper
 U-Factor = 0.21, CR = 69, SHGC = 0.24, VT = 0.4, CPD = ASO-A-73-02161-00001
 Groove Filler = No Groove Filler, Frame Size
Line Item Notes:

Comment / Room:

Main Off

Line Item #	Qty	Width x Height	UI	Description
-------------	-----	----------------	----	-------------

14-1 1 29.625" X 62.25" 93



9001-Preservation Series Double Hung 29.625 x 62.25
 Sash Split = Even
 Operation / Venting = Double Hung
 Frame Color = Beige, Interior Finish = White Laminate
 EnergyMax 7, Double Strength
 Lock / Keeper = Standard Lock / Keeper
 U-Factor = 0.21, CR = 69, SHGC = 0.24, VT = 0.4, CPD = ASO-A-73-02161-00001
 Groove Filler = No Groove Filler, Frame Size
Line Item Notes:

Comment / Room:

Main Off

QUOTE #	RUSH	STATUS	PO#	
2027514	No	None		
Line Item #	Qty	Width x Height	UI	Description

15-1 1 29.625" X 62.25" 93



9001-Preservation Series Double Hung 29.625 x 62.25
 Sash Split = Even
 Operation / Venting = Double Hung
 Frame Color = Beige, Interior Finish = White Laminate
 EnergyMax 7, Double Strength
 Lock / Keeper = Standard Lock / Keeper
 U-Factor = 0.21, CR = 69, SHGC = 0.24, VT = 0.4, CPD = ASO-A-73-02161-00001
 Groove Filler = No Groove Filler, Frame Size
Line Item Notes:

Comment / Room:

Main Off

Line Item #	Qty	Width x Height	UI	Description
-------------	-----	----------------	----	-------------

16-1 1 27.625" X 58.25" 87



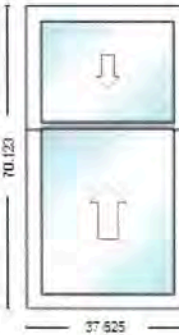
9001-Preservation Series Double Hung 27.625 x 58.25
 Sash Split = Even
 Operation / Venting = Double Hung
 Frame Color = Beige, Interior Finish = White Laminate
 EnergyMax 7, Double Strength, Tempered, OBSCURE FULL
 Lock / Keeper = Standard Lock / Keeper
 U-Factor = 0.21, CR = 69, SHGC = 0.24, VT = 0.4, CPD = ASO-A-73-02161-00001
 Groove Filler = No Groove Filler, Frame Size
Line Item Notes:

Comment / Room:

Bath

Line Item #	Qty	Width x Height	UI	Description
-------------	-----	----------------	----	-------------

17-1 1 37.625" X 70.123" 109



9001-Preservation Series Double Hung 37.625 x 70.123
 Sash Split = Custom, Custom Sash Split From Top = 28, Custom Sash Split = 42.125
 Operation / Venting = Double Hung
 Frame Color = Beige, Interior Finish = White Laminate
 EnergyMax 7, Double Strength
 Lock / Keeper = Standard Lock / Keeper
 U-Factor = 0.21, CR = 69, SHGC = 0.24, VT = 0.4, CPD = ASO-A-73-02161-00001
 Groove Filler = No Groove Filler, Frame Size
Line Item Notes:

Comment / Room:

Frig Rm

QUOTE #	RUSH	STATUS	PO#
2027514	No	None	
Line Item #	Qty	Width x Height	UI Description

18-1 1 31.625" X 70.123" 103



9001-Preservation Series Double Hung 31.625 x 70.123
 Sash Split = Custom, Custom Sash Split From Top = 28,
 Custom Sash Split = 42.125
 Operation / Venting = Double Hung
 Frame Color = Beige, Interior Finish = White Laminate
 EnergyMax 7, Double Strength
 Lock / Keeper = Standard Lock / Keeper
 U-Factor = 0.21, CR = 69, SHGC = 0.24, VT = 0.4, CPD =
 ASO-A-73-02161-00001
 Groove Filler = No Groove Filler, Frame Size
Line Item Notes:

Comment / Room:

Frig Rm

Line Item #	Qty	Width x Height	UI Description
-------------	-----	----------------	----------------

19-1 1 31.625" X 70.123" 103



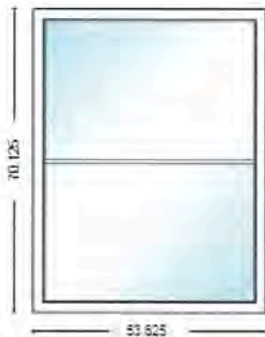
9001-Preservation Series Double Hung 31.625 x 70.123
 Sash Split = Custom, Custom Sash Split From Top = 28,
 Custom Sash Split = 42.125
 Operation / Venting = Double Hung
 Frame Color = Beige, Interior Finish = White Laminate
 EnergyMax 7, Double Strength
 Lock / Keeper = Standard Lock / Keeper
 U-Factor = 0.21, CR = 69, SHGC = 0.24, VT = 0.4, CPD =
 ASO-A-73-02161-00001
 Groove Filler = No Groove Filler, Frame Size
Line Item Notes:

Comment / Room:

Frig Rm

Line Item #	Qty	Width x Height	UI Description
-------------	-----	----------------	----------------

20-1 1 53.625" X 70.125" 125



9014-Preservation Series 53.625 x 70.125
 Frame Color = Beige, Interior Finish = Dark Oak Woodgrain
 EnergyMax 4, Double Strength
 U-Factor = 0.27, CR = 62, SHGC = 0.28, VT = 0.51, CPD =
 ASO-A-33-02846-00002
 Contour, Colonial, Dark Oak / Beige, 1H
 Groove Filler = No Groove Filler, Frame Size
Line Item Notes: Single horizontal grid 28" from top of
 window

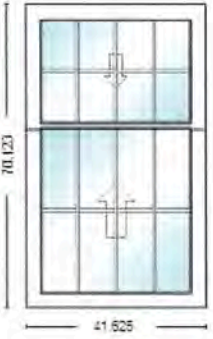
Comment / Room:

DR

QUOTE #	RUSH	STATUS	PO#
2027514	No	None	

Line Item #	Qty	Width x Height	UI	Description
-------------	-----	----------------	----	-------------

21-1 1 41.625" X 70.123" 113



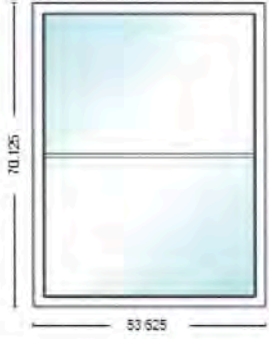
9001-Preservation Series Double Hung 41.625 x 70.123
 Sash Split = Custom, Custom Sash Split From Top = 28,
 Custom Sash Split = 42.125
 Operation / Venting = Double Hung
 Frame Color = Beige, Interior Finish = Dark Oak Woodgrain
 EnergyMax 7, Double Strength
 Lock / Keeper = Standard Lock / Keeper
 U-Factor = 0.22, CR = 69, SHGC = 0.22, VT = 0.36, CPD =
 ASO-A-73-02162-00001
 Contour, Colonial, Dark Oak / Beige, 3V1H
 Groove Filler = No Groove Filler, Frame Size
Line Item Notes:

Comment / Room:

DR

Line Item #	Qty	Width x Height	UI	Description
-------------	-----	----------------	----	-------------

22-1 1 53.625" X 70.125" 125



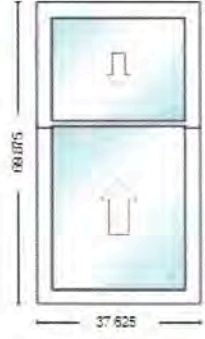
9014-Preservation Series 53.625 x 70.125
 Frame Color = Beige, Interior Finish = Dark Oak Woodgrain
 EnergyMax 4, Double Strength
 U-Factor = 0.27, CR = 62, SHGC = 0.28, VT = 0.51, CPD =
 ASO-A-33-02846-00002
 Contour, Colonial, Dark Oak / Beige, 1H
 Groove Filler = No Groove Filler, Frame Size
Line Item Notes: Single horizontal grid 28" from top of
 window

Comment / Room:

DR

Line Item #	Qty	Width x Height	UI	Description
-------------	-----	----------------	----	-------------

23-1 1 37.625" X 69.875" 108



9001-Preservation Series Double Hung 37.625 x 69.875
 Sash Split = Custom, Custom Sash Split From Top = 28,
 Custom Sash Split = 41.875
 Operation / Venting = Double Hung
 Frame Color = Beige, Interior Finish = White Laminate
 EnergyMax 7, Double Strength
 Lock / Keeper = Standard Lock / Keeper
 U-Factor = 0.21, CR = 69, SHGC = 0.24, VT = 0.4, CPD =
 ASO-A-73-02161-00001
 Groove Filler = No Groove Filler, Frame Size
Line Item Notes:

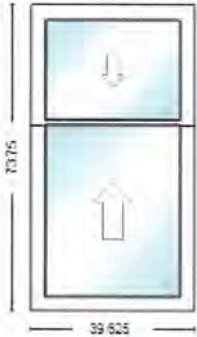
Comment / Room:

Off Carlis

QUOTE #	RUSH	STATUS	PO#
2027514	No	None	

Line Item #	Qty	Width x Height	UI	Description
-------------	-----	----------------	----	-------------

24-1 1 39.625" X 73.75" 114



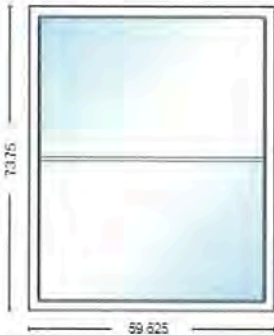
9001-Preservation Series Double Hung 39.625 x 73.75
 Sash Split = Custom, Custom Sash Split From Top = 28,
 Custom Sash Split = 45.75
 Operation / Venting = Double Hung
 Frame Color = Beige, Interior Finish = White Laminate
 EnergyMax 7, Double Strength
 Lock / Keeper = Standard Lock / Keeper
 U-Factor = 0.21, CR = 69, SHGC = 0.24, VT = 0.4, CPD =
 ASO-A-73-02161-00001
 Groove Filler = No Groove Filler, Frame Size
Line Item Notes:

Comment / Room:

Off Carlis

Line Item #	Qty	Width x Height	UI	Description
-------------	-----	----------------	----	-------------

25-1 1 59.625" X 73.75" 134



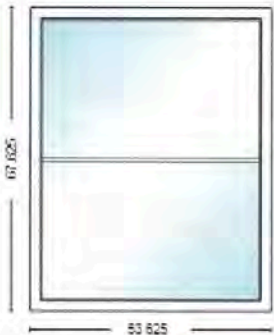
9014-Preservation Series 59.625 x 73.75
 Frame Color = Beige, Interior Finish = White Laminate
 EnergyMax 4, Double Strength
 U-Factor = 0.27, CR = 62, SHGC = 0.28, VT = 0.51, CPD =
 ASO-A-33-02846-00002
 Contour, Colonial, White Laminate / Beige, 1H
 Groove Filler = No Groove Filler, Frame Size
Line Item Notes: Single horizontal grid 28" from top of window

Comment / Room:

Off Carlis

Line Item #	Qty	Width x Height	UI	Description
-------------	-----	----------------	----	-------------

26-1 1 53.625" X 67.625" 122



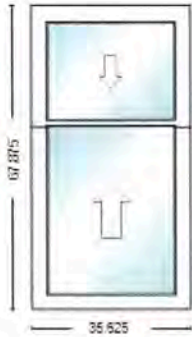
9014-Preservation Series 53.625 x 67.625
 Frame Color = Beige, Interior Finish = White Laminate
 EnergyMax 4, Double Strength
 U-Factor = 0.27, CR = 63, SHGC = 0.29, VT = 0.52, CPD =
 ASO-A-33-02836-00002
 Contour, Colonial, White Laminate / Beige, 1H
 Groove Filler = No Groove Filler, Frame Size
Line Item Notes: Single horizontal grid 26" from top of window

Comment / Room:

BR1

QUOTE #	RUSH	STATUS	PO#
2027514	No	None	
Line Item #	Qty	Width x Height	UI Description

27-1 1 35.625" X 67.875" 104

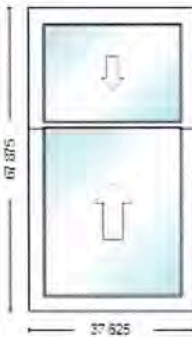


9001-Preservation Series Double Hung 35.625 x 67.875
 Sash Split = Custom, Custom Sash Split From Top = 26,
 Custom Sash Split = 41.875
 Operation / Venting = Double Hung
 Frame Color = Beige, Interior Finish = White Laminate
 EnergyMax 7, Double Strength
 Lock / Keeper = Standard Lock / Keeper
 U-Factor = 0.21, CR = 69, SHGC = 0.24, VT = 0.4, CPD =
 ASO-A-73-02161-00001
 Groove Filler = No Groove Filler, Frame Size
Line Item Notes:

Comment / Room:

BR1

Line Item #	Qty	Width x Height	UI Description
28-1	1	37.625" X 67.875"	106

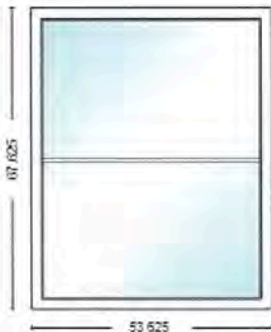


9001-Preservation Series Double Hung 37.625 x 67.875
 Sash Split = Custom, Custom Sash Split From Top = 26,
 Custom Sash Split = 41.875
 Operation / Venting = Double Hung
 Frame Color = Beige, Interior Finish = White Laminate
 EnergyMax 7, Double Strength
 Lock / Keeper = Standard Lock / Keeper
 U-Factor = 0.21, CR = 69, SHGC = 0.24, VT = 0.4, CPD =
 ASO-A-73-02161-00001
 Groove Filler = No Groove Filler, Frame Size
Line Item Notes:

Comment / Room:

BR2

Line Item #	Qty	Width x Height	UI Description
29-1	1	53.625" X 67.625"	122



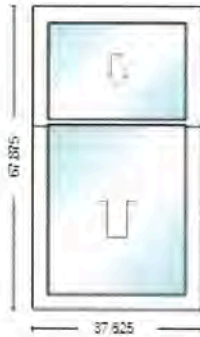
9014-Preservation Series 53.625 x 67.625
 Frame Color = Beige, Interior Finish = White Laminate
 EnergyMax 4, Double Strength
 U-Factor = 0.27, CR = 63, SHGC = 0.29, VT = 0.52, CPD =
 ASO-A-33-02836-00002
 Contour, Colonial, White Laminate / Beige, 1H
 Groove Filler = No Groove Filler, Frame Size
Line Item Notes: Single horizontal grid 26" from top of
 window

Comment / Room:

BR2

QUOTE #	RUSH	STATUS	PO#
2027514	No	None	

Line Item #	Qty	Width x Height	UI	Description
30-1	1	37.625" X 67.875"	106	

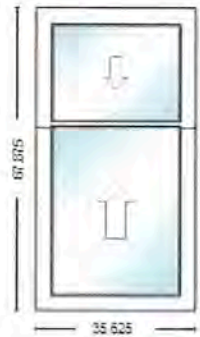


9001-Preservation Series Double Hung 37.625 x 67.875
 Sash Split = Custom, Custom Sash Split From Top = 26,
 Custom Sash Split = 41.875
 Operation / Venting = Double Hung
 Frame Color = Beige, Interior Finish = White Laminate
 EnergyMax 7, Double Strength
 Lock / Keeper = Standard Lock / Keeper
 U-Factor = 0.21, CR = 69, SHGC = 0.24, VT = 0.4, CPD =
 ASO-A-73-02161-00001
 Groove Filler = No Groove Filler, Frame Size
Line Item Notes:

Comment / Room:

BR2

Line Item #	Qty	Width x Height	UI	Description
31-1	1	35.625" X 67.875"	104	

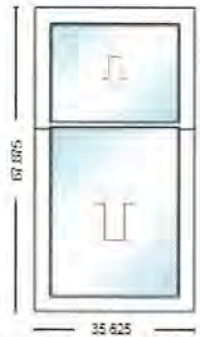


9001-Preservation Series Double Hung 35.625 x 67.875
 Sash Split = Custom, Custom Sash Split From Top = 26,
 Custom Sash Split = 41.875
 Operation / Venting = Double Hung
 Frame Color = Beige, Interior Finish = White Laminate
 EnergyMax 7, Double Strength
 Lock / Keeper = Standard Lock / Keeper
 U-Factor = 0.21, CR = 69, SHGC = 0.24, VT = 0.4, CPD =
 ASO-A-73-02161-00001
 Groove Filler = No Groove Filler, Frame Size
Line Item Notes:

Comment / Room:

BR3

Line Item #	Qty	Width x Height	UI	Description
32-1	1	35.625" X 67.875"	104	



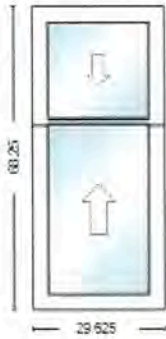
9001-Preservation Series Double Hung 35.625 x 67.875
 Sash Split = Custom, Custom Sash Split From Top = 26,
 Custom Sash Split = 41.875
 Operation / Venting = Double Hung
 Frame Color = Beige, Interior Finish = White Laminate
 EnergyMax 7, Double Strength
 Lock / Keeper = Standard Lock / Keeper
 U-Factor = 0.21, CR = 69, SHGC = 0.24, VT = 0.4, CPD =
 ASO-A-73-02161-00001
 Groove Filler = No Groove Filler, Frame Size
Line Item Notes:

Comment / Room:

BR3

QUOTE #	RUSH	STATUS	PO#	
2027514	No	None		
Line Item #	Qty	Width x Height	UI	Description

33-1 1 29.625" X 68.25" 99



9001-Preservation Series Double Hung 29.625 x 68.25
 Sash Split = Custom, Custom Sash Split From Top = 26,
 Custom Sash Split = 42.25
 Operation / Venting = Double Hung
 Frame Color = Beige, Interior Finish = White Laminate
 EnergyMax 7, Double Strength
 Lock / Keeper = Standard Lock / Keeper
 U-Factor = 0.21, CR = 69, SHGC = 0.24, VT = 0.4, CPD =
 ASO-A-73-02161-00001
 Groove Filler = No Groove Filler, Frame Size
Line Item Notes:

Comment / Room:

BR4

Line Item #	Qty	Width x Height	UI	Description
-------------	-----	----------------	----	-------------

34-1 1 29.625" X 68.25" 99



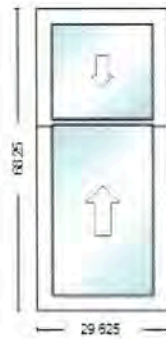
9001-Preservation Series Double Hung 29.625 x 68.25
 Sash Split = Custom, Custom Sash Split From Top = 26,
 Custom Sash Split = 42.25
 Operation / Venting = Double Hung
 Frame Color = Beige, Interior Finish = White Laminate
 EnergyMax 7, Double Strength
 Lock / Keeper = Standard Lock / Keeper
 U-Factor = 0.21, CR = 69, SHGC = 0.24, VT = 0.4, CPD =
 ASO-A-73-02161-00001
 Groove Filler = No Groove Filler, Frame Size
Line Item Notes:

Comment / Room:

BR4

Line Item #	Qty	Width x Height	UI	Description
-------------	-----	----------------	----	-------------

35-1 1 29.625" X 68.25" 99



9001-Preservation Series Double Hung 29.625 x 68.25
 Sash Split = Custom, Custom Sash Split From Top = 26,
 Custom Sash Split = 42.25
 Operation / Venting = Double Hung
 Frame Color = Beige, Interior Finish = White Laminate
 EnergyMax 7, Double Strength
 Lock / Keeper = Standard Lock / Keeper
 U-Factor = 0.21, CR = 69, SHGC = 0.24, VT = 0.4, CPD =
 ASO-A-73-02161-00001
 Groove Filler = No Groove Filler, Frame Size
Line Item Notes:

Comment / Room:

BR4

QUOTE #	RUSH	STATUS	PO#
2027514	No	None	

Line Item #	Qty	Width x Height	UI	Description
-------------	-----	----------------	----	-------------

36-1 1 27.625" X 58.125" 87



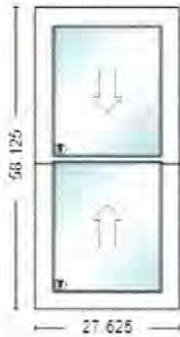
9001-Preservation Series Double Hung 27.625 x 58.125
 Sash Split = Even
 Operation / Venting = Double Hung
 Frame Color = Beige, Interior Finish = White Laminate
 EnergyMax 7, Double Strength, Tempered, OBSCURE FULL
 Lock / Keeper = Standard Lock / Keeper
 U-Factor = 0.21, CR = 69, SHGC = 0.24, VT = 0.4, CPD =
 ASO-A-73-02161-00001
 Groove Filler = No Groove Filler, Frame Size
Line Item Notes:

Comment / Room:

Bath

Line Item #	Qty	Width x Height	UI	Description
-------------	-----	----------------	----	-------------

37-1 1 27.625" X 58.125" 87



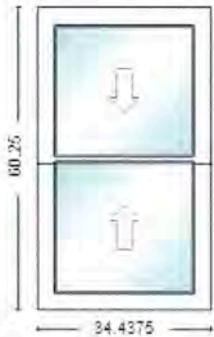
9001-Preservation Series Double Hung 27.625 x 58.125
 Sash Split = Even
 Operation / Venting = Double Hung
 Frame Color = Beige, Interior Finish = White Laminate
 EnergyMax 7, Double Strength, Tempered
 Lock / Keeper = Standard Lock / Keeper
 U-Factor = 0.21, CR = 69, SHGC = 0.24, VT = 0.4, CPD =
 ASO-A-73-02161-00001
 Groove Filler = No Groove Filler, Frame Size
Line Item Notes:

Comment / Room:

Stairs

Line Item #	Qty	Width x Height	UI	Description
-------------	-----	----------------	----	-------------

38-1 4 34.4375" X 60.25" 96



9001-Preservation Series Double Hung 34.4375 x 60.25
 Sash Split = Even
 Operation / Venting = Double Hung
 Frame Color = Beige, Interior Finish = White Laminate
 EnergyMax 7, Double Strength
 Lock / Keeper = Standard Lock / Keeper
 U-Factor = 0.21, CR = 69, SHGC = 0.24, VT = 0.4, CPD =
 ASO-A-73-02161-00001
 Groove Filler = No Groove Filler, Frame Size
Line Item Notes:

Comment / Room:

Off Lacey

QUOTE #	RUSH	STATUS	PO#
2027514	No	None	
Line Item #	Qty	Width x Height	UI Description

39-1 4 96

49000423
 UV10 MULLION BEIGE
 Length: 60.25 IN
Line Item Notes:

Comment / Room:

None Assigned

Line Item #	Qty	Width x Height	UI	Description
-------------	-----	----------------	----	-------------

40-1 4 96

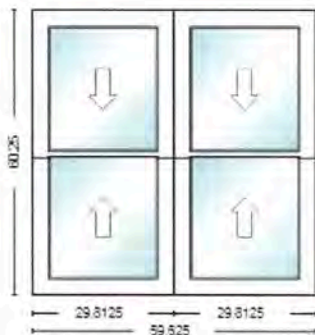
490004M3
 UV10 MULLION BEIGE/WHITE LAMINATE
 Length: 60.25 IN
Line Item Notes:

Comment / Room:

None Assigned

Line Item #	Qty	Width x Height	UI	Description
-------------	-----	----------------	----	-------------

41-1 1 59.625" X 60.25" 121



9001-Preservation Series Double Hung / Double Hung
 59.625 x 60.25
 Sash Split = Even
 Operation / Venting = Double Hung
 Frame Color = Beige, Interior Finish = White Laminate
 EnergyMax 7, Double Strength
 Lock / Keeper = Standard Lock / Keeper
 U-Factor = 0.21, CR = 69, SHGC = 0.24, VT = 0.4, CPD = ASO-A-73-02161-00001
 Groove Filler = No Groove Filler, Frame Size
 Vertical Factory 0" thick, 60.25" length
Line Item Notes:

Comment / Room:

Off Lacey

QUOTE #	RUSH	STATUS	PO#
2027514	No	None	

Line Item #	Qty	Width x Height	UI	Description
41-2	1	0" X 0"	0	

FACTORY MULLED
Vertical
Mull Length: 60.2

Line Item Notes:

Comment / Room:

None Assigned

Line Item #	Qty	Width x Height	UI	Description
41-3	1	0" X 0"	0	

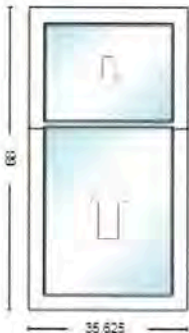
UV09 EXPDR
Sill Length: 5

Line Item Notes:

Comment / Room:

None Assigned

Line Item #	Qty	Width x Height	UI	Description
42-1	1	35.625" X 68"	104	



9001-Preservation Series Double Hung 35.625 x 68
Sash Split = Custom, Custom Sash Split From Top = 26,
Custom Sash Split = 42
Operation / Venting = Double Hung
Frame Color = Beige, Interior Finish = White Laminate
EnergyMax 7, Double Strength
Lock / Keeper = Standard Lock / Keeper
U-Factor = 0.21, CR = 69, SHGC = 0.24, VT = 0.4, CPD =
ASO-A-73-02161-00001
Groove Filler = No Groove Filler, Frame Size

Line Item Notes:

Comment / Room:

Off Eidler

QUOTE #	RUSH	STATUS	PO#
2027514	No	None	

Line Item #	Qty	Width x Height	UI	Description
-------------	-----	----------------	----	-------------

43-1 1 35.625" X 68" 104



9001-Preservation Series Double Hung 35.625 x 68
 Sash Split = Custom, Custom Sash Split From Top = 26,
 Custom Sash Split = 42
 Operation / Venting = Double Hung
 Frame Color = Beige, Interior Finish = White Laminate
 EnergyMax 7, Double Strength
 Lock / Keeper = Standard Lock / Keeper
 U-Factor = 0.21, CR = 69, SHGC = 0.24, VT = 0.4, CPD =
 ASO-A-73-02161-00001
 Groove Filler = No Groove Filler, Frame Size
Line Item Notes:

Comment / Room:

Off Clark

Line Item #	Qty	Width x Height	UI	Description
-------------	-----	----------------	----	-------------

44-1 1 37.625" X 68" 106



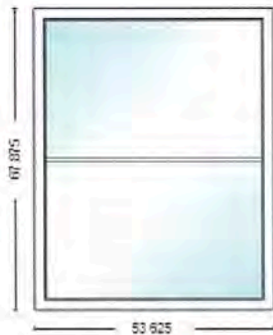
9001-Preservation Series Double Hung 37.625 x 68
 Sash Split = Custom, Custom Sash Split From Top = 26,
 Custom Sash Split = 42
 Operation / Venting = Double Hung
 Frame Color = Beige, Interior Finish = White Laminate
 EnergyMax 7, Double Strength
 Lock / Keeper = Standard Lock / Keeper
 U-Factor = 0.21, CR = 69, SHGC = 0.24, VT = 0.4, CPD =
 ASO-A-73-02161-00001
 Groove Filler = No Groove Filler, Frame Size
Line Item Notes:

Comment / Room:

BR5

Line Item #	Qty	Width x Height	UI	Description
-------------	-----	----------------	----	-------------

45-1 1 53.625" X 67.875" 122



9014-Preservation Series 53.625 x 67.875
 Frame Color = Beige, Interior Finish = White Laminate
 EnergyMax 4, Double Strength
 U-Factor = 0.27, CR = 63, SHGC = 0.29, VT = 0.52, CPD =
 ASO-A-33-02836-00002
 Contour, Colonial, White Laminate / Beige, 1H
 Groove Filler = No Groove Filler, Frame Size
Line Item Notes: Single horizontal grid 26" from top of
 window

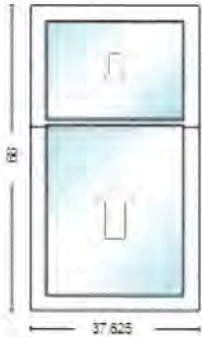
Comment / Room:

BR5

QUOTE #	RUSH	STATUS	PO#
2027514	No	None	

Line Item #	Qty	Width x Height	UI	Description
-------------	-----	----------------	----	-------------

46-1 1 37.625" X 68" 106



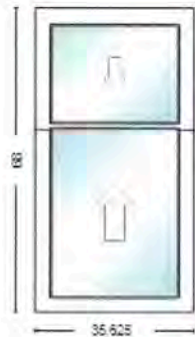
9001-Preservation Series Double Hung 37.625 x 68
 Sash Split = Custom, Custom Sash Split From Top = 26,
 Custom Sash Split = 42
 Operation / Venting = Double Hung
 Frame Color = Beige, Interior Finish = White Laminate
 EnergyMax 7, Double Strength
 Lock / Keeper = Standard Lock / Keeper
 U-Factor = 0.21, CR = 69, SHGC = 0.24, VT = 0.4, CPD =
 ASO-A-73-02161-00001
 Groove Filler = No Groove Filler, Frame Size
Line Item Notes:

Comment / Room:

BR5

Line Item #	Qty	Width x Height	UI	Description
-------------	-----	----------------	----	-------------

47-1 1 35.625" X 68" 104



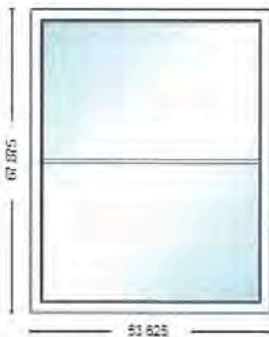
9001-Preservation Series Double Hung 35.625 x 68
 Sash Split = Custom, Custom Sash Split From Top = 26,
 Custom Sash Split = 42
 Operation / Venting = Double Hung
 Frame Color = Beige, Interior Finish = White Laminate
 EnergyMax 7, Double Strength
 Lock / Keeper = Standard Lock / Keeper
 U-Factor = 0.21, CR = 69, SHGC = 0.24, VT = 0.4, CPD =
 ASO-A-73-02161-00001
 Groove Filler = No Groove Filler, Frame Size
Line Item Notes:

Comment / Room:

BR6

Line Item #	Qty	Width x Height	UI	Description
-------------	-----	----------------	----	-------------

48-1 1 53.625" X 67.875" 122



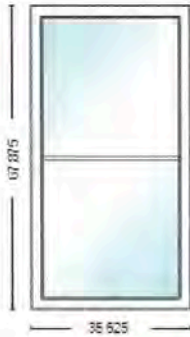
9014-Preservation Series 53.625 x 67.875
 Frame Color = Beige, Interior Finish = White Laminate
 EnergyMax 4, Double Strength
 U-Factor = 0.27, CR = 63, SHGC = 0.29, VT = 0.52, CPD =
 ASO-A-33-02836-00002
 Contour, Colonial, White Laminate / Beige, 1H
 Groove Filler = No Groove Filler, Frame Size
Line Item Notes: Single horizontal grid 26" from top of
 window

Comment / Room:

BR6

QUOTE #	RUSH	STATUS	PO#
2027514	No	None	
Line Item #	Qty	Width x Height	UI Description

49-1 1 35.625" X 67.875" 104



9014-Preservation Series 35.625 x 67.875
 Frame Color = Beige, Interior Finish = White Laminate
 EnergyMax 4, Double Strength
 U-Factor = 0.27, CR = 63, SHGC = 0.29, VT = 0.52, CPD = ASO-A-33-02836-00002
 Contour, Colonial, White Laminate / Beige, 1H
 Groove Filler = No Groove Filler, Frame Size
Line Item Notes: Single horizontal grid 26" from top of window

Comment / Room:

Closet

Customer Notes:


Total Unit Count	51
------------------	----

ATTENTION

Please note that all weights provided are estimates and subject to change based on actual order shipment.
 For Informational Purposes: All windows are viewed from the outside looking in.

NOTICE: The rating information provided on this quote is based upon the NFRC ratings at the time of quote. Such ratings are subject to changes in the standard by the applicable regulatory agencies and will be finalized at the time of manufacturing. All ratings printed on the NFRC label will supersede the NFRC rating set forth in the quote. Any changes made to an order after submission may also result in changes to the NFRC rating. Customer shall be solely responsible for determining whether the product ordered meets their jurisdiction's requirements.

In accordance with the state of California:

 **WARNING:** Cancer and Reproductive Harm - www.p65Warnings.ca.gov

This order is subject to AMI's Standard Terms and Conditions, which can be found here:
<http://www.associatedmaterials.com/Tools.html>

I have reviewed this order and certify that it is correct. I understand that this order is noncancellable, nonreturnable, and nonrefundable.

By _____ Authorized Representative