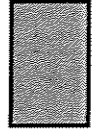
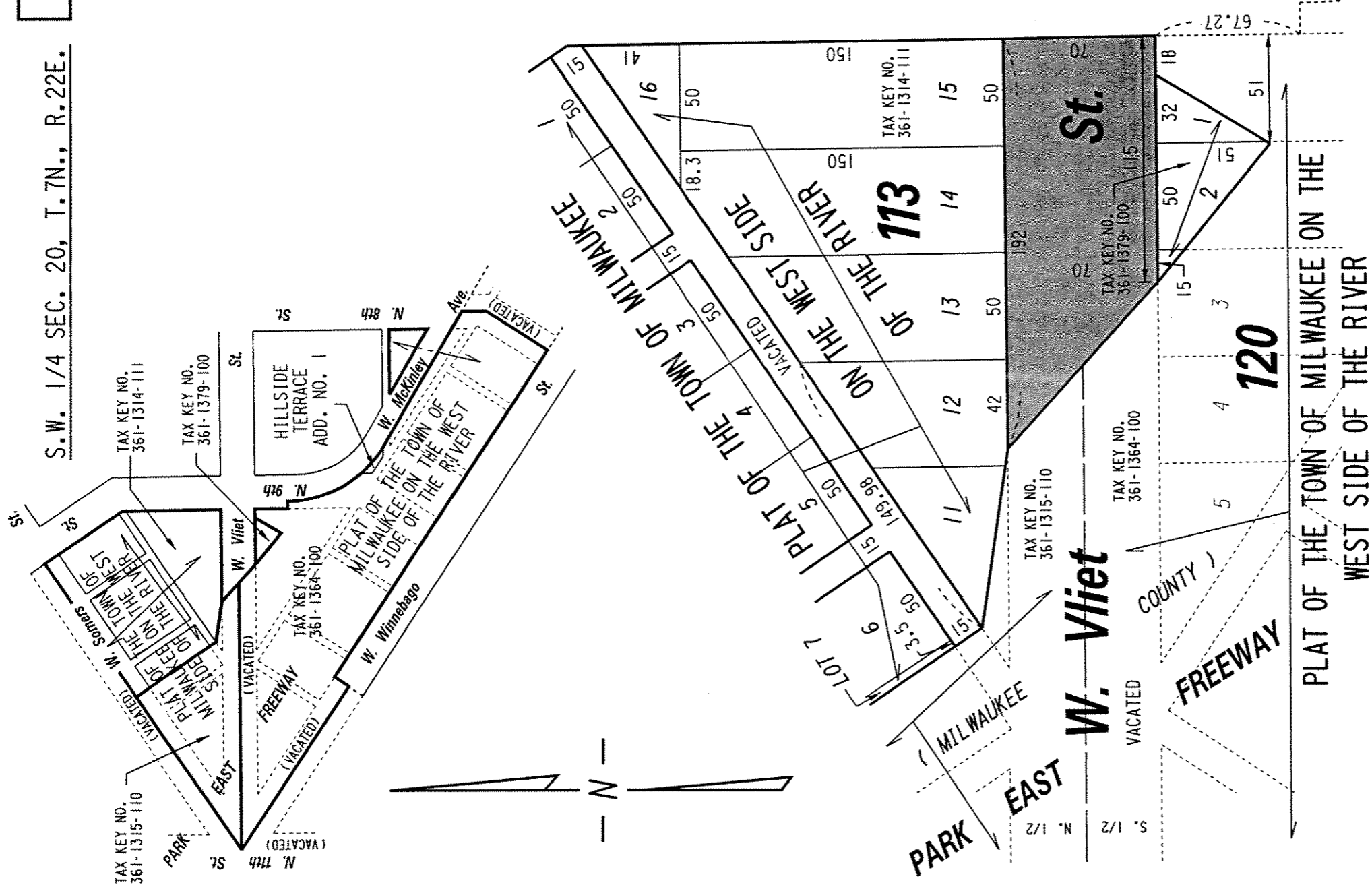


362

S.W. 1/4 SEC. 20, T.7N., R.22E.



PORTION OF PUBLIC STREET PROPOSED TO BE VACATED

EXHIBIT "A"
FILE NO. 030871

INFRASTRUCTURE SERVICES DIVISION
MILWAUKEE, WISCONSIN

ASSIGNED TO: W.E. FUCHS
DRAWN BY: W.E.F.
PROJECT/GRANT NO.: WK52337185
APPROVED BY:

CH'K'D. BY: M.C. WILLIAMS
DATE: OCT. 10, 2003
SCALE: 1" = 60'

Marcia Lindholm
CENTRAL DRAFTING & RECORDS MANAGER
CITY ENGINEER